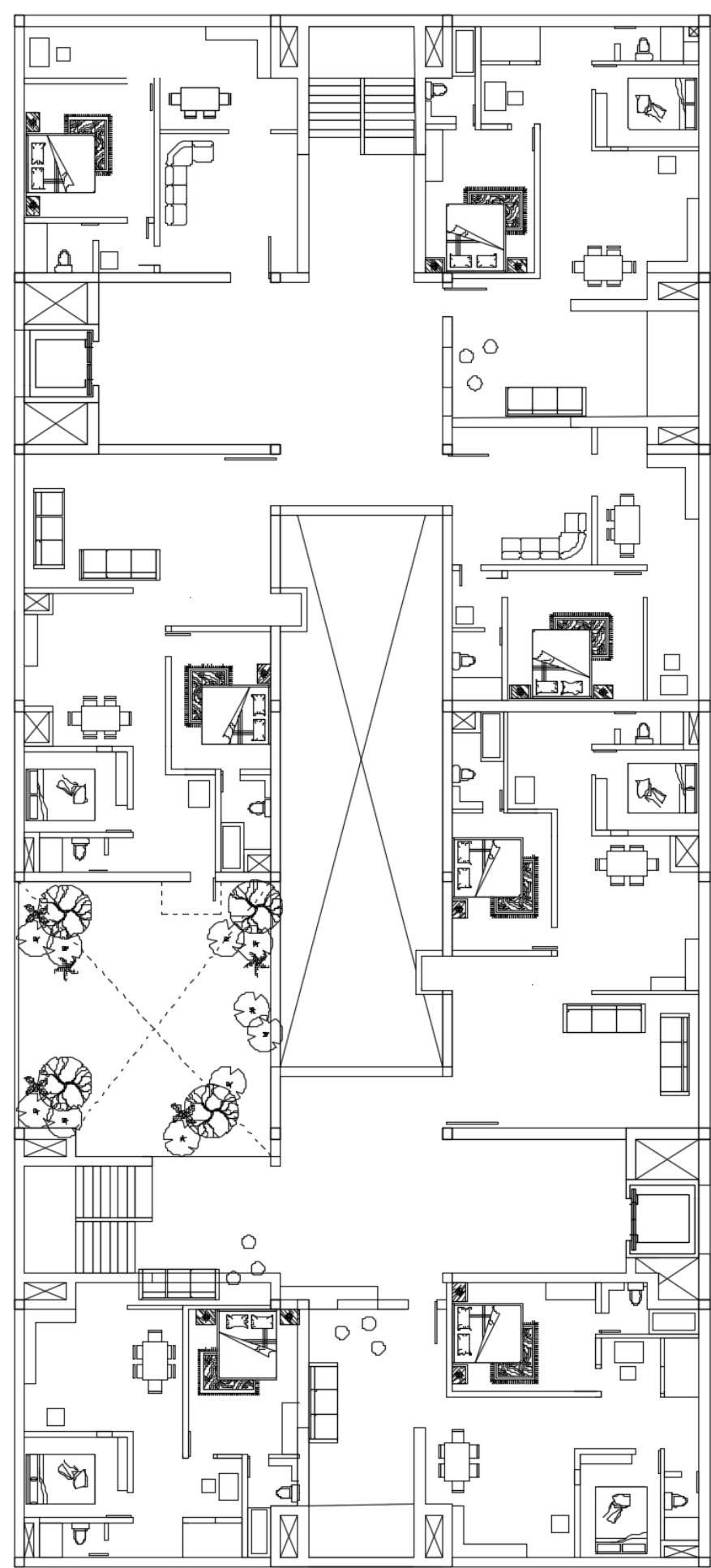


NO OF FLOORS : 12
TOTAL HEIGHT : 39M

TOTAL CARPET AREA	876.4	Sq.mt
TOTAL BUILT UP AREA	974.8	Sq.mt
TOTAL SUPER-BUILT UP ARE	X	Sq.mt
FSI (consumed/allowed)	2.7/2.7	

The whole block gets vertically devided into 3 different parts. First 5 floors are type 1 and Upper 6 floors are type 2. The vertical circulation pattern for both the floor gets connected at the 6th floor, which connects all the staircases and acts like a street. Though the staircases are vertically broken, the lift remains continuous throughout the floors.

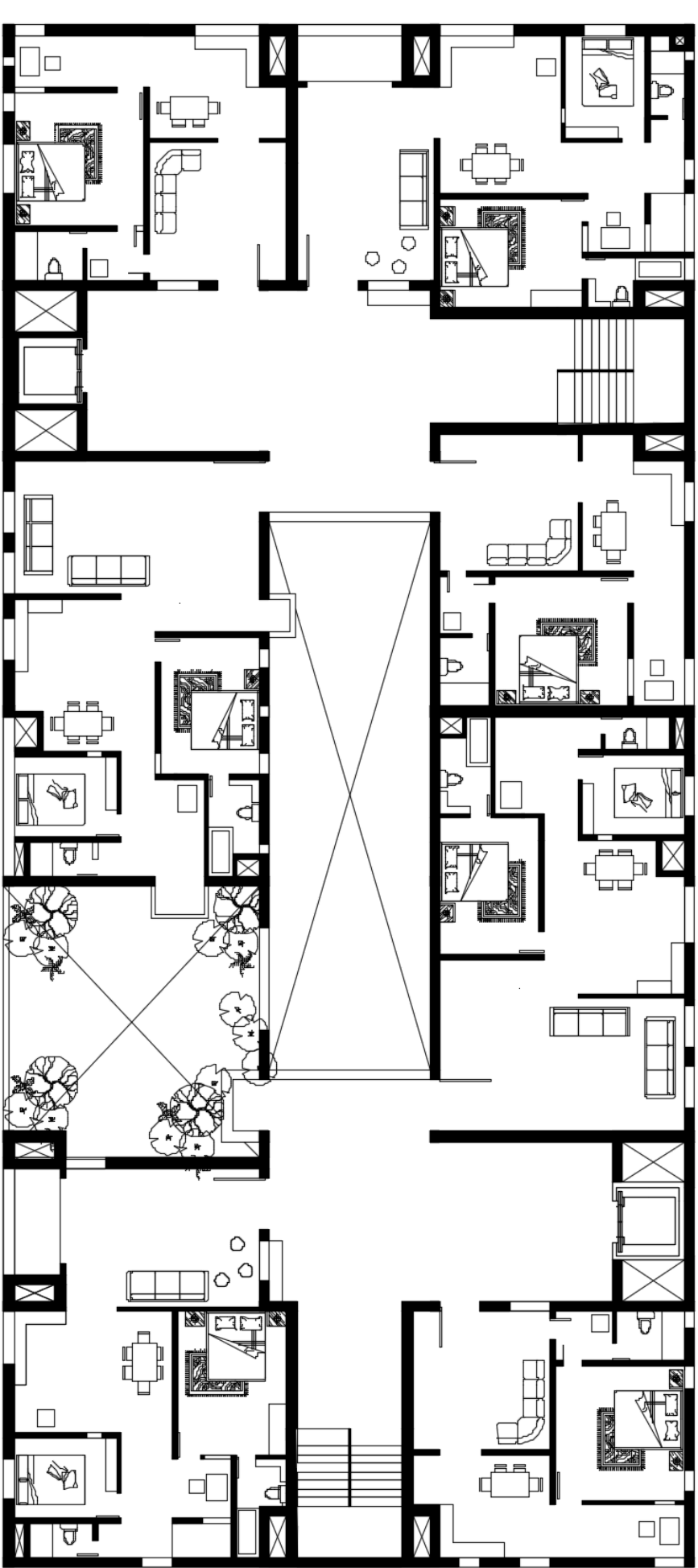


Floor Type 1
Typical floor type 1 has 4 2BHKs and 4 1BHKs

This type starts from the 1st floor and remains same till the 5th floor.

2 BHK calculations

TOTAL CARPET AREA	75	Sq.mt
TOTAL BUILT UP AREA	79.45	Sq.mt
SUPER-BUILT UP AREA	X	Sq.mt

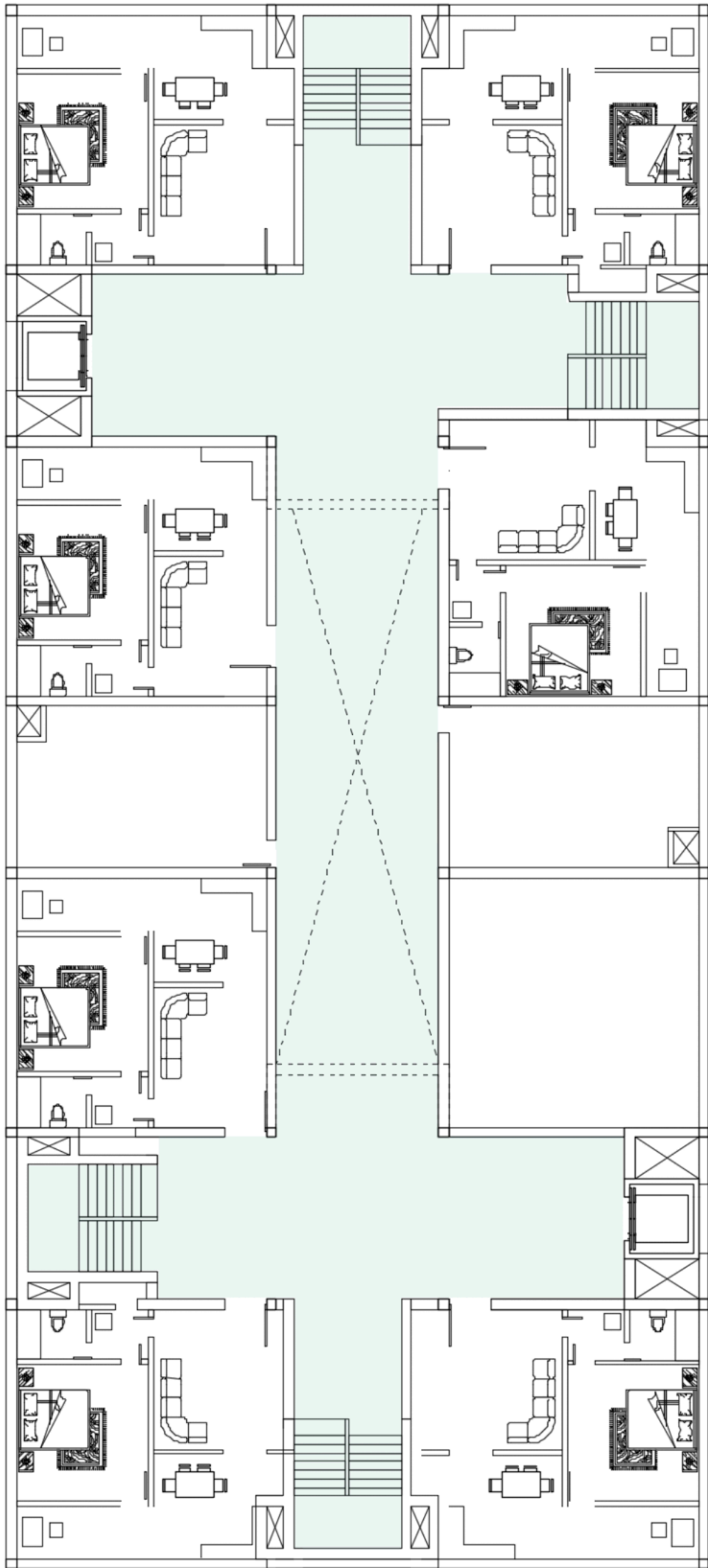


Floor Type 2
Typical floor type 2 has 4 2BHKs and 4 1BHKs

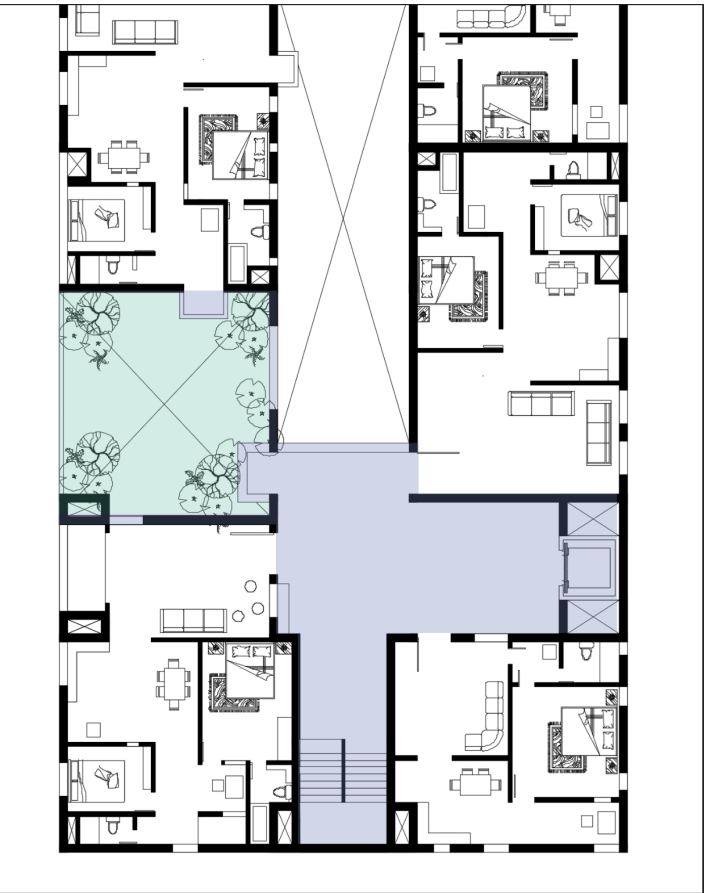
This type starts from the 7th floor and remains same till the 12th floor.

1 BHK calculations

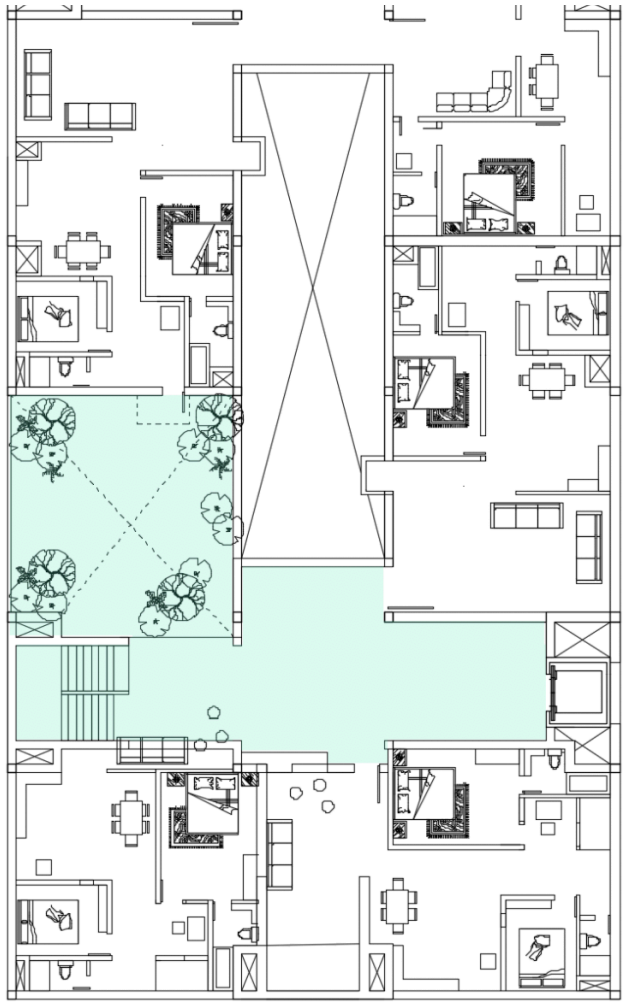
TOTAL CARPET AREA	43	Sq.mt
TOTAL BUILT UP AREA	49	Sq.mt
SUPER-BUILT UP AREA	X	Sq.mt



The third floor plan type showing the connections of all the staircases. The street plan.



Both the typical floor plans have 1 double volume space instead of a 1BHK. This space is overlooked and connected to different units around it.



This and the upper plan shows the double volume space relation in the floor type 1. It also acts as the Refuge area for fire safety.

