

Site level

Total floors= G+8

Super built up area = 17,439.6 sq.m.

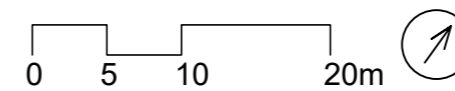
Built up area = 14,555.2 sq.m.

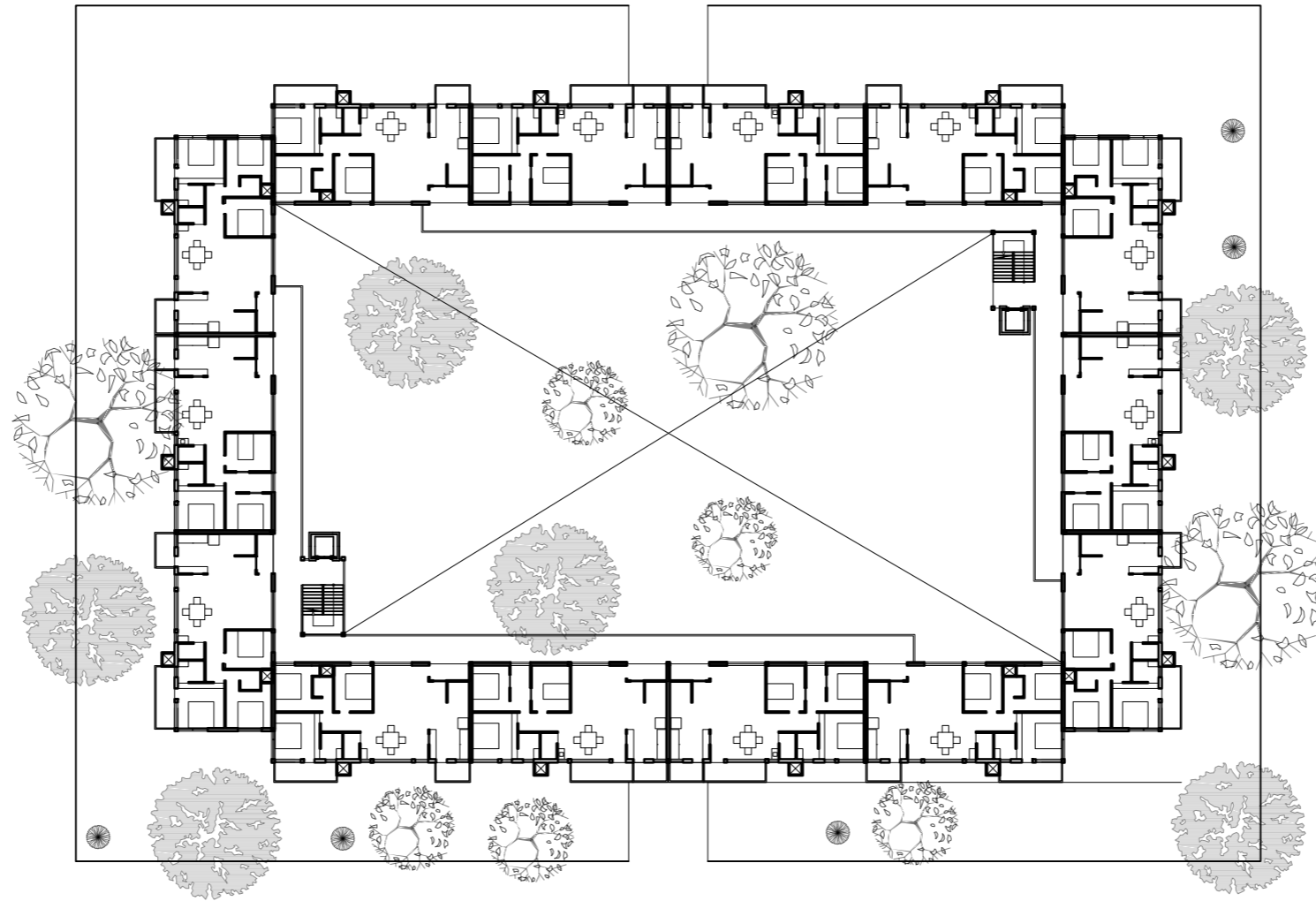
Site area = 5850 sq.m.

Permissible FSI= 2.7

Achieved FSI= $14,555.2/5850$

= 2.5

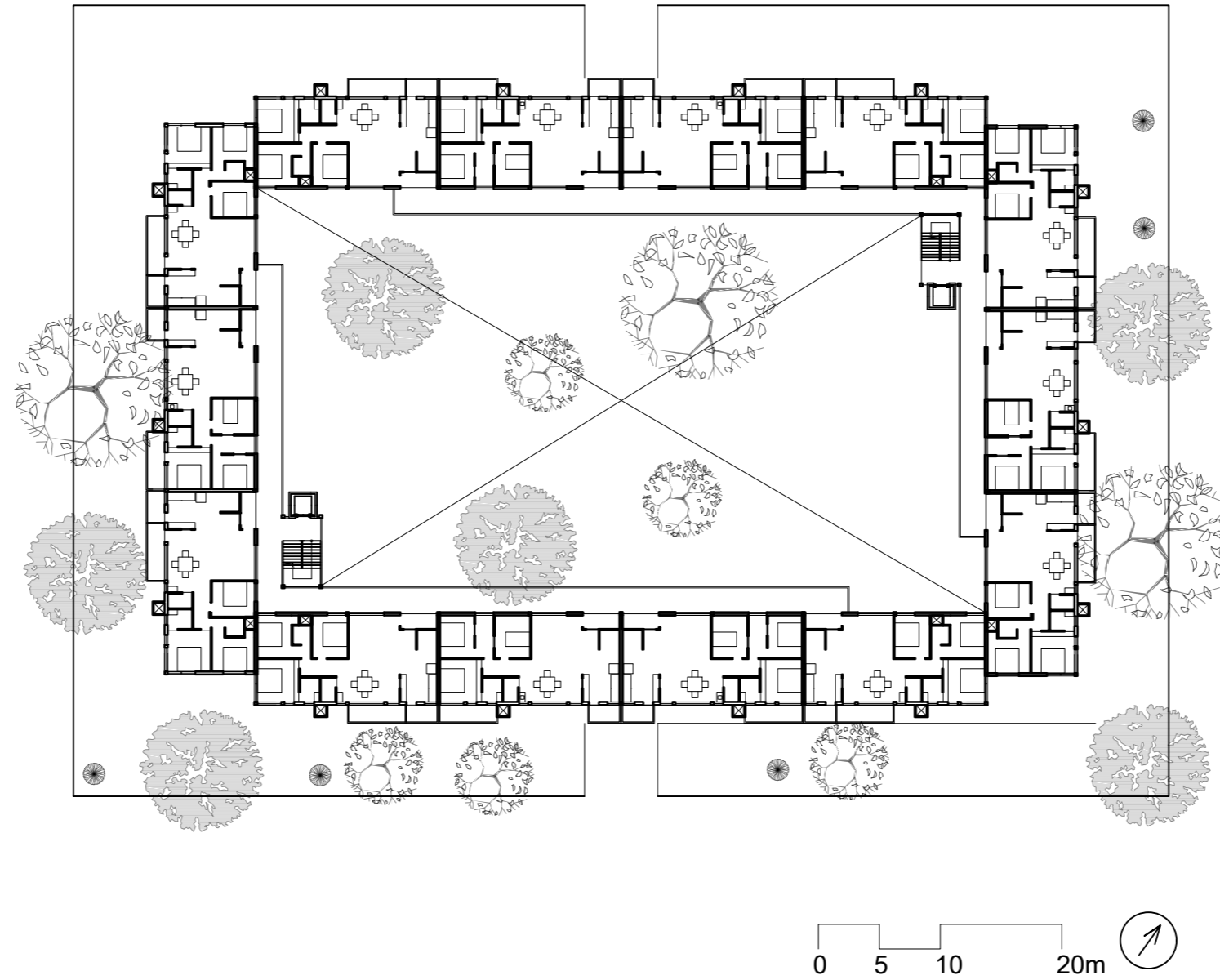




Floor level

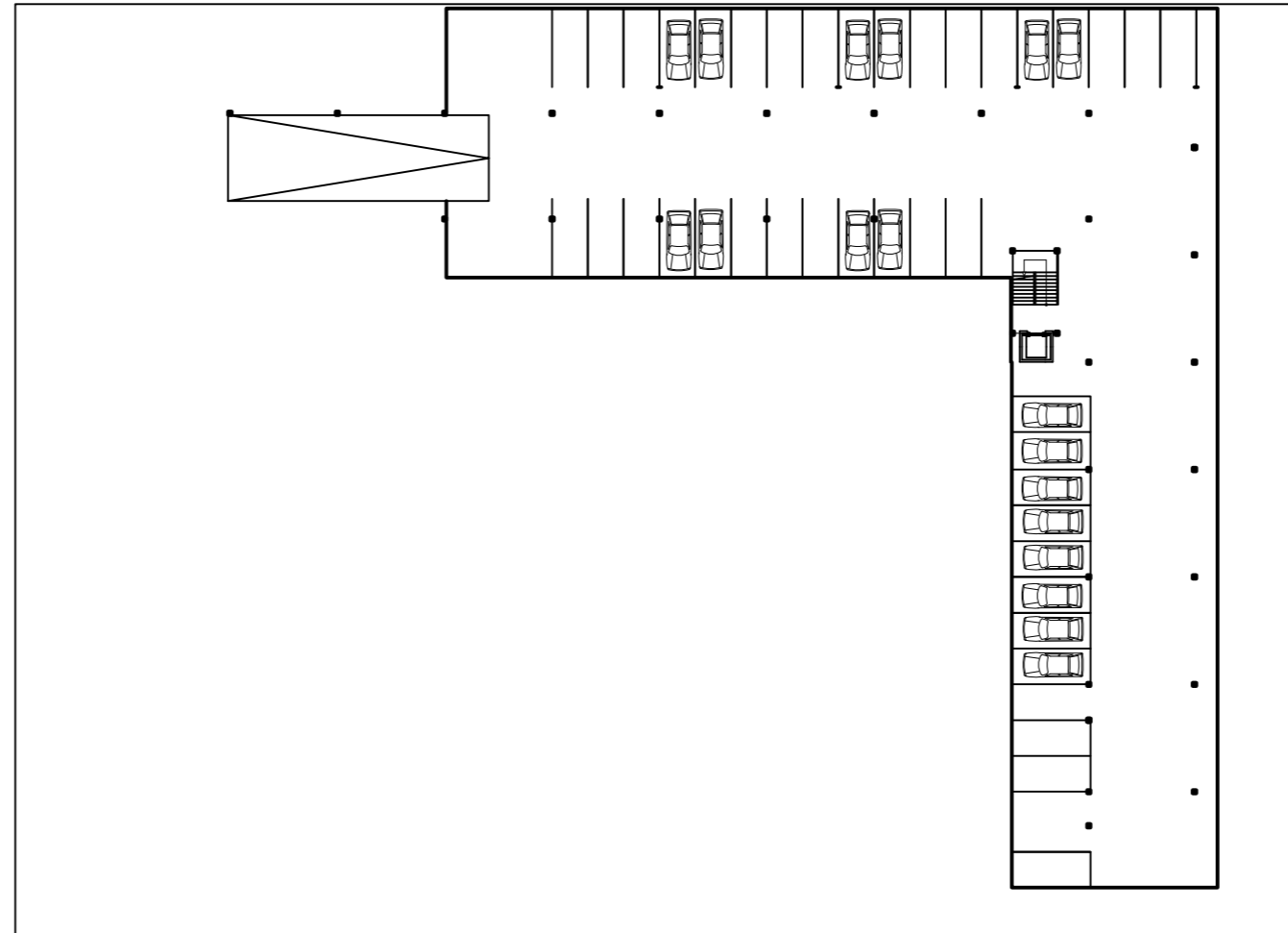
Super built up area= 2,179.95 sq.m.
Built up area = 1,819.4 sq.m.

units per floor =14 units

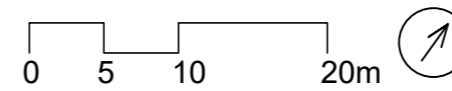


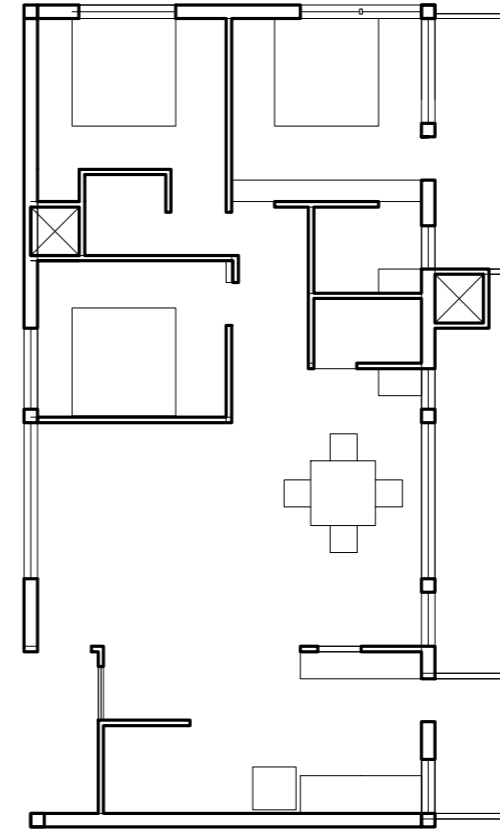
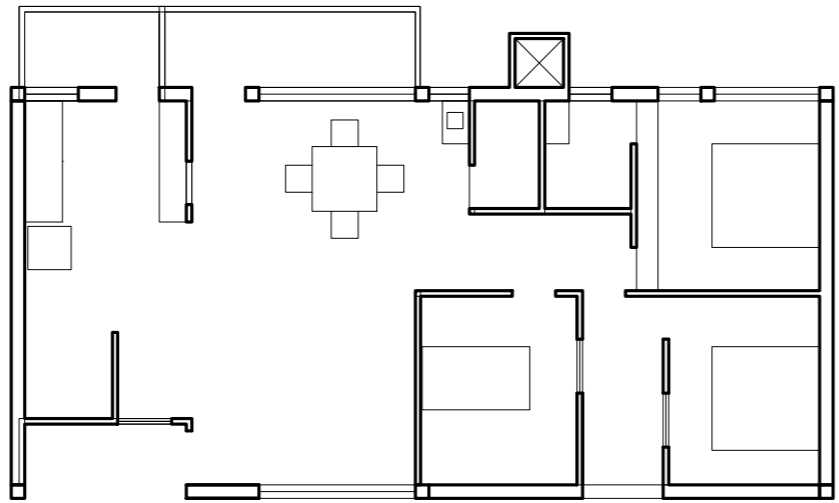
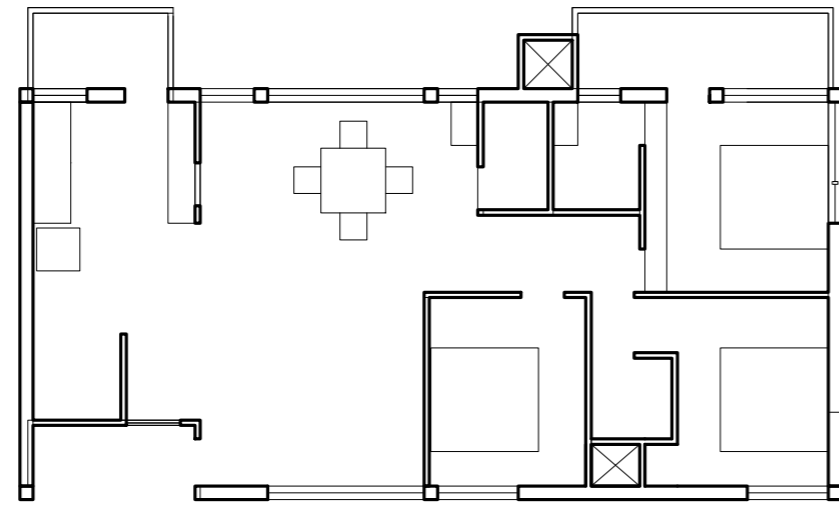
L3 STUDIO: OIKOPOLIS
TIME PROBLEM: 3
THE RISE OF THE COOPERATIVE
Komal G. |UA3916

Even Floor Plan



Surface + Basement Parking = 67 car parks





Unit Plans

Carpet area= 81 sq.m.

Built up area = 128.6 sq.m.

