

THE TWO LIVES

LIFE-SPAN

100 YEARS

CHANGEABILITY

LOW MED HIGH

STRUCTURE

SHOULD BE ABLE TO EXPAND IN FUTURE

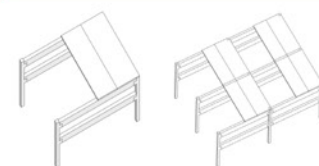
SHOULD BE NON OBSTRUCTIVE FOR INTERNAL PARTITIONING

ORGANISATION

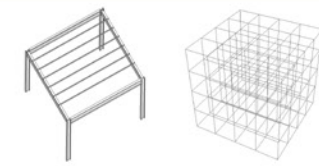
POSSIBILITY OF INTER-UNIT EXPANSION- HORIZONTAL AND VERTICAL

POSSIBILITY OF MULTIPLE LAY-OUTS OF GOOD QUALITY

STRUCTURE



PRE-FAB CONCRETE

HORIZONTAL AND VERTICAL EXPANSION
ALLOWS OPEN PLAN

STEEL ASSEMBLY- NEUTRAL GRID

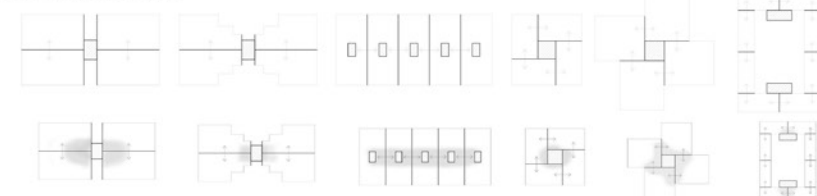
HORIZONTAL AND VERTICAL EXPANSION
ALLOWS OPEN PLAN

DRY, ASSEMBLY CONSTRUCTION

DRY, ASSEMBLY CONSTRUCTION

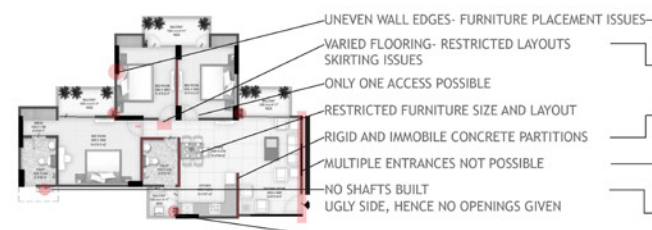
ORGANISATION

FLOOR PLAN ORGANISATION

POSSIBILITY OF INTER-UNIT EXPANSION
CONSOLIDATING SERVICE CORE
MAXIMISING OPEN EDGES

UNIT PLAN ORGANISATION

HURDLES IN ACHIEVING FLEXIBILITY



SOURCE: RANCHWHEEL PRATISHTHA BROCHURE

ROOM DIMENSIONS- NO FURTHER DIVISION POSSIBLE
NO SPACE FOR INCREASING STORAGE
NO ROOM FOR WINDOWS
DESPITE OF MANY OPEN EDGES- IT IS INFLEXIBLE

STRUCTURE SHOULD BE INDEPENDENT OF THE INFILL

UNIFORM FLOORING INCREASES FLEXIBILITY

PARTITIONS SHOULD BE LIGHT AND EASY TO MOVE

POSSIBILITY OF MULTIPLE ACCESSSES SHOULD EXIST

POTENTIAL OF THE OPEN EDGES SHOULD BE REALISED

MULTIPLE POINTS OF PIPELINE WORK ONLY IF ALL THE DUCT SIZES CAN ACCOMMODATE ANY SERVICE POSSIBLE

ENVELOPE

LIFE-SPAN

50 YEARS

CHANGEABILITY

LOW MED HIGH

SHOULD BE EASY TO CHANGE

SHOULD HAVE POSSIBILITIES OF USER INPUT

SHOULD NOT DIRECT THE INTERNAL PARTITIONING

SHOULD BE CLIMATICALLY RESPONSIVE

ENVELOPE



PREFAB CONCRETE PANELS

QUICK ASSEMBLY AND DISASSEMBLY
POSSIBLE SUBSEQUENT MODIFICATIONS

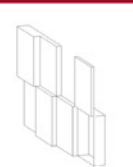
REGULAR DISTRIBUTION OF NEUTRAL WINDOWS

ENABLES MULTI-FUNCTIONAL USE



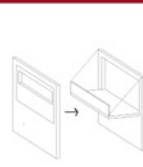
ADDING A LAYER IN BETWEEN

SPACE BETWEEN THE SKIN AND THE INNER PARTITION CAN BE MODIFIED OVERTIME



MODULAR CUSTOMISABLE FACADE

EACH UNIT MAKES ITS OWN ENVELOPE



FOLDABLE/MOVABLE ELEMENTS

ENABLES SEASONAL CHANGES

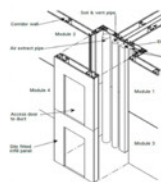
PLUMBING

CHANGE IN THE POSITION OF THE SERVICE AREAS

INCREASED INTAKE OF WATER IN THE FUTURE

EASY REPAIRING

PLUMBING



PREFAB SERVICE CORE

INCLUDES WATER AND SANITARY
EASY TO ASSEMBLE, DISASSEMBLE AND REMOVE

ADAPTABLE SERVICE CORES

WALLS, COLUMNS, FLOOR AND CEILING CAVITIES
ENABLE SHIFTING THE KITCHEN AND BATHROOM EASILY

DETACHABLE FURNITURE AND APPLIANCES

INDEPENDENT COMPONENTS WHICH CAN BE PLACED ANYWHERE

ELECTRICALS

CHANGE IN THE POSITION OF APPLIANCES IN FUTURE

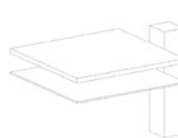
INCREASED INTAKE OF ELECTRICITY

EASY REPAIRING

ELECTRICALS



SEPARATED ELECTRICAL CORES

ADAPTABLE CEILINGS
CONTINUOUS FALSE-CEILINGS FOR INCREASED FLEXIBILITYCHANGEABLE ENVELOPE
GIVES ROOM FOR FUTURE TECHNOLOGIESADAPTABLE WALLS
CAVITY WALLS GIVE ROOM FOR MOBILITY OF APPLIANCES

SOURCE: TOWARDS AN OPEN AND USER DRIVEN HOUSING ARCHITECTURE

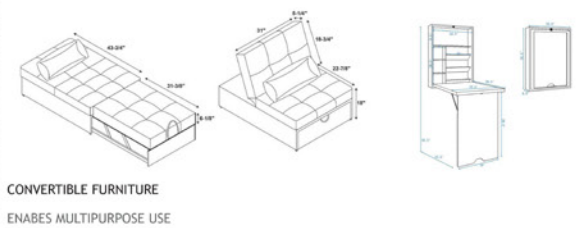
1

MR. & MRS. SHAH



SPACE
KITCHEN
BATHROOM
FOR GUESTS
TO SLEEP- 1
TO SLEEP-2
TO SLEEP-3
FOR DESK WORK
FOR STORAGE

INDIVIDUAL PRIVACY
LOW MED HIGH
MULTI-PURPOSE USE POSSIBLE
MULTI-PURPOSE USE POSSIBLE
MULTI-PURPOSE USE POSSIBLE



CONVERTIBLE FURNITURE

ENABLES MULTIPURPOSE USE

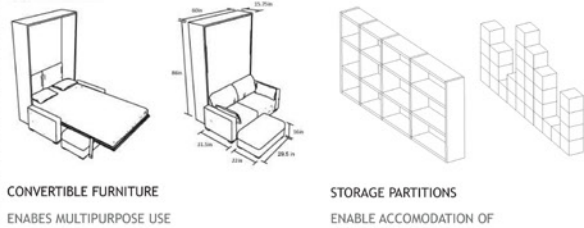
2

MR. -MRS. SHAH AND DUAUGHTER



SPACE
KITCHEN
BATHROOM
FOR GUESTS
TO SLEEP- 1
TO SLEEP-2
TO SLEEP-3
FOR DESK WORK
FOR STORAGE

INDIVIDUAL PRIVACY
LOW MED HIGH
MULTI-PURPOSE USE POSSIBLE
MULTI-PURPOSE USE POSSIBLE
MULTI-PURPOSE USE POSSIBLE
INCREASES



CONVERTIBLE FURNITURE

ENABLES MULTIPURPOSE USE

STORAGE PARTITIONS

ENABLE ACCOMODATION OF INCREASED STORAGE

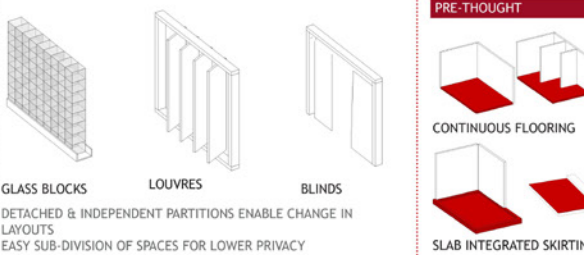
3

SHAHS, DAUGHTER AND SON



SPACE
KITCHEN
BATHROOM
FOR GUESTS
TO SLEEP- 1
TO SLEEP-2
TO SLEEP-3
FOR DESK WORK
FOR STORAGE

INDIVIDUAL PRIVACY
LOW MED HIGH
MULTI-PURPOSE USE POSSIBLE
MULTI-PURPOSE USE POSSIBLE
A ROOM IS INCREASED
MULTI-PURPOSE USE POSSIBLE



GLASS BLOCKS

LOUVRES

BLINDS

DETACHED & INDEPENDENT PARTITIONS ENABLE CHANGE IN LAYOUTS

EASY SUB-DIVISION OF SPACES FOR LOWER PRIVACY



PRE-THOUGHT

CONTINUOUS FLOORING

SLAB INTEGRATED SKIRTING

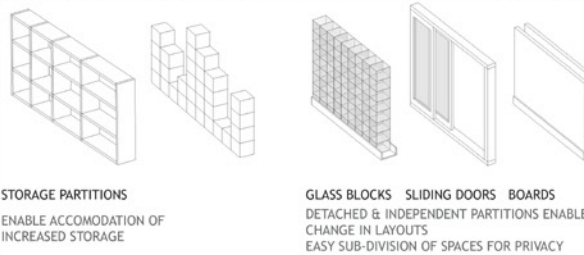
4

SHAHS, DAUGHTER AND SON



SPACE
KITCHEN
BATHROOM
FOR GUESTS
TO SLEEP- 1
TO SLEEP-2
TO SLEEP-3
FOR DESK WORK
FOR STORAGE

INDIVIDUAL PRIVACY
LOW MED HIGH
MULTI-PURPOSE USE POSSIBLE
MULTI-PURPOSE USE POSSIBLE
MULTI-PURPOSE USE POSSIBLE
INCREASES



STORAGE PARTITIONS

ENABLE ACCOMODATION OF INCREASED STORAGE

GLASS BLOCKS

SLIDING DOORS

BOARDS

DETACHED & INDEPENDENT PARTITIONS ENABLE CHANGE IN LAYOUTS

EASY SUB-DIVISION OF SPACES FOR PRIVACY

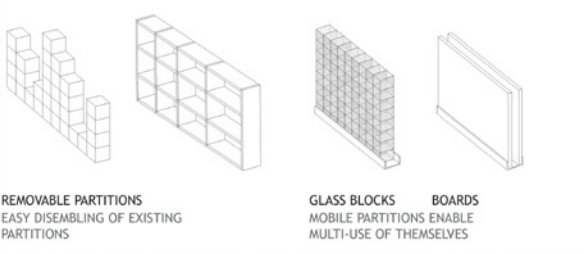
5

SHAHS AND SON



SPACE
KITCHEN
BATHROOM
FOR GUESTS
TO SLEEP- 1
TO SLEEP-2
TO SLEEP-3
FOR DESK WORK
FOR STORAGE

INDIVIDUAL PRIVACY
LOW MED HIGH
MULTI-PURPOSE USE POSSIBLE
MULTI-PURPOSE USE POSSIBLE
MULTI-PURPOSE USE POSSIBLE
DECREASES



REMOVABLE PARTITIONS

EASY DISEMBLING OF EXISTING PARTITIONS

GLASS BLOCKS

BOARDS

MOBILE PARTITIONS ENABLE MULTI-USE OF THEMSELVES

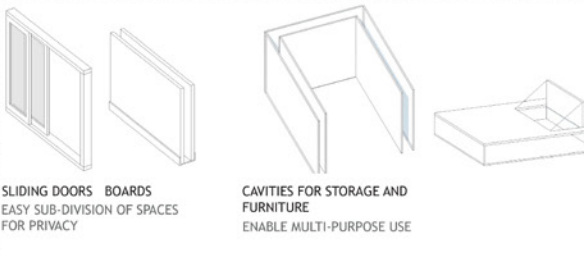
6

SHAHS, SON AND DAUGHTER-IN-LAW



SPACE
KITCHEN
BATHROOM
FOR GUESTS
TO SLEEP- 1
TO SLEEP-2
TO SLEEP-3
FOR DESK WORK
FOR STORAGE

INDIVIDUAL PRIVACY
LOW MED HIGH
MULTI-PURPOSE USE POSSIBLE
MULTI-PURPOSE USE POSSIBLE
MULTI-PURPOSE USE POSSIBLE
INCREASES



SLIDING DOORS

BOARDS

EASY SUB-DIVISION OF SPACES FOR PRIVACY

CAVITIES FOR STORAGE AND FURNITURE

ENABLE MULTI-PURPOSE USE

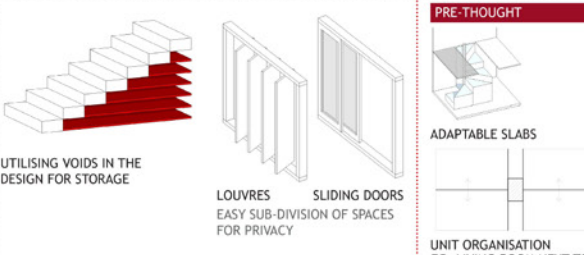
7

SHAHS & SON'S FAMILY



SPACE
KITCHEN
BATHROOM
FOR GUESTS
TO SLEEP- 1
TO SLEEP-2
TO SLEEP-3
FOR DESK WORK
FOR STORAGE

INDIVIDUAL PRIVACY
LOW MED HIGH
MULTI-PURPOSE USE POSSIBLE
MULTI-PURPOSE USE POSSIBLE
A ROOM IS INCREASED
MULTI-PURPOSE USE POSSIBLE
INCREASES

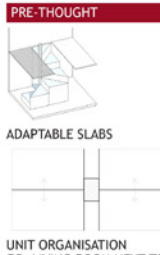


UTILISING VOIDS IN THE DESIGN FOR STORAGE

LOUVRES

SLIDING DOORS

EASY SUB-DIVISION OF SPACES FOR PRIVACY



PRE-THOUGHT

ADAPTABLE SLABS

UNIT ORGANISATION

EG: LIVING ROOM NEXT TO LIVING ROOM ETC

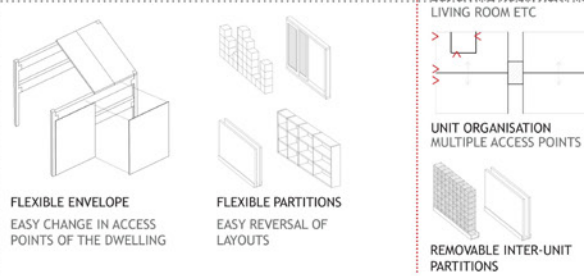
8

MR. & MRS. SHAH



SPACE
KITCHEN
BATHROOM
FOR GUESTS
TO SLEEP- 1
TO SLEEP-2
TO SLEEP-3
FOR DESK WORK
FOR STORAGE

INDIVIDUAL PRIVACY
LOW MED HIGH
MULTI-PURPOSE USE POSSIBLE
MULTI-PURPOSE USE POSSIBLE
TWO ROOMS ARE DECREASED
MULTI-PURPOSE USE POSSIBLE
DECREASES



FLEXIBLE ENVELOPE

EASY CHANGE IN ACCESS POINTS OF THE DWELLING

FLEXIBLE PARTITIONS

EASY REVERSAL OF LAYOUTS



UNIT ORGANISATION

MULTIPLE ACCESS POINTS

REMOVABLE INTER-UNIT PARTITIONS