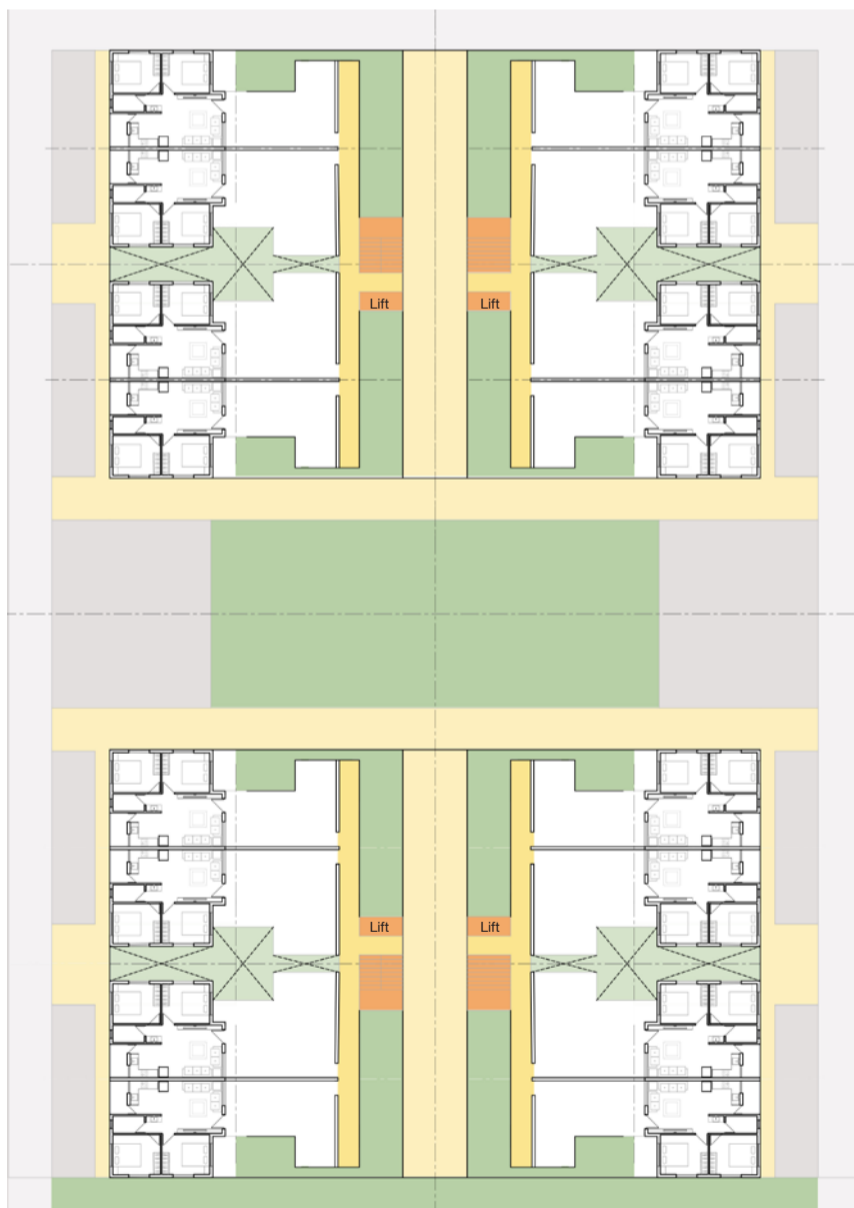
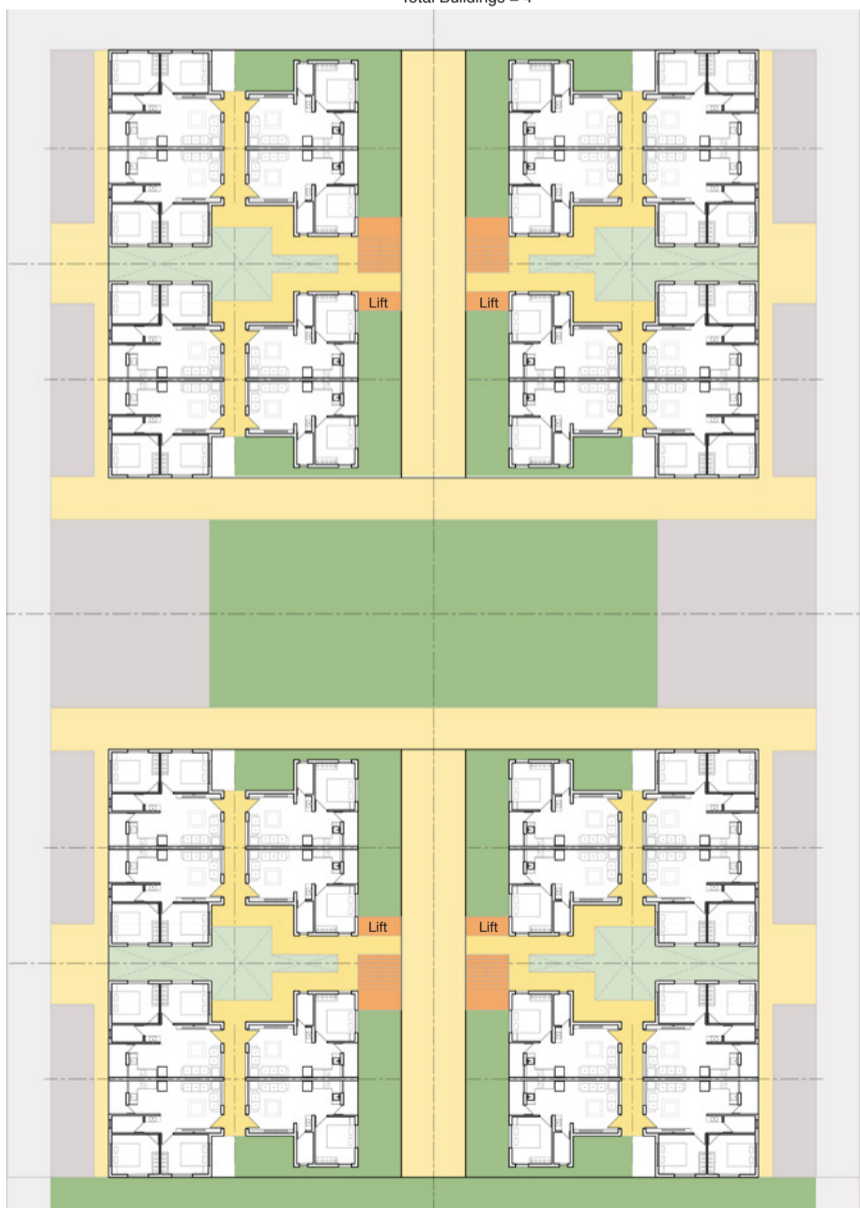
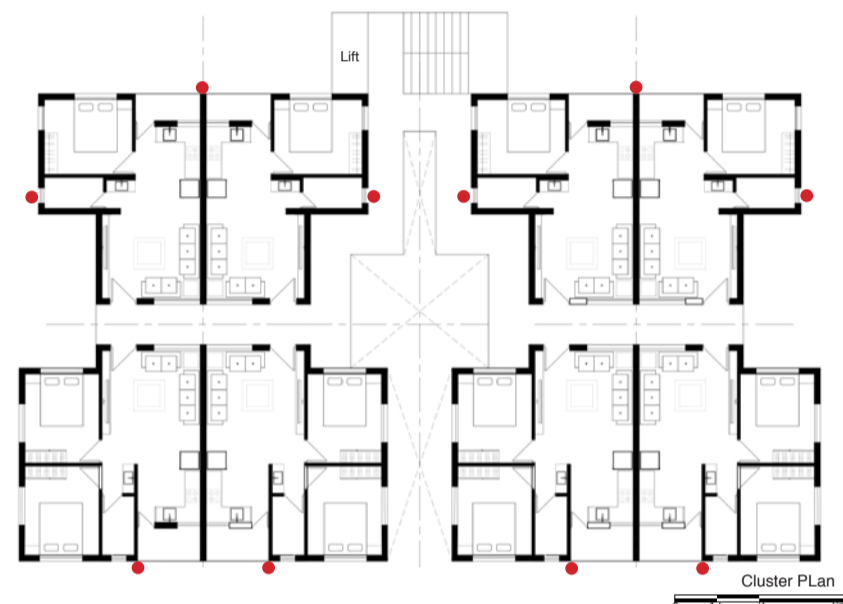
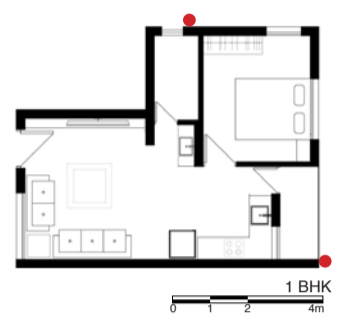
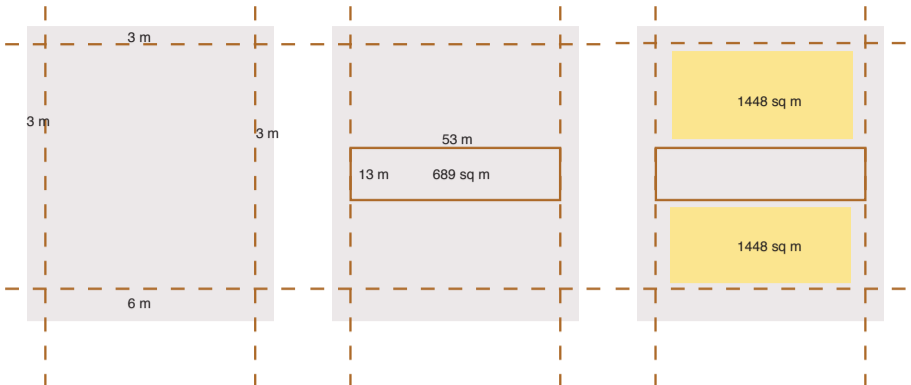


- Pedestrian street
- Open spaces
- Access Road
- Security Cabin
- Parking spots
- Security cabin

Total Built up Area = $1.8 \times 65 \times 90 = 10530$ sq m
 Total Utilised Area = 10528 sq m
 2 BHK Unit Area = 53 sq m
 1 BHK Unit Area = 41 sq m
 Total 1 BHK units = 112
 Total 2 BHK Units = 112
 Total number of floors = G + 6
 Total Buildings = 4



Heer Shah UA2616