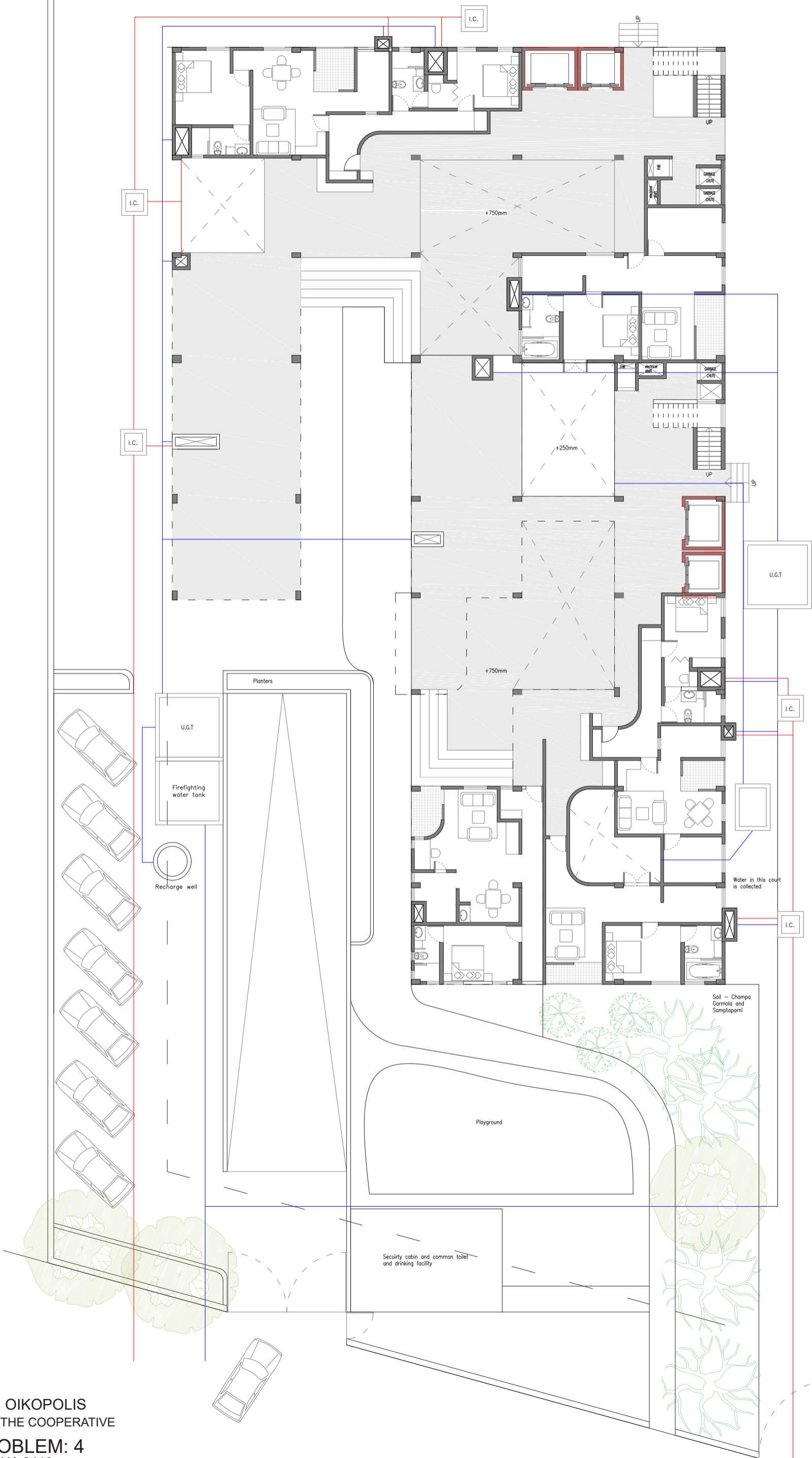
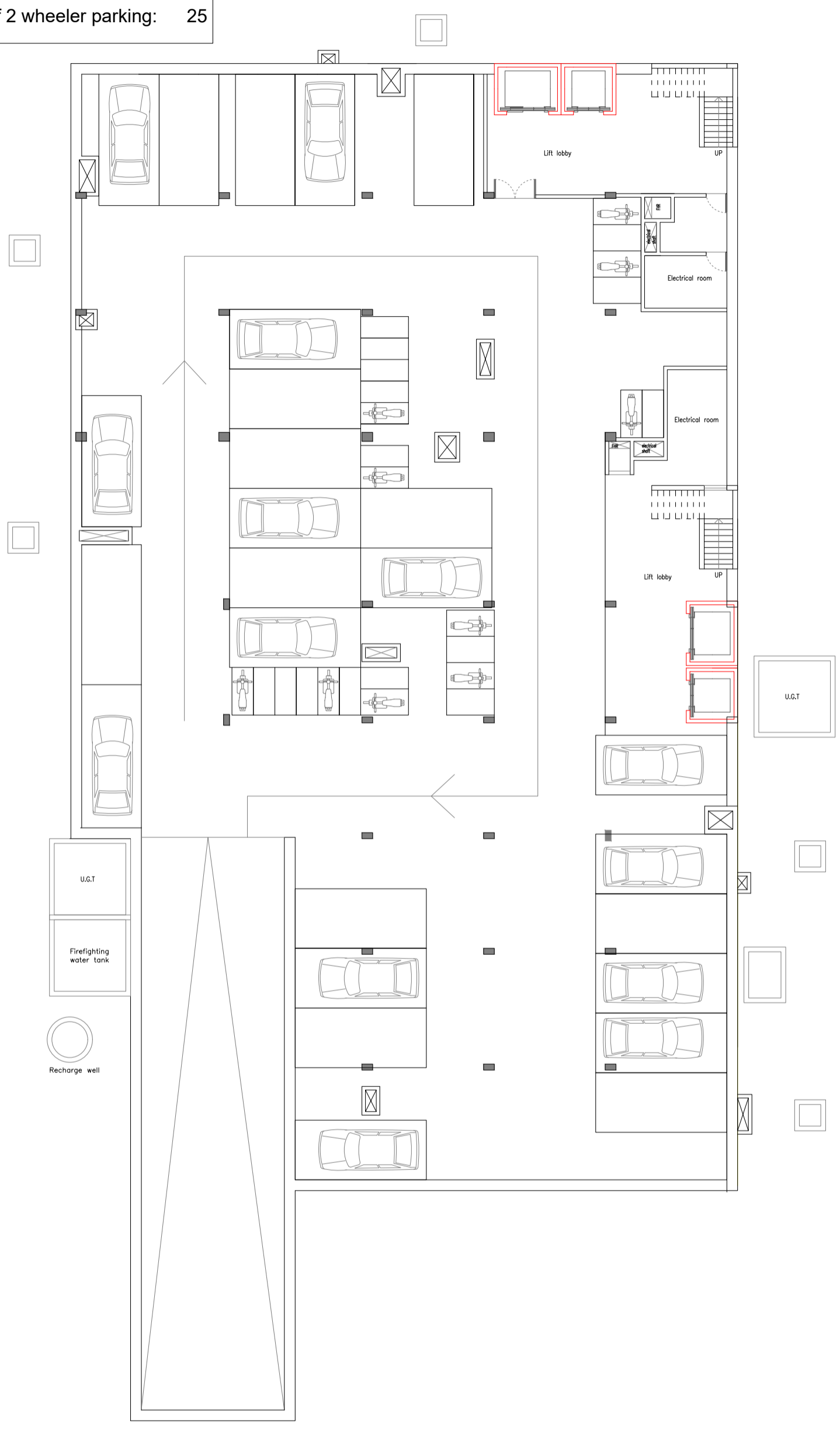


Ground floor

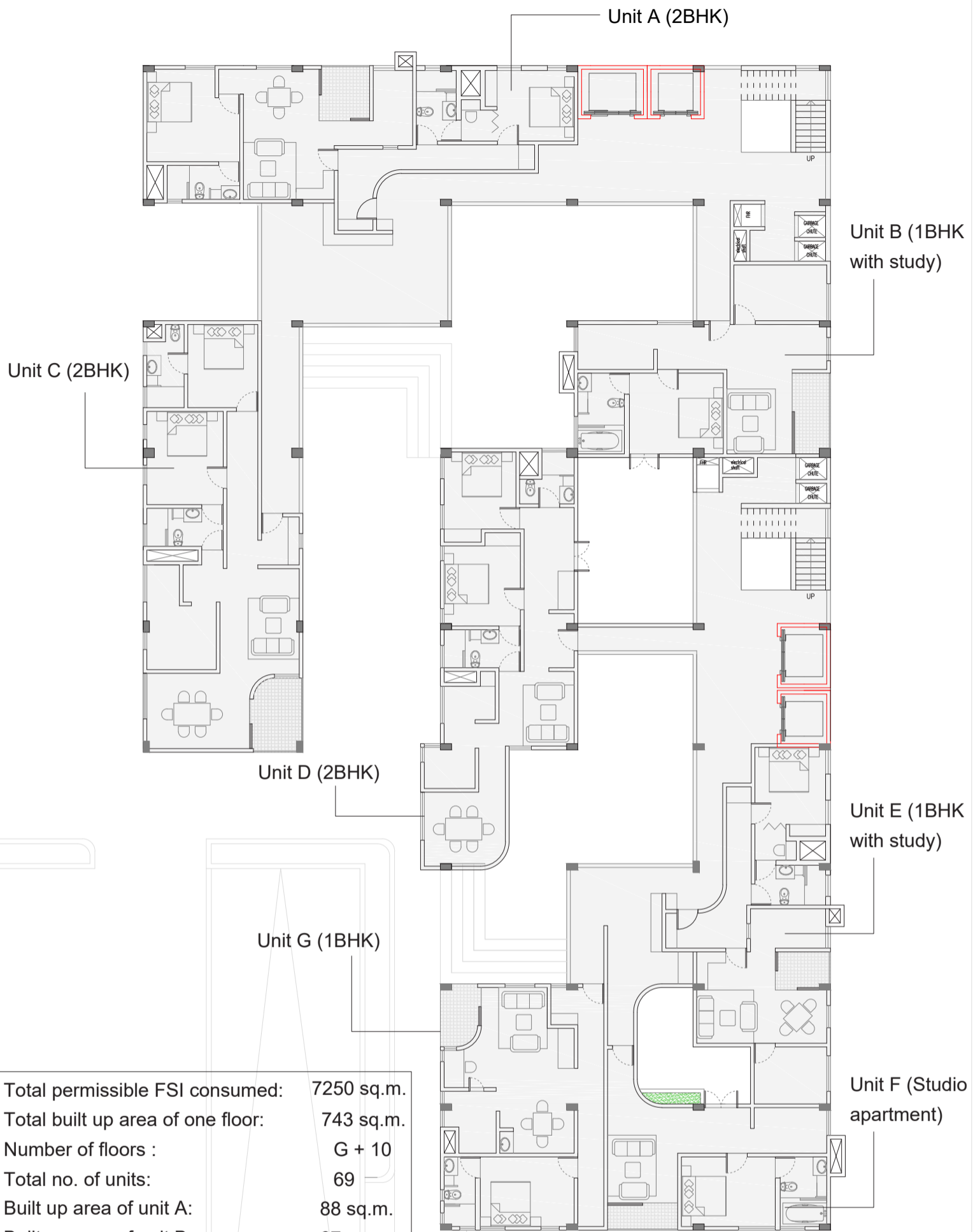


Basement

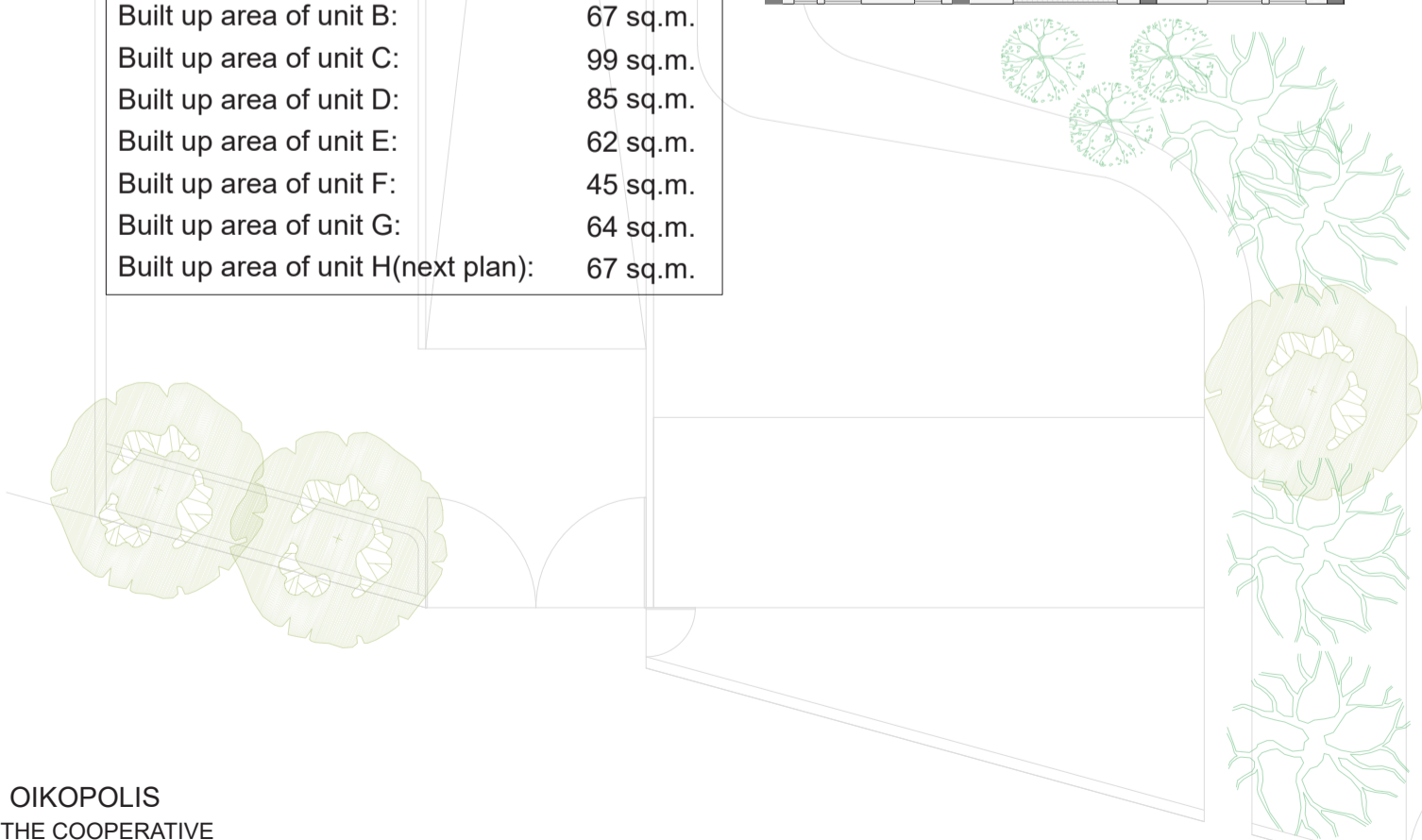
No. of 4 wheeler parking: 26
No. of 2 wheeler parking: 25



First to fifth floor plan



Total permissible FSI consumed:	7250 sq.m.
Total built up area of one floor:	743 sq.m.
Number of floors :	G + 10
Total no. of units:	69
Built up area of unit A:	88 sq.m.
Built up area of unit B:	67 sq.m.
Built up area of unit C:	99 sq.m.
Built up area of unit D:	85 sq.m.
Built up area of unit E:	62 sq.m.
Built up area of unit F:	45 sq.m.
Built up area of unit G:	64 sq.m.
Built up area of unit H(next plan):	67 sq.m.



Sixth to tenth floor plan



Unit H (2BHK)

Common terrace

