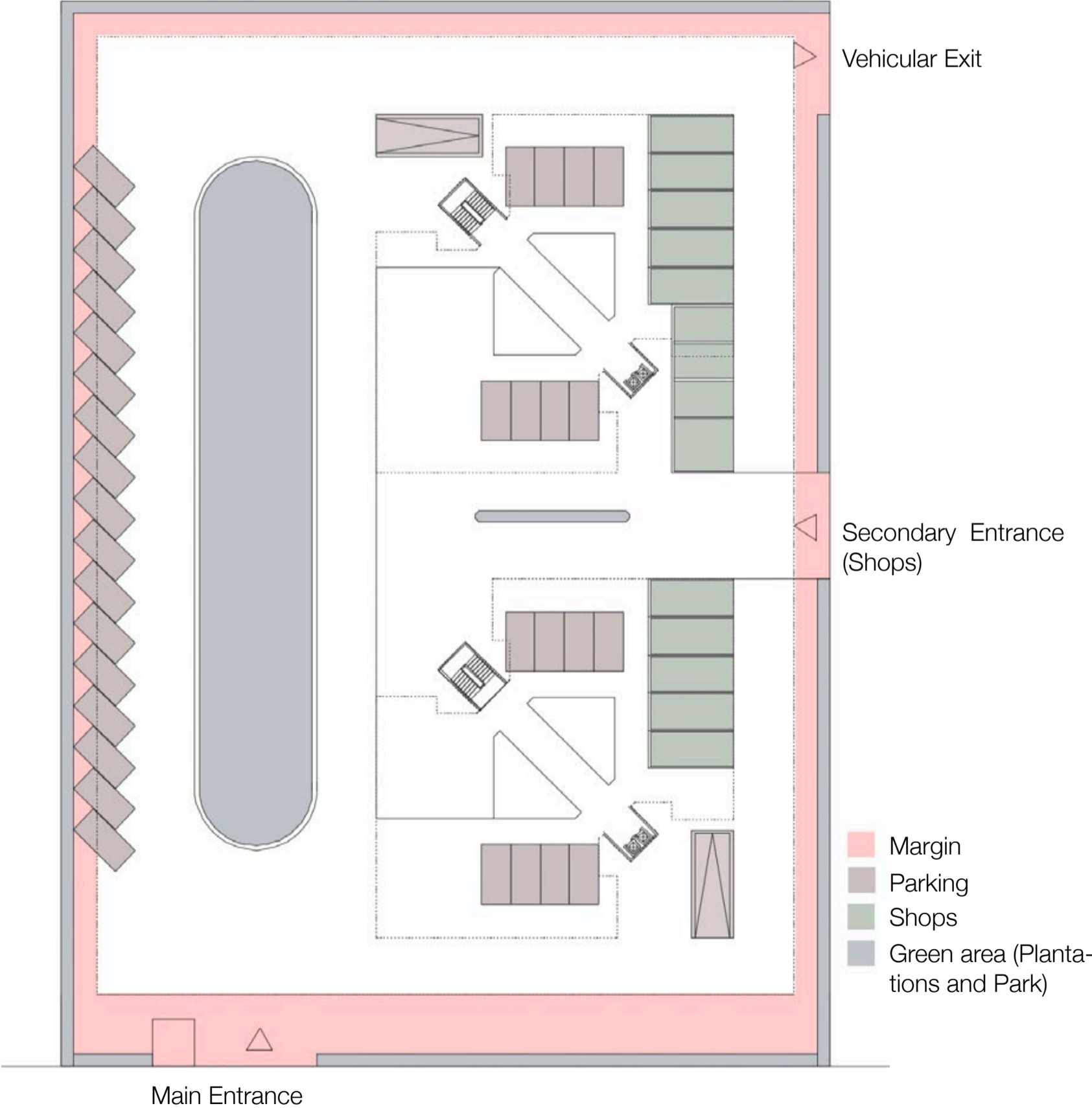
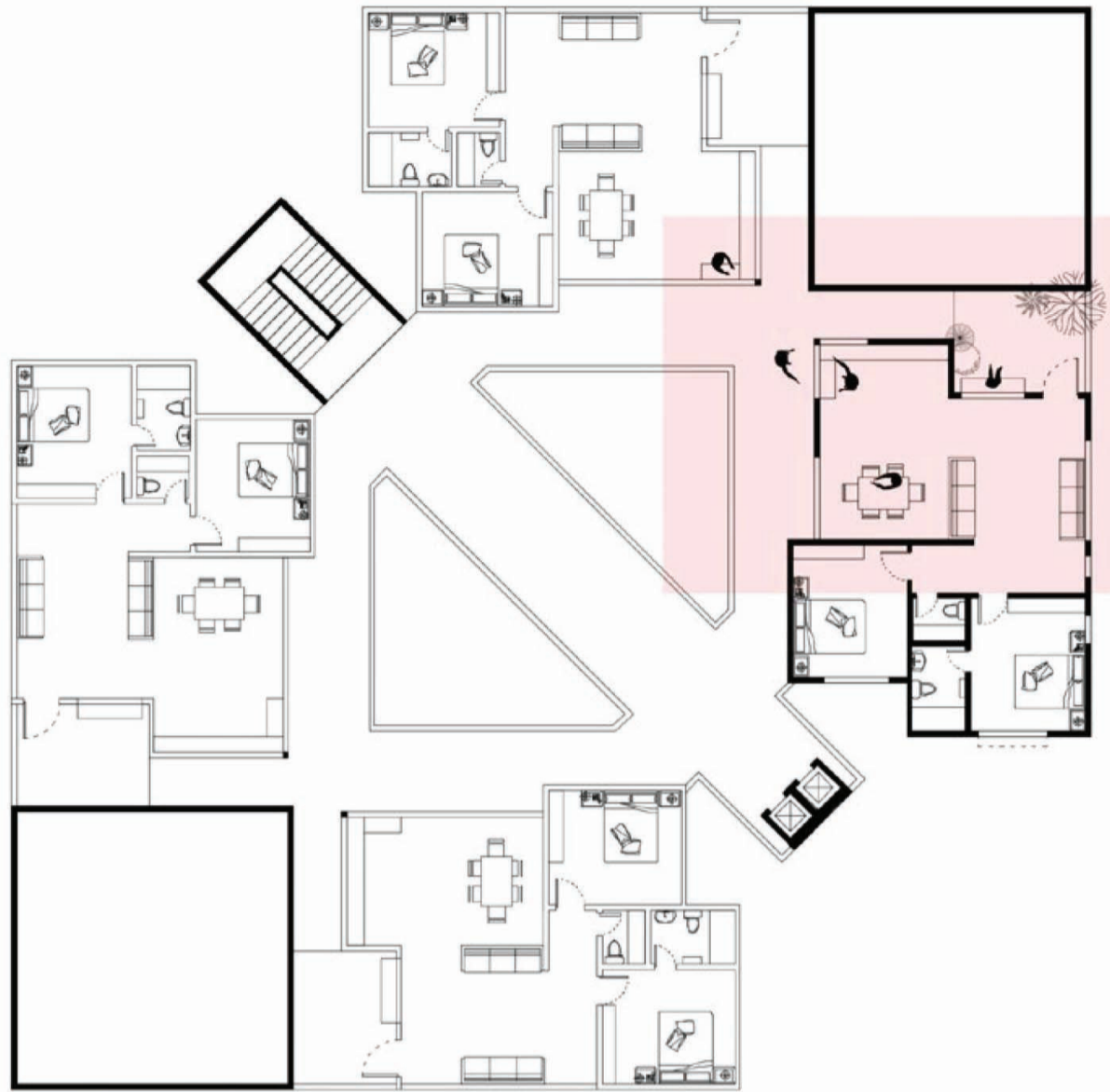


Time Problem 1 : Redevelopment of Ekta Apartments, Shastri Nagar

Site Area : 6500 mt sq
FSI allowed : 4

No of Blocks : 2
No of Floors in each block : 9
No of Flats on each floor : 4 units of 2BHK and 2 units of 1BHK
Built up area of 2BHK unit: 91 sqmt
Built up area of each floor : 661.33 sqmt
Hence, Total built up area : $661.33 \times 9 \times 2 = 11903.94$ sqmt
Total 2BHK units : 72 units
Total 1BHK units : 36 units
Total shops provided: 14 units





Floor Plan showing 2 BHK units and 1 BHK units and the imagined life.

