

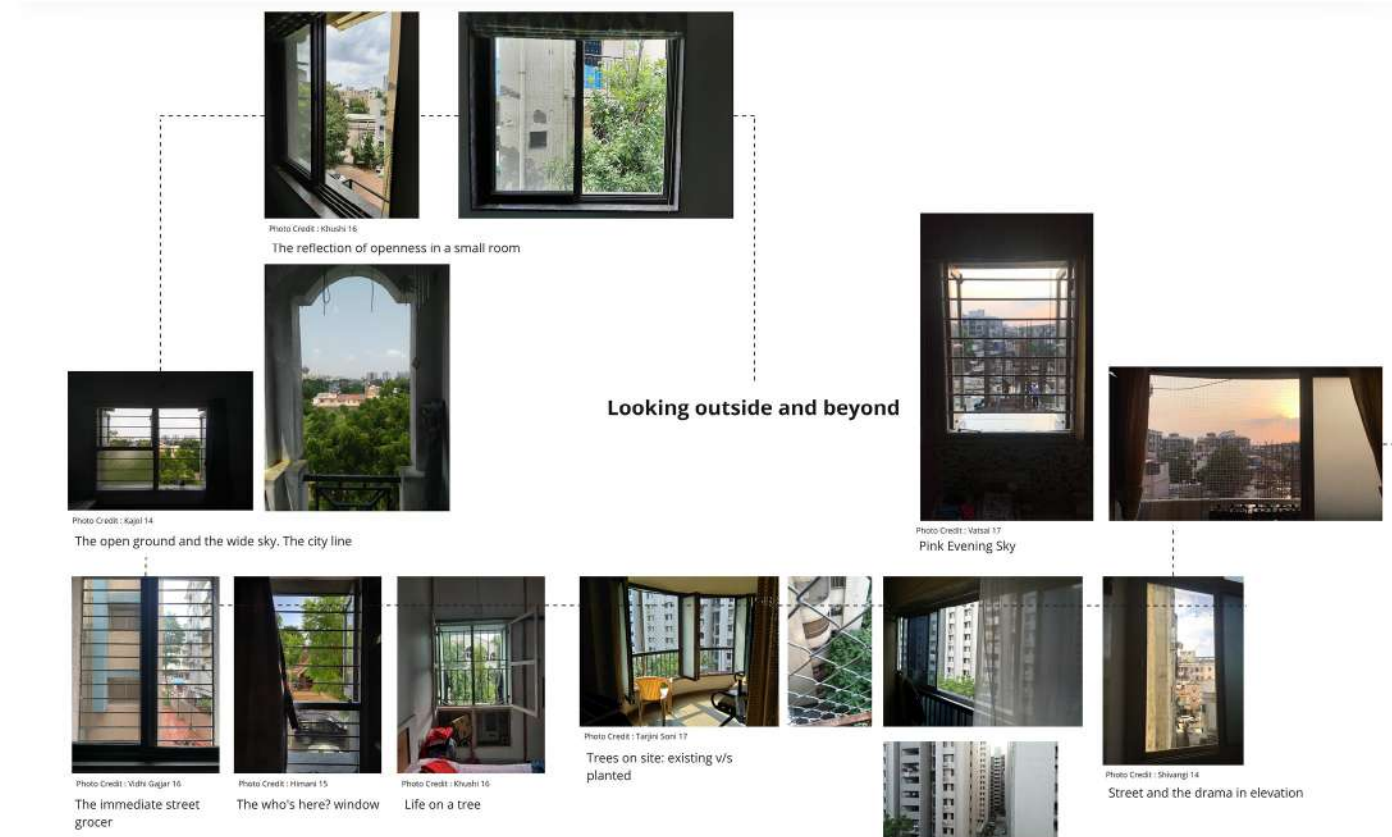


PORTFOLIO

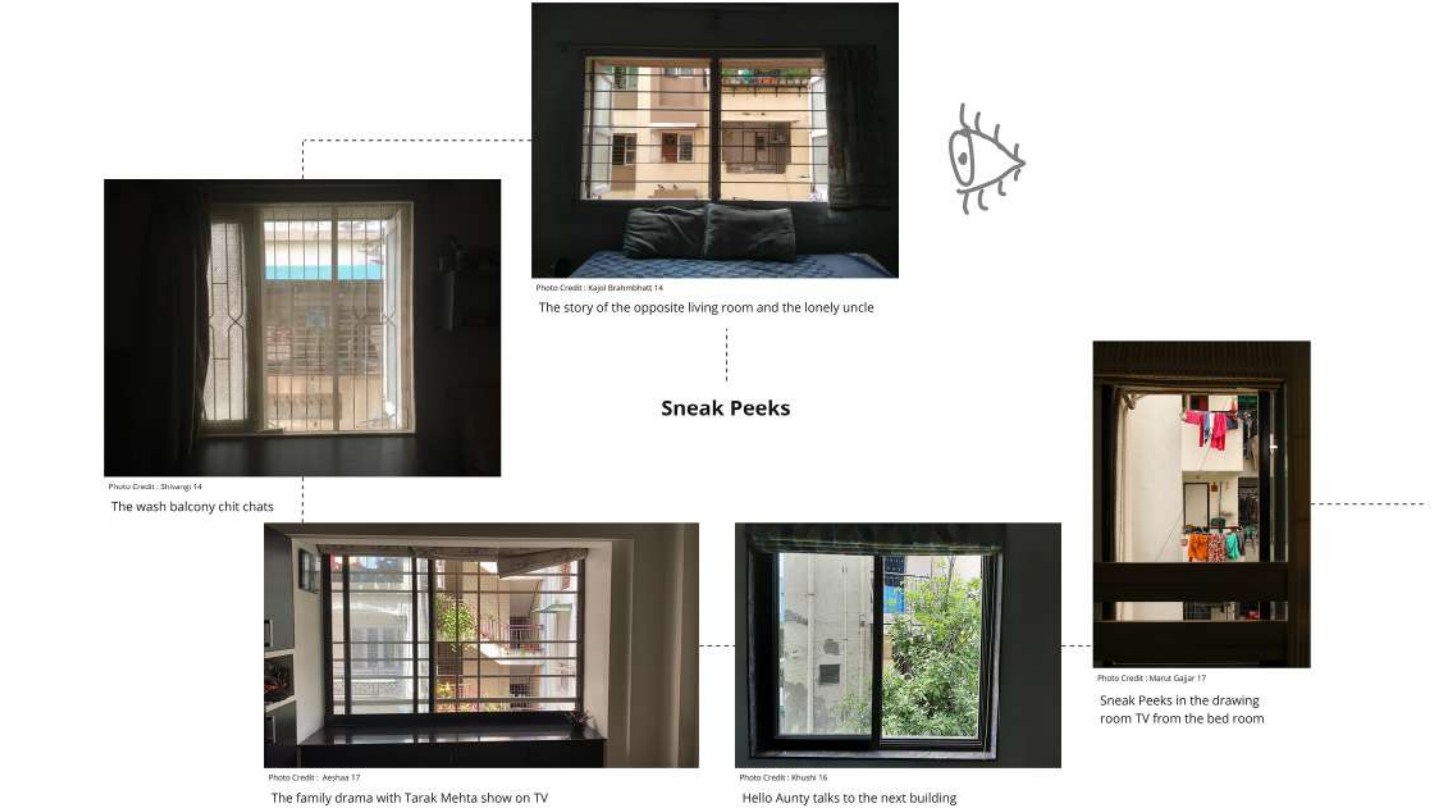
MONSOON 2020
KOMAL GANDHI
UA3916

Connection of window to the outside in mass housing

In my seminar, I tried to look at the experiences around a window in apartments. To understand how the additions done by the user and the view that is seen from the window creates a social life of the window.



The window not only brings a connection to outside, but it also impacts the spaciality of the space it looks out of. There seems to be a significant difference between the feeling of a room where the window looks out into open ground versus looking onto a lot of other apartments.

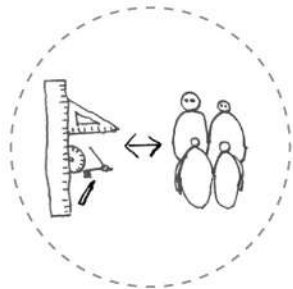


A window looking into another window creates certain unexpected connection between two houses. It brings in a different nature of interaction between the people.

Key Learnings



Designing keeping in mind the need of user group will reduce the gap between design and the built.



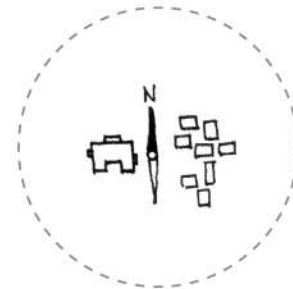
CONCERNS AND KEY LEARNINGS



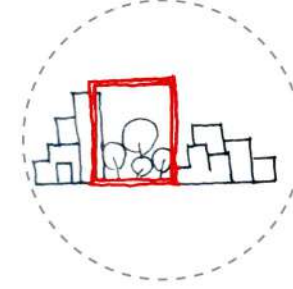
Window looking into nature and it's impact on the feeling of the space.



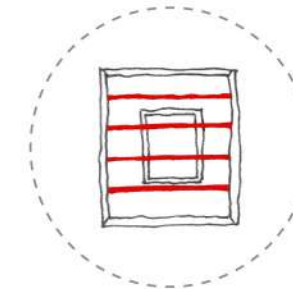
Orientation and position of the window



Capturing view from the window that impacts the space.



The security aspect and the opportunity to design a social space.



The possibility to see beyond brings the feeling of openness.





VIEW A



VIEW D



VIEW B



VIEW E



VIEW C



VIEW F



REDEVELOPMENT OF SHANTI AND RAVI APARTMENTS

SITE LOCATION : NARANPURA, AHMEDABAD

SITE AREA : 9,850 sq.m

FSI : 2.7

PERMISSIBLE BUILT UP : 26,595 sq.m

204 HOUSES FOR THE EXISTING RESIDENTS

Sale Component

Residential Unit Area

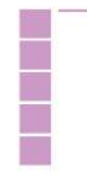


Type A
69.6 sqm.
X 13



Type B
74.7 sqm.
X 56

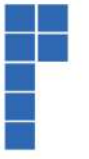
Commercial Unit Area



51 sqm.
X 14

Non-Sale Component

Residential Unit Area



Type A
69.6 sqm.
X 204

10 sqm. area



Parking

Residential



273

Guest



15

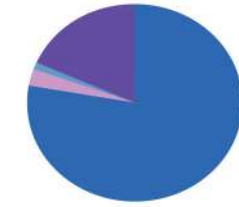
Commercial



10

20 Cars 10 Cars

Total Area %



- (A) RERA Carpet Area (Units)
- (B) Commercial Area -
- (C) Circulation - (Non-Free of FSI)
- (D) Amenities-

FSI - 2.7
Achieved

Windows in all WC to ensure proper ventilation and a sneak peek to outside.

Common wash basin near the dining for general use.

Additional platform for electronic appliances.

Kitchen with corner windows to watch over the main door and the common corridor.



UNIT A
AREA= 93.2 sq.m.
NO. OF UNITS= 217

- 1. Verendah
- 2. Living
- 3. Kitchen
- 4. Storage
- 5. Chokdi
- 6. Dining
- 7. Bed room 1
- 9.10. WC
- 11. Corridor

Common wash basin with a window to look out from dining area.

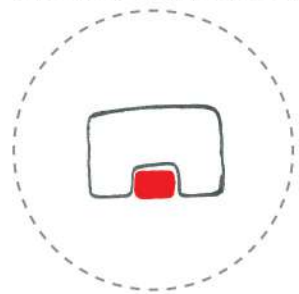
Chokdi towards the shared edge to create opening.



UNIT B
AREA= 98.4 sq.m.
NO. OF UNITS= 54

- 1. Verendah
- 2. Living
- 3. Kitchen
- 4. Storage
- 5. Chokdi
- 6. Dining
- 7.8. Bed room 1
- 9.10. WC
- 11. Corridor

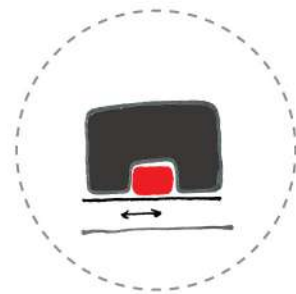
Verendah as an outside space, a memory of the ground



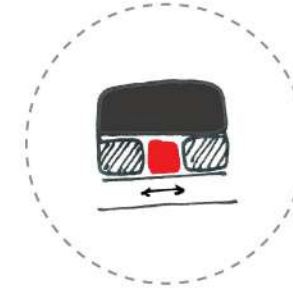
Corridor as a spill-over area



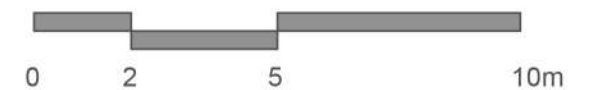
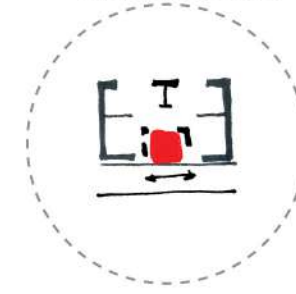
House around verendah

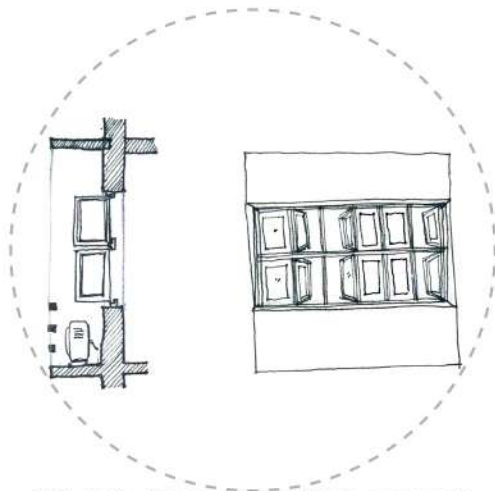


Private and Semi-private spaces

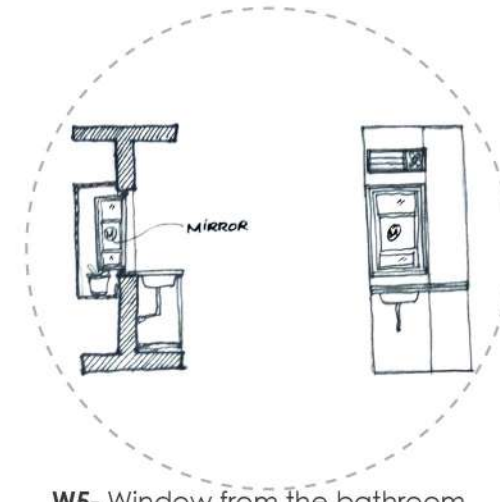
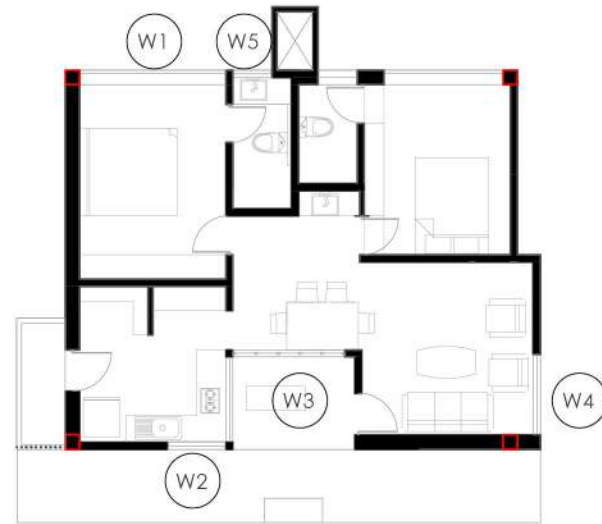


Windows opening on the two opposite edges

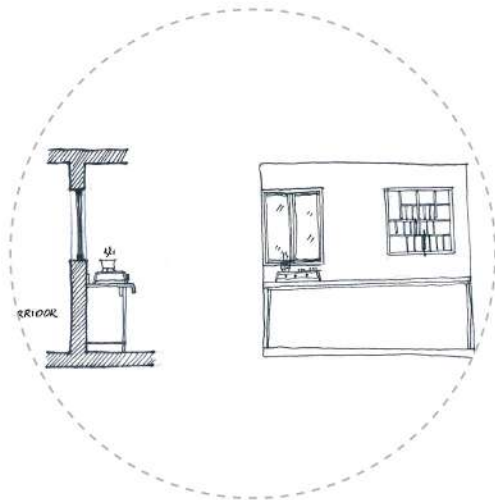




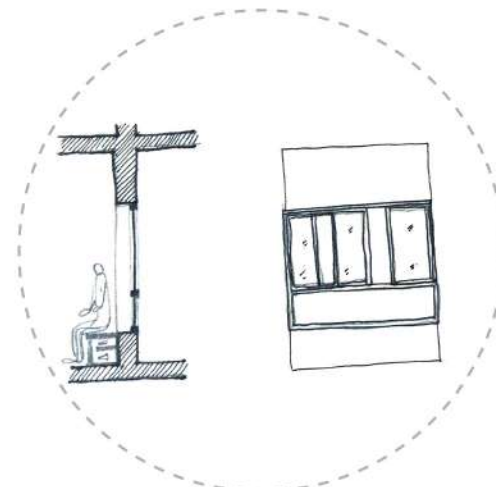
W1- Window with multiple pannels to control the size of the opening



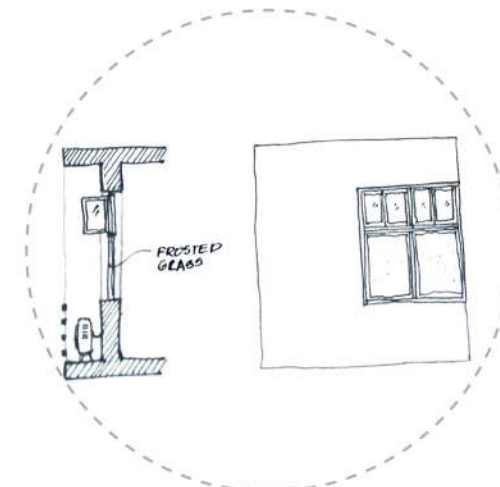
W5- Window from the bathroom with a fixed mirror panel



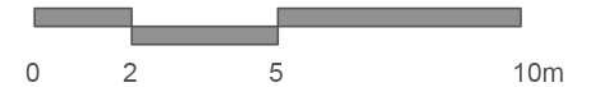
W2- Sliding window to avoid any hinder towards the corridor

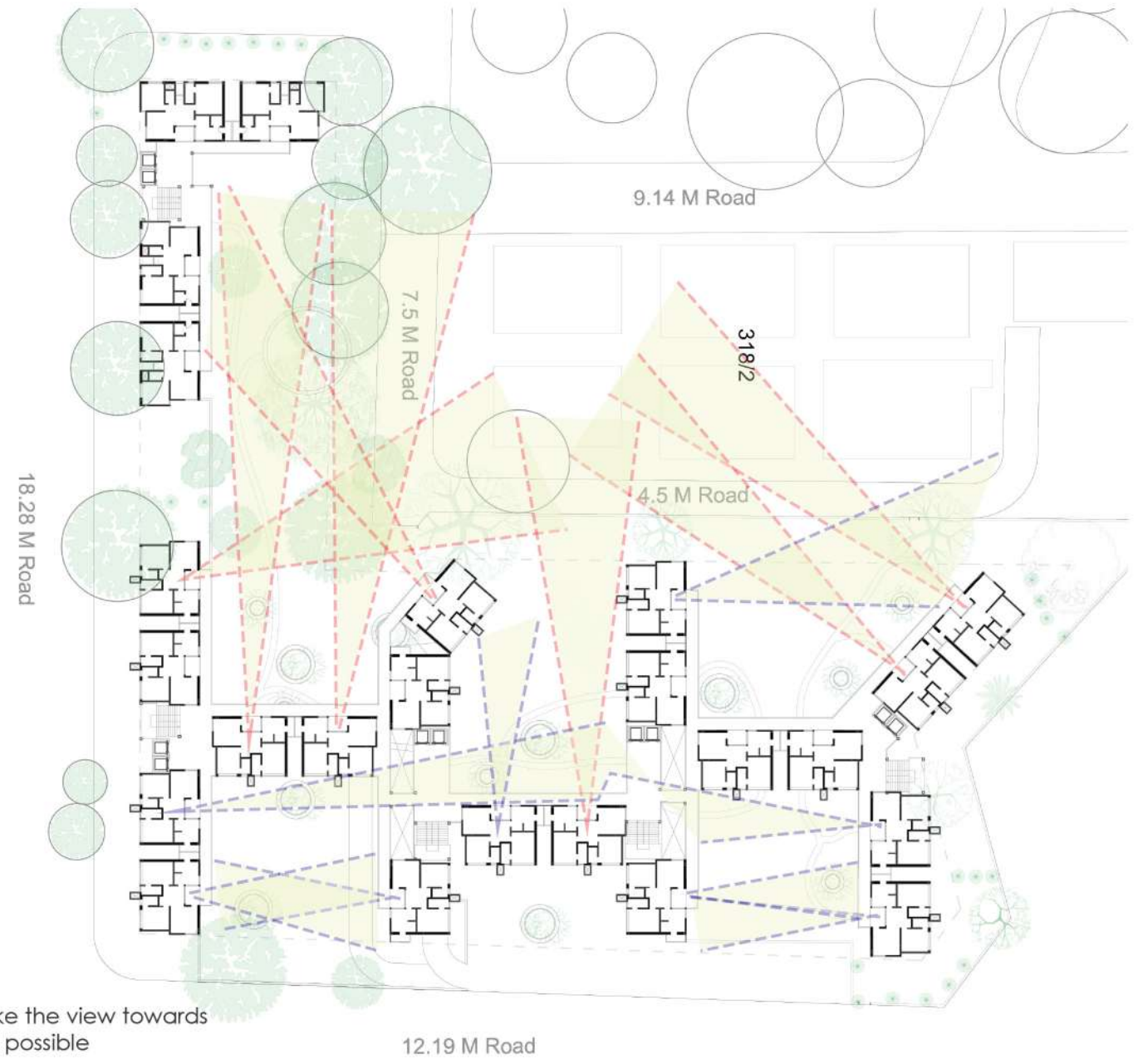


W3- Window with a fixed panel for back rest



W4- Partially openable window for ventilation







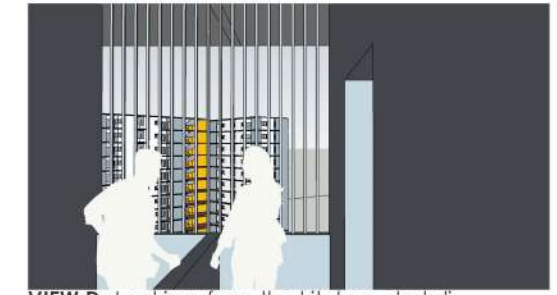
VIEW A - Looking from a bedroom into the inner core of the apartment



VIEW B - Looking from verandah into the kitchen space



VIEW C - Looking from one extreme of an apartment towards the dense trees



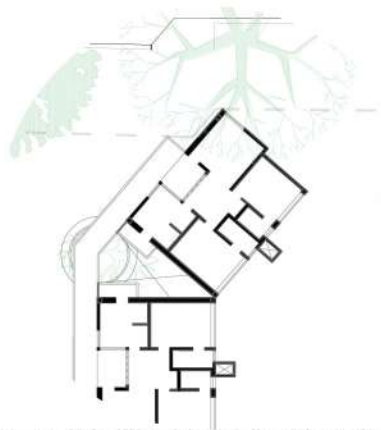
VIEW D - Looking from the kitchen chokdi



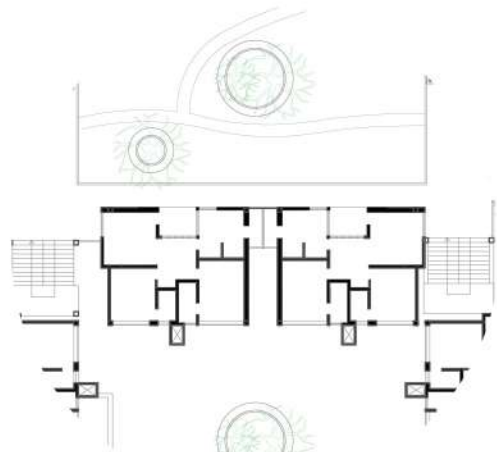
VIEW E - Looking from the verandah to the other block



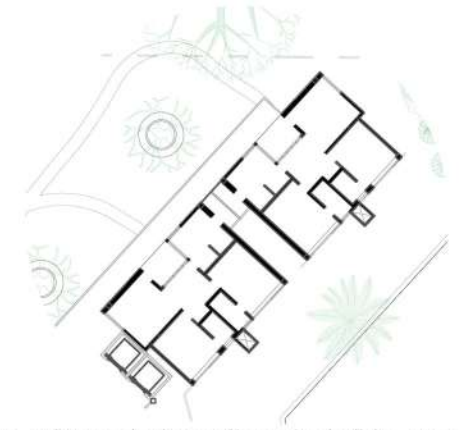
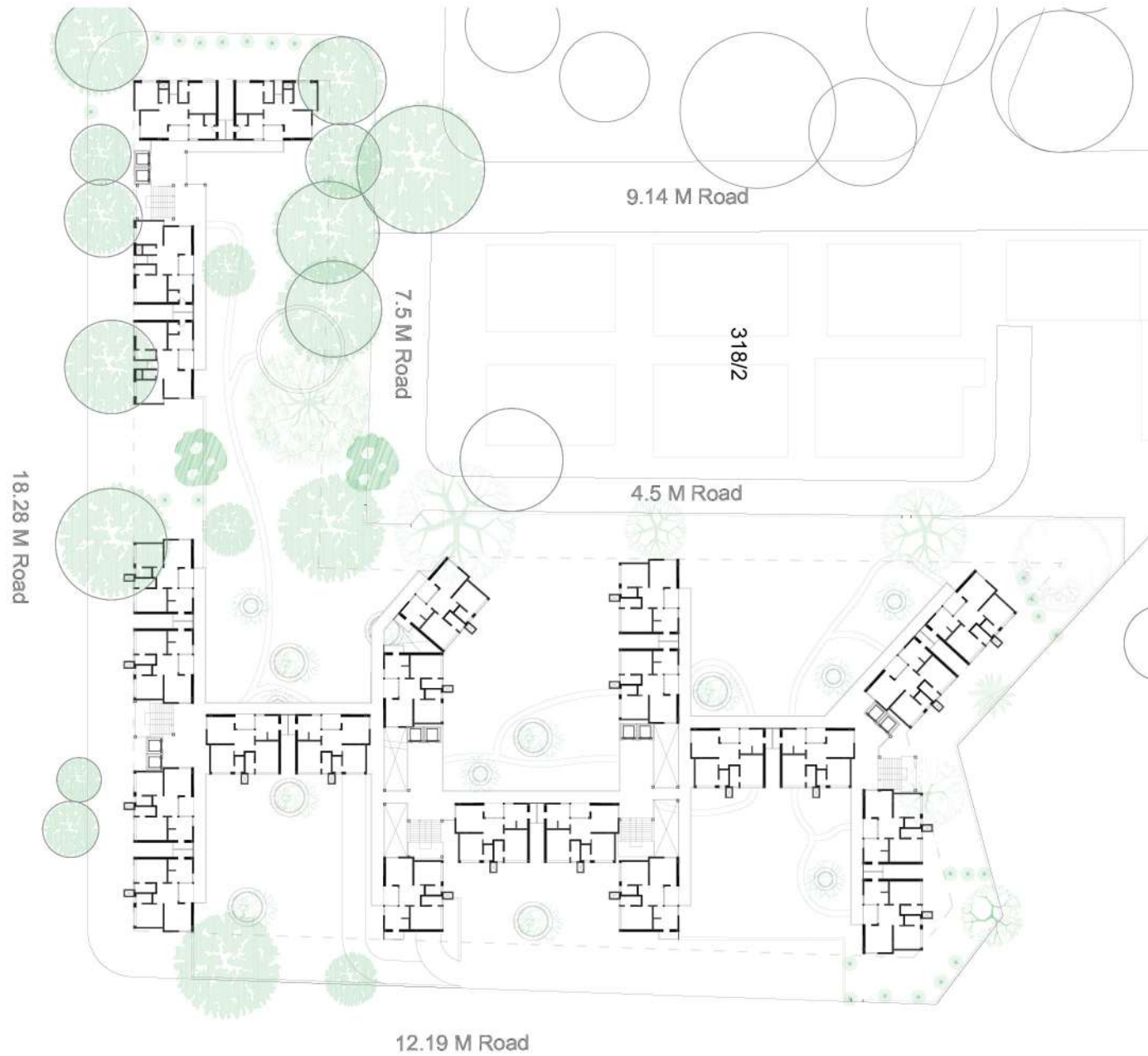
VIEW F - Looking from the verandah onto the terrace



The unit is tilted to adjust leaving the permissible margin as per regulations. It also allows opens the possibility of a longer view



The middle blocks creates a bridge between the two I shaped blocks.



The units are mirrored along the chokdi to create an interaction space between the two households.

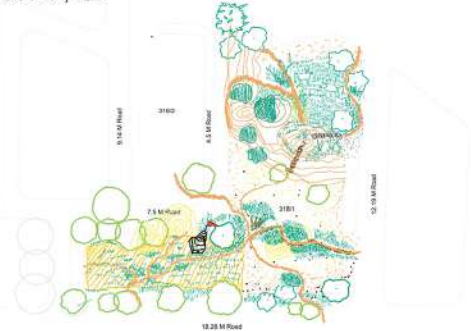


The space in the corners are widened to provide a view to the inner blocks.

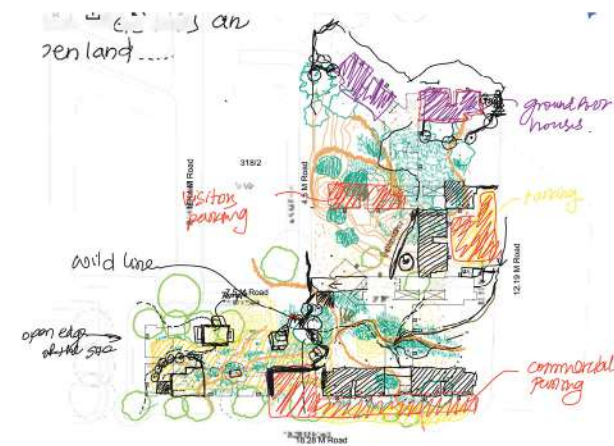


The feeling of the Ground

Once there was an open land.....

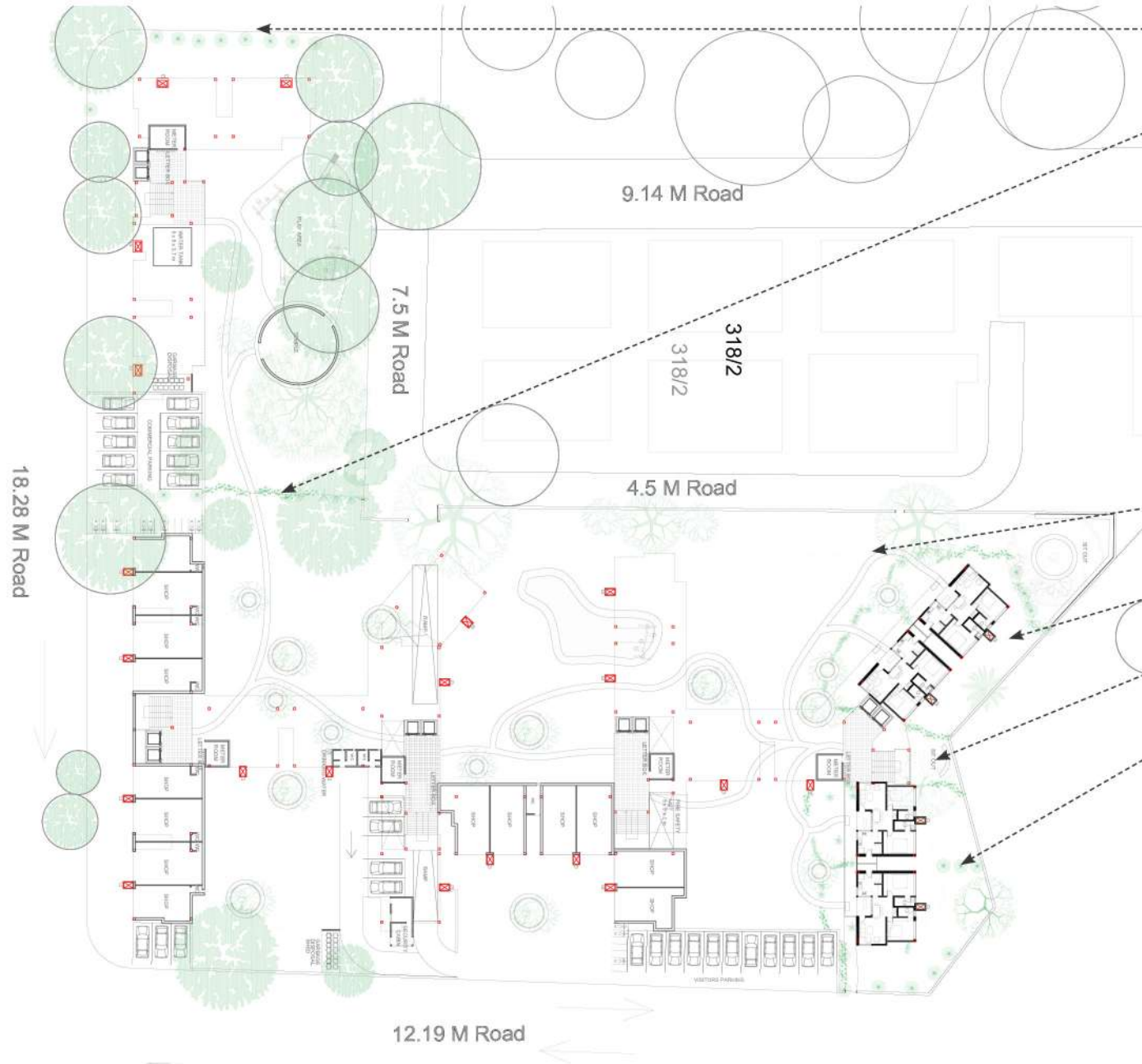


Imagining the ground as an open natural ground without any building.



Merging the natural ground and the amenities on ground.

GROUND FLOOR PLAN



Forming boundaries with asopalav trees on the edge of the site

Creating a natural bamboo curtain between the enclosed and the open part of the site.

Relocating the temple under the dense trees and opening it to the city.

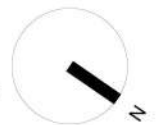
Retaining existing old trees on the South west part of the site

Pathways through the ground resembling pagdandi

Units on the ground with private garden area

Open sitouts in the corners under the tree canopy

Trees to mark the edges of the private garden



The Basement is concentrated in the northern part of the site to retain the existing trees on the southern part.

It accommodates **273 cars** and **473 two wheelers**.





