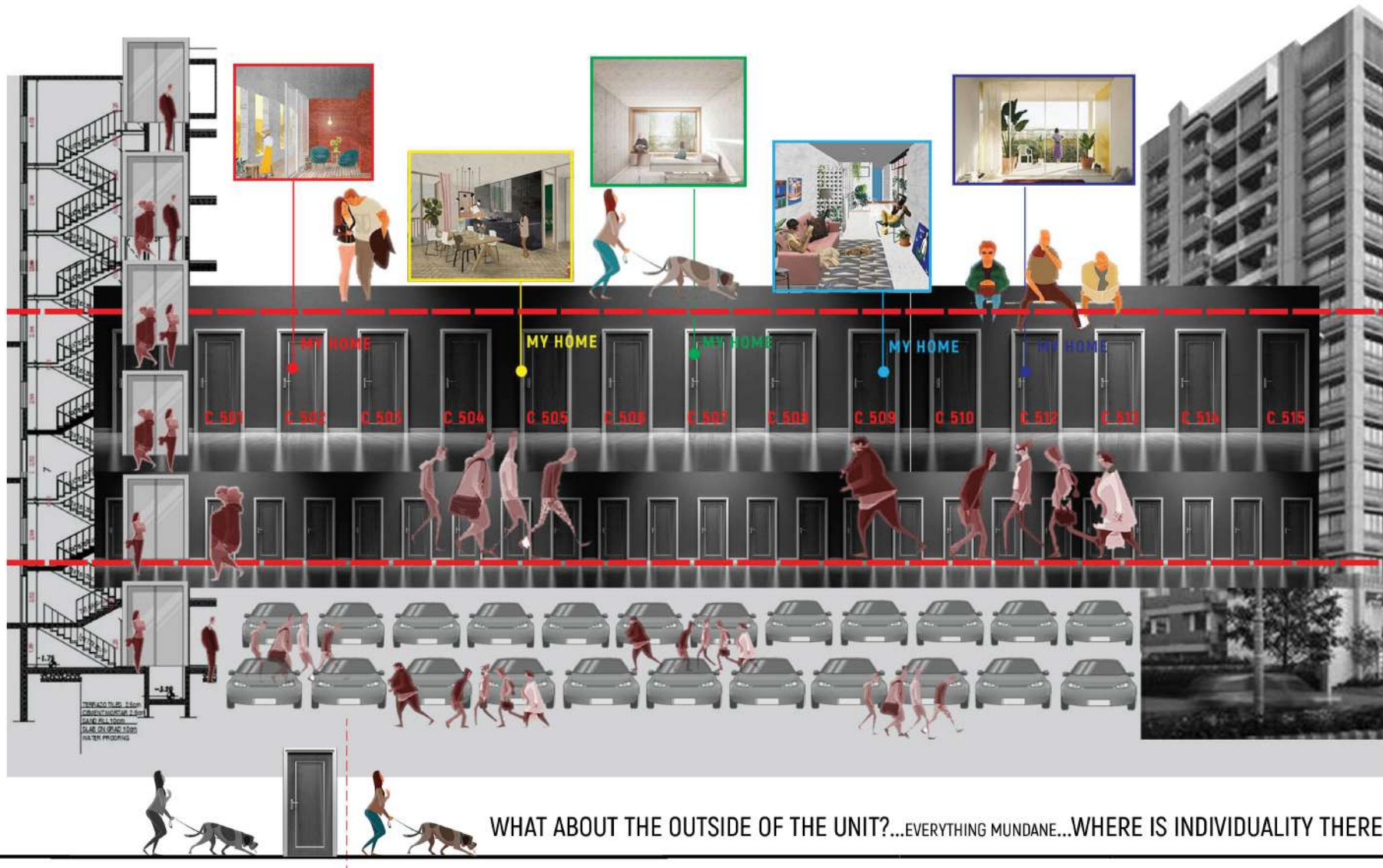




# PORTFOLIO

RUTVIK FALDU  
UA5917





Search for a word



# individuality

/ˌɪndɪvɪdʒiˈælɪti/

noun

1. the quality or character of a particular person or thing that distinguishes them from others of the same kind, especially when strongly marked.  
"clothes with real style and individuality"

Similar: uniqueness originality singularity particularity peculiarity

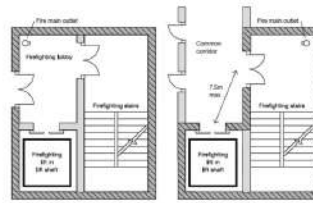
2. separate existence.  
"anything but individuality, anything but aloneness"

quality that distinguishes them from others of the same kind

uniqueness

stacking

today's high rise housing has lost the connection to the ground. Also, singular stacking limits the access of the terrace to upper floors only.



complete discard of staircase as a space

existence only due to fire regulations



Leo Pereria's own House

ELEMENTS IGNORED / NEGLECTED



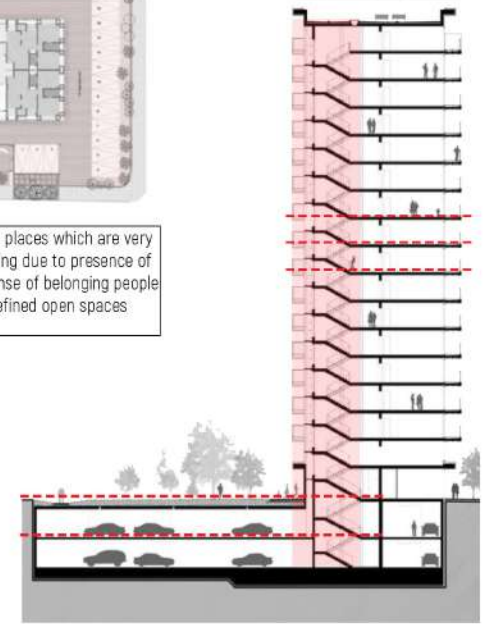
super efficient lobby spaces has taken away the sense of neighbourhood in the housing



lack of defined open spaces

the undefined open public places which are very likely to happen in housing due to presence of margin takes away the sense of belonging people feel in a bounded or defined open spaces

Even stacking of Leo Pereria's own House as a unit will feel monotonous and result in lack of Individuality if the elements which come into play due to the act of repetition are not thought in a different way!



mundane repetitive circulation

the act of going up and down through the lift to any floor, including basement takes away the chance encounters happening between people.

Search for a word



# monotonous

/məˈnɒt(ə)nəs/

adjective

dull, tedious, and **repetitious**; lacking in variety and interest.  
"the statistics that he quotes with monotonous regularity"

Similar: tedious boring dull uninteresting unexciting wearisome

- (of a sound or utterance) lacking in variation in tone or pitch.  
"her slurred monotonous speech"

Similar: toneless flat unvarying uninflected droning soporific

lacking in variety

repetitious

# Redefining the Experience

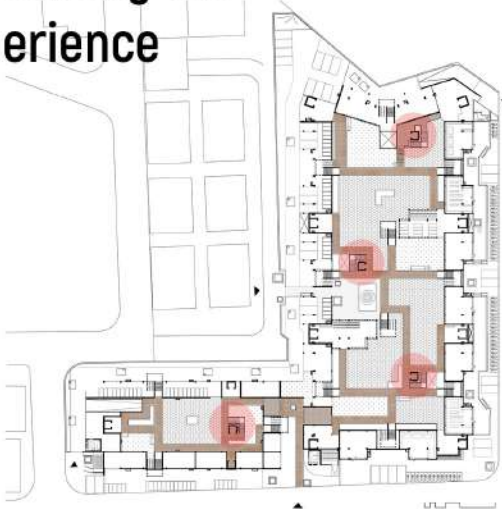


Diagram showing the meandering path all over the site connecting all the stairs and lifts and having meeting points (chowks) at every basement to ground connection junction. Also, all the entries (pedestrian or basement) culminate into the courtyards which further leads to individual blocks.



View of the ground floor from the staircase-lift of the basement and ground floor, showing the meandering pathway shaded by pergolas, going throughout the ground floor

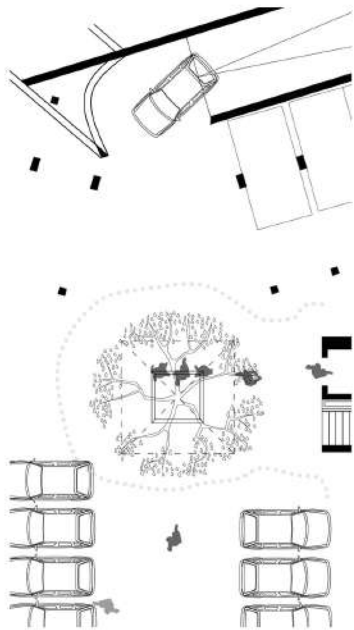


Landing of the staircase emphasized by jutting out the end part into the courtyard. Also, coloured entirely to distinguish it as an element

## LEGEND

- 1. Lobby
- 2. Lift
- 3. Staircase
- 4. Waiting Area
- 5. Commercial shops
- 6. Public Toilet
- 7. Visitors parking
- 8. Temple
- 9. Basement Outlet
- 10. Garbage Disposal
- 11. Meter Room
- 12. Letter Box
- 13. Garden
- 14. Paved Area
- 15. Security Cabin
- 16. Outdoor Sharing
- 17. UG tank
- 18. Fire safety Tank
- 19 Car Wash





Puncture accompanied by an ootla allows Light, Ventilation, Sense of Direction in the basement.

Residential Guest Commercial

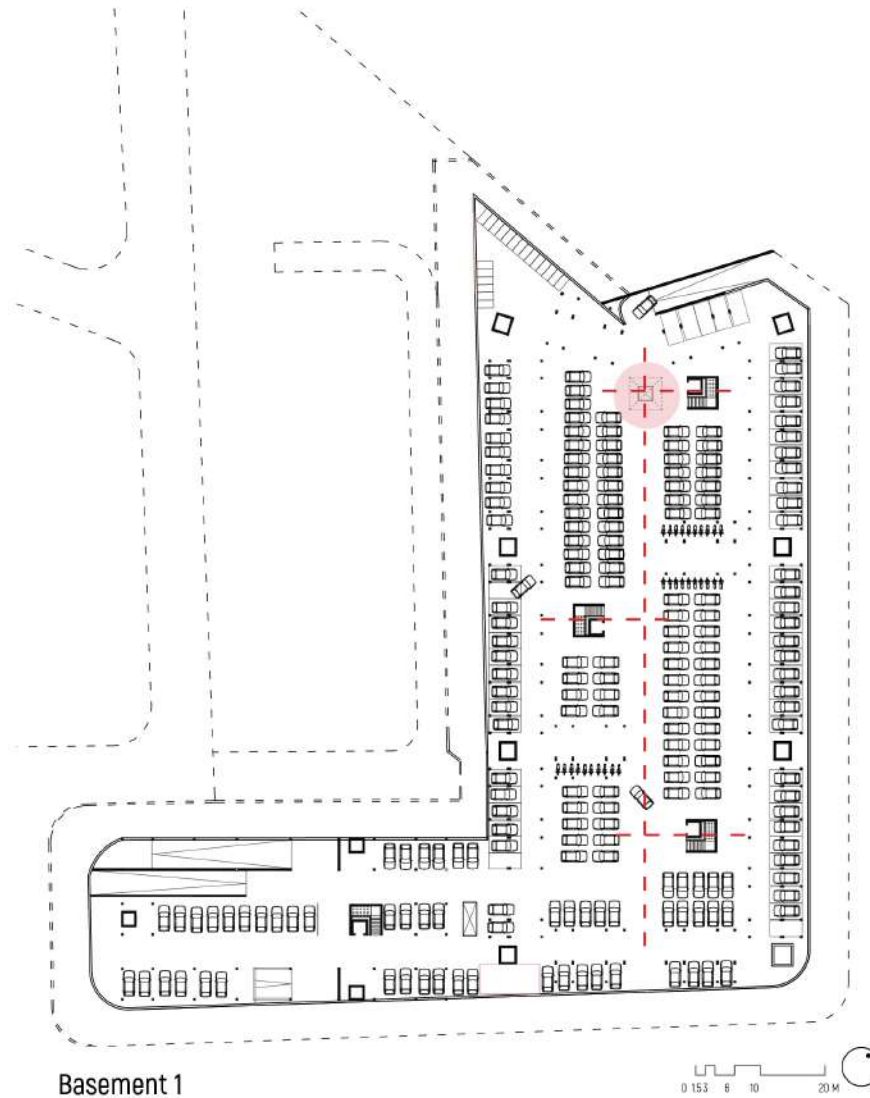


279

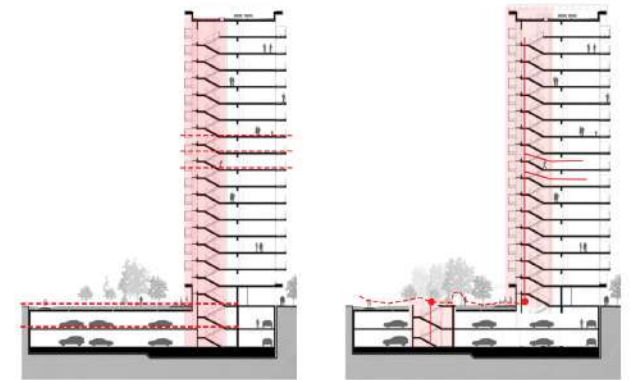
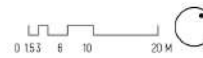
22

14

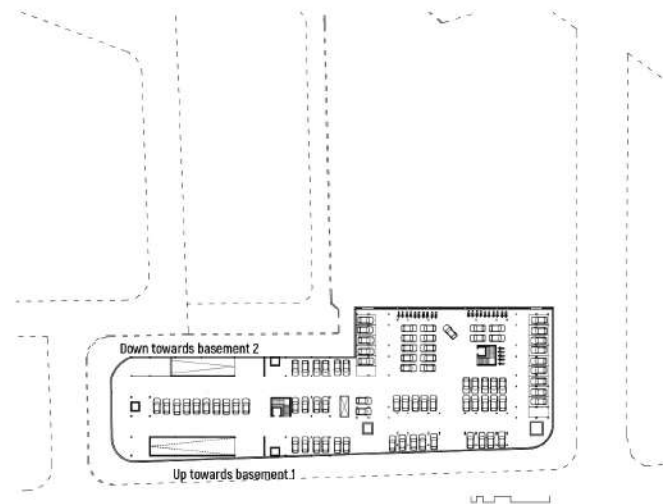
20 Cars 10 Cars



Basement 1

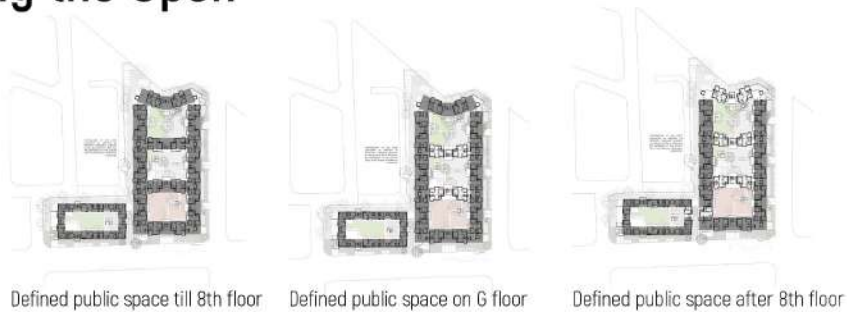


By ending the common lifts and staircase till the ground and connecting basement and ground with a new set of vertical circulation breaks the monotonous chain of movement from the unit to the basement and allow ground floor to act as a threshold between these repetitive circulation..

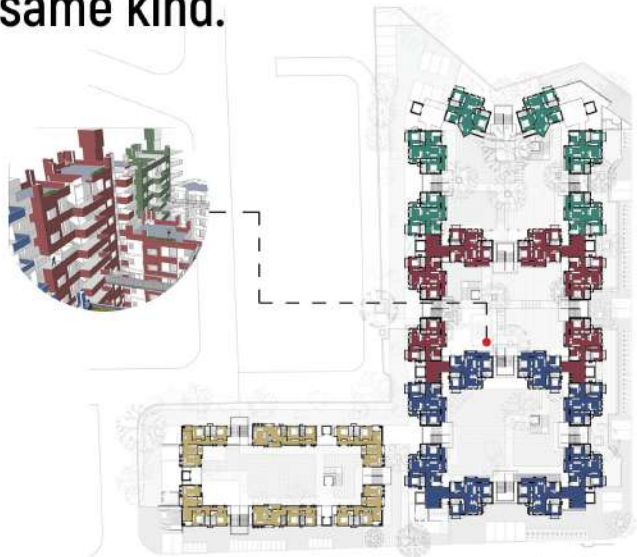


Basement 2

# Redefining the Open Spaces



## Distinguishing from the others of the same kind.



Courtyards named according to the colour of the units around it. This brings a uniqueness in every enclosing space created by the courtyards.



Unit A : Redevelopment Unit  
Builtup Area : 92.98 sqmt  
Rera Carpet Area: 75.3 sqmt



Unit B : Redevelopment Unit  
Builtup Area : 92.98 sqmt  
Rera Carpet Area: 75.3 sqmt



Unit C : Saleable Unit  
Builtup Area : 85.7 sqmt  
Rera Carpet Area: 70.82 sqmt



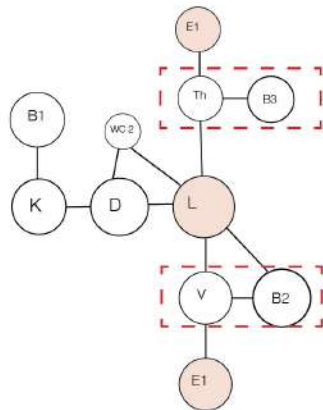
Unit D : Saleable Unit  
Builtup Area : 83.17 sqmt  
Rera Carpet Area: 66.45 sqmt

# What is home in a Unit?

Home = Storage of Memories

Home = Own space, Comfort

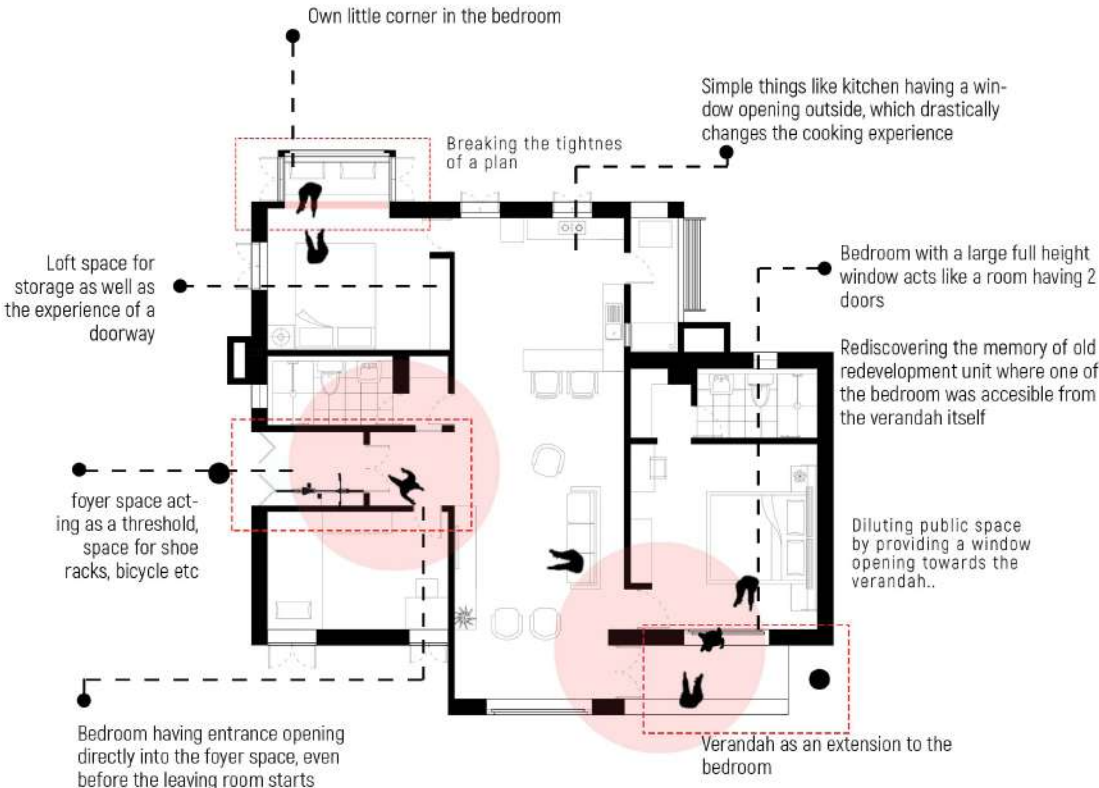
Home has a threshold



## Two Entrances to a unit

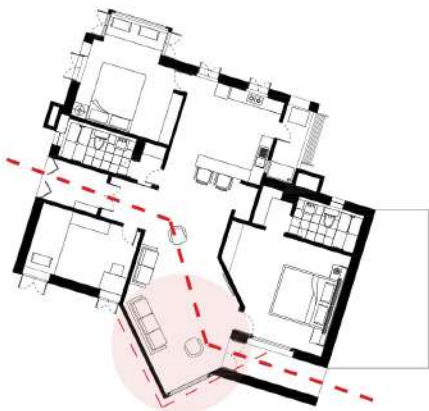
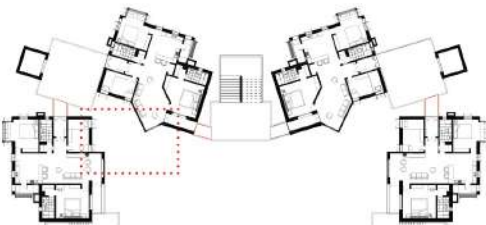
It is interesting to see here that how the plan organization has evolved itself by redefining the idea of a threshold and position of living room in an indian house.

Both the entrance has a threshold/foyer/verandah where a room of the house opens up, even before reaching the living room. Completely changes the hierarchy of a house



Two entrances to a house allows to have two different set of neighbours. Imagine grandparents waiting for their grandchildren to come from school but there will be element of surprise of not knowing who might enter from which door

## The Exception



View from the lift lobby shared by 3 units.



# What is home in a Unit?

What happens when 2 doors to a room?

Heart of the house?

Circulation an important and neglected factor in unit design.

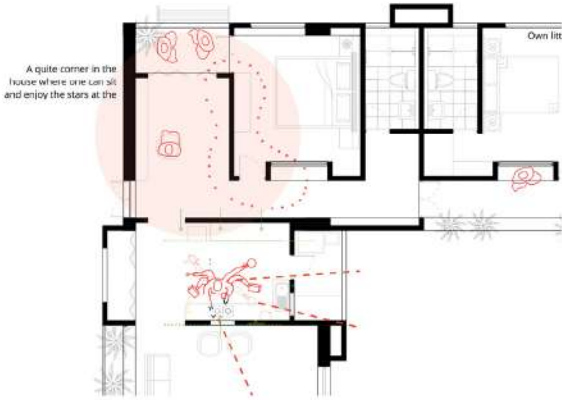
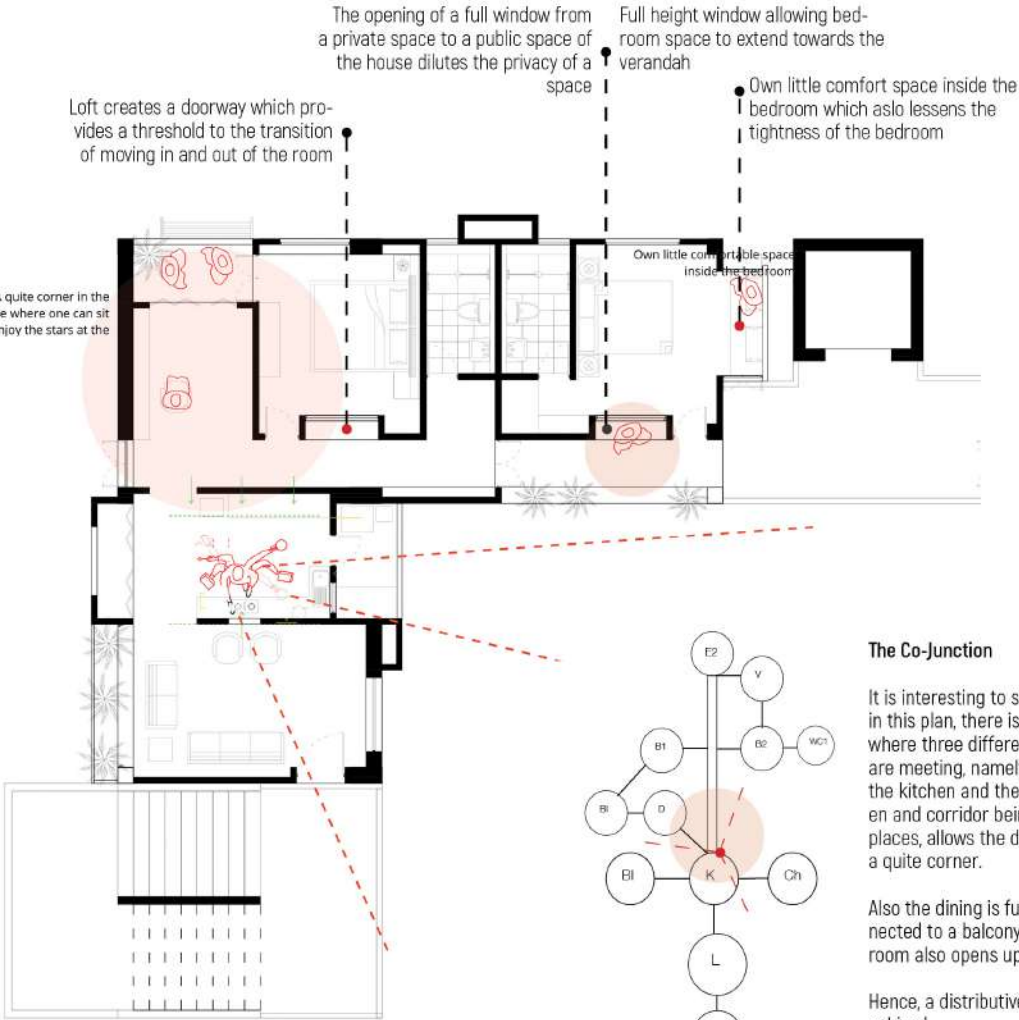
Whats the face of your house?



The L configuration allows the house to look upon itself.



Just by blocking two shorter sides at the entry, the units opens up on all sides, allowing it to be inward as well as outward looking unit



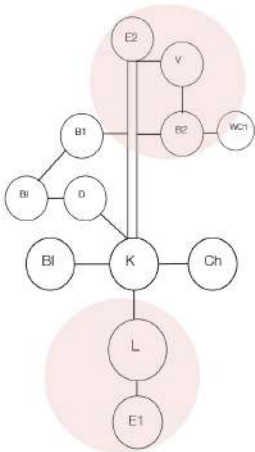
Ring of Circulation in a house allows more fluidity in a plan. It is possible by allow same space to open into multiple different functions.

## The Co-Junction

It is interesting to see that here in this plan, there is a junction where three different functions are meeting, namely, the corridor, the kitchen and the dining. Kitchen and corridor being two busy places, allows the dining to form a quite corner.

Also the dining is further connected to a balcony where a bedroom also opens up.

Hence, a distributive hierarchy is achieved.



## The two Worlds in a House

The presence of two entrance to unit changes the definition of home into a house.

The plan diagram of a typical housing unit plan always has living room at the entrance and rest followed by it and hence becomes the controlling space of the home.

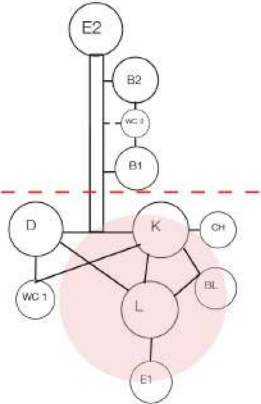
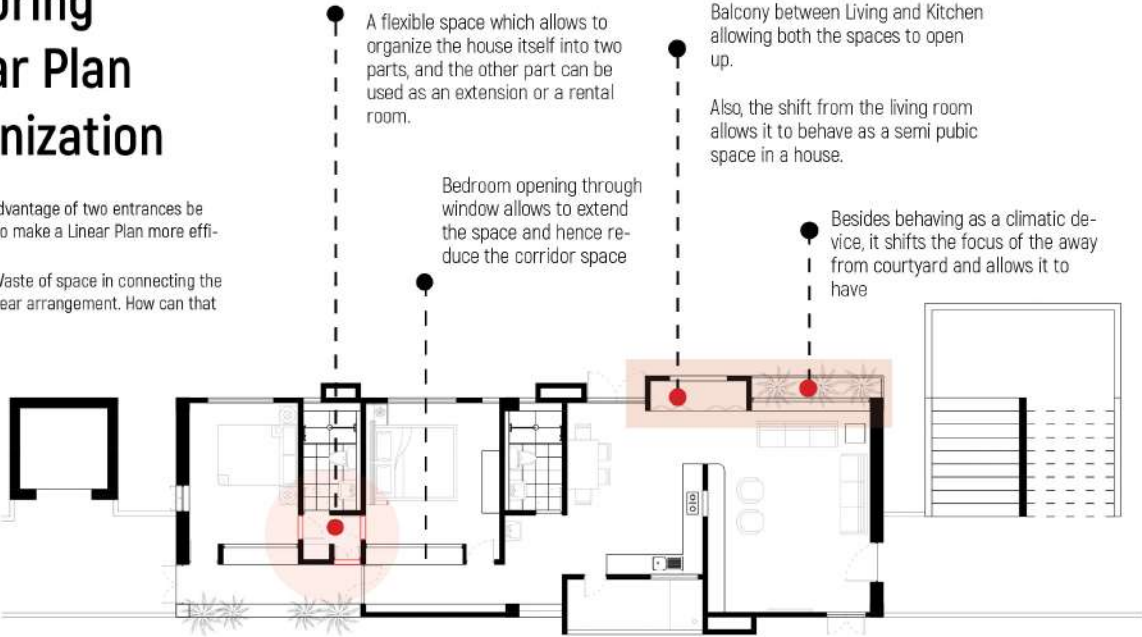
Here also the entrance opens up into a living room but is no longer required to access the rest of the house.



# Exploring Linear Plan Organization

How can the advantage of two entrances be used in order to make a Linear Plan more efficient?

Linear Plan = Waste of space in connecting the functions in linear arrangement. How can that be changes?



Unit 3 being more longitudinal will require more corridor space to allow the **linear arrangement** of the functions.

referring to the plan syntax diagram, the **corridor space is reduced to half** by allowing a direct relation between living, kitchen and dining.

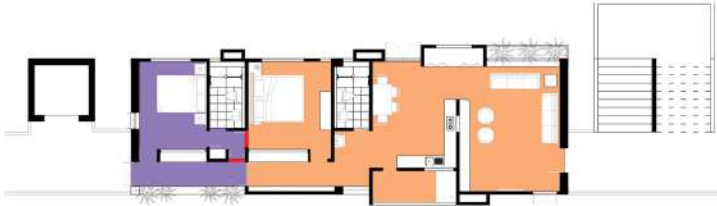
These relations are further enhanced by addition of balcony between kitchen and living to allow a **threshold** between a public and private space of the home



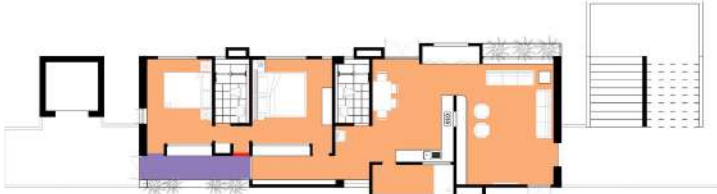
Linear arrangement allows to open up the both the sides making unit inward as well as outward looking.



Kitchen openings are designed to allow visual connection in every direction.



A rental room



A shared bathroom between two rooms.



Used as an attached bathroom for the room belonging to the main house

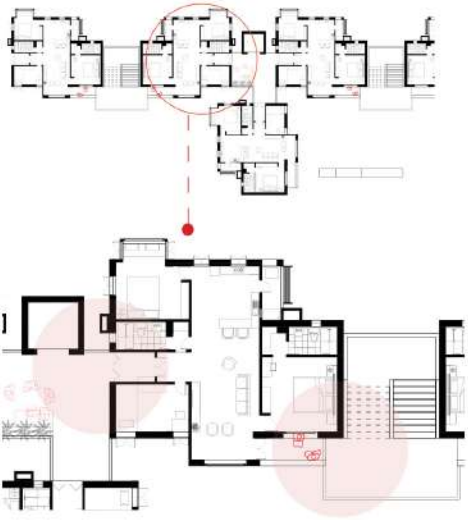


A common bathroom with an office extension

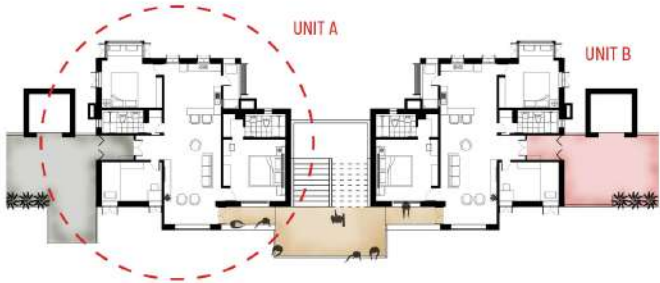
# How does the Unit achieves Individuality at the entire scheme level? (horizontally)

Rethinking the use of elements like circulation core and cluster organization to allow variationn while repeting the units itself.

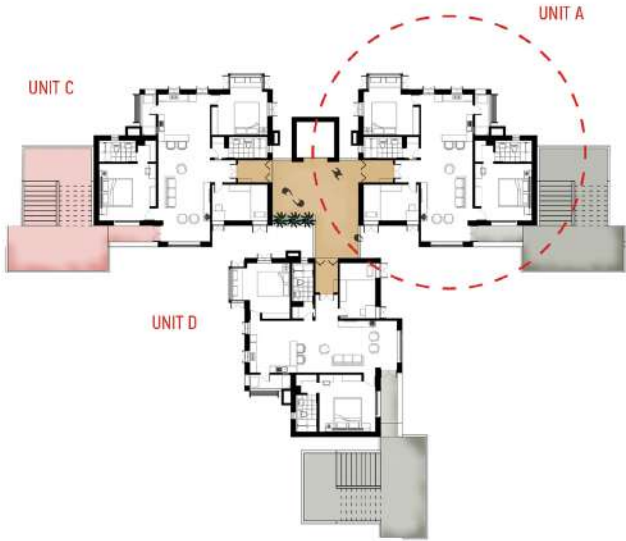
In what ways can same unit be repeated while breaking the monotony?



Each Unit has 2 entrances | Both singular vertical circulation core.



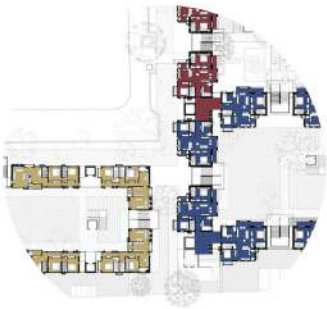
Cluster 1 : Cluster formed by sharing a common staircase lobby



Cluster 2 : Cluster formed by sharing a common lift lobby

Hence, 2 entrances results in **two different sets of neighbours**

Each courtyard from above has different set of experiences of the ground floor. Like courtyards with the temple or with the huge banyan tree or where always children play cricket



All the units face into different courtyards, which are known by thier colour

Hence, no neighbours of Cluster 2 share same courtyards and so they will be of **different unit colour**





# How does the Unit achieves Individuality at the entire scheme level? (vertically)

Breaking the mundane repetitive chain of vertical circulation through the lift.

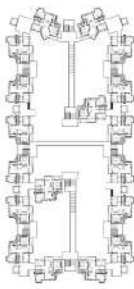
Allowing the use of staircase, which is a dead space in todays apartment housing.

Stepped Terracing from G+14 to G+11 and intermediate terracing at G+8 level.

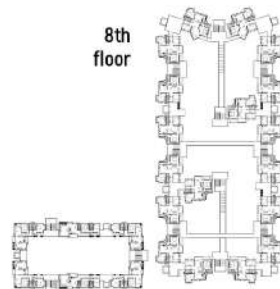
Every floor from G+14 to G+9 has access to terrace by just climbing 3 flights of stairs.

Same experience retained for lower floors by statergically connecting 5 bridges connecting staircases to terraces

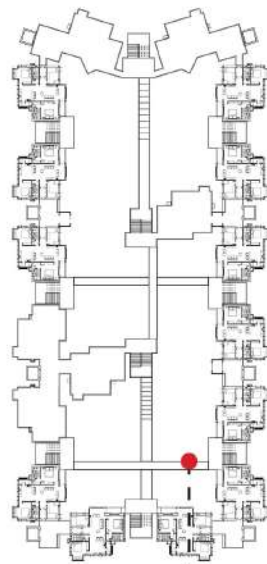
7th floor



8th floor



9th floor



The bridging starts from G+7 and continues till G+9. The specific junction of floors was particularly chosen keeping in mind..

1. The terracing starts from G+9 for 3 blocks and hence to allow most connections to happen, it should be done before that.
2. Main aim was to provide every unit with an access to certain individual terrace and to let the old residents of the redevelopment project retain the walkup experience.





# The terraces, colours and bridges.

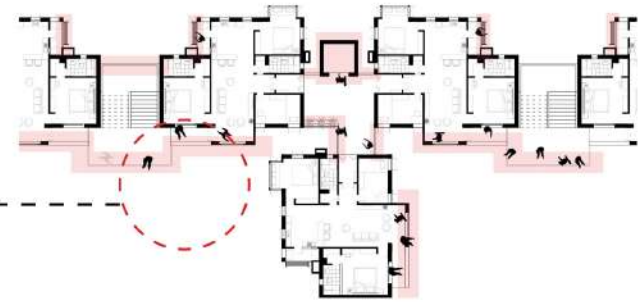
Bringing back the experience of using Staircase in an housing

The joy of getting access to land near your floor

The lift core on the terrace are designed to add to the monolithic nature of the project. This is done by extending the non structural part of the space for OHT tanks.

The bridges are designed using a light steel structure with metal grates to allow the porosity into the courtyard.

The bridges are strategically connected to terraces or the floors below and above in order to allow ease of access of staircase and land (terrace) for every of the design.



Verandahs and the extension of the house into the lobby area is marked with different Colours for different Courtyards.

These also acts as a weather shading device for the front part of the house.

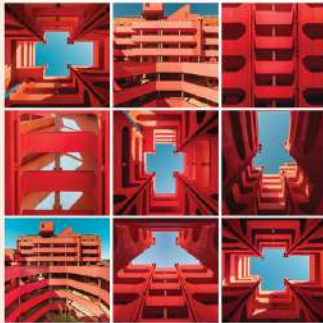
## ACT OF GROUPING TO BRING IN INDIVIDUALITY

- Unit A has 2 different set of neighbours due to 2 different entrances. Hence part of **2 different blocks**.
- Unit A shares a **common court** and hence a **common unit colour** with different group of units.
- Unit A shares a **common terrace** with other set of units.
- The **path/experience of using bridges** and staircases aligns with another set of units having similar floor conditions.



Section showing the use of colour, connection of bridges and stepped terracing incorporated into the project





scan the qr code to know your shortest distance from the ground floor checkpoint/terminal you came out from the basement.



*Thankyou !*

Rutvik Faldu,

G-303, Shanti Apartments, 150ft ring road, Naranpura, 380059.

House in red, overlooking the courtyard with temple and Approached through fire exit - Just below the floor connecting the green bridge sharing the terrace with the blue block. Approached through lift - Lobby shared with green and blue another red block.

Active member of: Green Terrace Rangers | Temple Courtyard Team | Belongs to Mid terrace-bridge union

*PS: Maintainance shared with green and red block hence bills to be reached out to the necessary mailbox.*

**Shanti Apartments**  
*Celebrating Individuality*