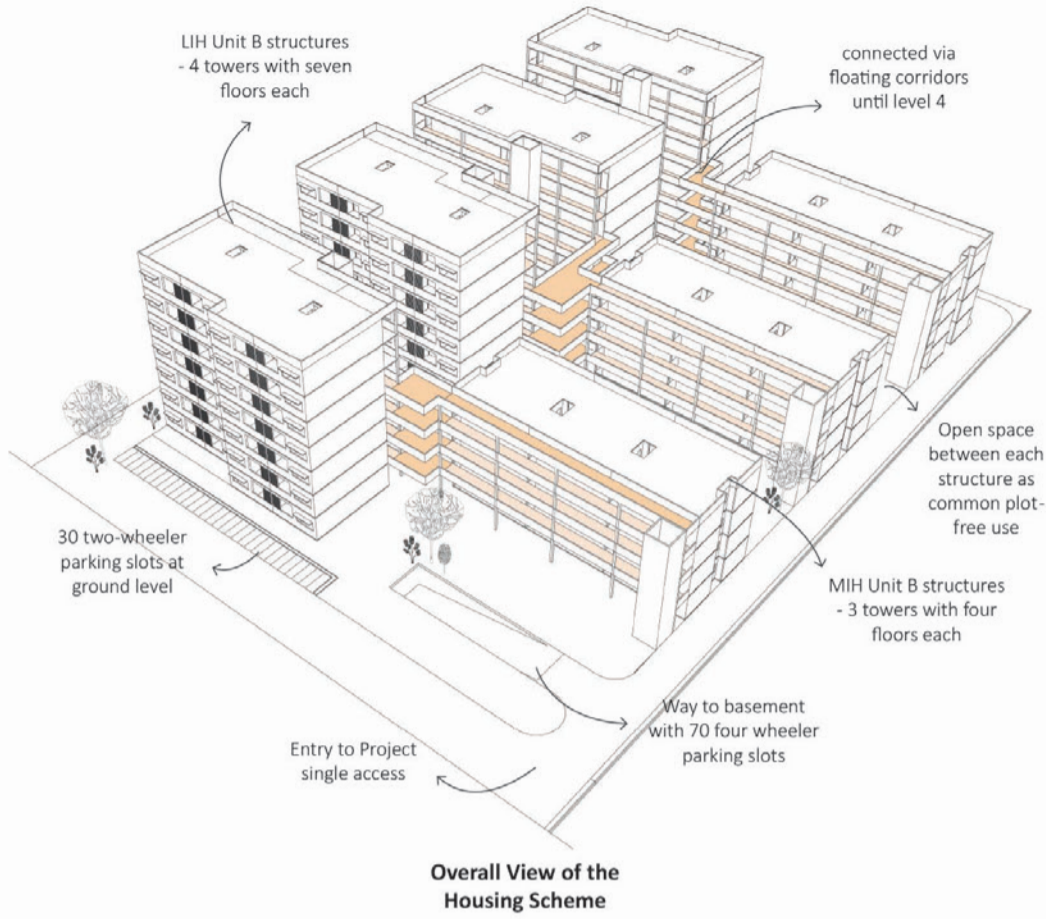


TIME PROBLEM 1 | 28.07.20



Housing at Naroda Patiya

Unit A 112 Units LIH 60 sq m carpet area of each
Unit B 42 Units MIH 90 sq m carpet area of each

Total Plot Area 5850 sq m
Common Plot 585 sq m min. **Actual given** 1980 sq m
Dimensions of each Module 10 by 3 m
FSI 1.8
BCR 45% 2632.5 sq m
Total Buildable Area 10530 sq m
Parking 70 units of four wheeler + 30 units of two wheeler

Total Carpet Area 10,225.6 sq m
Built up Area 10,500 sq m
Super Built up Area 11,809.32 sq m

