





<https://www.imdb.com/title/tt0172684/>

*"Hum Jeete Hai ek baar,  
Ek baar marte hai,  
Shaadi bhi ek baar hoti hai (eh not sure)  
Aur **ghar** ?*

Most of us buy houses as our one time investment.  
It's considered one of the biggest achievements in one's life, to have your own roof.

What do you consider when you go to buy a house ?

"Oh! I also need a separate room for my mother in my house, but I can't afford so many Bedrooms maybe the kids can share the room"

How many BHKs?

"Is there enough storage?"

Can we afford this house?

"dad I need a gaming room in my house!"

"I have two kids so maybe I need to buy two bedroom hall kitchen"

"Binod wants to go to another city to study, so in 3 years his room will be empty maybe we can convert it into my studio then"

"We will adjust we can shift the furniture here"

"I want a separate room I don't want to share"

These are some of the aspects there are many more that people consider before buying a house like the location and amenities etc



Bedroom used as a painters studio

*Photo credit : Aadya baani*



Living room used as a boutique

*Photo credit : Soor patel*

"Does your house afford to pursue your passions"



A light well used as a bird room

*Photo credit : Aditya patel*



The parapet of terrace used to sit and smoke

*Photo credit : Aadya Baoni*

"Does your house afford to fullfill your permanant or temporary cravings?"

Ghar ma parvadta

*What can your house afford ?*

# Affordances



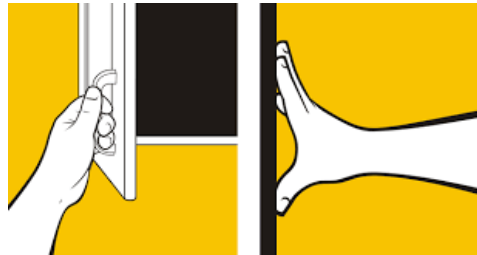
Source : <https://uxdesign.cc/affordance-in-user-interface-design-3b4b0b361143>

According to Gibson affordances are refined and textured by articulating the concrete and specific features of the living world that “constraint” or “afford” behaviours, which then leads to modulation and changes in both organisms and environment in a complimentary manner.

Does the house shape us or do we shape the house ?

# Types of Affordances

## Performative affordances



*Images by Jamesbin via Shutterstock.*

Affordances are properties of objects which show users the actions they can take. Users should be able to perceive affordances without having to consider how to use the items.

## Generative affordances



*Source - drawing made by Hrushikesh and Madhav*

Non specific and open ended designs lead to generative affordances.

A shared code of conduct emerges among the users or a user and they perceive the design in their own way.



# Performative Affordances in our Apartments



Photo credit : Abhishek patel



Photo credit : Tarjane soni



Photo credit : Rikin Patel



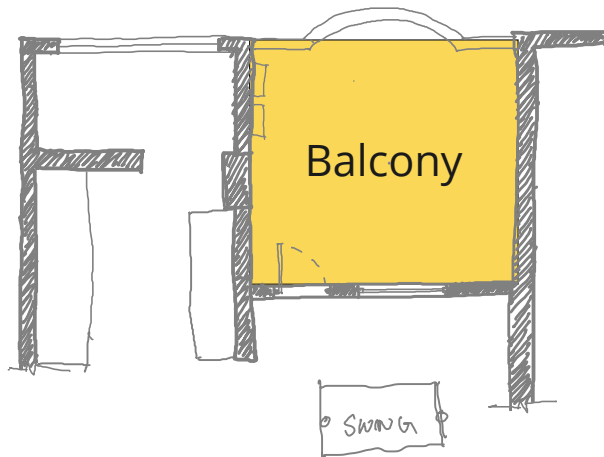
Photo credit : Khushi



Photo credit : Vishwa patel

A lot of balconies in apartments are changed into rooms or are combined with other rooms to make spaces for different uses.

## Balcony < bedroom

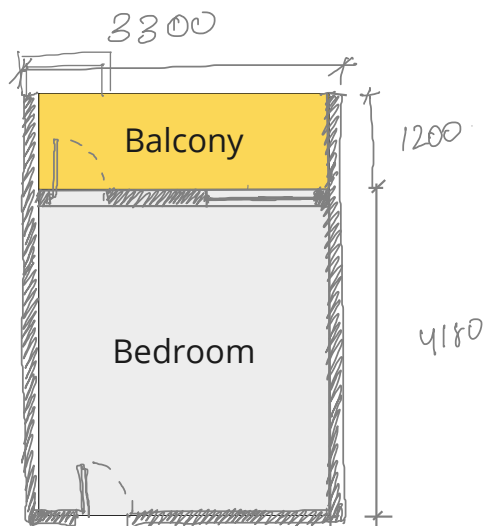


There is a Geyser, gas pipeline and meter unit in the balcony! Where will they go if we convert this into a room?

Walls have started gaining moisture as the facade isn't protected

OH! this circular wall is an issue! We aren't able to find windows that will fit!

## Balcony + Bedroom = living room

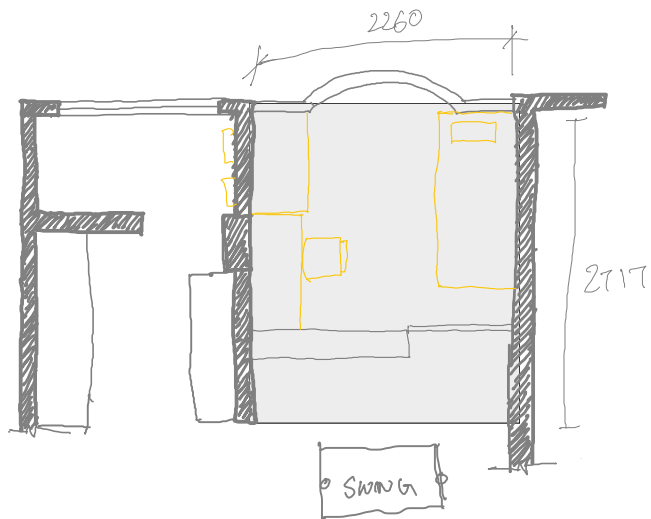


The wall is under a beam, can we still break it?

There is a drop in the balcony! uff

Questions that arised to the user before making the modifications

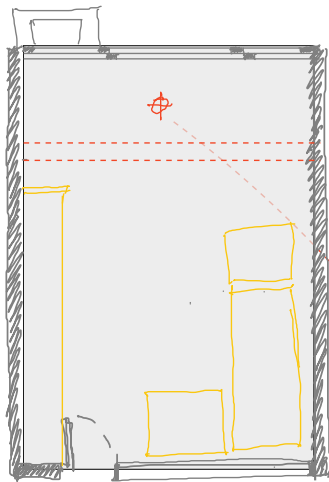




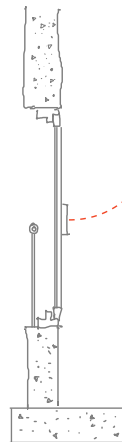
Partition became storage for room

The dimension of the balcony was perfect for the bed and table to fit ! however didn't have enough space for storage

The gas pipeline and geyser meter was shifted to the kitchen chokdi



Light point can be used for fitting fan



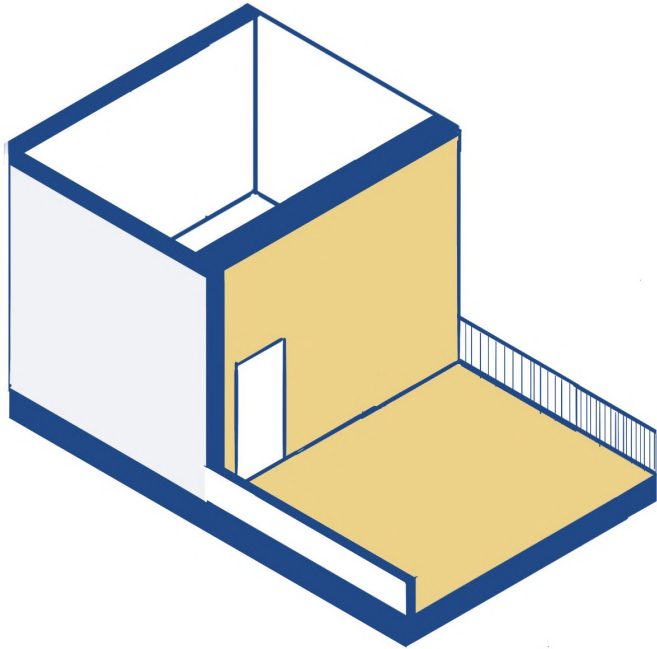
Parapet and railing

The parapet allowed Windows to fit easily!

The railing towards the outer edge didn't affect the window fitting hence we didn't remove it!

Things that helped the users while making the modifications.

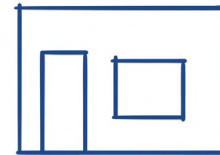
# Details of balcony



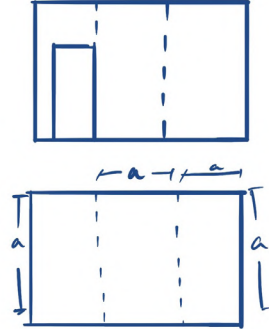
Can we build with such details kept in mind, for the users to easily grasp and make the modifications later?



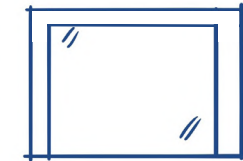
- Made of a different material than rest of the walls
- Making a wall of ply wood, or a cheaper material.



- What all do we consider when you have to make a window which has to be reused.



Can we make the wall as if it fits like a puzzle piece?



- There is no sil and a through opening ?



# Generative Affordances



Living room used for kathas  
Photo credit : Nishita talatiya



A part was converted into a garage  
Photo credit : Geeta panchal



Corridor converted into computer room  
Photo credit : Aahana Banker



Converted into a boutique  
Photo credit : Soor Patel



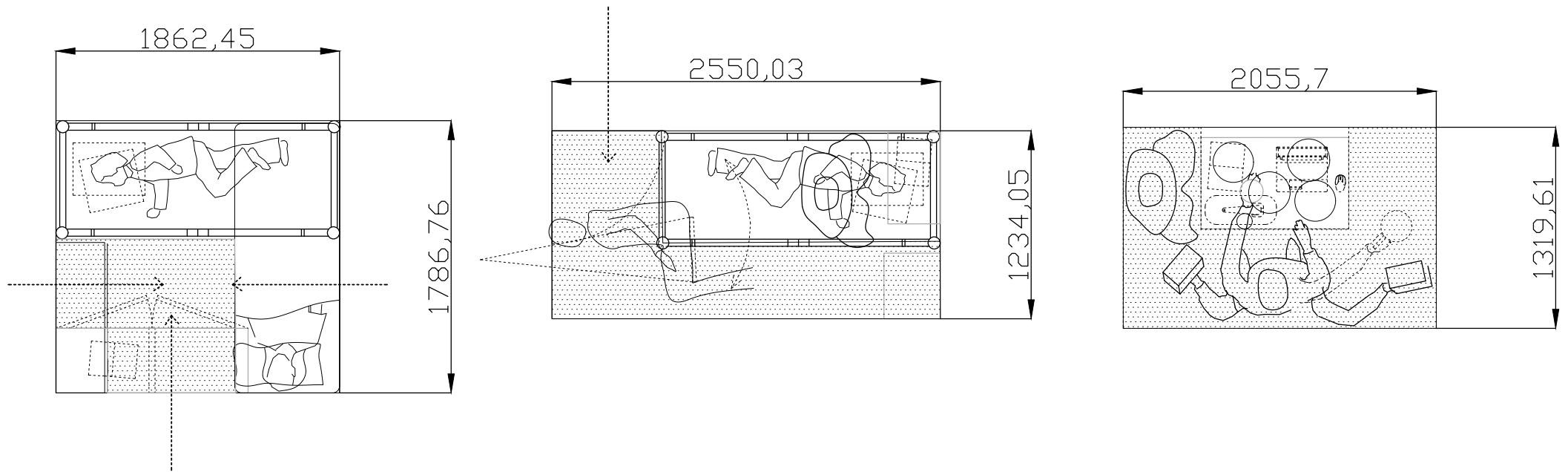
Daily converted as a place to dine  
Photo credit : Nishita talatiya



Backyard converted into printing press  
Photo credit : Aadya Baoni

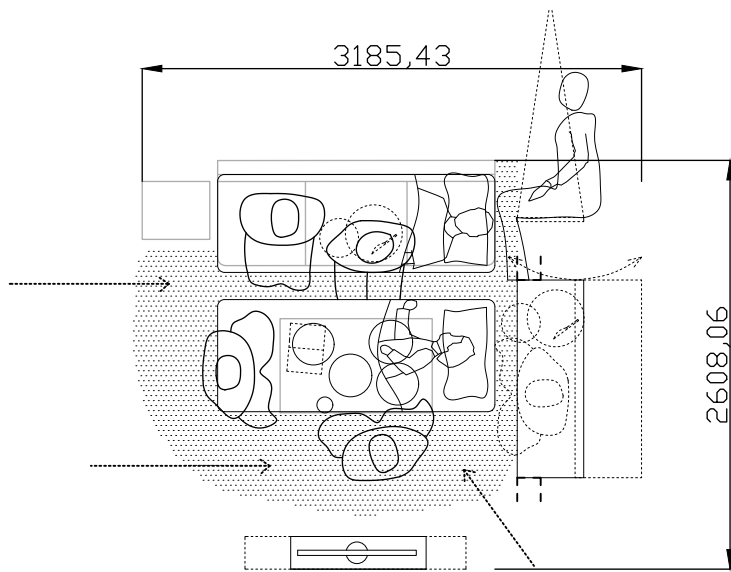
Generative affordances can be seen our living rooms and our varendahs, backyards and terraces

# Through spaces

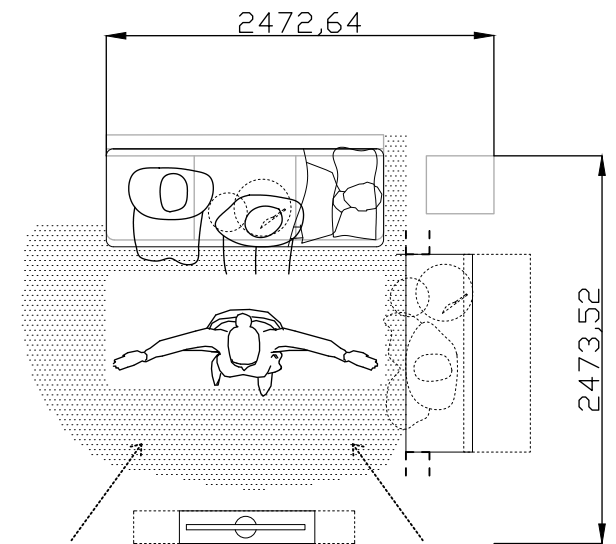
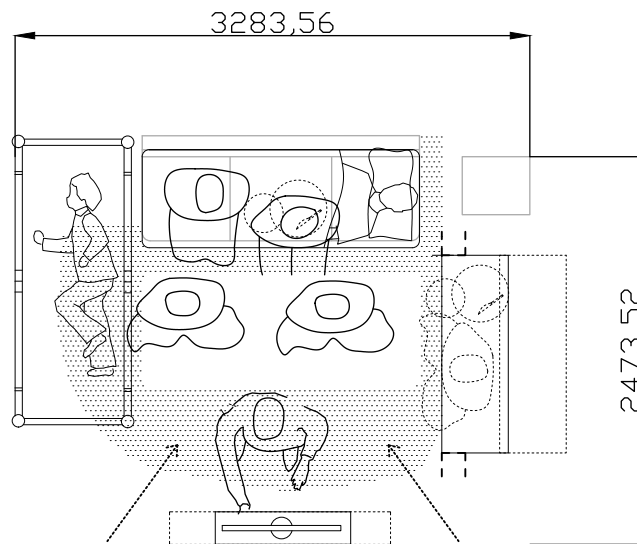


Minimum dimension for general activities in a Balcony

Can we keep few behaviours in mind before designing balconies?

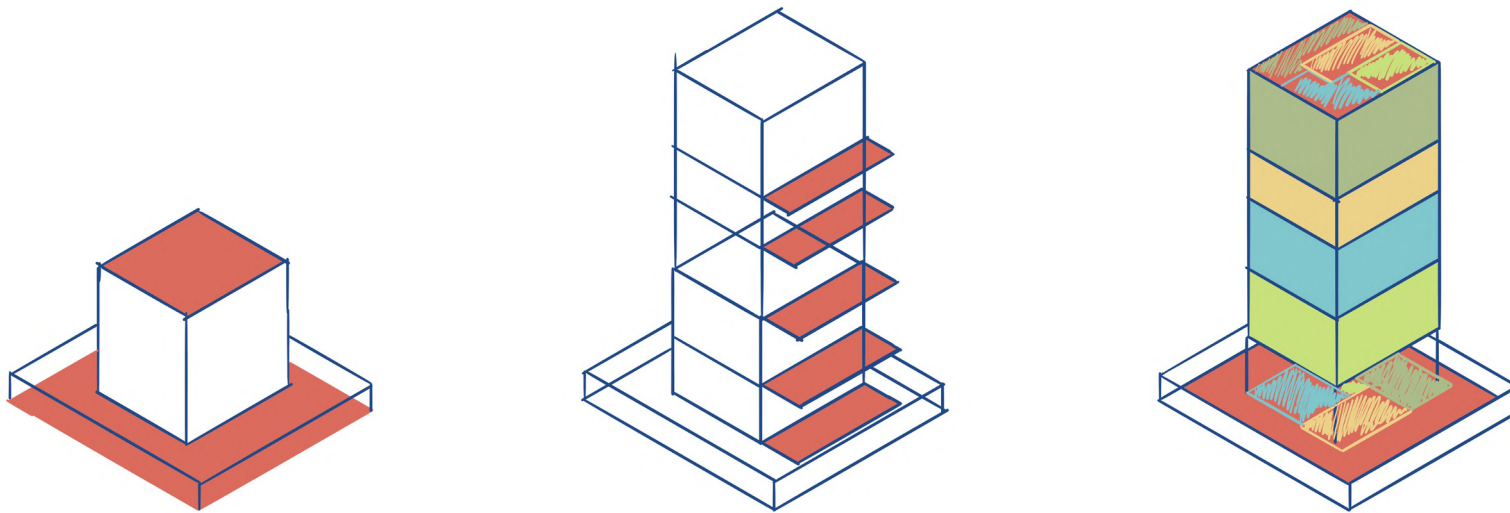


<https://pointland.wixsite.com/furniture-templates>



Minimum dimension for general activities in a living room

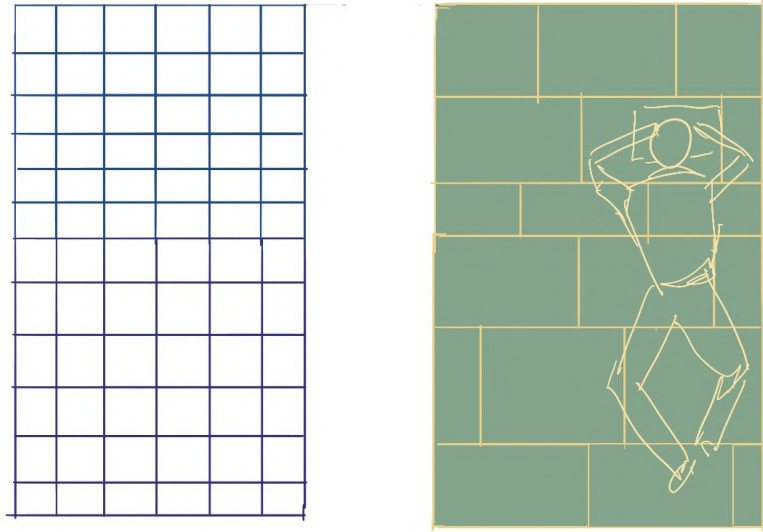
Can we keep few behaviours in mind before designing living rooms?



Margins, verandahs, backyards and terraces become ambiguous spaces in a house on ground however in an apartment we hardly get such spaces. Can we sell the apartments in parts, where you get your own piece of land, few rooms on the 5th floor and a piece of the terrace ?



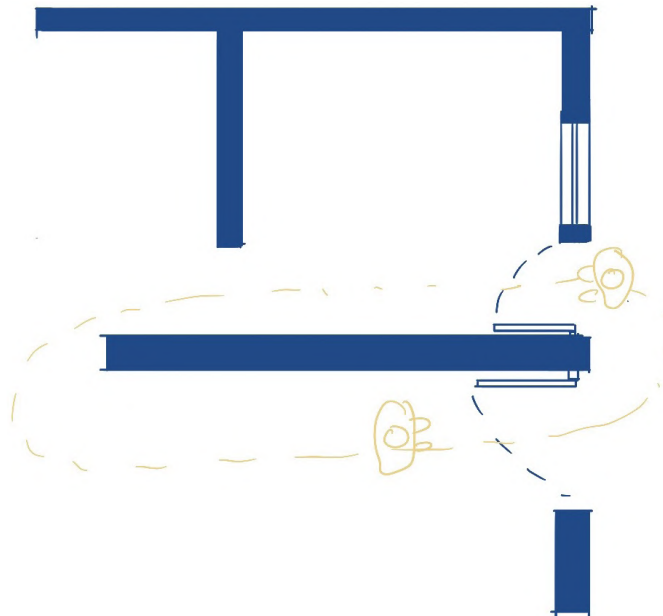
# Through Details



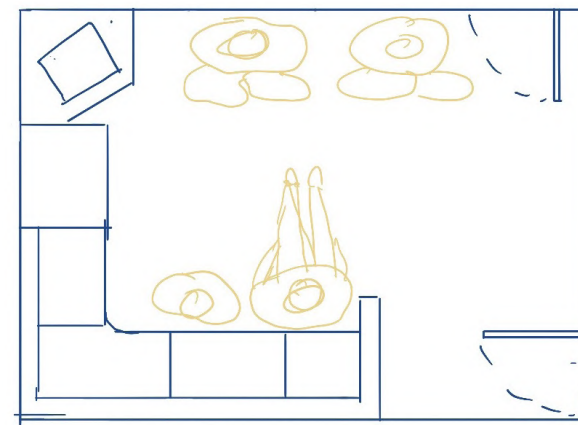
Certain behaviour can also be generated through smaller details

What are details that we shall keep in mind while designing to generate behaviours?

Kota stone flooring is cool in summers and hence people are tempted to sleep

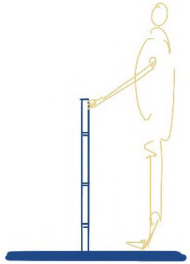


Two entrance doors became a playground for the kids



Back support on all four sides and allows people to sit on the floor without getting tired

# Through Details



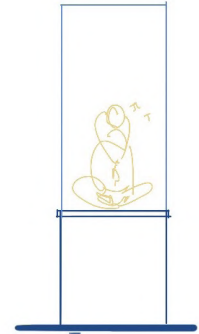
A railing used as a support to stand.  
Depending on the weather it's not favorable to  
even touch a metal railing



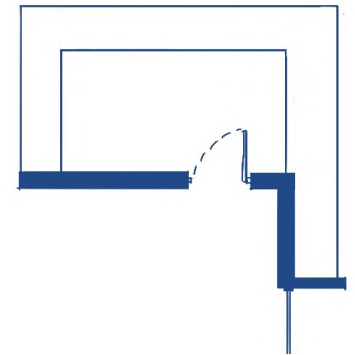
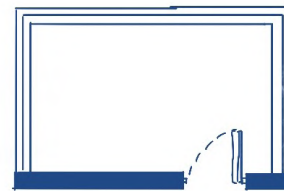
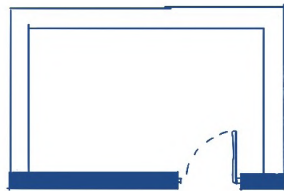
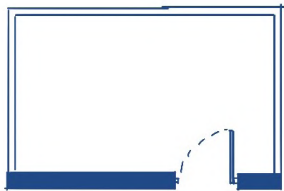
Where as a parapet can be used to lean on and  
have your morning coffee



A tilted parapet support to allow you to lean and  
read a novel



A thicker parapet probably with a back support  
would afford the activity of someone sitting and  
listening to music

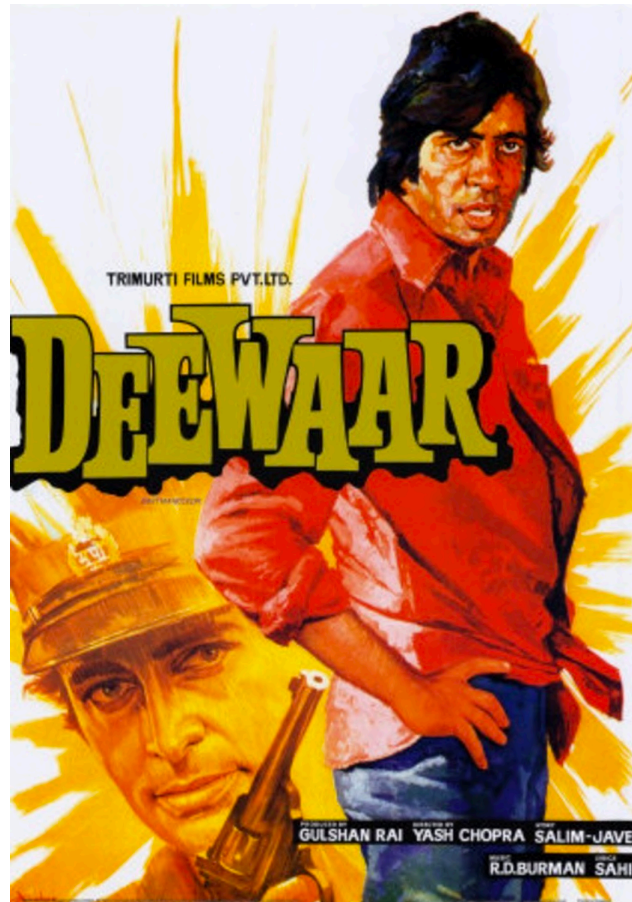


Certain behaviours can also be generated through smaller details



[https://www.itsnicethat.com/articles/daniel-clarke?utm\\_source=twitter&utm\\_medium=social&utm\\_campaign=intsocial](https://www.itsnicethat.com/articles/daniel-clarke?utm_source=twitter&utm_medium=social&utm_campaign=intsocial)

It's not possible to know who binod is when it comes to mass housing, but we can think about designing spaces with higher affordance to help users modify their environments and vice versa.



<https://www.amazon.in/PRINTELLIGENT-Paper-Bollywood-Deewar-Poster/dp/B01BKD6T5U>

*“ Mere Pass Bedroom hai, kitchen hai, hall hai  
tumhare pass kya hai?  
Mere pass Affordance hai!”*