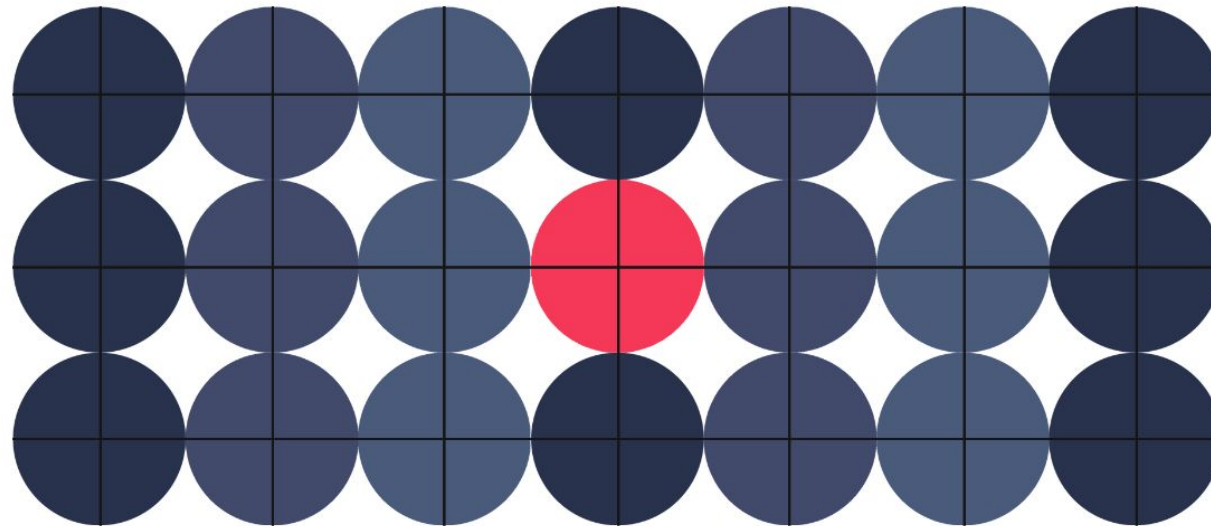


# BETWEEN MONOTONOUS TYPICALITY AND STYLISTIC INCOHERENCE

DESIGNING FOR SPECIFICITIES WITH CONTEXTUAL COHERENCE



FACULTY : PROF. VISHWANATH KASHIKAR

MONSOON SEMESTER 2022  
LEVEL 3 STUDIO

# UNDERSTANDING MONOTONY

THE GLOBAL EXTERIOR OF BUILDINGS





















# HOUSING TODAY

## INDIA

































WHAT IS TYPICALITY?





ADEQUACY

ACCEPTABILITY

ROUTINE

SUFFICIENCY

CONTINUITY

MONOTONOUS  
TYPICALITY

USUALNESS

REPETITIVE

SIMILARITY

PREDICTABILITY



The second world war striked with newer technological advancement aiming for the large scale destruction



The bomber aircraft and missiles led to the destruction of cities with millions of life with it

Large number of the population became homeless and the extreme cold climate of Europe made it even difficult.

The stacking or the repetition of plans became the immediate solution to the ease of construction



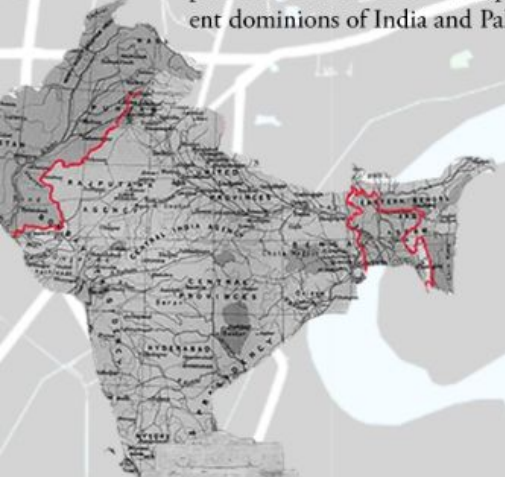
Need for a large scale housing came about that is easier and faster in terms of construction arose

# HOW DID THE MONOTONY IN HOUSING COME ABOUT?



# MONOTONY IN INDIA

1. The Indian Independence Act partitions India into two independent dominions of India and Pakistan.



2.1 The future wagered on a West-oriented internationalism of outlook. The state invested in mega infrastructure projects which were called the "Temples of modernity".



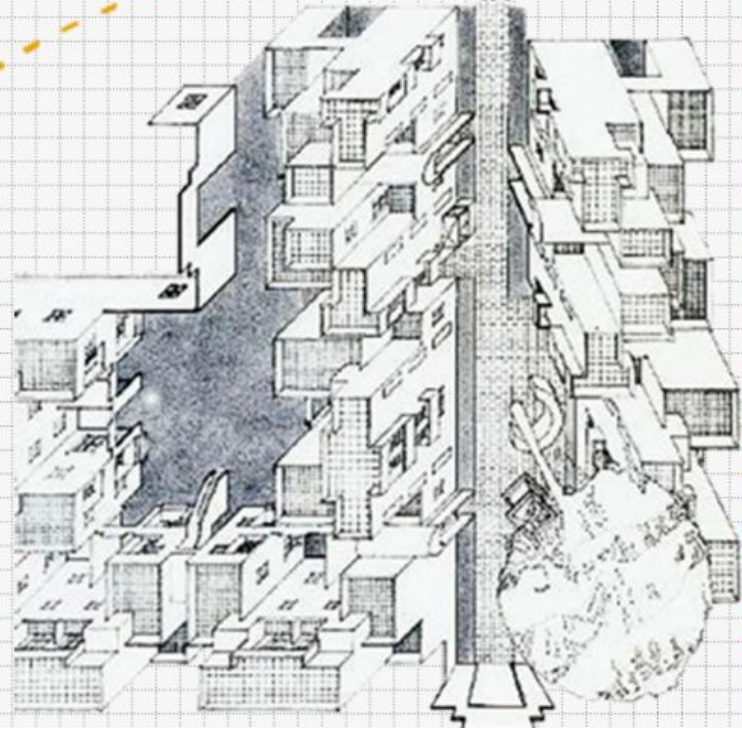
2.2 The partition of India sparked one of the greatest mass migrations in modern history.



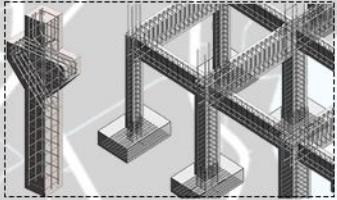
3. Squatter colonies sprang up in every Indian metropolis



4. Housing had to be delivered urgently, as a response to the large scale migration after the partition.







5. The technological advancement and the **exploration of new materials like steel and RCC** made the construction of vertical apartments easier.

This became a long term solution to the hikes in land value also.



7. Liberalisation of Indian Economy was put forth by Dr. Manmohan Singh, who was the then finance minister under Congress government headed by PV Narasimha Rao.



Affects on Housing:

Shift in Government Role:

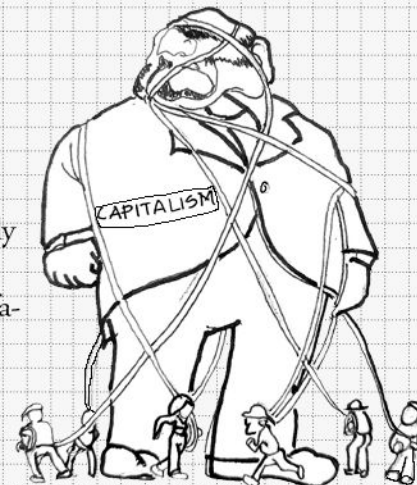
Housing Provider → Facilitator to motivate private sector in housing

9. The concepts of designing housing was limited to the profitability, ease of production and regulations



6. Downfall of the state-led mixed Economy

8. While the private sector slowly intensifies production, the state lays out a plethora of policies to facilitate production







# REGULATIONS & MONOTONY

MEZZANINE FLOOR

HABITABLE ROOM  
DIMENSION

BUILDING HEIGHT &  
DOUBLE HEIGHT

**REGULATIONS**

VENTILATION  
SHAFT

MARGINS

INTERNAL OPEN  
TO SKY SPACES

COMMON  
SPACES





# REGULATIONS & MONOTONY

MEZZANINE FLOOR

HABITABLE ROOM  
DIMENSION

BUILDING HEIGHT &  
DOUBLE HEIGHT

VENTILATION  
SHAFT

REGULATIONS

MARGINS

INTERNAL OPEN  
TO SKY SPACES

COMMON  
SPACES



# EXAMPLE: Height + Double Height + Area



JUST THE PLASTERING AND SHUTTERING OF THIS IS GONNA COST ME A FORTUNE

PEOPLE DON'T PAY EXTRA MONEY FOR SUCH THINGS

WILL IT UTILIZE THE FSI AREA FULLY WITHIN THE HEIGHT RESTRICTION?

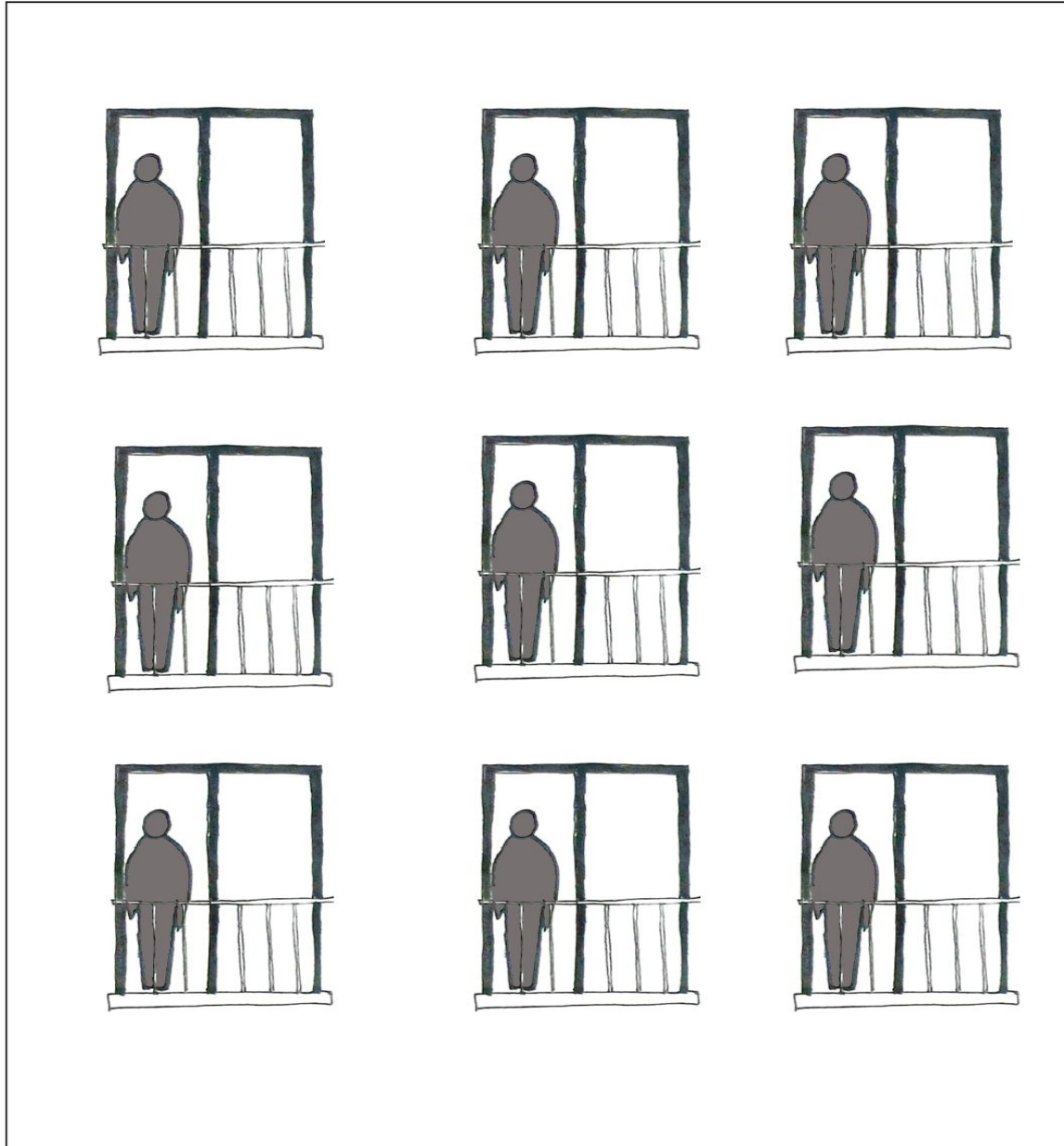
WOULDN'T THE OVERALL NUMBER OF UNIT BE LESS



DEVELOPER



# WHY IS THERE A NEED TO BREAK AWAY FROM MONOTONY?



- NEED FOR INDIVIDUALITY
- CREATES BOREDOM AND LESS EVOCATIVE SPACE
- NOT RESPONDING TO CONTEXT, CLIMATE



HOW DID ARCHITECTS TACKLE MONOTONY?

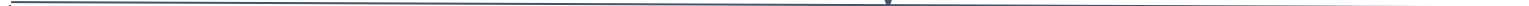




MONOTONOUS TYPICALITY



FROM OUTSIDE



FACADE  
TREATMENT

CIRCULATION

FLOOR PLATES &  
MASSING

FORM



EXPERIENCE

VARIATION IN  
PROGRAMS

RESPONSE TO CLIMATE

COLOUR    PROJECTION    SIZE OF  
OPENING





MONOTONOUS TYPICALITY



FROM OUTSIDE



FACADE  
TREATMENT



COLOUR



PROJECTION



SIZE OF  
OPENING



# MIRADOR / MVRDV











MONOTONOUS TYPICALITY



FROM OUTSIDE



CIRCULATION



EXPERIENCE



**LA MURALLA ROJA / RICARDO BOFILL**



















MONOTONOUS TYPICALITY



FROM OUTSIDE



FLOOR PLATES &  
MASSING



VARIATION IN  
PROGRAMS



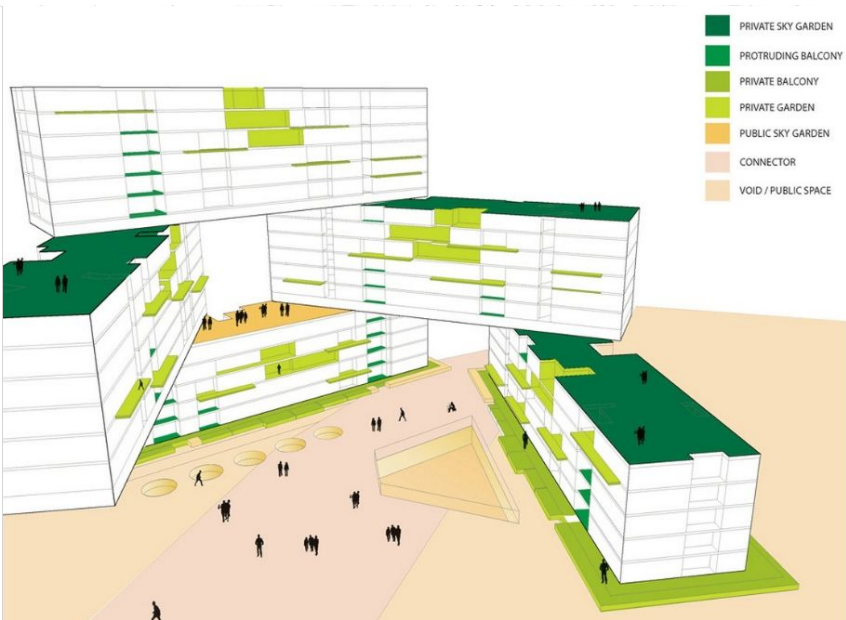
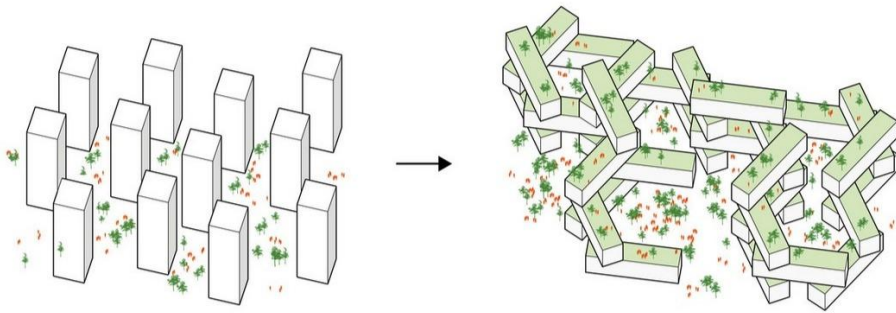


# THE INTERLACE / OMA

Architects: OMA, Ole Scheeren

Area : 169600 m2

Year : 2013







MONOTONOUS TYPICALITY



FROM OUTSIDE



FORM



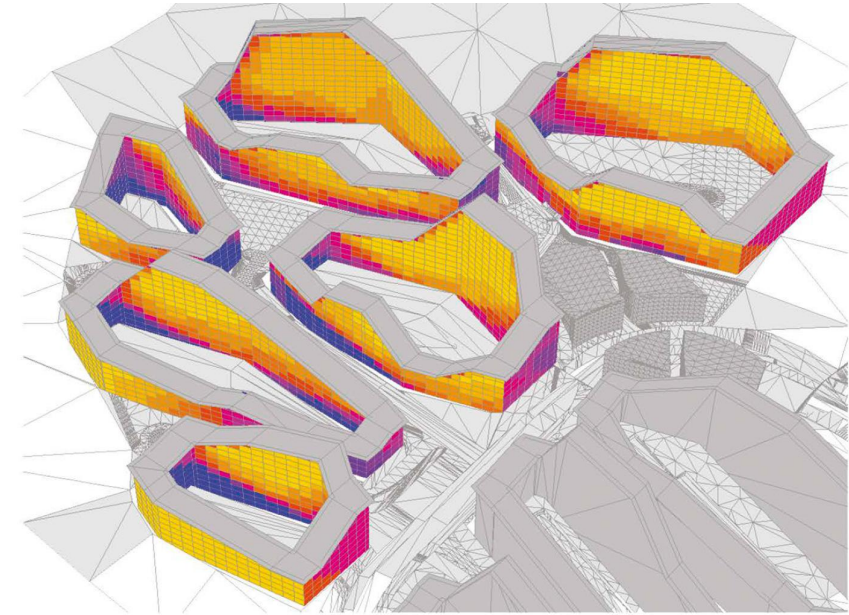
RESPONSE TO CLIMATE



# TOWER BLOCK HYBRID / FRITZ VAN DONGEN



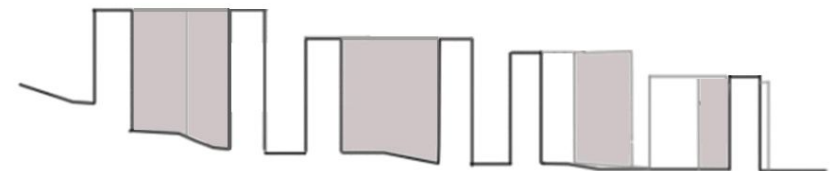
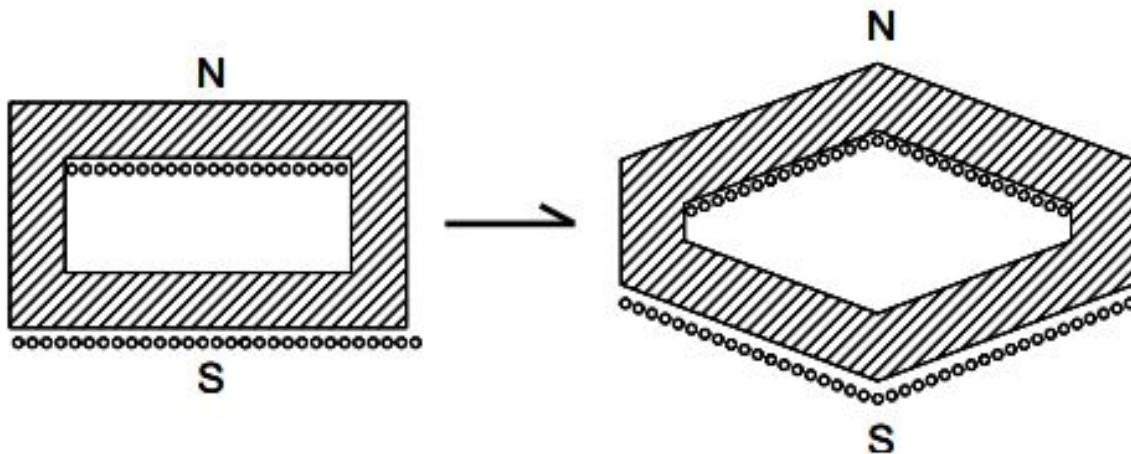
The form is developed according to the Climatic conditions of Seoul maximizing the façade on the south to get the winter heat.



sun potential [h/d]



> 12 11 10 9 8 7 6 5 4 3 2 1 0





STYLISTIC INCOHERENCE







IS DIVERSITY THE ANSWER TO BREAK MONOTONY?

WHAT IS THE MIDDLE GROUND BETWEEN MONOTONY AND DIVERSITY?

HOW DO THESE BUILDINGS RESPOND ON AN URBAN SCALE? HOW DO WE CREATE A LANGUAGE THAT IS FOLLOWED THROUGHOUT THE BUILDINGS TO BRING IN COHERENCE AND THAT DOESN'T LEAD TO MONOTONY? IS THERE A NEED FOR SUCH STYLISTIC COHERENCE?

AT A LARGER SCALE, SHOULD WE BE CONCERNED WITH REGIONALISM?

