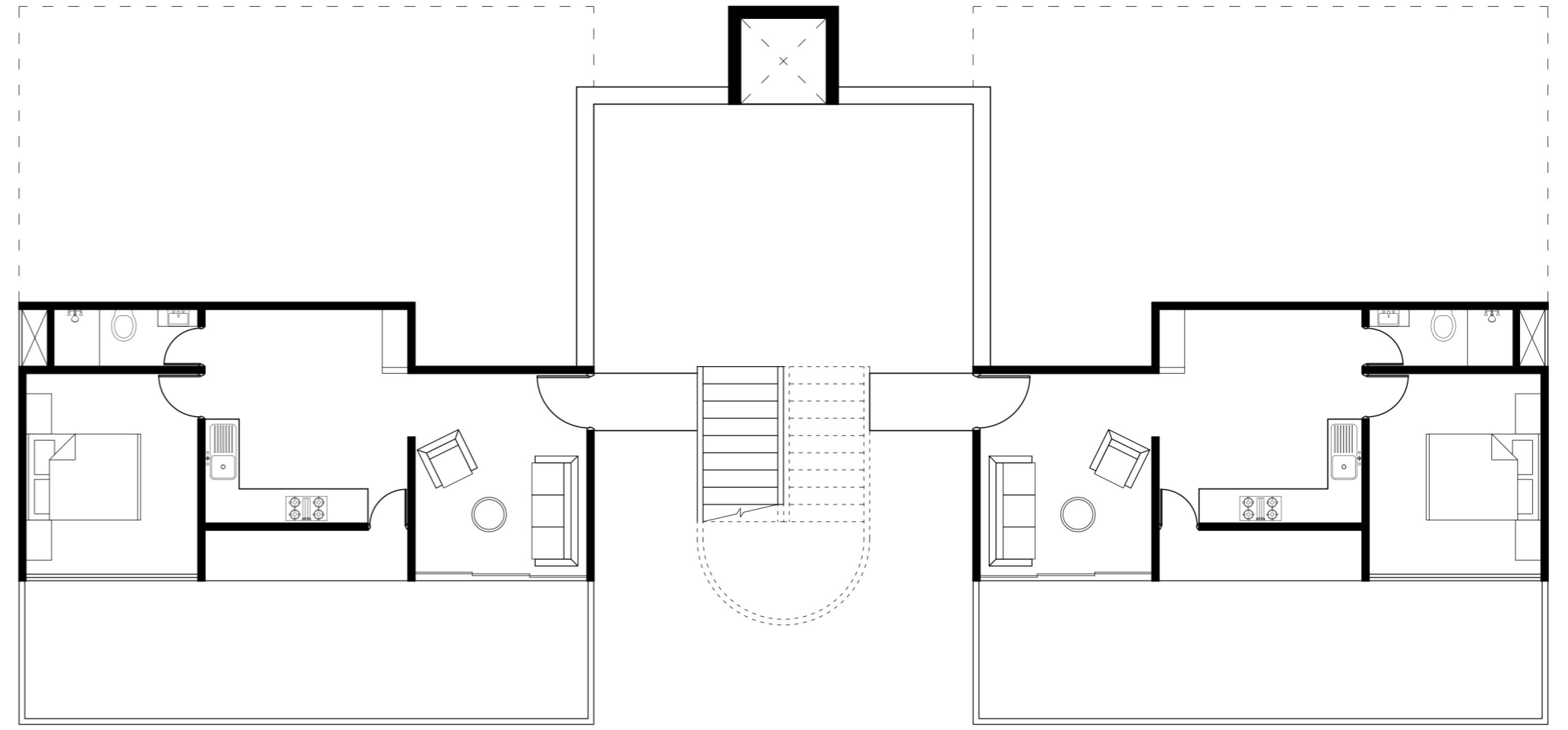
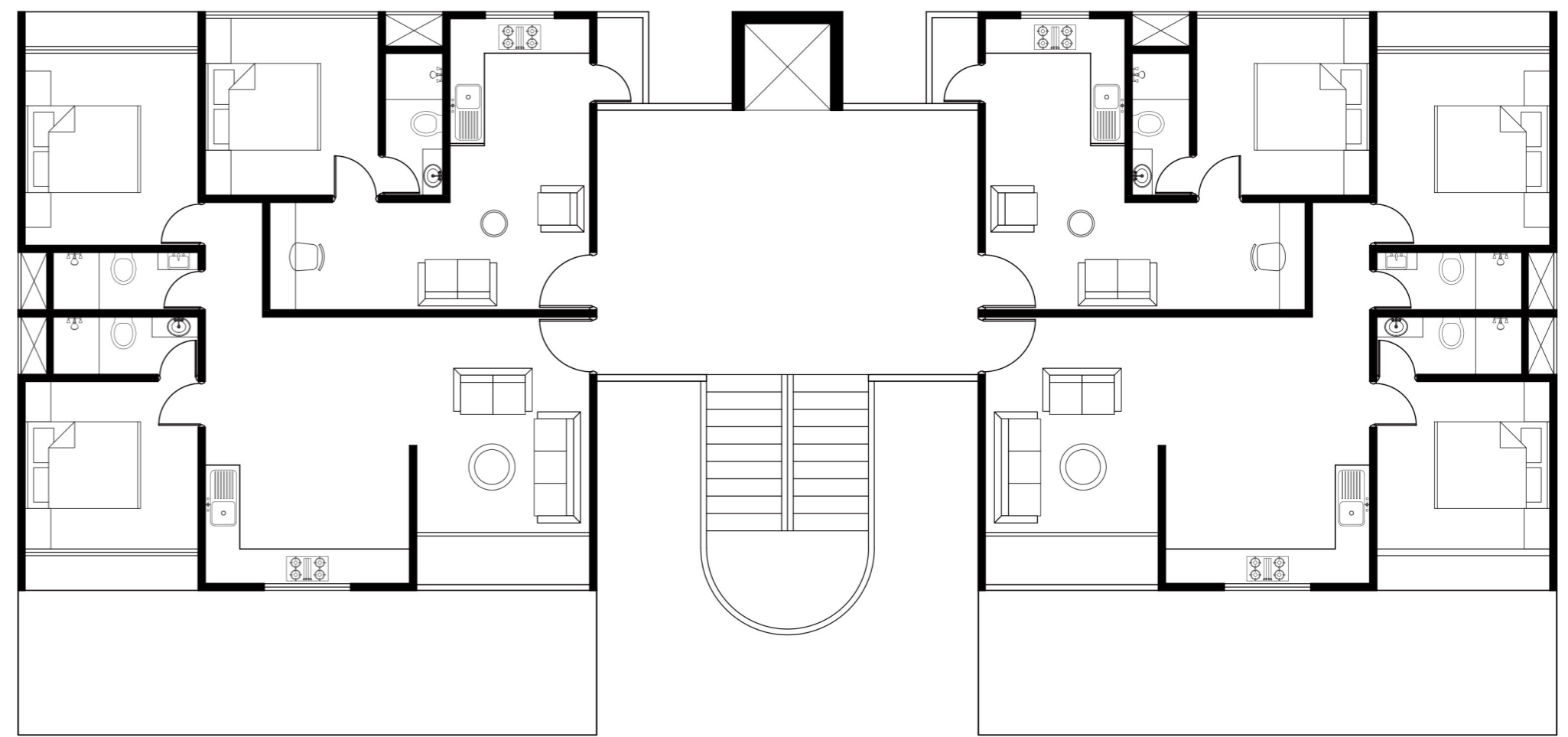


SITE PLAN
1:500



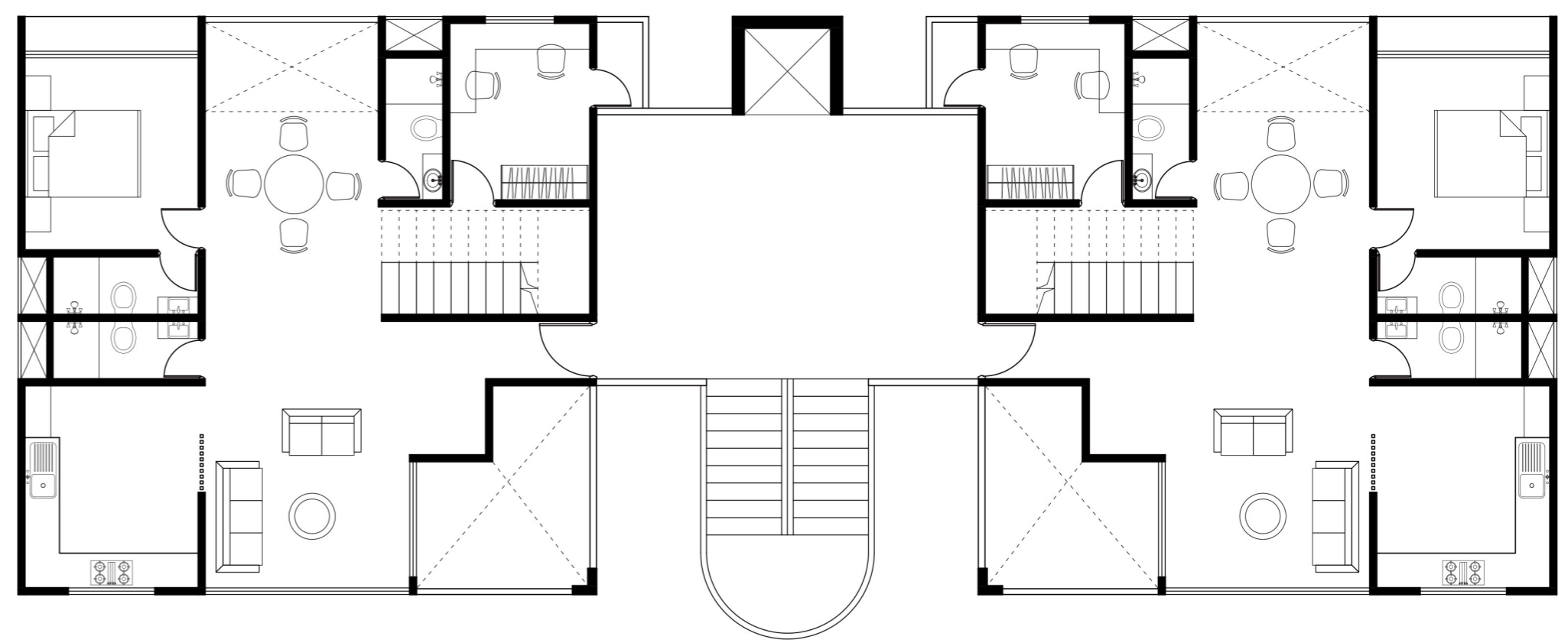
Area- 82.68 sq m

GROUND PLAN
1:50



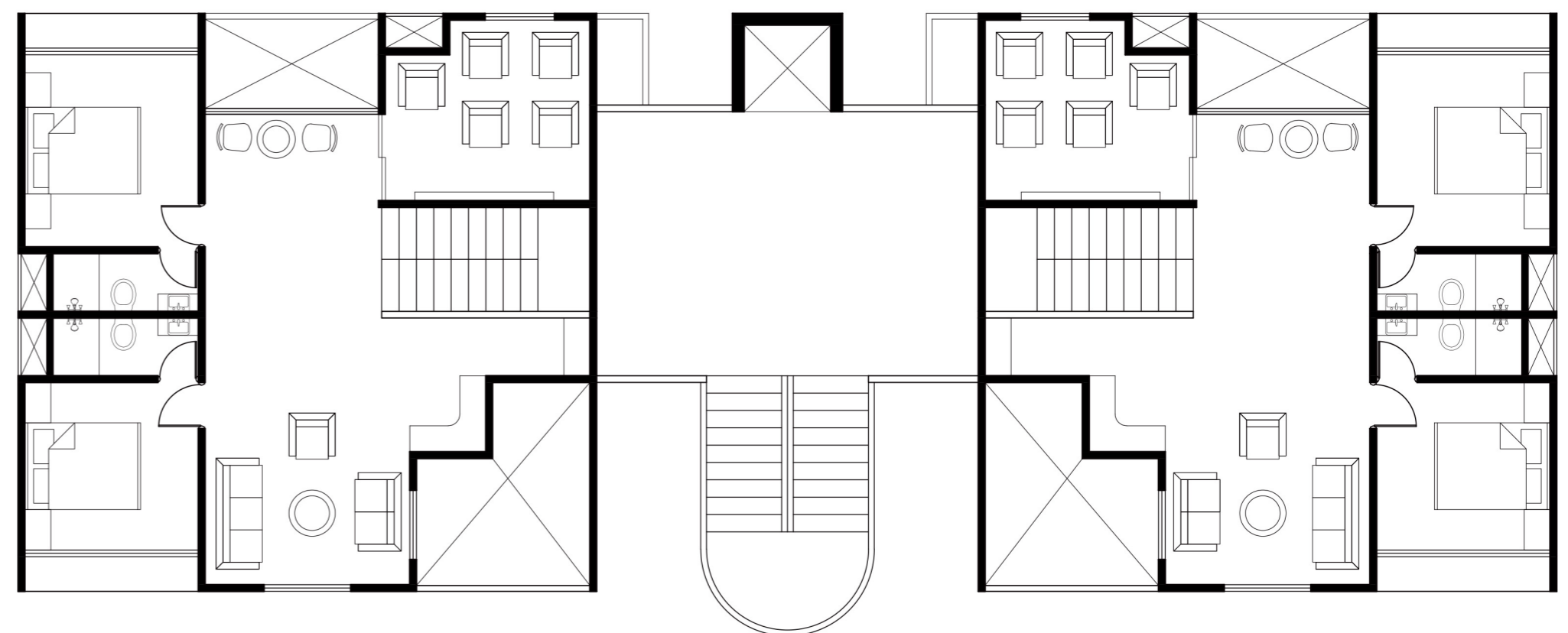
Area- 207.3 sq m

TYPICAL PLAN FOR 2nd to 6th LEVEL
1:50



Area- 207.3 sq m

PENTHOUSE LOWER LEVEL
1:50



Area- 178.08 sq m

PENTHOUSE UPPER LEVEL
1:50

CALCULATIONS

• TOTAL SITE AREA : 105 X 69 sq m.
= 7245 sq m.

• TOTAL BUILT UP AREA AVAILABLE (FSI) : 2.7 X 7245
= 19561.5 sq m.

• FSI (FREE + AVAILABLE) : 1.8 (FREE)
0.9 (AVAILABLE)
= 2.7 MAX PERMISSIBLE

• DIFFERENT UNITS : → 1BHK - Type A
→ 1BHK - Type B.
→ 2BHK -
→ 3BHK - PENTHOUSE.

• 1 BHK - A : BUILT UP AREA - 44.4 sq m (unit) + 25 sq m (garden)
= 69.4 sq m.

1 BHK - B : BUILT UP AREA - 35.0 sq m.

• 2BHK : BUILT UP AREA - 66.3 sq m.

• 3 BHK PENTHOUSE : BUILT UP AREA - 99.9 sq m (LOWER LVL)
- 90.3 sq m (UPPER LVL)
TOTAL - 190.2 sq m.

• NO. OF BLOCK : 9 BLOCKS
BUILT UP AREA (FOR FSI) : 9 X [82.68 + (207.3)(5) + 395.38]
= 9 X 1504.56
= 13541.04 sq m
= 15406.74 sq m

