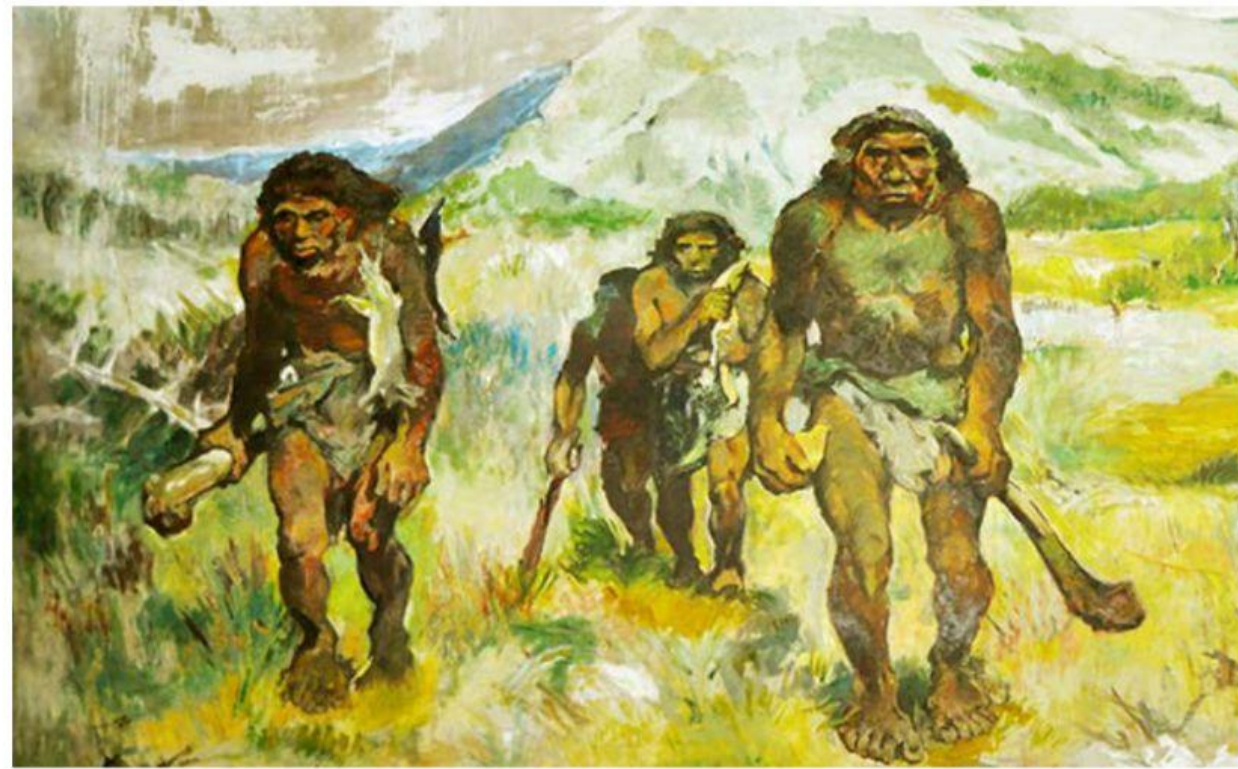


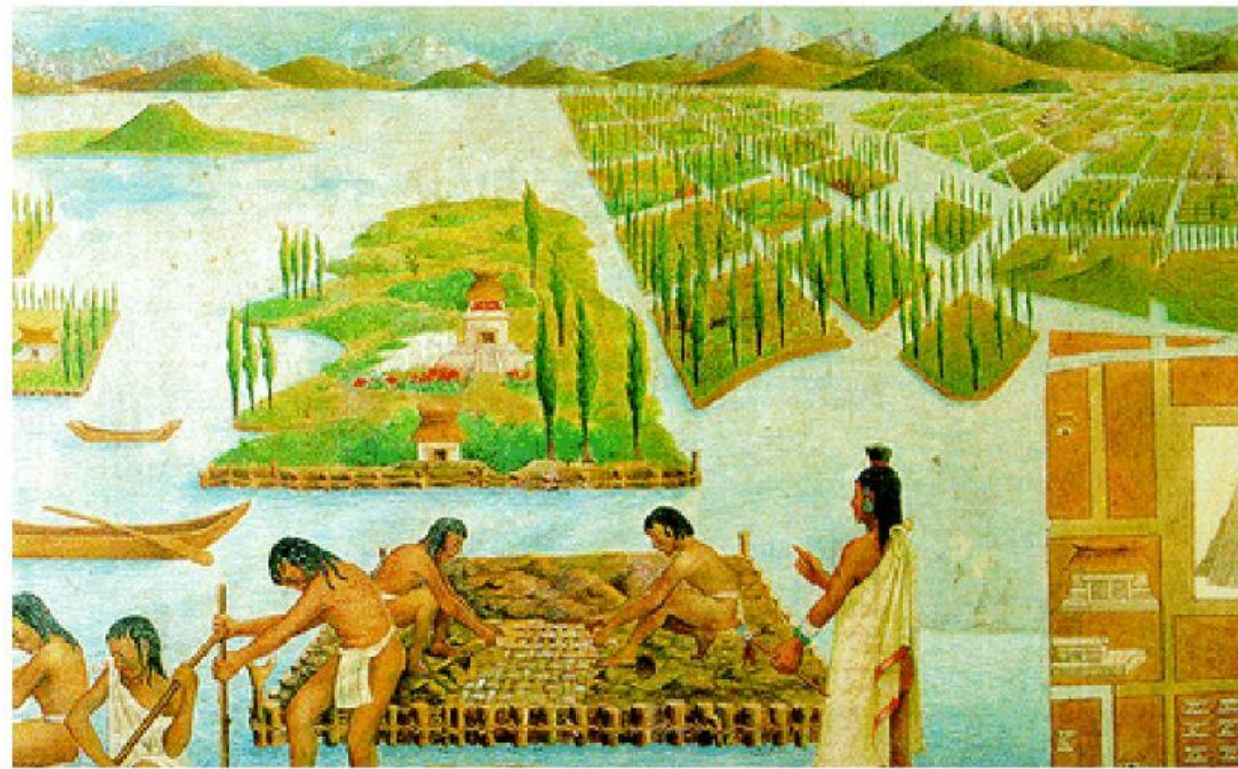
People over Profitability

Ananya Varambally | UG180061

Work-Live Housing

How it came about?





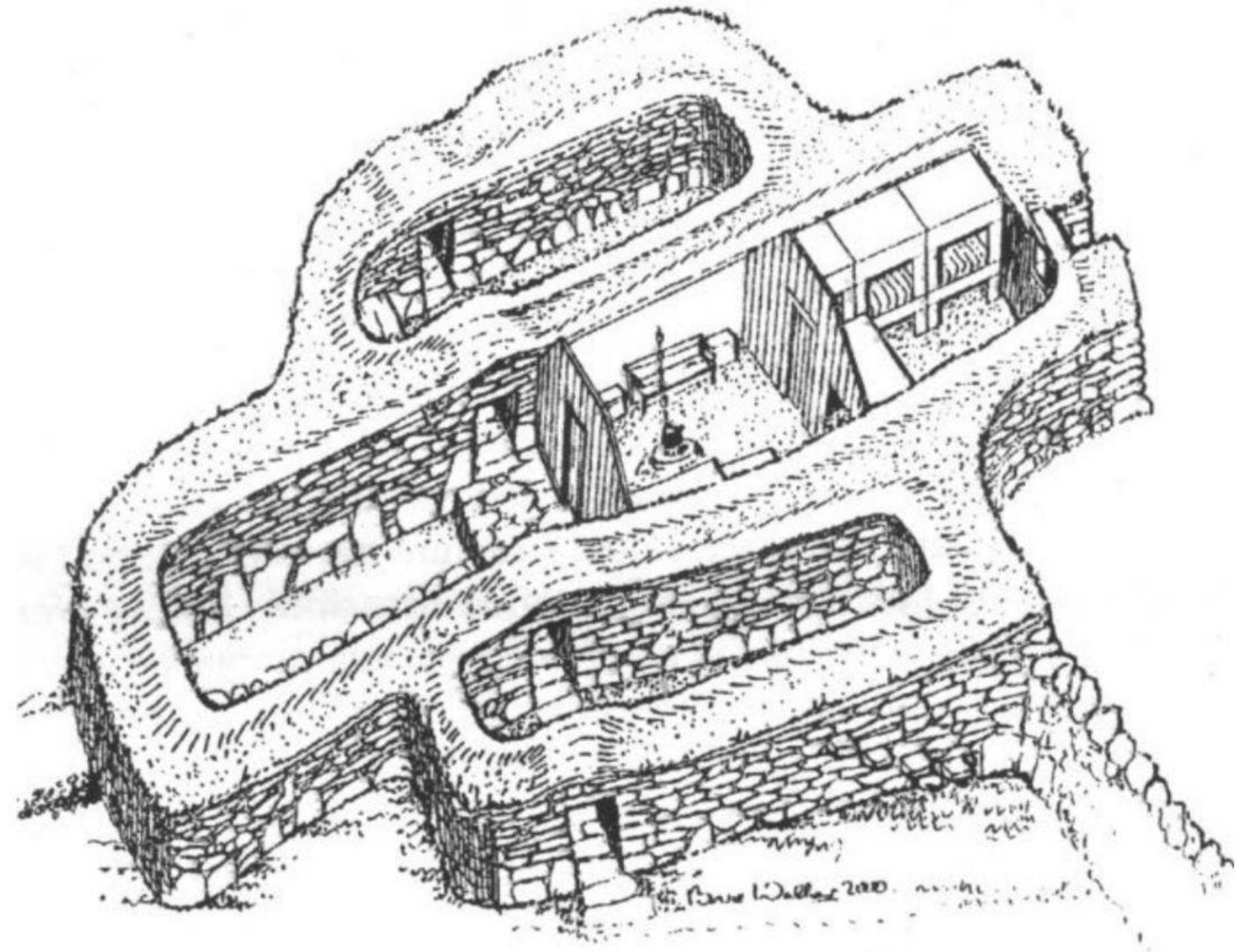
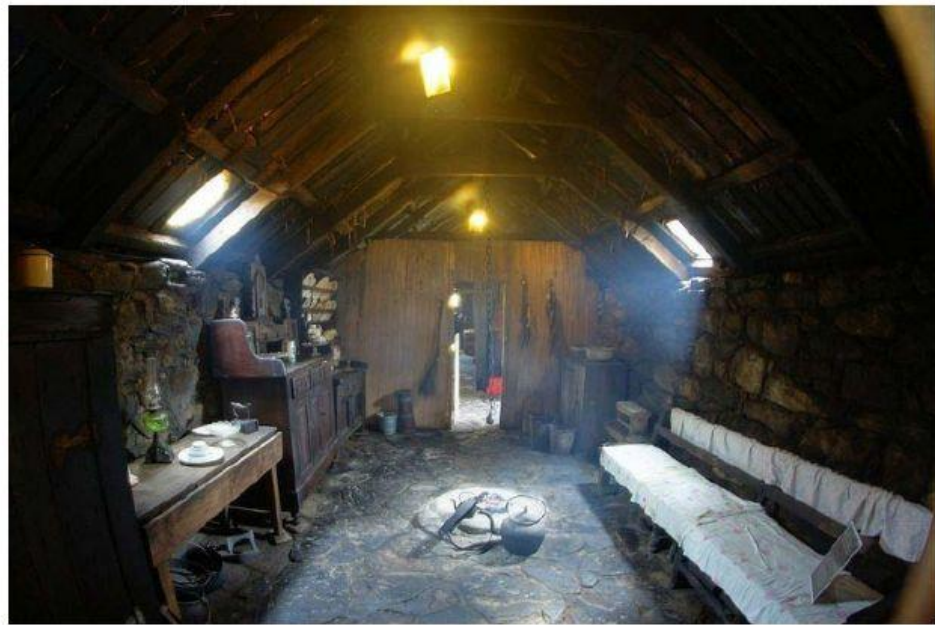




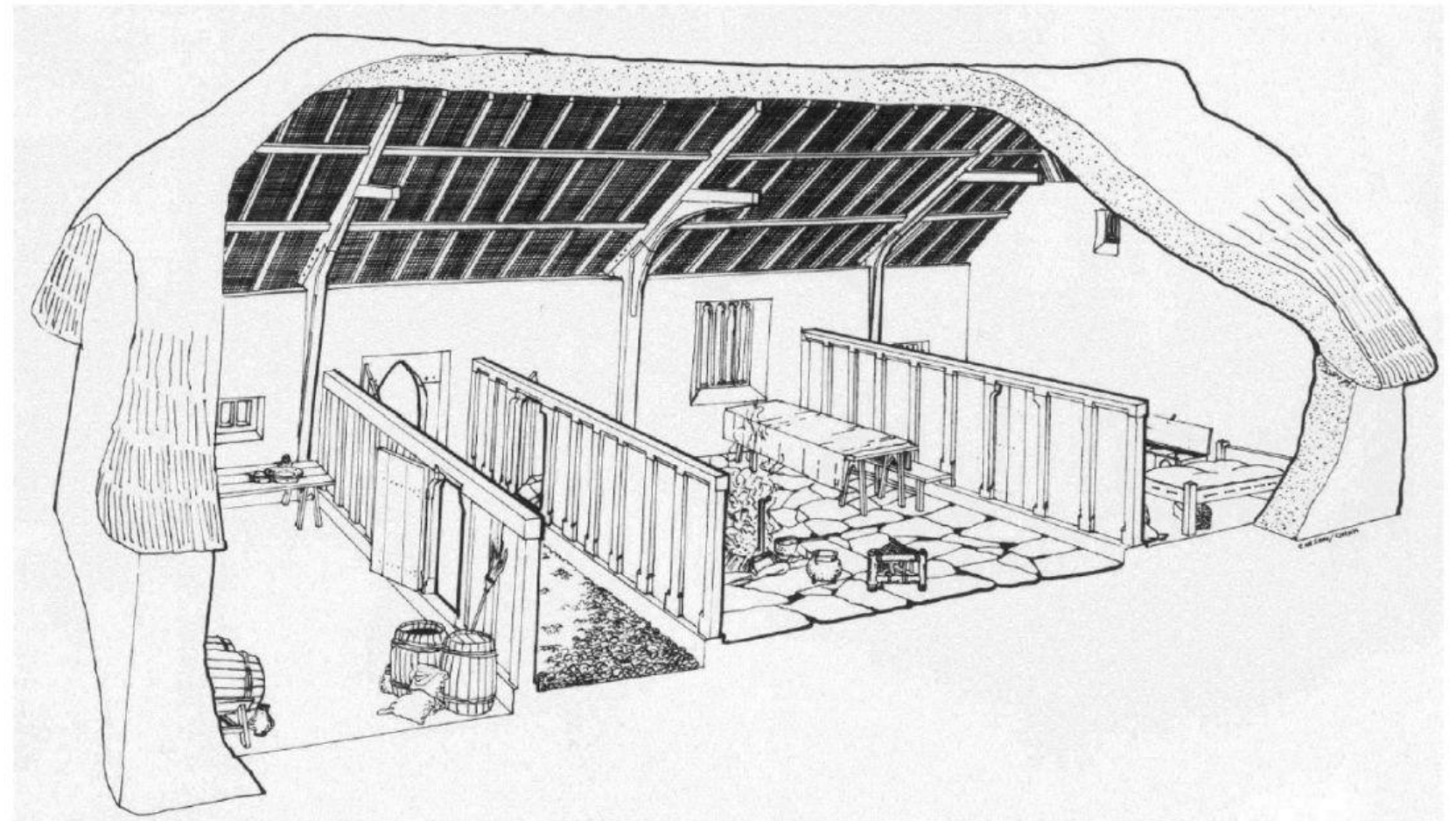
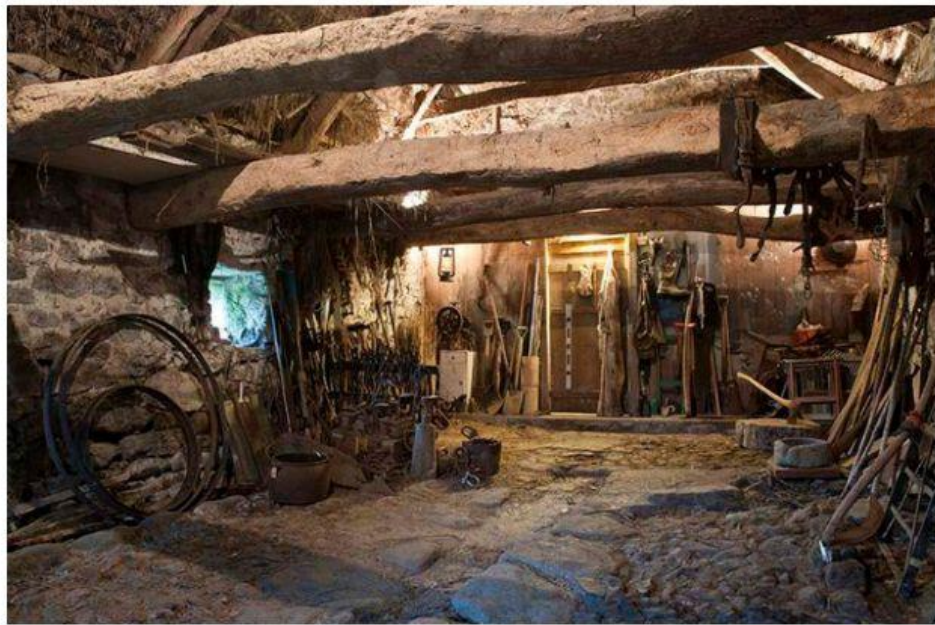


Traditional Home based
work around the world

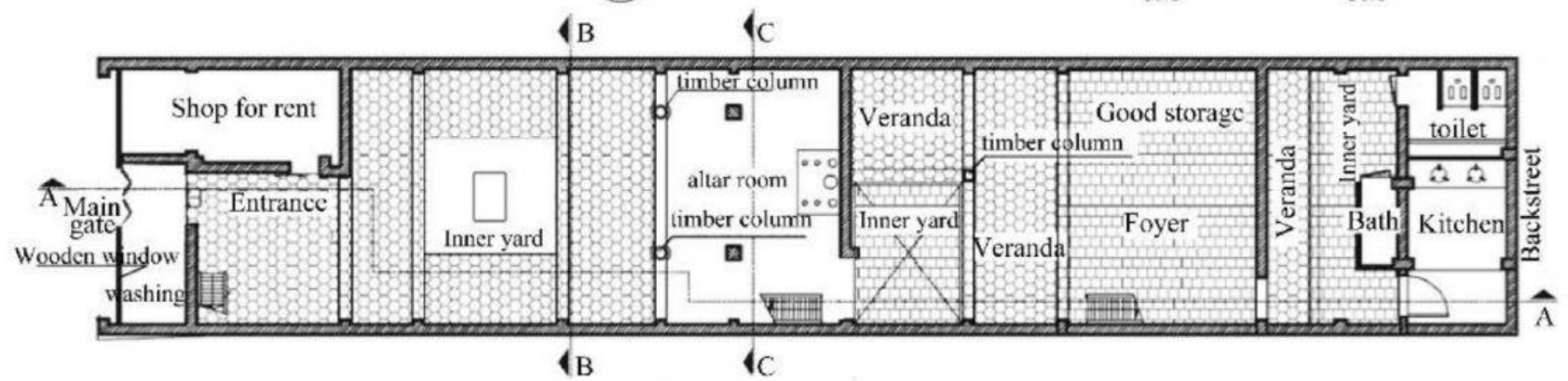
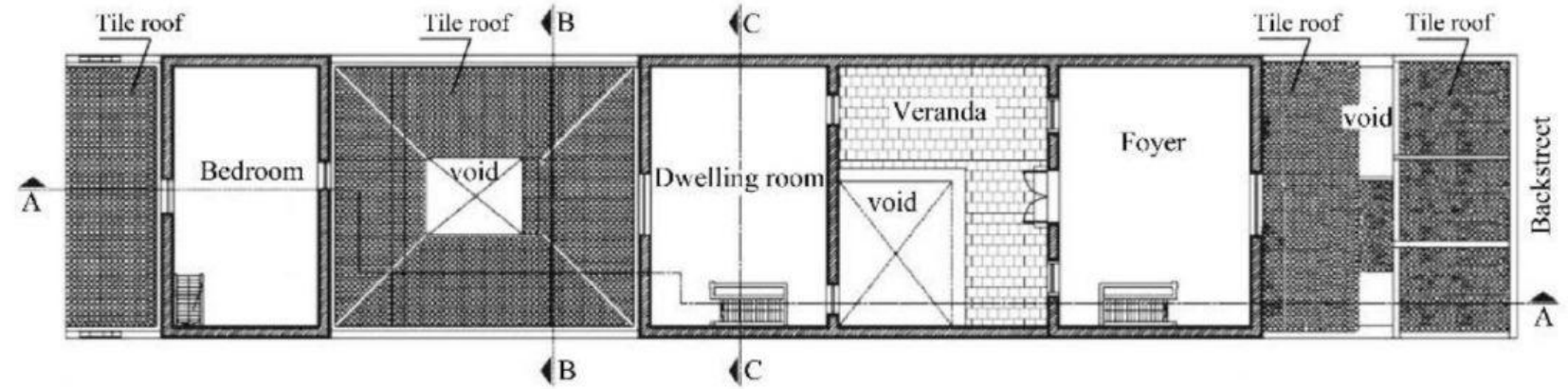
The Blackhouse



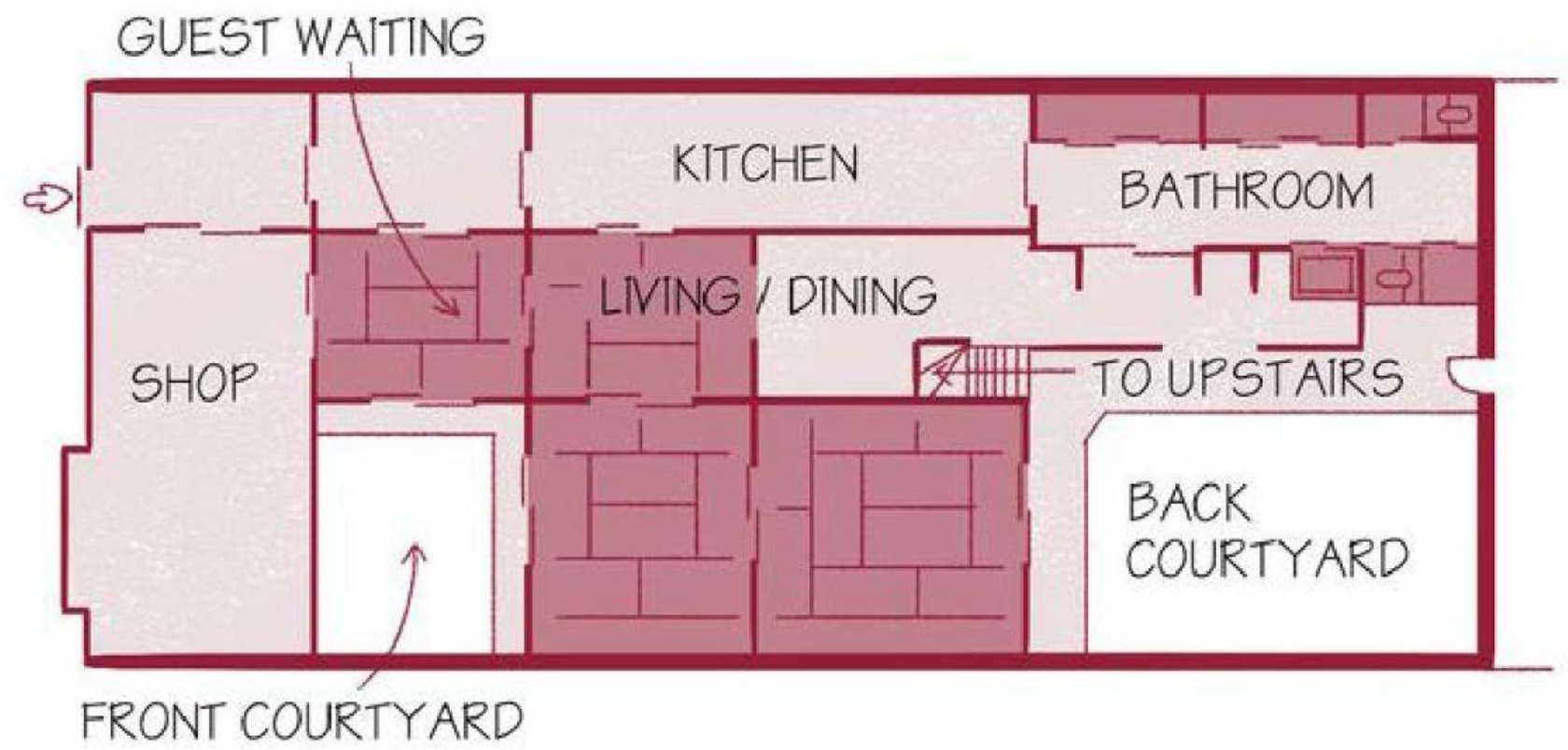
Dartmoor Longhouse



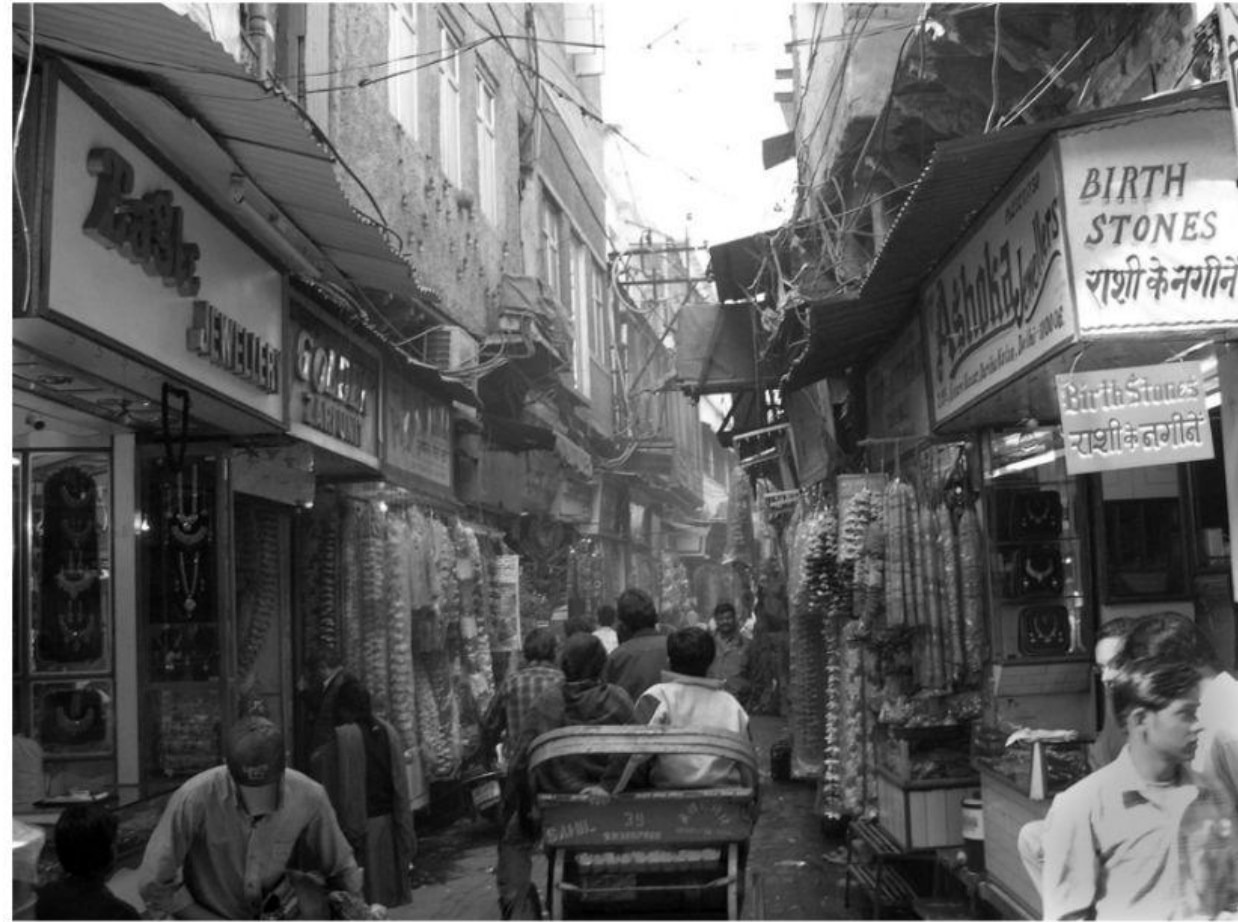
Vietnamese Tubehouse

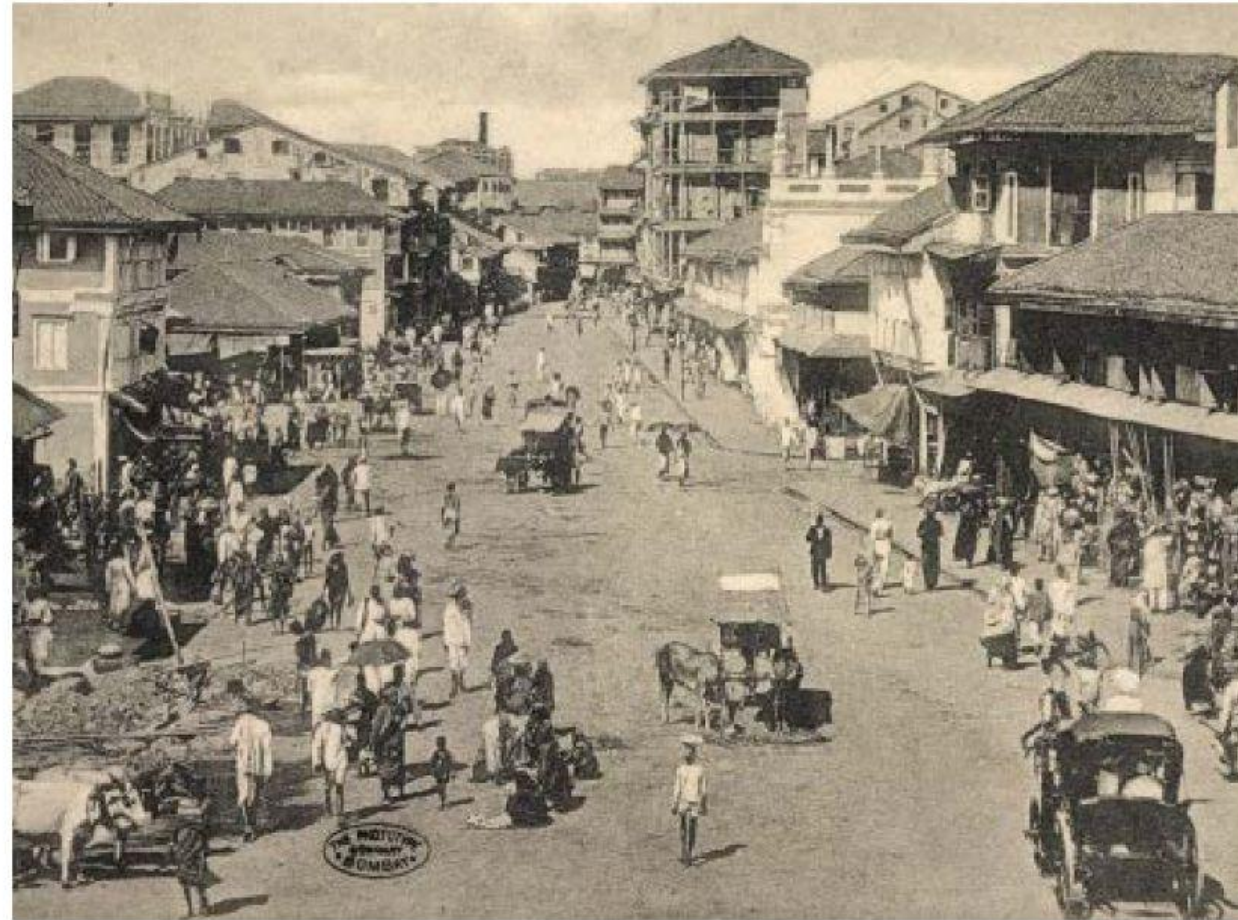


Japanese Machiya



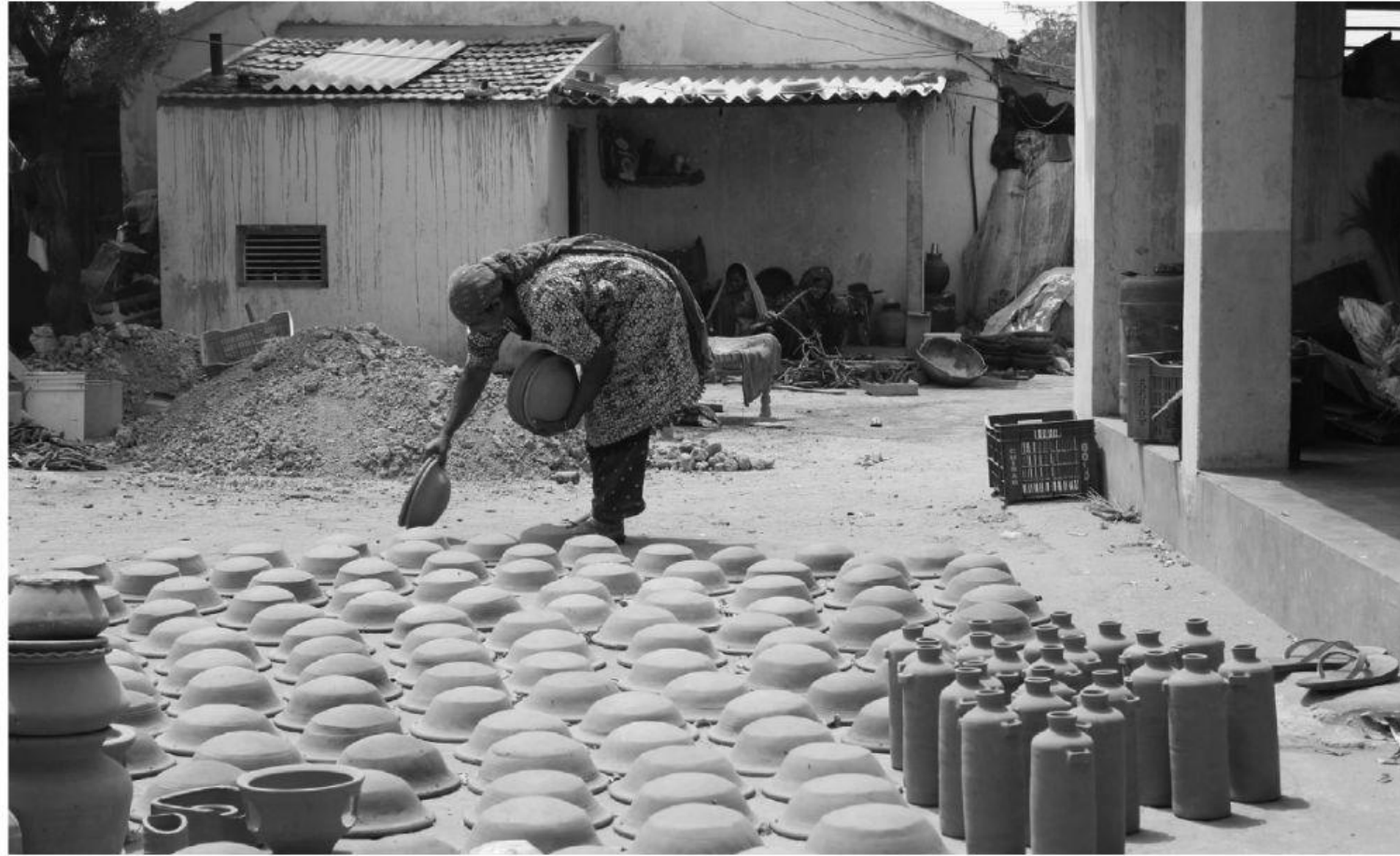
Traditional Home based work in India





Communities practicing
home based work







Home Based Work- Case Studies



House of Vimla Ben

She runs a tiffin service at home.
She resides in Dhalni Pol

House of Dilipbhai

He is a tailor at Chitrakut
Apartments in Ahmedabad

House of Bhavsar Ben

She takes tuition for children.
She lives in Dhalni Pol.

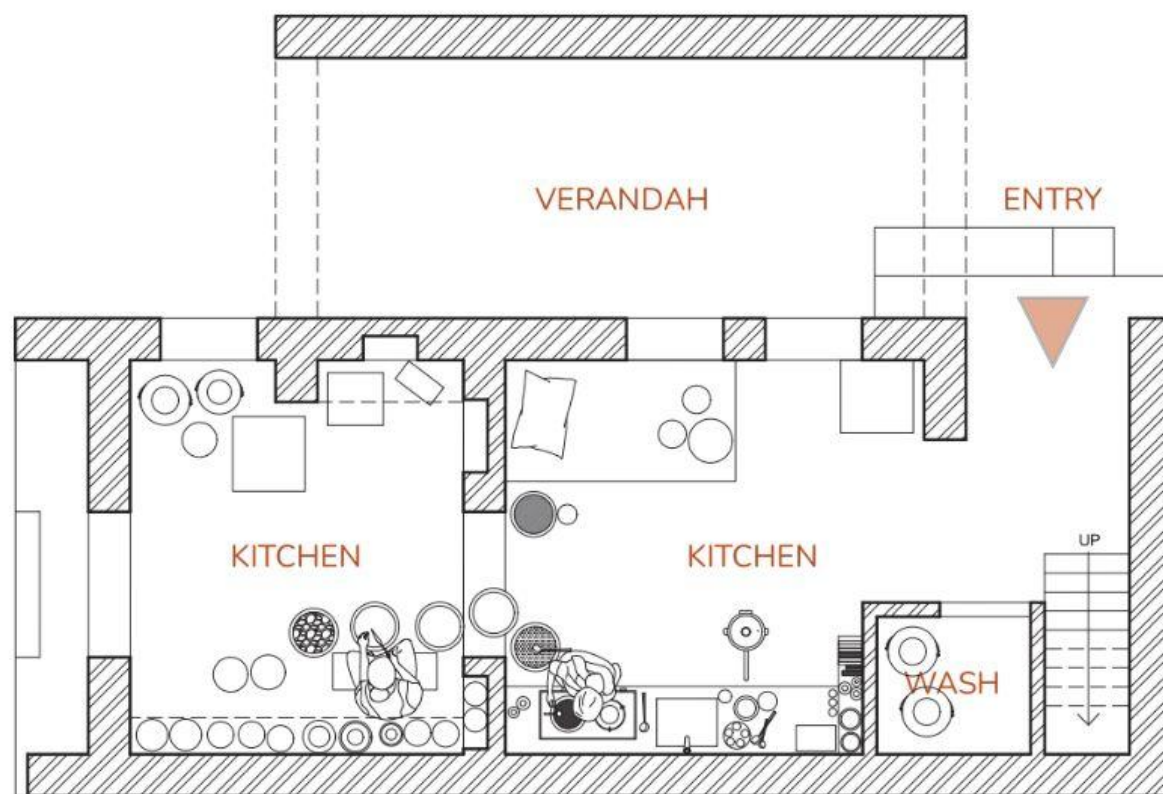
Case I House of Vimla Ben

Location- Dhalni Pol, Ahmedabad

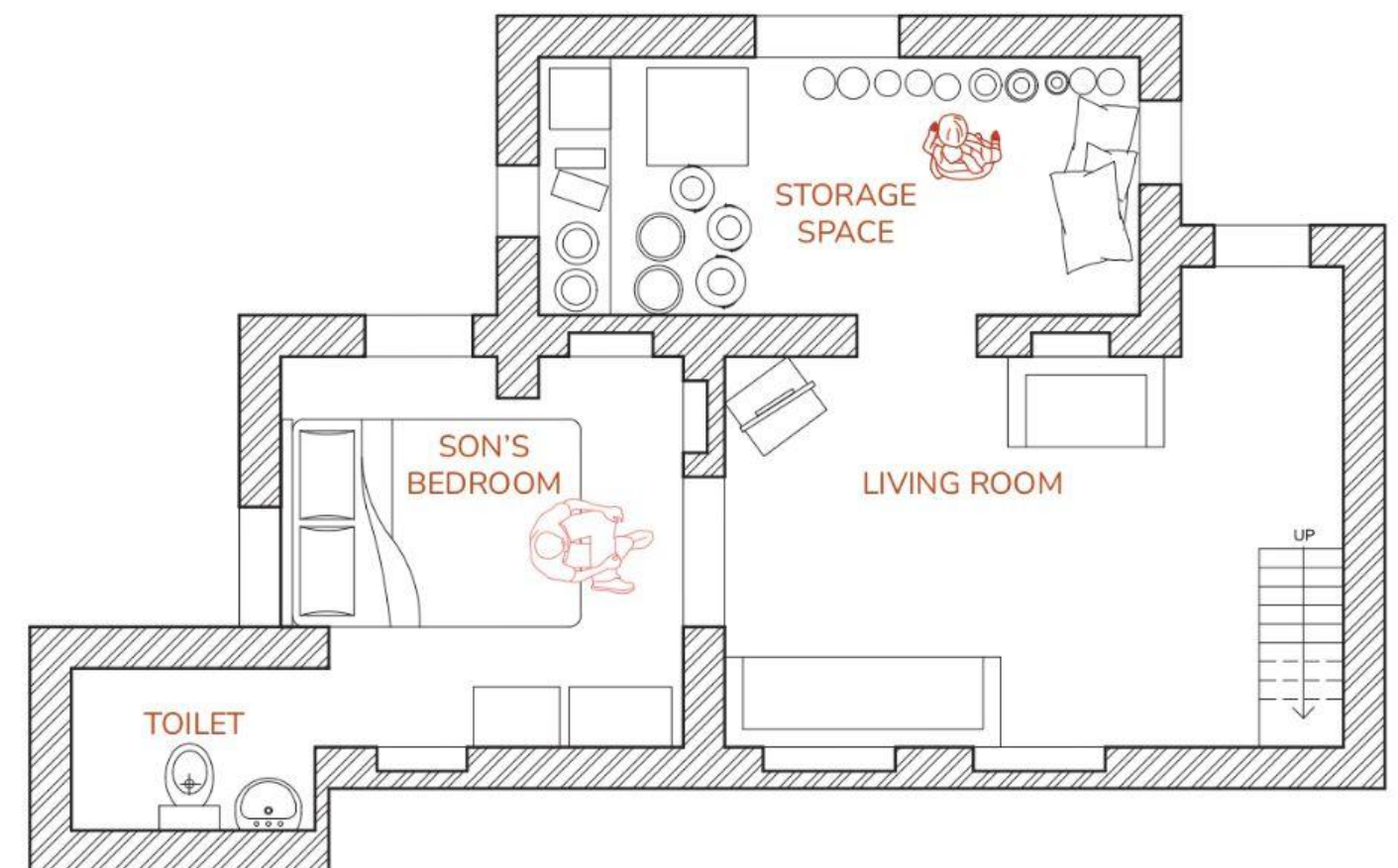
Owner- Vimla Ben

Family Members- 2 (Vimla Ben and her son)

Occupation- She has a tiffin service

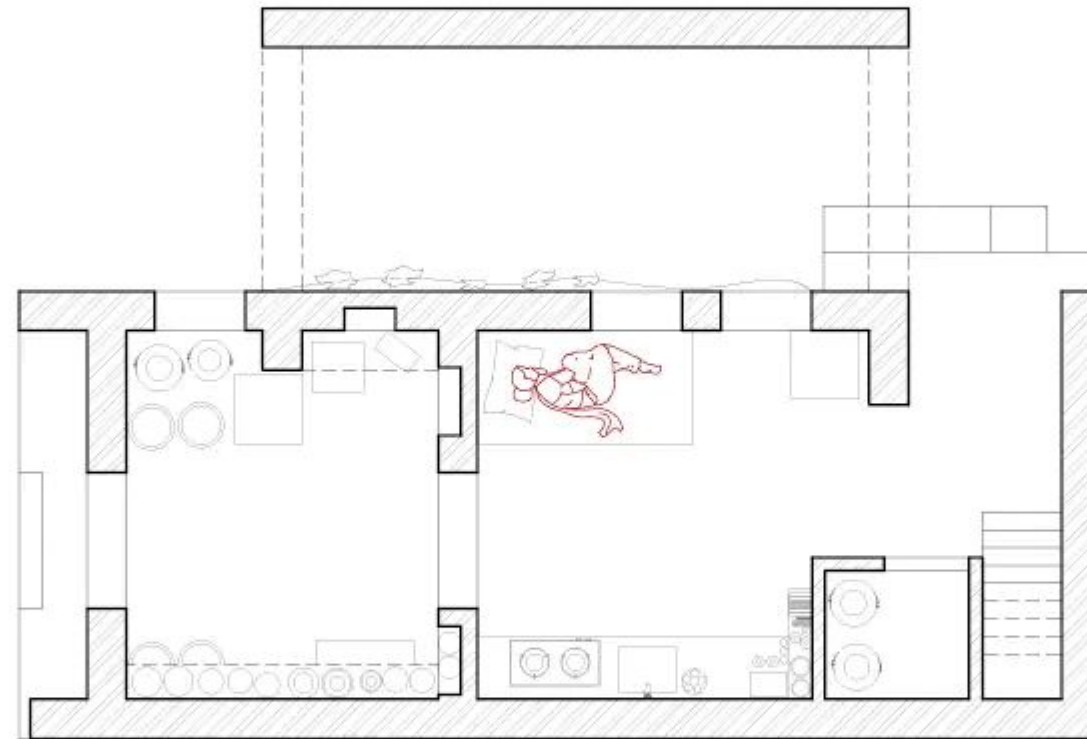


GROUND FLOOR PLAN

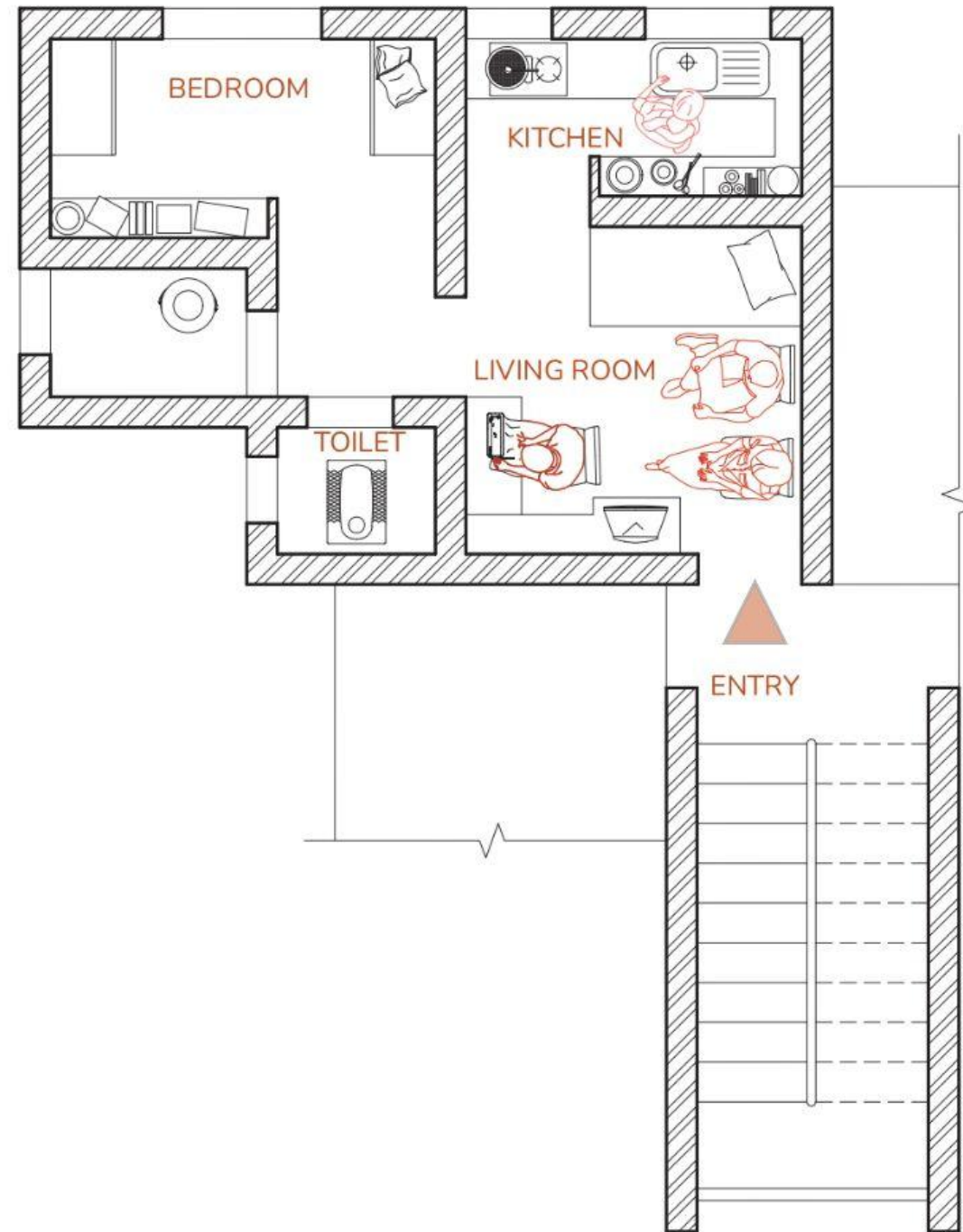


FIRST FLOOR PLAN

Vimla Ben's Routine



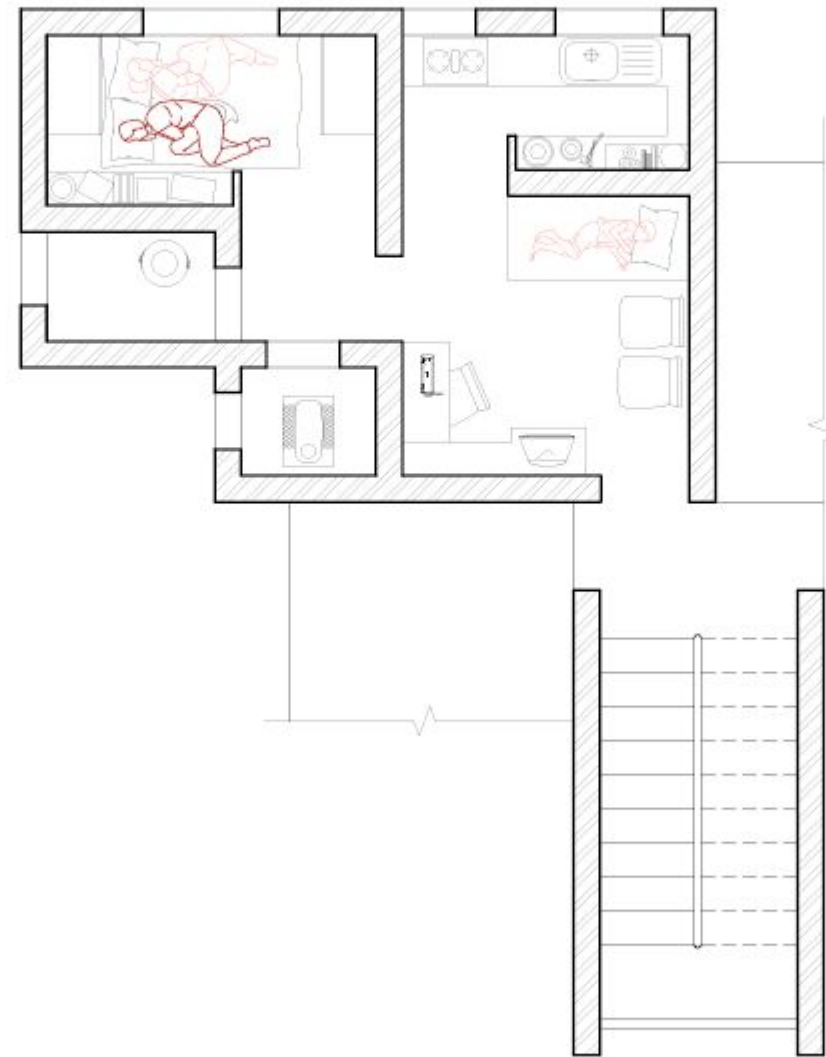
Case II House of Dilipbhai



Location- Srinagar Apartment, Chitrakut society, Bhuyangdev, Ahmedabad
Owner- Dilipbhai
Family Members- 3 (Dilipbhai, his wife and son)
Occupation- He is a tailor

SECOND FLOOR PLAN

Dilipbhai's Routine



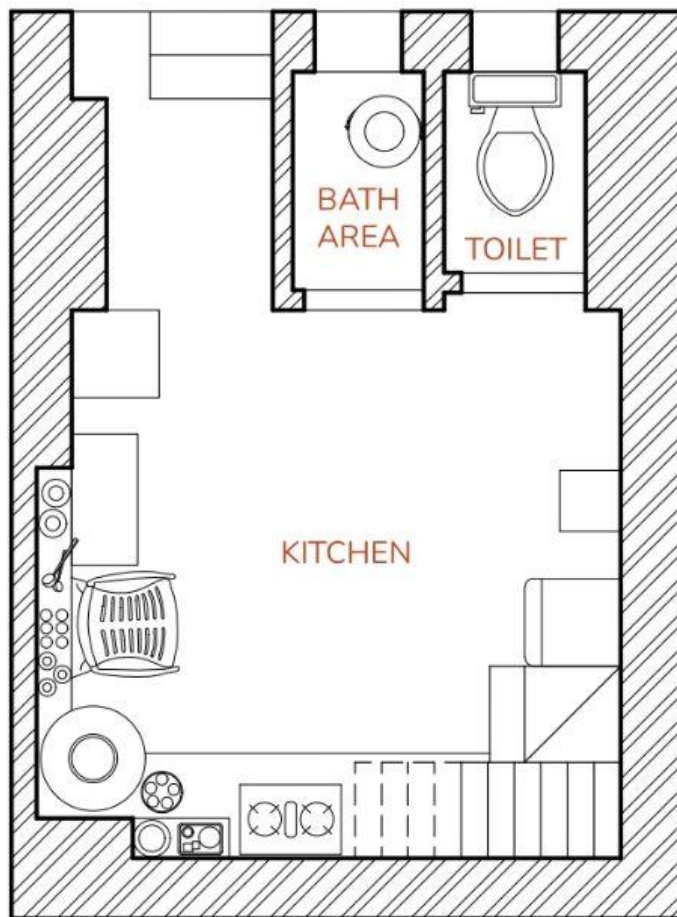
Case III House of Bhavsar Ben

Location- Dhalni Pol, Ahmedabad

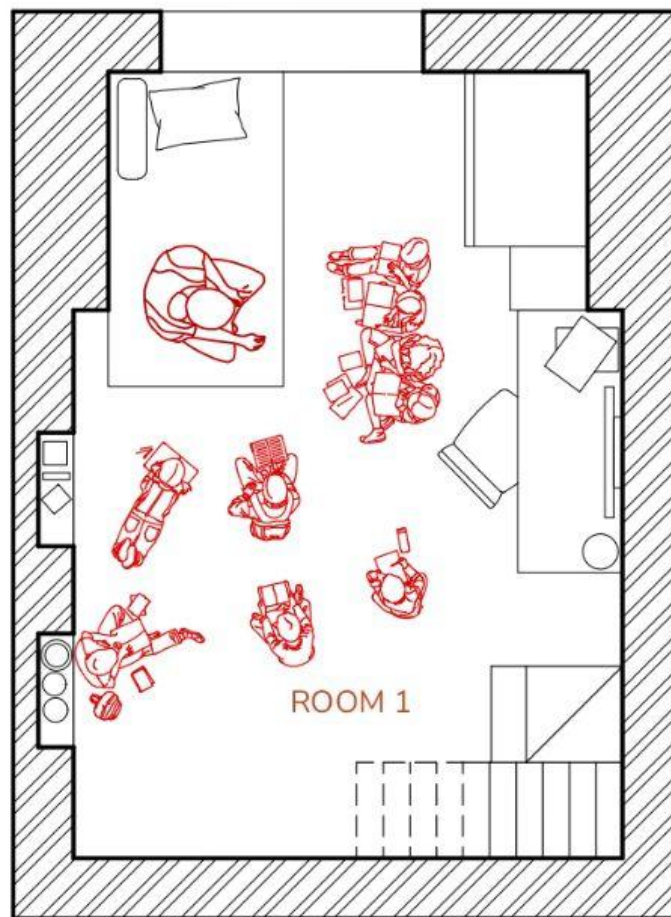
Owner- Bhavsar Jarpani

Family Members- 3 (Bhavsar Ben, her husband and daughter)

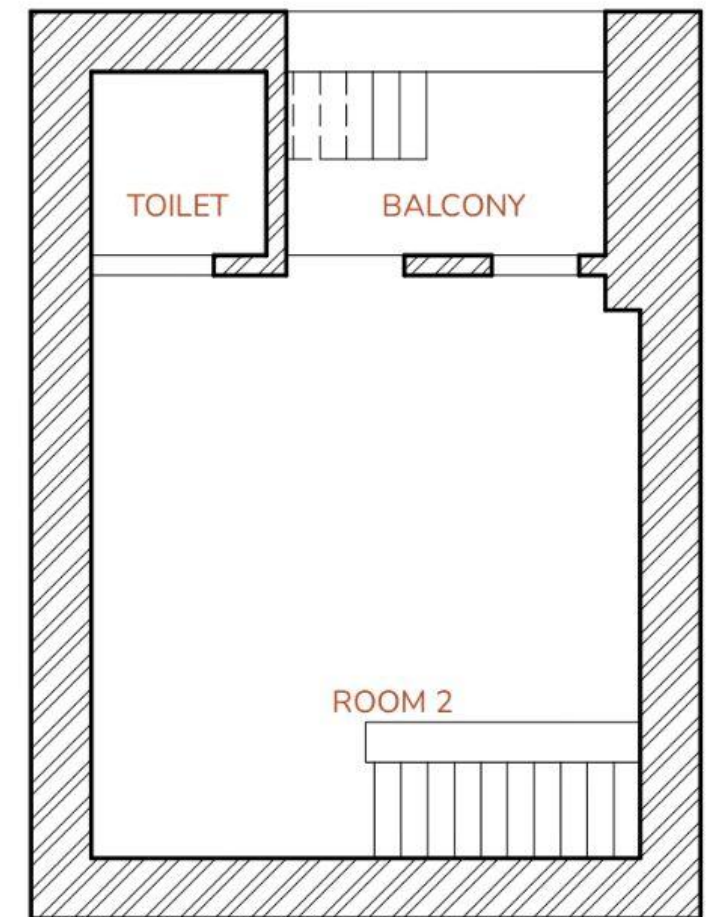
Occupation- She is a tuition teacher



GROUND FLOOR PLAN

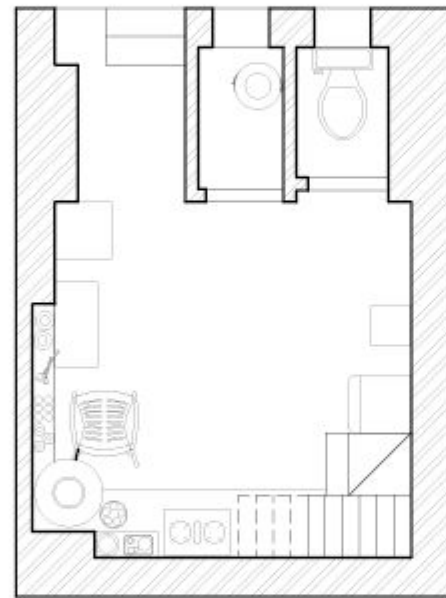


FIRST FLOOR PLAN



SECOND FLOOR PLAN

Bhavsar Ben's Routine



In two cases, Vimla Ben and Dilipbhai's house, it is observed that the workspace was the frontmost room. In the case of Bhavsar Ben's house, the tuition takes place in the first floor bedroom. This takes place due to a lack of space in the front room. Hence, all of them preferred the workstation to be in the front to keep private space disconnected from the public.

In all three cases, it is observed the workspace is used as a multifunctional space. Hence, in a work-live typology, it is ideal to have a flexible space for a workstation.

The significance of a work-live house has reduced over the years. Specially in housing, it's consideration is negligible.

But with this few questions come to mind.

Given the nature of housing, how can a work home be designed to address adaptability and change to non-occupational use?

How predefined or flexible can the house be? How can the balance between the two be decided?

Bibliography

1. Holliss, F. (2015, February 11). Beyond Live/Work. In *The Architecture of Home-Based Work*. Routledge.
2. Bhadja. (2018, January 1). DSpace at CEPT University: Negotiations in live work typology of housing. DSpace at CEPT University: Negotiations in Live Work Typology of Housing. Retrieved October 30, 2022, from <http://hdl.handle.net/20.500.12725/13277>
3. Chauhan, R. S. (2010, January 1). DSpace at CEPT University: Pol as mass housing : modern interpretation of Pol. DSpace at CEPT University: Pol as Mass Housing : Modern Interpretation of Pol. Retrieved October 30, 2022, from <http://hdl.handle.net/20.500.12725/6637>
4. Vasava, J. S. (2013, January 1). DSpace at CEPT University: Documenting factors responsible for changes in the single dwelling housing unit in mass housing. DSpace at CEPT University: Documenting Factors Responsible for Changes in the Single Dwelling Housing Unit in Mass Housing. Retrieved October 30, 2022, from <http://hdl.handle.net/20.500.12725/13082>
5. Modi, D. (2018, January 1). DSpace at CEPT University: Live-work typology in an urban context : a case of Ahmedabad city. DSpace at CEPT University: Live-work Typology in an Urban Context : A Case of Ahmedabad City. Retrieved October 30, 2022, from <http://hdl.handle.net/20.500.12725/15904>