

She Said, He Said

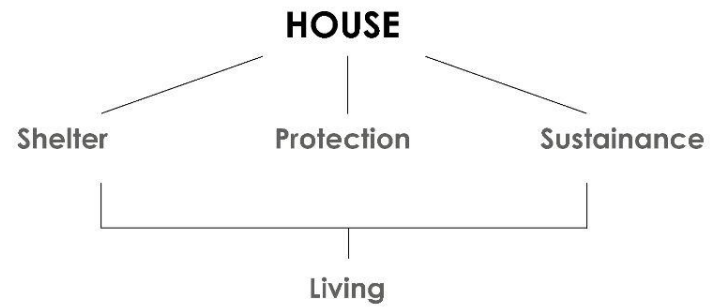
HOUSE

Shelter

Protection

Sustenance

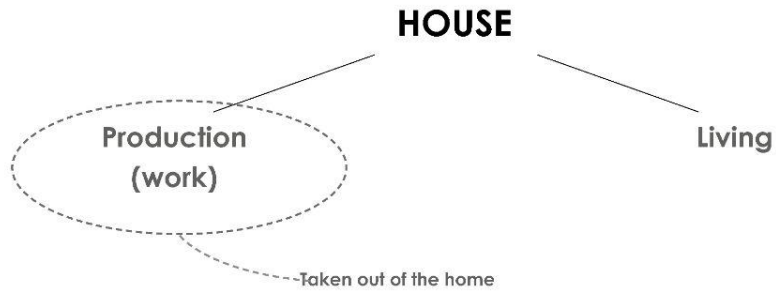




HOUSE

**Production
(work)**

Living



LIFESTYLE/ASPIRATIONS?



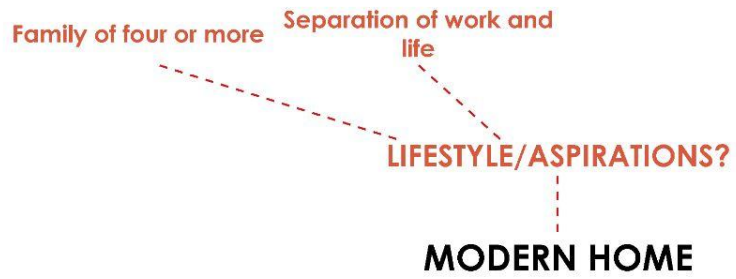
MODERN HOME

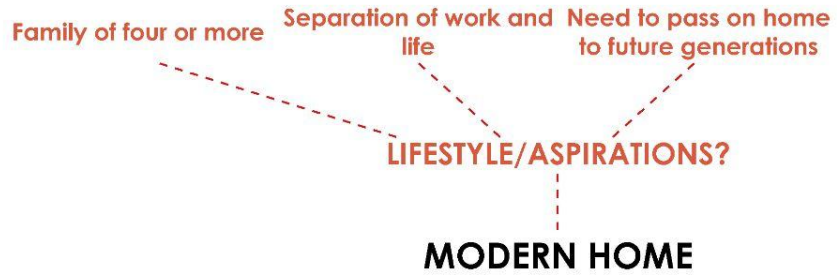
Family of four or more

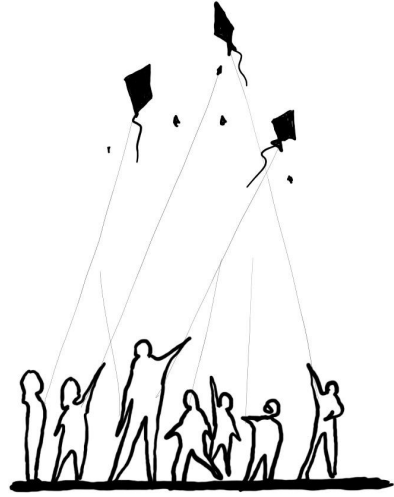
LIFESTYLE/ASPIRATIONS?

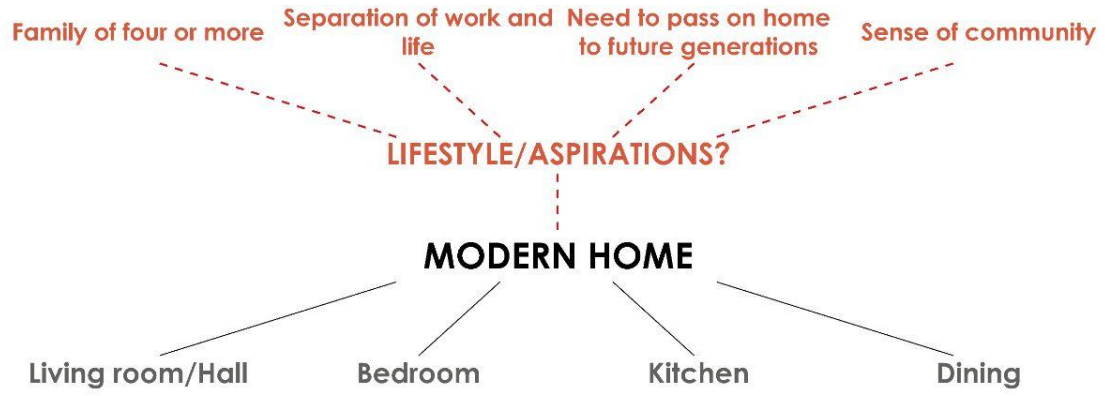
MODERN HOME











MODERN HOME

Living room/Hall

Bedroom

Kitchen

Dining



MODERN HOME

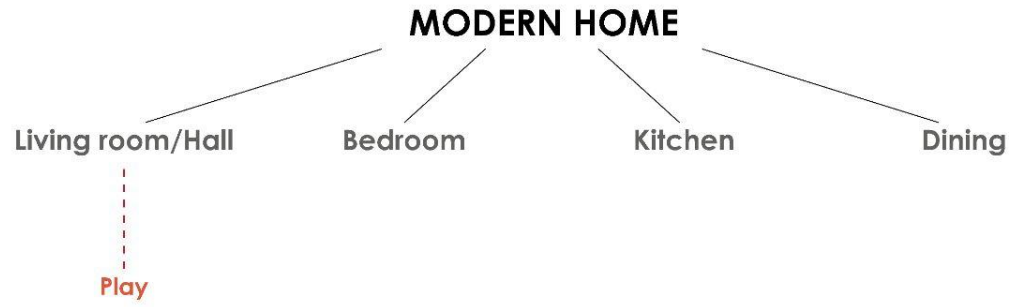
Living room/Hall

Bedroom

Kitchen

Dining

Play



MODERN HOME

Living room/Hall

Bedroom

Kitchen

Dining

Play

Sleep

MODERN HOME

Living room/Hall

Play

Bedroom

Sleep

Kitchen

Cook

Dining

MODERN HOME

Living room/Hall

Play

Bedroom

Sleep

Kitchen

Cook

Dining

Eat

CHANGE IN LIFESTYLE/ASPIRATIONS

MODERN HOME

Living room/Hall

Bedroom

Kitchen

Dining

Different kinds of families

CHANGE IN LIFESTYLE/ASPIRATIONS

MODERN HOME

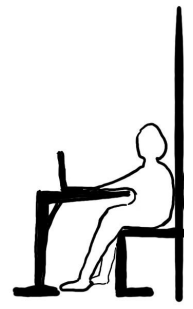
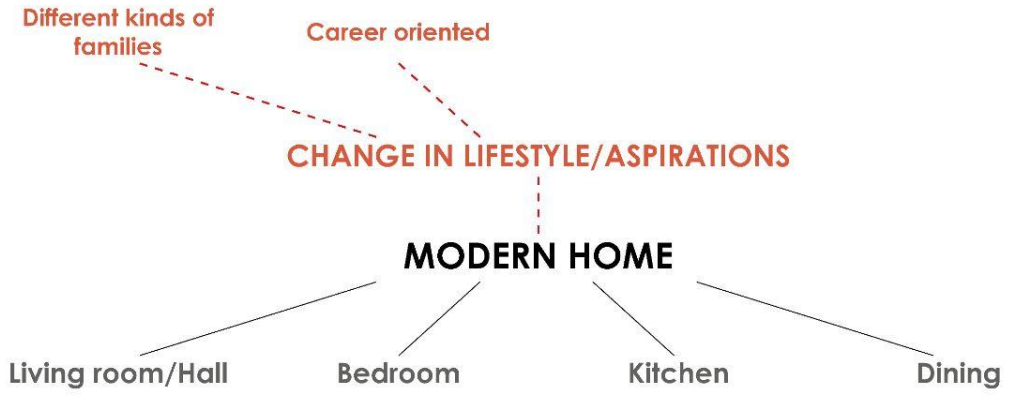
Living room/Hall

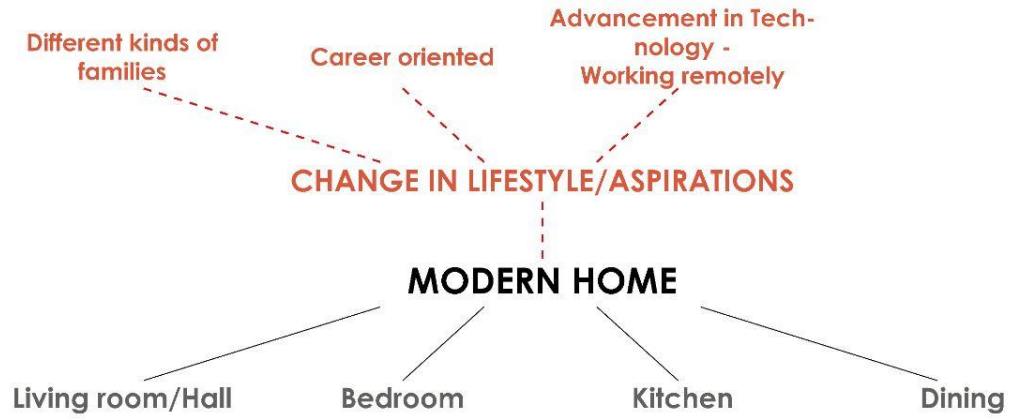
Bedroom

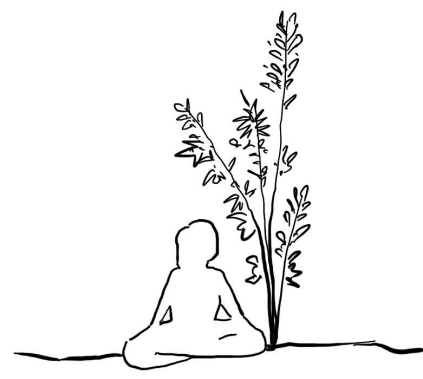
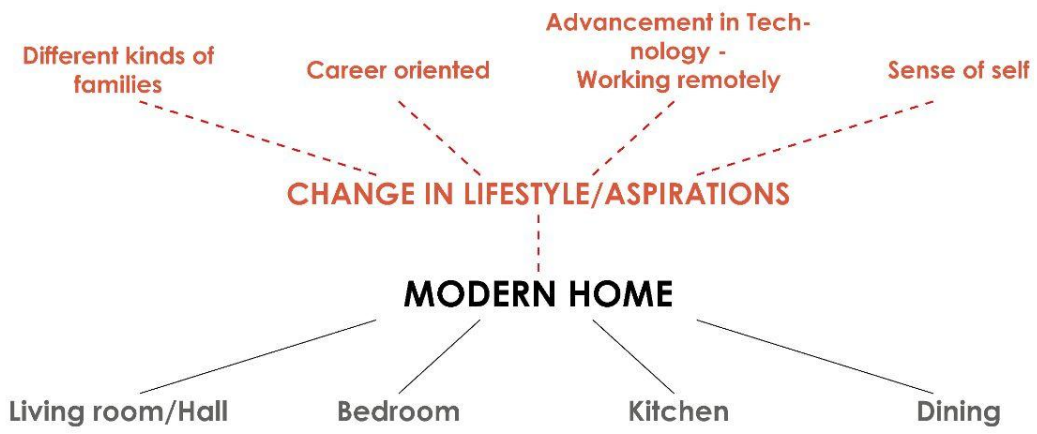
Kitchen

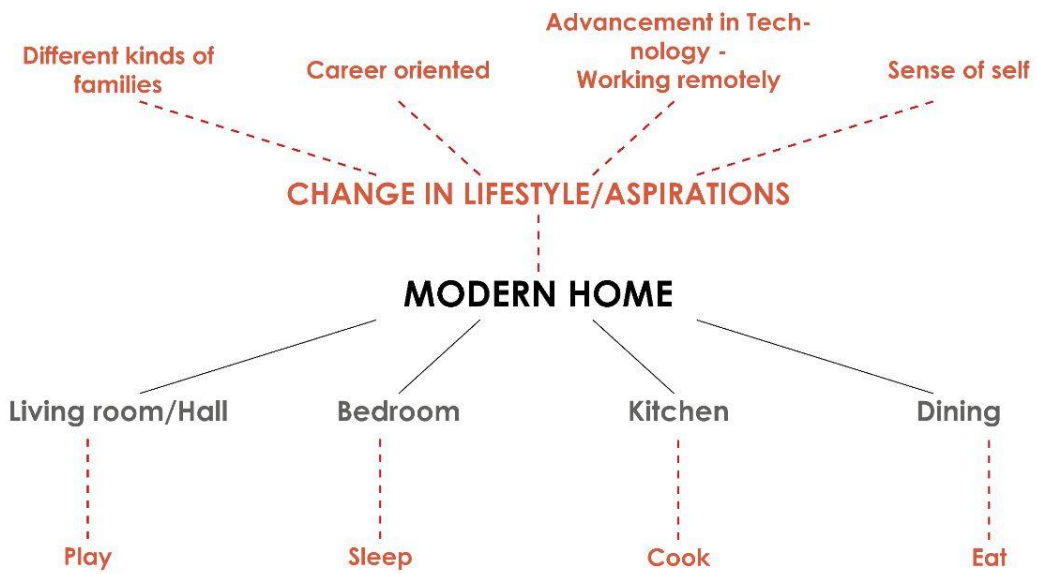
Dining

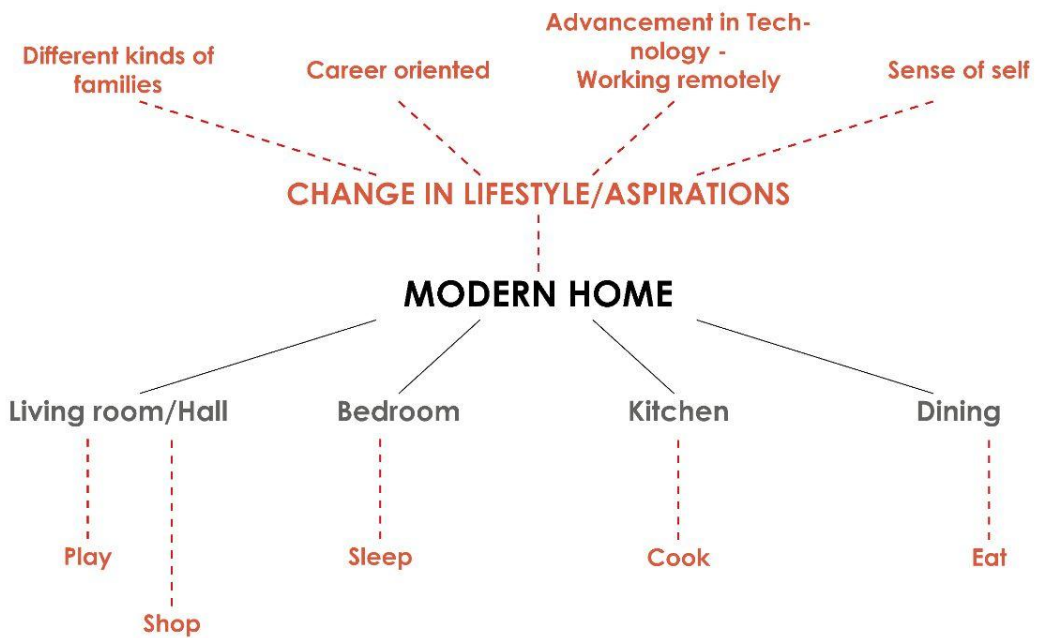


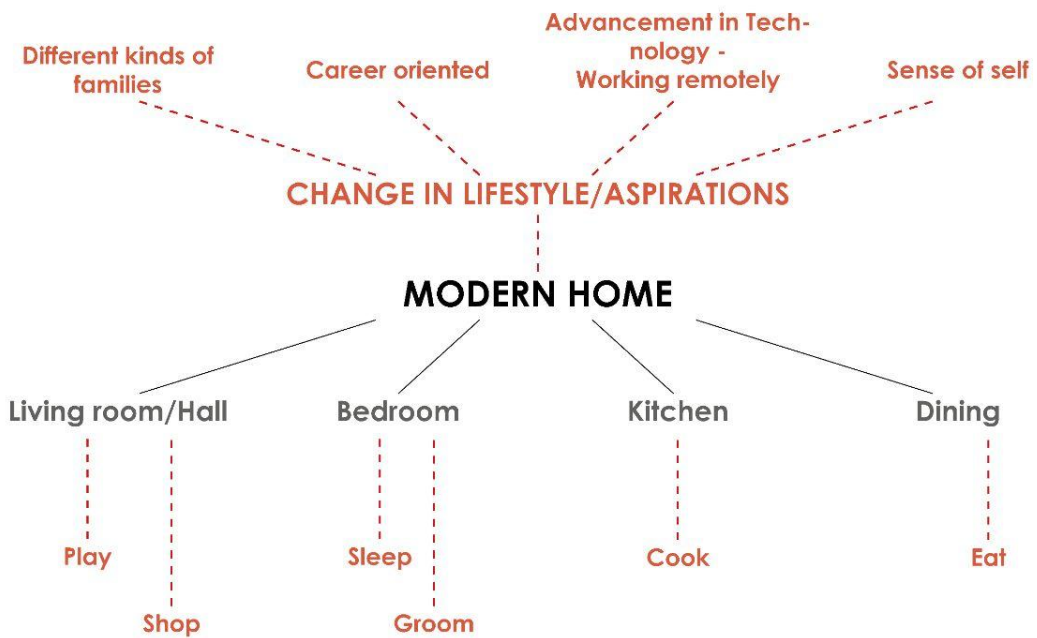


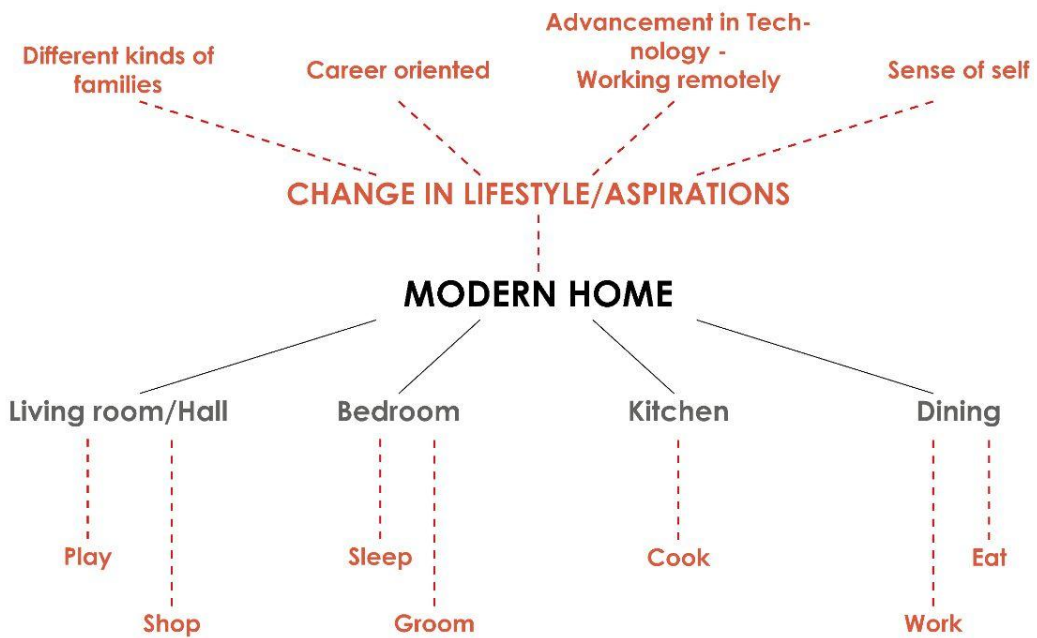












Different kinds of families

Career oriented

Advancement in Technology - Working remotely

Sense of self

CHANGE IN LIFESTYLE/ASPIRATIONS

MODERN HOME

Living room/Hall

Bedroom

Kitchen

Dining

Play

Shop

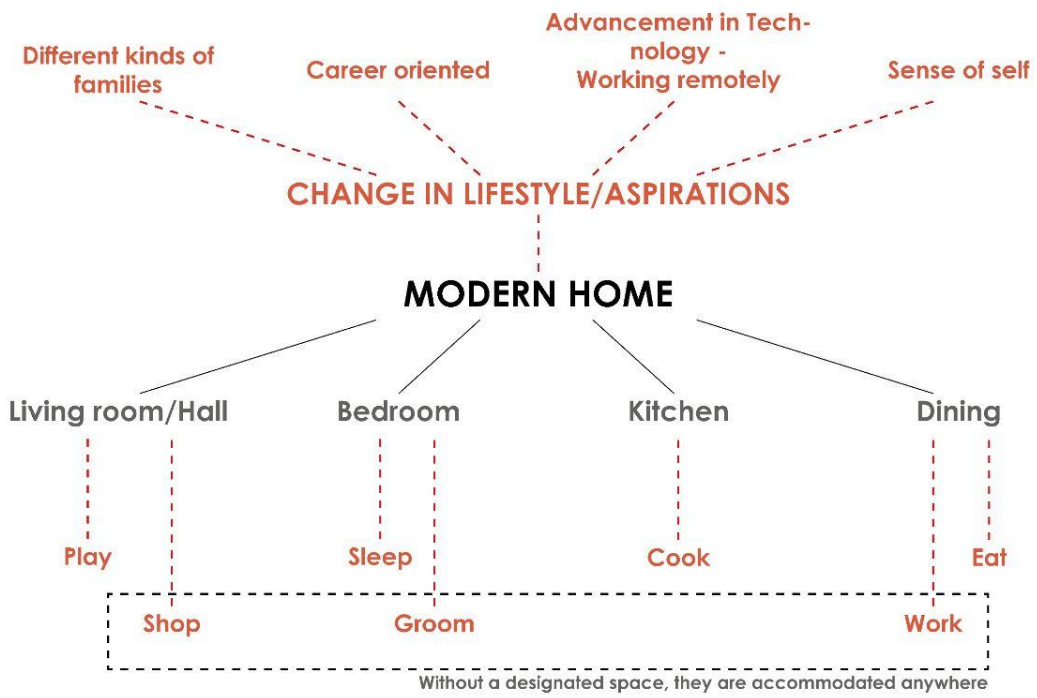
Sleep

Groom

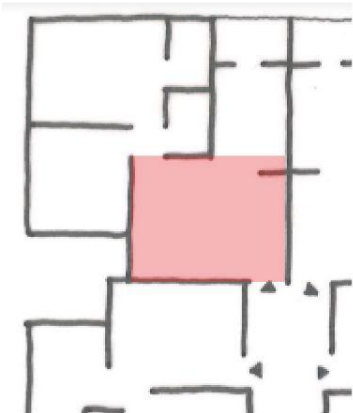
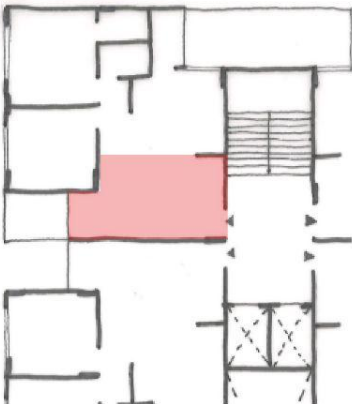
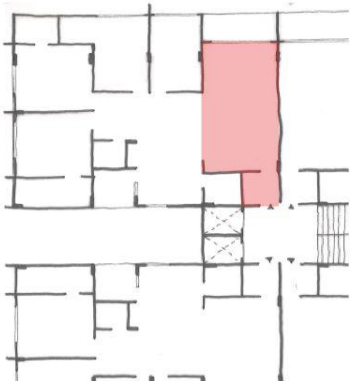
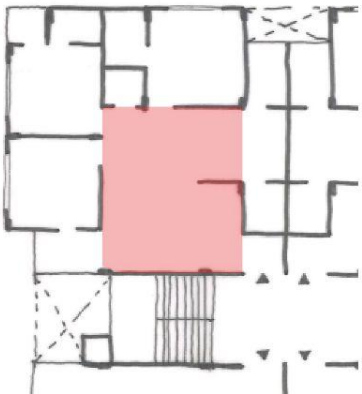
Cook

Work

Eat

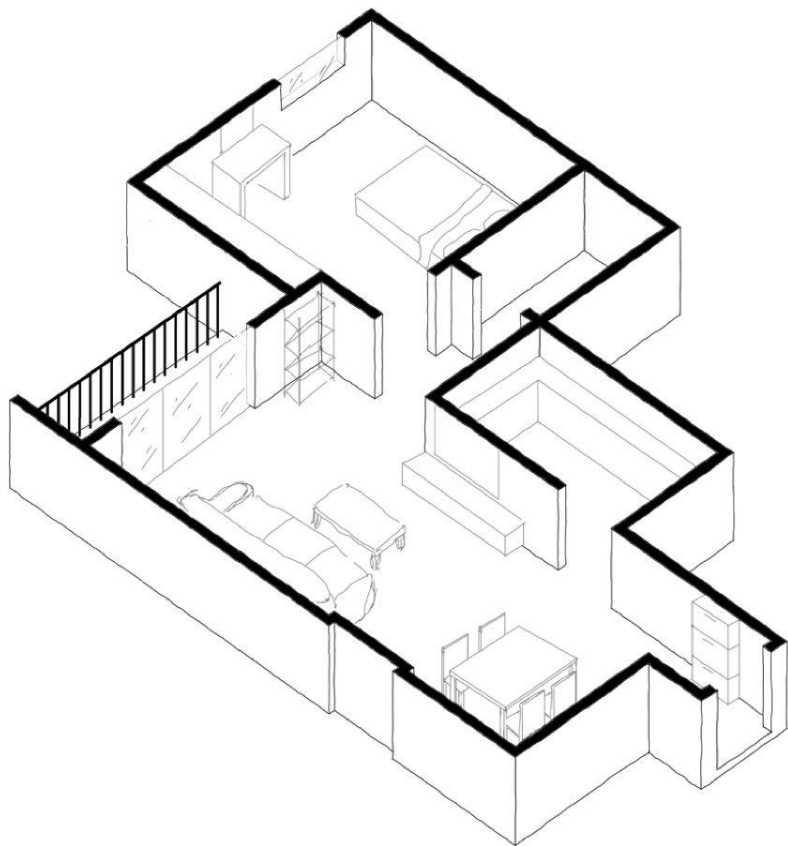


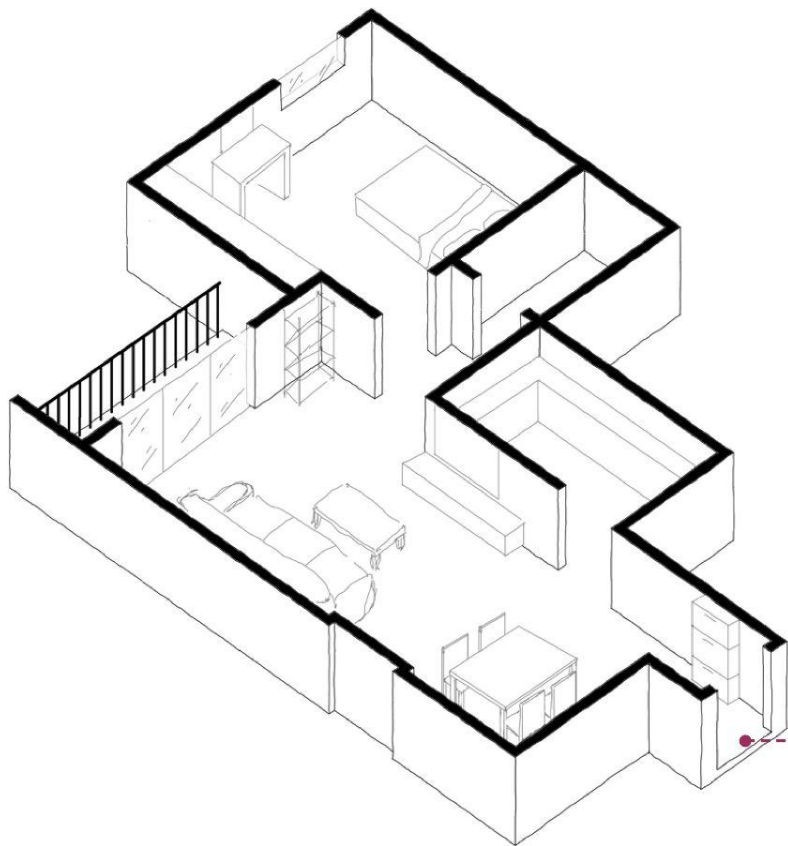
Plans of Housing Projects in Ahmedabad



CASE 1
LAKSHMI'S HOUSE

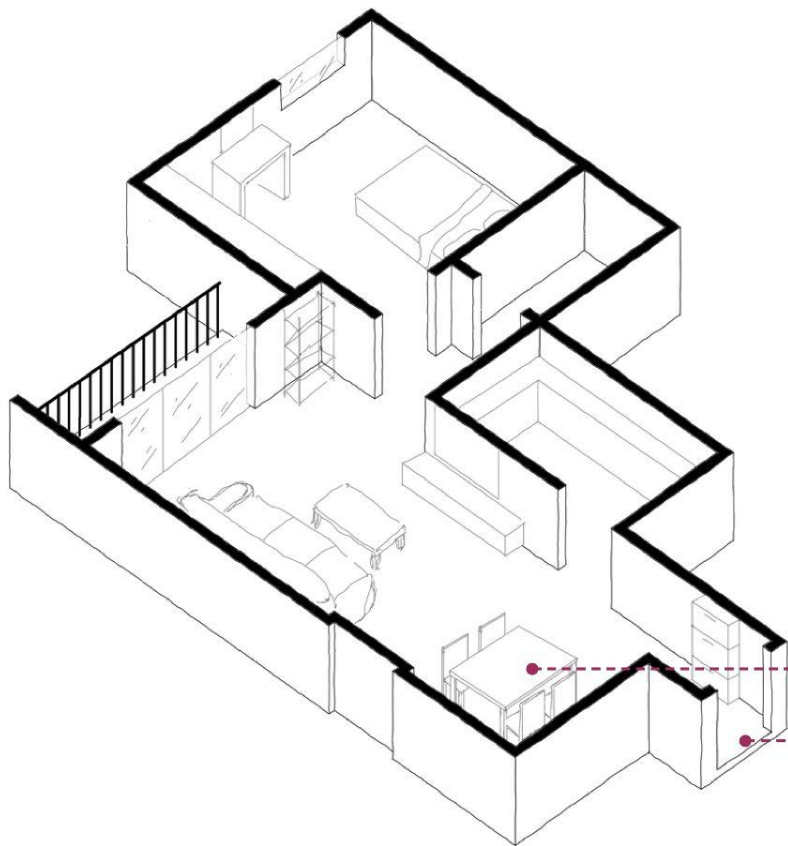






VESTIBULE

1. Space used for shoe rack

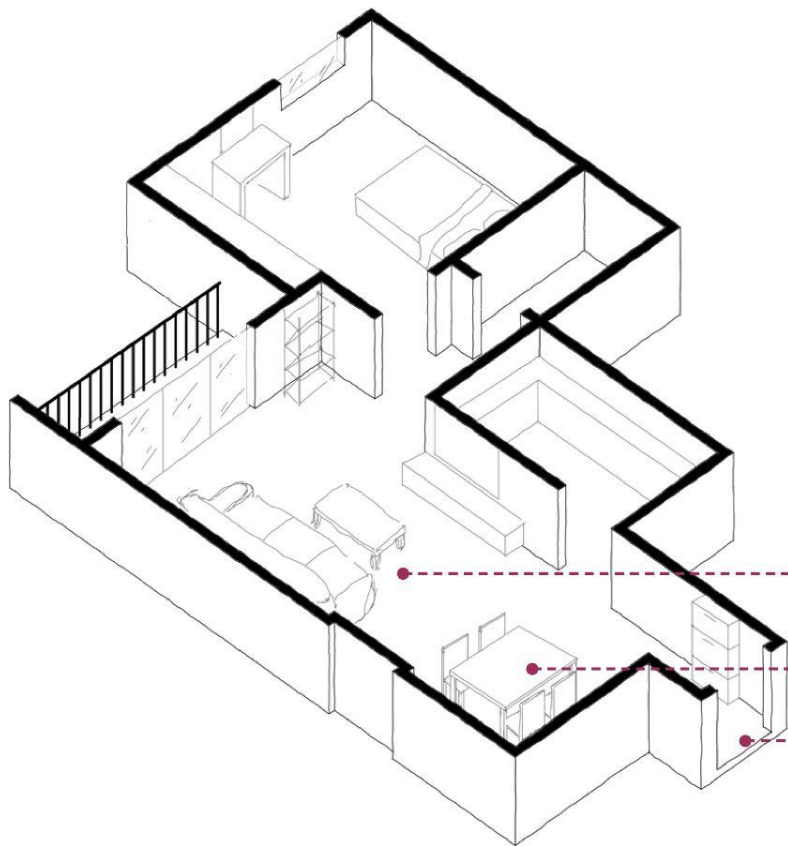


DINING AREA

- 1. Dining table used as a workspace

VESTIBULE

- 1. Space used for shoe rack



LIVING ROOM

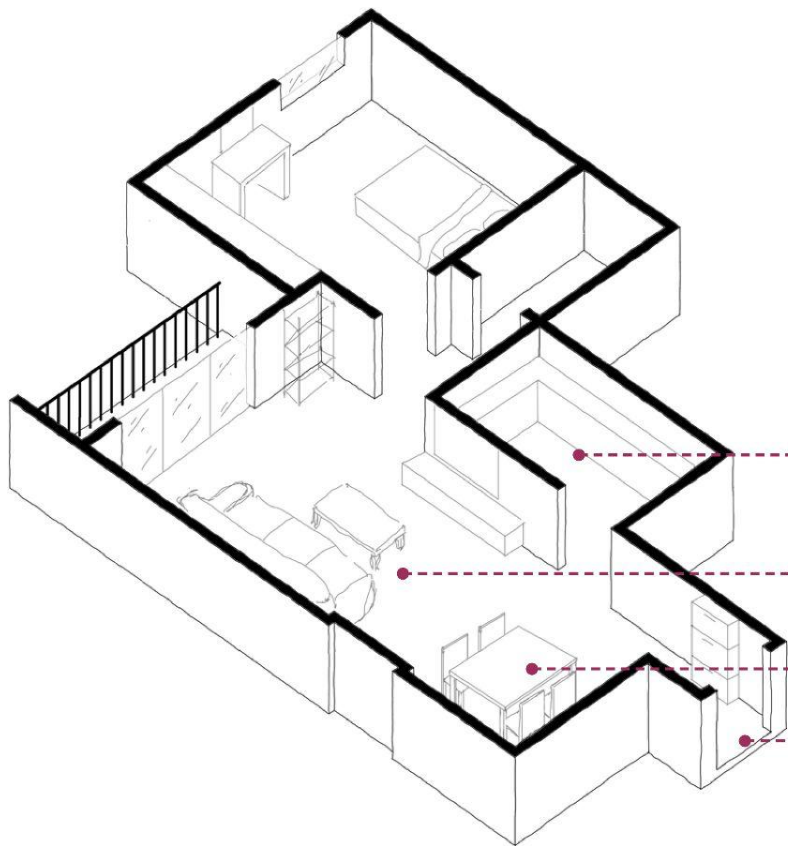
1. Large space to entertain guests
2. TV placed here

DINING AREA

1. Dining table used as a workspace

VESTIBULE

1. Space used for shoe rack



KITCHEN

- 1. Cooking during the week in the mornings and evenings
- 2. Weekends mostly take-out

LIVING ROOM

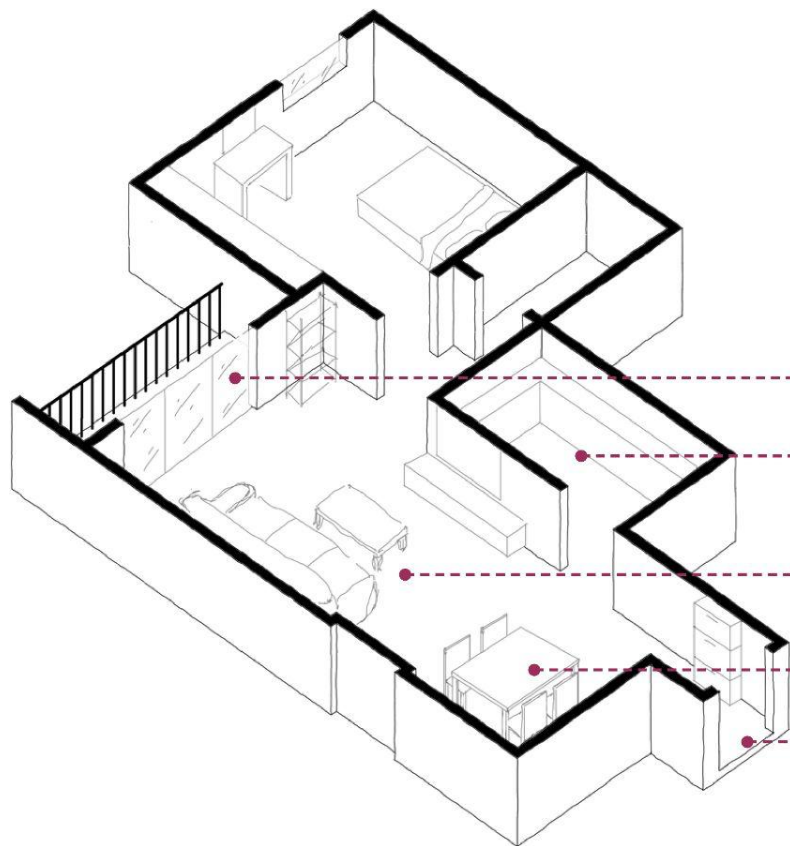
- 1. Large space to entertain guests
- 2. TV placed here

DINING AREA

- 1. Dining table used as a workspace

VESTIBULE

- 1. Space used for shoe rack



BALCONY

- 1. Semi-open space extending from the living area

KITCHEN

- 1. Cooking during the week in the mornings and evenings
- 2. Weekends mostly take-out

LIVING ROOM

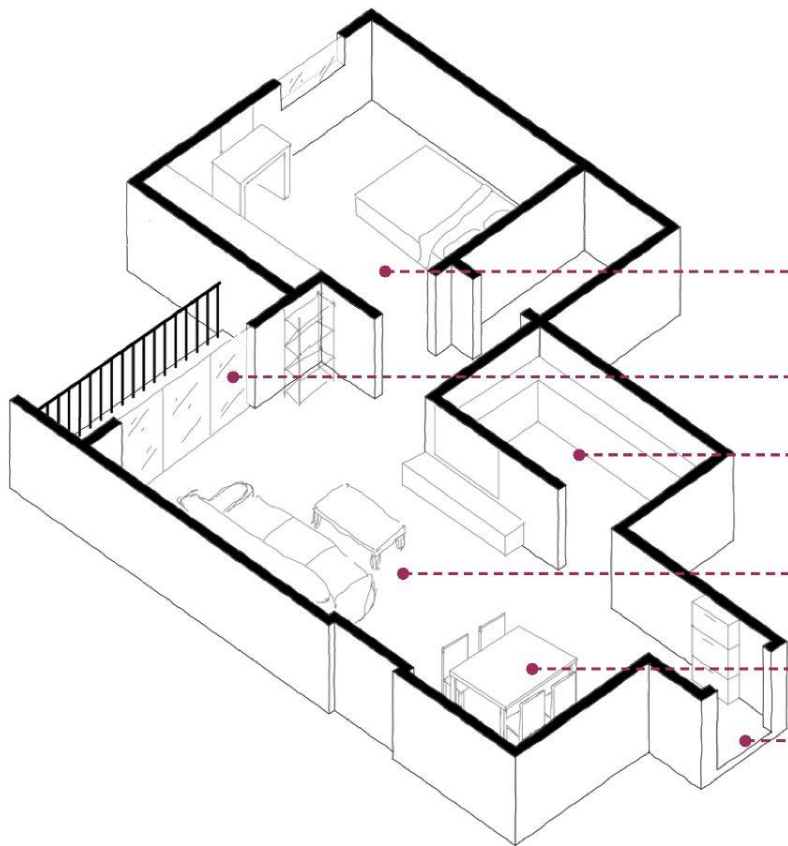
- 1. Large space to entertain guests
- 2. TV placed here

DINING AREA

- 1. Dining table used as a workspace

VESTIBULE

- 1. Space used for shoe rack



BEDROOM

- 1. Most private space for sleeping, clothes and storage

BALCONY

- 1. Semi-open space extending from the living area

KITCHEN

- 1. Cooking during the week in the mornings and evenings
- 2. Weekends mostly take-out

LIVING ROOM

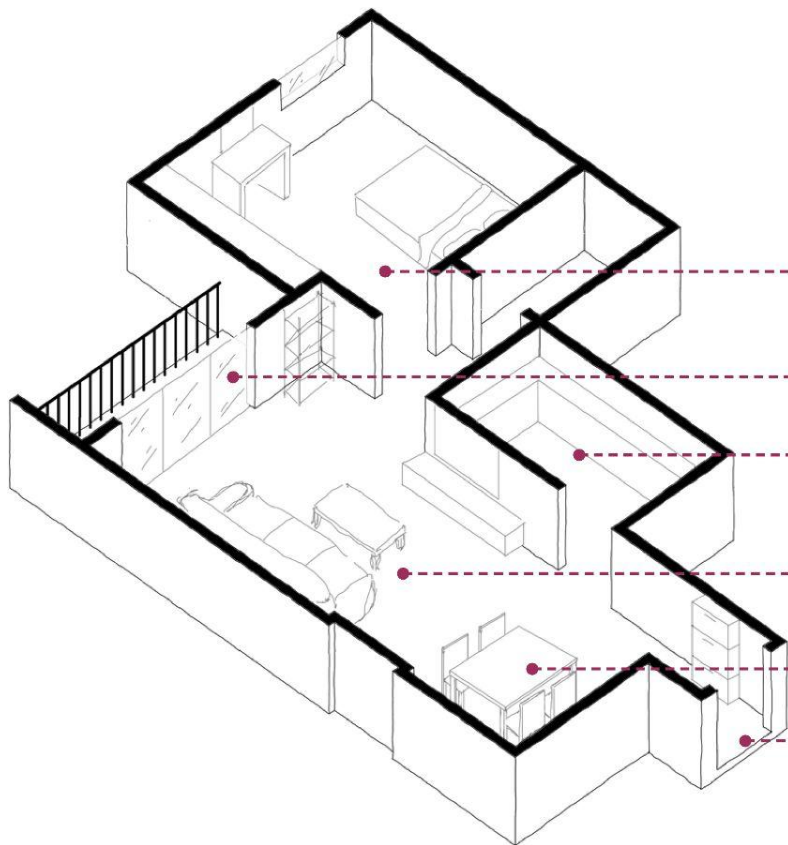
- 1. Large space to entertain guests
- 2. TV placed here

DINING AREA

- 1. Dining table used as a workspace

VESTIBULE

- 1. Space used for shoe rack



BEDROOM

1. Most private space for sleeping, clothes and storage

BALCONY

1. Semi-open space extending from the living area

KITCHEN

1. Cooking during the week in the mornings and evenings
2. Weekends mostly take-out

LIVING ROOM

1. Large space to entertain guests
2. TV placed here

DINING AREA

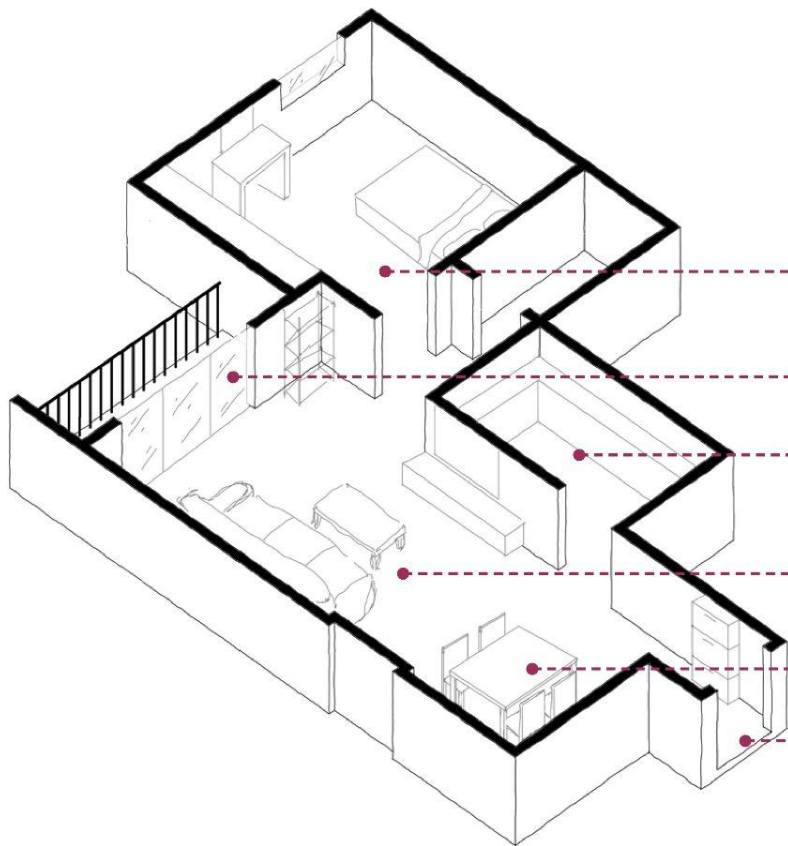
1. Dining table used as a workspace

VESTIBULE

1. Space used for shoe rack

1. Need for a more elaborate vestibule

Space to receive guests for short periods of time.
Space designed to receive packages when noone is home.



BEDROOM

- 1. Most private space for sleeping, clothes and storage

BALCONY

- 1. Semi-open space extending from the living area

KITCHEN

- 1. Cooking during the week in the mornings and evenings
- 2. Weekends mostly take-out

LIVING ROOM

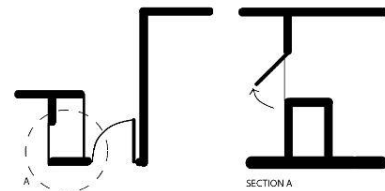
- 1. Large space to entertain guests
- 2. TV placed here

DINING AREA

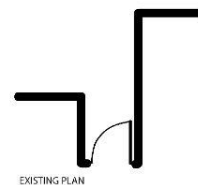
- 1. Dining table used as a workspace

VESTIBULE

- 1. Space used for shoe rack



SUGGESTED PLAN AND SECTION

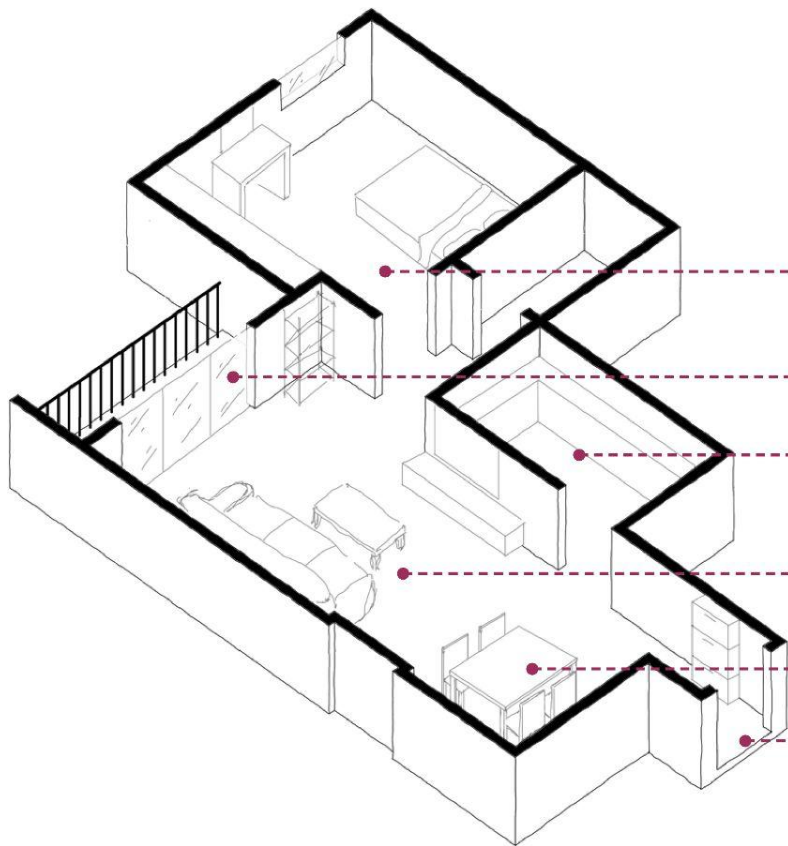


EXISTING PLAN

WALL/PLINTH MODULATION

1. Need for a more elaborate vestibule

- Space to receive guests for short periods of time.
- Space designed to receive packages when noone is home.



BEDROOM

- 1. Most private space for sleeping, clothes and storage

BALCONY

- 1. Semi-open space extending from the living area

KITCHEN

- 1. Cooking during the week in the mornings and evenings
- 2. Weekends mostly take-out

LIVING ROOM

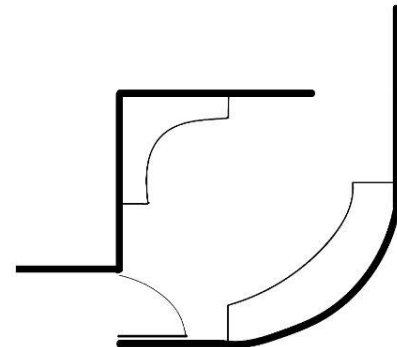
- 1. Large space to entertain guests
- 2. TV placed here

DINING AREA

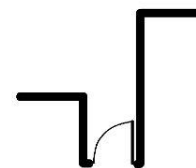
- 1. Dining table used as a workspace

VESTIBULE

- 1. Space used for shoe rack



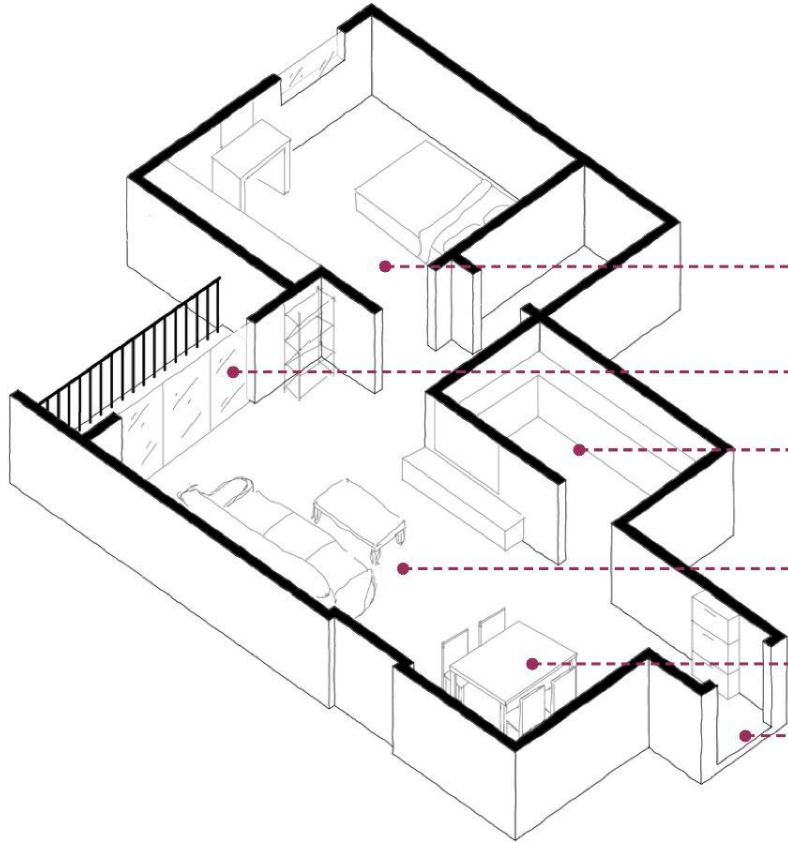
SUGGESTED PLAN



EXISTING PLAN

WALL/PLINTH MODULATION

- 1. **Need for a more elaborate vestibule**
Space to receive guests for short periods of time.
Space designed to receive packages when noone is home.



BEDROOM

- 1. Most private space for sleeping, clothes and storage

BALCONY

- 1. Semi-open space extending from the living area

KITCHEN

- 1. Cooking during the week in the mornings and evenings
- 2. Weekends mostly take-out

LIVING ROOM

- 1. Large space to entertain guests
- 2. TV placed here

DINING AREA

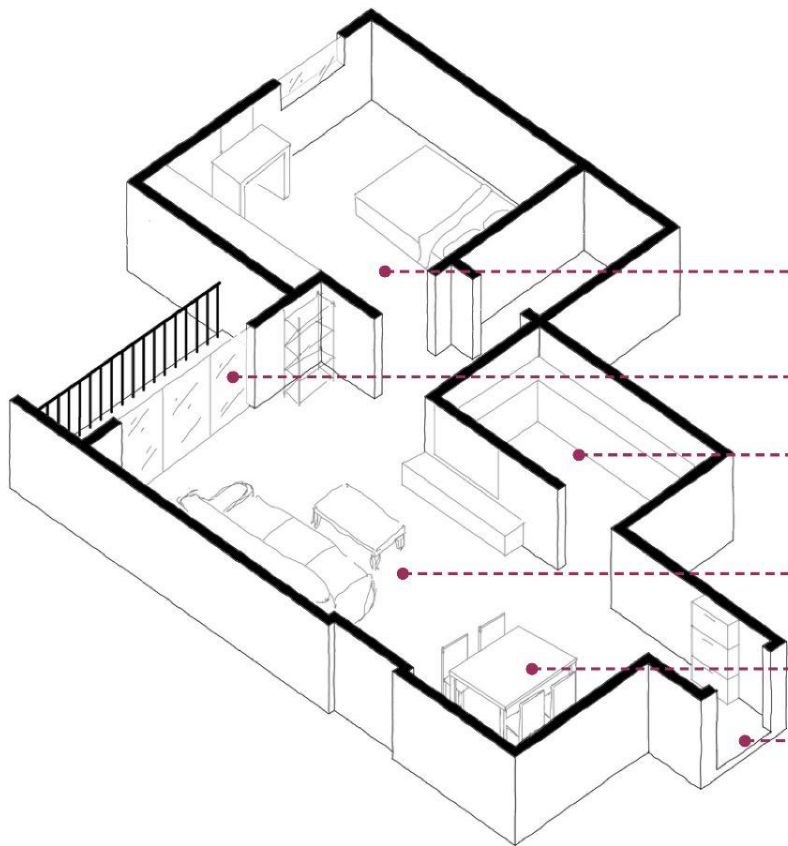
- 1. Dining table used as a workspace

VESTIBULE

- 1. Space used for shoe rack

2. **No Dining area required**
Instead having a workspace

1. **Need for a more elaborate vestibule**
Space to receive guests for short periods of time.
Space designed to receive packages when noone is home.



BEDROOM

- 1. Most private space for sleeping, clothes and storage

BALCONY

- 1. Semi-open space extending from the living area

KITCHEN

- 1. Cooking during the week in the mornings and evenings
- 2. Weekends mostly take-out

LIVING ROOM

- 1. Large space to entertain guests
- 2. TV placed here

DINING AREA

- 1. Dining table used as a workspace

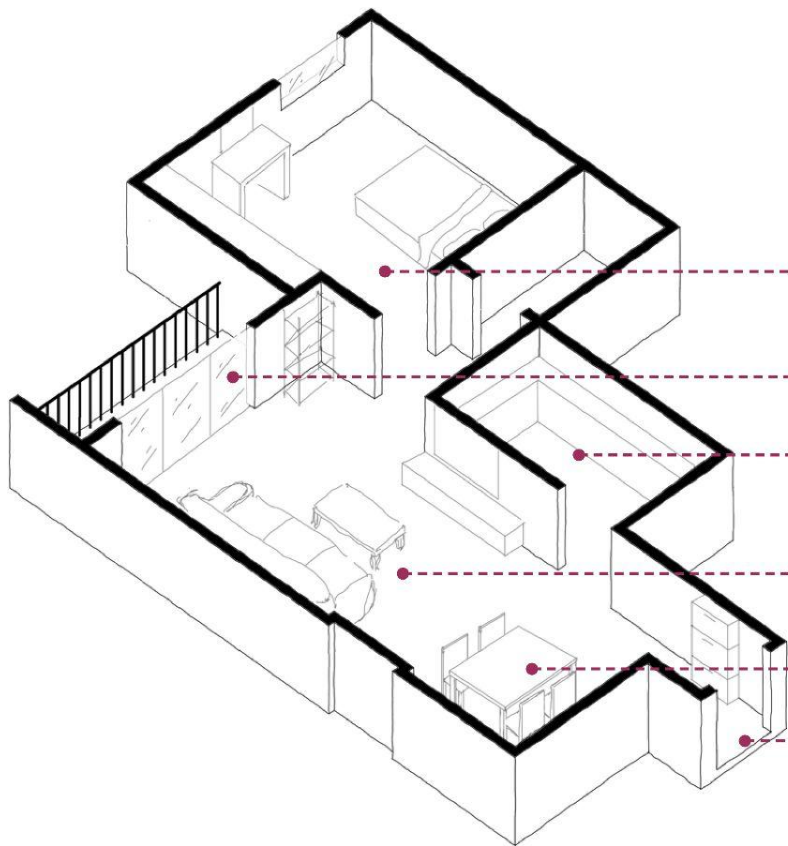
VESTIBULE

- 1. Space used for shoe rack

WORKSPACE ATTACHED TO THE BEDROOM

- 2. **No Dining area required**
Instead having a workspace

- 1. **Need for a more elaborate vestibule**
Space to receive guests for short periods of time.
Space designed to receive packages when noone is home.



BEDROOM

- 1. Most private space for sleeping, clothes and storage

6. Important space despite spending least amount of active time here

BALCONY

- 1. Semi-open space extending from the living area

KITCHEN

- 1. Cooking during the week in the mornings and evenings
- 2. Weekends mostly take-out

LIVING ROOM

- 1. Large space to entertain guests
- 2. TV placed here

WORKSPACE ATTACHED TO THE BEDROOM

DINING AREA

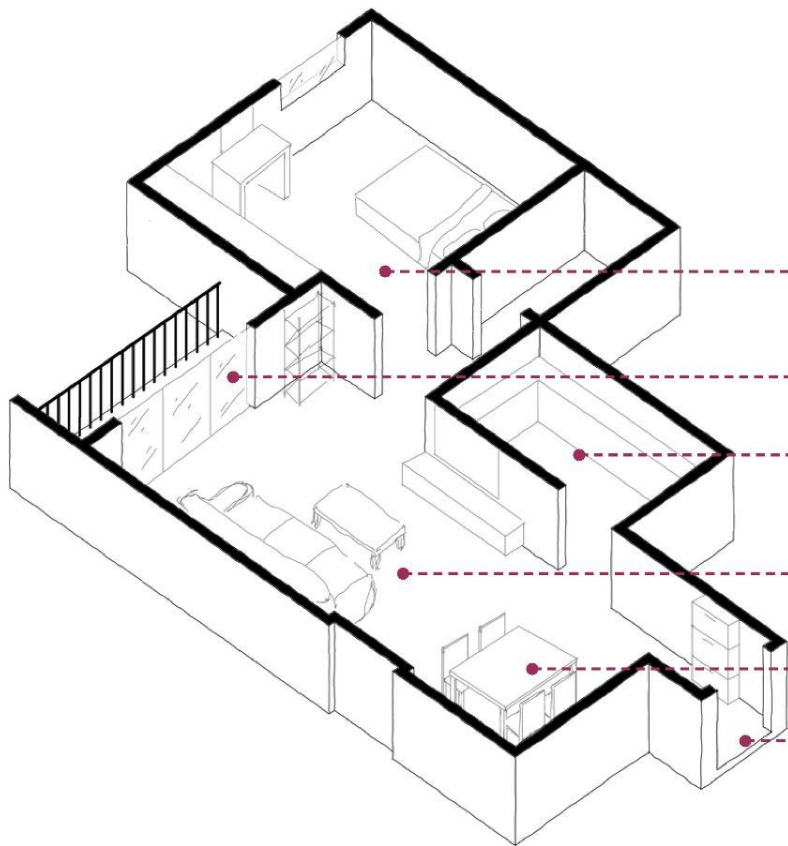
- 1. Dining table used as a workspace

2. No Dining area required
Instead having a workspace

VESTIBULE

- 1. Space used for shoe rack

1. Need for a more elaborate vestibule
Space to receive guests for short periods of time.
Space designed to receive packages when noone is home.



BEDROOM

- 1. Most private space for sleeping, clothes and storage

BALCONY

- 1. Semi-open space extending from the living area

KITCHEN

- 1. Cooking during the week in the mornings and evenings
- 2. Weekends mostly take-out

LIVING ROOM

- 1. Large space to entertain guests
- 2. TV placed here

DINING AREA

- 1. Dining table used as a workspace

VESTIBULE

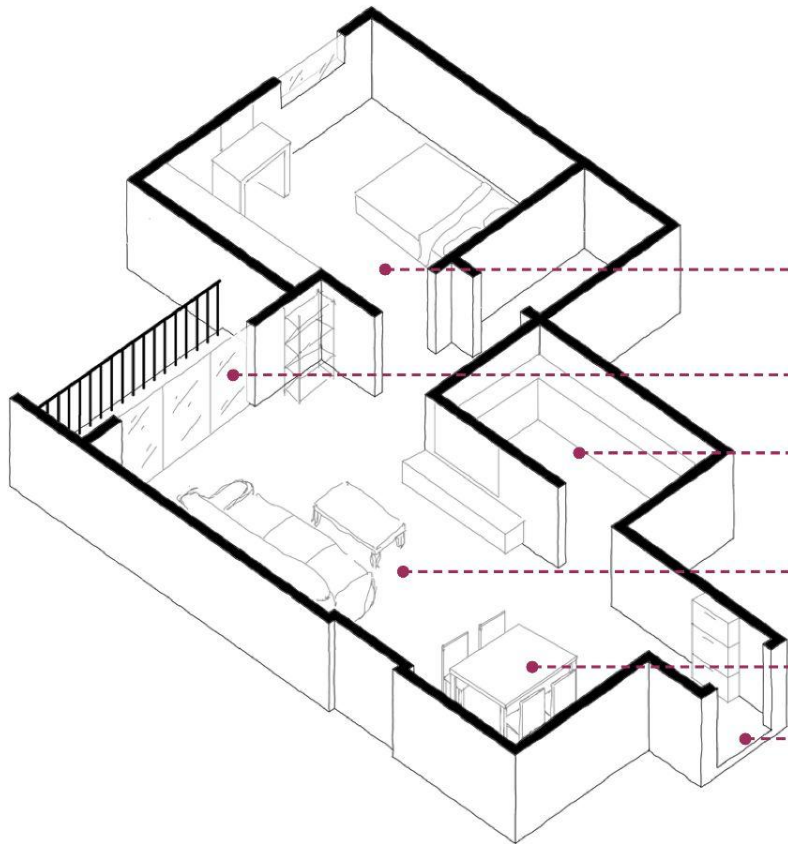
- 1. Space used for shoe rack

6. Important space despite spending least amount of active time here

WORKSPACE ATTACHED TO THE BEDROOM

2. No Dining area required
Instead having a workspace

1. Need for a more elaborate vestibule
Space to receive guests for short periods of time.
Space designed to receive packages when noone is home.



BEDROOM

- 1. Most private space for sleeping, clothes and storage

BALCONY

- 1. Semi-open space extending from the living area

KITCHEN

- 1. Cooking during the week in the mornings and evenings
- 2. Weekends mostly take-out

LIVING ROOM

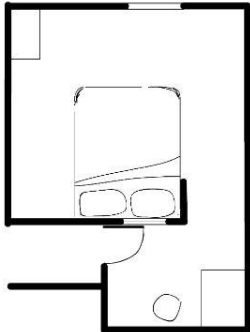
- 1. Large space to entertain guests
- 2. TV placed here

DINING AREA

- 1. Dining table used as a workspace

VESTIBULE

- 1. Space used for shoe rack



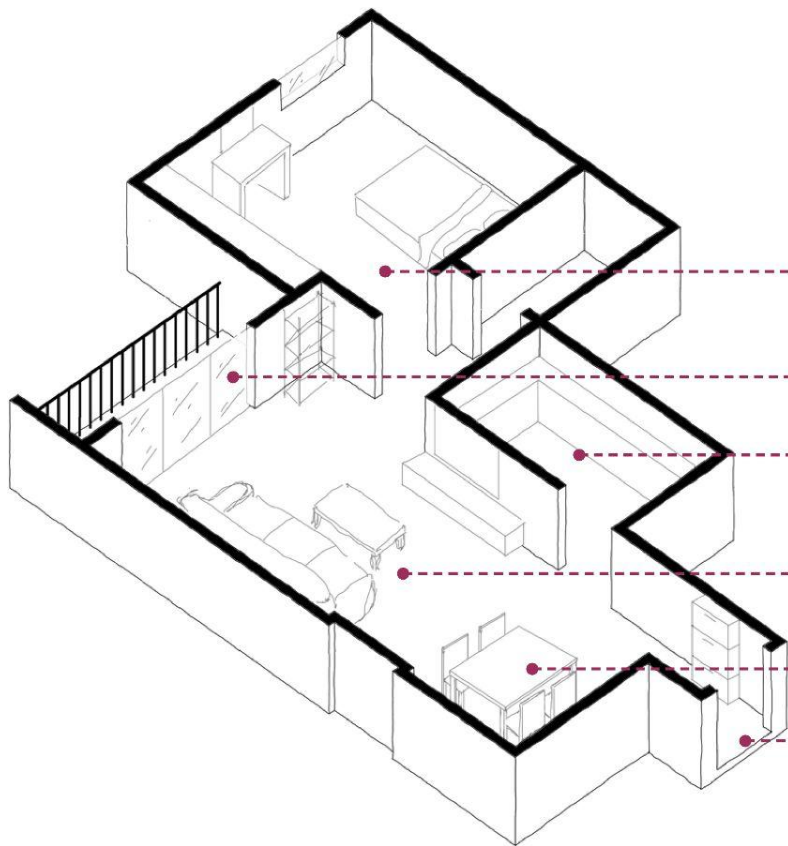
6. Important space despite spending least amount of active time here

INCREASING DEPTH AND REDUCING ACCESS - INCREASING PRIVACY

WORKSPACE ATTACHED TO THE BEDROOM

2. No Dining area required Instead having a workspace

1. Need for a more elaborate vestibule
Space to receive guests for short periods of time.
Space designed to receive packages when noone is home.



BEDROOM

1. Most private space for sleeping, clothes and storage

6. Important space despite spending least amount of active time here

BALCONY

1. Semi-open space extending from the living area

KITCHEN

1. Cooking during the week in the mornings and evenings
2. Weekends mostly take-out

LIVING ROOM

1. Large space to entertain guests
2. TV placed here

3. Living room as space used by two people only
Do not desire to host social gatherings.

DINING AREA

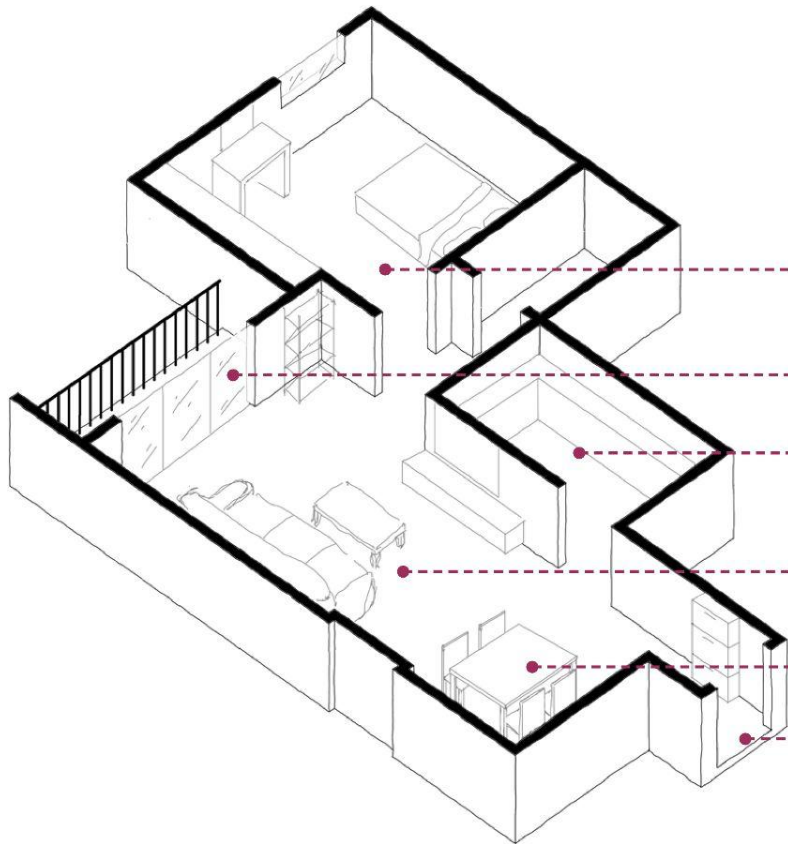
1. Dining table used as a workspace

2. No Dining area required
Instead having a workspace

VESTIBULE

1. Space used for shoe rack

1. Need for a more elaborate vestibule
Space to receive guests for short periods of time.
Space designed to receive packages when noone is home.



BEDROOM

- 1. Most private space for sleeping, clothes and storage

BALCONY

- 1. Semi-open space extending from the living area

KITCHEN

- 1. Cooking during the week in the mornings and evenings
- 2. Weekends mostly take-out

LIVING ROOM

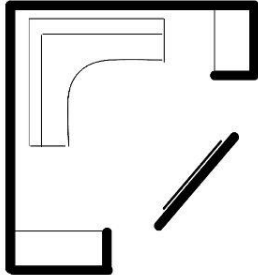
- 1. Large space to entertain guests
- 2. TV placed here

DINING AREA

- 1. Dining table used as a workspace

VESTIBULE

- 1. Space used for shoe rack



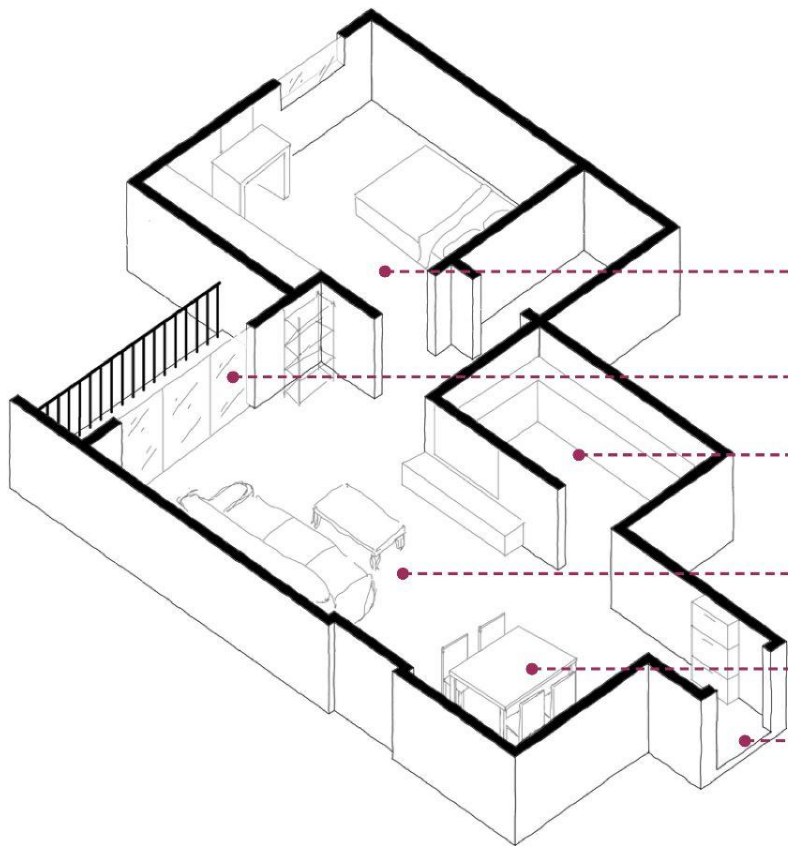
6. Important space despite spending least amount of active time here

REDUCING AREA OF THE SPACE AND MAKING INTIMATE CORNERS

3. Living room as space used by two people only
Do not desire to host social gatherings.

2. No Dining area required
Instead having a workspace

1. Need for a more elaborate vestibule
Space to receive guests for short periods of time.
Space designed to receive packages when noone is home.



BEDROOM

1. Most private space for sleeping, clothes and storage

6. Important space despite spending least amount of active time here

BALCONY

1. Semi-open space extending from the living area

KITCHEN

1. Cooking during the week in the mornings and evenings
2. Weekends mostly take-out

4. Kitchen being more of a private function

LIVING ROOM

1. Large space to entertain guests
2. TV placed here

3. Living room as space used by two people only
Do not desire to host social gatherings.

DINING AREA

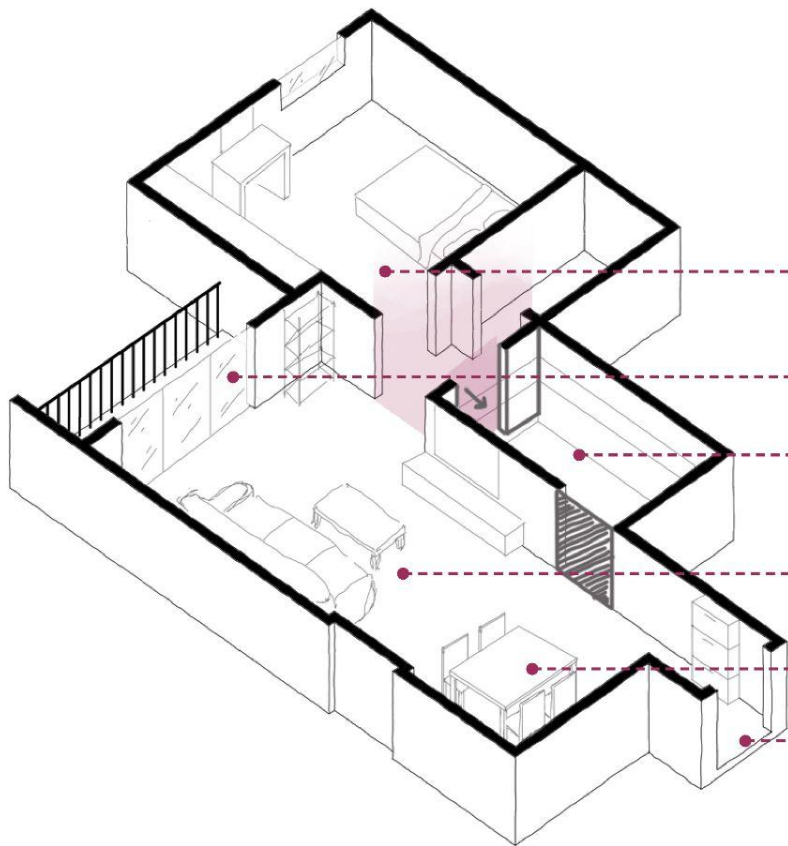
1. Dining table used as a workspace

2. No Dining area required
Instead having a workspace

VESTIBULE

1. Space used for shoe rack

1. Need for a more elaborate vestibule
Space to receive guests for short periods of time.
Space designed to receive packages when noone is home.



BEDROOM

1. Most private space for sleeping, clothes and storage

6. Important space despite spending least amount of active time here

BALCONY

1. Semi-open space extending from the living area

CHANGING ACCESS FROM A MORE PUBLIC DOMAIN TO A PRIVATE ONE

KITCHEN

1. Cooking during the week in the mornings and evenings
2. Weekends mostly take-out

4. Kitchen being more of a private function

LIVING ROOM

1. Large space to entertain guests
2. TV placed here

3. Living room as space used by two people only
Do not desire to host social gatherings.

DINING AREA

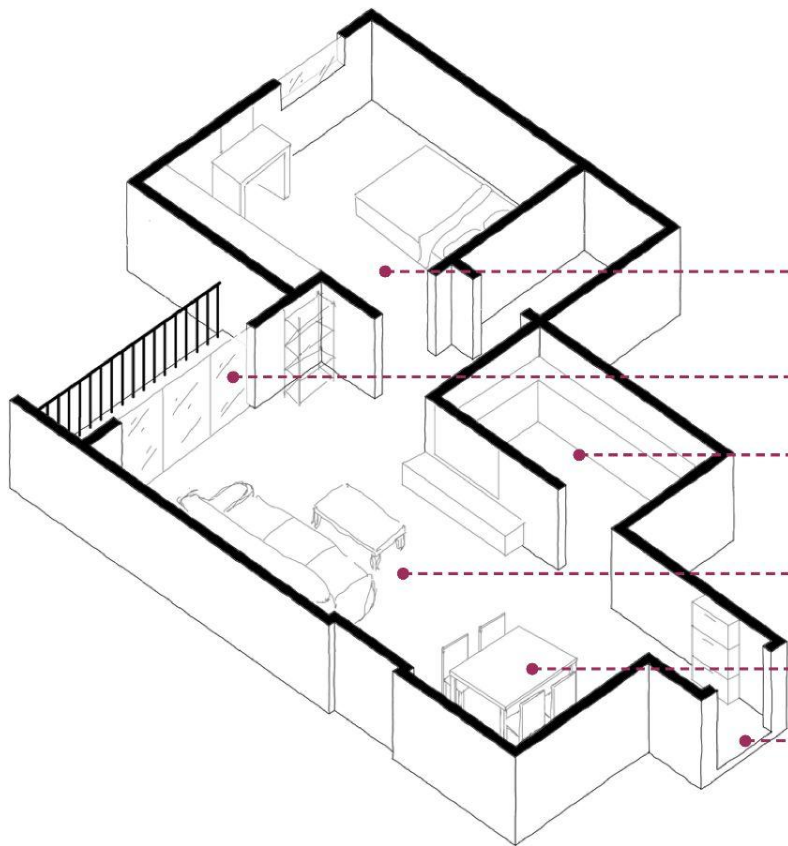
1. Dining table used as a workspace

2. No Dining area required
Instead having a workspace

VESTIBULE

1. Space used for shoe rack

1. Need for a more elaborate vestibule
Space to receive guests for short periods of time.
Space designed to receive packages when noone is home.



BEDROOM

1. Most private space for sleeping, clothes and storage

6. Important space despite spending least amount of active time here

BALCONY

1. Semi-open space extending from the living area

5. Balcony used only during winters, otherwise a dead space

KITCHEN

1. Cooking during the week in the mornings and evenings
2. Weekends mostly take-out

4. Kitchen being more of a private function

LIVING ROOM

1. Large space to entertain guests
2. TV placed here

3. Living room as space used by two people only
Do not desire to host social gatherings.

DINING AREA

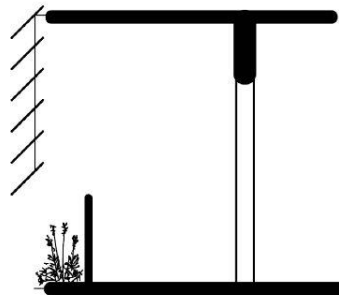
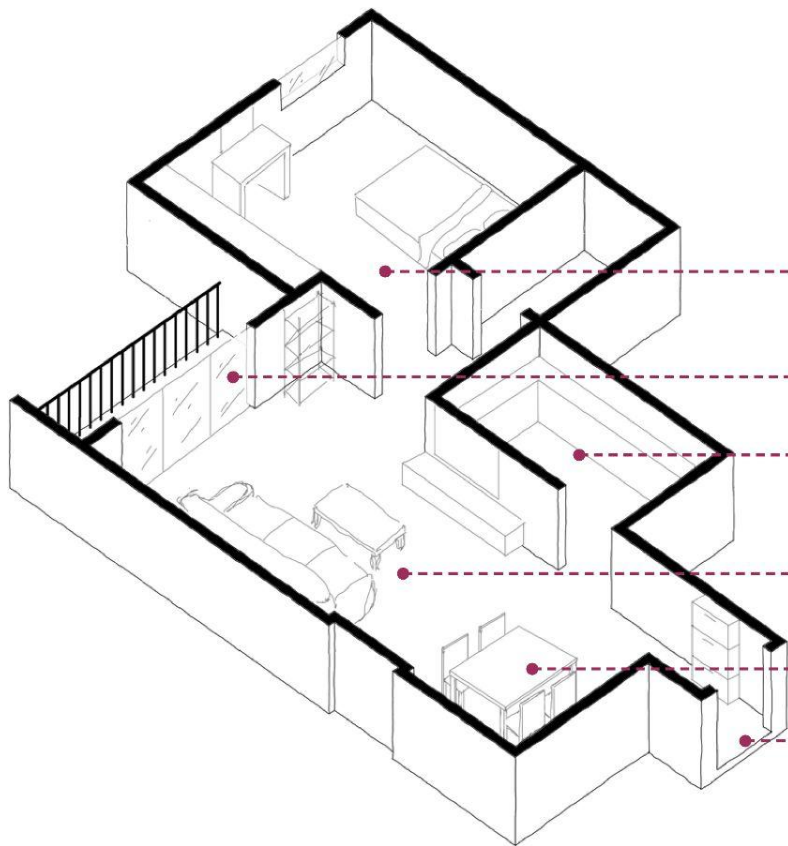
1. Dining table used as a workspace

2. No Dining area required
Instead having a workspace

VESTIBULE

1. Space used for shoe rack

1. Need for a more elaborate vestibule
Space to receive guests for short periods of time.
Space designed to receive packages when noone is home.



**DESIGNING BETTER FACADE
DETAILS FOR BETTER USE OF SEMI-
OPEN SPACE**

BEDROOM

- 1. Most private space for sleeping, clothes and storage

- 6. Important space despite spending least amount of active time here

BALCONY

- 1. Semi-open space extending from the living area

- 5. Balcony used only during winters, otherwise a dead space

KITCHEN

- 1. Cooking during the week in the mornings and evenings
- 2. Weekends mostly take-out

- 4. Kitchen being more of a private function

LIVING ROOM

- 1. Large space to entertain guests
- 2. TV placed here

- 3. Living room as space used by two people only
Do not desire to host social gatherings.

DINING AREA

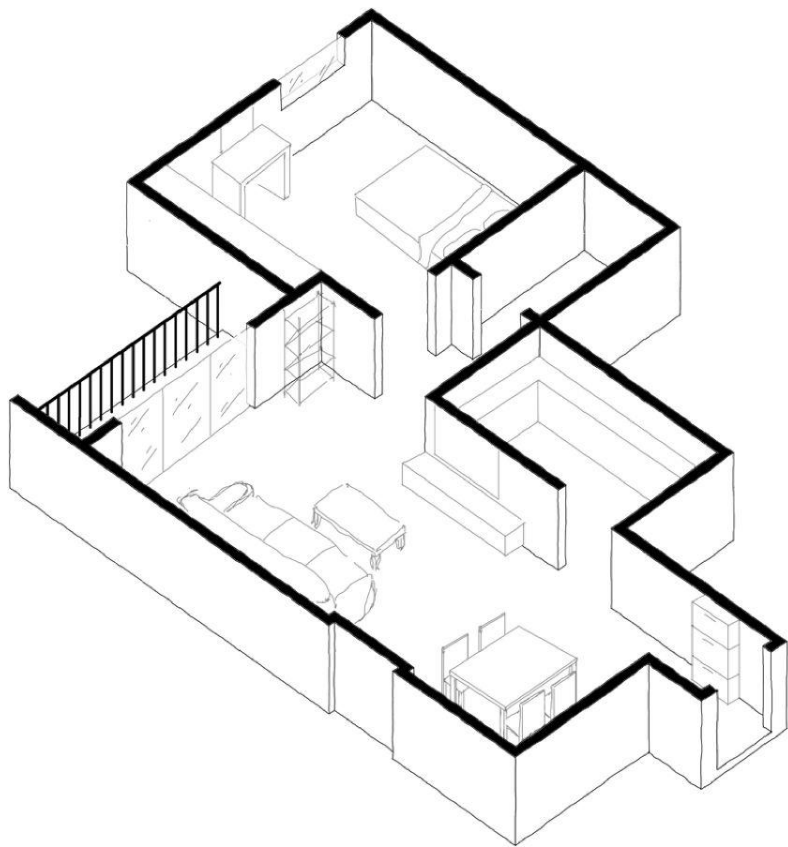
- 1. Dining table used as a workspace

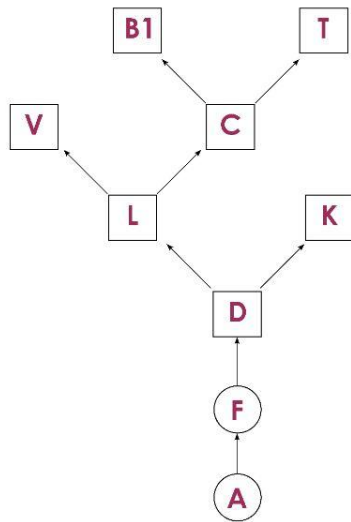
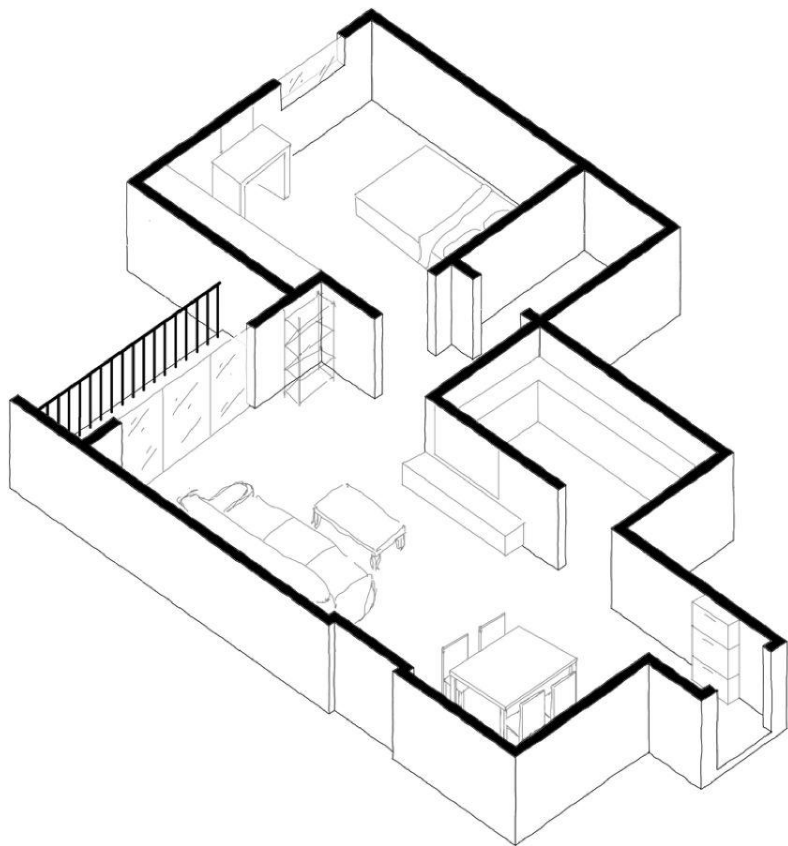
- 2. No Dining area required
Instead having a workspace

VESTIBULE

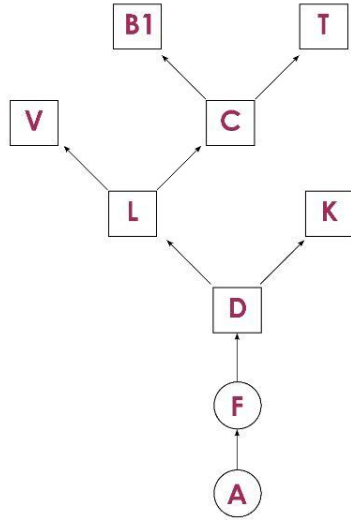
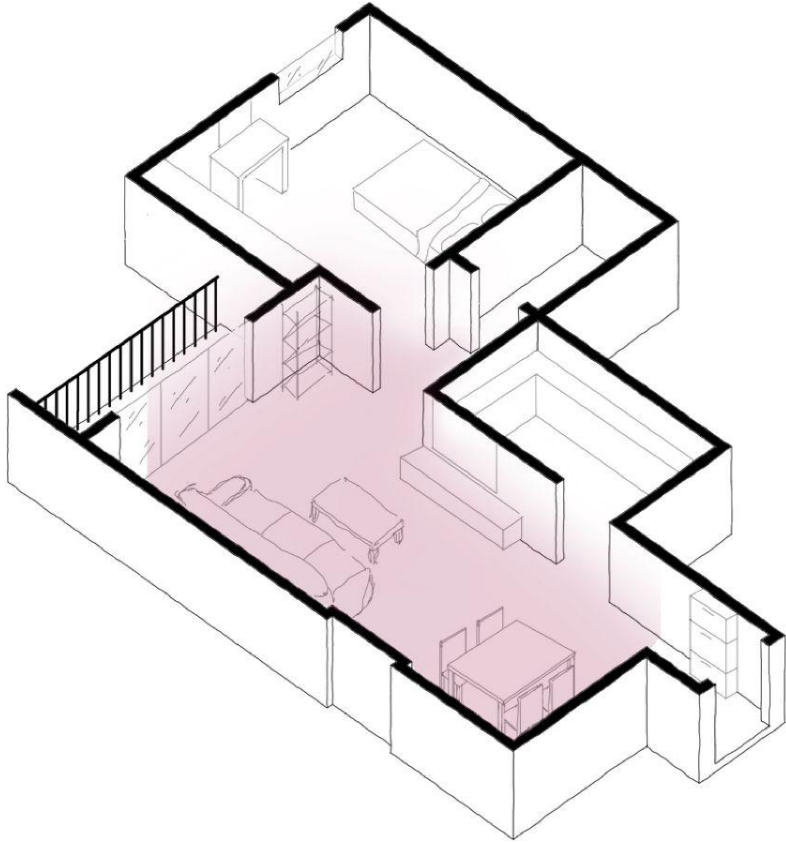
- 1. Space used for shoe rack

- 1. Need for a more elaborate vestibule
Space to receive guests for short periods of time.
Space designed to receive packages when noone is home.



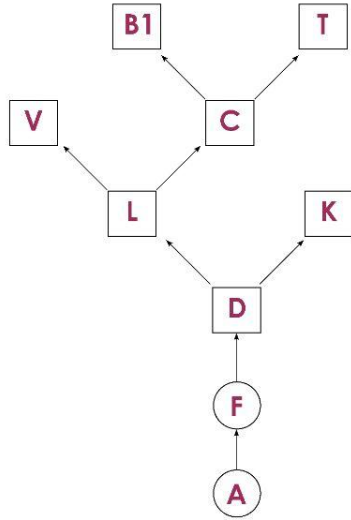
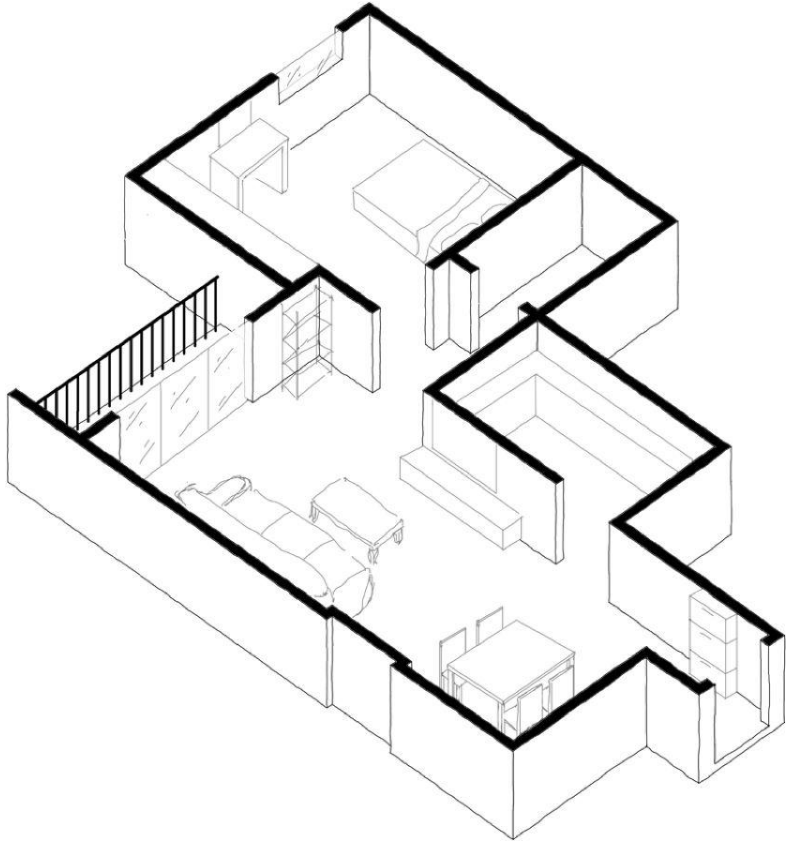


1. J-GRAPH OF EXISTING HOME



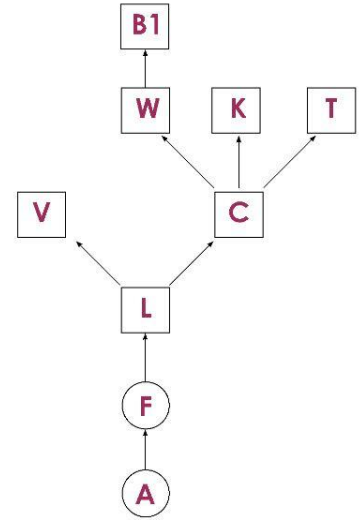
1. J-GRAPH OF EXISTING HOME

Same level of integration for the different spaces. Kitchen, living and dining area becomes the most public spaces in the house.

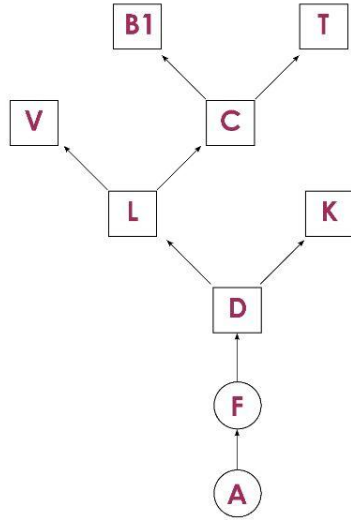
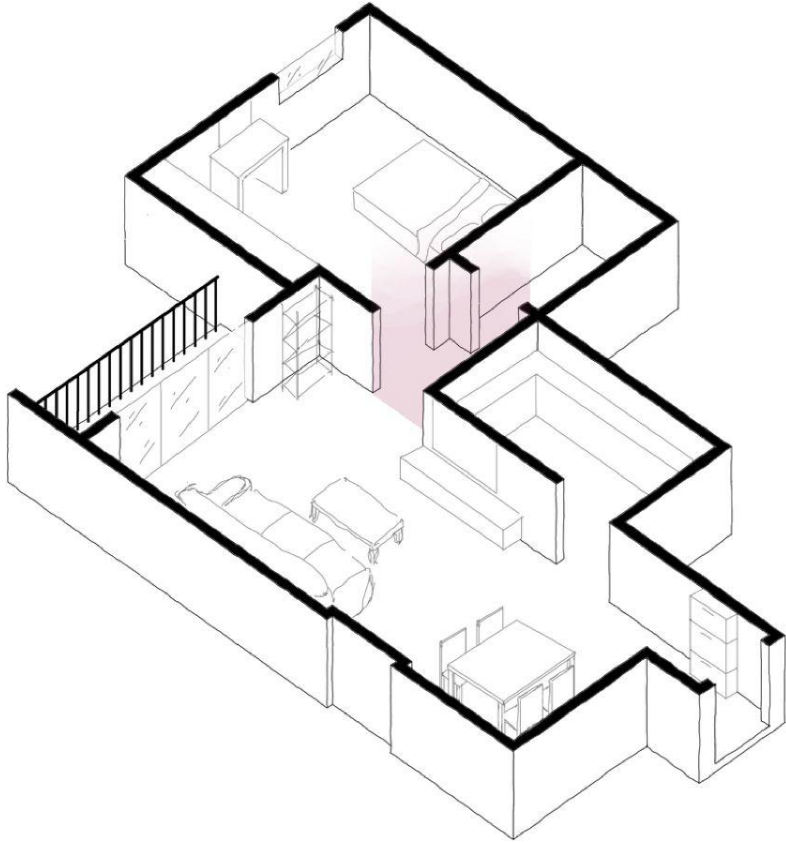


1. J-GRAPH OF EXISTING HOME

Same level of integration for the different spaces. Kitchen, living and dining area becomes the most public spaces in the house.

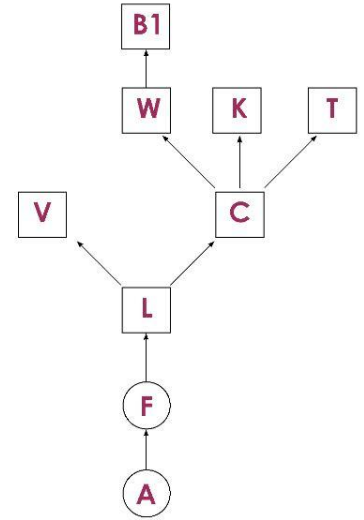


2. J-GRAPH OF THE DESIRED HOME



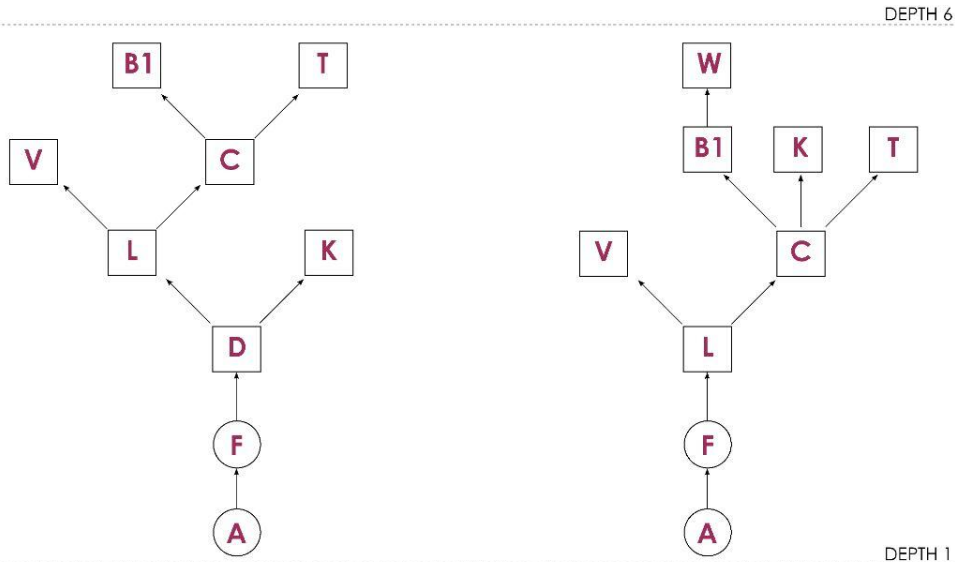
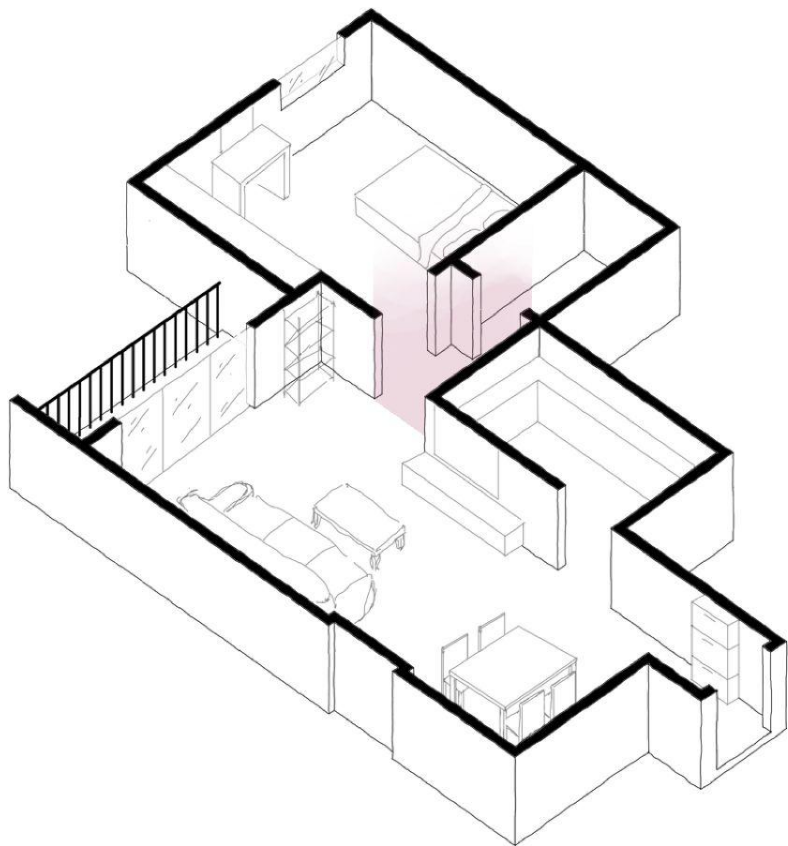
1. J-GRAPH OF EXISTING HOME

Same level of integration for the different spaces. Kitchen, living and dining area becomes the most public spaces in the house.



2. J-GRAPH OF THE DESIRED HOME

Inner corridor becomes the most integrated part of the house. Living with vestibule is the most public space in the house and kitchen becomes part of the private.



1. J-GRAPH OF EXISTING HOME

Same level of integration for the different spaces. Kitchen, living and dining area becomes the most public spaces in the house.

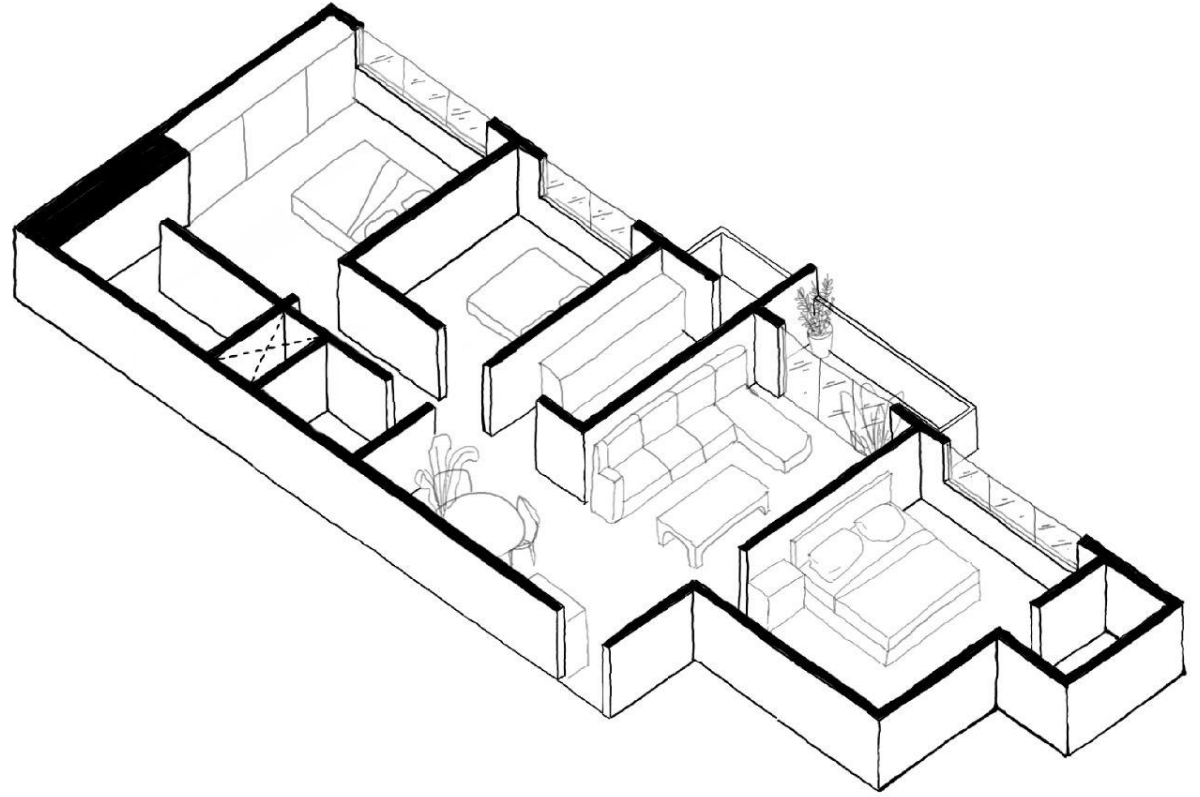
2. J-GRAPH OF THE DESIRED HOME

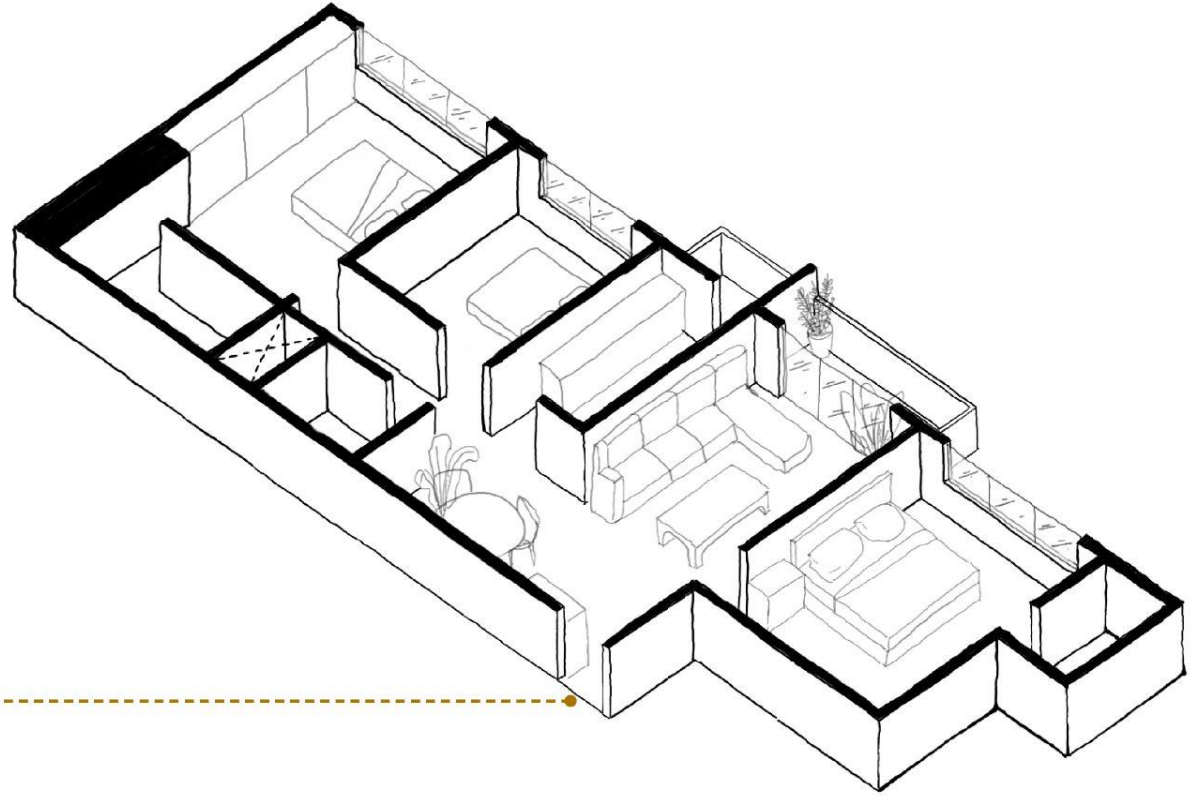
Inner corridor becomes the most integrated part of the house. Living with vestibule is the most public space in the house and kitchen becomes part of the private.

CASE 2

HEENA'S HOUSE





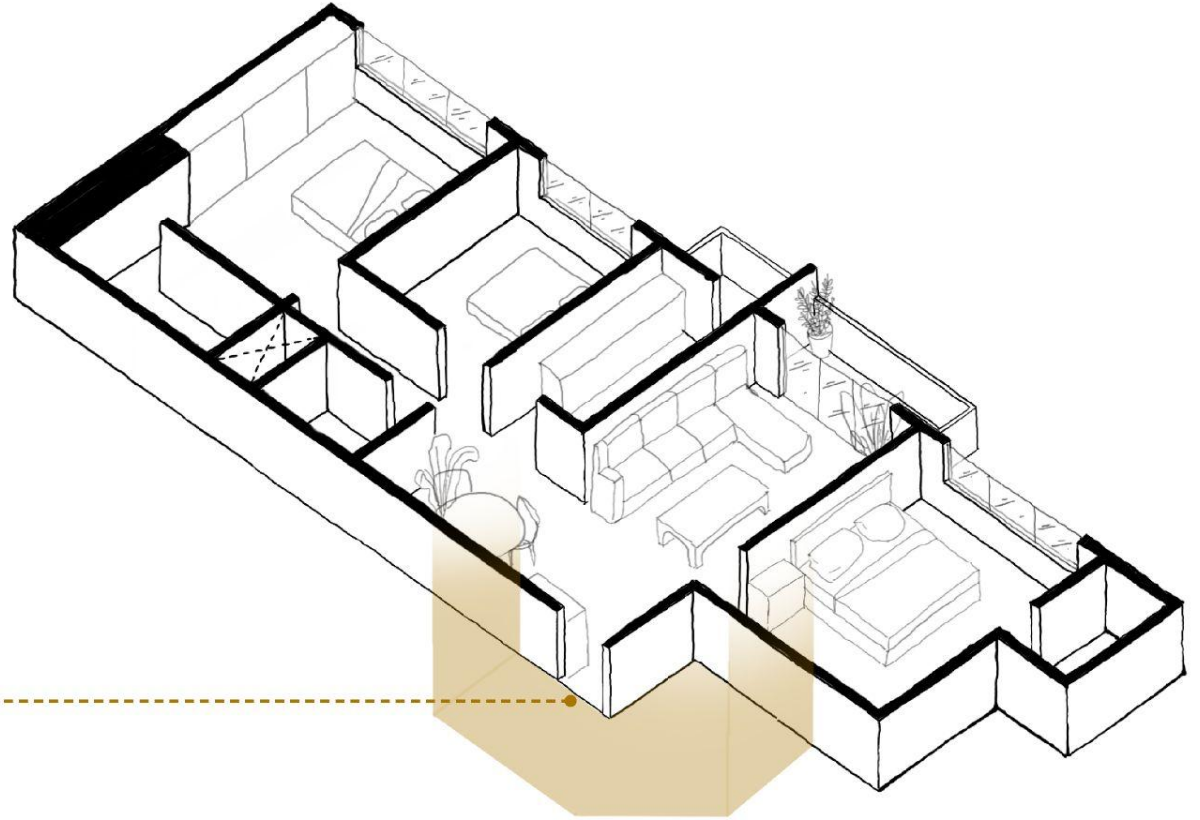


1. Need for a more elaborate vestibule

Space to receive guests for short periods of time.
Space designed to receive packages when no one is home.

ENTRANCE

- 1. Space directly opens into the living room
- 2. Shoe rack kept at the side

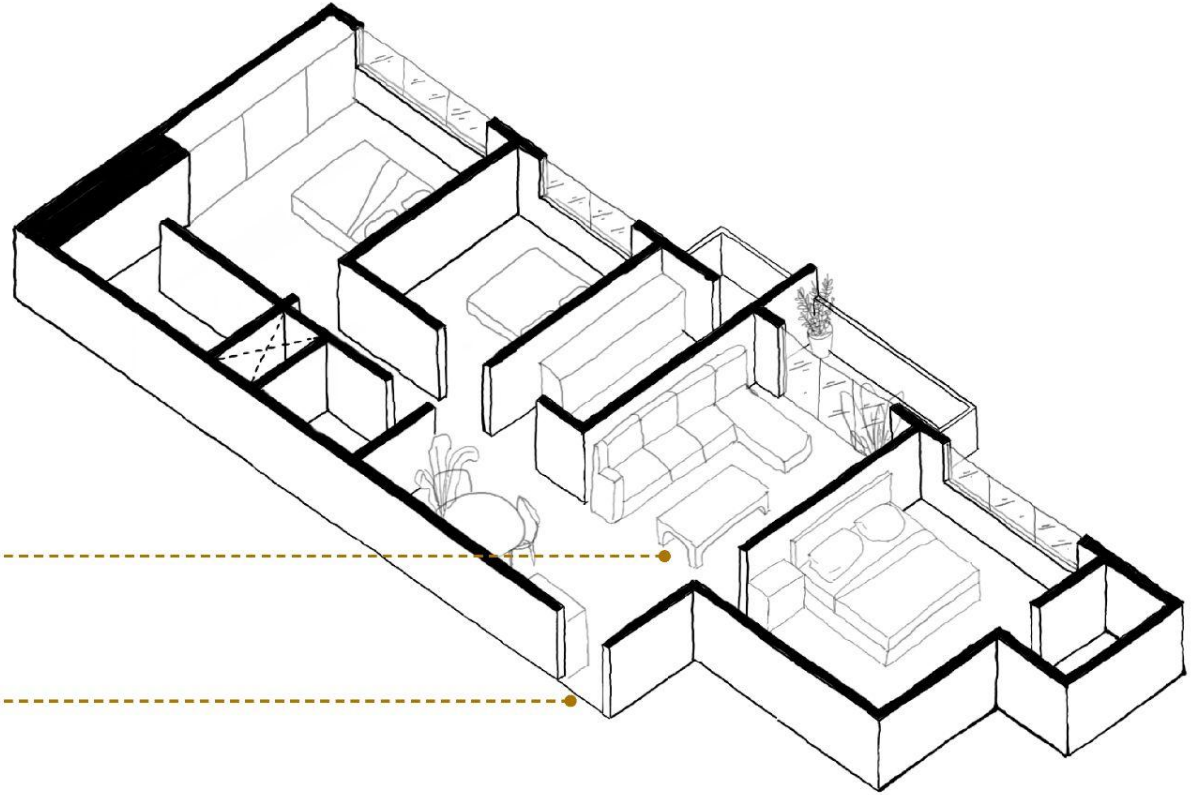


DEFINING THE VOLUME

1. Need for a verandah — — —
Space to decorate and own
yet part of the common area.
Need for sense of community

- 1. Space directly opens into the living room
- 2. Shoe rack kept at the side

ENTRANCE

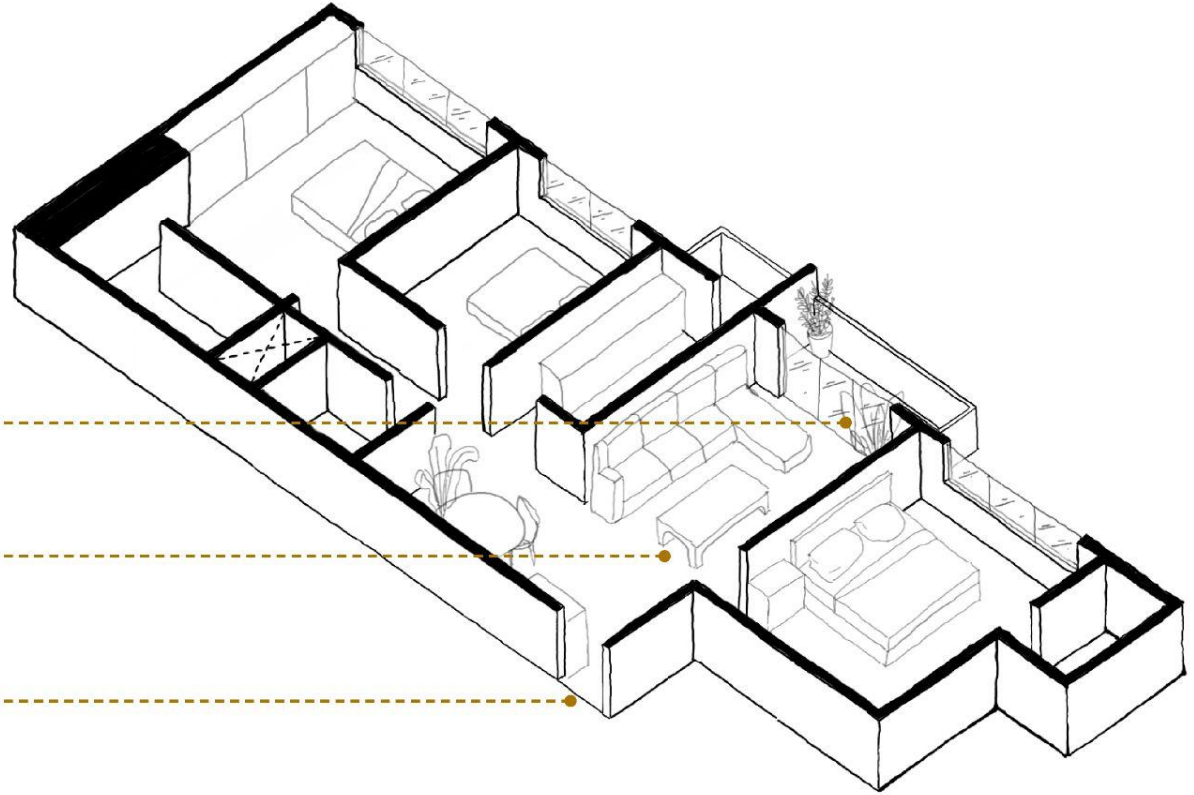


LIVING ROOM

- 1. Most of the time spent here
- 2. Large social gatherings hosted here

ENTRANCE

- 1. Space directly opens into the living room
- 2. Shoe rack kept at the side



BALCONY

- 1. Small balcony used to display plants

LIVING ROOM

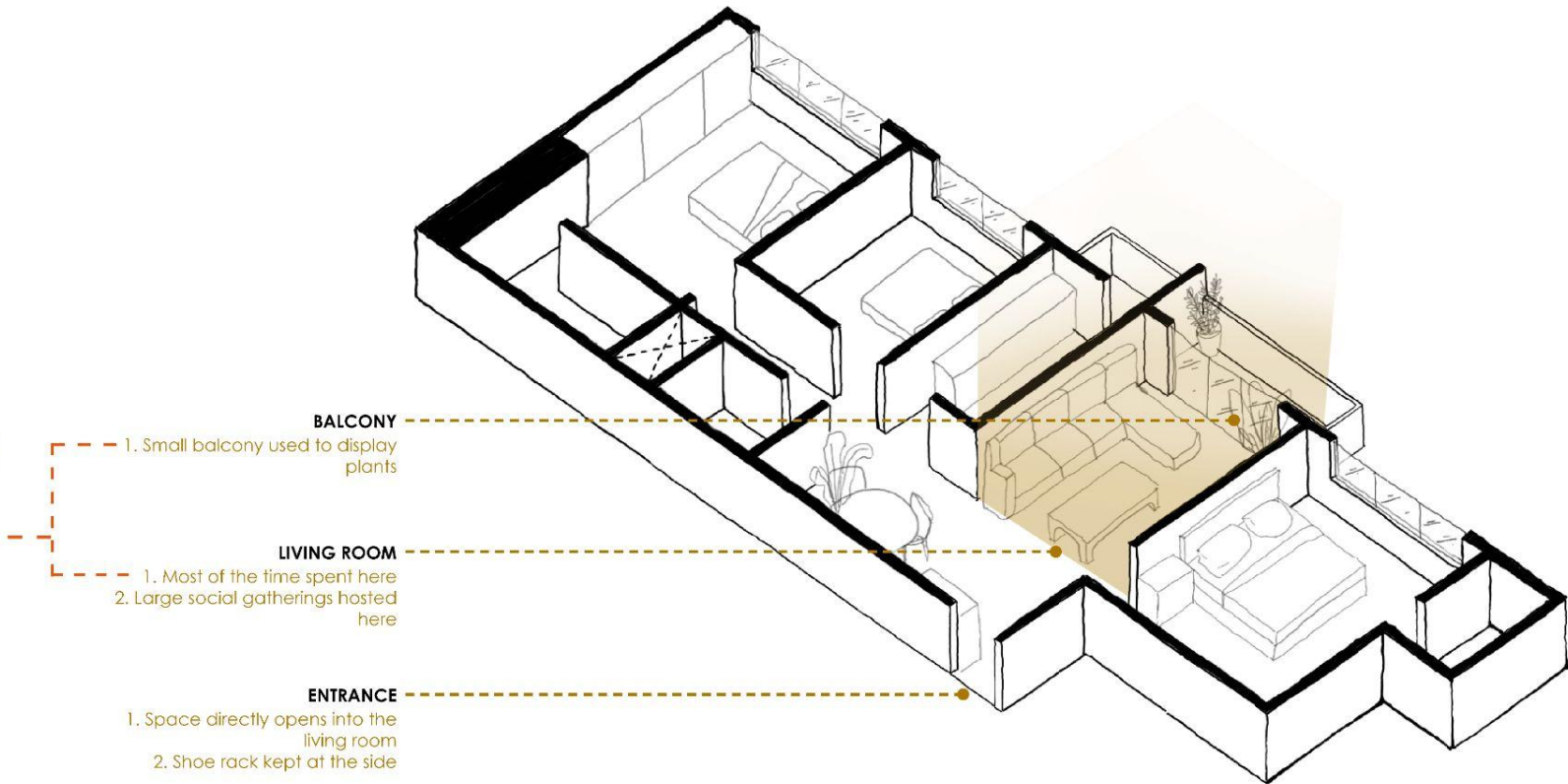
- 1. Most of the time spent here
- 2. Large social gatherings hosted here

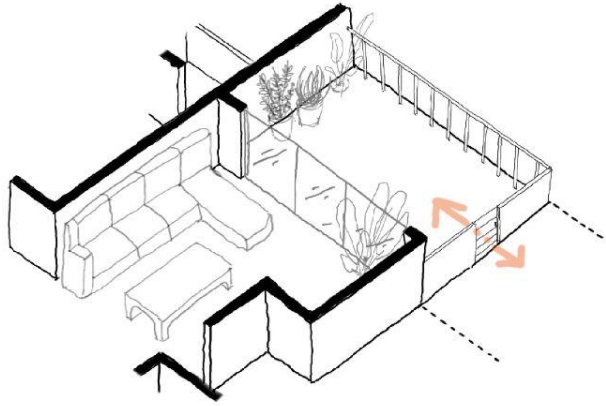
ENTRANCE

- 1. Space directly opens into the living room
- 2. Shoe rack kept at the side

**LIVING ROOM AS CLOSED
AND EXTENDED, SHARED
BALCONY AS OPEN**

**Need for space to host
large social gatherings**





**LIVING ROOM AS CLOSED
AND EXTENDED, SHARED
BALCONY AS OPEN**

**Need for space to host
large social gatherings**

BALCONY

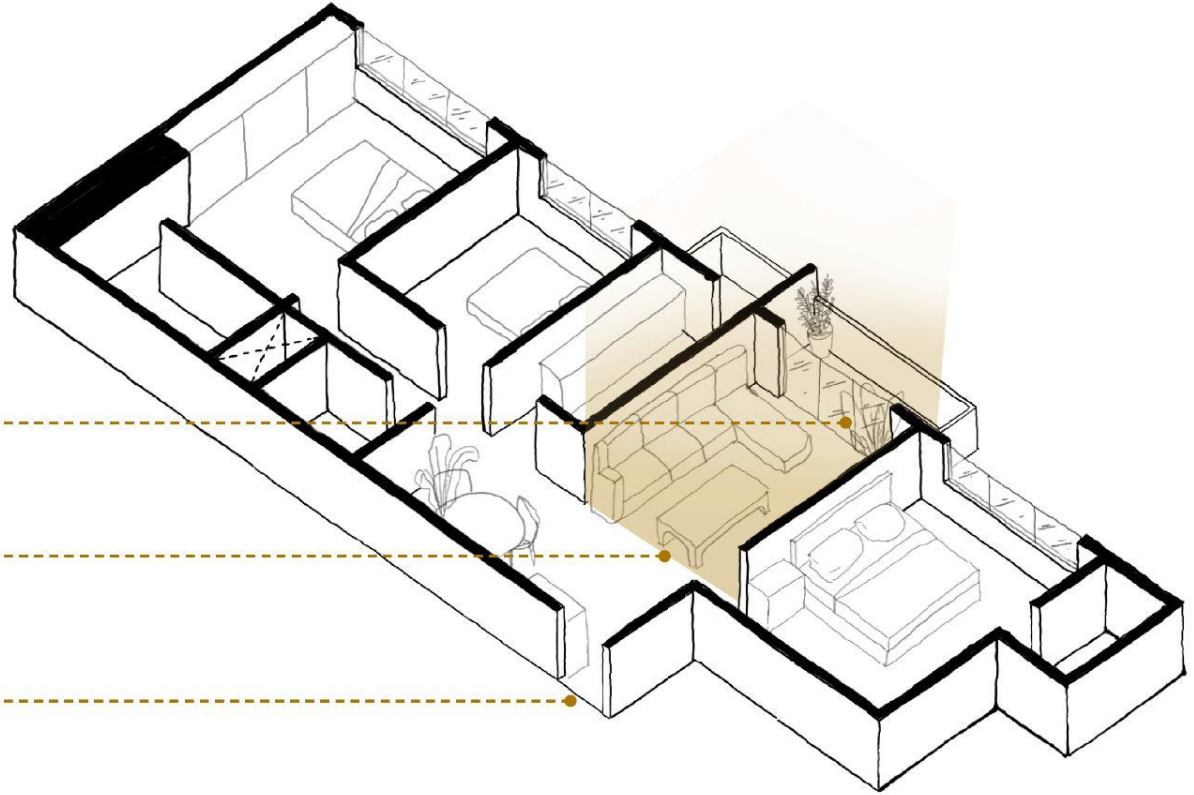
- 1. Small balcony used to display plants

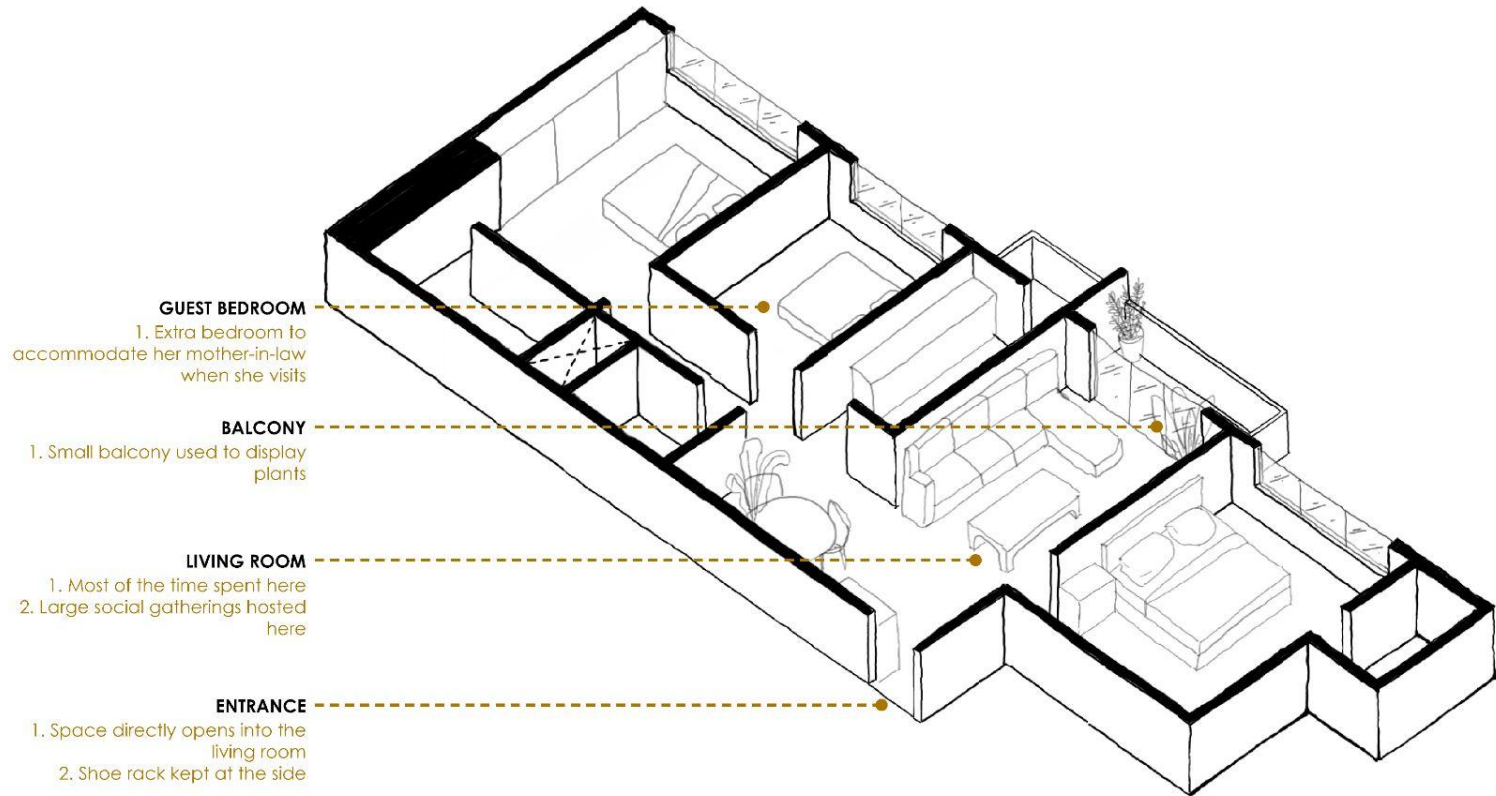
LIVING ROOM

- 1. Most of the time spent here
- 2. Large social gatherings hosted here

ENTRANCE

- 1. Space directly opens into the living room
- 2. Shoe rack kept at the side





**FLEXIBLE WALLS BETWEEN
LIVING ROOM AND GUEST
BEDROOM**

GUEST BEDROOM

- 1. Extra bedroom to accommodate her mother-in-law when she visits

BALCONY

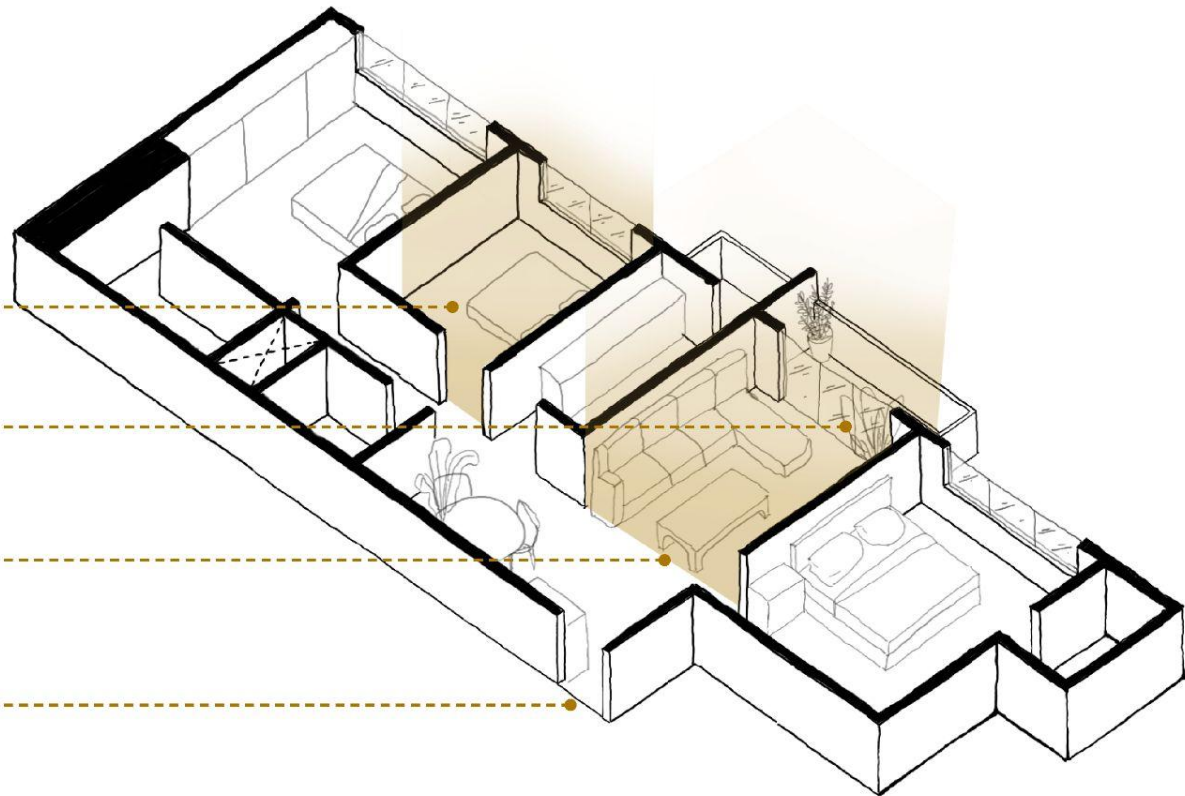
- 1. Small balcony used to display plants

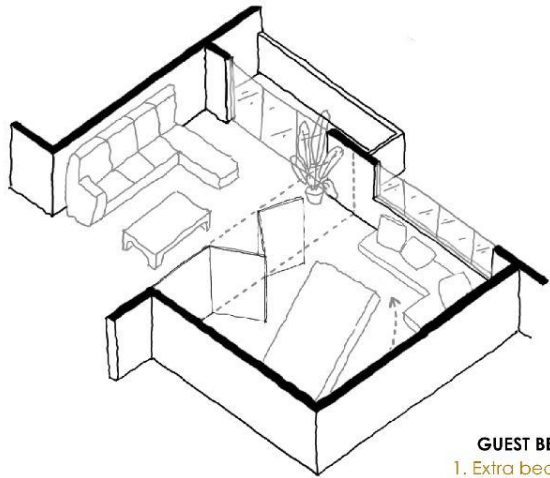
LIVING ROOM

- 1. Most of the time spent here
- 2. Large social gatherings hosted here

ENTRANCE

- 1. Space directly opens into the living room
- 2. Shoe rack kept at the side





GUEST BEDROOM

1. Extra bedroom to accommodate her mother-in-law when she visits

BALCONY

1. Small balcony used to display plants

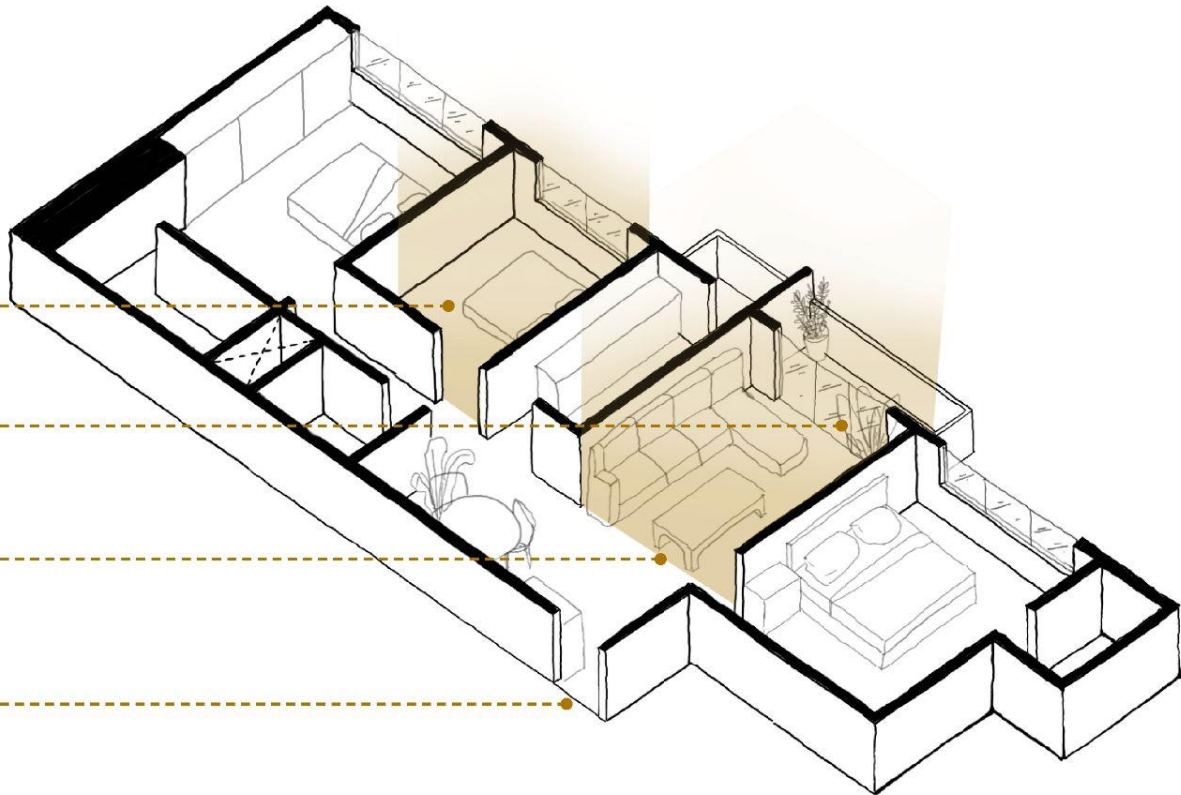
LIVING ROOM

1. Most of the time spent here
2. Large social gatherings hosted here

ENTRANCE

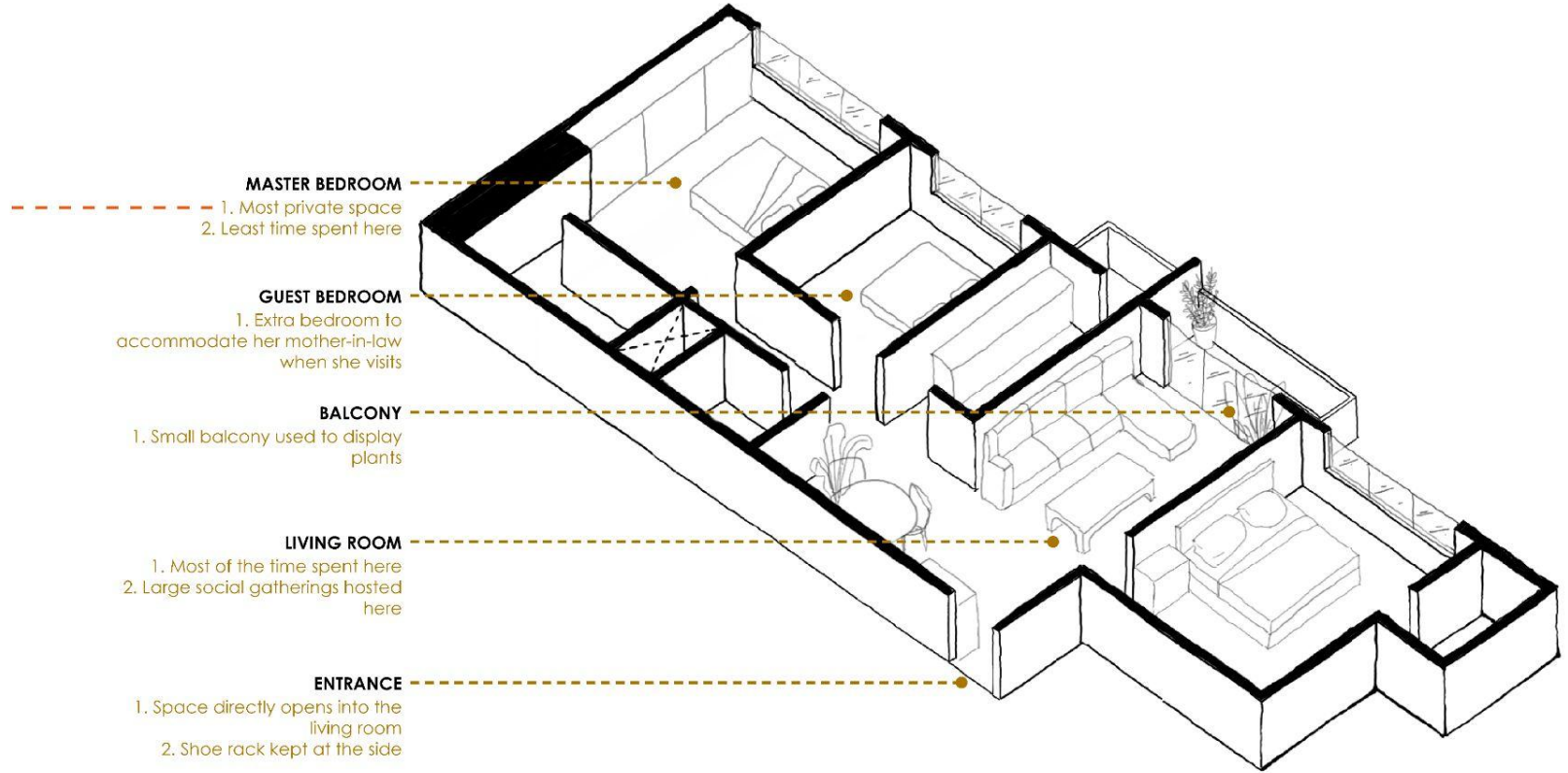
1. Space directly opens into the living room
2. Shoe rack kept at the side

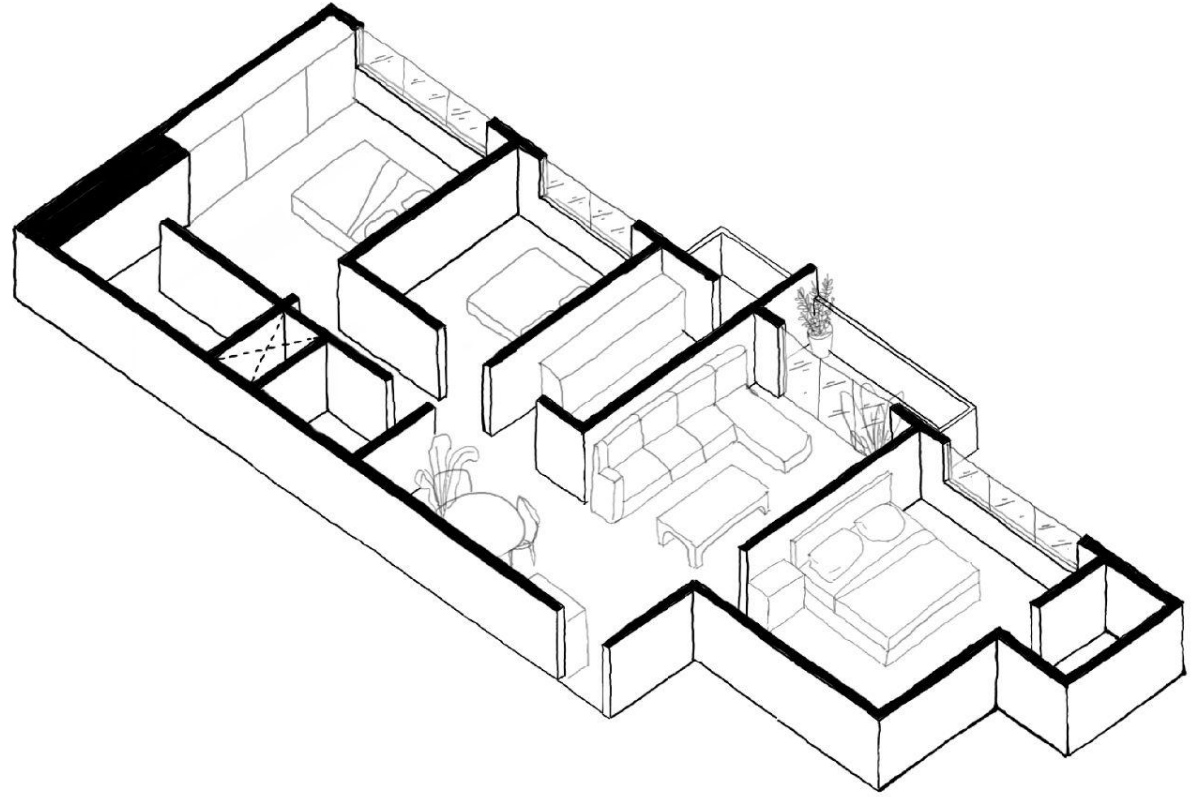
FLEXIBLE WALLS BETWEEN LIVING ROOM AND GUEST BEDROOM

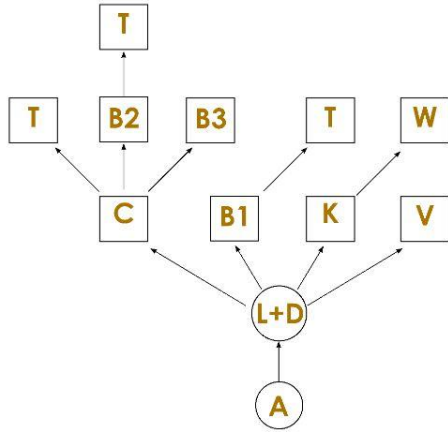


**WORKSPACE ATTACHED
TO THE BEDROOM**

**Need for separate
workspace**

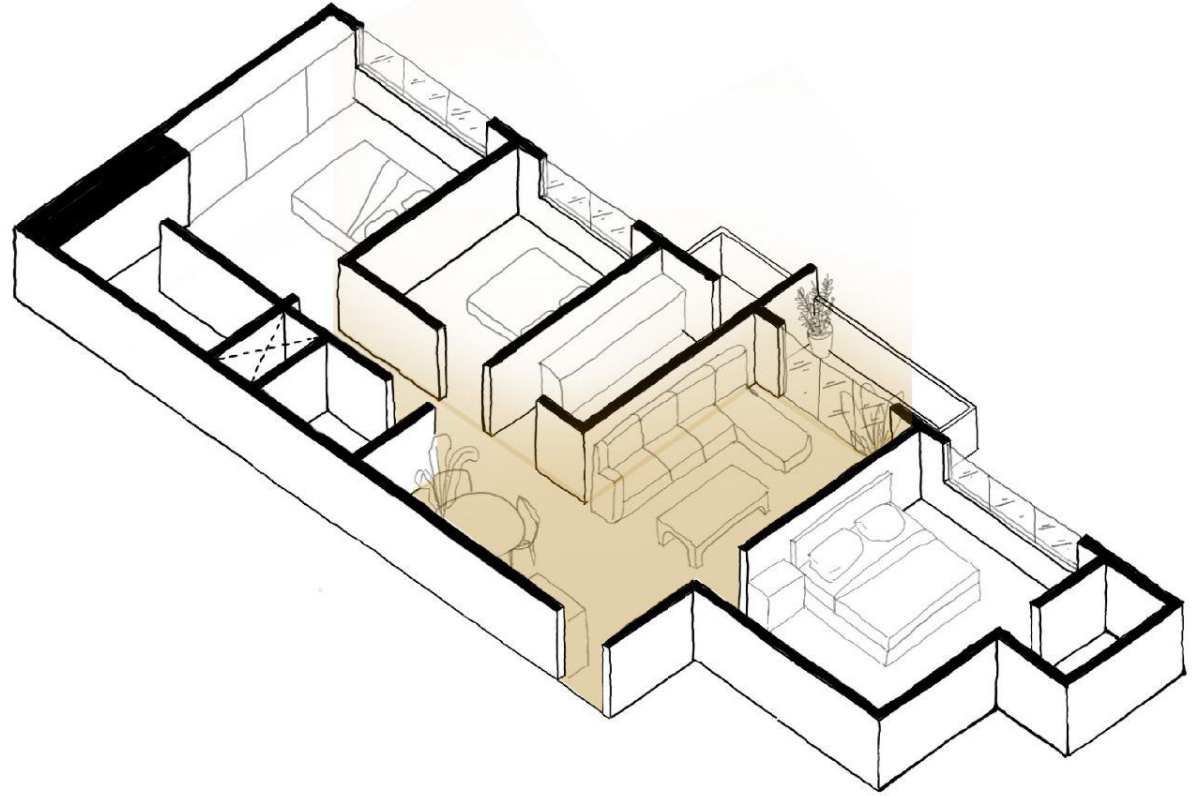


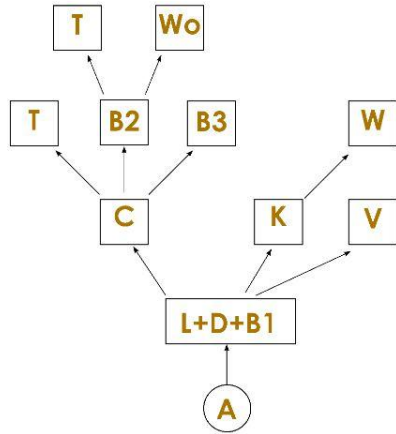




1. J-GRAPH OF EXISTING HOME

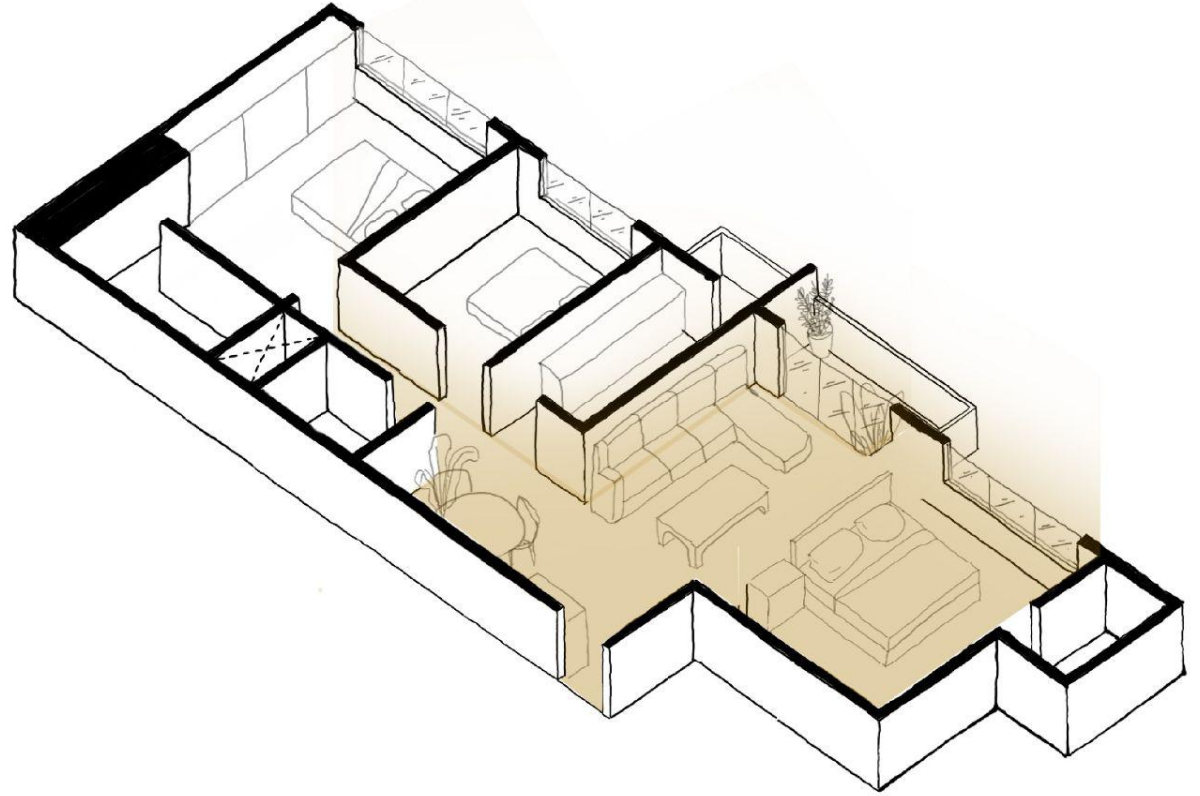
Living + Dining is a non-gated space, but the arrangement makes it seem separate from each other.





1. J-GRAPH OF EXISTING HOME

Larger non-gated space makes the house more flexible in assigning multiple functions.



CASE 3

ISHAAN'S HOUSE



pune

1. WELL INTEGRATED HOME

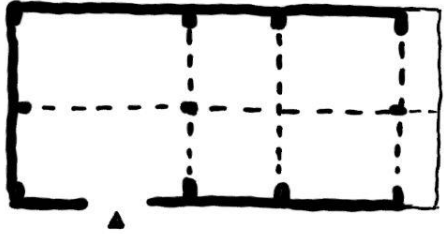
House with flexible walls

Does not see the need to have multiple small rooms as opposed to one large space which can transform

1. WELL INTEGRATED HOME

House with flexible walls

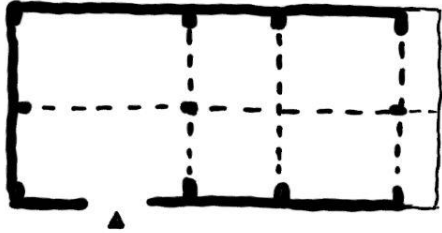
Does not see the need to have multiple small rooms as opposed to one large space which can transform



1. WELL INTEGRATED HOME

House with flexible walls

Does not see the need to have multiple small rooms as opposed to one large space which can transform



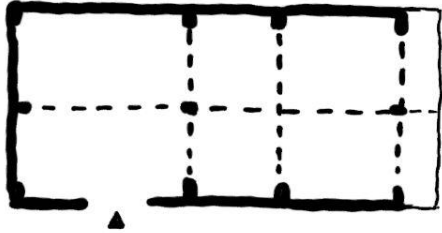
2. PRIVATE BALCONY

Balcony not as an extension of the living space, but a separate tranquil resting space

1. WELL INTEGRATED HOME

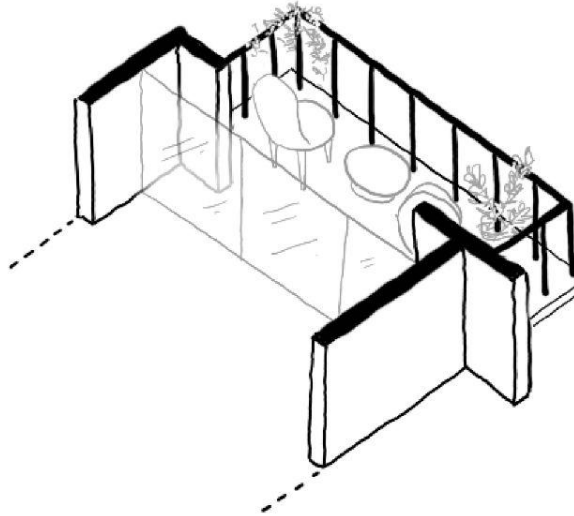
House with flexible walls

Does not see the need to have multiple small rooms as opposed to one large space which can transform



2. PRIVATE BALCONY

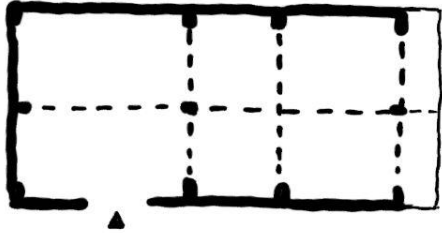
Balcony not as an extension of the living space, but a separate tranquil resting space



1. WELL INTEGRATED HOME

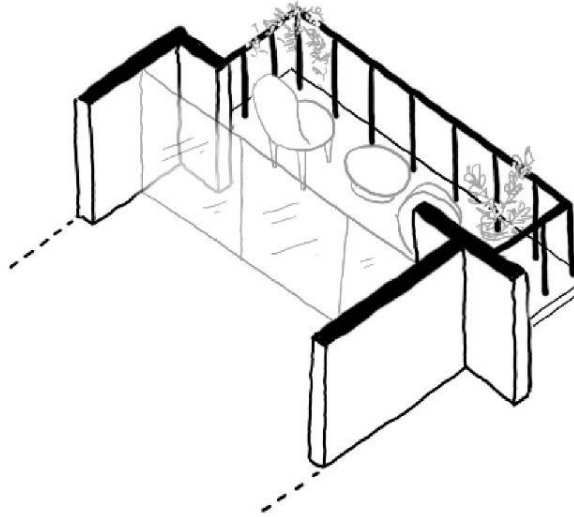
House with flexible walls

Does not see the need to have multiple small rooms as opposed to one large space which can transform



2. PRIVATE BALCONY

Balcony not as an extension of the living space, but a separate tranquil resting space



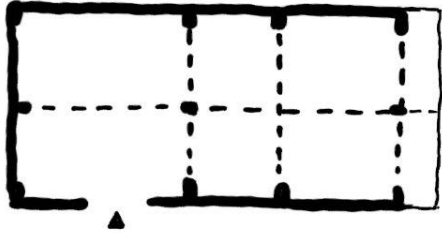
3. WELL DESIGNED KITCHEN

Kitchen as a walled space with an outdoor area for barbeque and breakfast space.

1. WELL INTEGRATED HOME

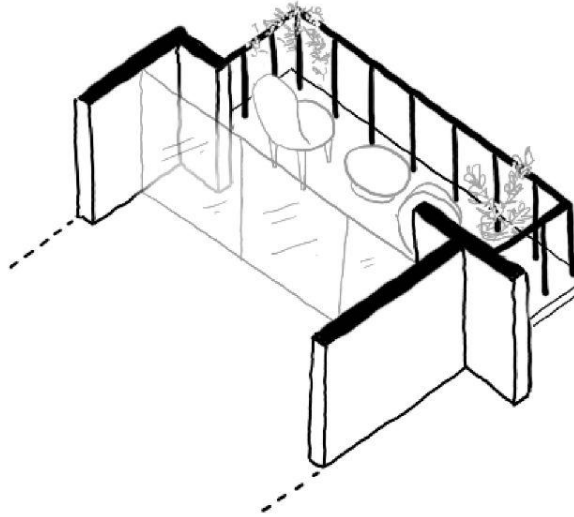
House with flexible walls

Does not see the need to have multiple small rooms as opposed to one large space which can transform



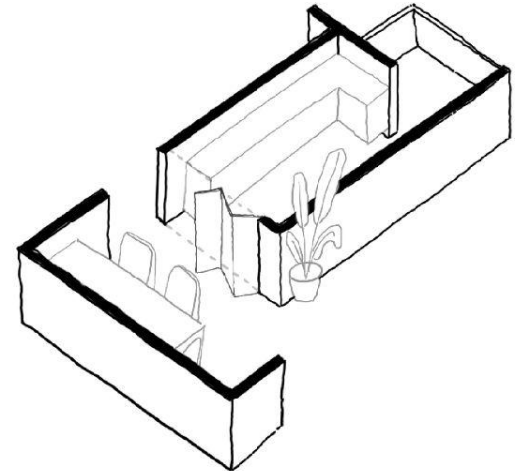
2. PRIVATE BALCONY

Balcony not as an extension of the living space, but a separate tranquil resting space



3. WELL DESIGNED KITCHEN

Kitchen as a walled space with an outdoor area for barbeque and breakfast space.



What is the way forward?

What is the way forward?

Do we continue to build houses with similar layouts, dimensions and inter-relationships as houses throughout history?



What is the way forward?

Do we continue to build houses with similar layouts, dimensions and inter-relationships as houses throughout history?

How do we, as designers, draw the line on the number of new housing types that need to come about when we consider the multitude of variation that exists among individuals and families?



What is the way forward?

Do we continue to build houses with similar layouts, dimensions and inter-relationships as houses throughout history?

How do we, as designers, draw the line on the number of new housing types that need to come about when we consider the multitude of variation that exists among individuals and families?

Any realistic approach to forming new housing types requires a certain amount of generalisation that may make the execution reductive in nature. Then, is there something inherently wrong with mass housing?

