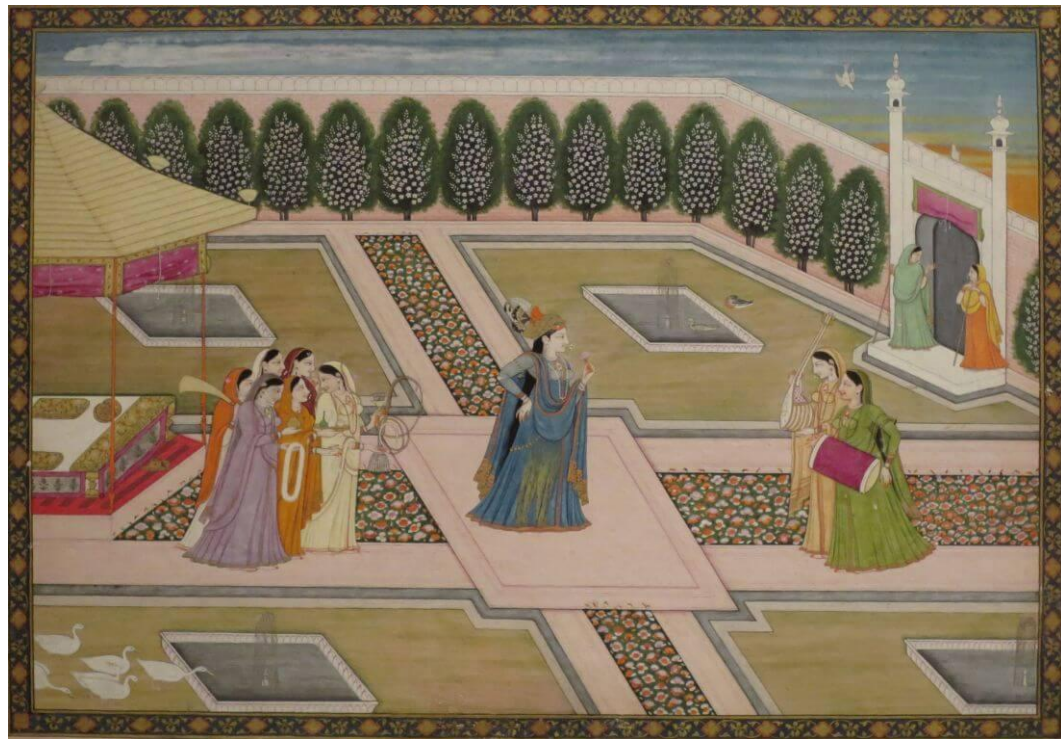


*Anubhavo no Anuvad :*

Translation of Experiences.

"Perception, influenced by experience and knowledge  
creates an acceptable level of reality"

-Kamil Ali, The Initiates



मैं झरोखा हूँ।  
कि जिसकी टेक लेकर  
विश्व की हर चीज बाहर झाँकती है।

पर, नहीं मुझ पर,  
झुका है विश्व तो उस जिन्दगी पर  
जो मुझे छूकर सरकती जा रही है।

जो घटित होता है, यहाँ से दूर है।  
जो घटित होता, यहाँ से पास है।

कौन है अज्ञात ? किसको जानता हूँ ?

और की क्या बात ?  
कवि तो अपना भी नहीं है।



"All things are subject to interpretation. Whichever interpretation prevails at a given time is a function of power and not truth."

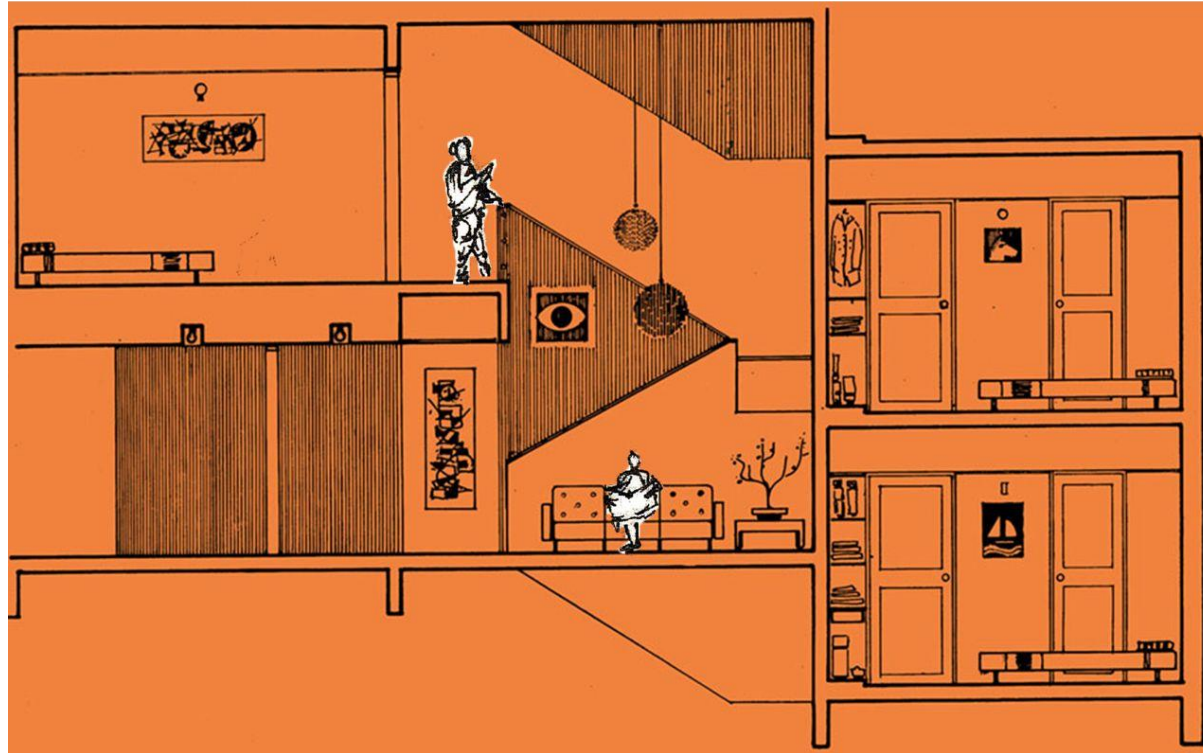
-Friedrich Nietzsche

CENTRE POINT





# KANCHANJUNGA APARTMENT





AMAYA 612







AMAYA PEARL





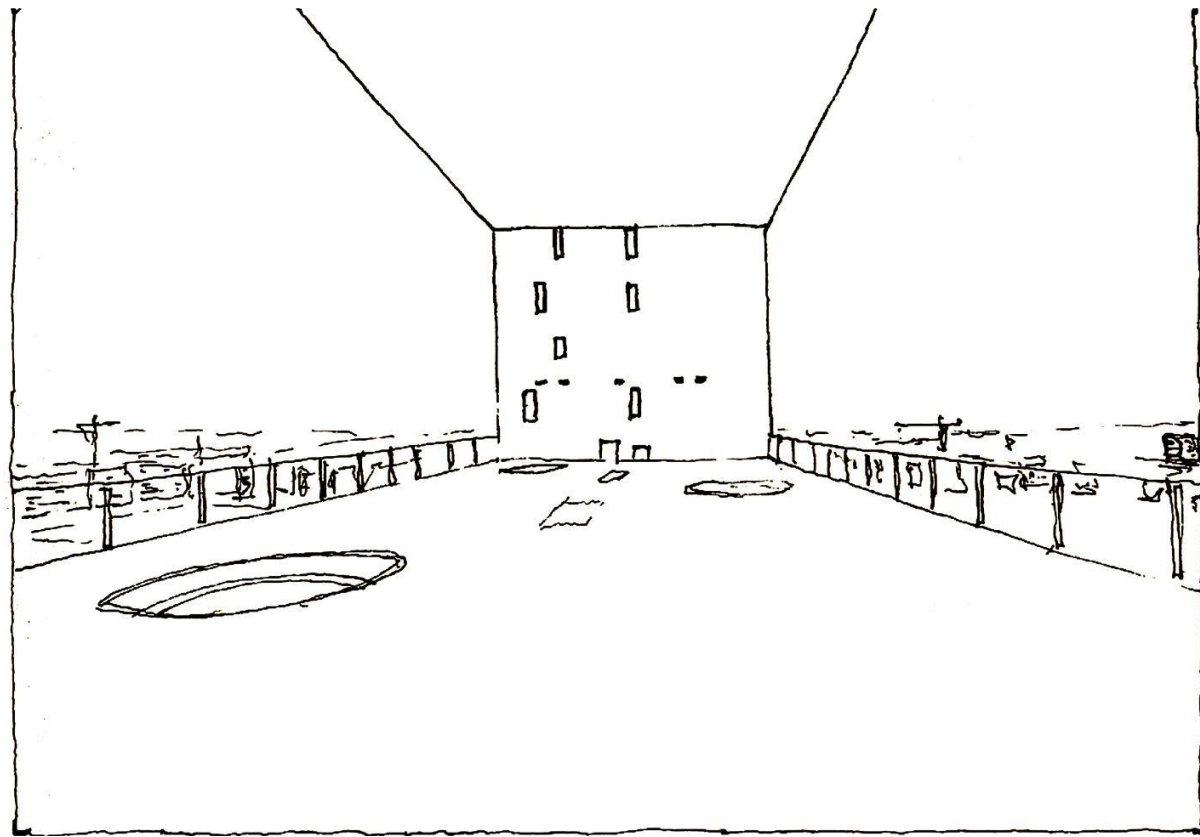


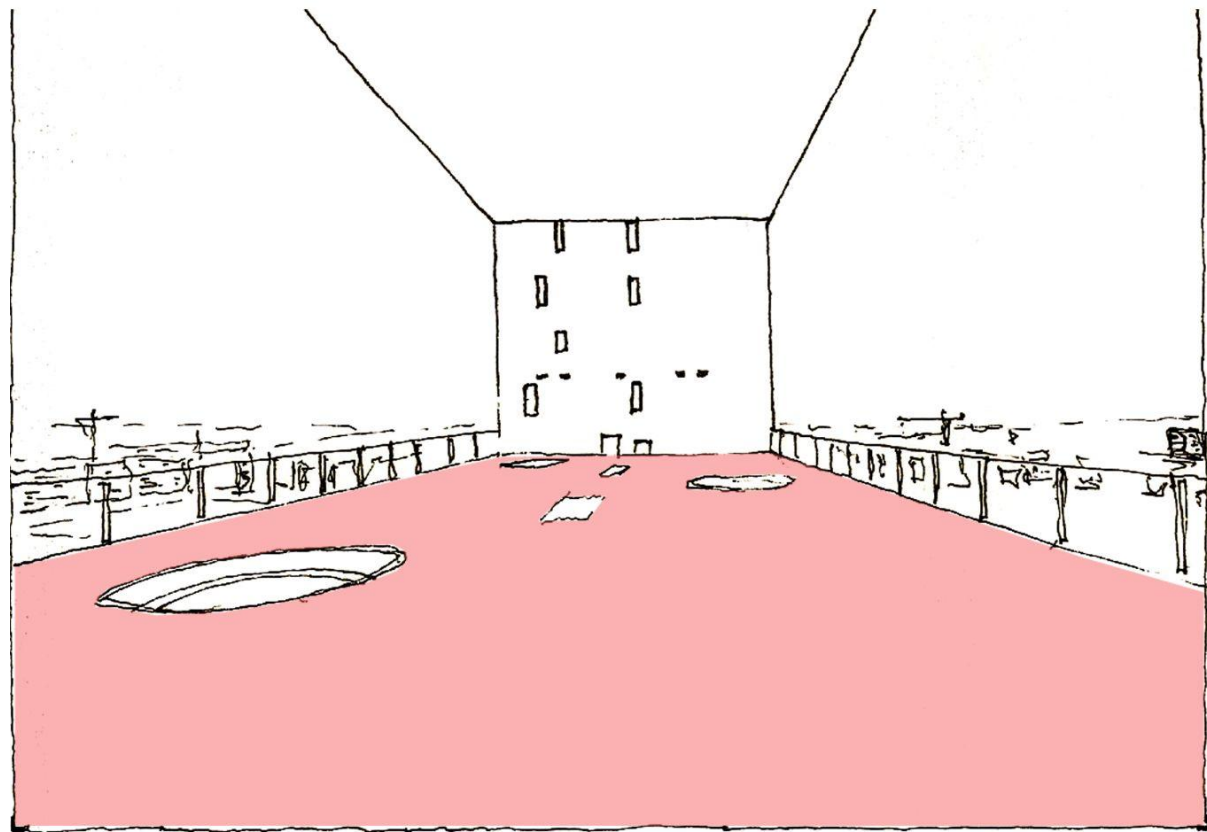




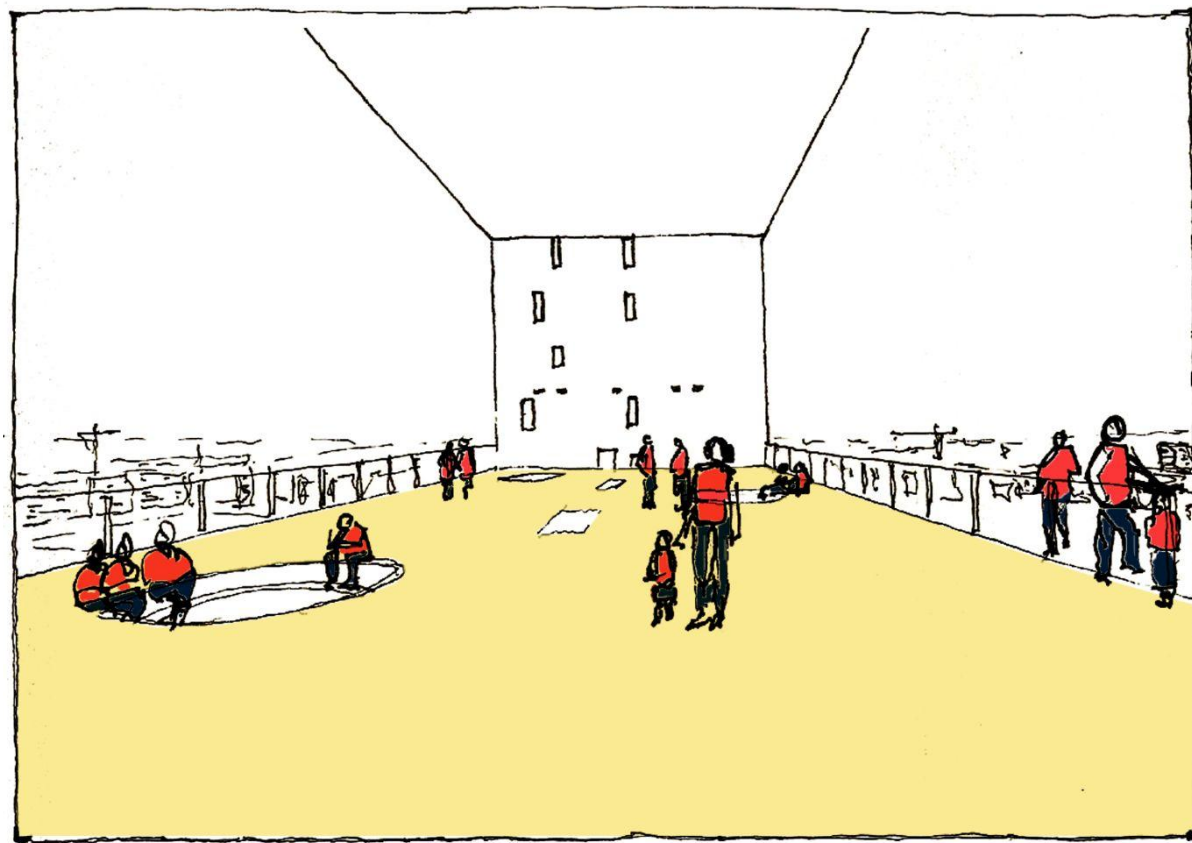


MIRADOR

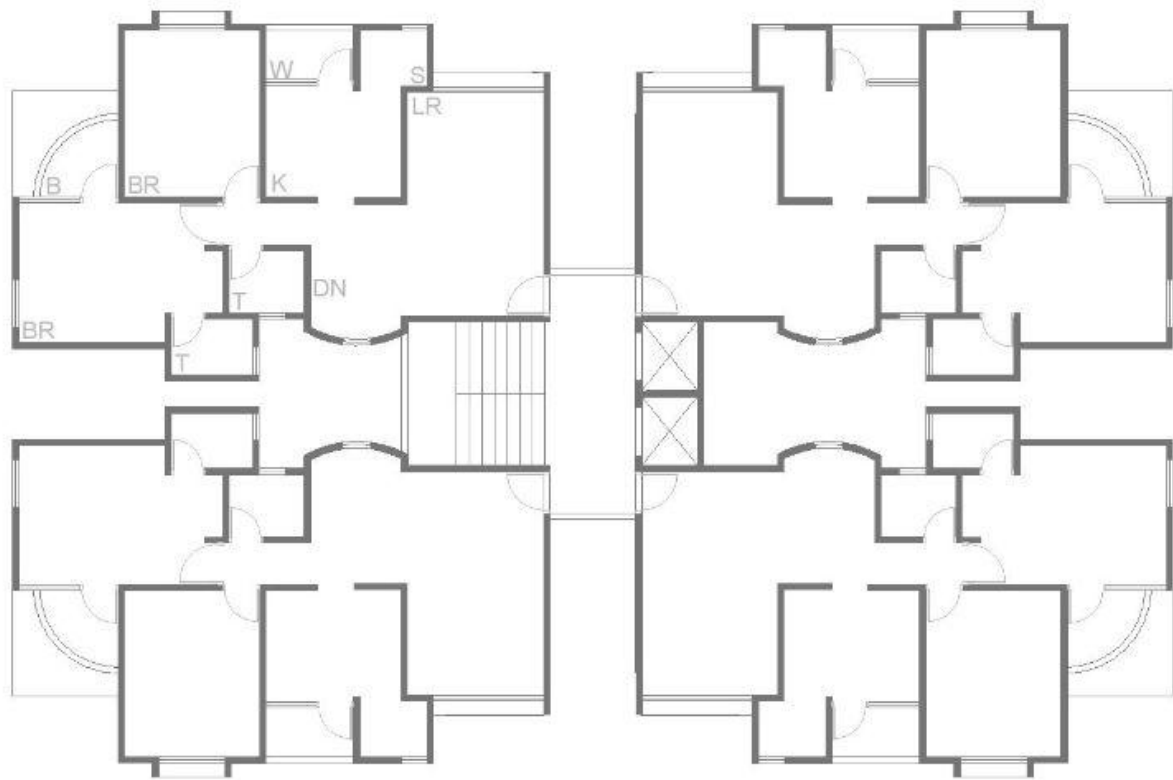






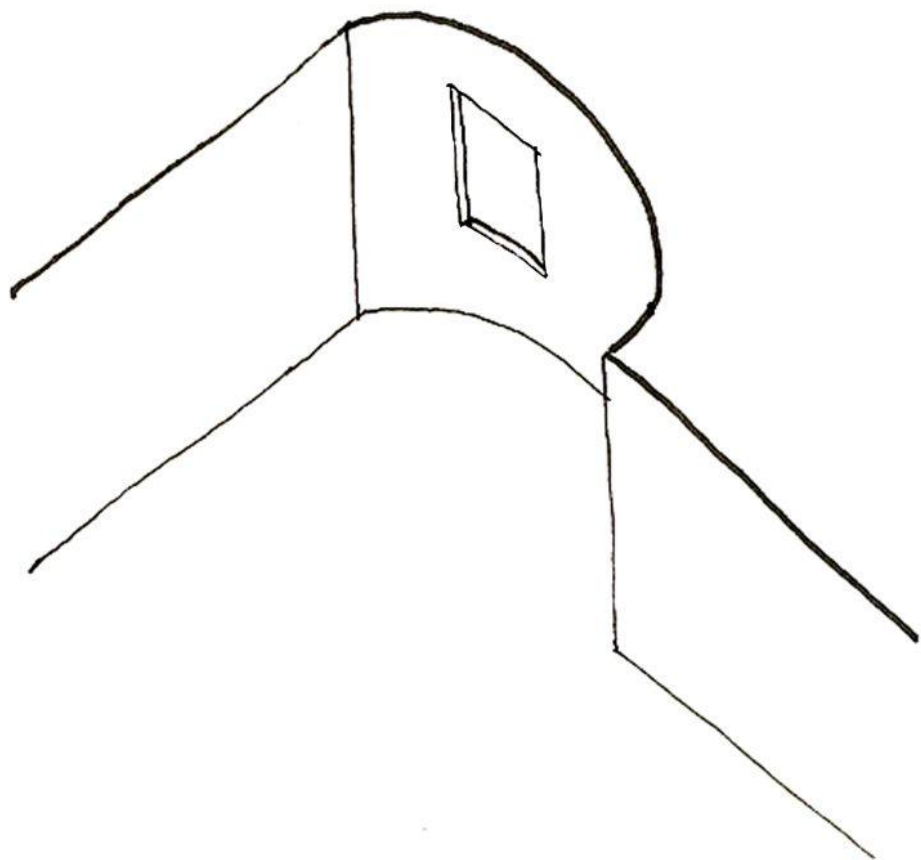


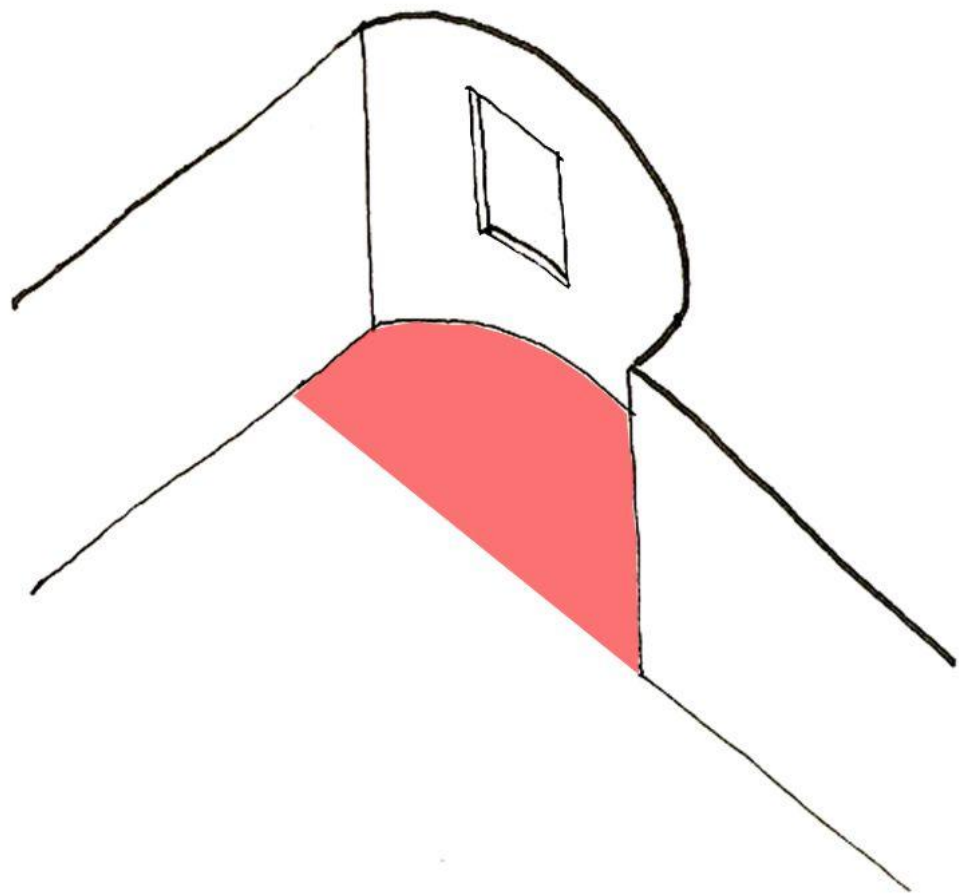
OXFORD TOWER

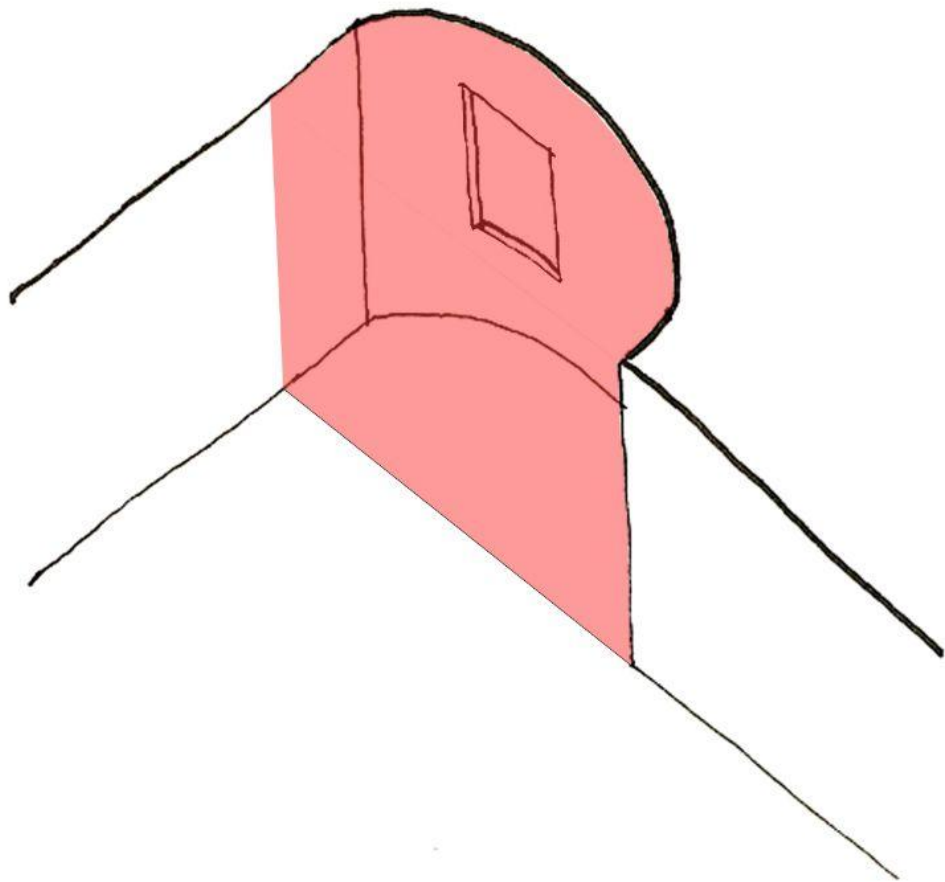




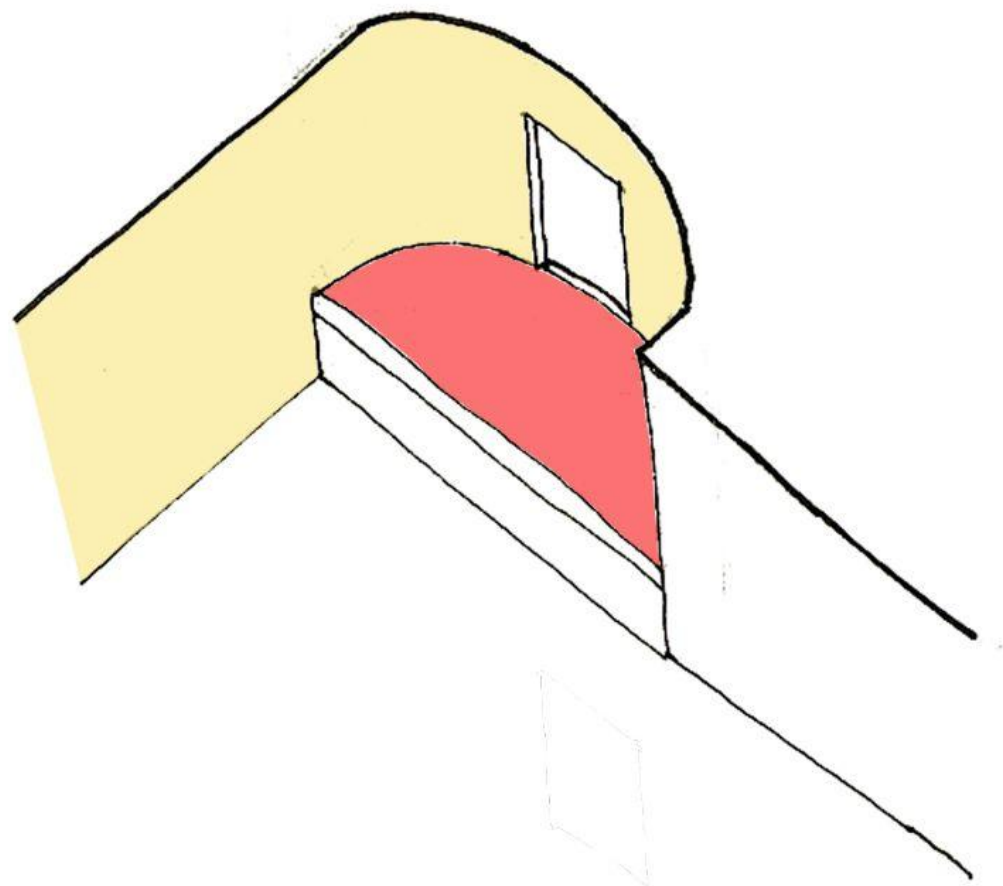


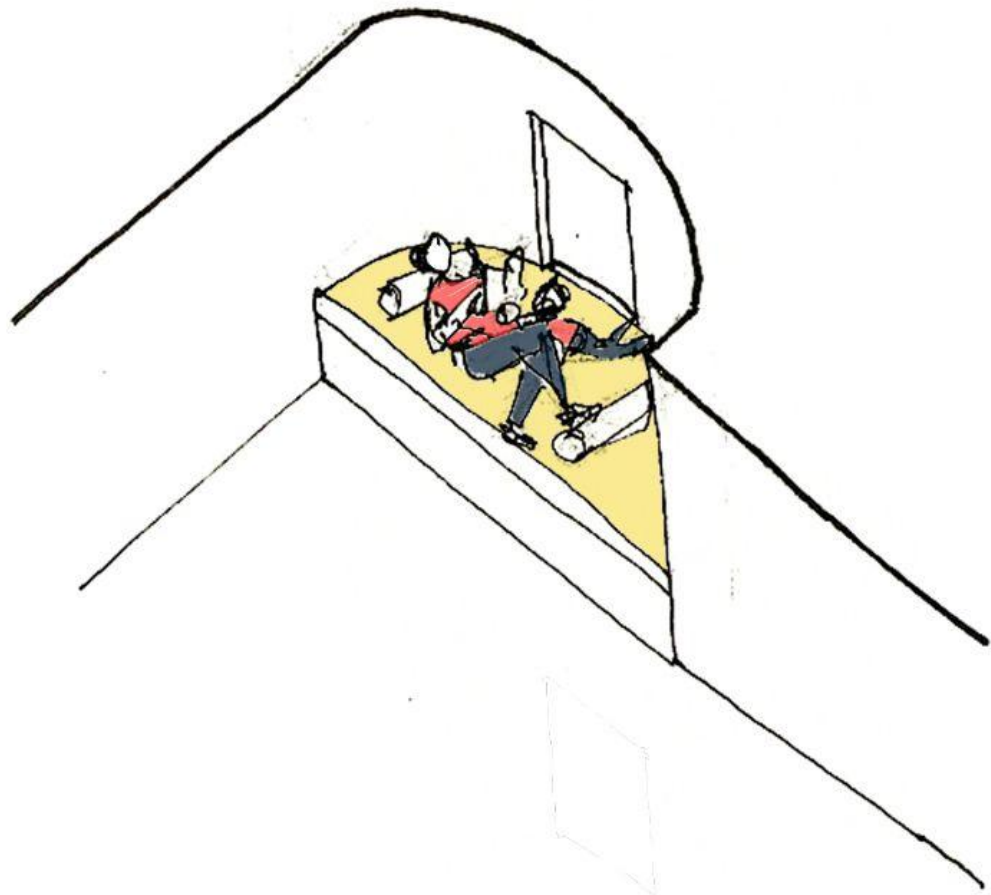






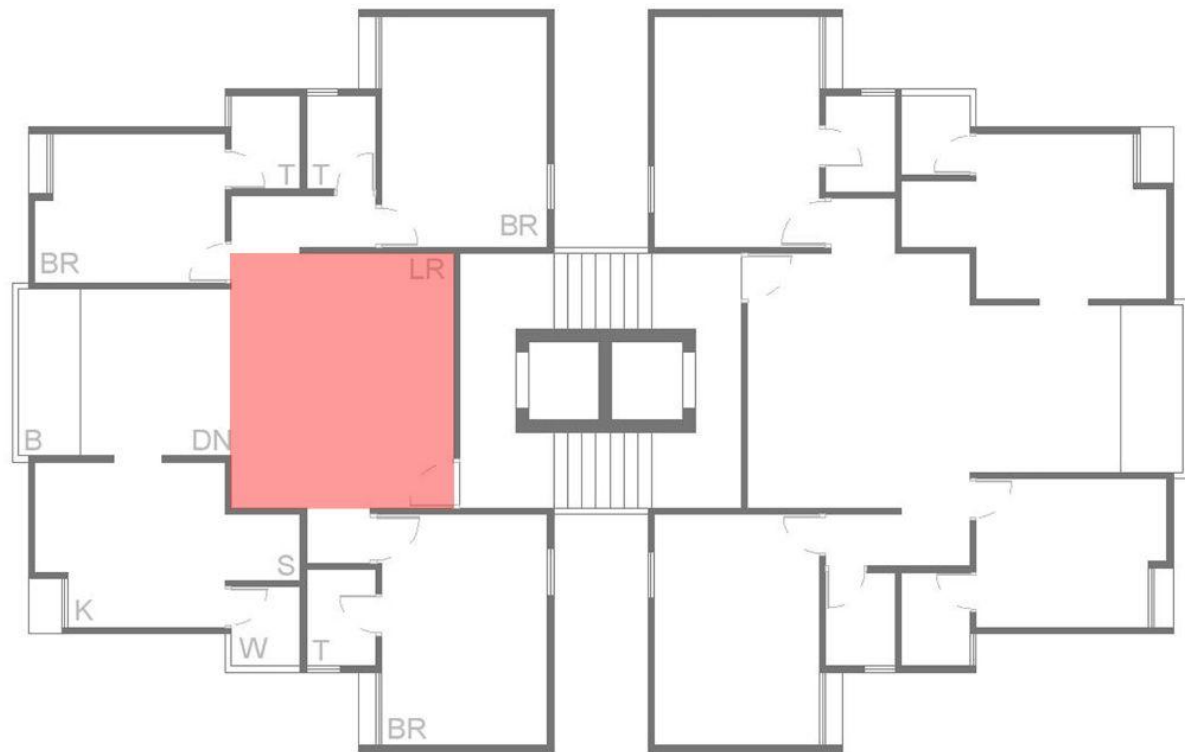


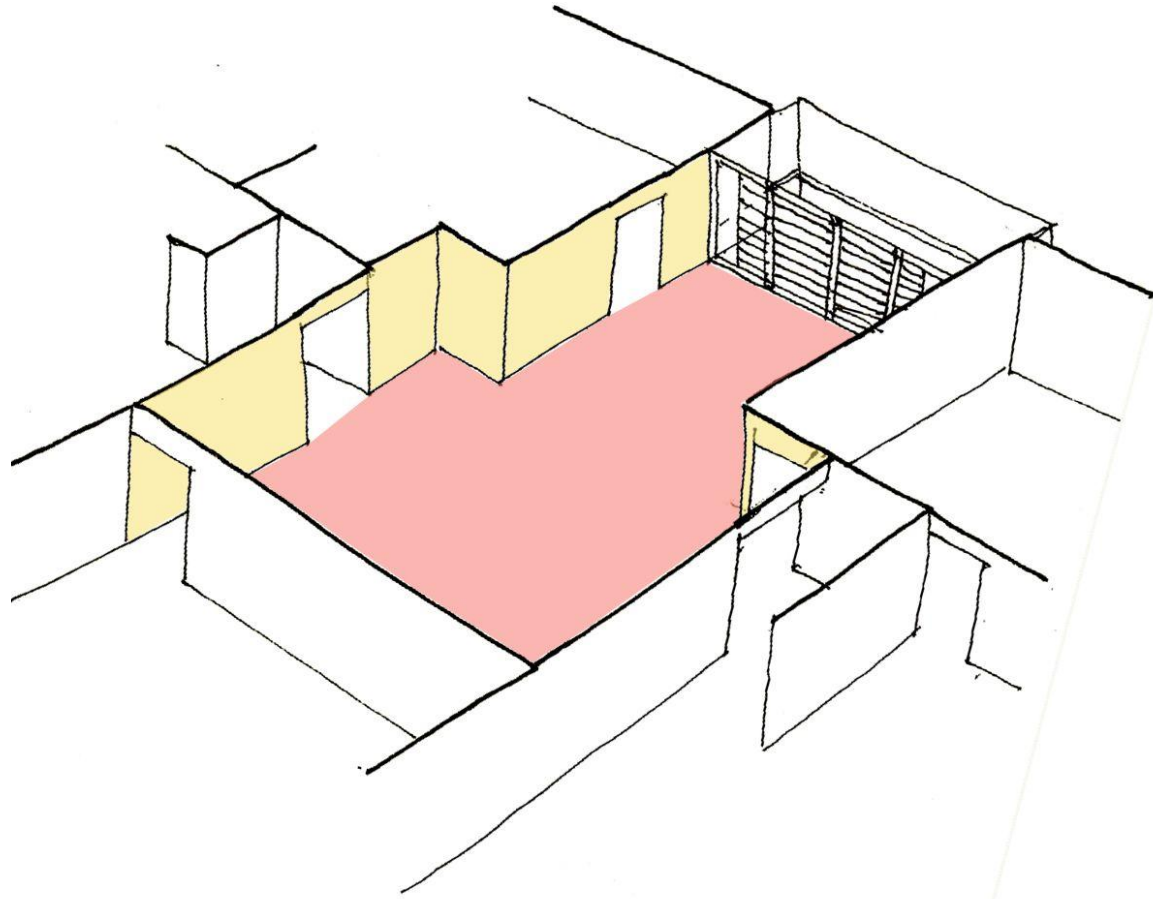


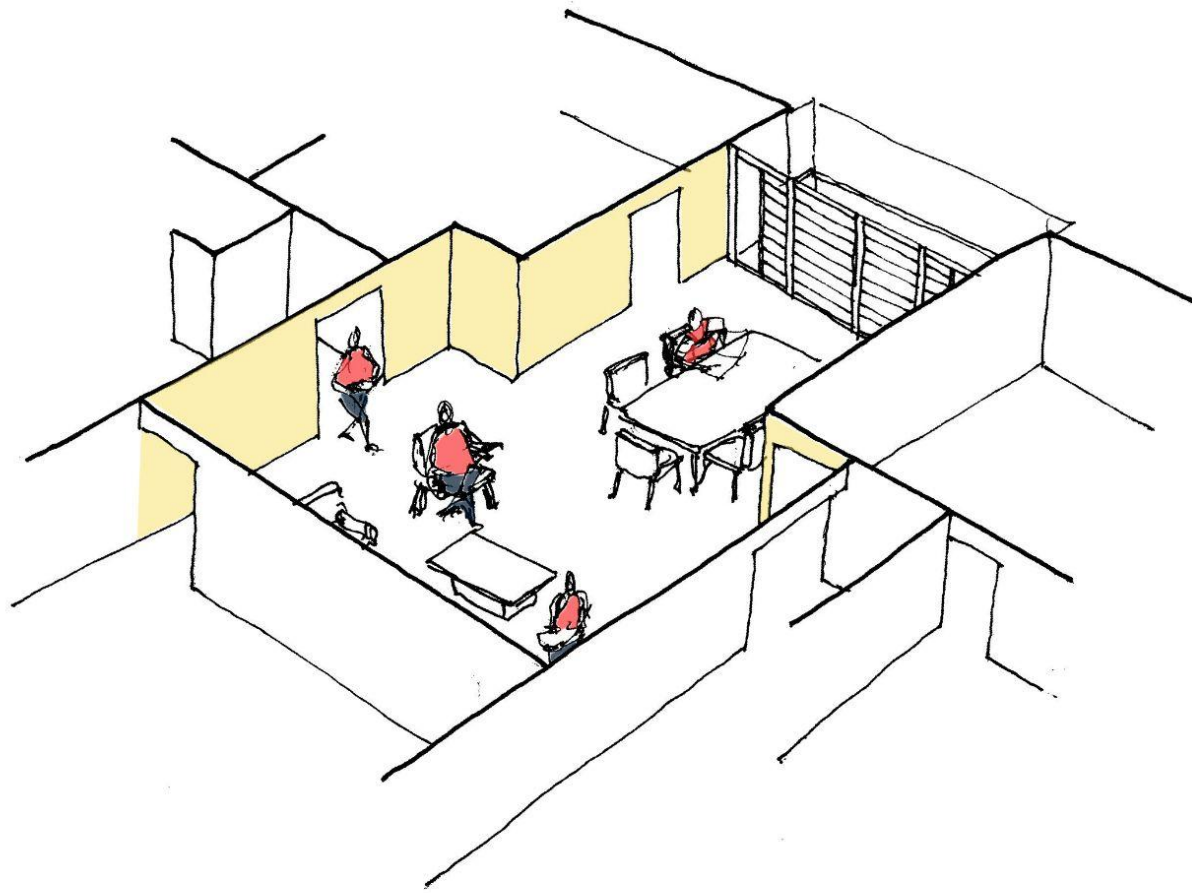


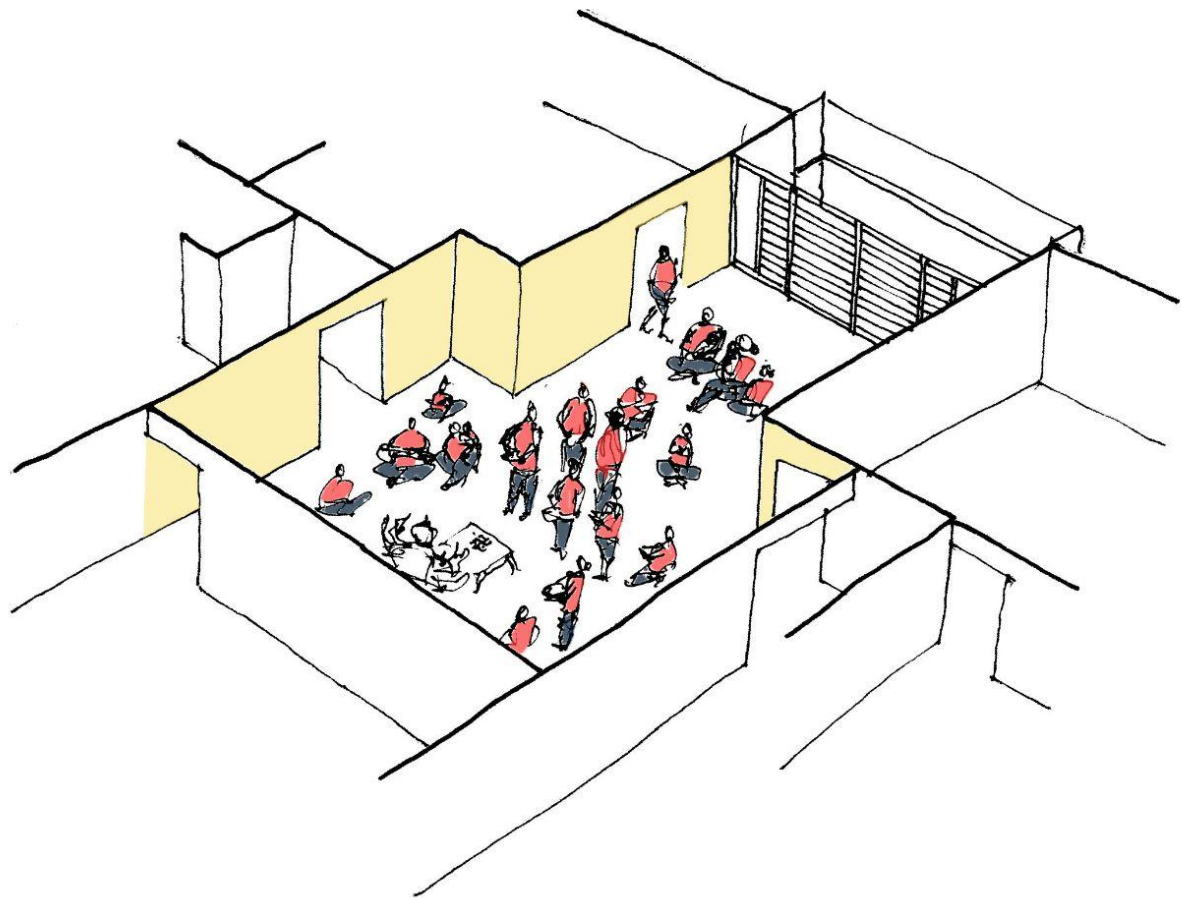
PRERNA APARTMENT





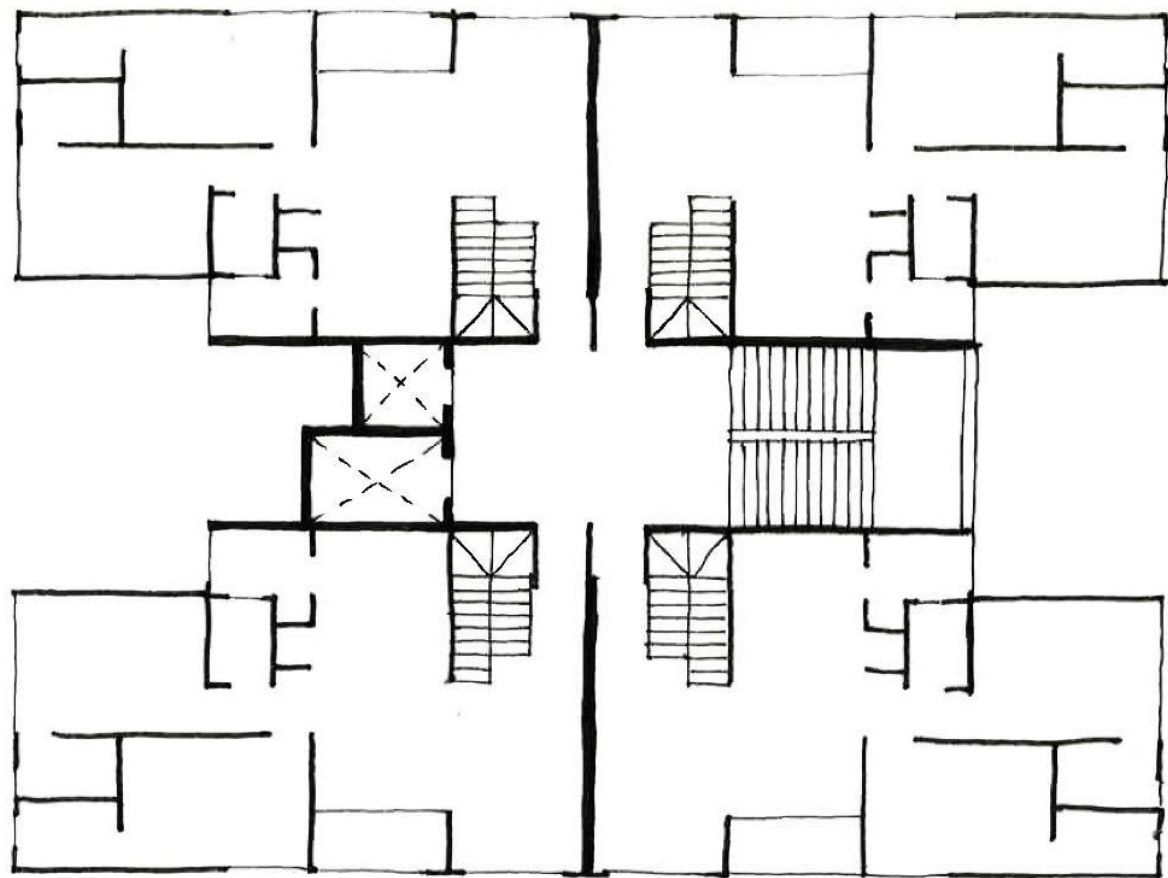


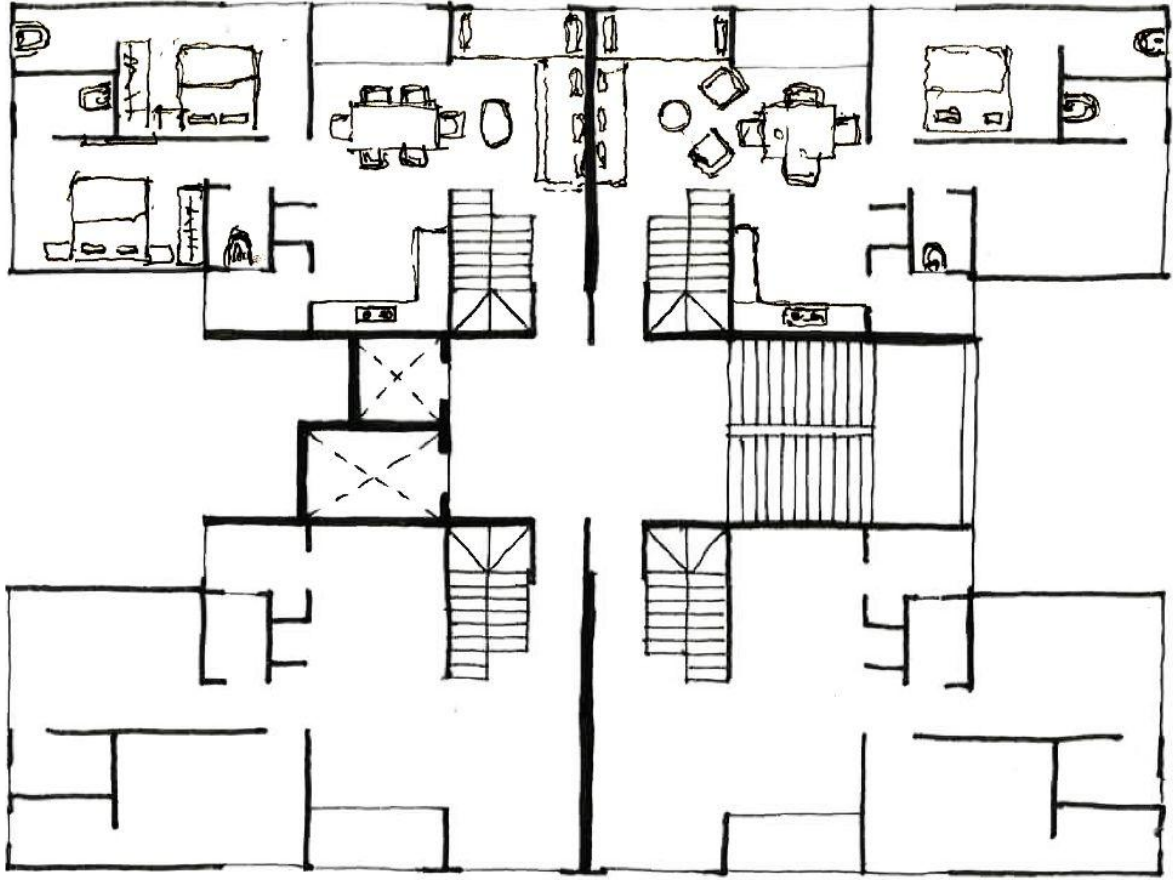


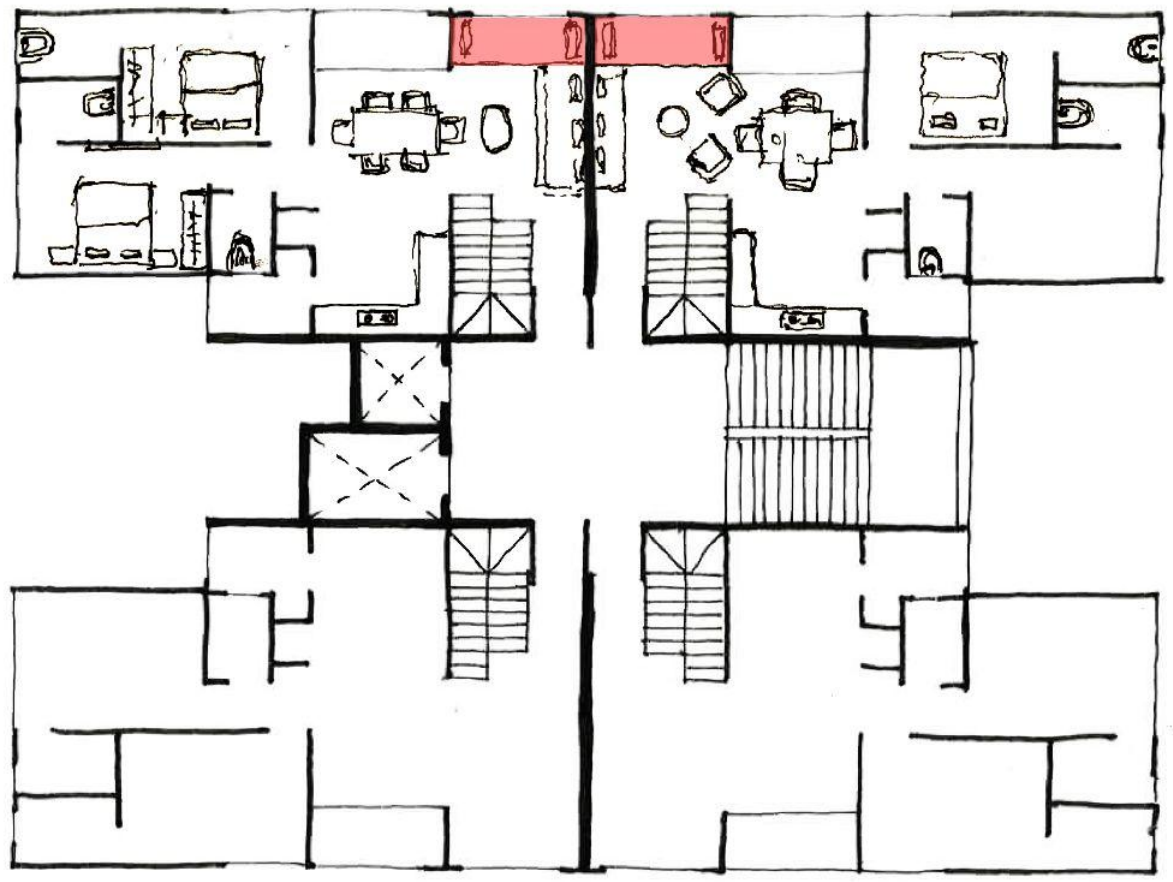


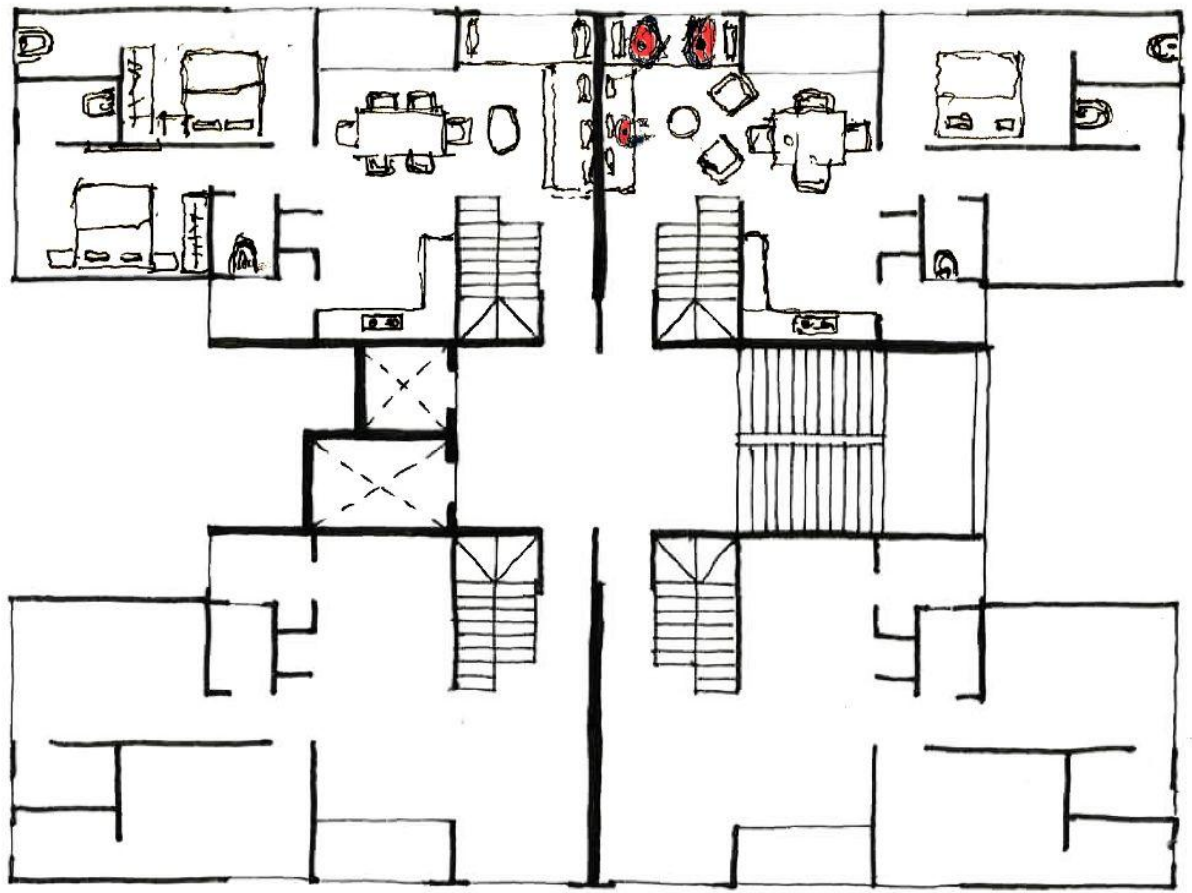


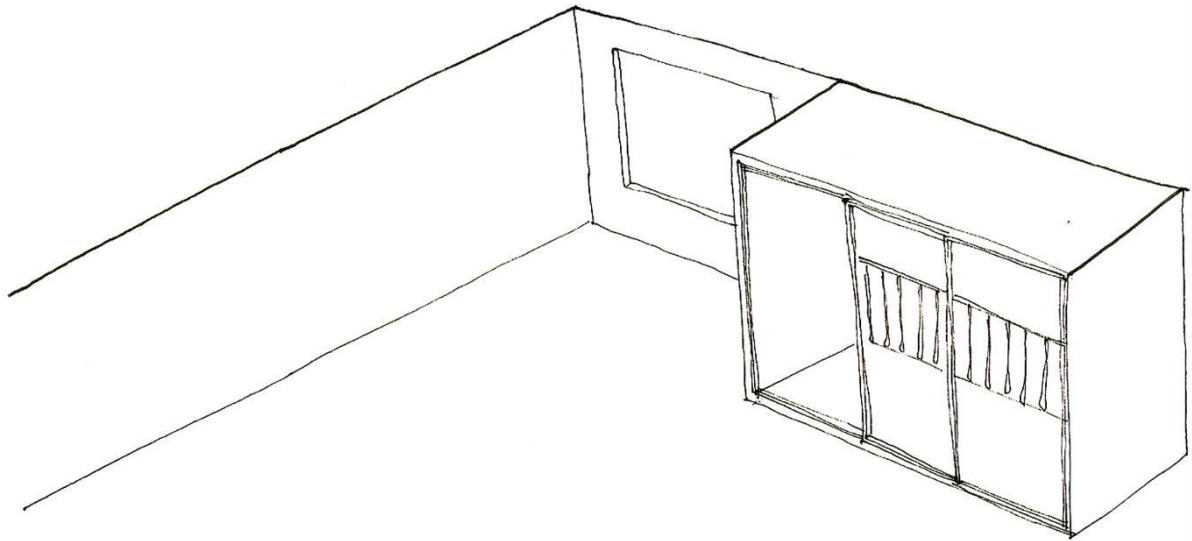
RK TULSIDHAM

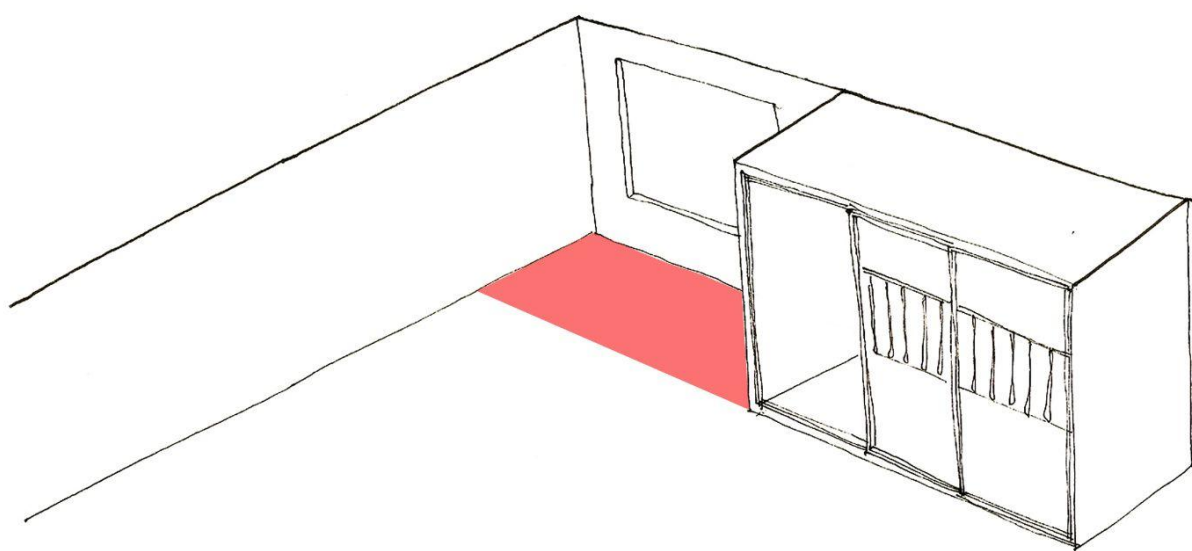


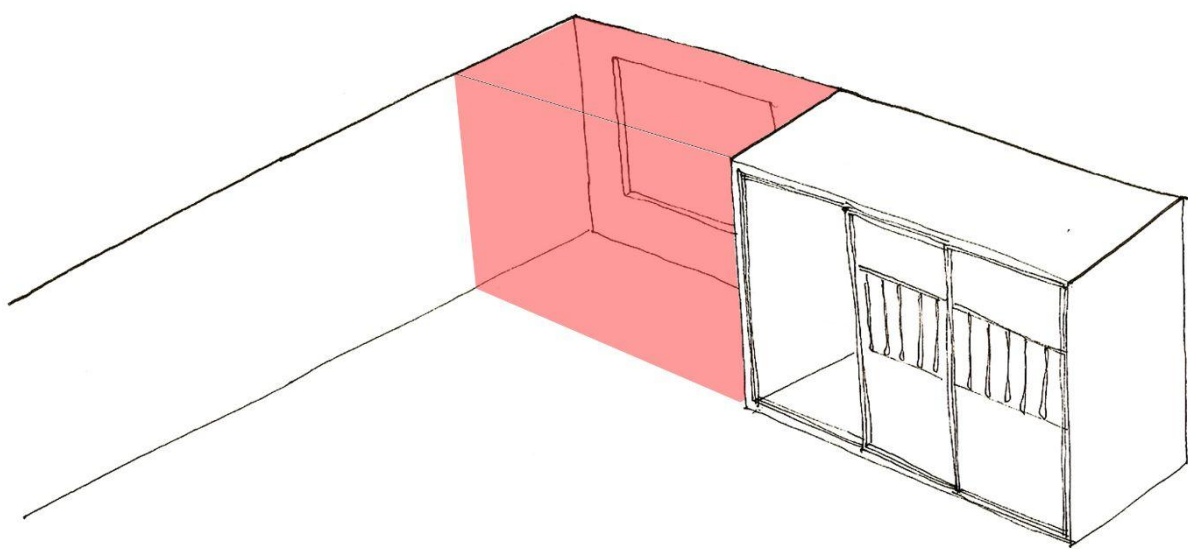




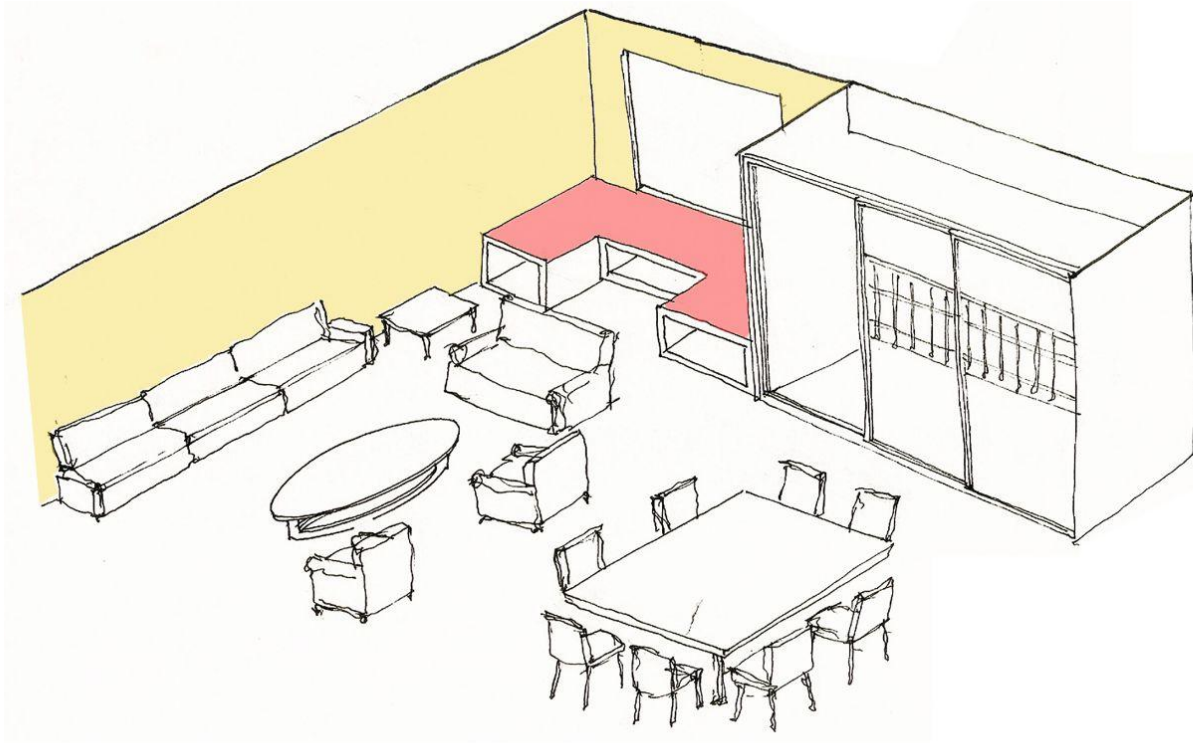


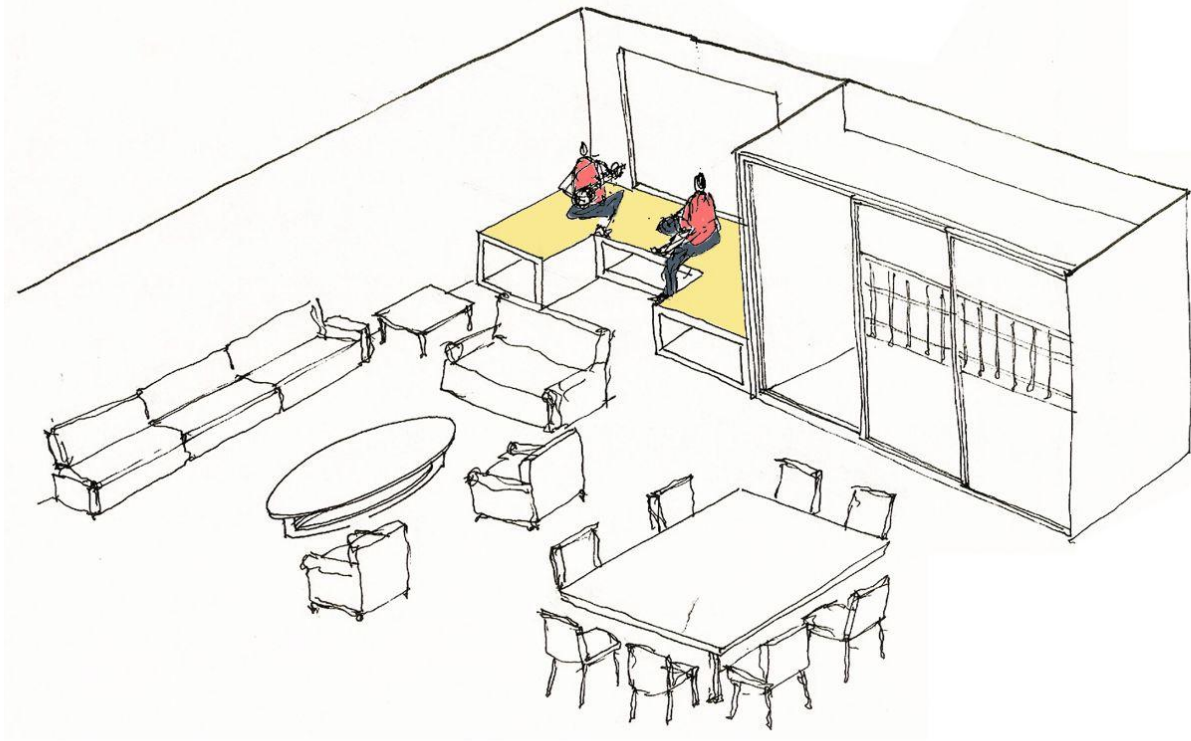




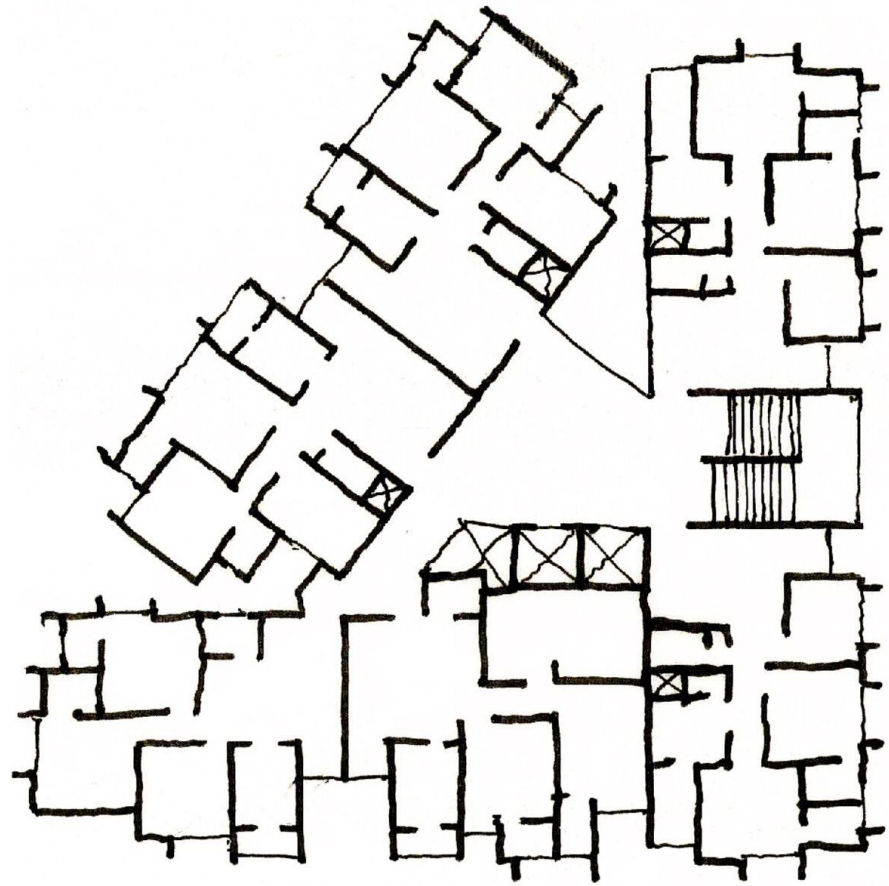


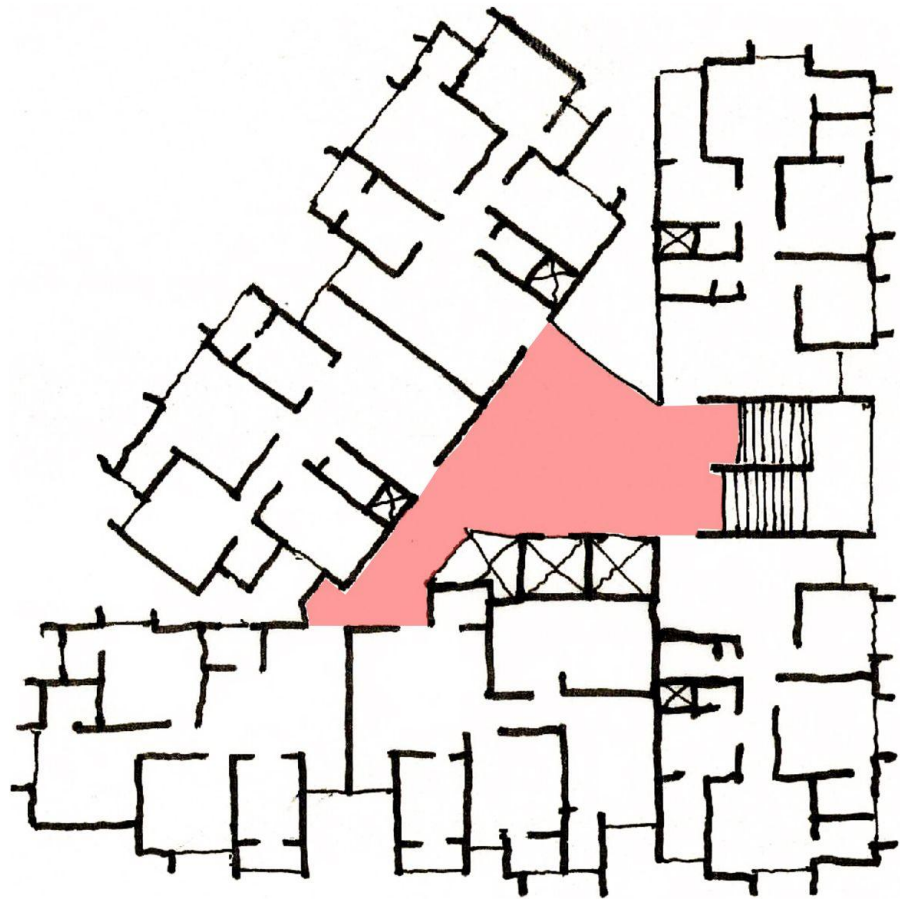


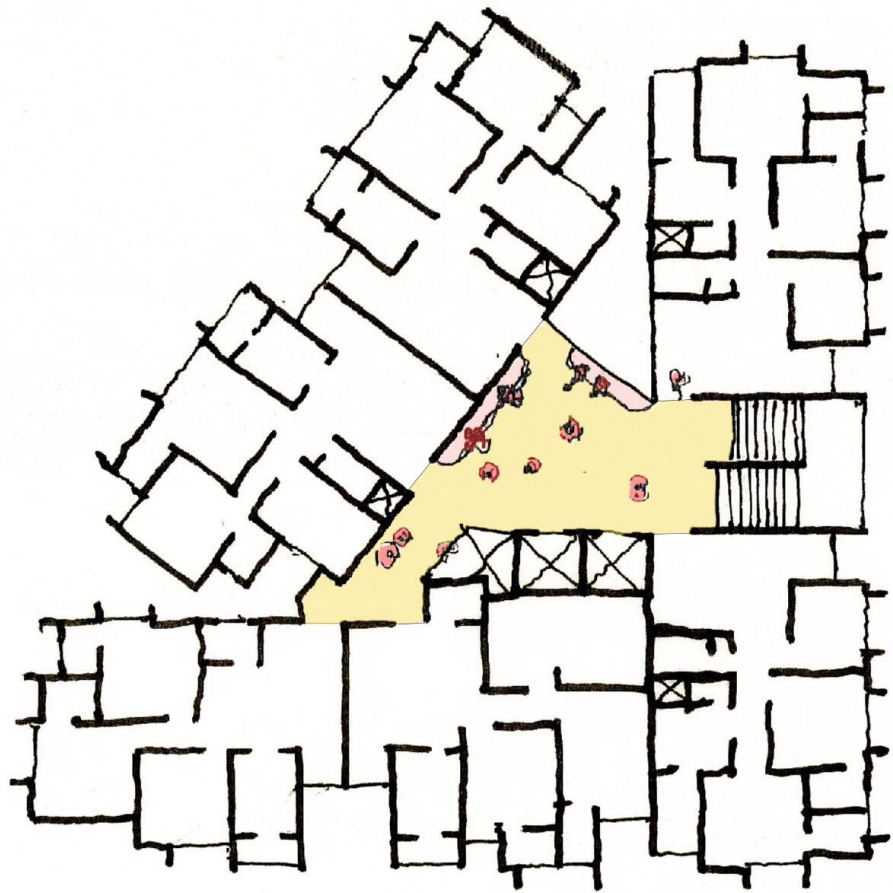


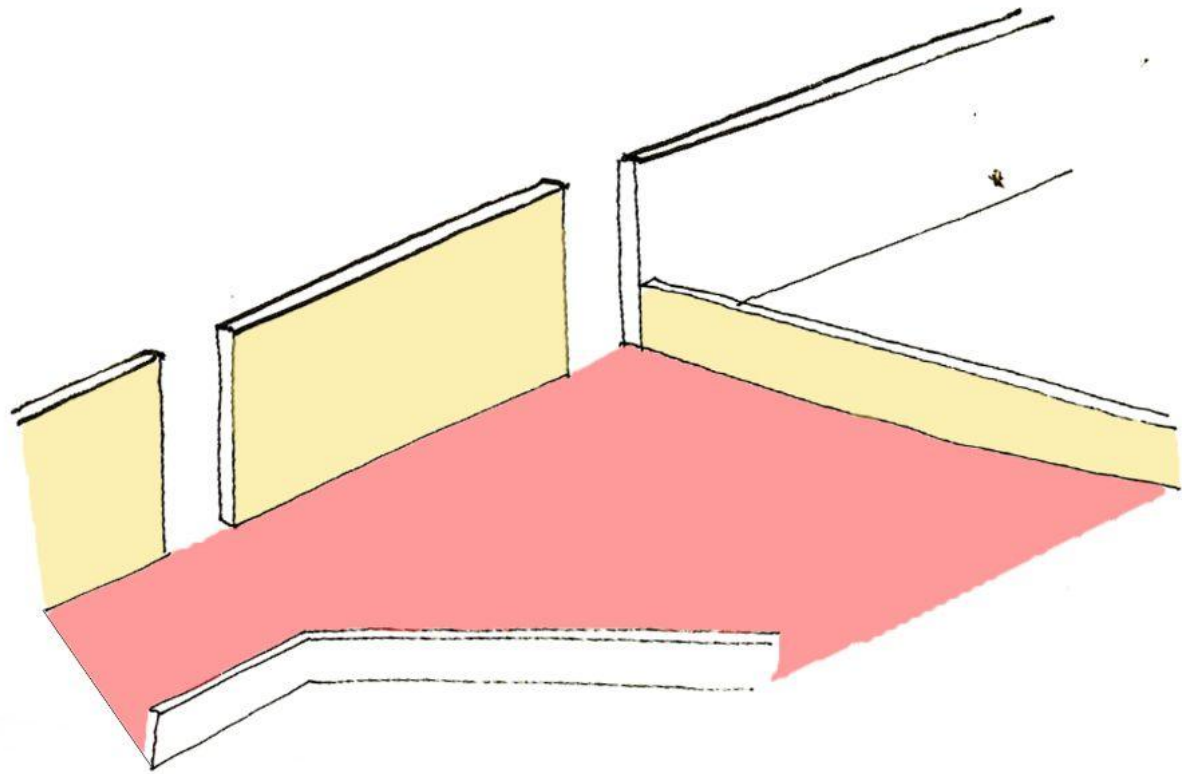


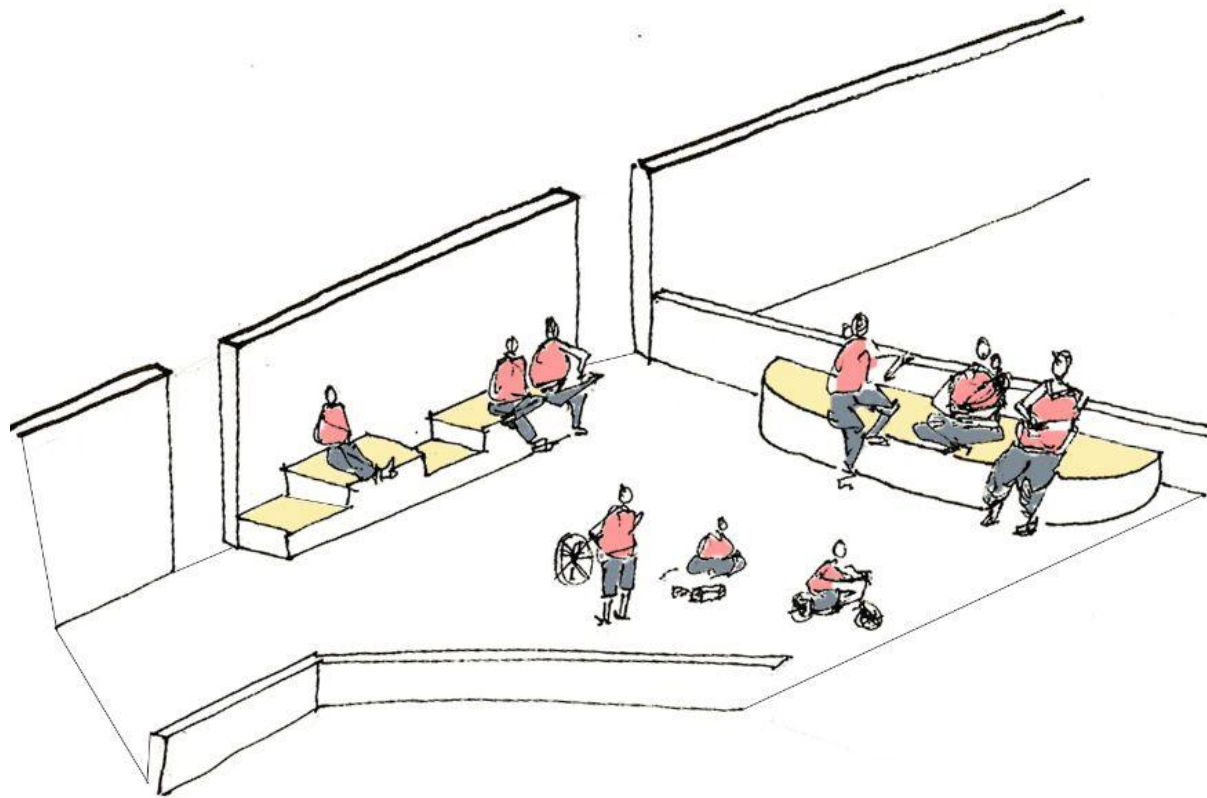
SANKALP ETERNITY





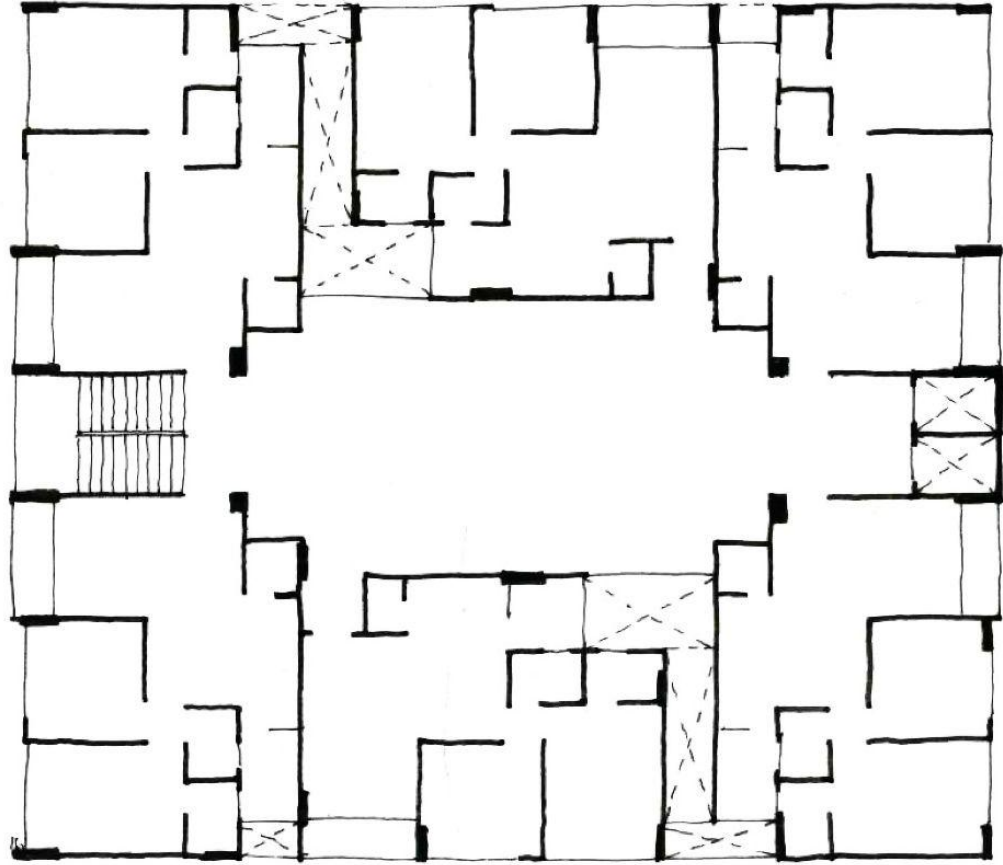


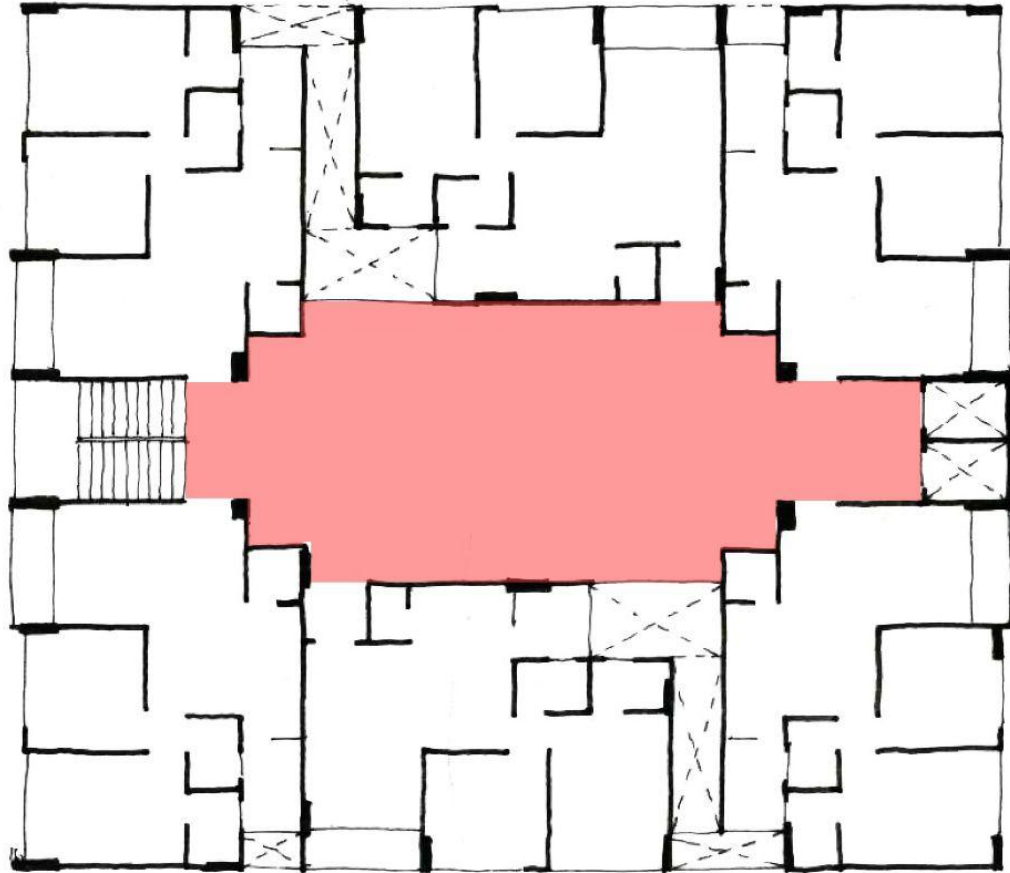


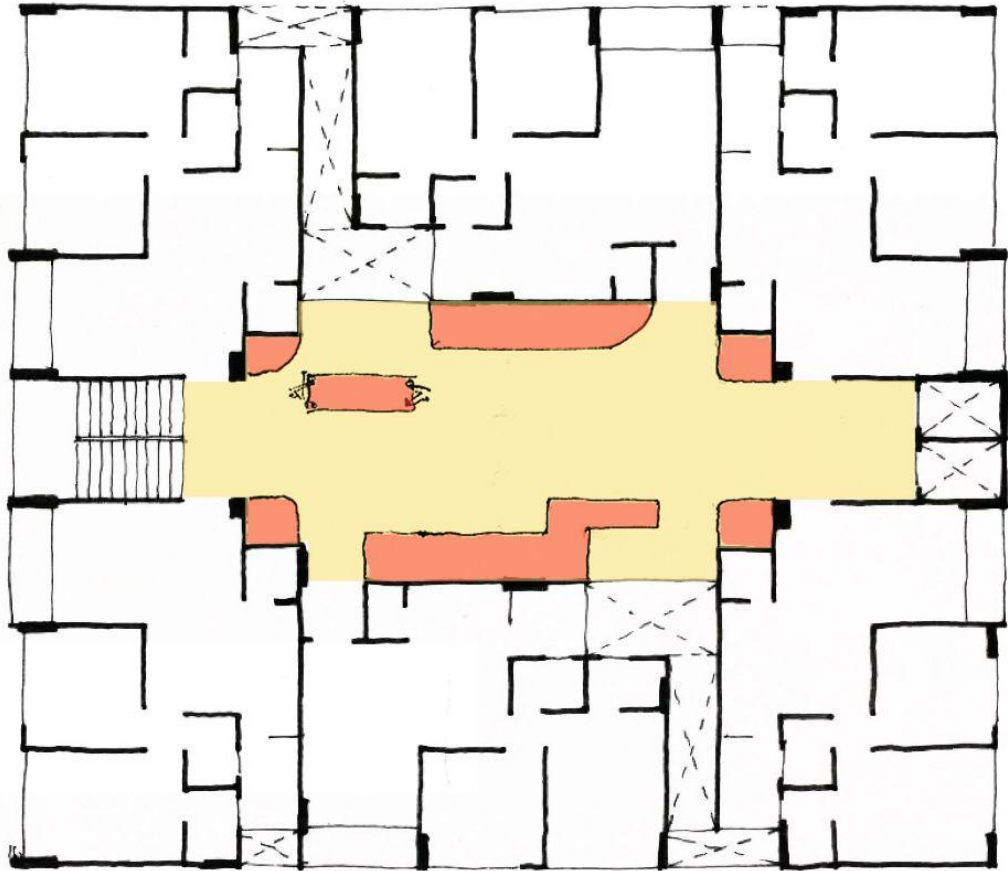


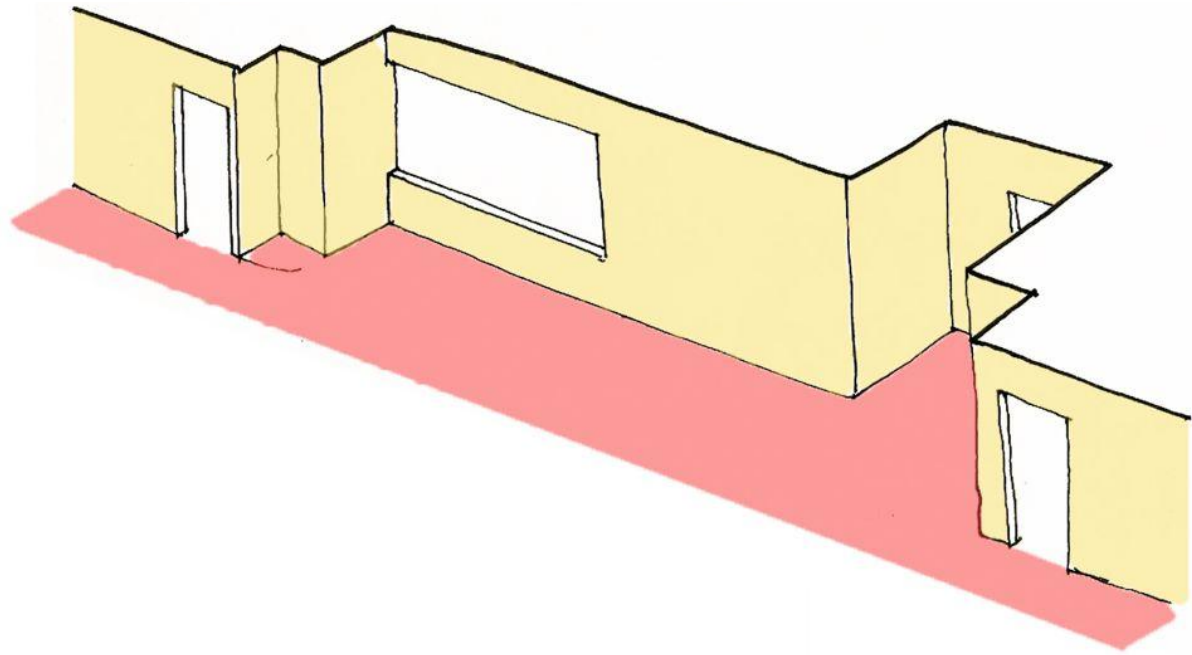


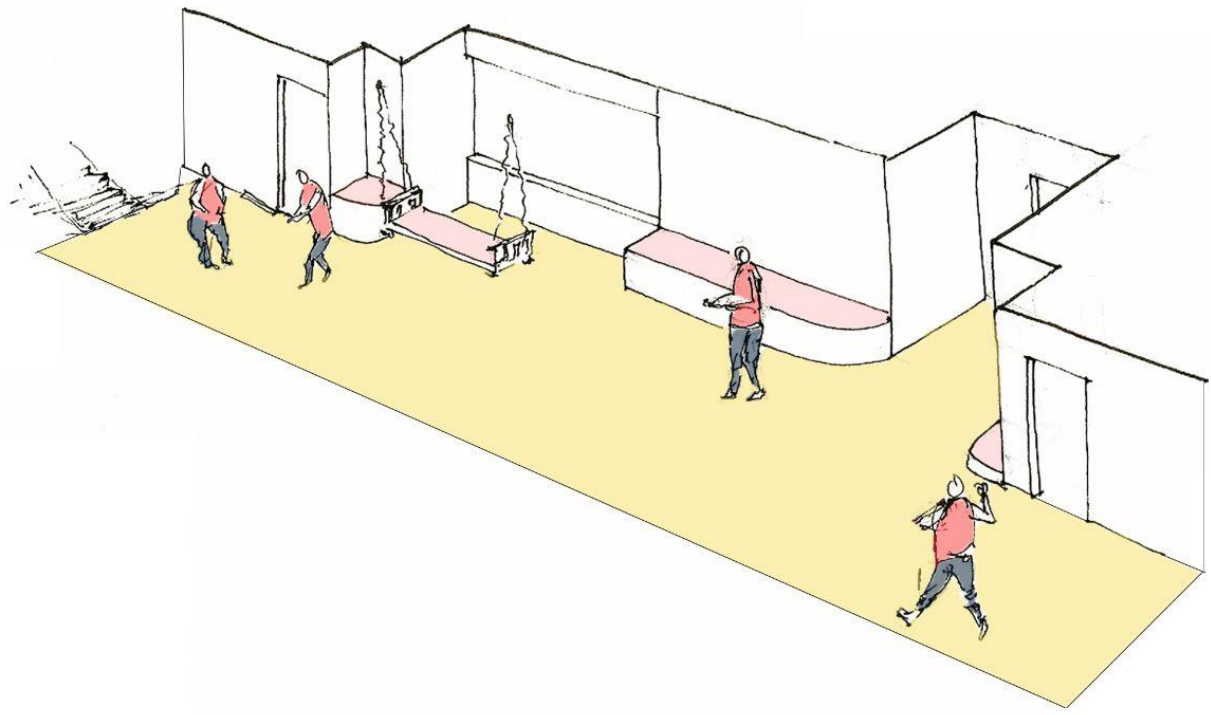
SHAGUN RESIDENCY











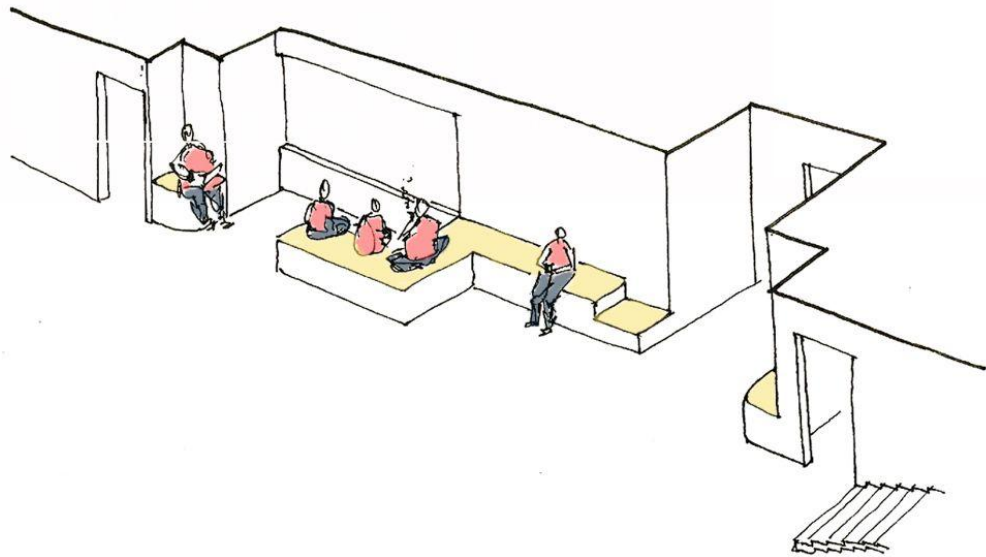
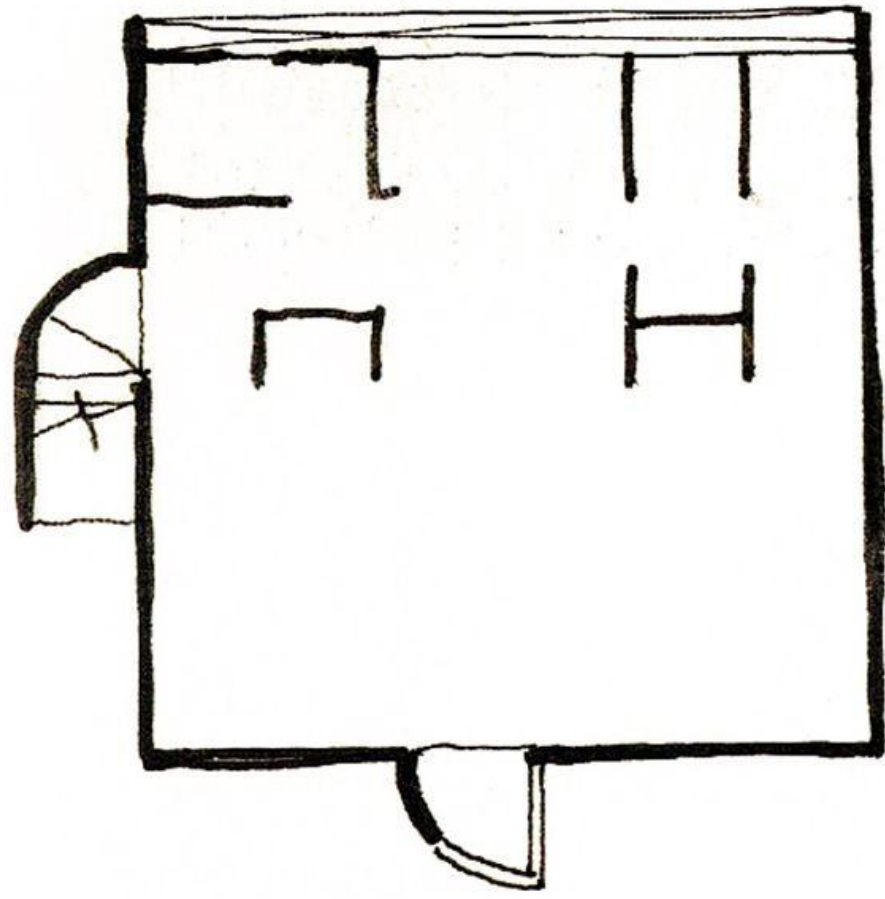
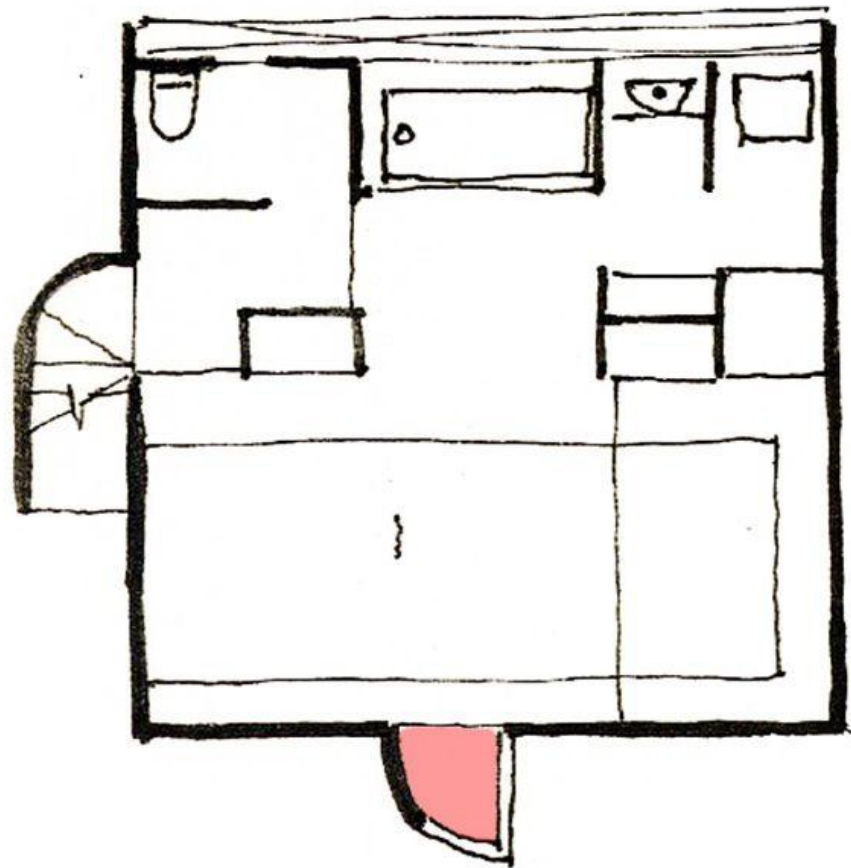


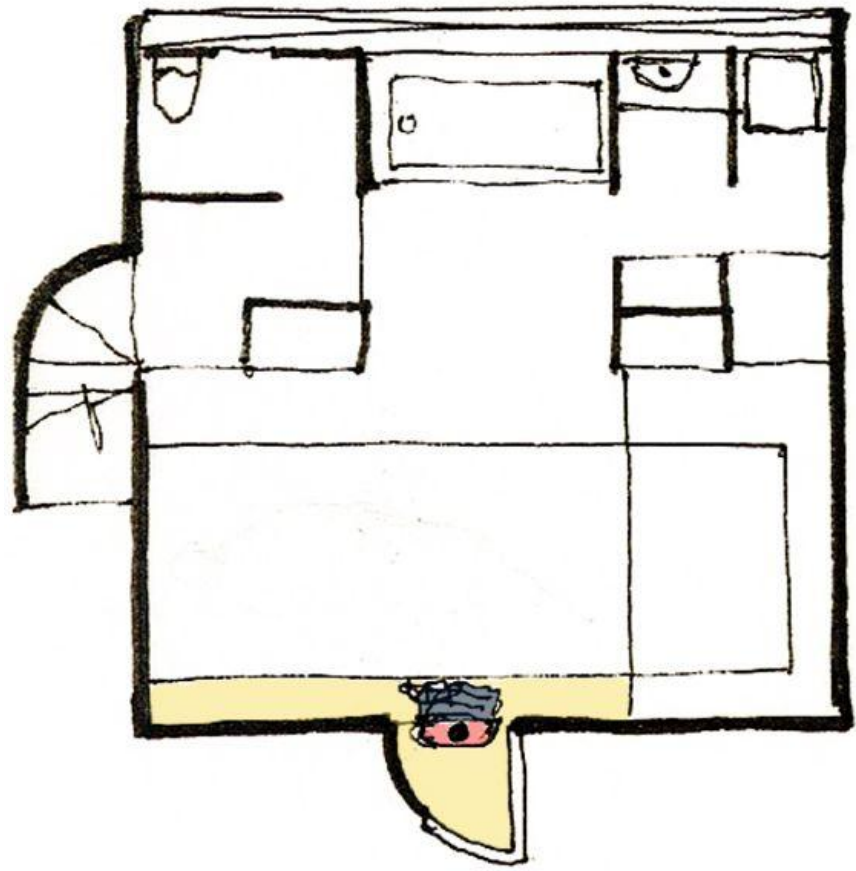
Figure 10.10

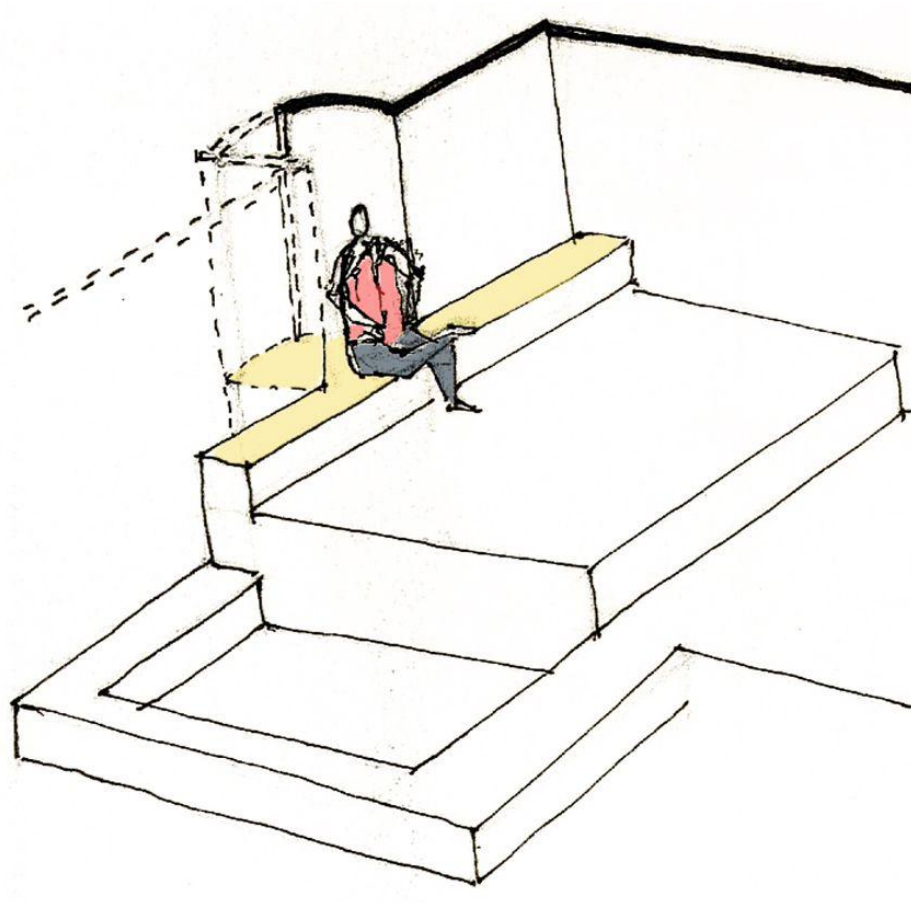
WALDEN 7











INTERPRETATION SEEN











Why do you think this is like otlá?

Why these are not popular?

Methods?

Other elements

What aspect you are reinterpretation (Cultural identity)

According to you what is jharookha?

What if these elements are not there in the house?

Why does these elements matter?

What does it mean

What is the core of that experience?

quality of jharookha!