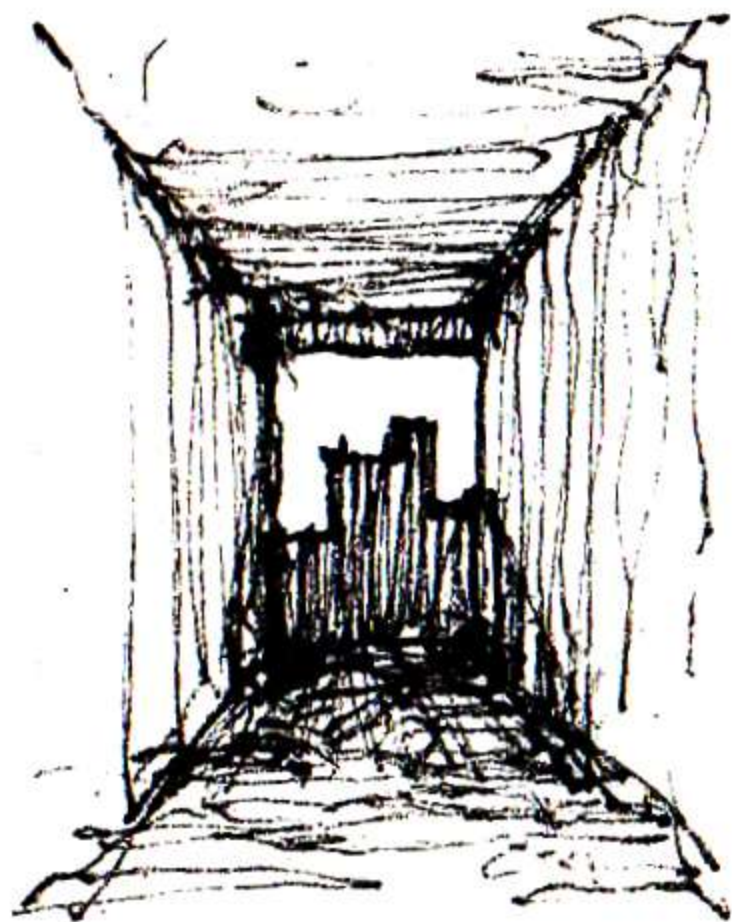


# ARANYA

USER MANUAL

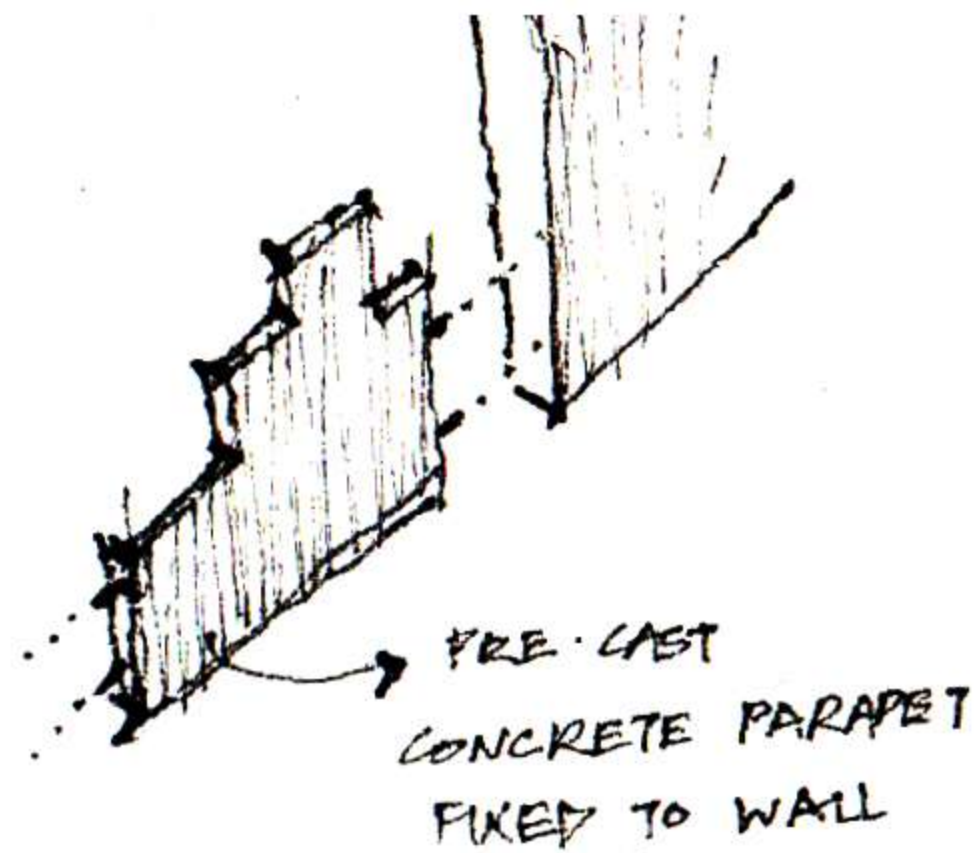




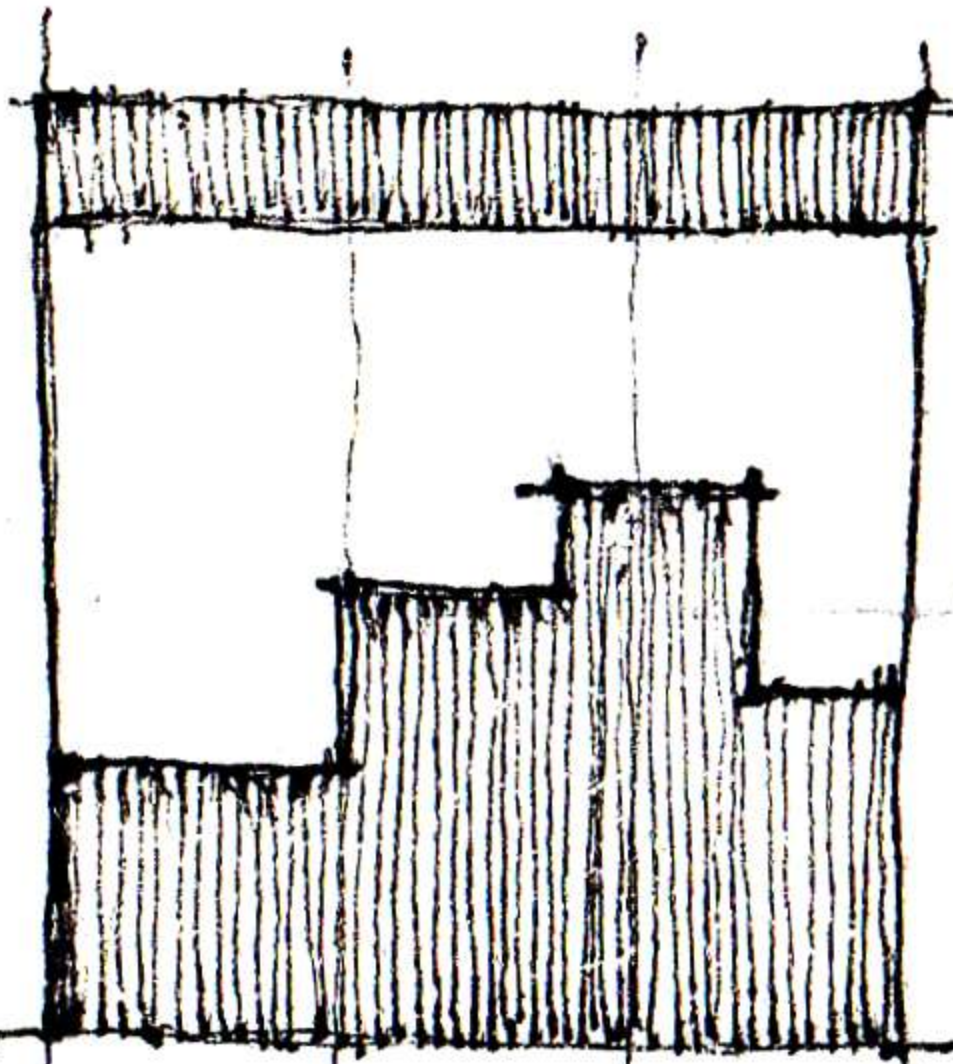
ELEVATION

→ FACADE

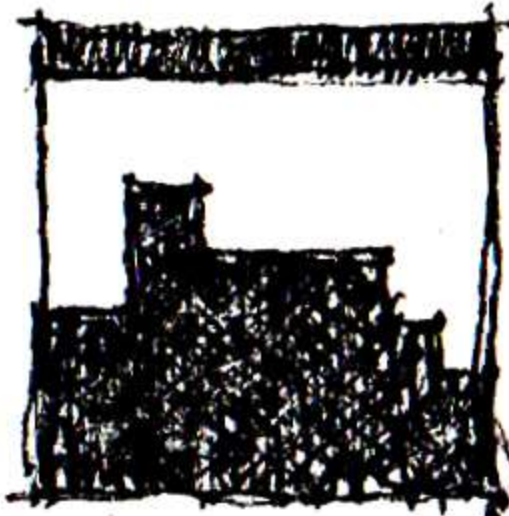
• SUBSTITUTION OF RAILINGS



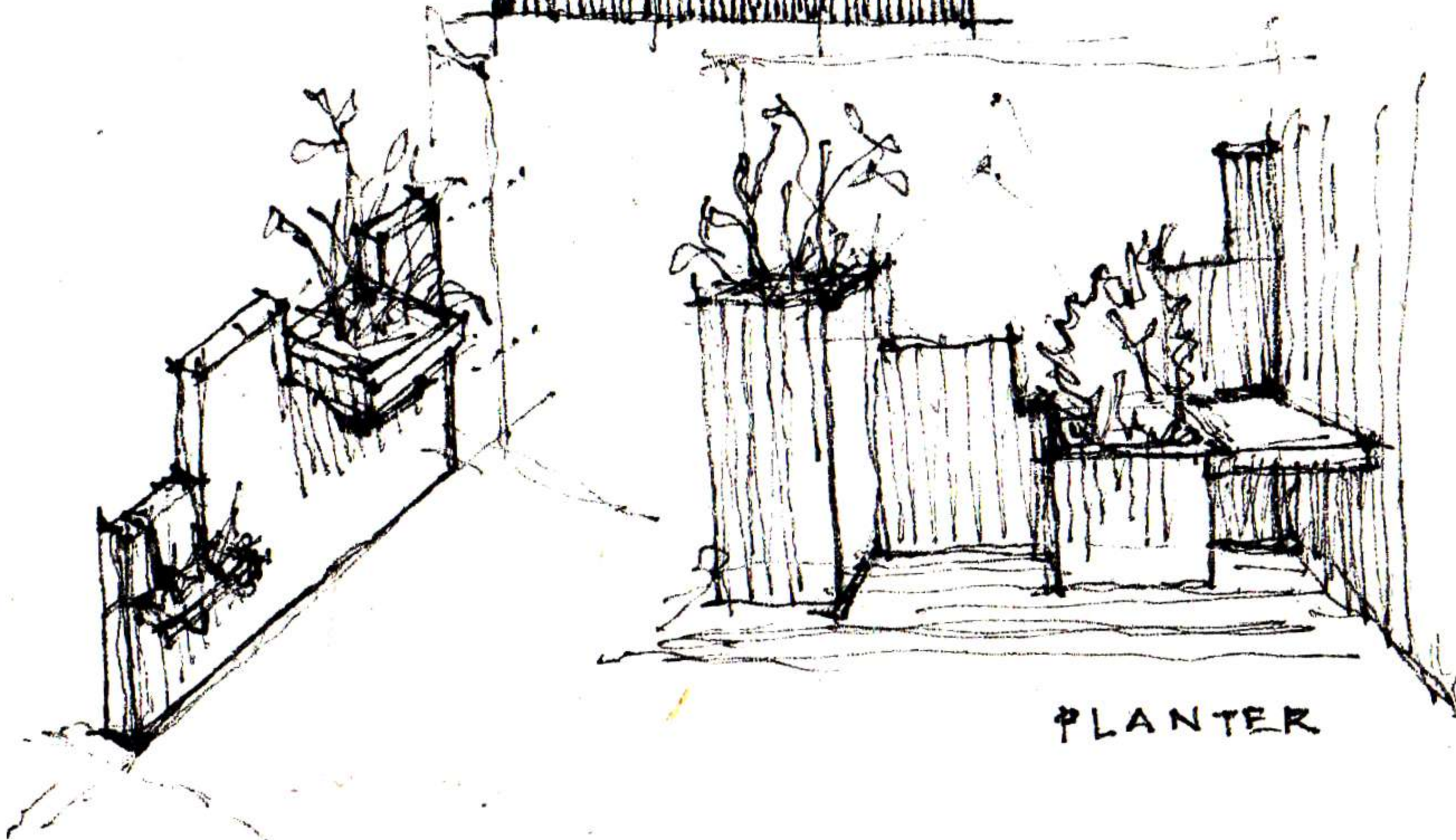
→ PRE-CAST  
CONCRETE PARAPET  
FIXED TO WALL



OPTIONS

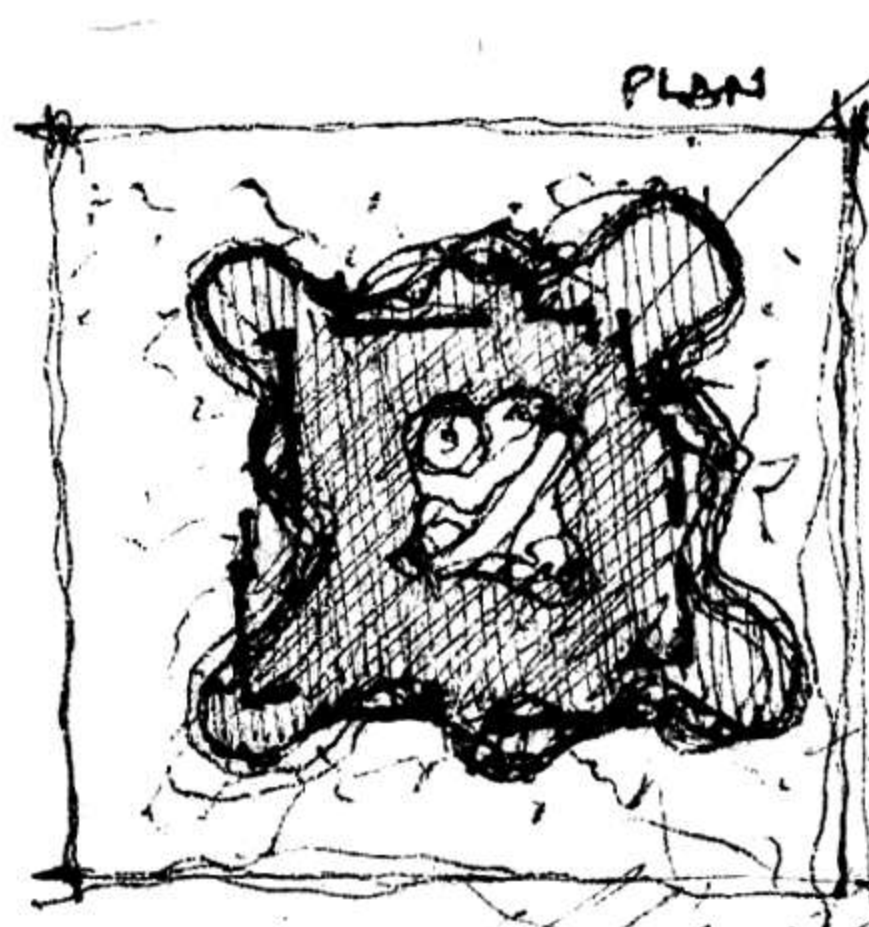


4.



PLANTER





PLAN

WALLS CREATE A PARTIAL ENCLOSURE IN THE PLOT

1.5M WALL TO BREAK THE VISUAL CONNECTION OF VEHICULAR MOVEMENT

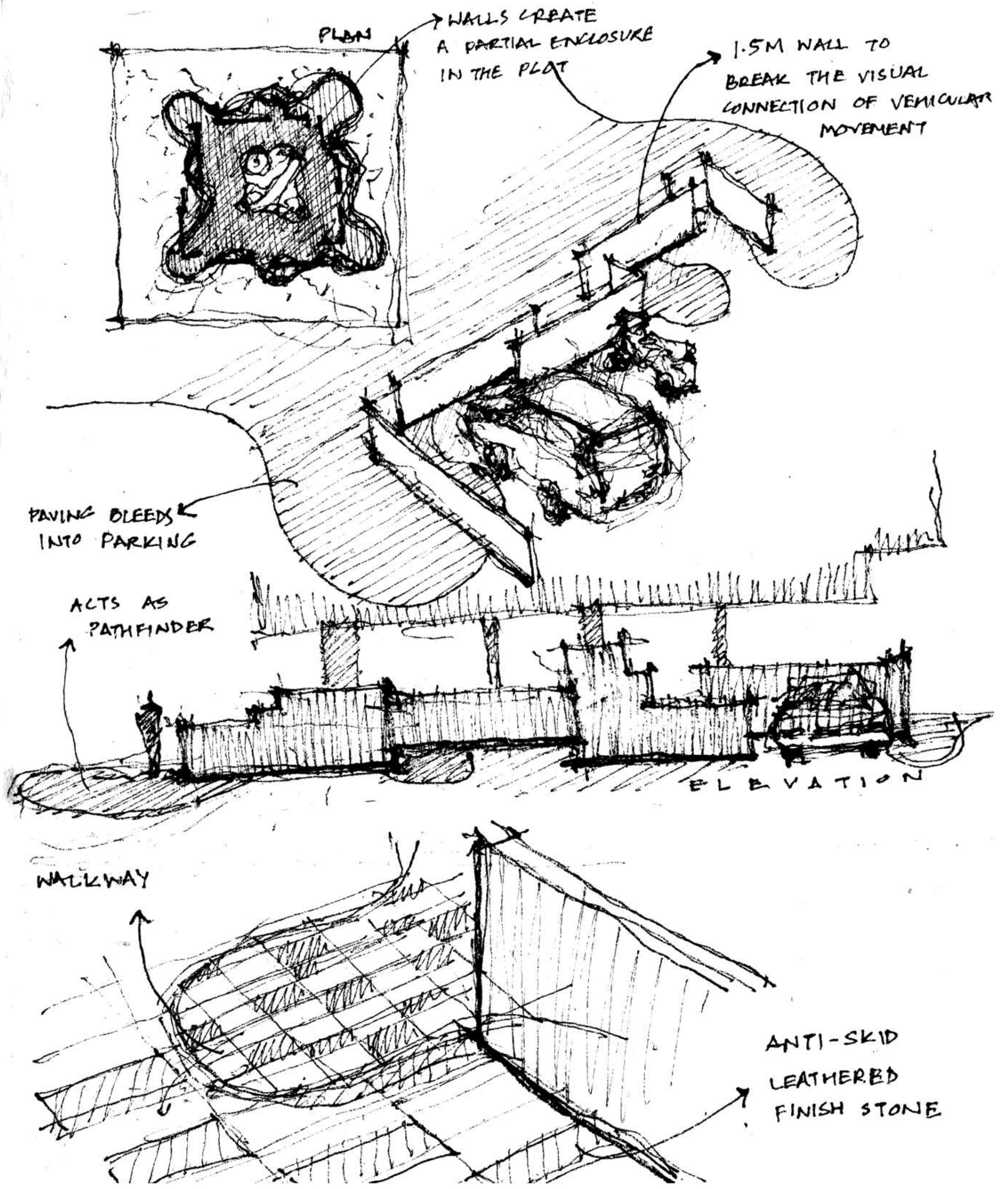
PAVING BLEEDS INTO PARKING

ACTS AS PATHFINDER

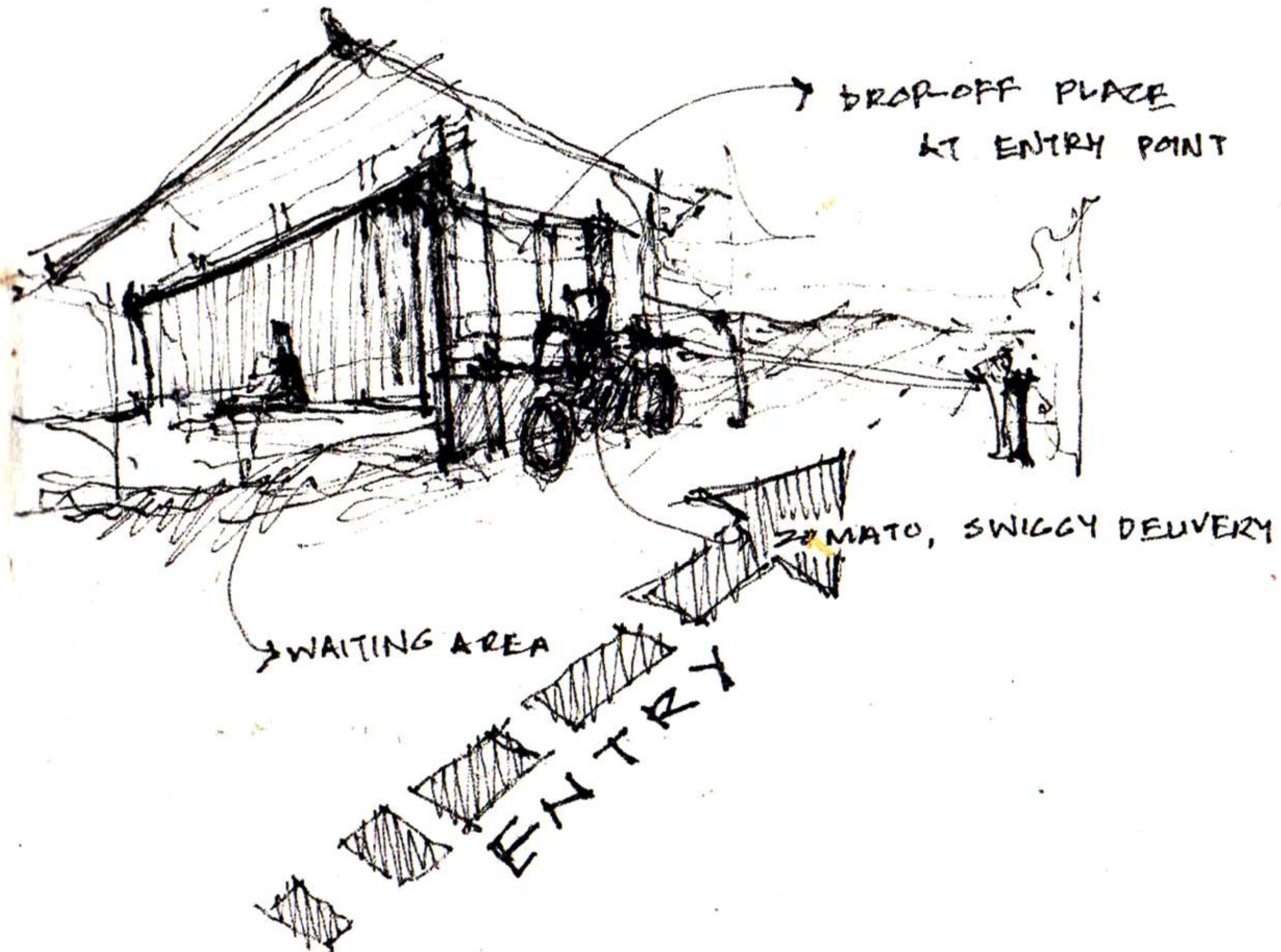
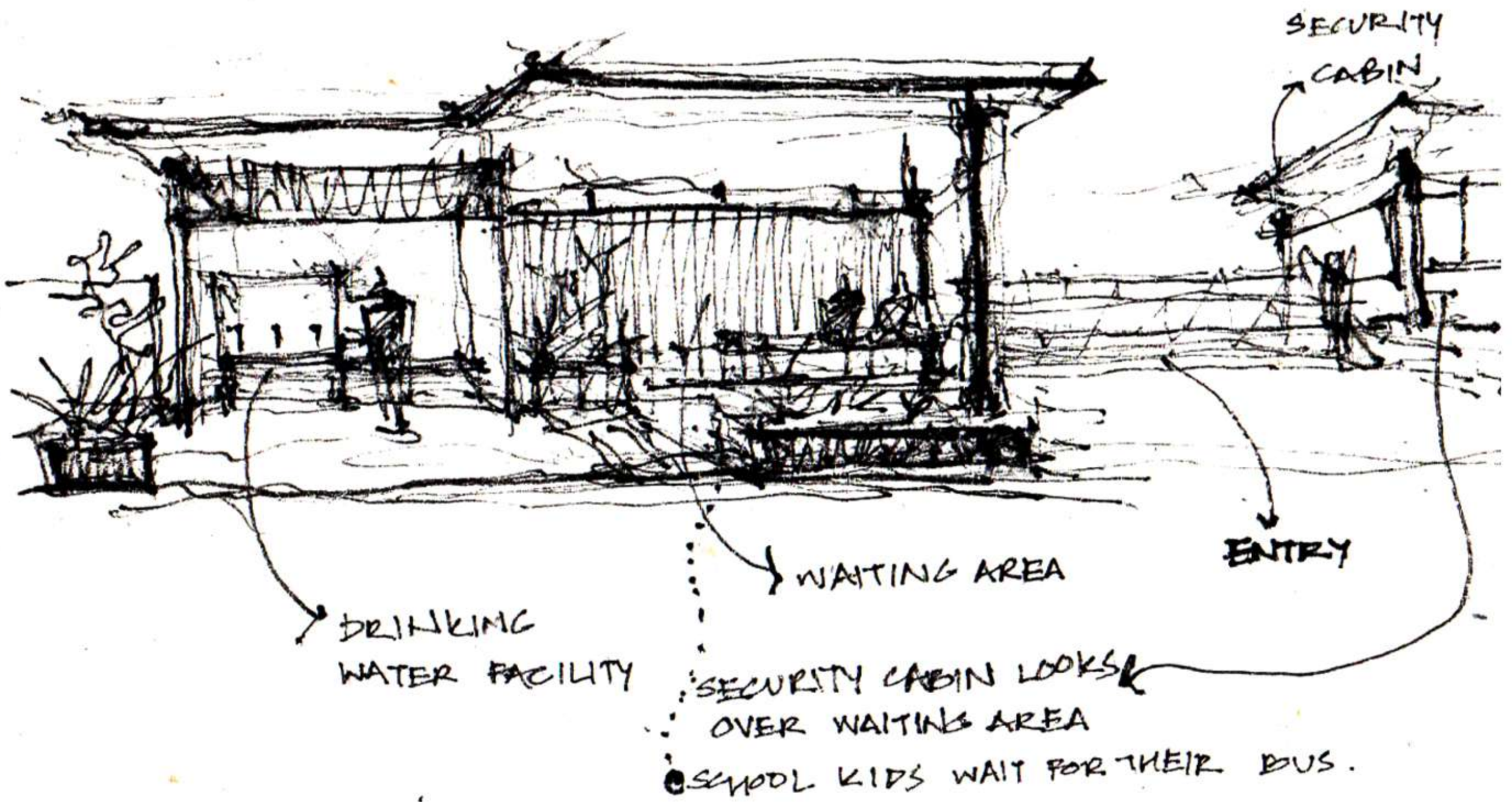
ELEVATION

WALKWAY

ANTI-SKID LEATHERED FINISH STONE

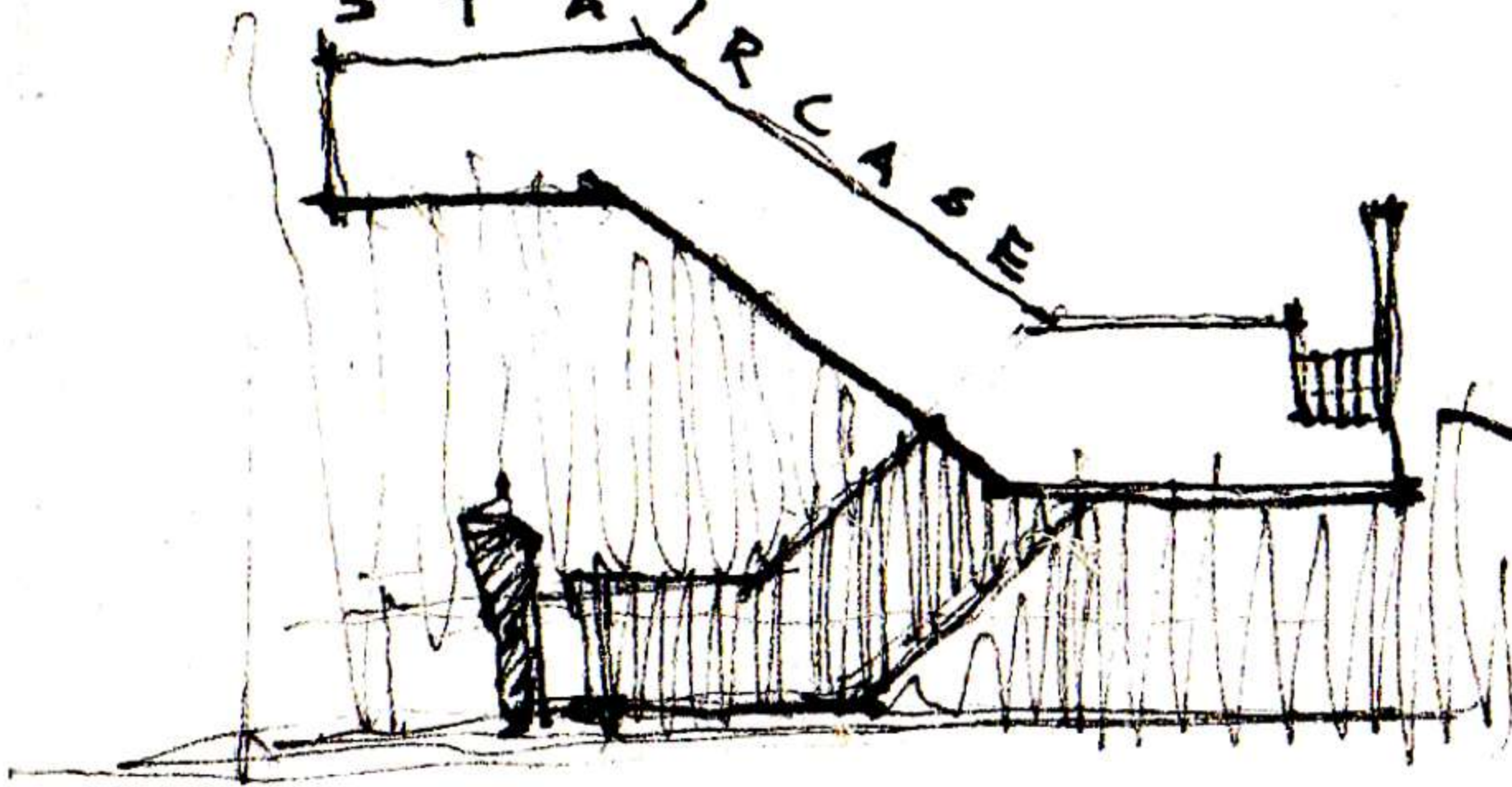






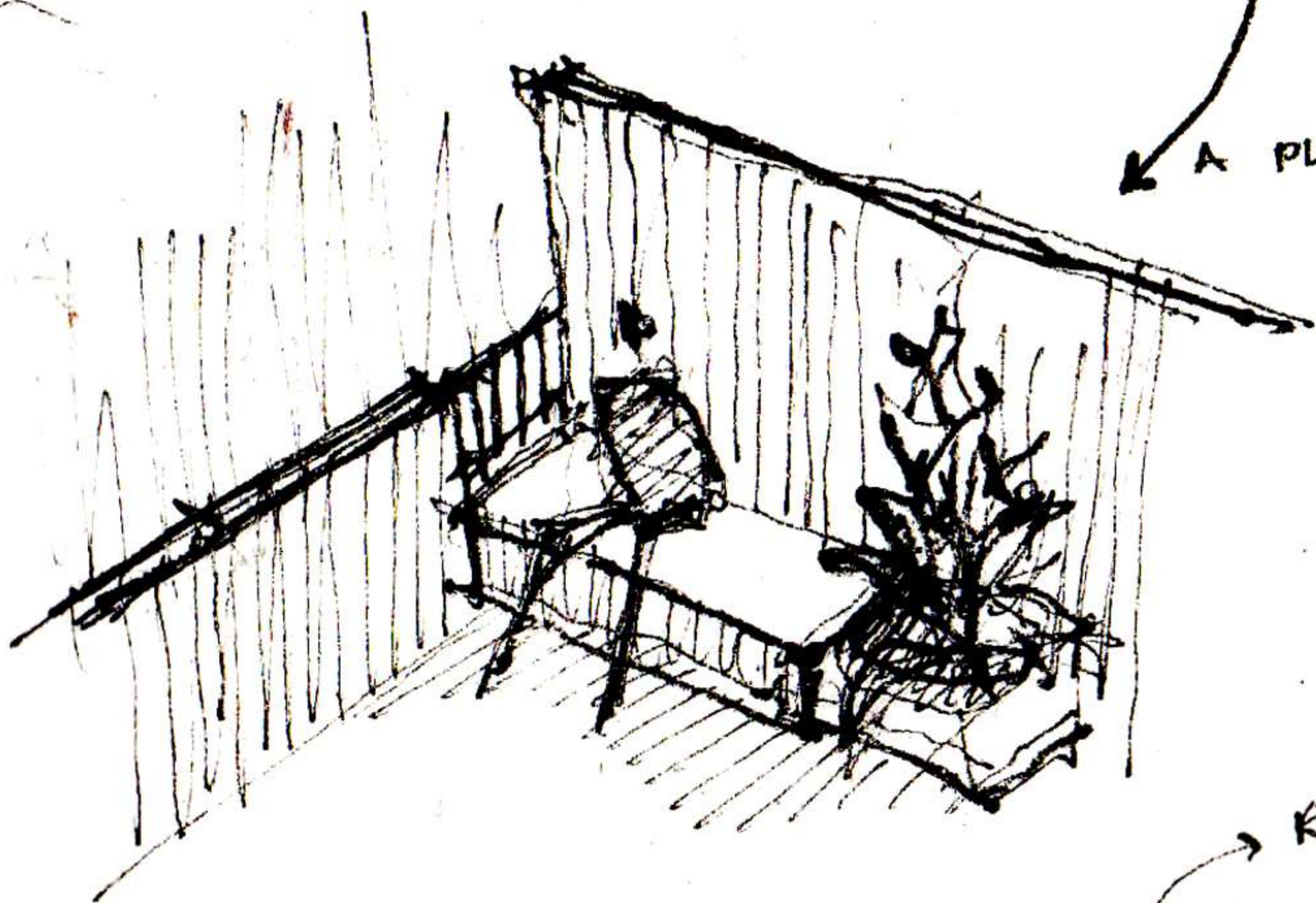


S T A I R C A S E



HOW LANDINGS  
CAN BE ARTICULATED  
AS SEATING SPACE

A PLACE TO TAKE A  
PAUSE.



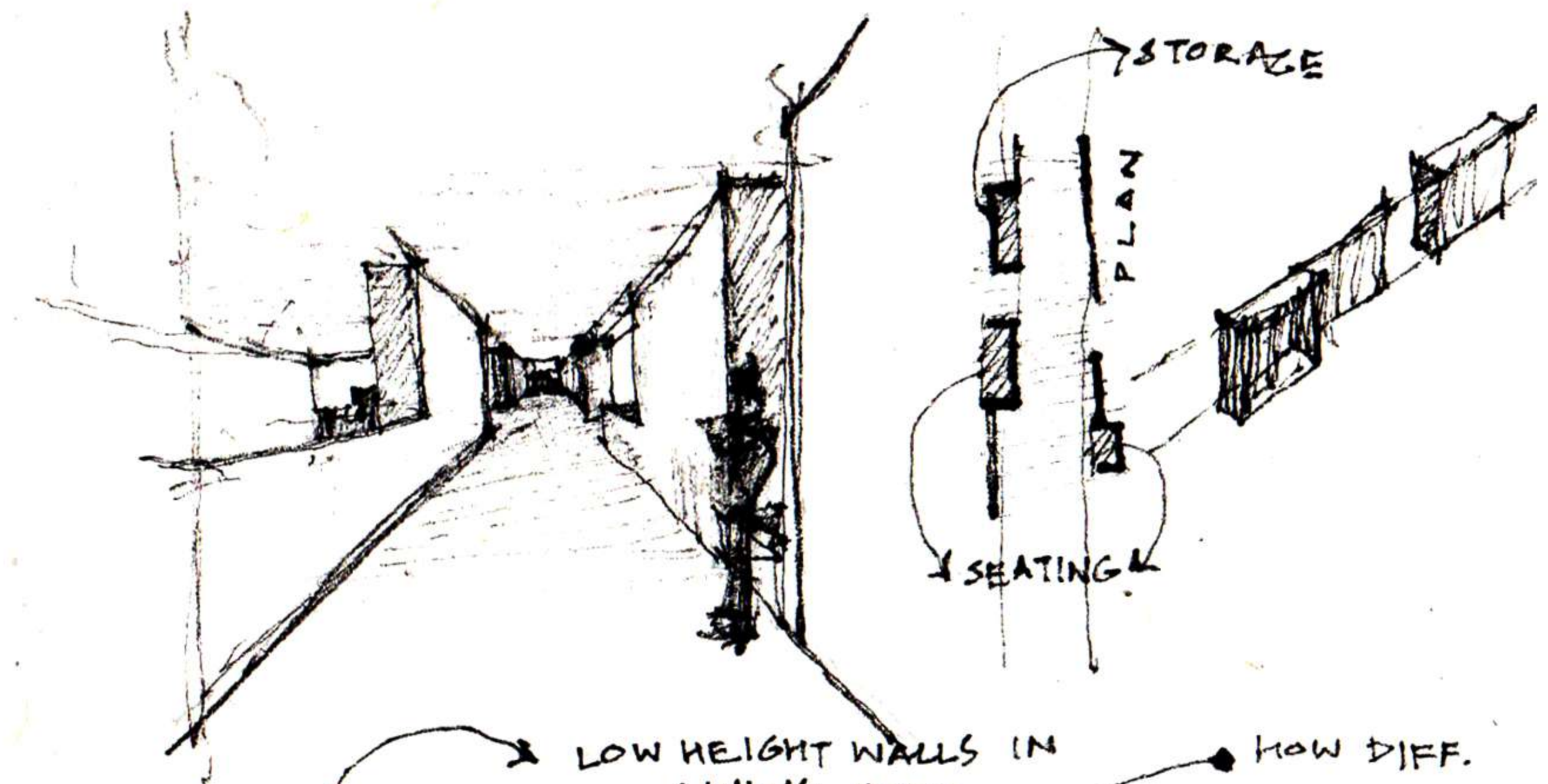
RAILING

PARAPET + RAILING

PARAPET







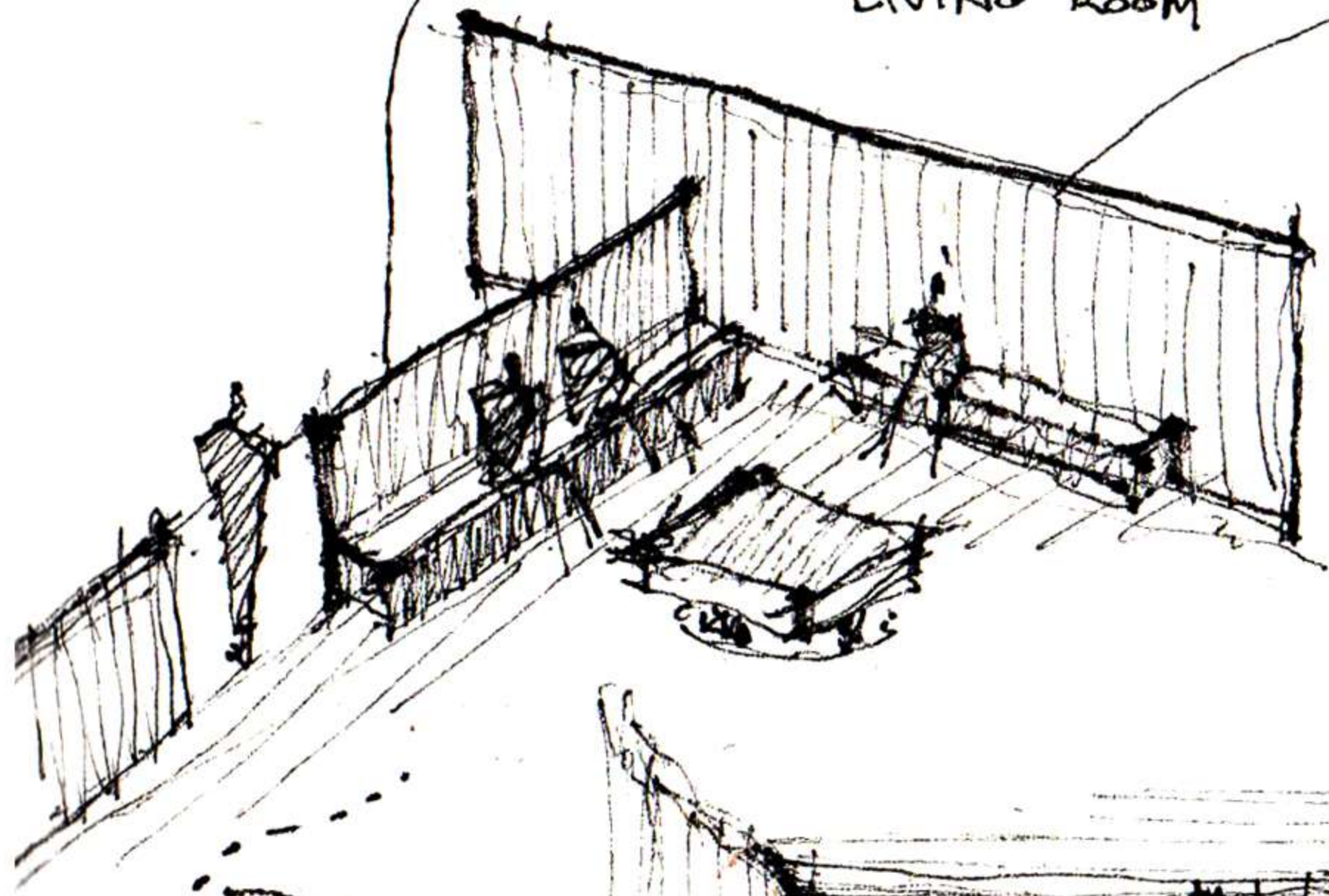
STORAGE

PLAN

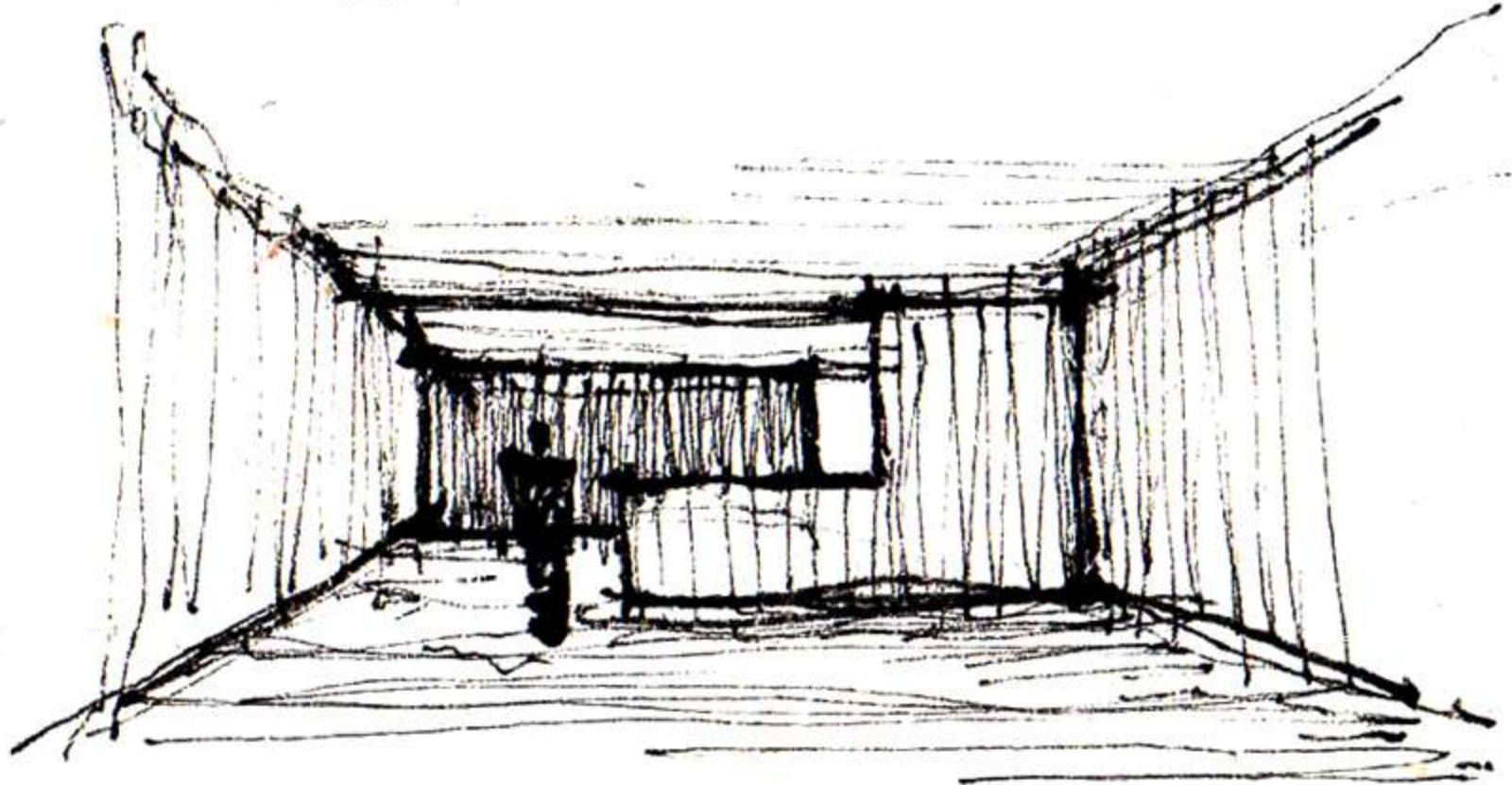
SEATING

LOW HEIGHT WALLS IN LIVING ROOM

HOW DIFF. HEIGHTS OF THE WALL CHANGE THE SPACE WITH THEIR FUNCTION.

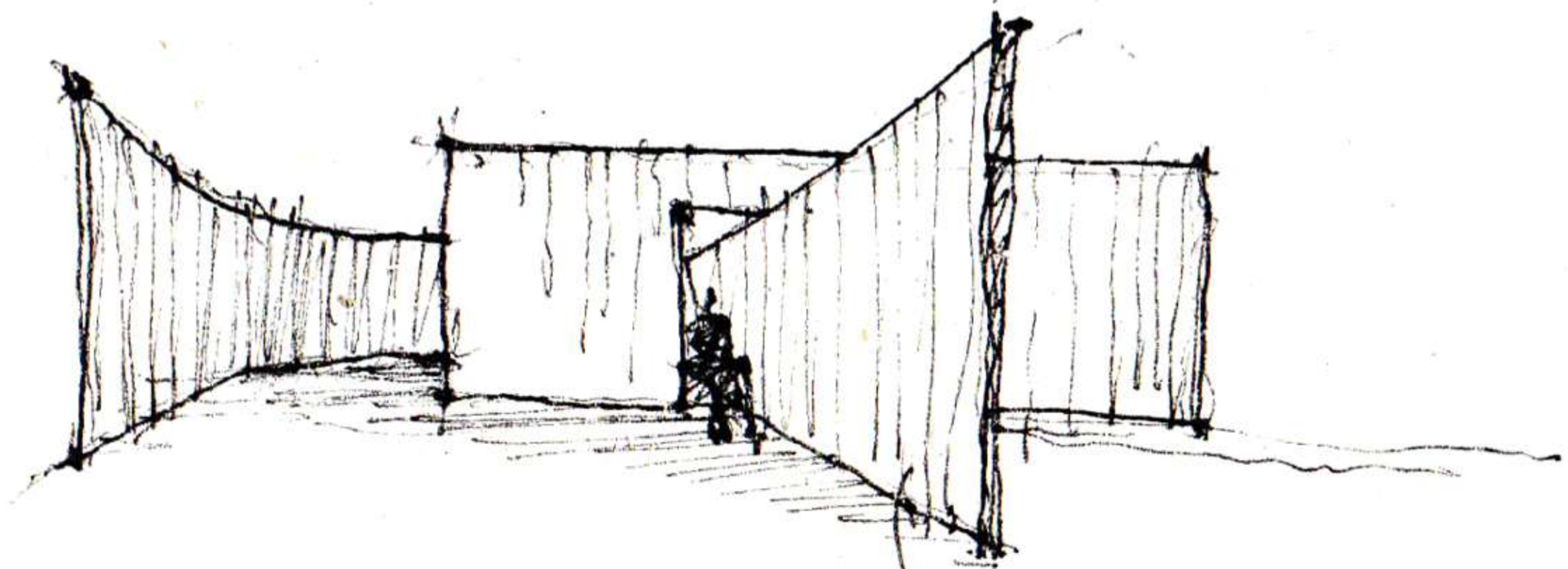


LAYERS

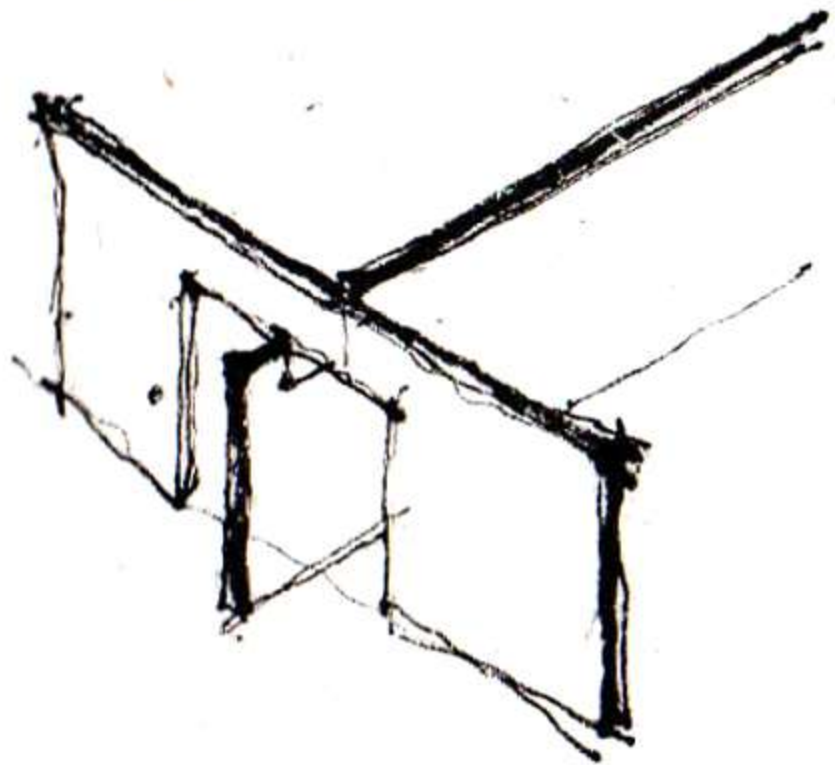




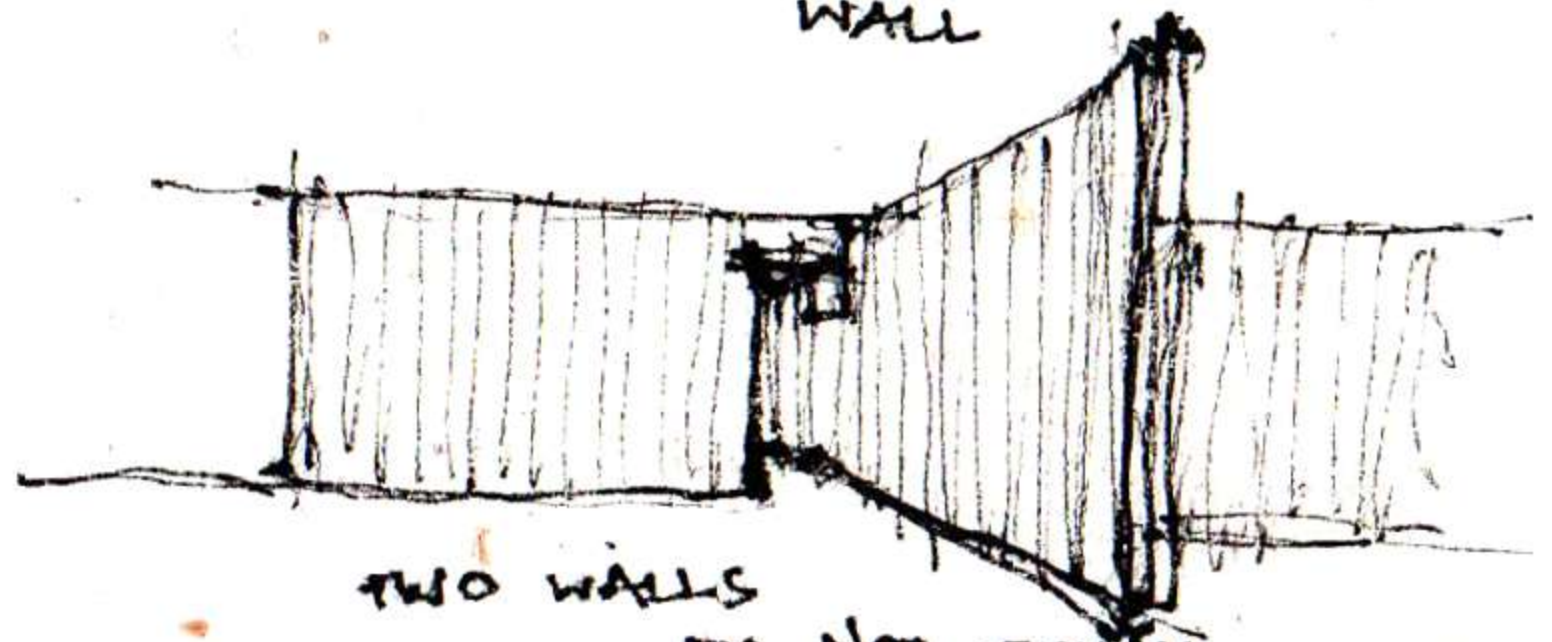
# WHAT HAPPENS WHEN TWO WALLS MEET ?



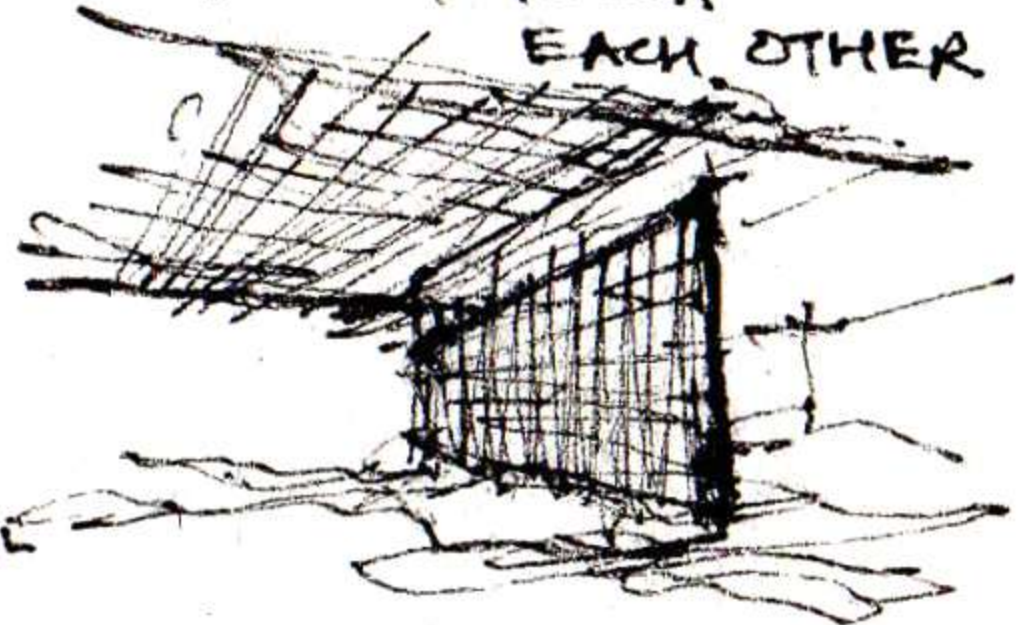
→ LOW HEIGHT WALL



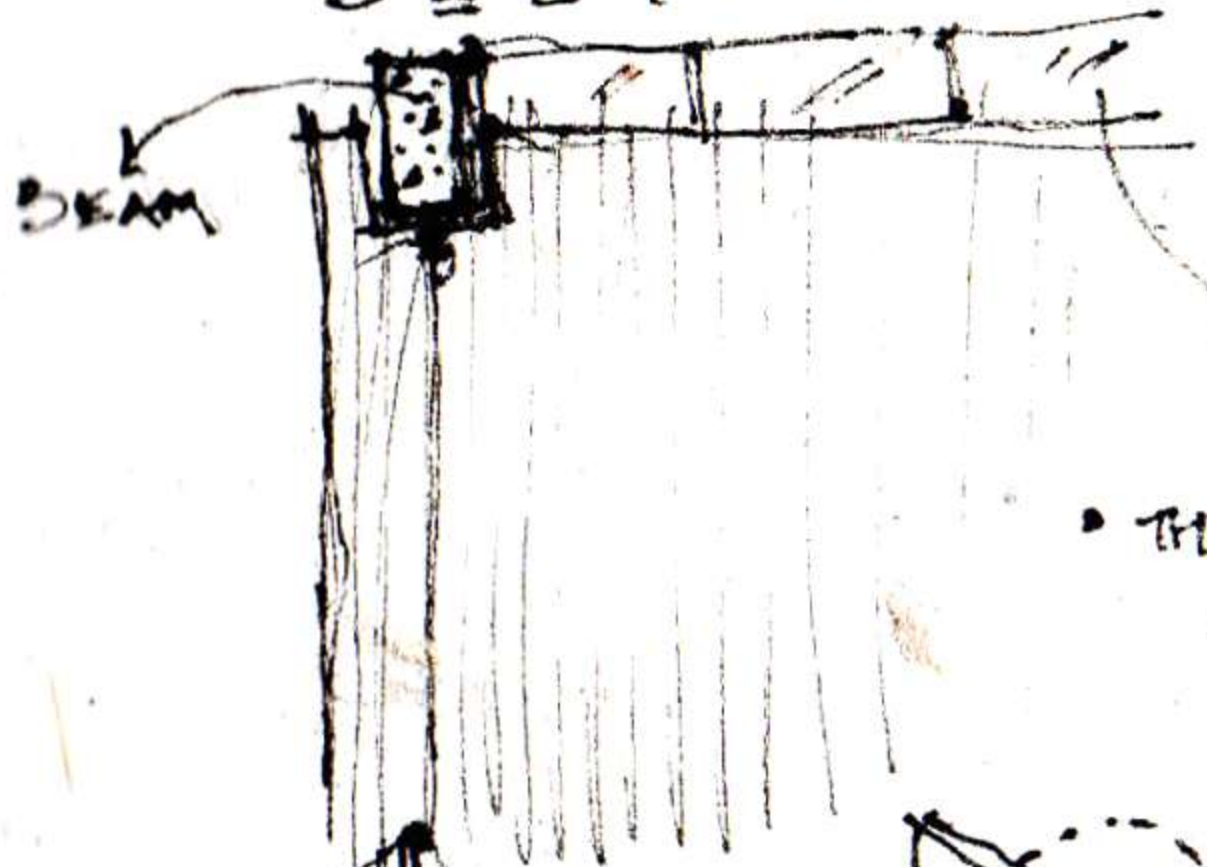
SECTION



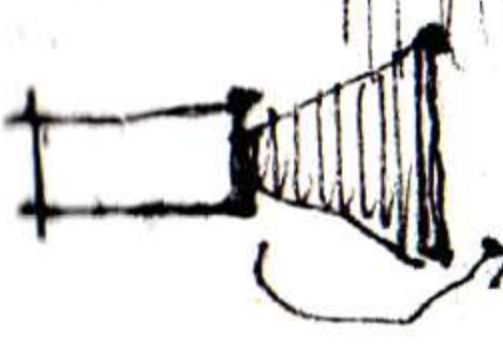
TWO WALLS DO NOT TOUCH EACH OTHER



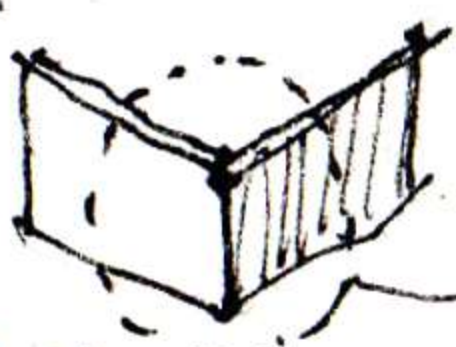
GLASS PANEL



• THE WALL DOES NOT TOUCH CEILING

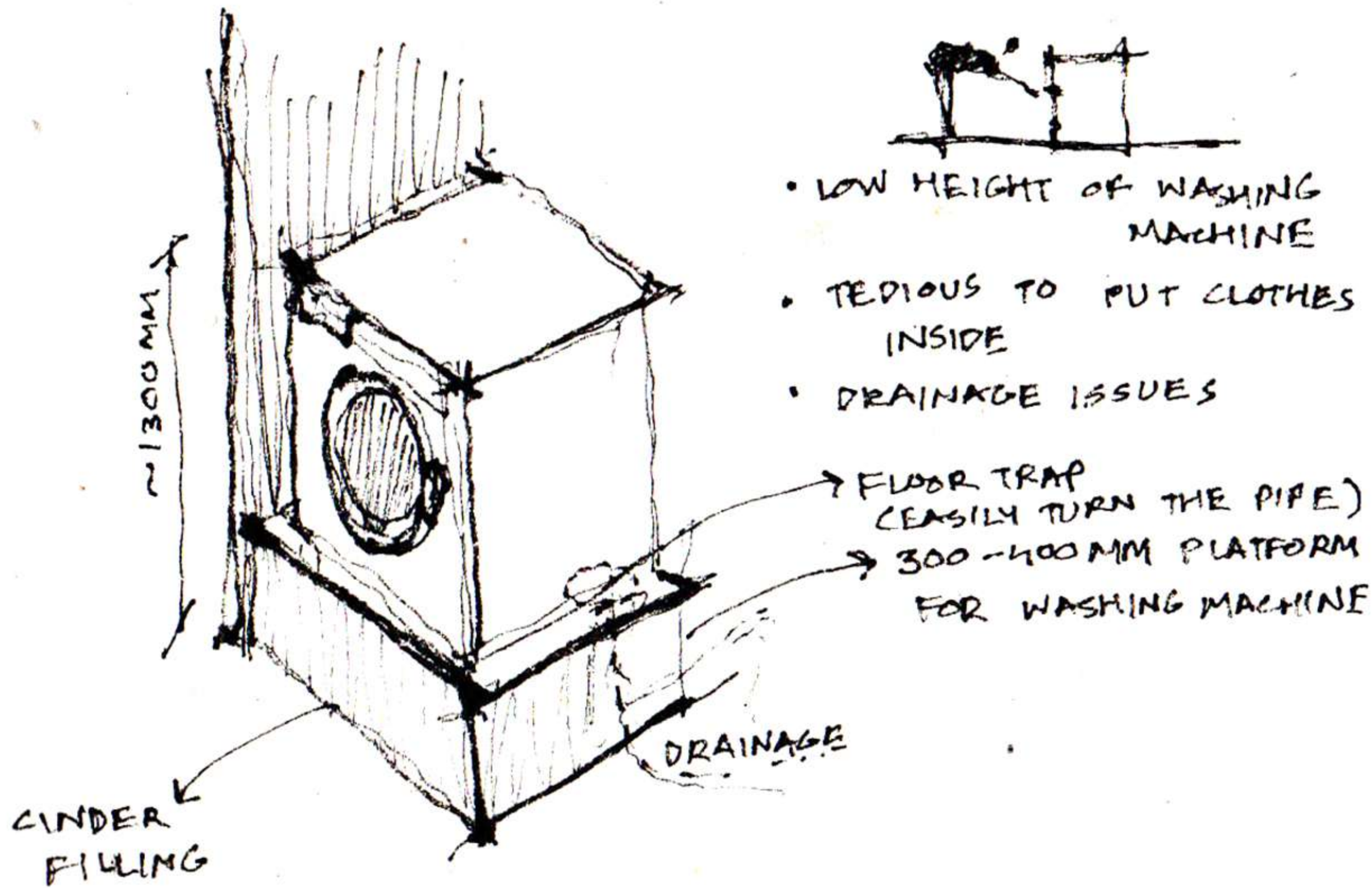


THEY ARE SEPARATED FOR LIGHT TO COME IN.

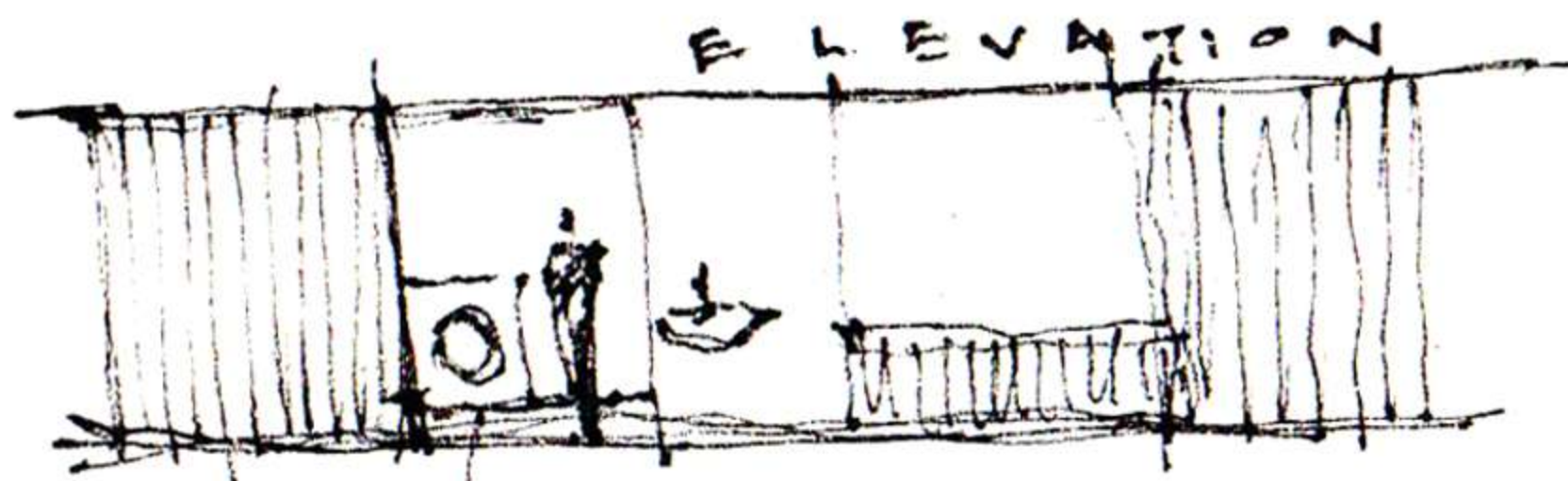


TWO WALL NEVER STICK TO EACH OTHER

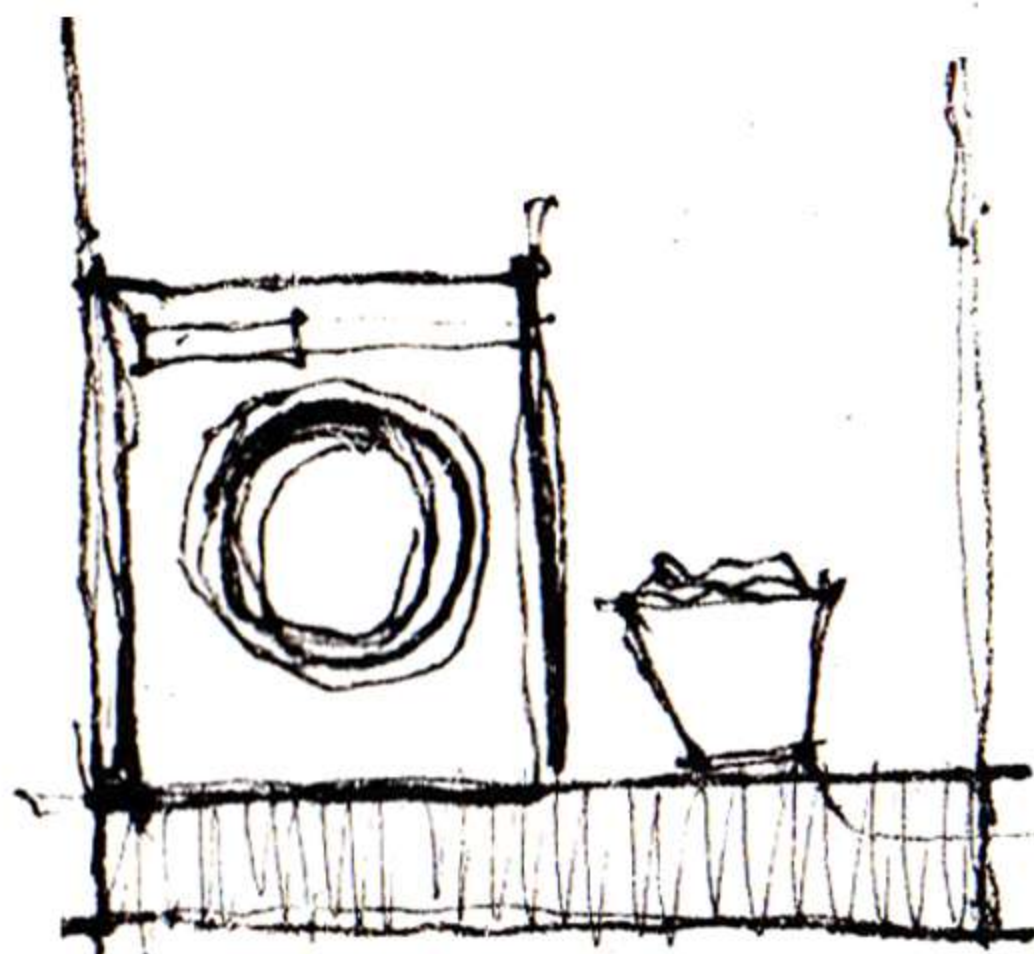




- LOW HEIGHT OF WASHING MACHINE
- TEDIOUS TO PUT CLOTHES INSIDE
- DRAINAGE ISSUES



→ OPTIMUM HEIGHT FOR WASHING MACHINE



SPACE FOR CLOTHES (COLLECTION)



