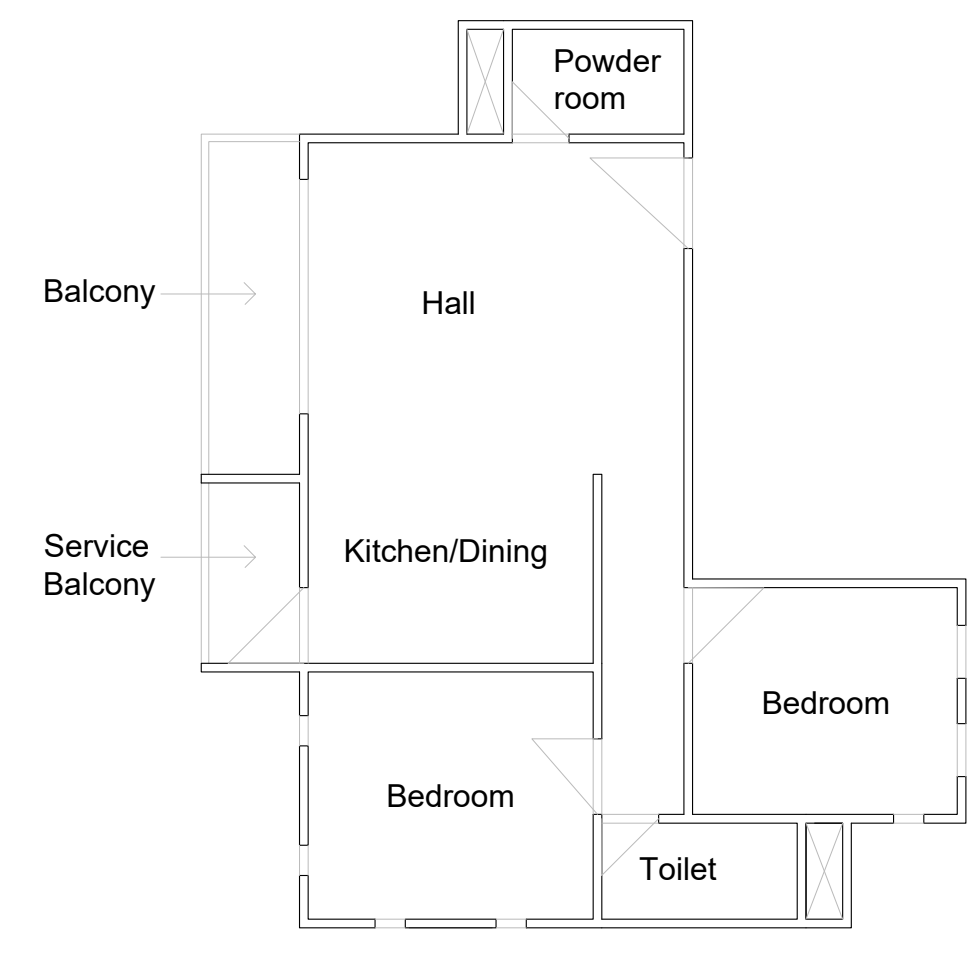
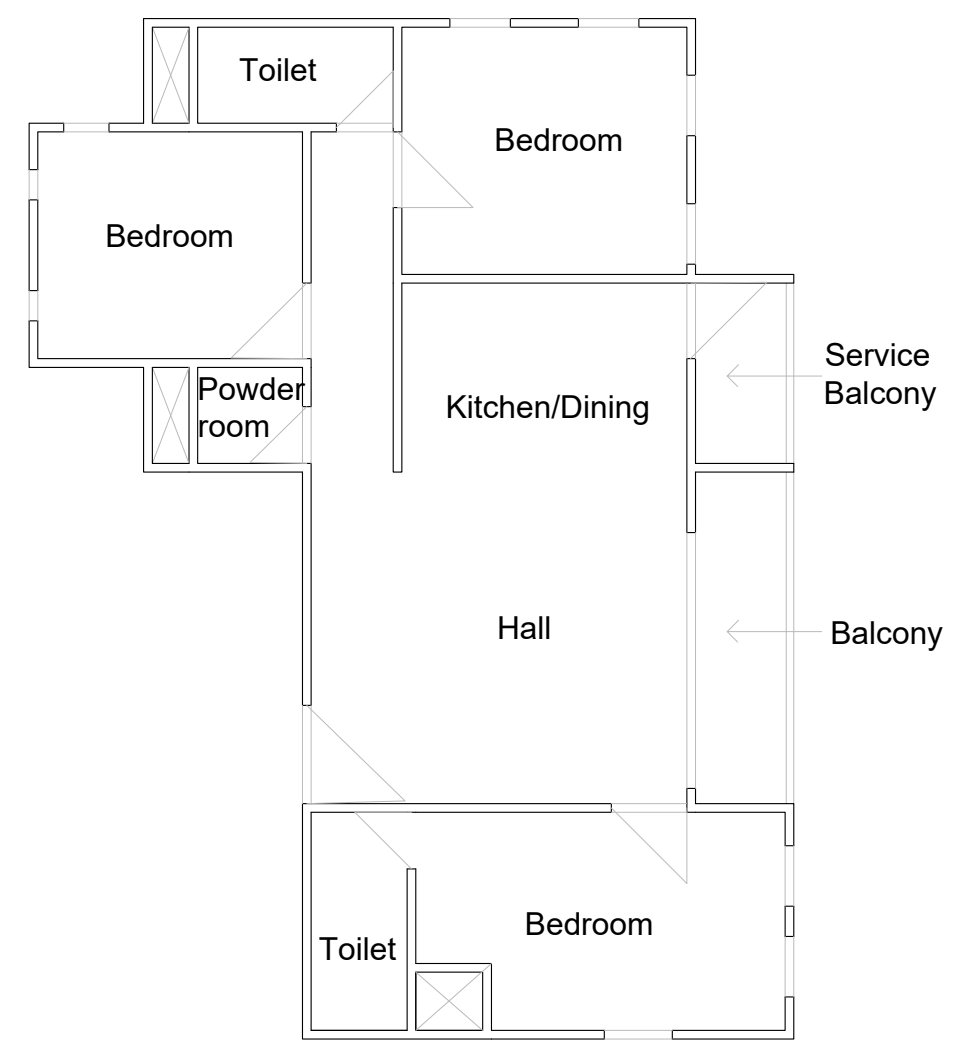


Block Plan
1:100



2BHK Unit Plan
1:100



3BHK Unit Plan
1:100

CALCULATIONS:

Carpet Area :
 2BHK -
 3BHK -
 One Block -
 Total -

Built-up Area :
 2BHK - 81.3 sq.m.
 3BHK - 103.4 sq.m.
 One Block - 1596 sq.m.
 Total - 3192 sq.m.

Super Built-up Area :
 One Floor - 320 sq.m.
 One Block - 1920 sq.m.
 Total - 3840 sq.m.

Utilised FSI - 1.6
 No. of Floors - 6
 No. of units - 36

