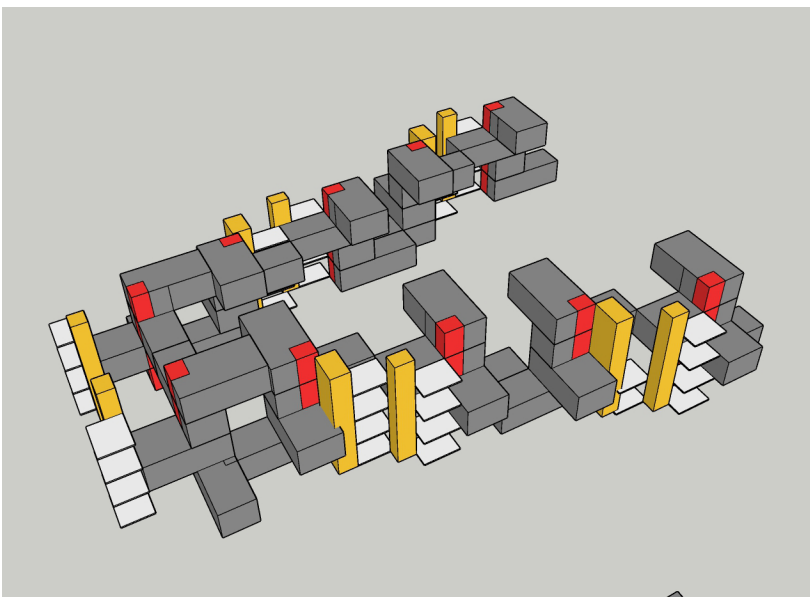
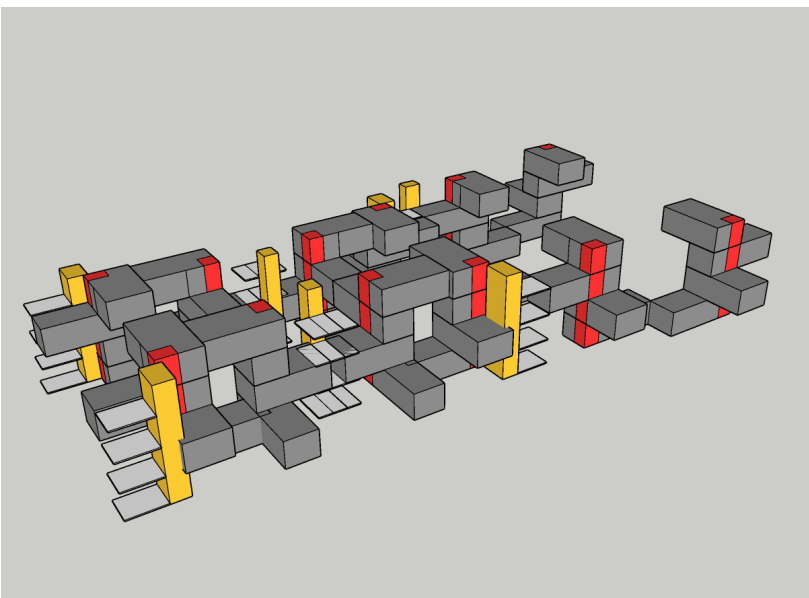
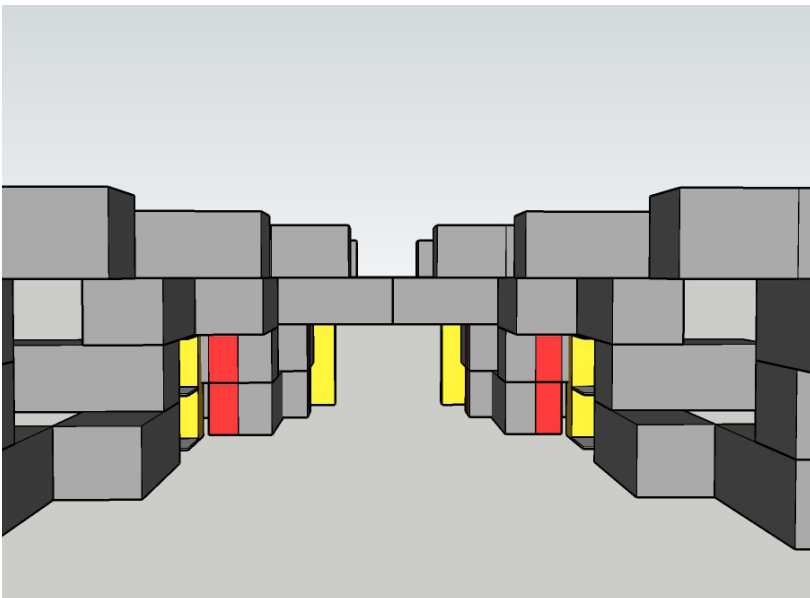
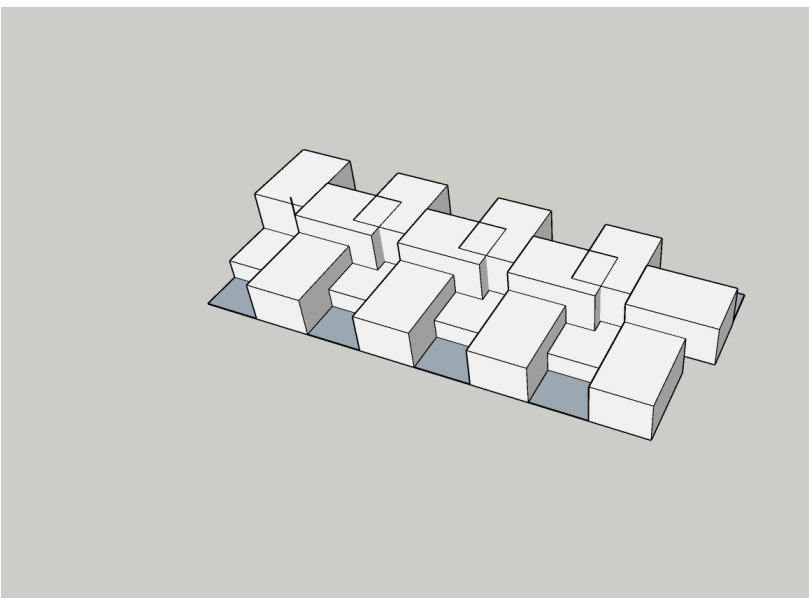
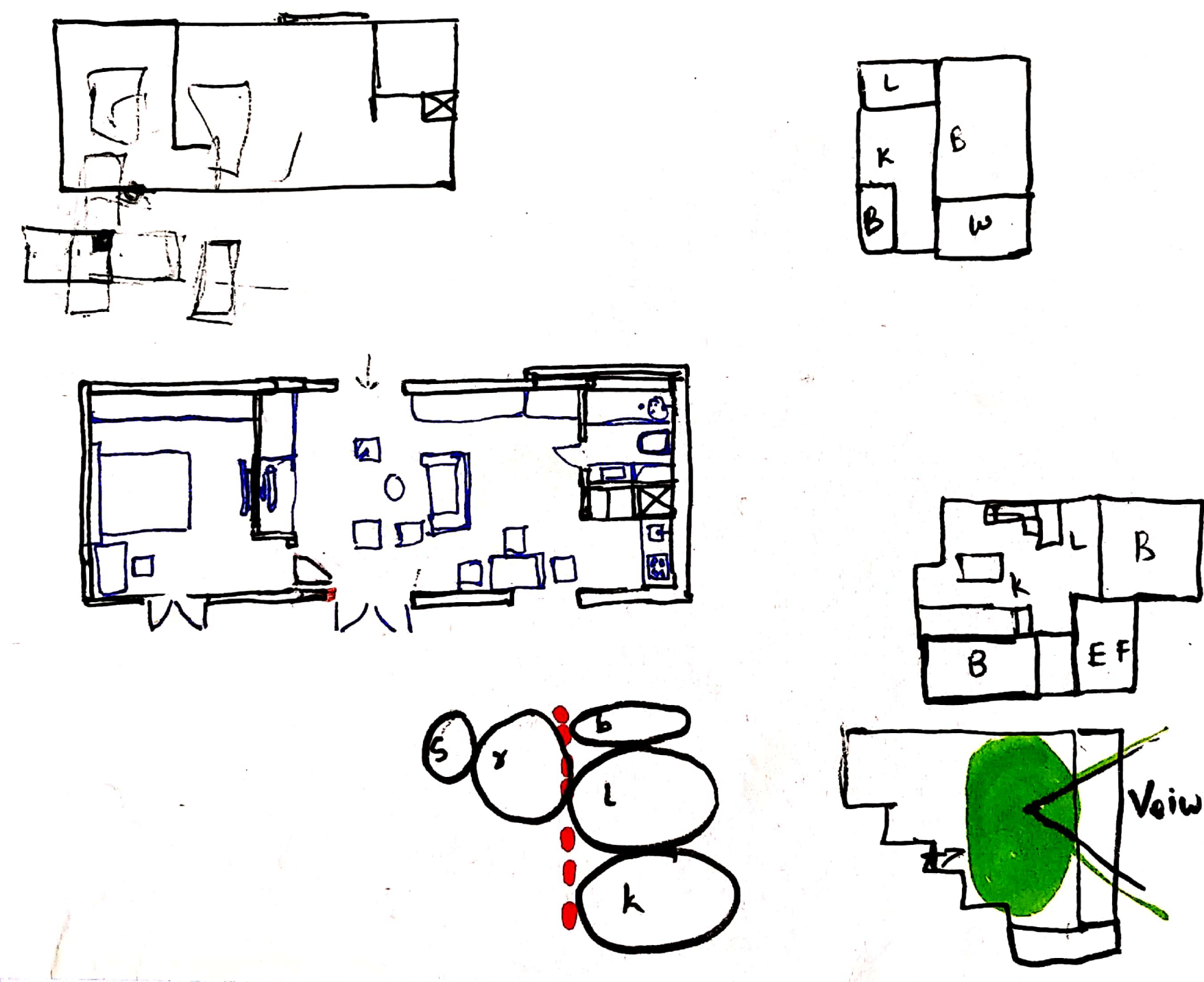


TIME PROBLEM 3

PROCESS

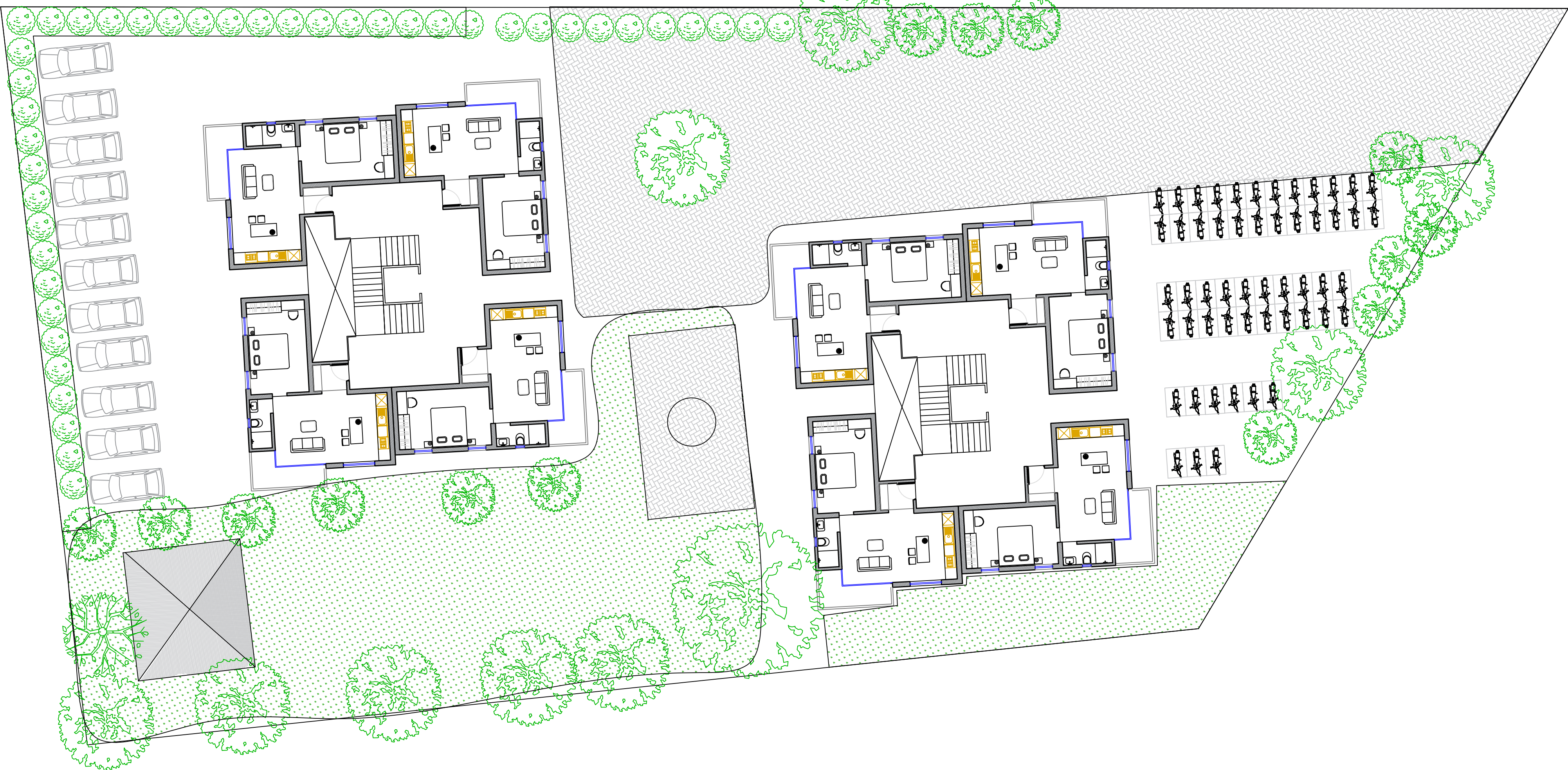


Process diagramme
Idea was to have terraces and interactive places and some community spaces but area is considering more didnt able to do it.

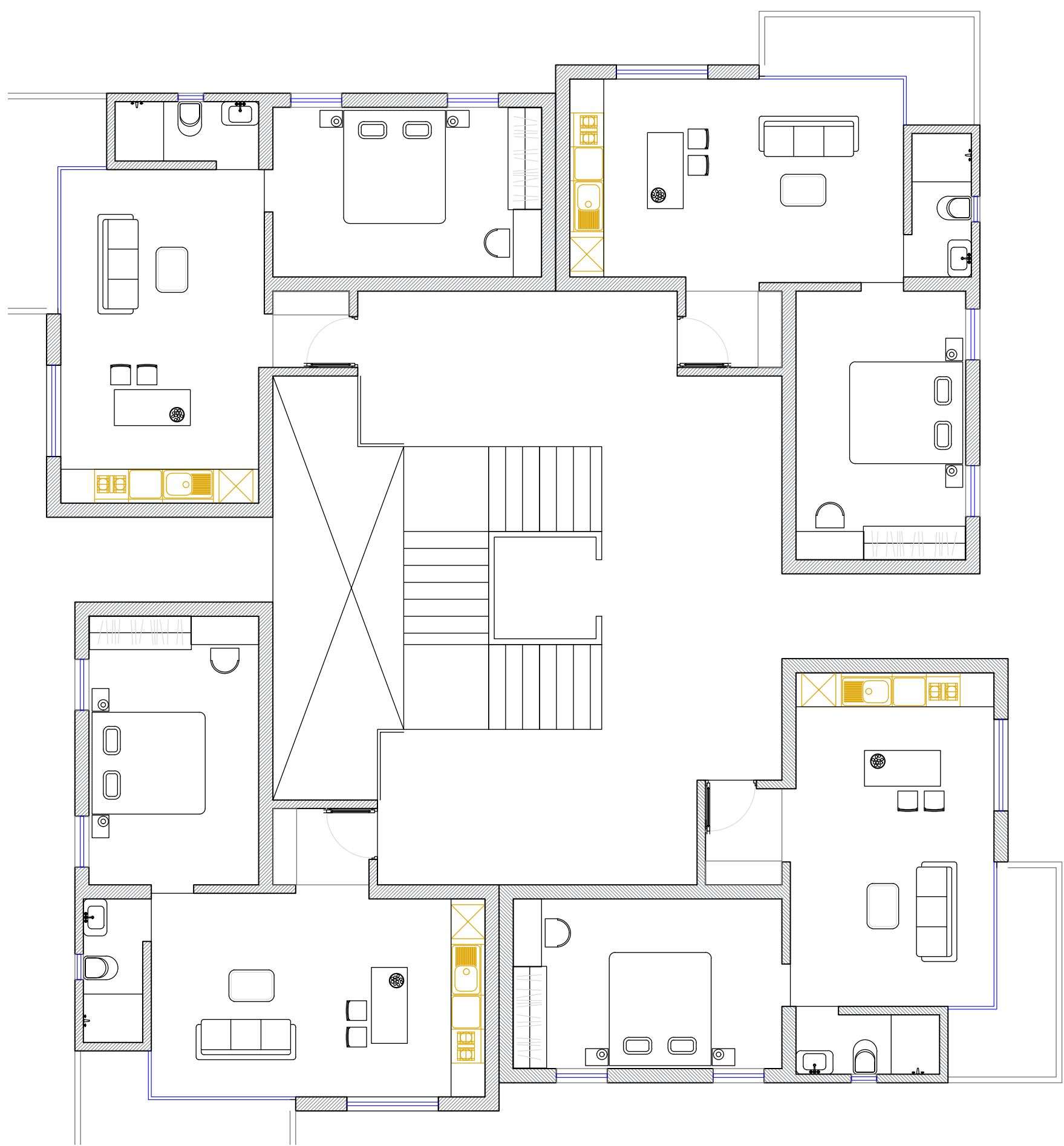
Total site area = 2894 sqm
common plot area = 480 sq m
2 tower blocks
1 block = G+6
1 floor = 4 unit
1 floor area = 230 sq m
1 block area = 1380 sq m
total used area = 2760 sq m
Carpet area of unit = 41 sq m
Built up area of unit = 52 sq m
super built up for 1 floor = 262 sq mt



SITE PLAN WITH GROUND FLOOR



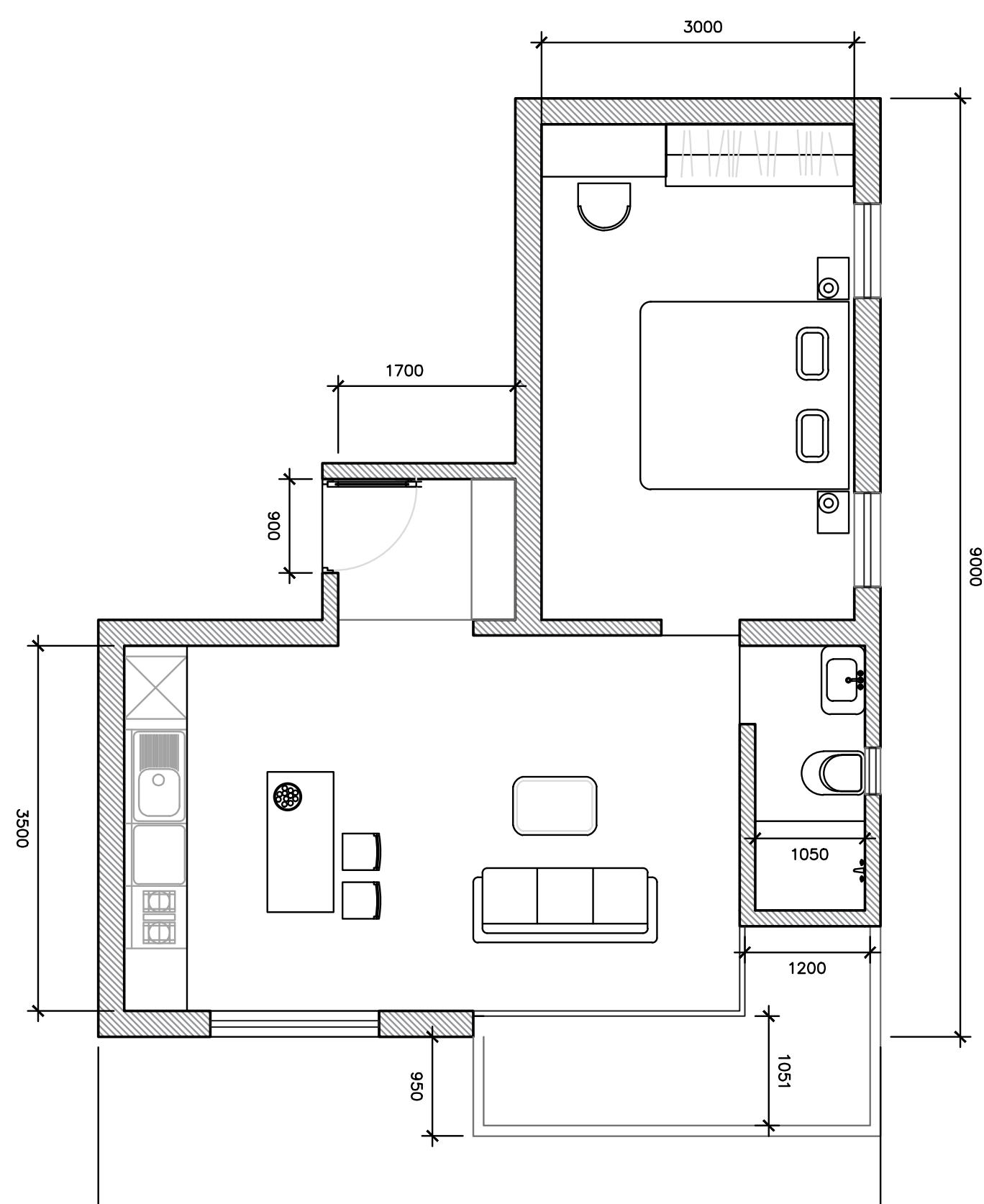
SITE PLAN WITH FIRST FLOOR



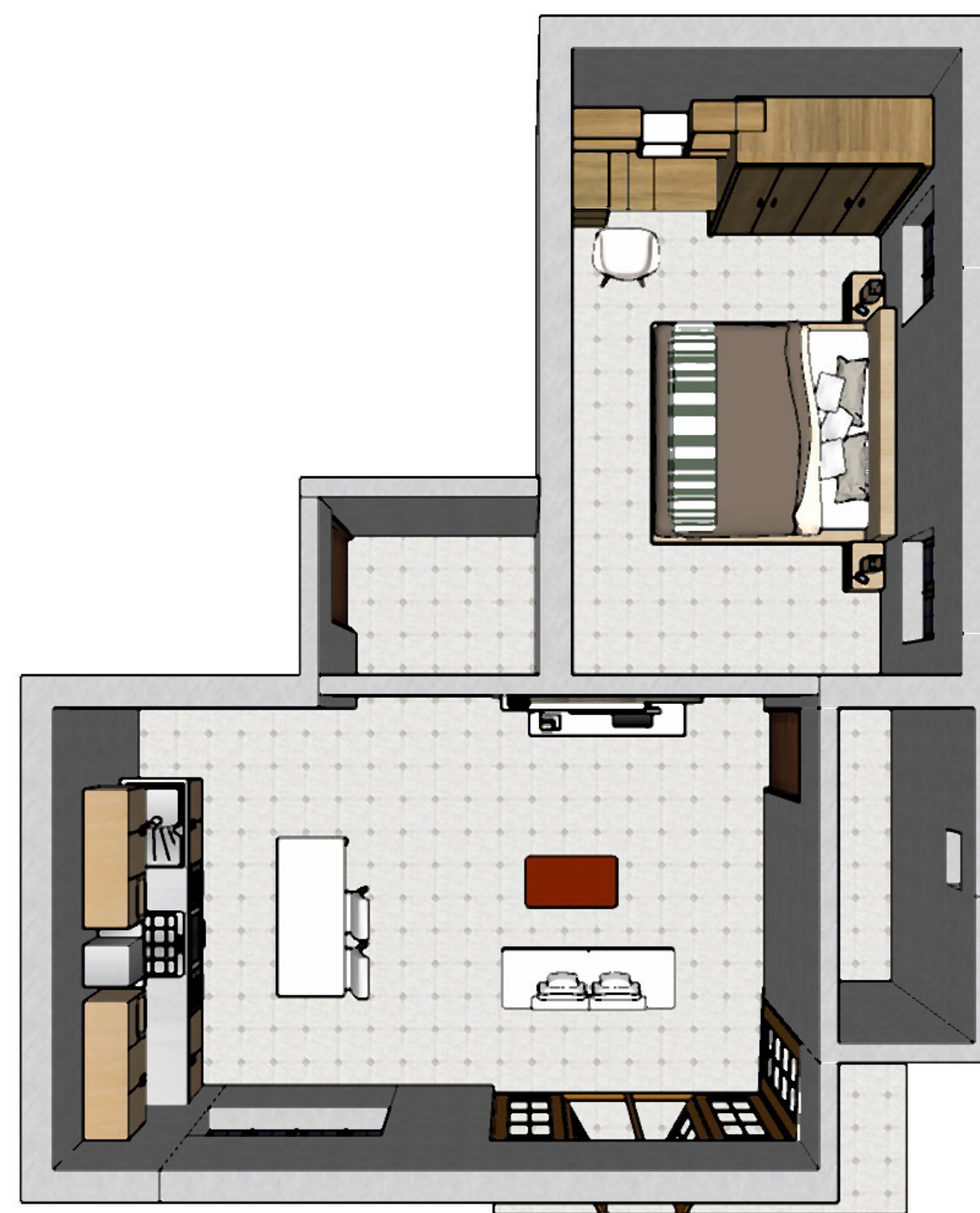
CLUSTER PLAN



UNIT RENDER



UNIT PLAN



MASS MODEL