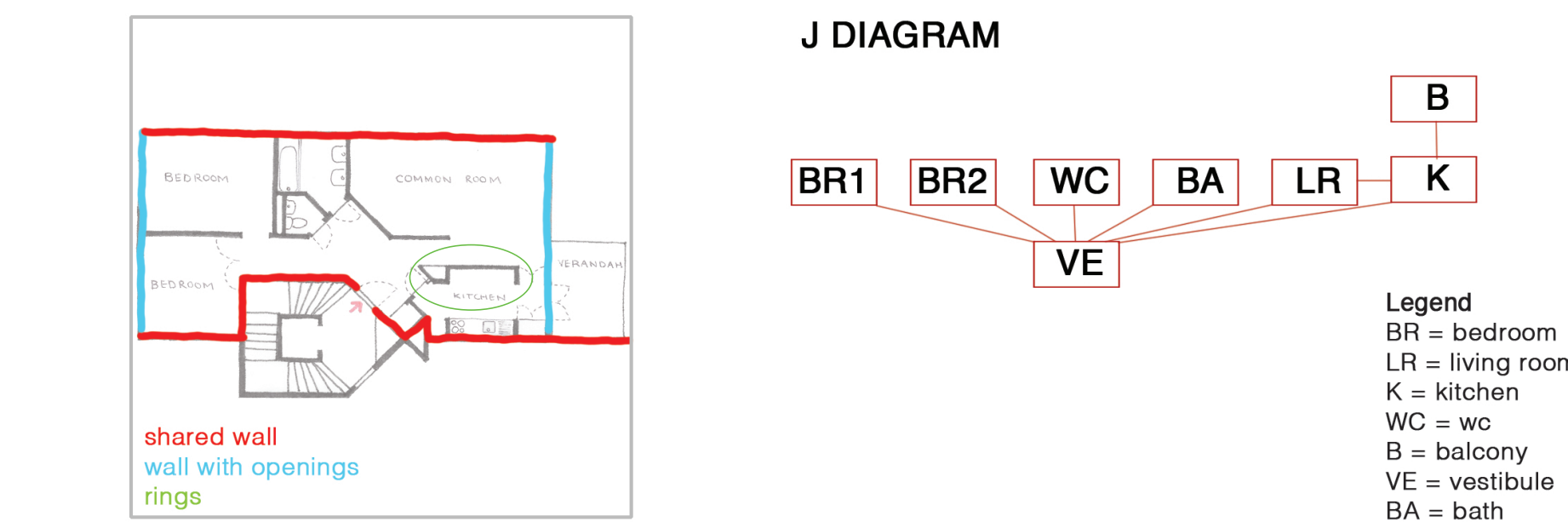
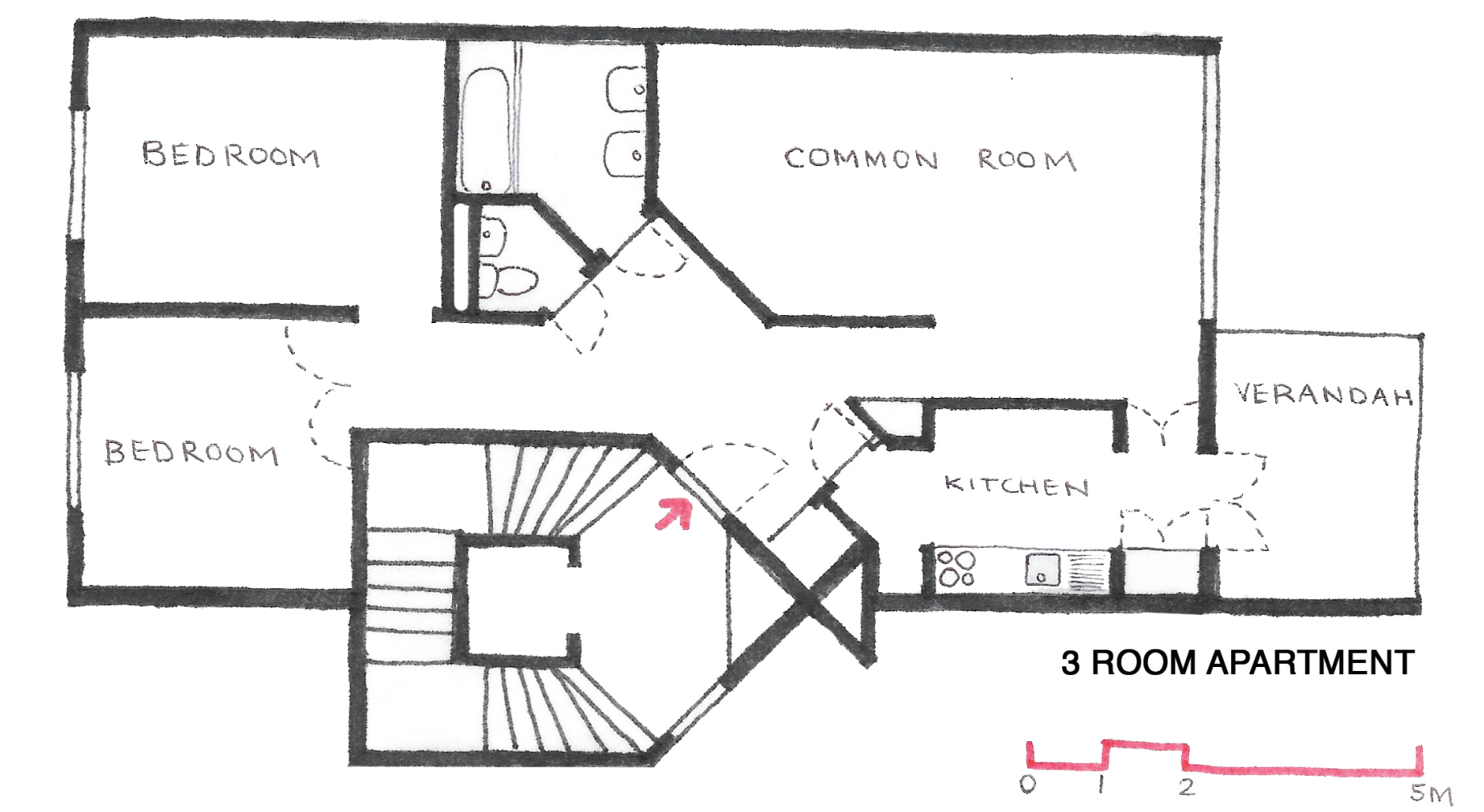
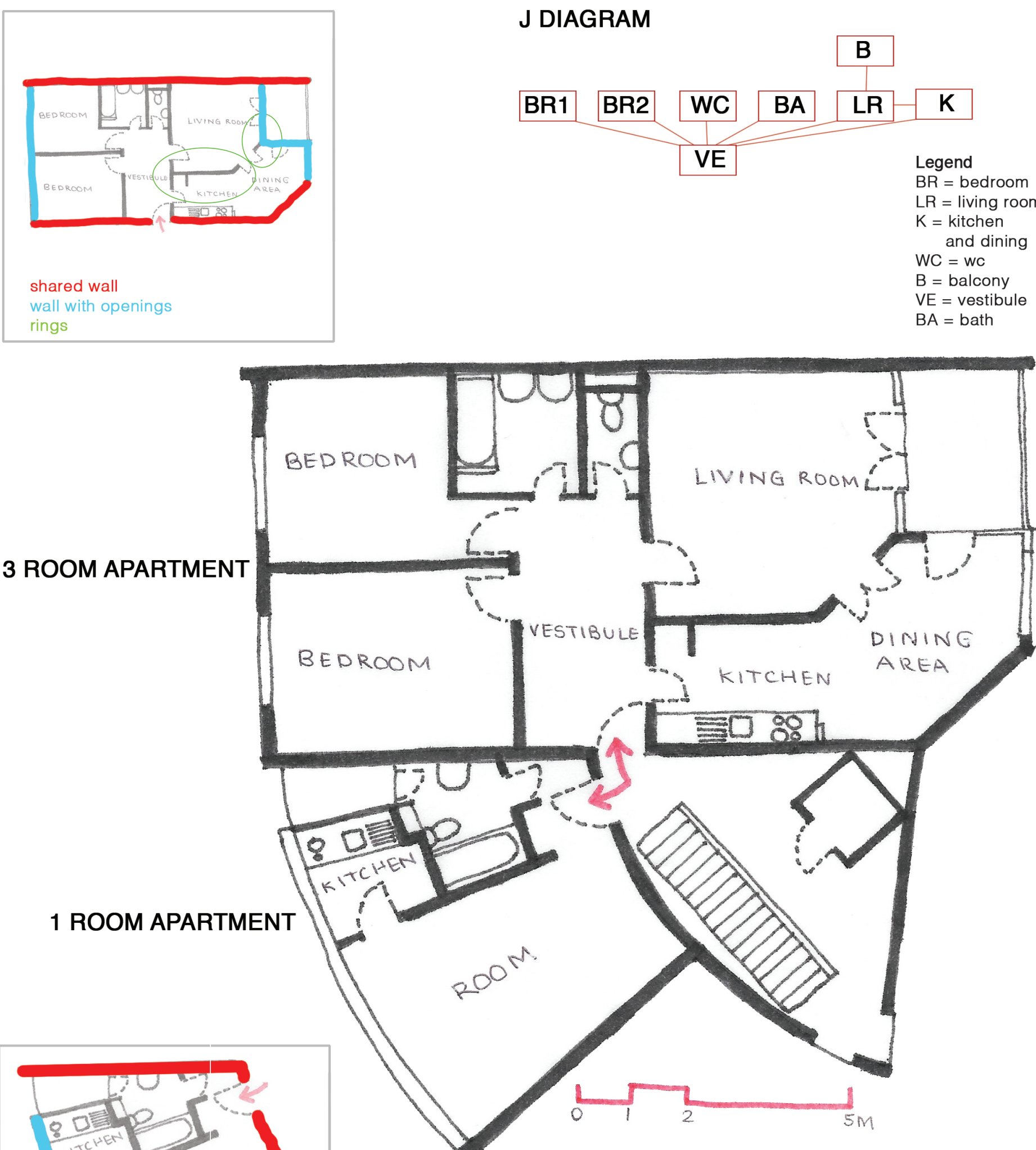


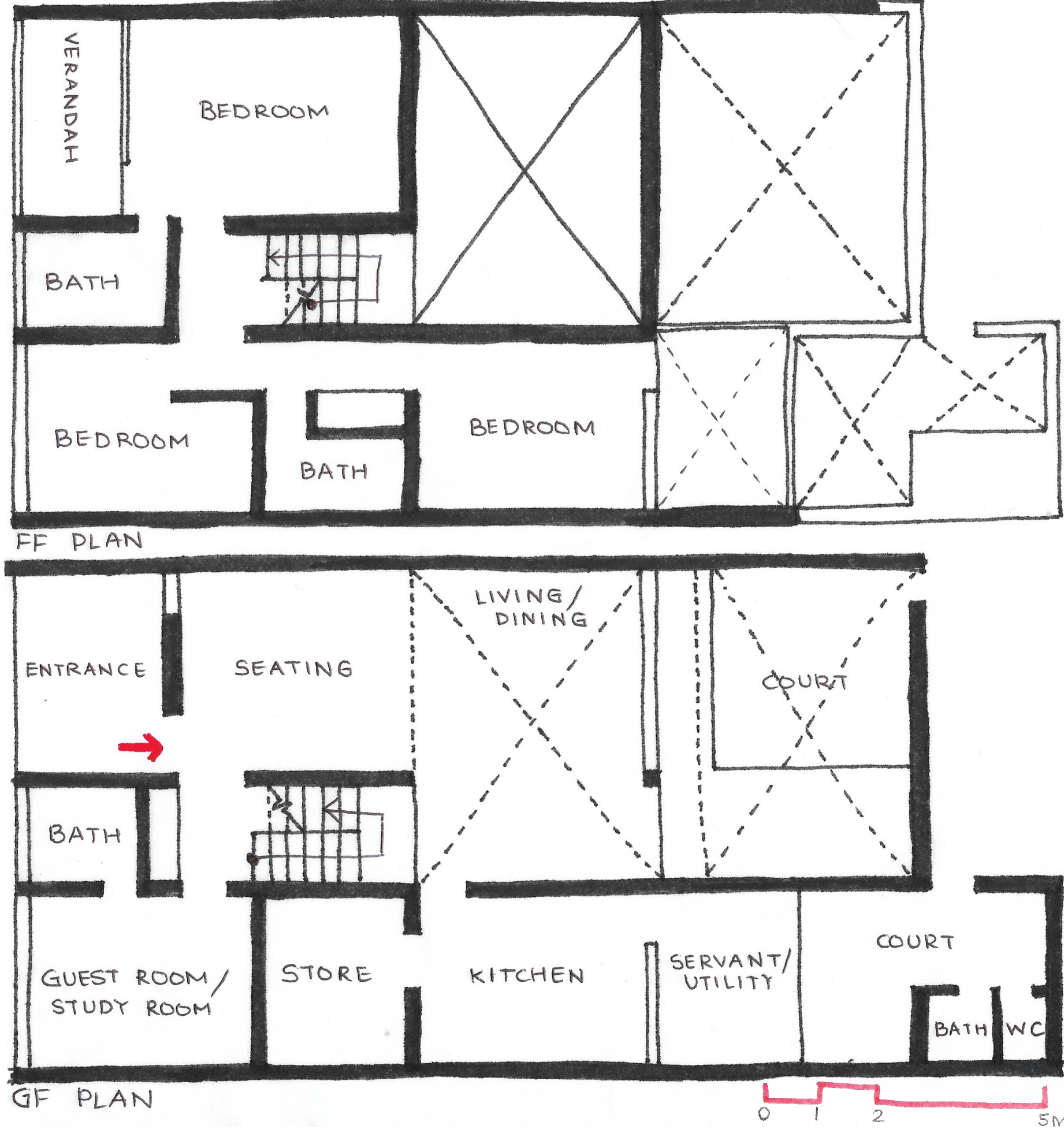
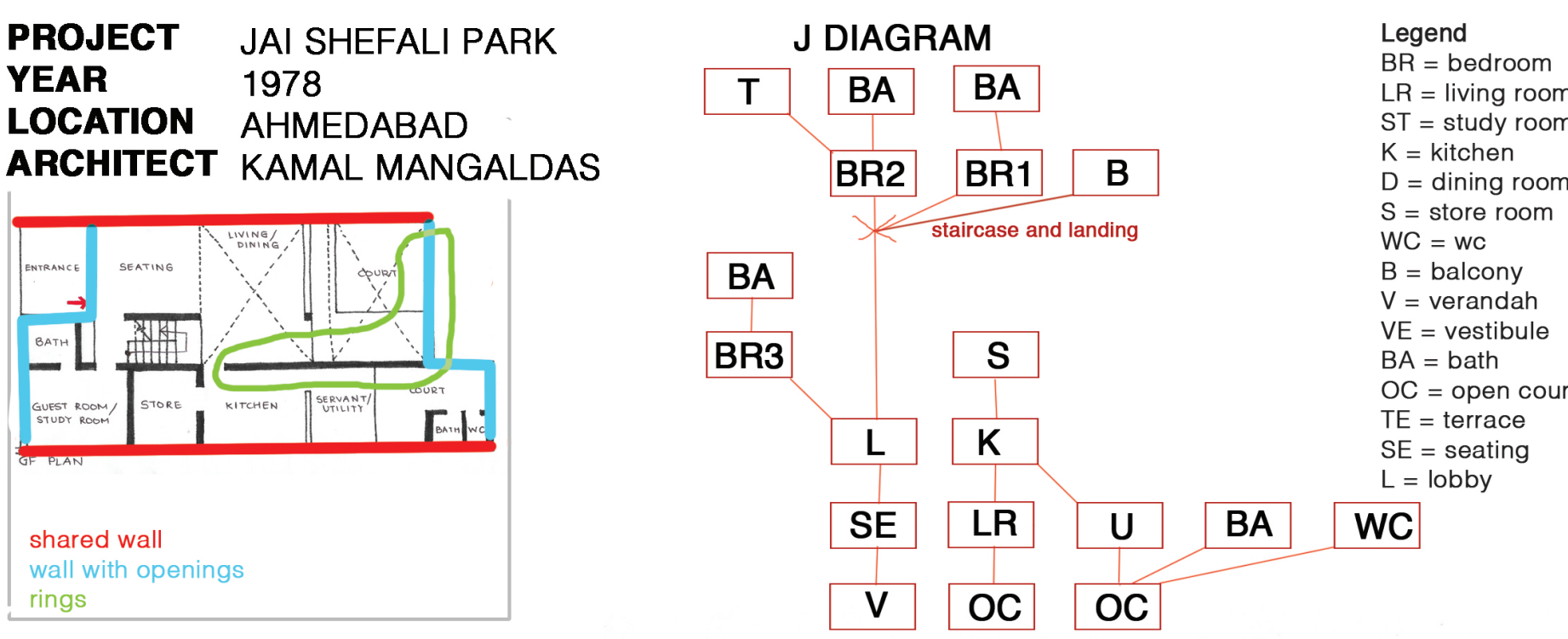
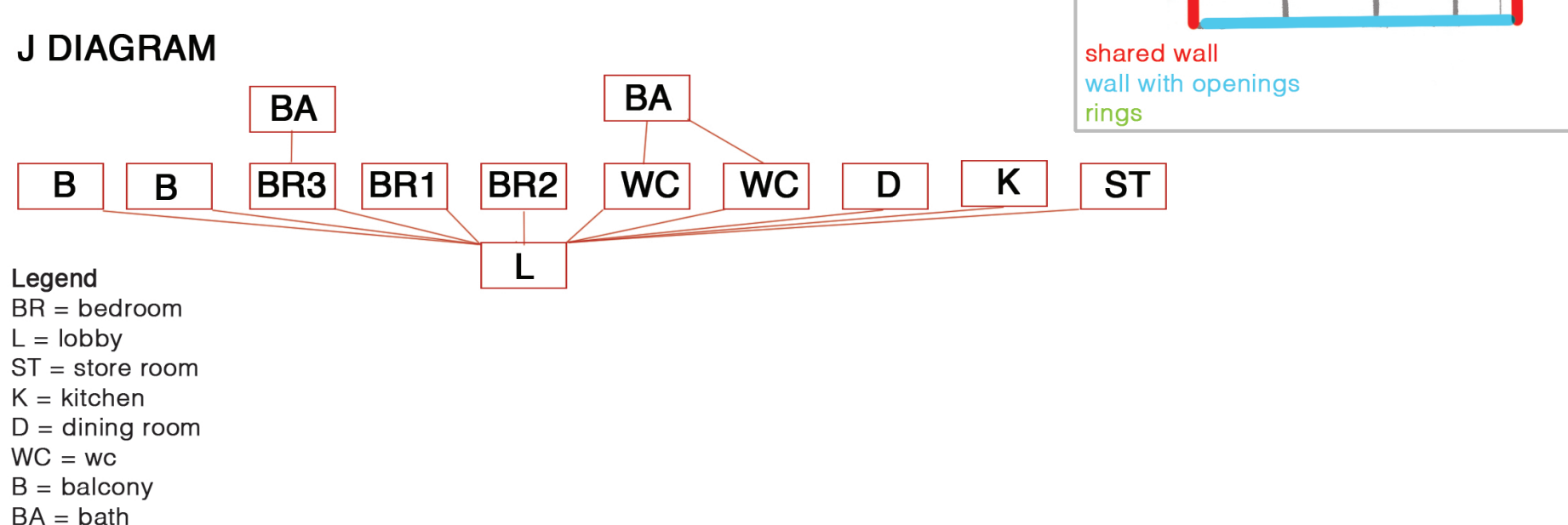
PROJECT BLASIRING
YEAR 1981
LOCATION BASEL, SWITZERLAND
ARCHITECT DIENER AND DIENER



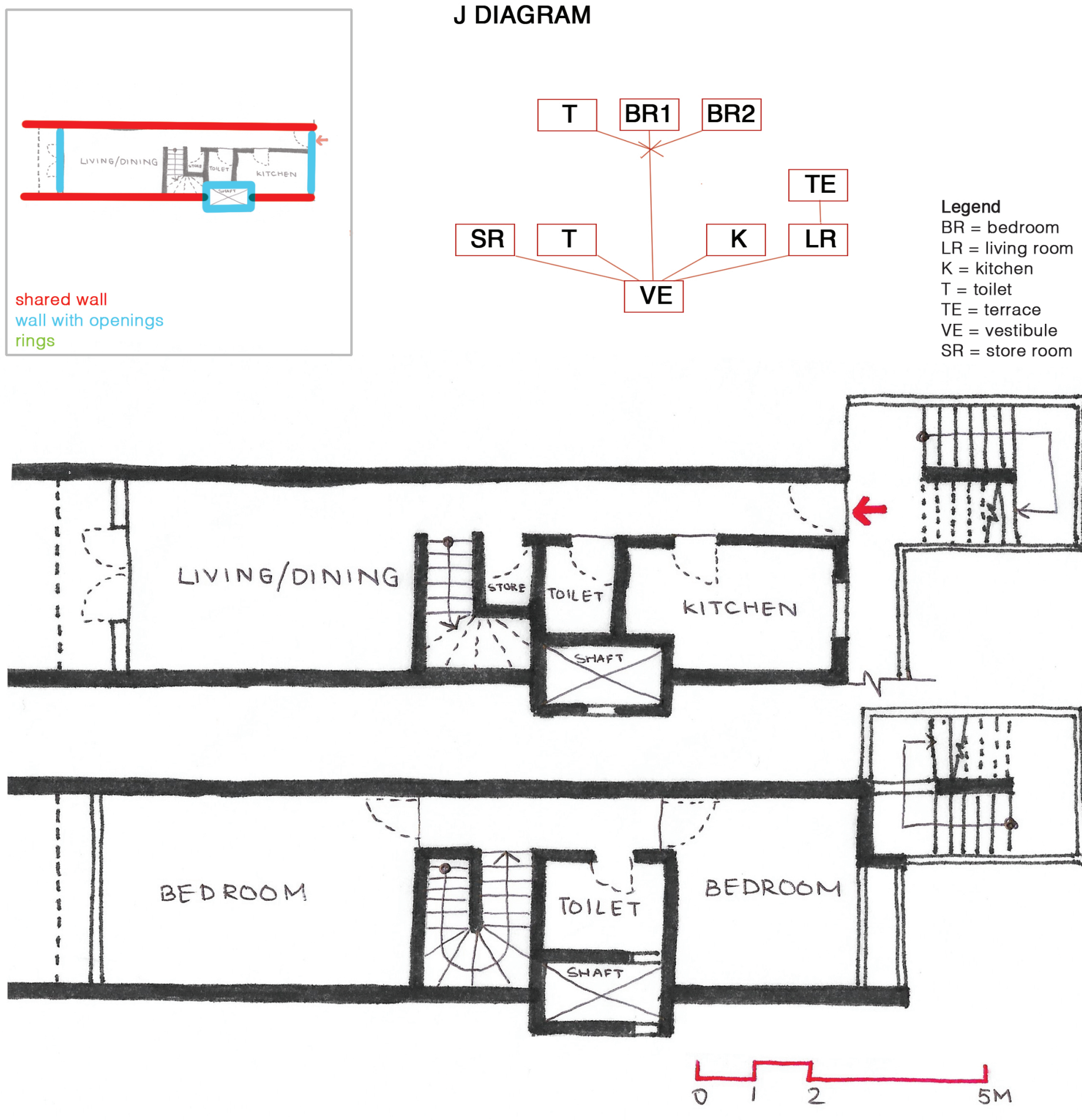
PROJECT BLASIRING
YEAR 1981
LOCATION BASEL, SWITZERLAND
ARCHITECT DIENER AND DIENER



PROJECT BLASIRING
YEAR 1981
LOCATION BASEL, SWITZERLAND
ARCHITECT DIENER AND DIENER



PROJECT TARA GROUP HOUSING
YEAR 1978
LOCATION NEW DELHI
ARCHITECT CHARLES CORREA



GHARONDA

'HOME' IS A COLLECTION OF MEMORIES THAT SHAPE US. THE PROJECT IS A RESPONSE TO BANAL AND LIFELESS CURRENT RESIDENTIAL BUILDINGS AND AIMS AT CREATING A HOLISTIC NOURISHING ENVIRONMENT KEEPING SOCIAL, PSYCHOLOGICAL AND VISUAL FACTORS IN MIND THAT IS A PLACE FOR CREATING THESE MEMORIES.

"WE SHAPE OUR BUILDINGS, THEREAFTER THEY SHAPE US"

We experience buildings through touch, sight and feel of the atmosphere and the sequence of spaces we go through everyday. Over time, these shape our experiences and make us aware and sensitive to the world outside.

Residential projects have a tremendous capability to shape us.

The project is a collage of various enriching experiences. These experiences are either taking care of social aspects, psychological aspects, visual and other sensual aspects.

At the level of unit, experiences can't be mirrored with mirroring plans. The project has two types of plan and organisations: one highlighting the bedroom space and one highlighting the living space, keeping experience in mind while mirroring. At the level of block and site, The project aims at providing variations in textures (touch and sight) to indicate boundaries crossed from inside to outside/ intimate to public spaces. Further level of variations come from various opportunities of taking paths, each offering a different experience. And at last various experiences by different modes (vehicular vs pedestrian).

