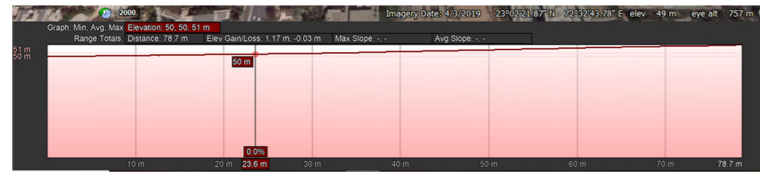
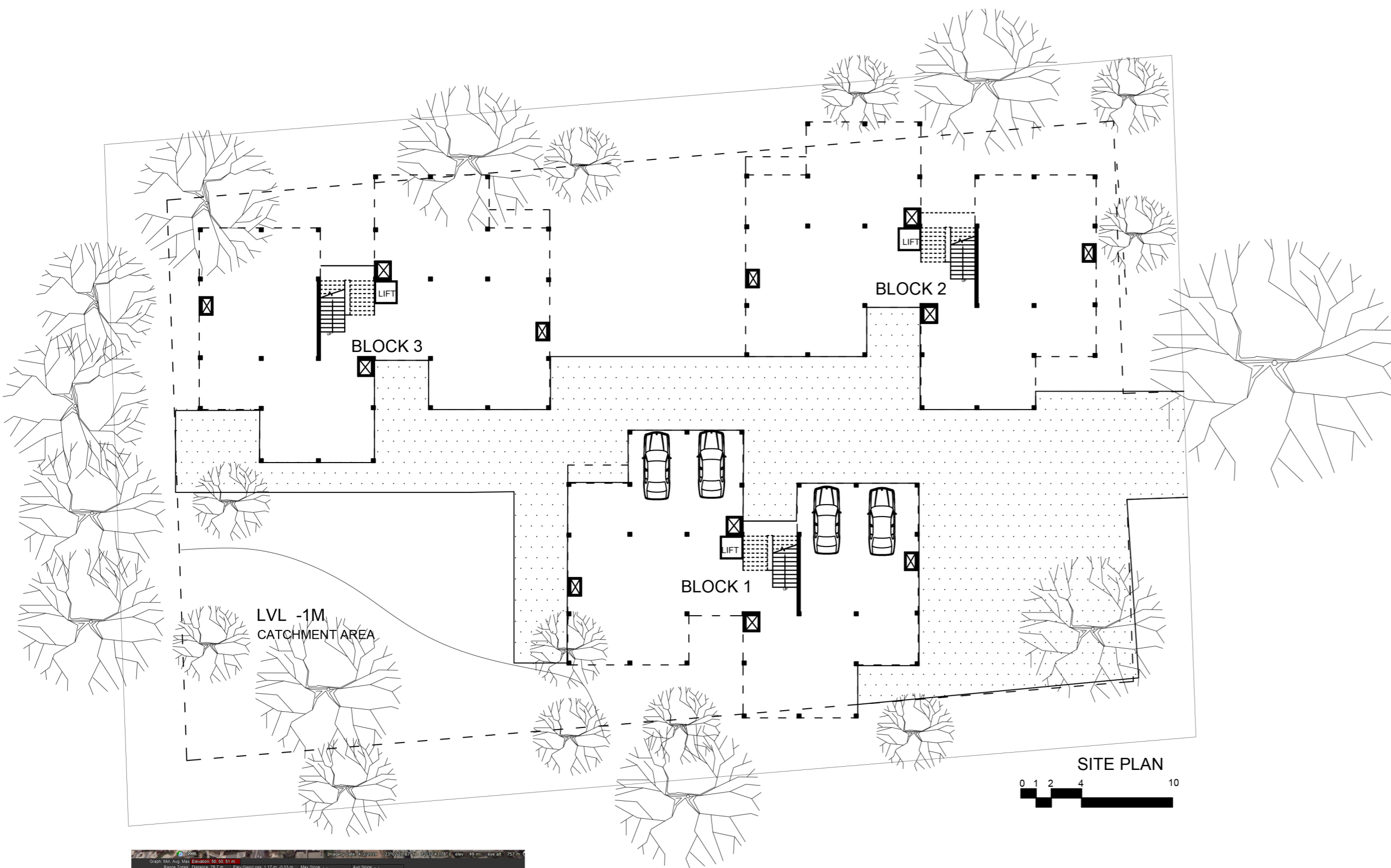


REDEVELOPMENT OF DADA SAHEB NA PAGLA

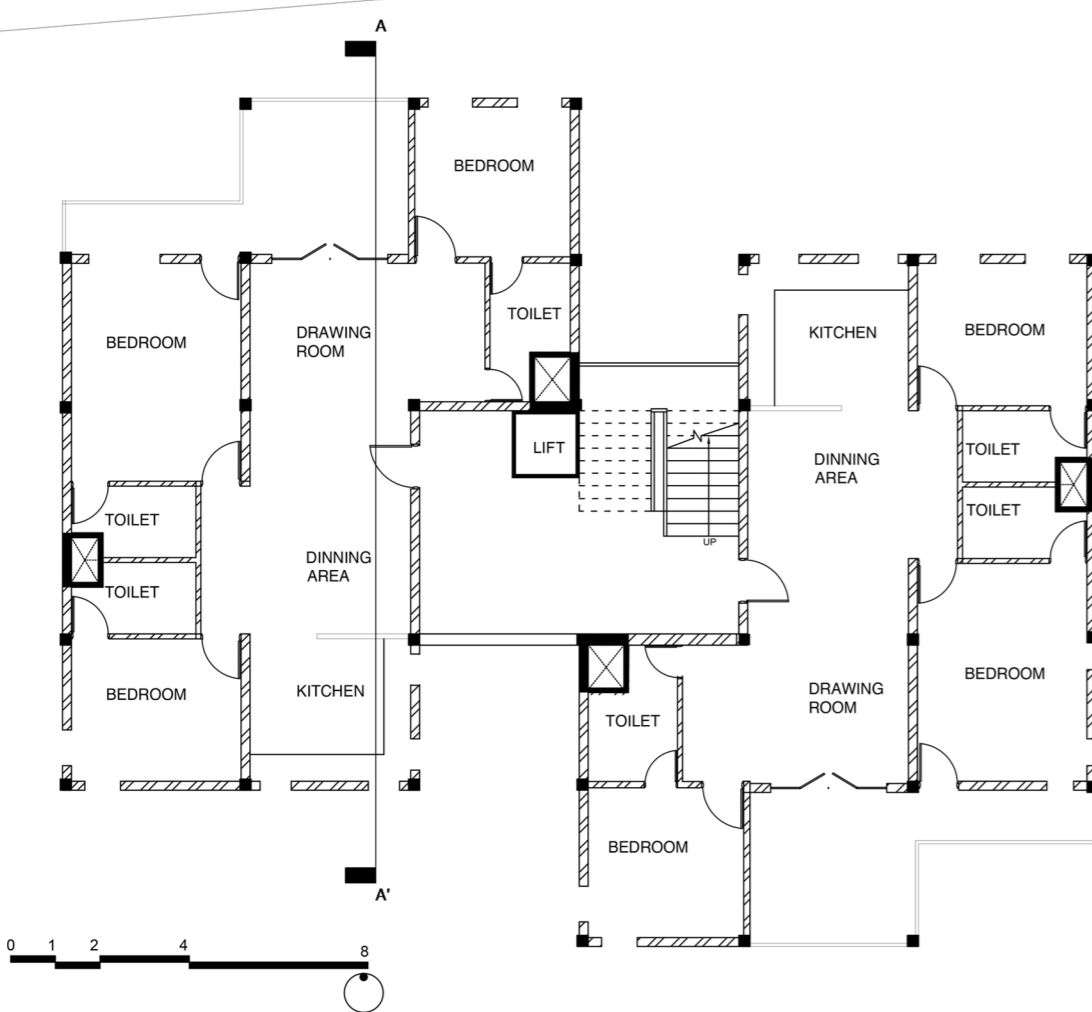
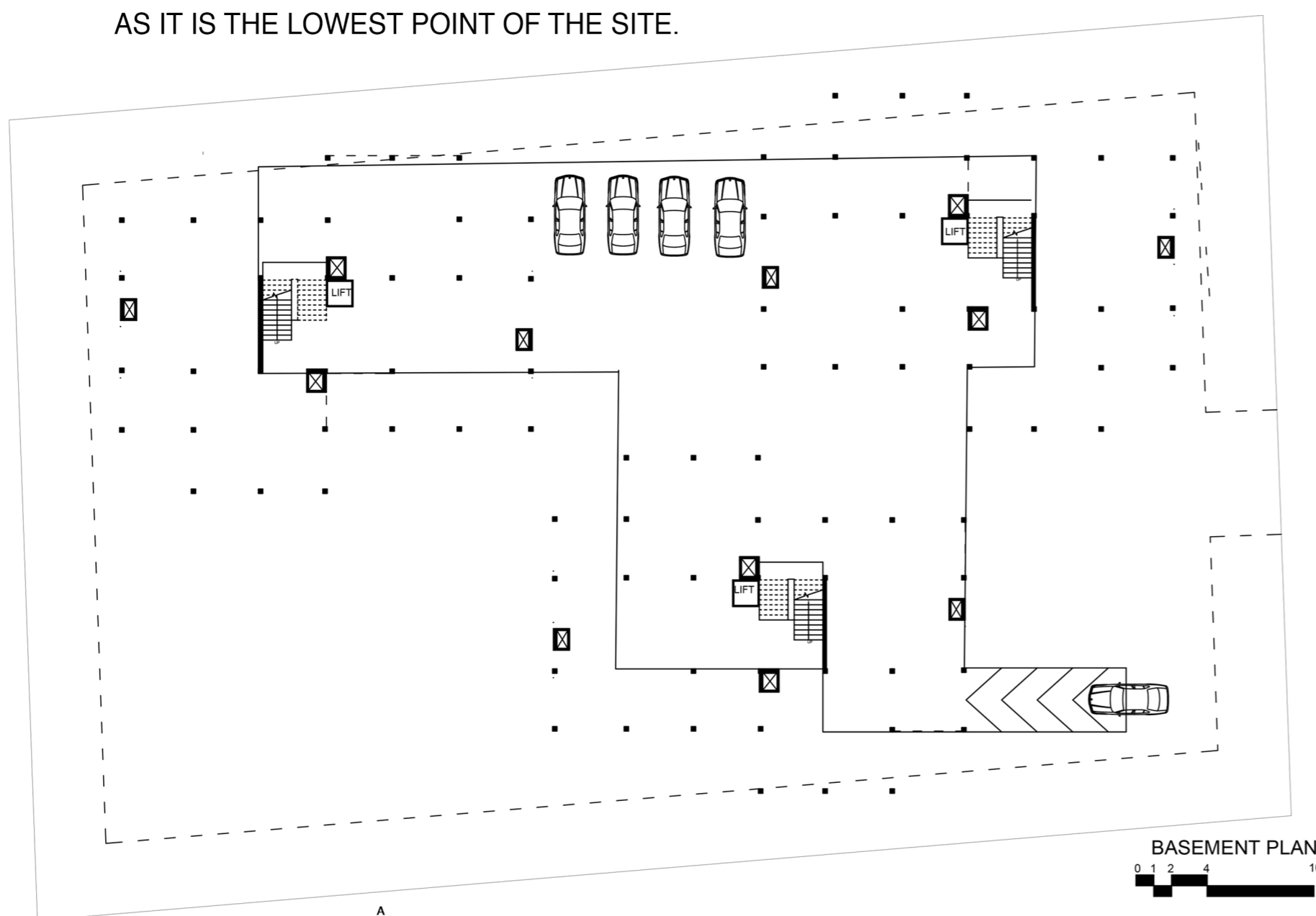
THE SITE IS SURROUNDED BY 3 MAIN INFLUENCES-
 UPCOMING METRO LINE, A JAIN DHERASAR, AND UNIVERSITIES.
 ALL THREE AFFECTING THE KIND OF PEOPLE THAT MIGHT BE INTERESTED IN OWNING/RENTING THE HOUSES IN THIS AREA.
 TARGET GROUPS ARE-
 FAMILIES
 STUDENTS/SINGLE OCCUPANCY
 PEOPLE ALREADY STAYING HERE (before redevelopment)

PROPOSAL

AS MENTIONED ABOVE THESE THREE GROUPS ARE CONSIDERED AS THE TARGET GROUP.
 WE CAN START BY CONSIDERING THE DIFFERENCE BETWEEN THEM AND CREATING A LAYOUT THAT FITS ALL THREE THROUGH MINUTE CHANGES,
 WHICH LEADS TO MORE OPTIONS IN ONE BLOCK - 1bhk, 2bhk, 3bhk.
 ACHIEVED BY A VERY MINUTE CHANGES.



THE LEFT CORNER OF THE SITE IS LEFT UNTOUCHED SO AS TO COLLECT THE WATER THAT GETS DISPLACED DUE TO THE SOLID GROUND AS IT IS THE LOWEST POINT OF THE SITE.



PICTURES OF THE SITE, CURRENTLY THERE ARE 4 BLOCKS & 42 HOUSES IN TOTAL

CURRENTLY THERE ARE 4 BLOCKS PRESENT, AND 42 HOUSES IN TOTAL, THE SCHEME SUGGESTS 72 HOUSES - IN 3 BLOCKS

- 1 BLOCK - 24 HOUSES - 3BHK - 8 (8m * 12m + 7.5m * 7m) 148.5 sq. m
- 2BHK - 8 (8m * 12m) 96 sq. m
- 1BHK - 8 (7.5m * 7m) 52.5 sq. m

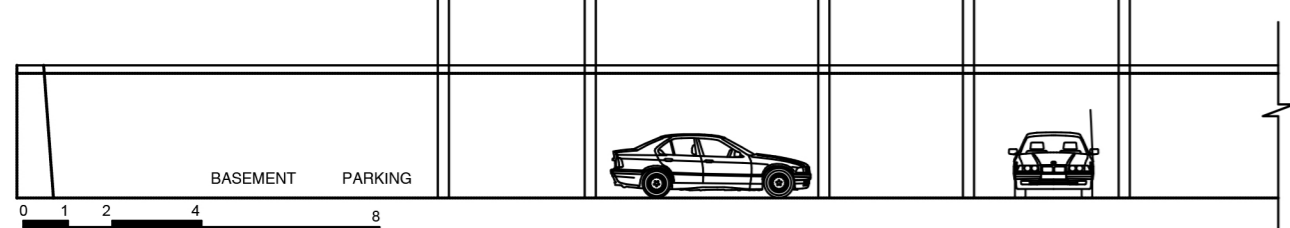
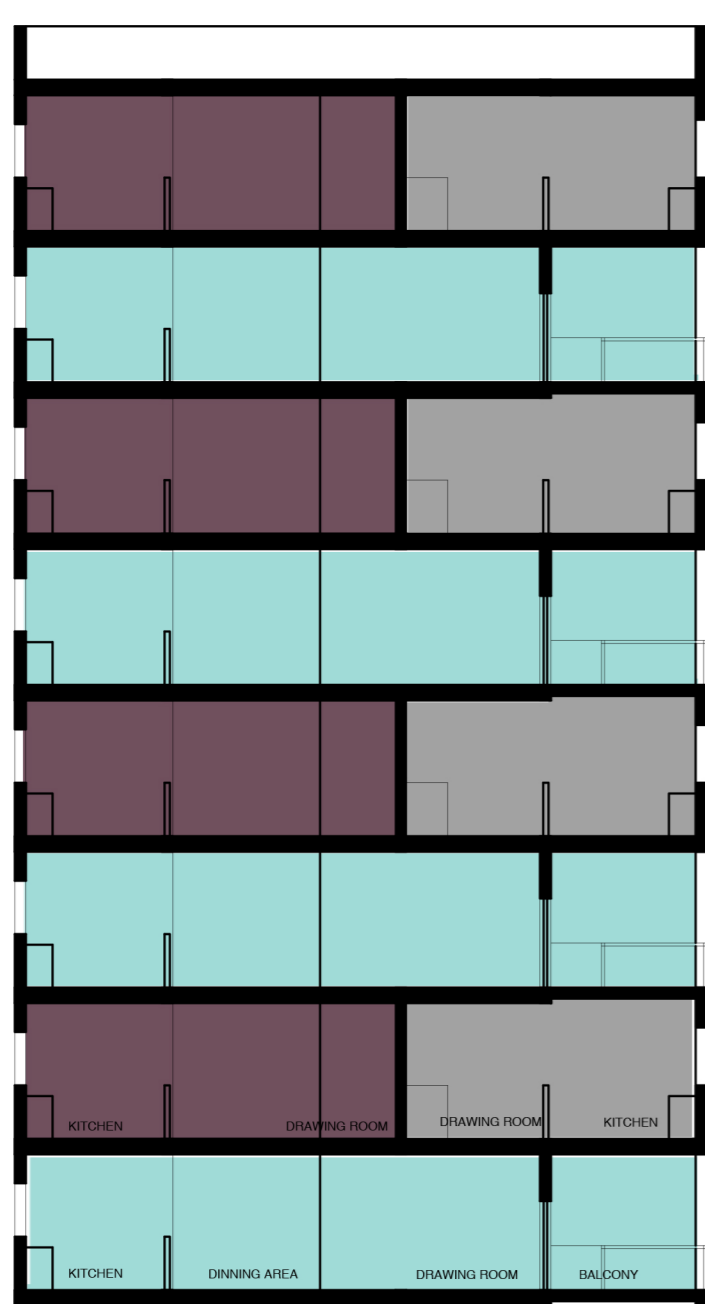


1bhk - SECOND, FOURTH, SIXTH, EIGHTH FLOOR

2bhk - SECOND, FOURTH, SIXTH, EIGHTH FLOOR



3bhk - FIRST, THIRD, FIFTH, SEVENTH FLOOR



- 3bhk - FIRST, THIRD, FIFTH, SEVENTH FLOOR
- 1bhk - SECOND, FOURTH, SIXTH, EIGHTH FLOOR
- 2bhk - SECOND, FOURTH, SIXTH, EIGHTH FLOOR

STUDIO- OIKOPOLIS: attack of th clones
 FACULTY- Vishwanath kashikar

Anindya Raina UA0215