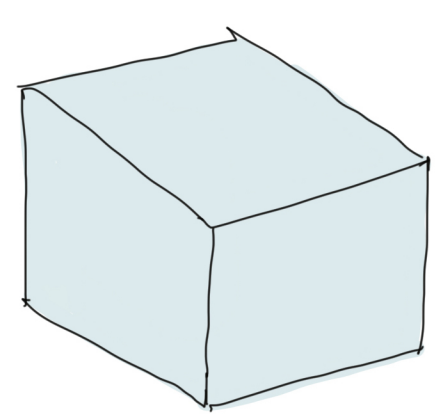


TIME PROBLEM:1
REDEVELOPMENT OF DADA SAHEB NA PAGLA SOCIETY

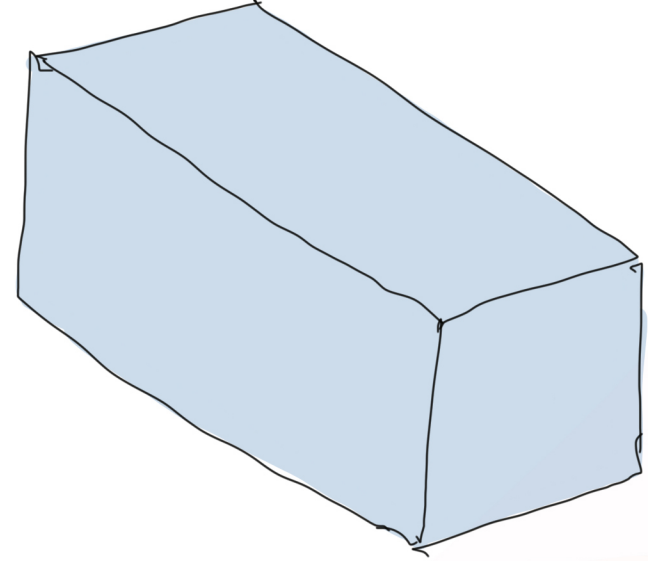
SITE AREA: 3150 SQ M.

PROVIDED NO OF UNITS: 104 (72 STUDIO APARTMENTS + 32 1BHK)
Three towers of ground plus 8 floors.
Open ground floor acts as parking.
Open to sky areas become community gathering spaces.

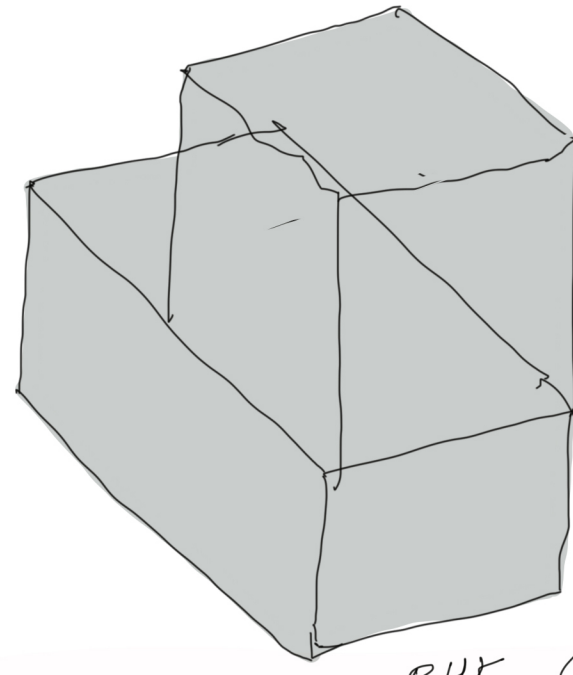
- Housing for Bachelors / Students / single working professionals or small families.
- Designed using a base module of 45 sq m. (studio)
- Every alternate floor is 1 bhks and studios.
- This offers a possibility of interlocking the modules vertically.
- When a family grows or wants to add an extra room, they can either buy or rent a studio exactly above or below it and add staircase to access the extra room.
- This system allows the owners to purchase extra studio (disconnected from their own house) and rent it out to students.



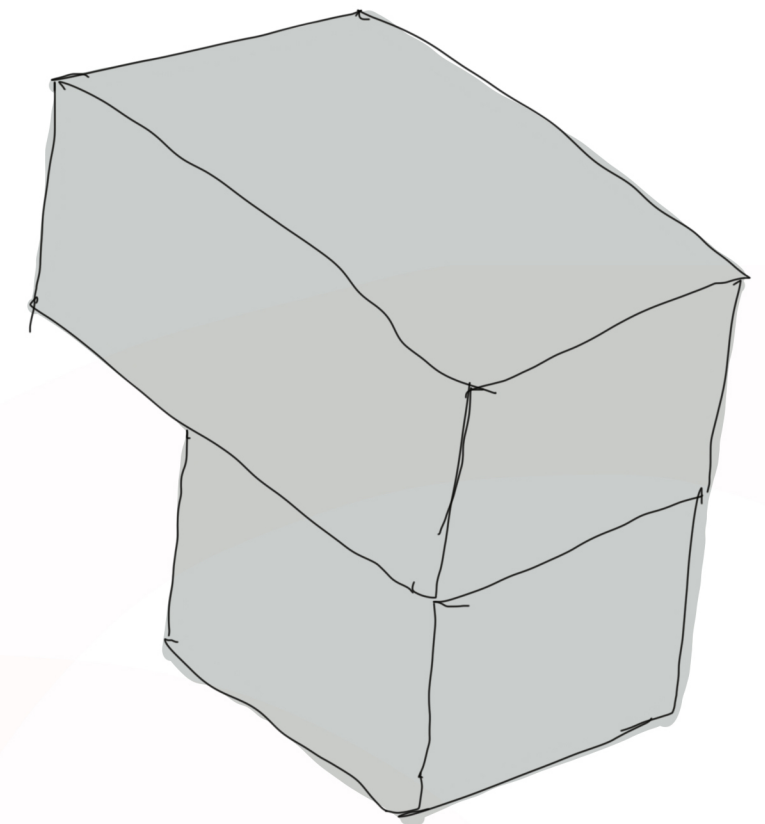
STUDIO APARTMENT
-45 m²
(PROVIDED OPTION)



1 BHK
90 m²
(PROVIDED OPTION)



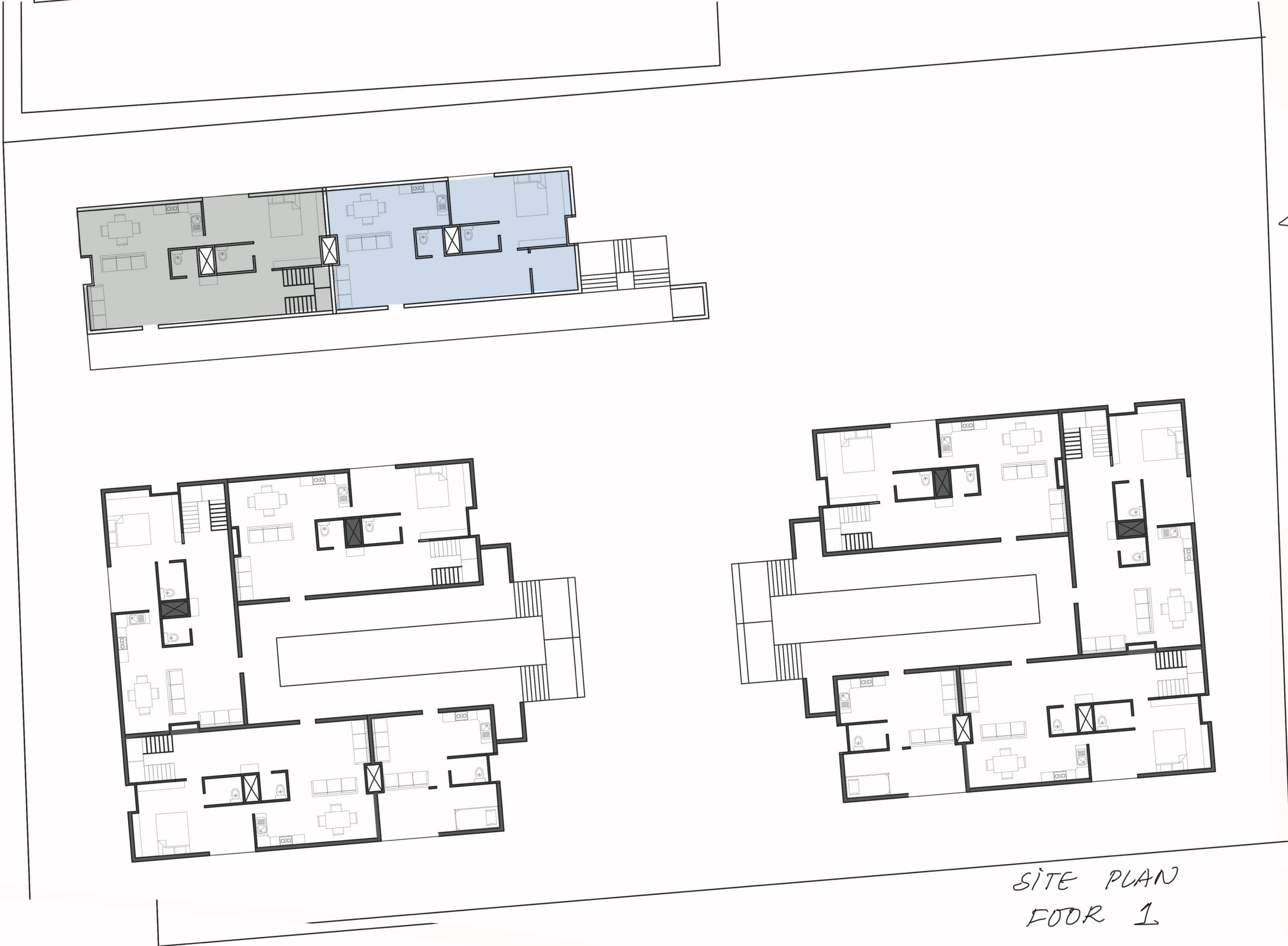
2 BHK (1)
135 m² (POSSIBILITY)



2 BHK (2)
135 m² (POSSIBILITY)



SITE PLAN FLOOR -2



SITE PLAN FLOOR 1

ENTRANCE TO SITE

UNIT PLANS
1:100 SCALE



STUDIO APARTMENT PLAN



1 BHK PLAN

ENTRANCE TO SITE.



2 BHK DUPLEX (ABOVE)



2 BHK DUPLEX PLAN (BELOW)