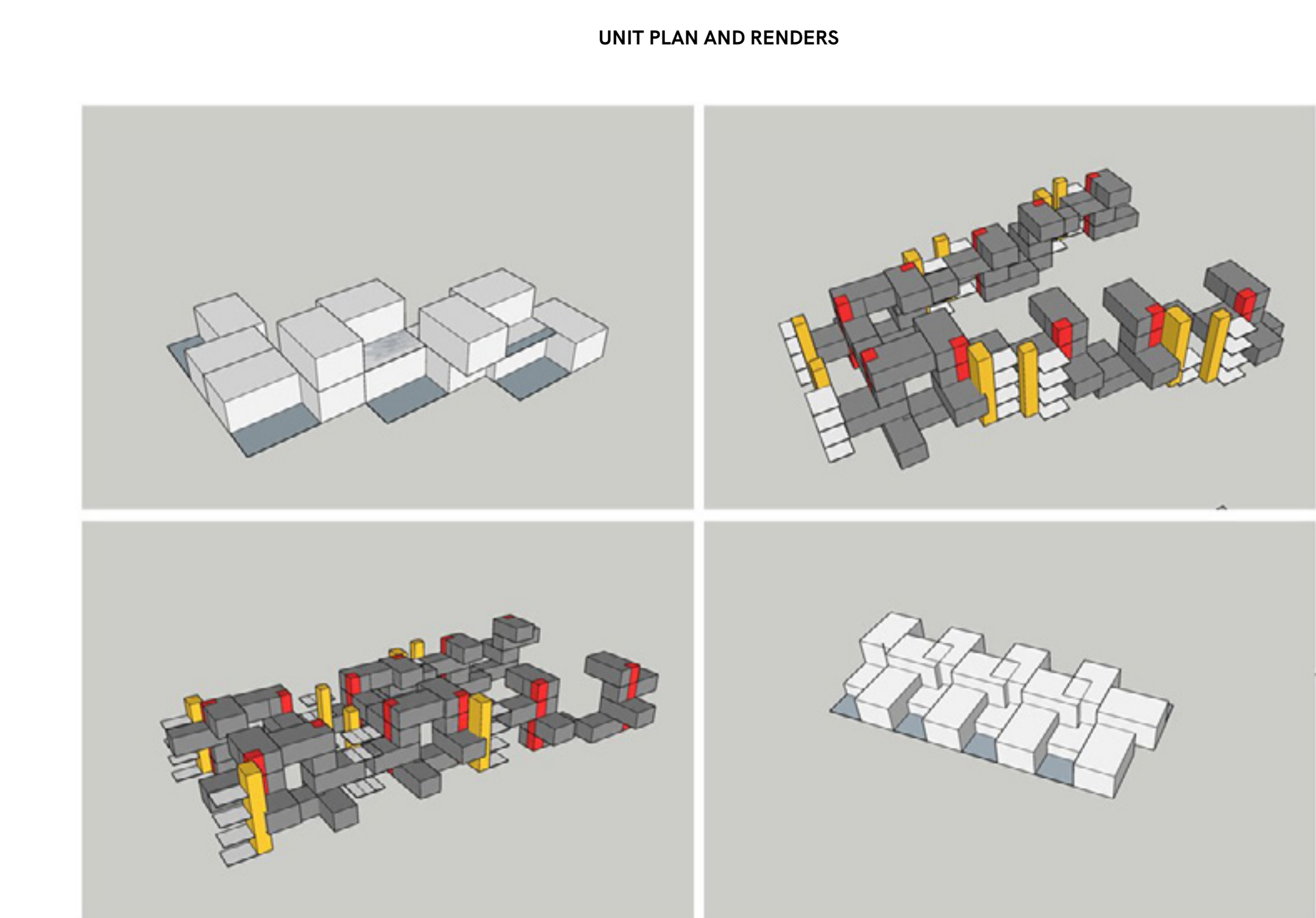
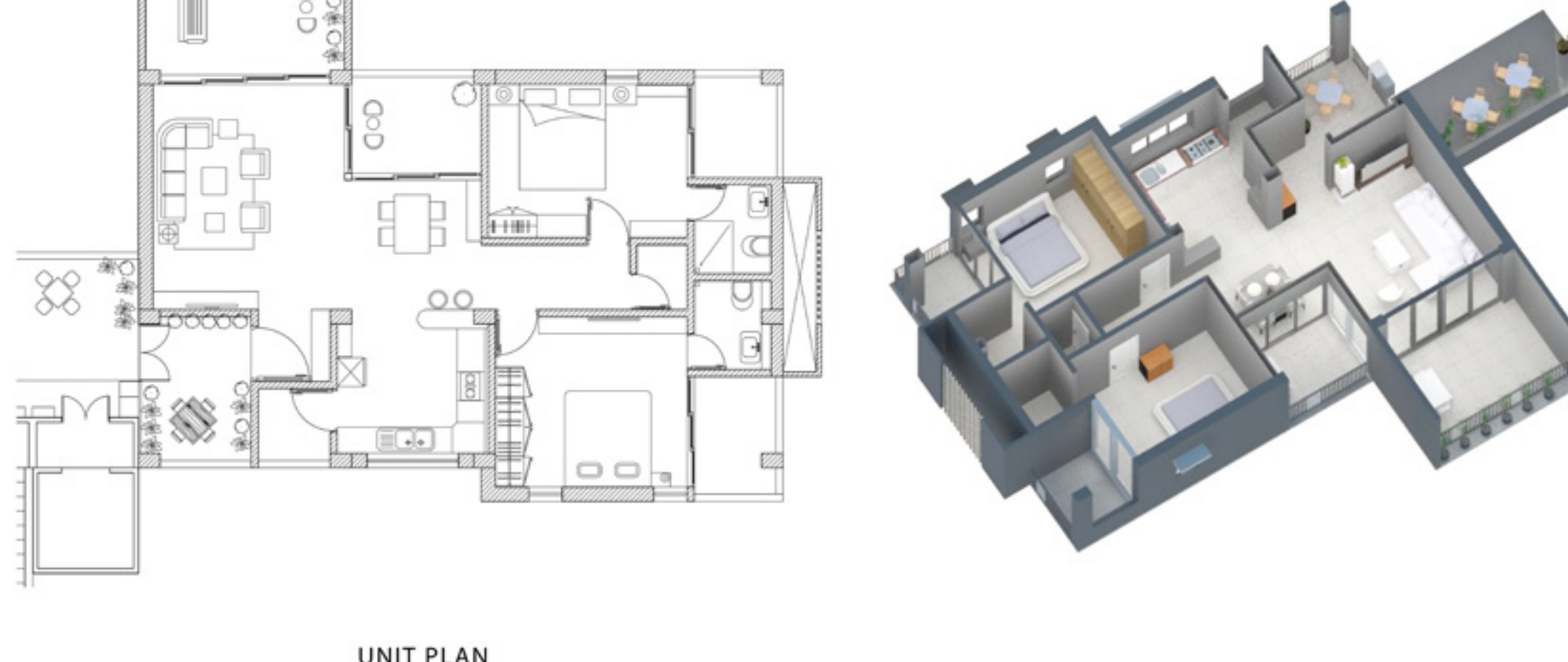
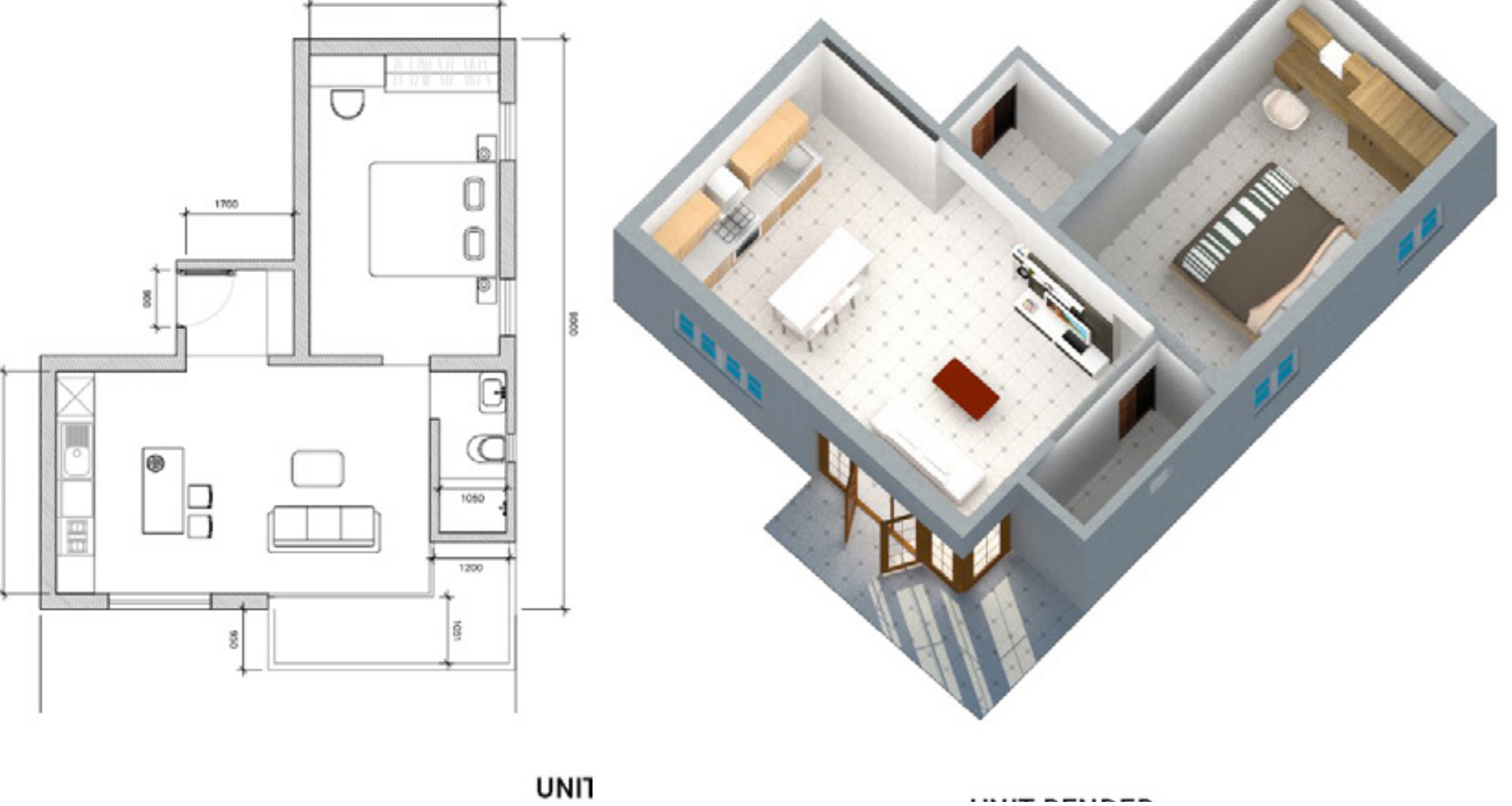
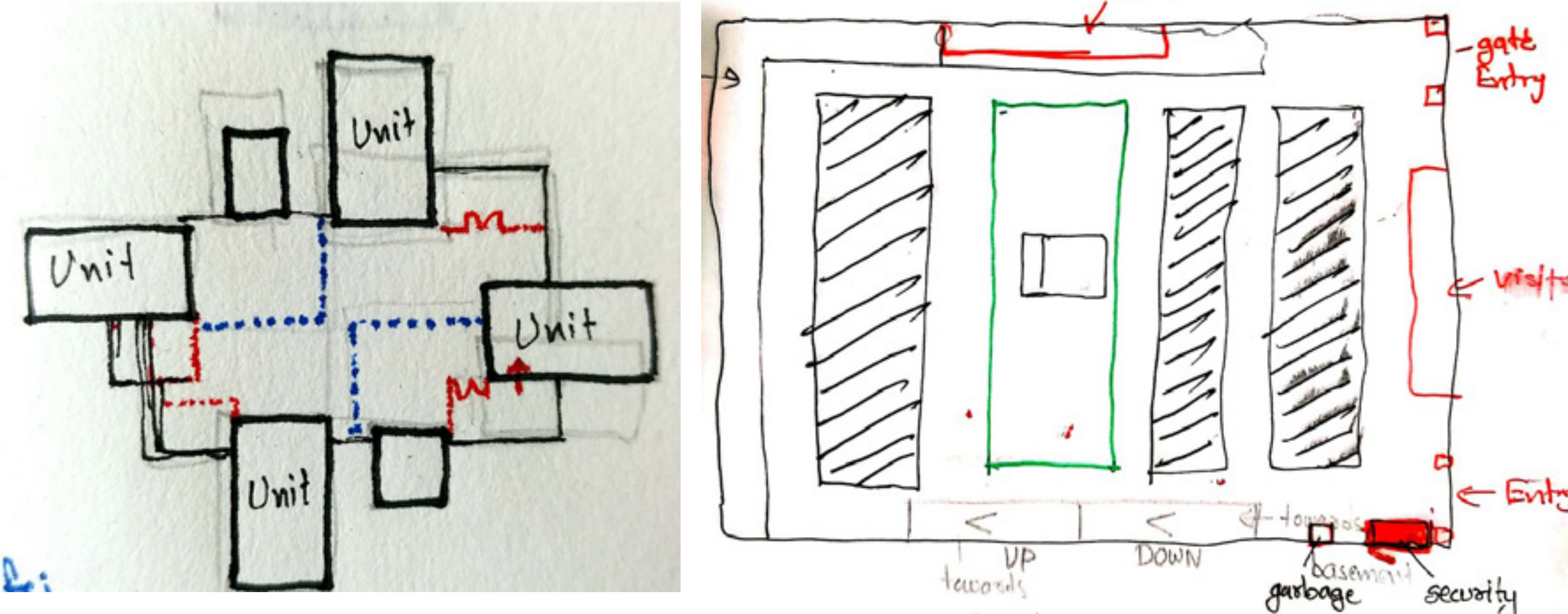


TIME PROBLEM PREPARATIONS:



UNIT PLAN AND RENDERS

MASSING

Problems in current housing ;

Properties of the spaces in the bungalows which are not there in the current apartments.

1. Interaction between two different units using the side margins
2. Sense of arrival one has.
3. Having an own space in the house and connected with the outside.
4. Utility areas are spreaded across the whole bungalow;
1. The chokdi is near to kitchen and it required shade and it is wet area.
2. Storage space in the backyard or in the utility zone which needs protection from saun , rain.
3. Place for the drying the clothes, which required the dry and clean space.
4. washing machine space, which is require the protection from the sun and rain.

My design tries to bring these properties in an apartment unit.

I started by identifying the 3 main spaces and stated designing these space individually.

1. Otlo
2. Heart of the home
3. Utility area

2.Heart of the home

The place where we have our most of the memories,multifunctional space where many thing happen at the same time and it has possibility to have multiple type of the activites. aslo greater value which one space have and its surrounded space make it more ac-tive.

1. Get together
2. Dining
3. Family functions
4. Small gatherings
5. Playinging
6. Chilling partying sleeping outside

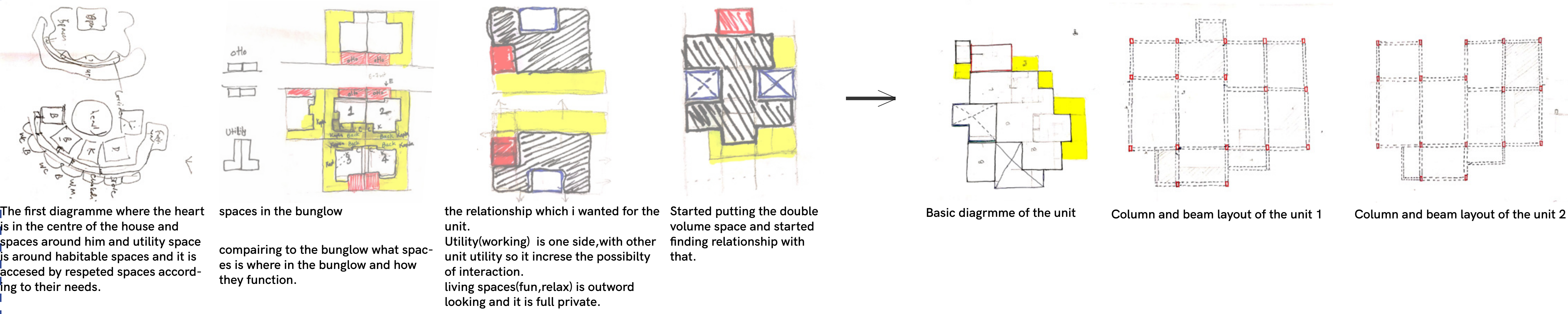
2.Utility area

Most of the time someone whos is working spend in the utility area,it has the biggest opportunity to interact with the others. also our memory stored at the storage or somewhere in utility bcz we dont want to throw the things which we were attached to it.

Current housing is not treating well to the utility area,not providing the inuf space to the utility area which it required ,less storage , less space for the washing machine, everyting dumped at one place.

But every Utility space require different atmosphere and different space for the respected activity.such as wet space, dry space,protection from rain ,protection from rain and sun, shaded, closed, semi open space, allowed wind.

After identifying and designing the individual spaces strated finding the relationship between these three(otlo, heart,utility area) spaces where they function in harmony.

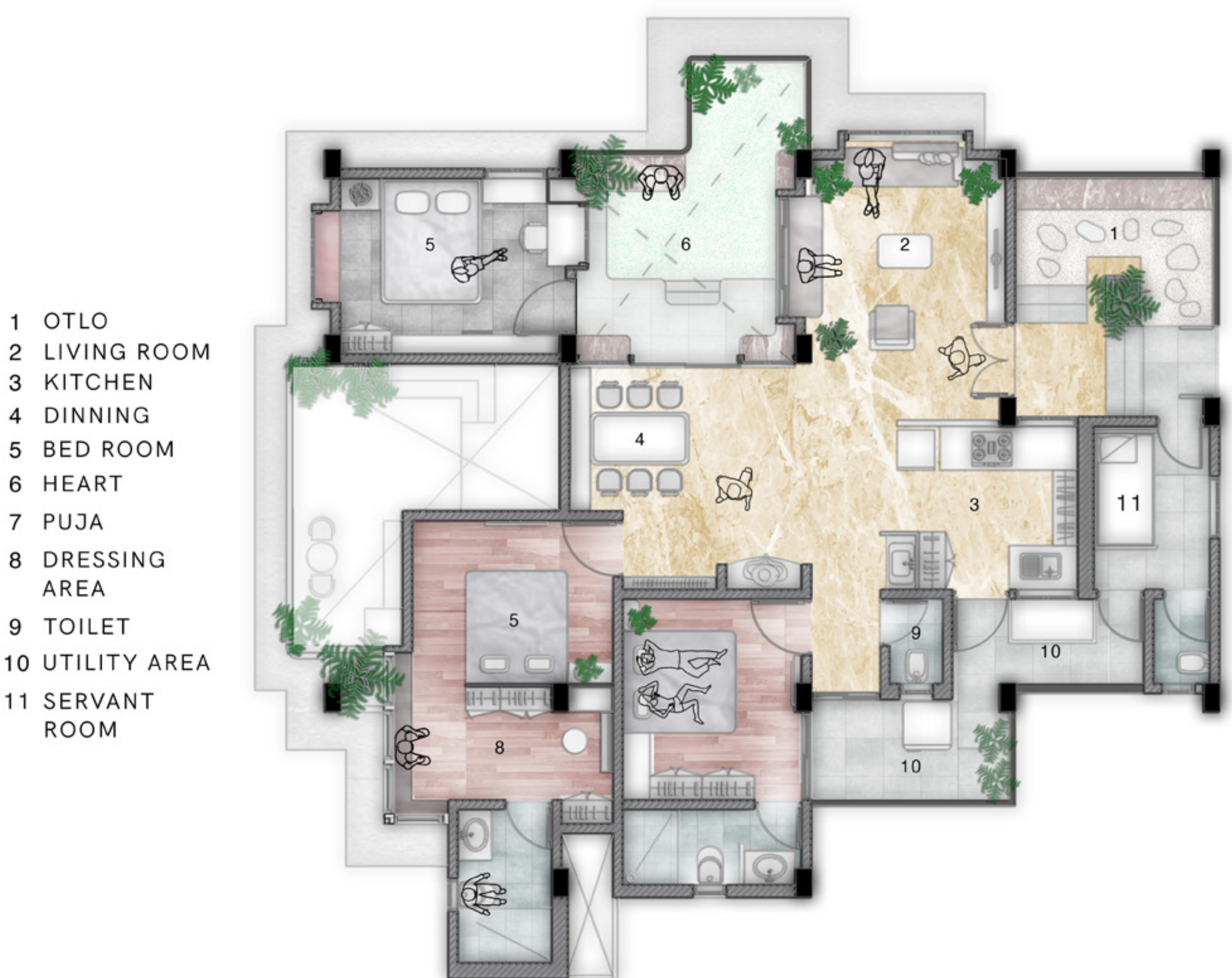


The first diagramme where the heart is in the centre of the house and spaces around him and utility space is around habitable spaces and it is accessed by respected spaces according to their needs.

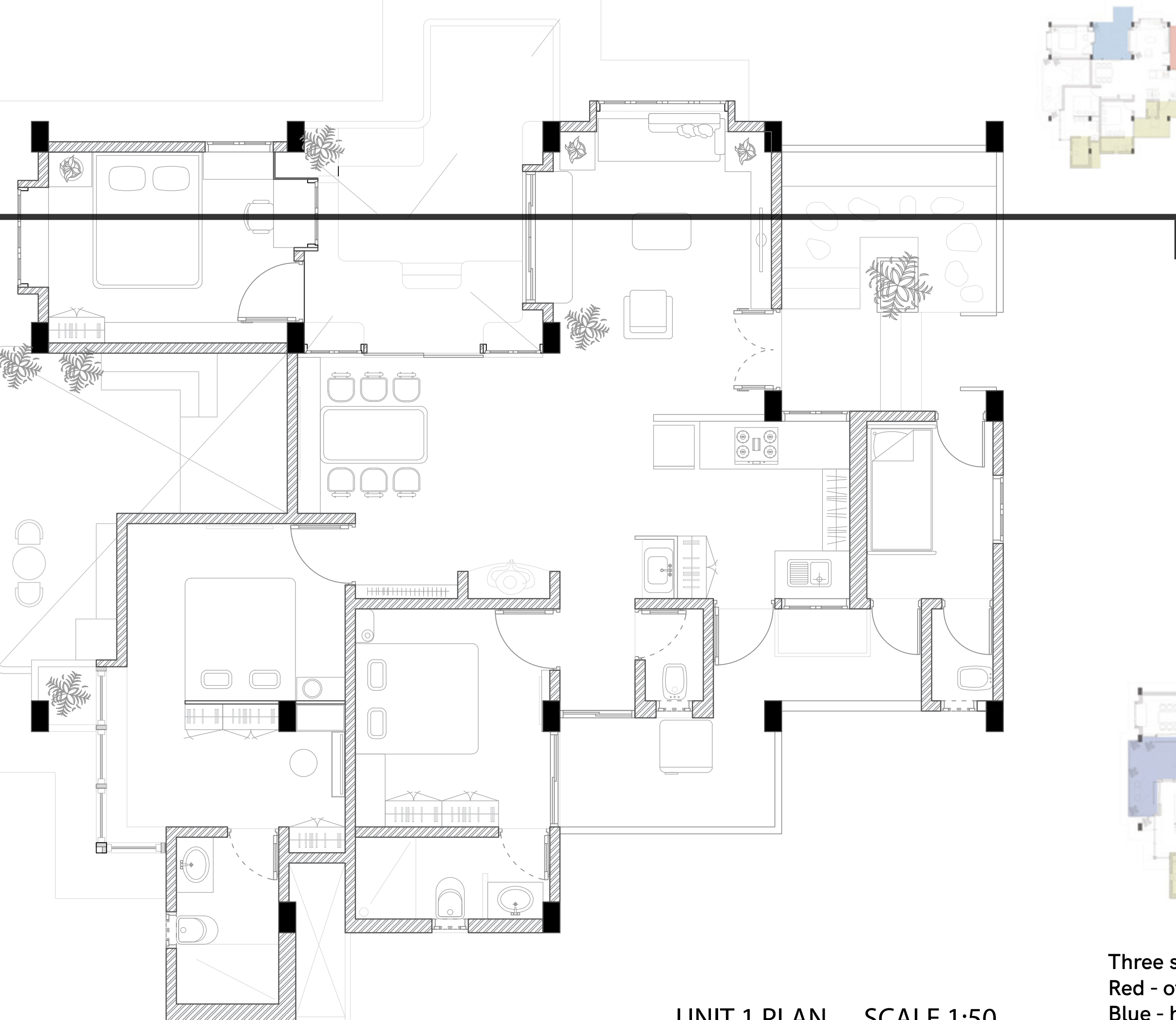
spaces in the bungalow comparing to the bungalow what spaces is where in the bungalow and how they function.

the relationship which i wanted for the unit. Utility(working) is one side,with other unit utility so it increse the possibility of interaction. living spaces(fun,relax) is outword looking and it is full private.

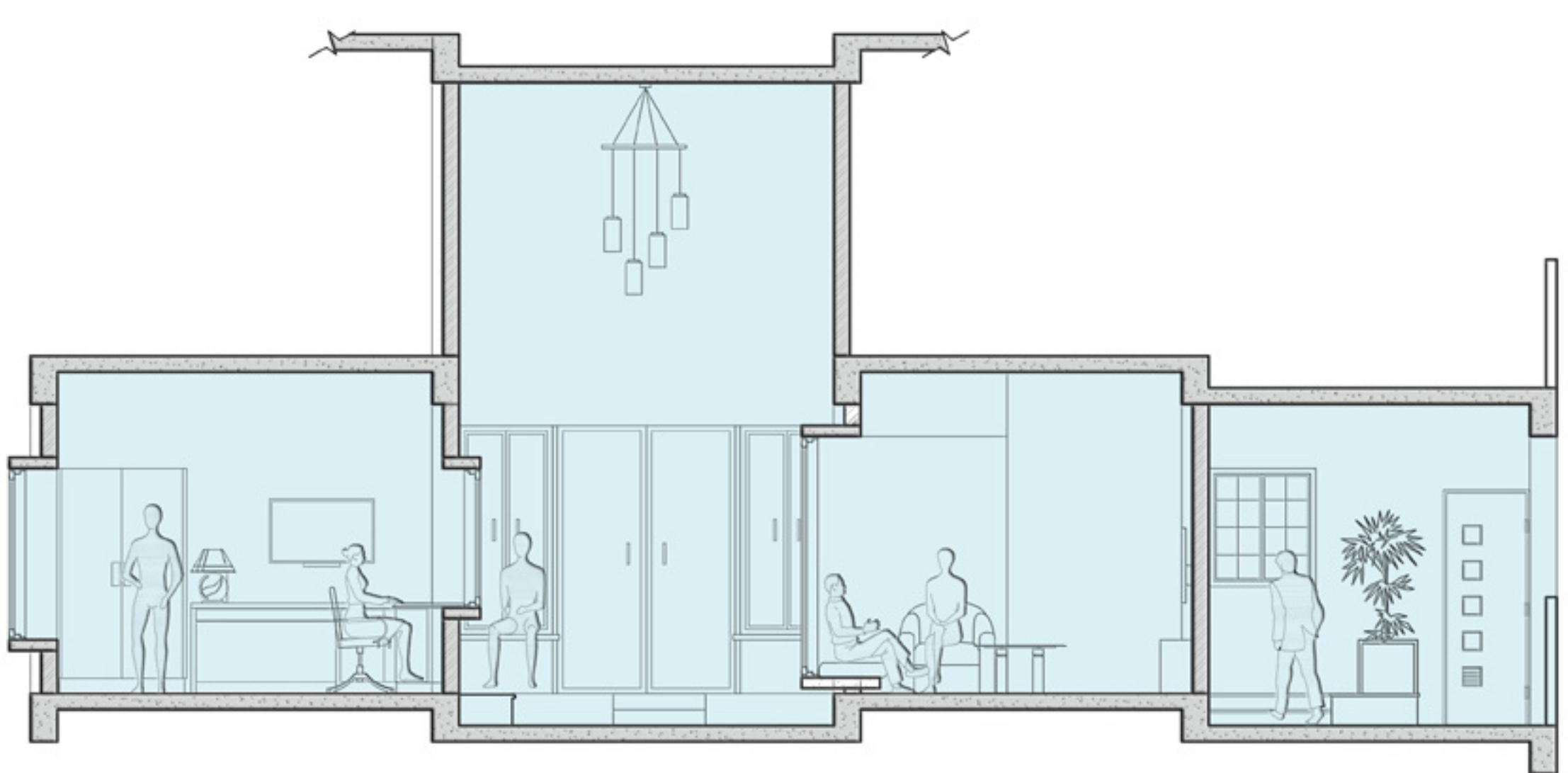
Started putting the double volume space and started finding relationship with that.



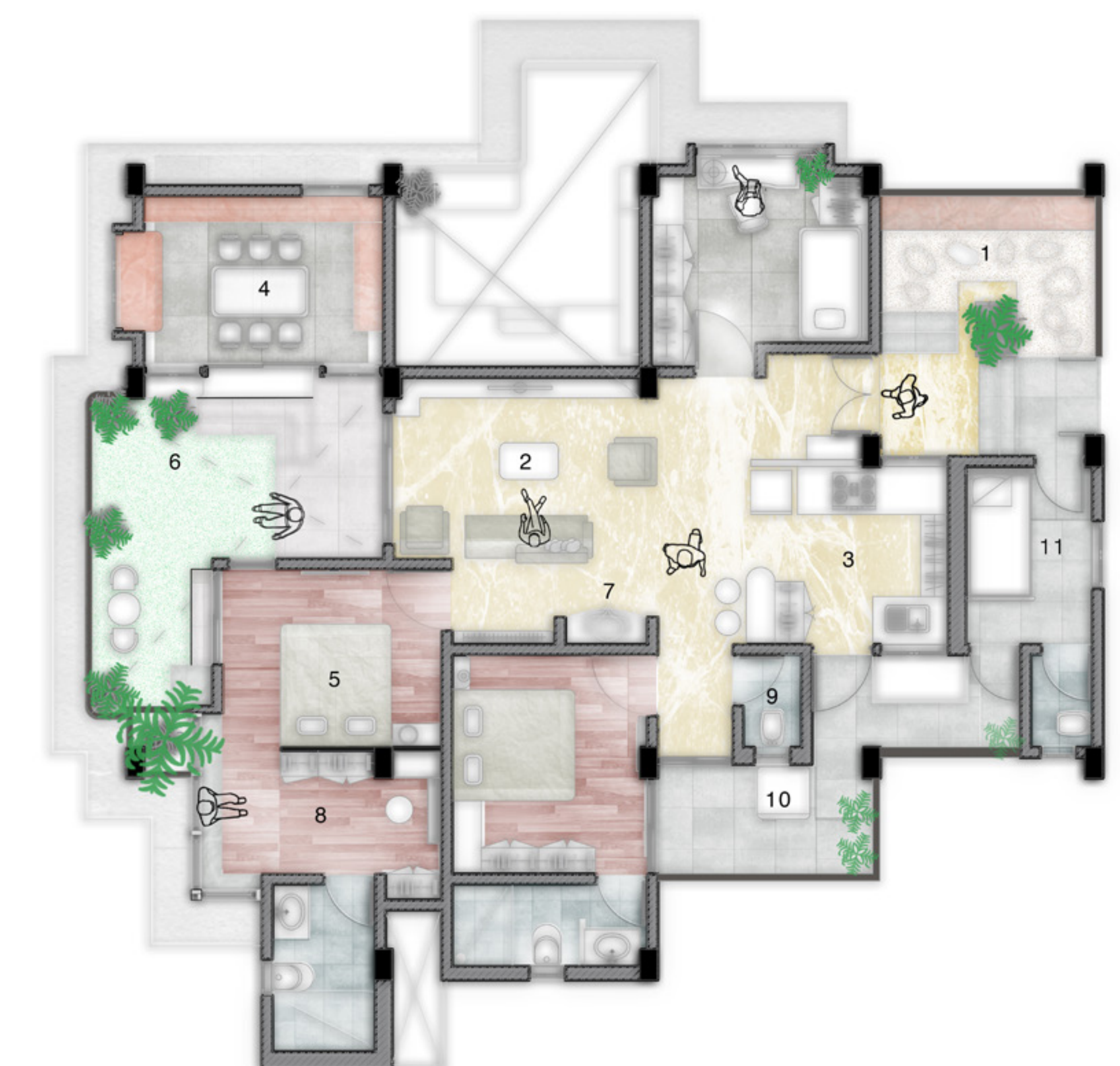
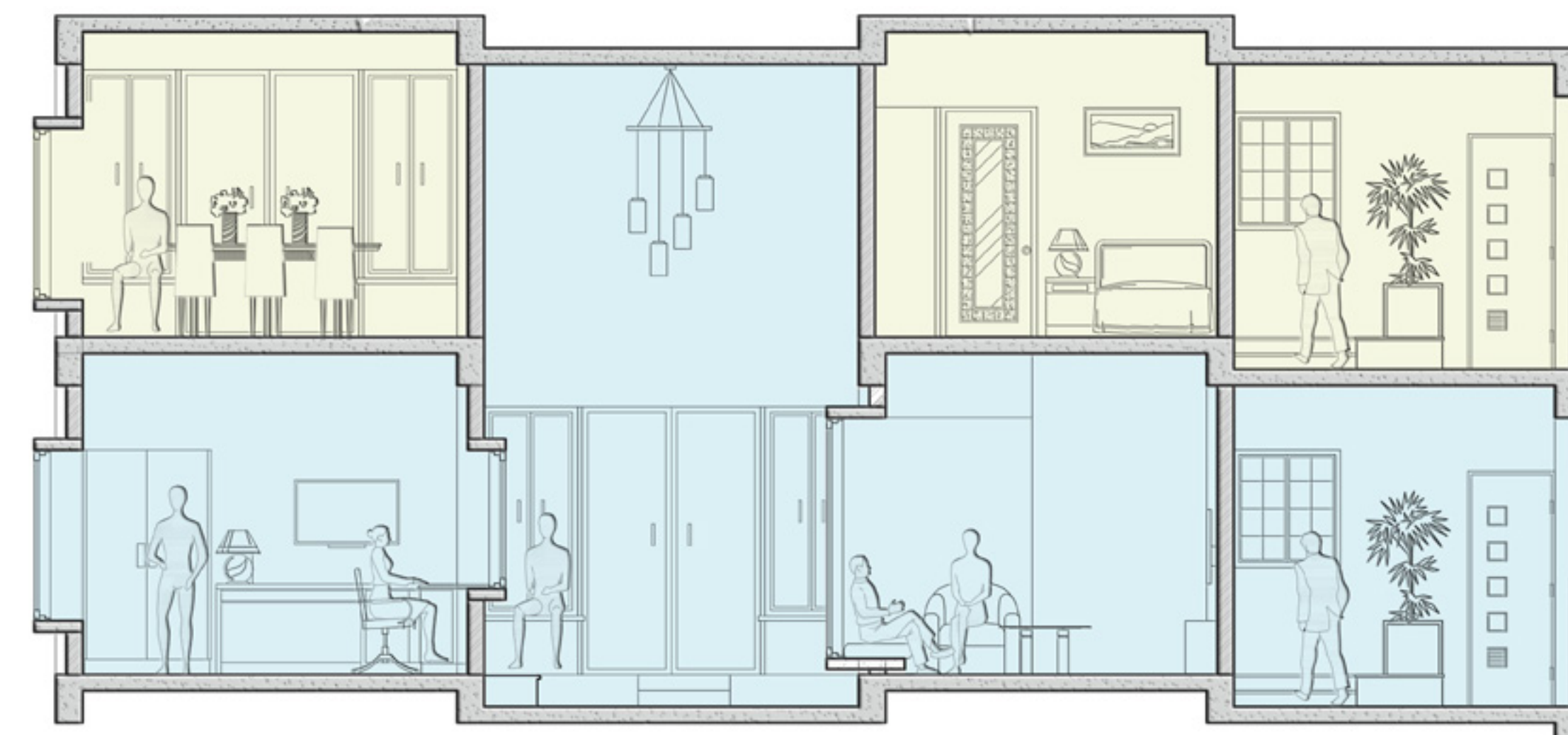
UNIT 1 PLAN SCALE 1:50



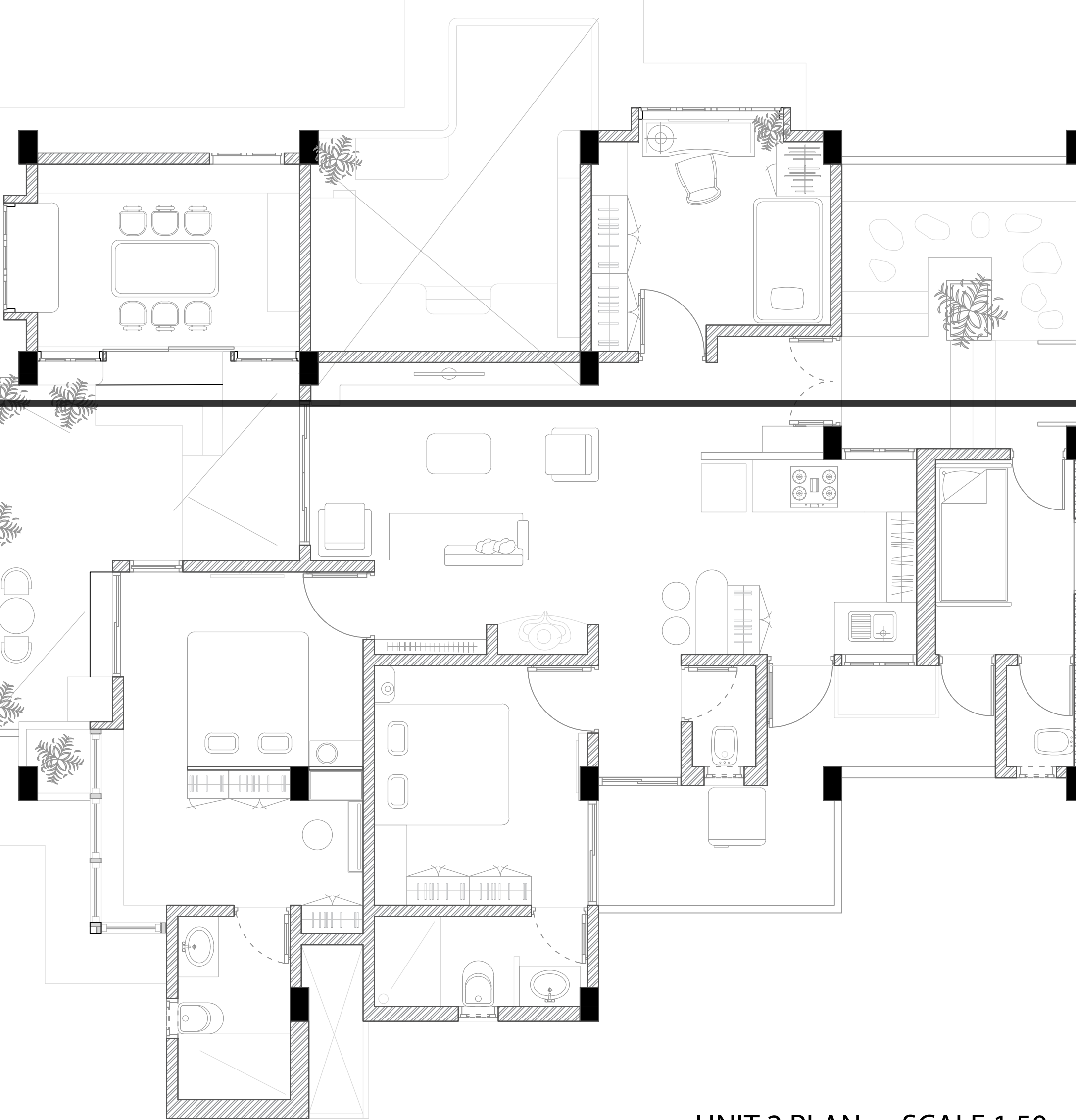
UNIT 1 PLAN SCALE 1:50



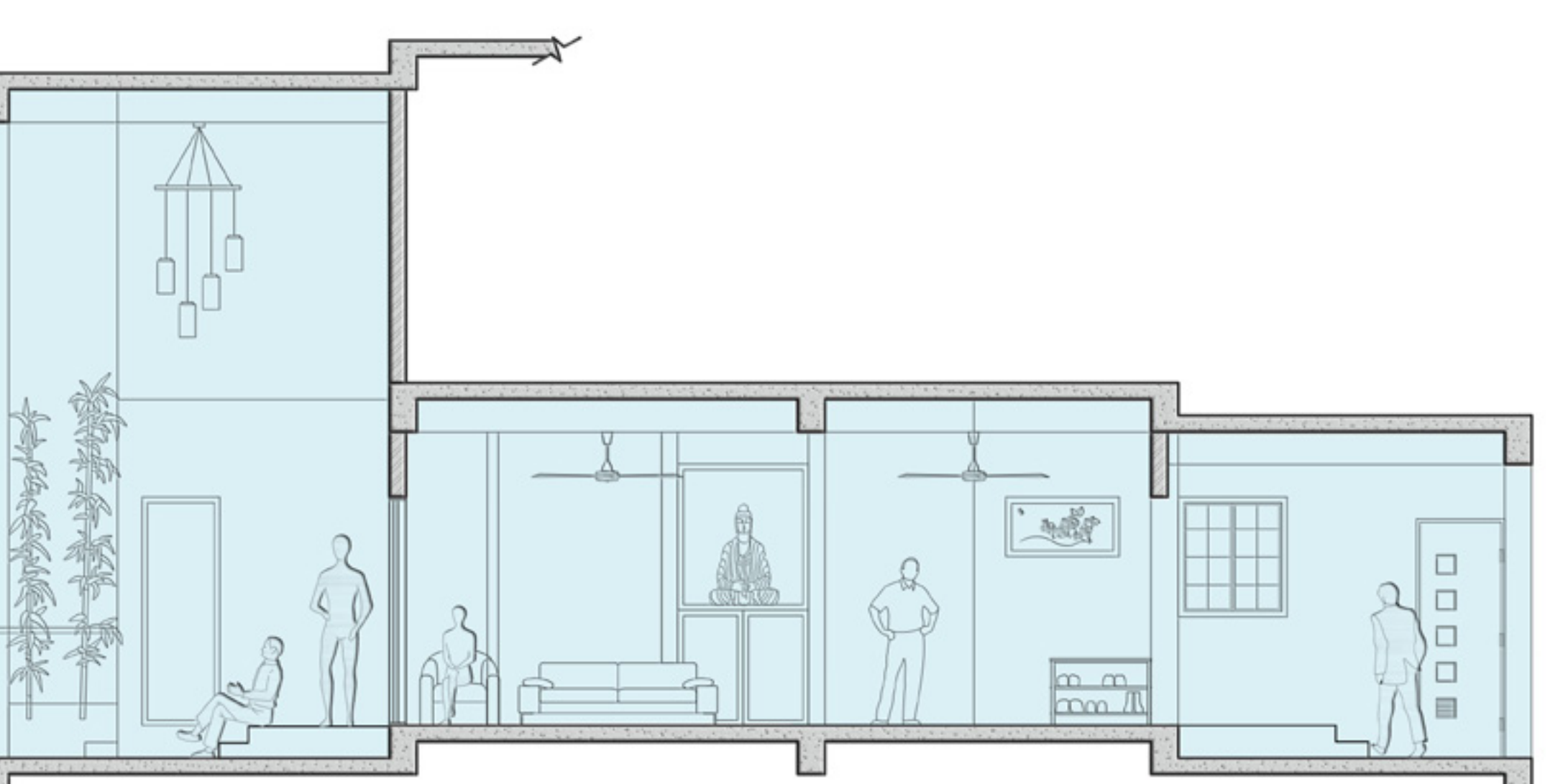
UNIT 1 SECTION SCALE 1:50



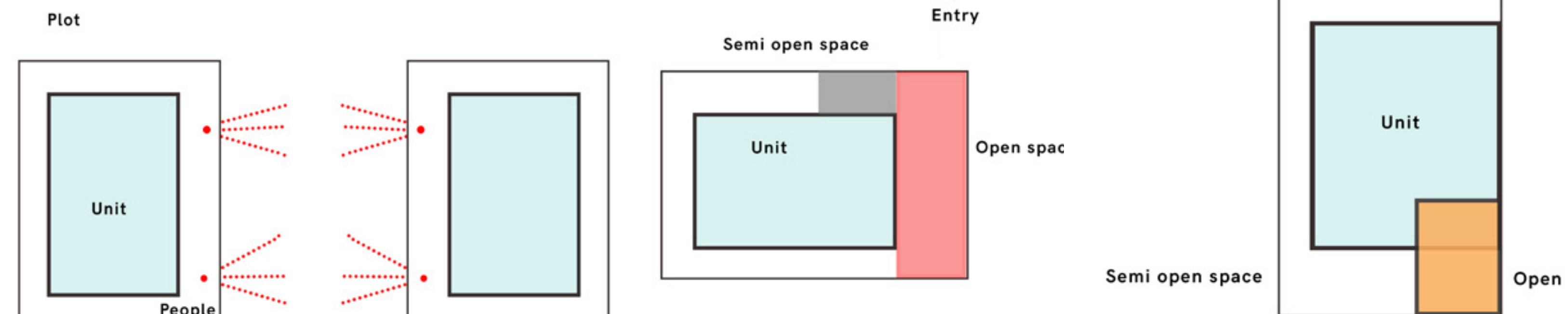
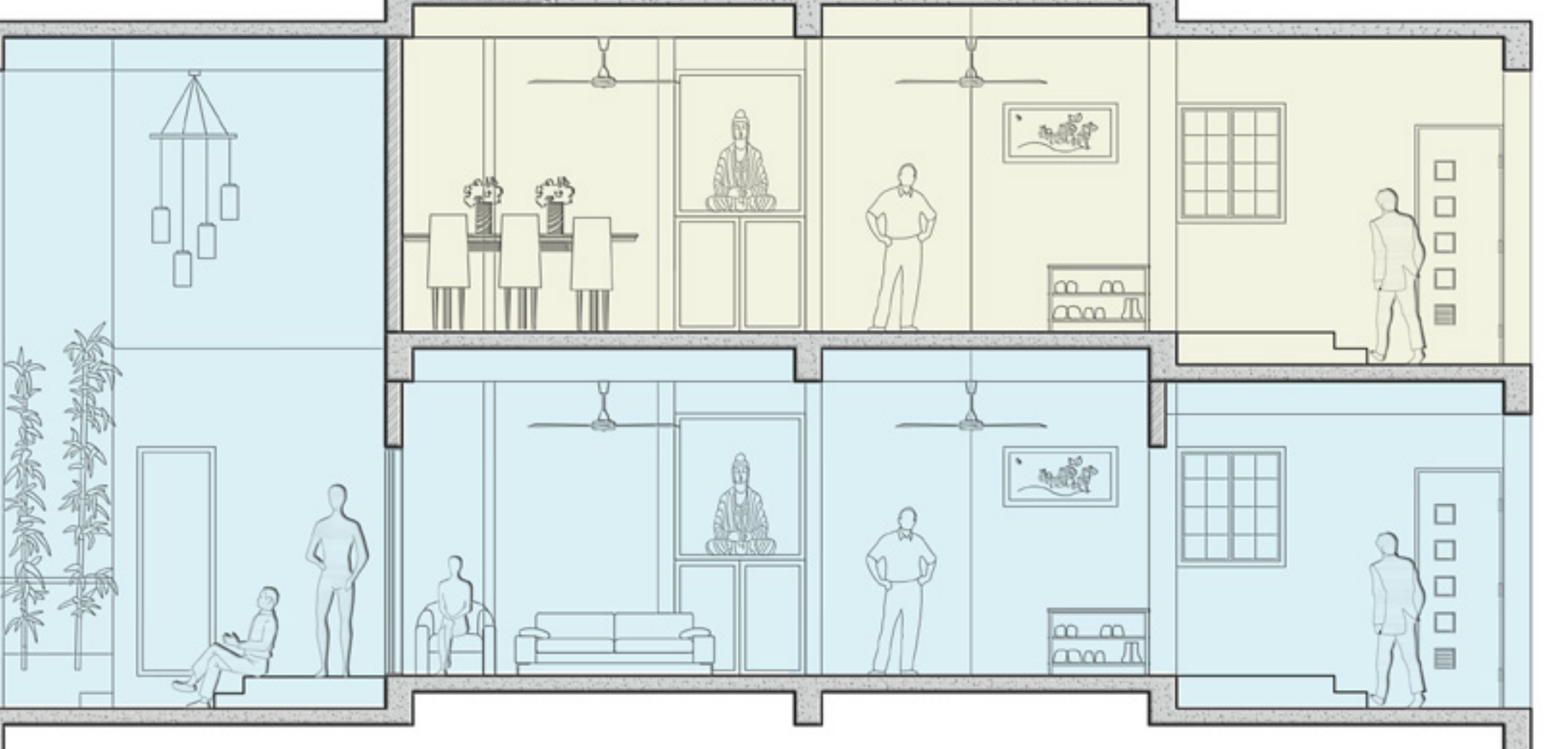
UNIT 2 PLAN SCALE 1:50



UNIT 2 PLAN SCALE 1:50



UNIT 2 SECTION SCALE 1:50



Activity in Otlo:

News paper reading

Gossips

Imaginary world of the children

Other house hold activity

Plan of the Otla.

Semi open space, open from the three side.

There is two steps which creates the boundry and separete the space.

also there is small garden and some seating spaces fro the gatering .

Also it creates the opportunity to interact with the others.

Section from the otla.

It is 300mm down from the main floor of the home and 150 mm for the waterproofing and soil.

Utility spaces plan , section