

BOUNDARIES OF A HOME

Home culture seminar

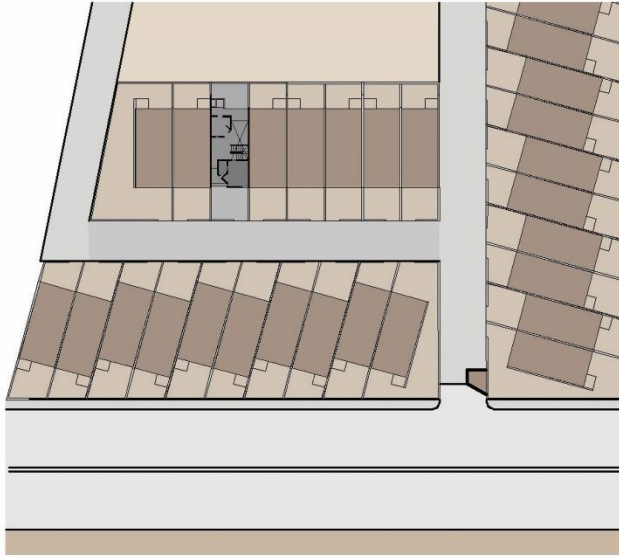
Studio L3 | Monsoon 2019
Oikopolis: Attack of the Clones

Himani
UA1515

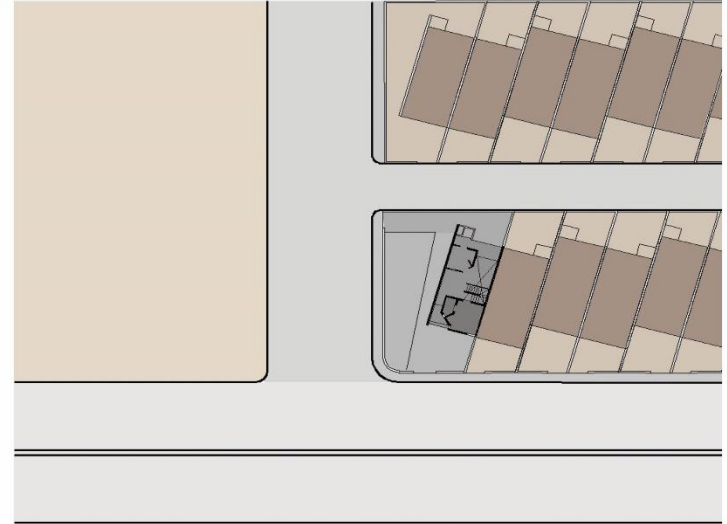
A home is not just a building or composition of walls, it extends to the built and un-built boundaries around the home. These boundaries are not just physical interventions but also the psychological perceptions.

Here, some of the examples of the boundaries are mapped for different house-types to understand the boundaries.

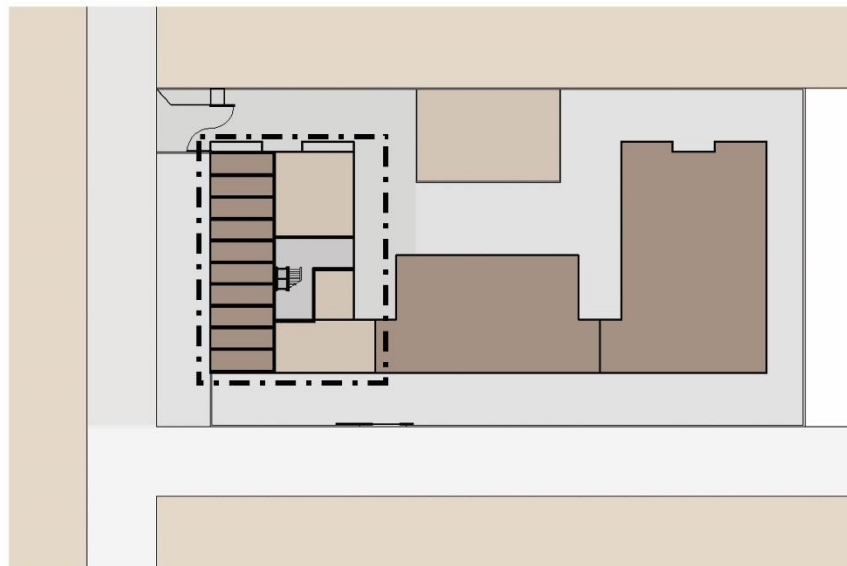
Housetypes



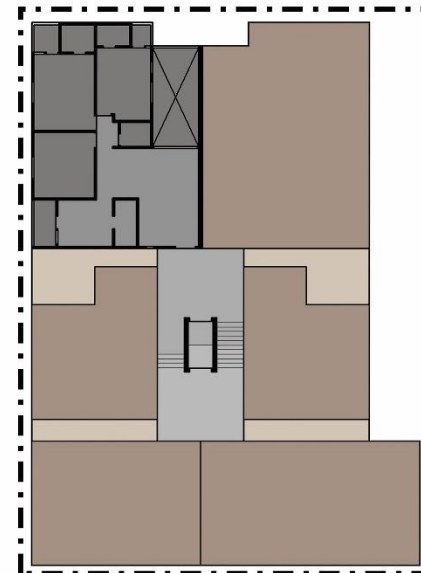
House 1 - row house - internal street



House 2 - row house - main road



House 3 - apartments - first floor, with shops below

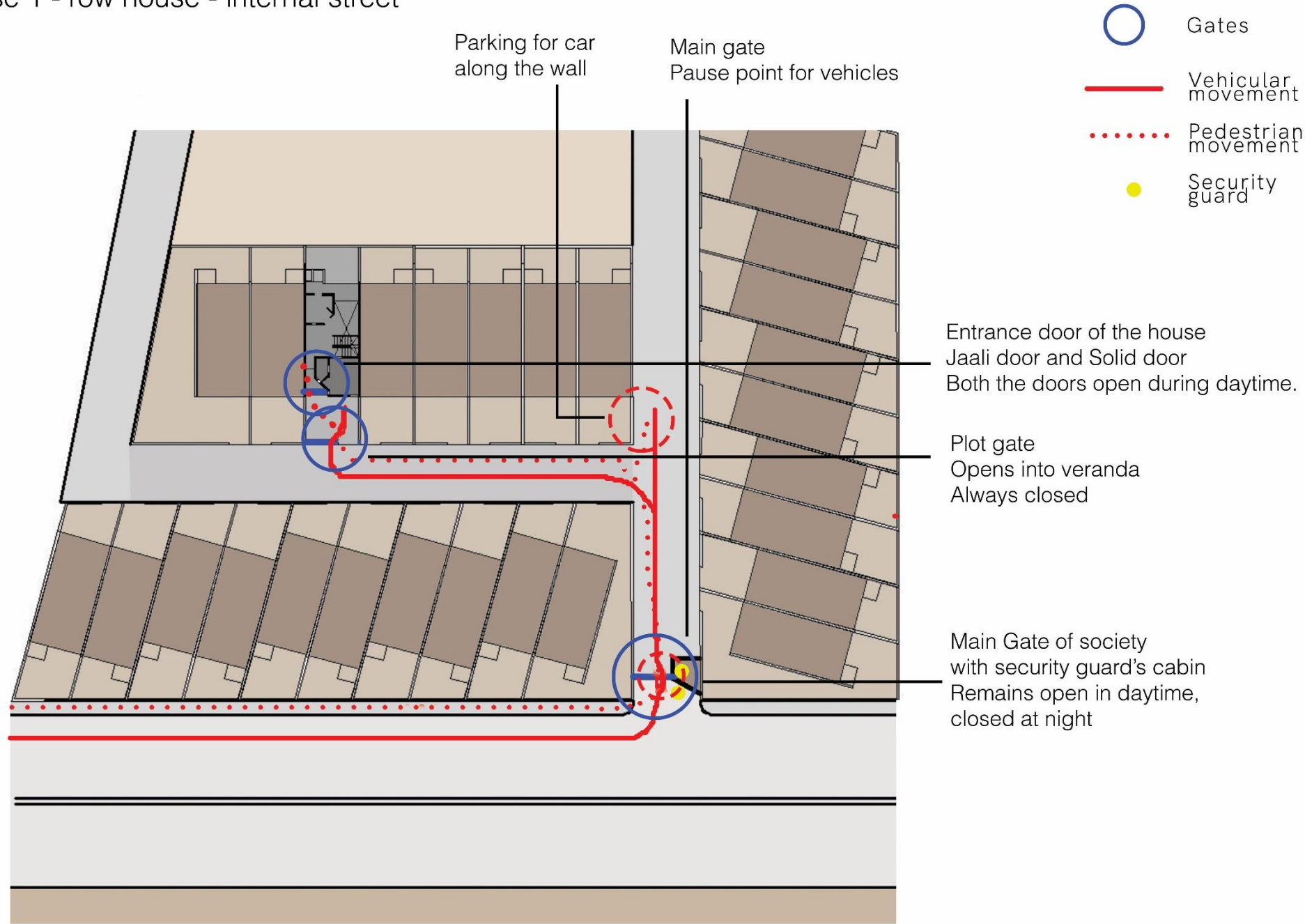


First Floor

Physical Boundaries

Boundaries for mass-housing schemes are generally marked through
Compound walls, Gates or Plinths.

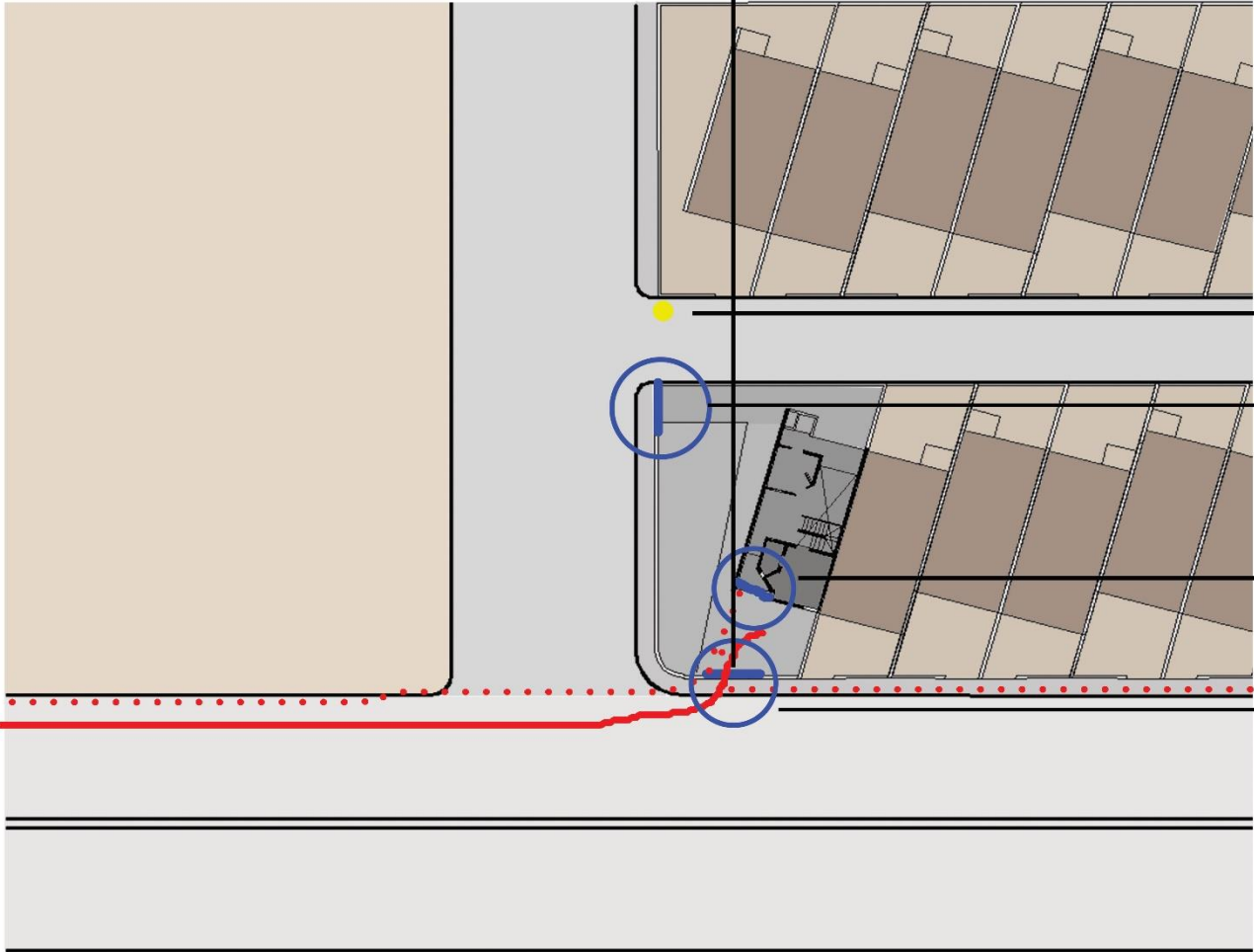
House 1 - row house - internal street



House 2 - row house - main road

Entry on the main road
Doors always closed
No threshold space outside
the compound wall
Parking inside the plot

- Gates
- Vehicular movement
- Pedestrian movement
- Security guard



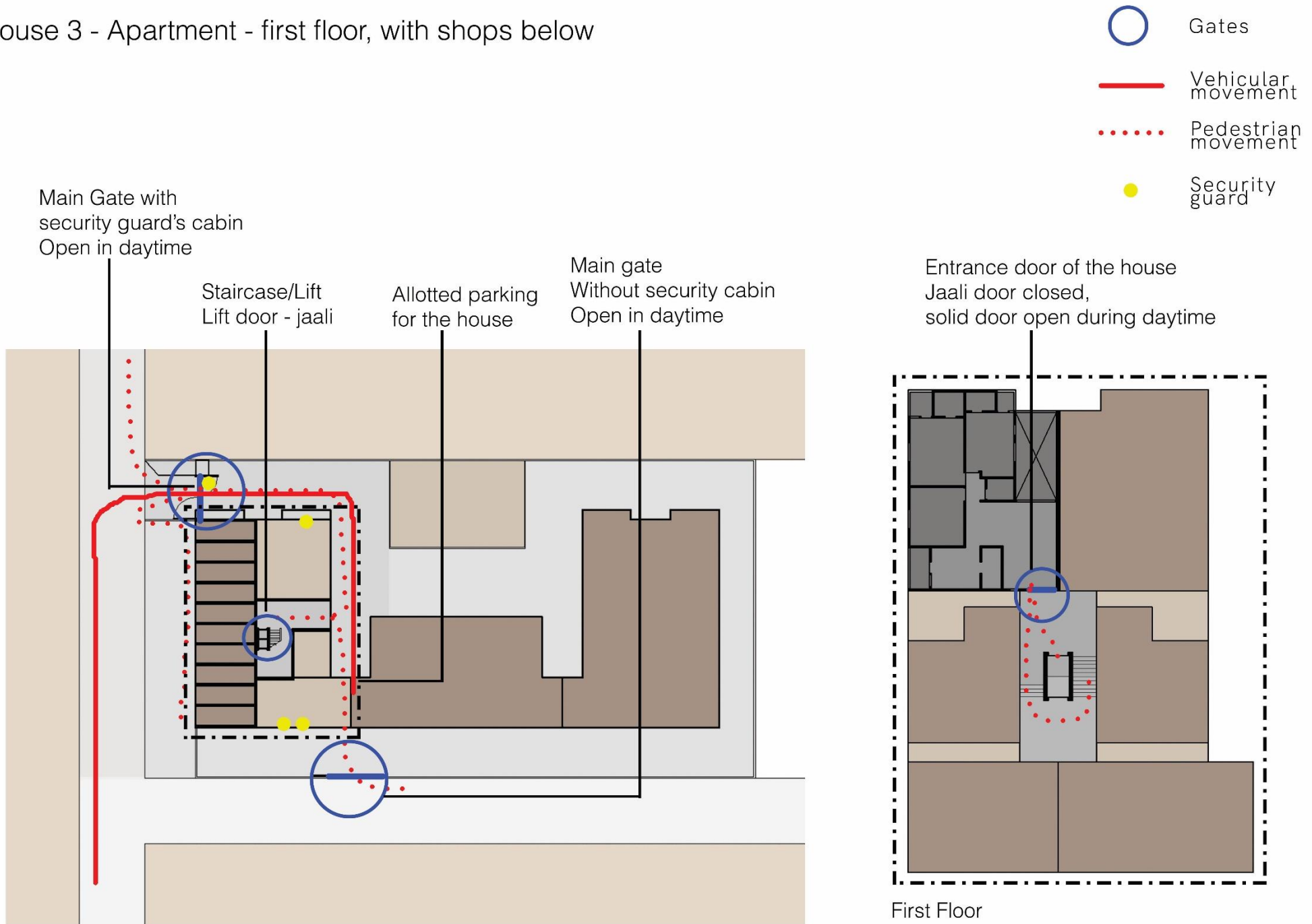
No Gate. Security guard always present.

Gate on internal road
Always locked
Open only on occasions

Entrance door of the house
Jaali door closed, solid door open.

Plot gate
Opens into veranda
Always closed

House 3 - Apartment - first floor, with shops below



First Floor

Psychological Boundaries

There are some boundaries that we create on the bases of experience, memories and perceptions. These boundaries are mapped through a few questions and answers.

Questions:

How far do you allow your kids to go to play?



How far do you go in your house-clothes/footwear?



If you are coming back home alone late night, from which point do you start feeling comfortable and safe?



Territory of dogs/cats/stray animals



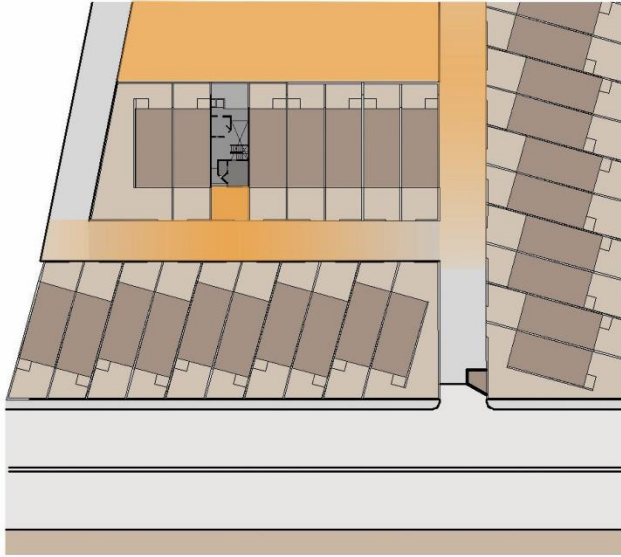
Where do you drop off your guests?



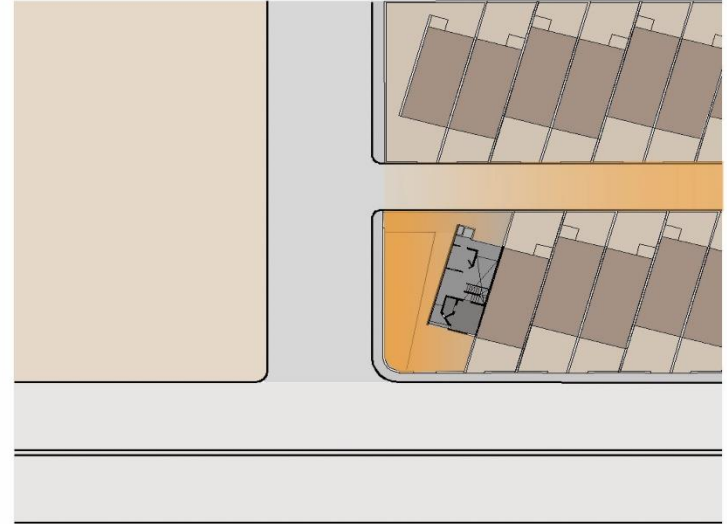
How much do you extend your house when there is occasion/puja/festival in your house?



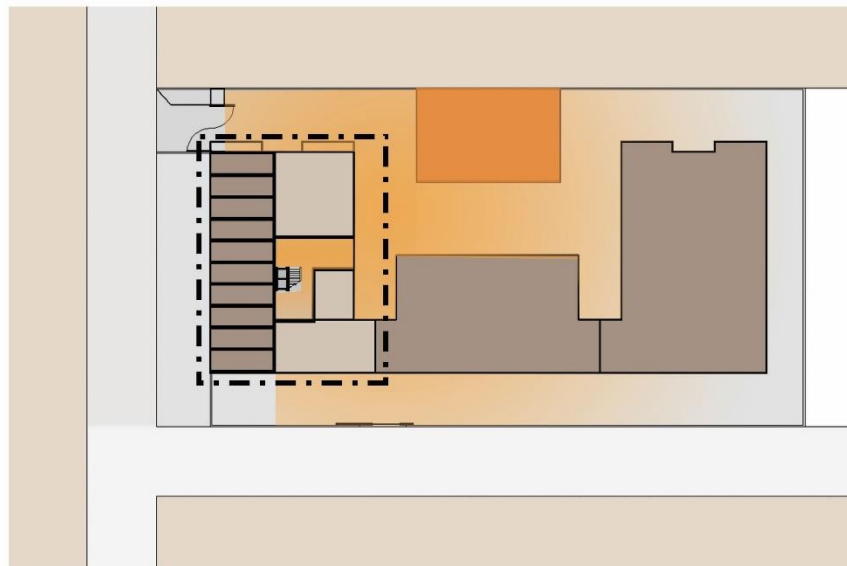
How far do you allow your kids to go to play?



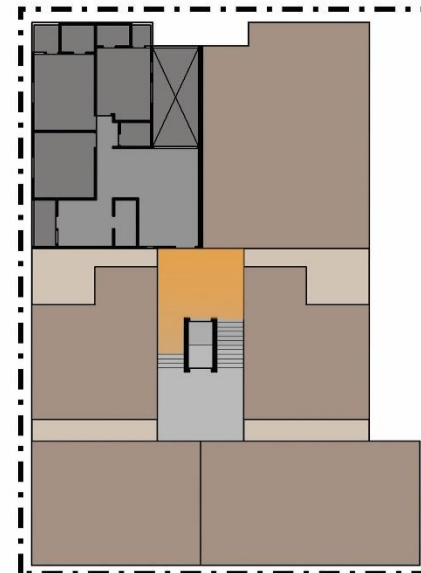
House 1 - row house - internal street



House 2 - row house - on corner, on main road



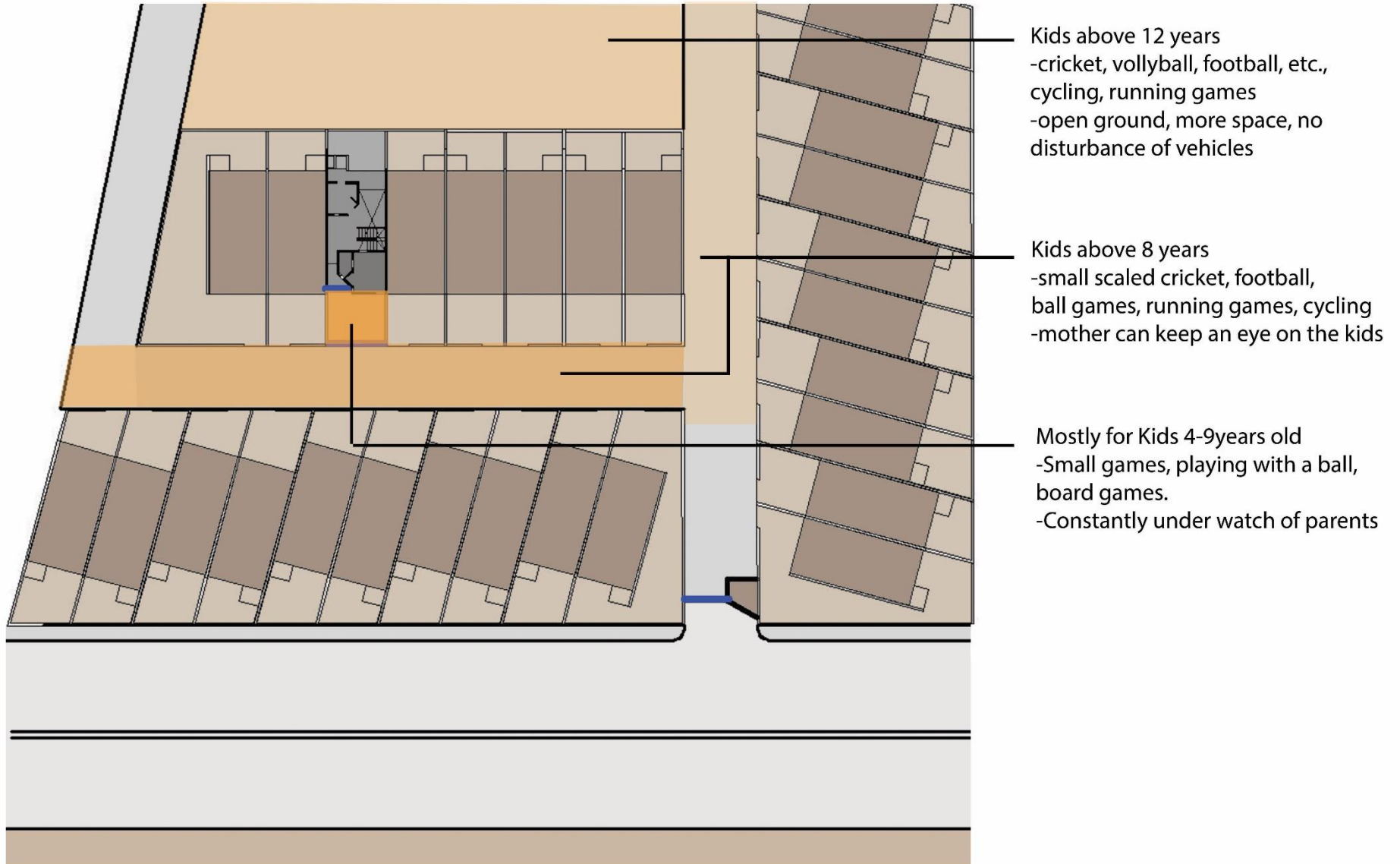
House 3 - apartments - first floor, with shops below



First Floor

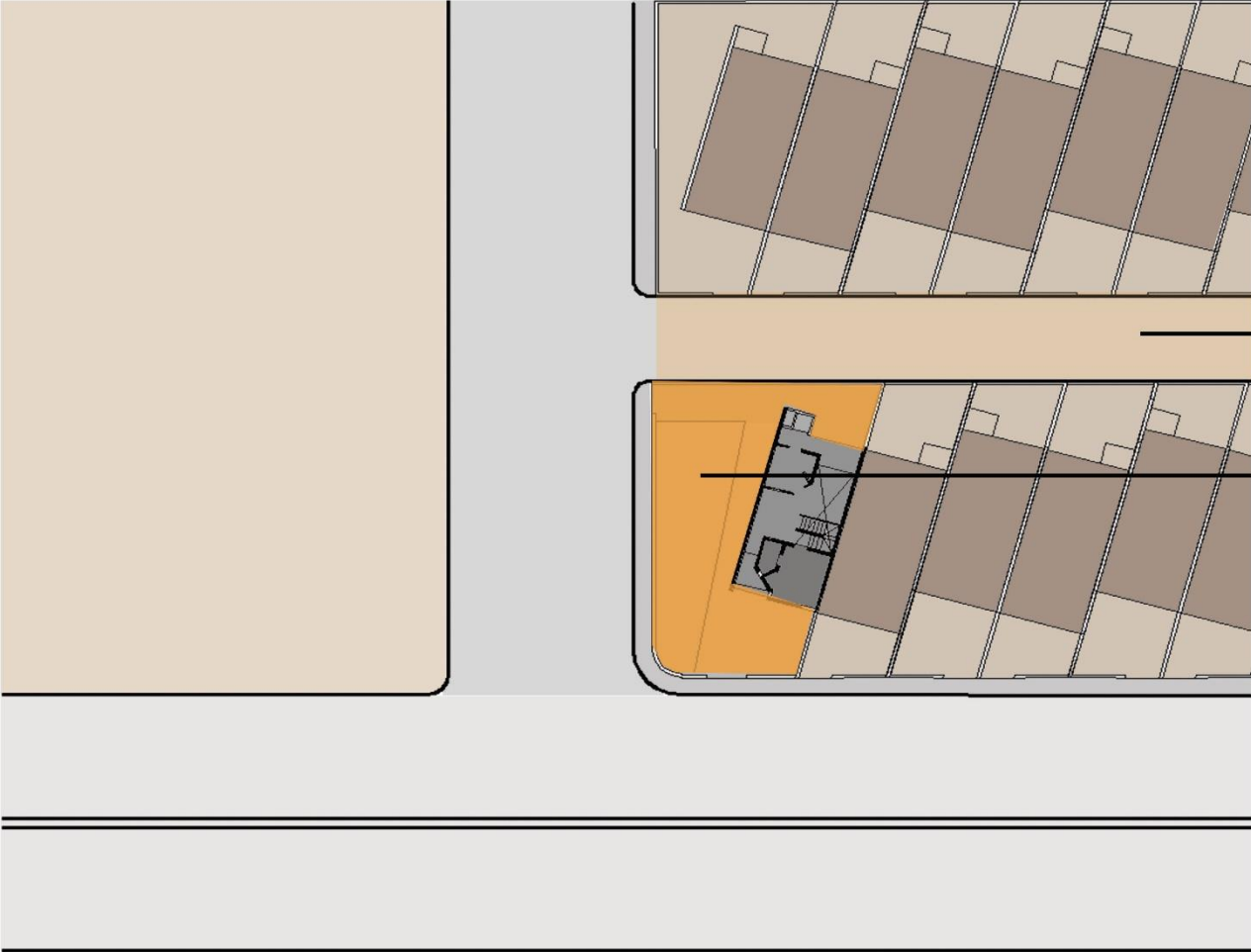
How far do you allow your kids to go to play?

Age
toddlers to teens



How far do you allow your kids to go to play?

Age
toddlers to teens



Kids above 12 years old
Younger kids are not allowed there
because of anonymity

Most of the time inside house.
No place to play right outside the house.

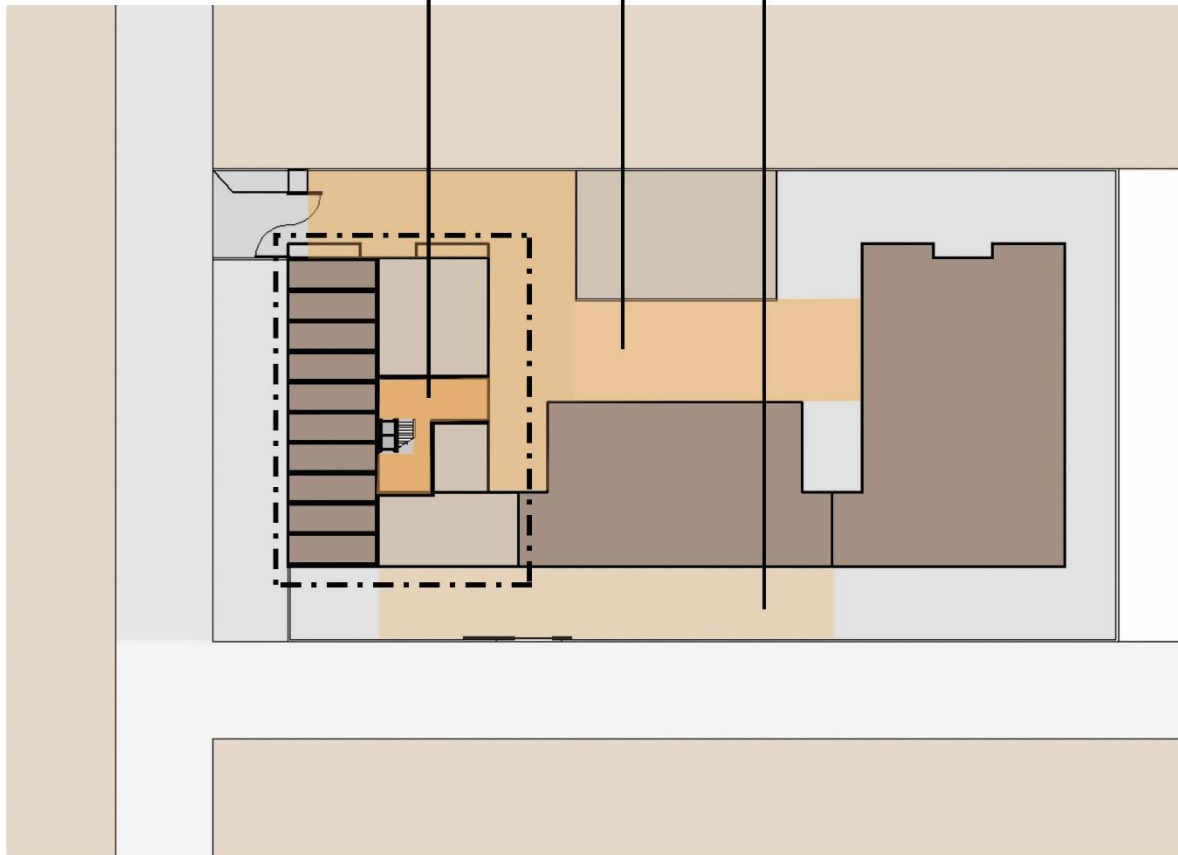
How far do you allow your kids to go to play?

Age
toddlers to teens

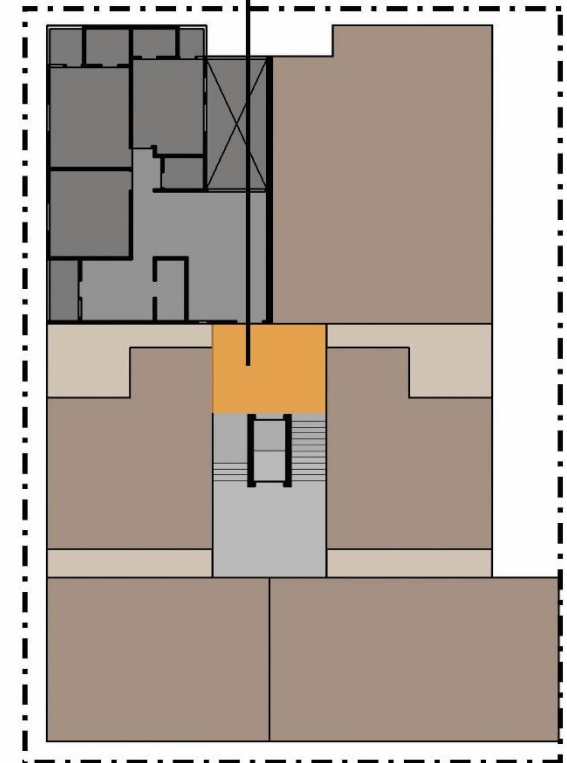
Kids above 12years
-cricket, vollyball, cycling
-open space with concrete paving

Kids 5-12years old
-small games, toys
-granite flooring

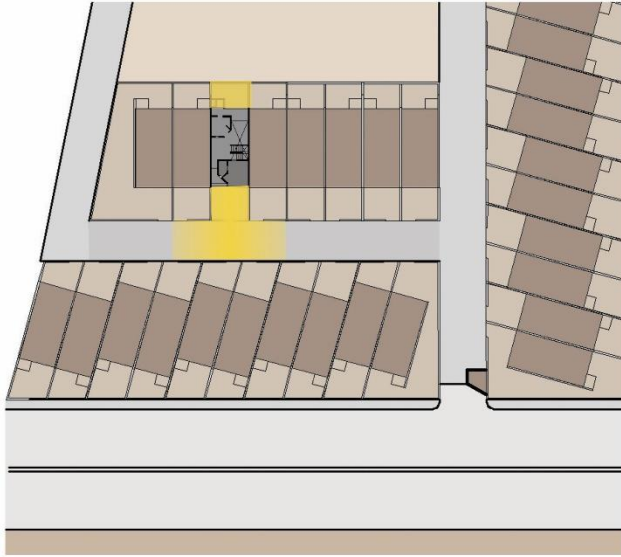
Teens above 15years
-cricket, vollyball, football
-no disturbance of vehicles
-less windows/balcony on that side



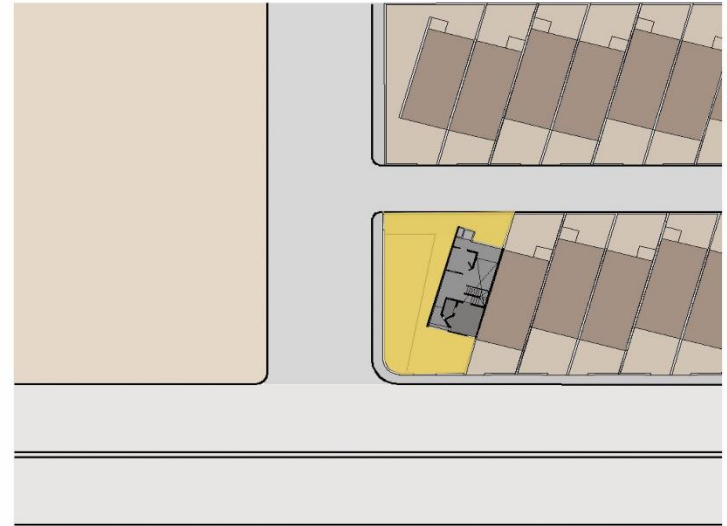
Mostly kids 4-12years old
-small games with ball, board games,
playing with toys
-Mother can keep an eye on kids,
trust on neighbours
-size of the passage



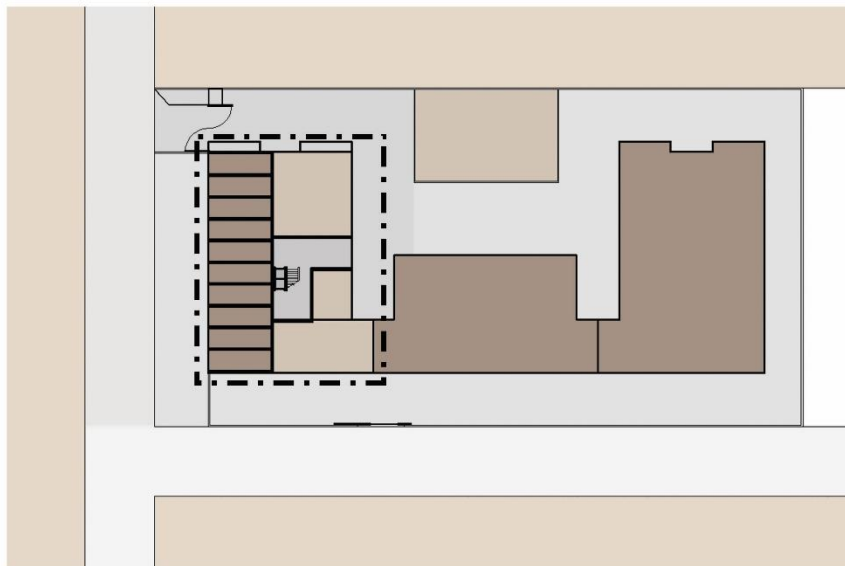
How far do you go in your house-clothes/footwear?



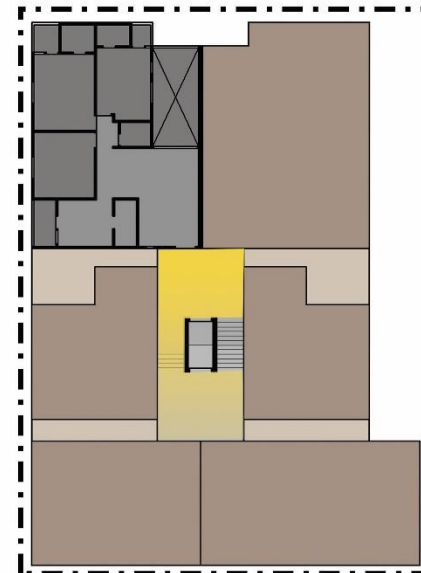
House 1 - row house - internal street



House 2 - row house - on corner, on main road



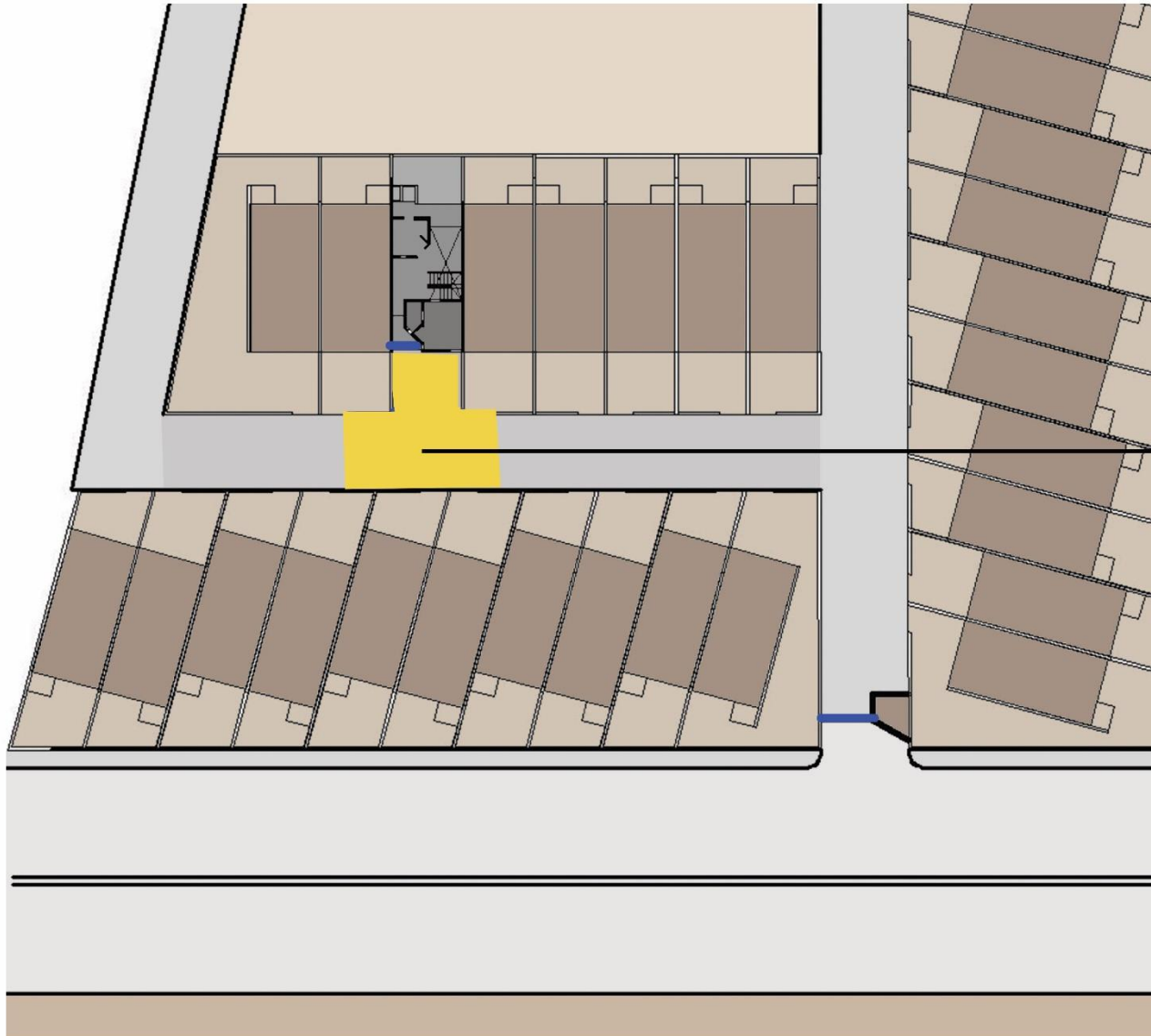
House 3 - apartments - first floor, with shops below



First Floor

How far do you go in your house-clothes/footwear?

More to less likely of
wearing house-clothes

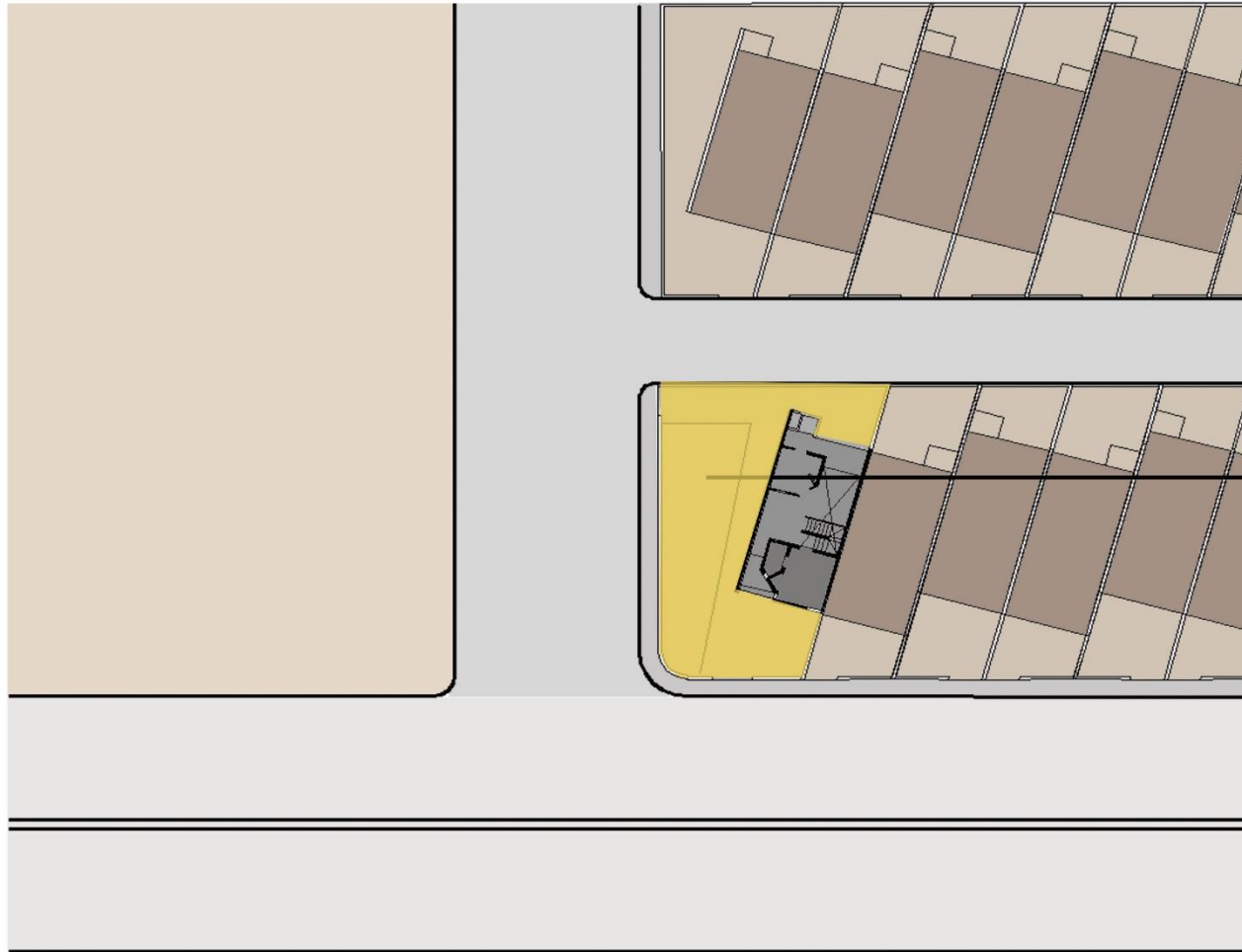


For women and girls of the house, distance they have to walk is directly related to the clothes/footwear they wear. They change the footwear/clothes if the distance is more than immediate neighbourhood.

For men, the boundary extends to the gate of the society.

How far do you go in your house-clothes/footwear?

More to less likely of
wearing house-clothes

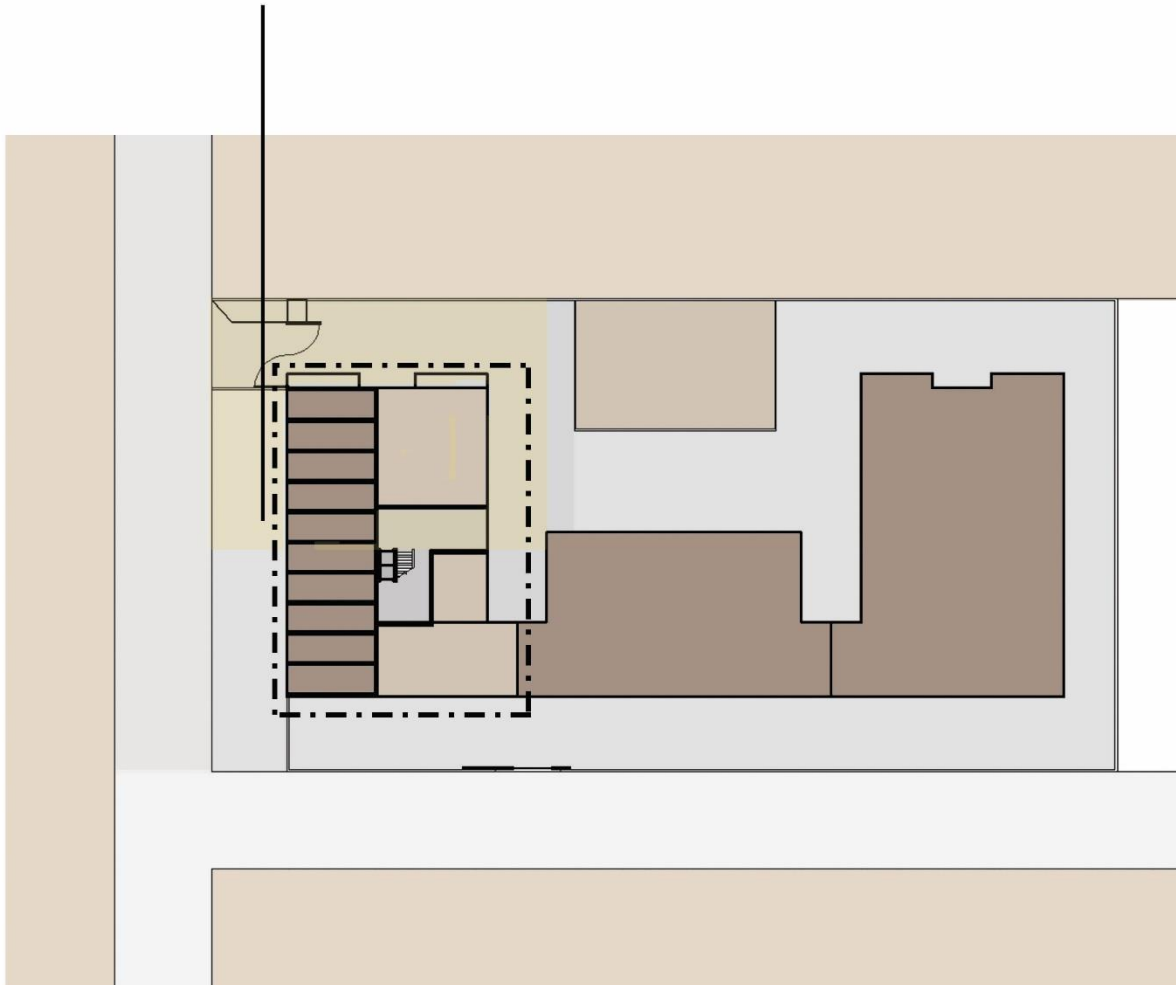


The immediate context of the house makes the people change clothes or footwear before stepping out. As the main road is right outside the plot, it is important to them to look presentable when they step out.

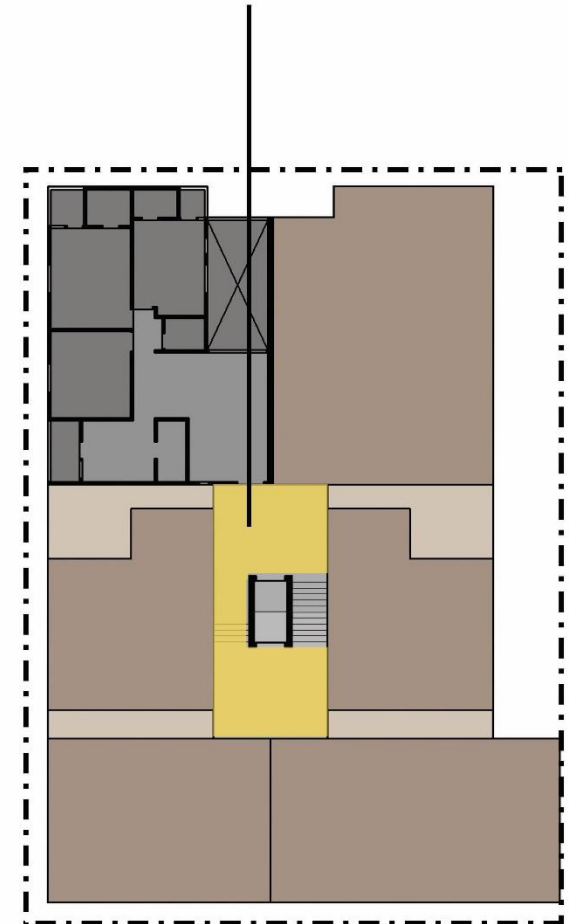
How far do you go in your house-clothes/footwear?

More to less likely of
wearing house-clothes

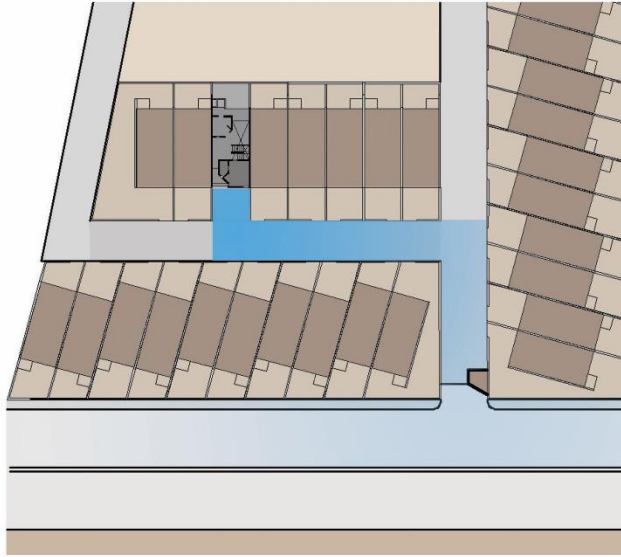
Ladies in house clothes on ground floor
only in morning 6-8am
-To buy milk from the stall outside.
-Time when only women are out.



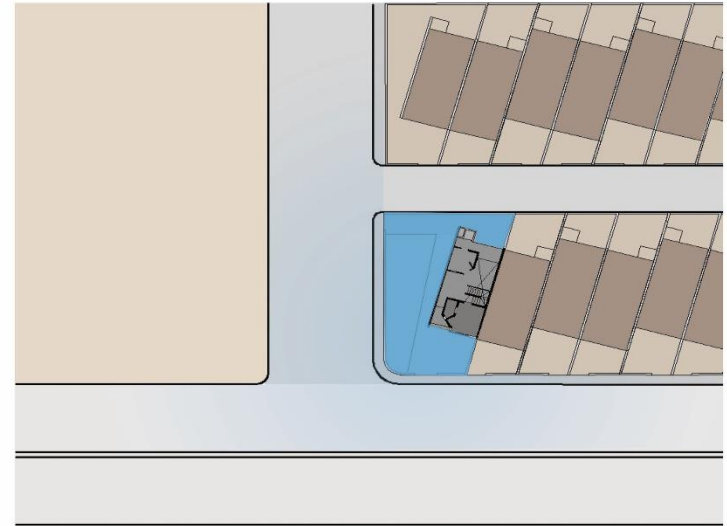
Familiarity to immediate
neighbours on the same floor.



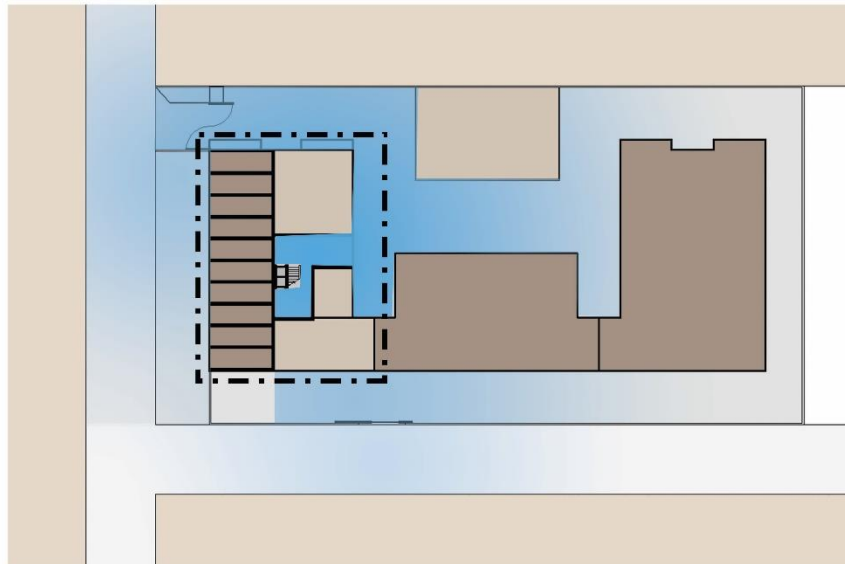
If you are coming back home alone late night, from which point
do you start feeling comfortable and safe?



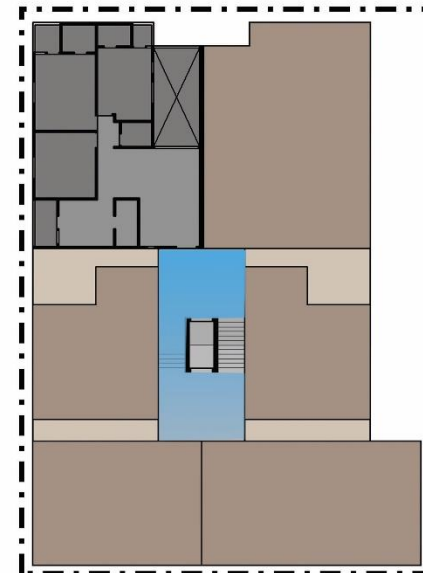
House 1 - row house - internal street



House 2 - row house - on corner, on main road



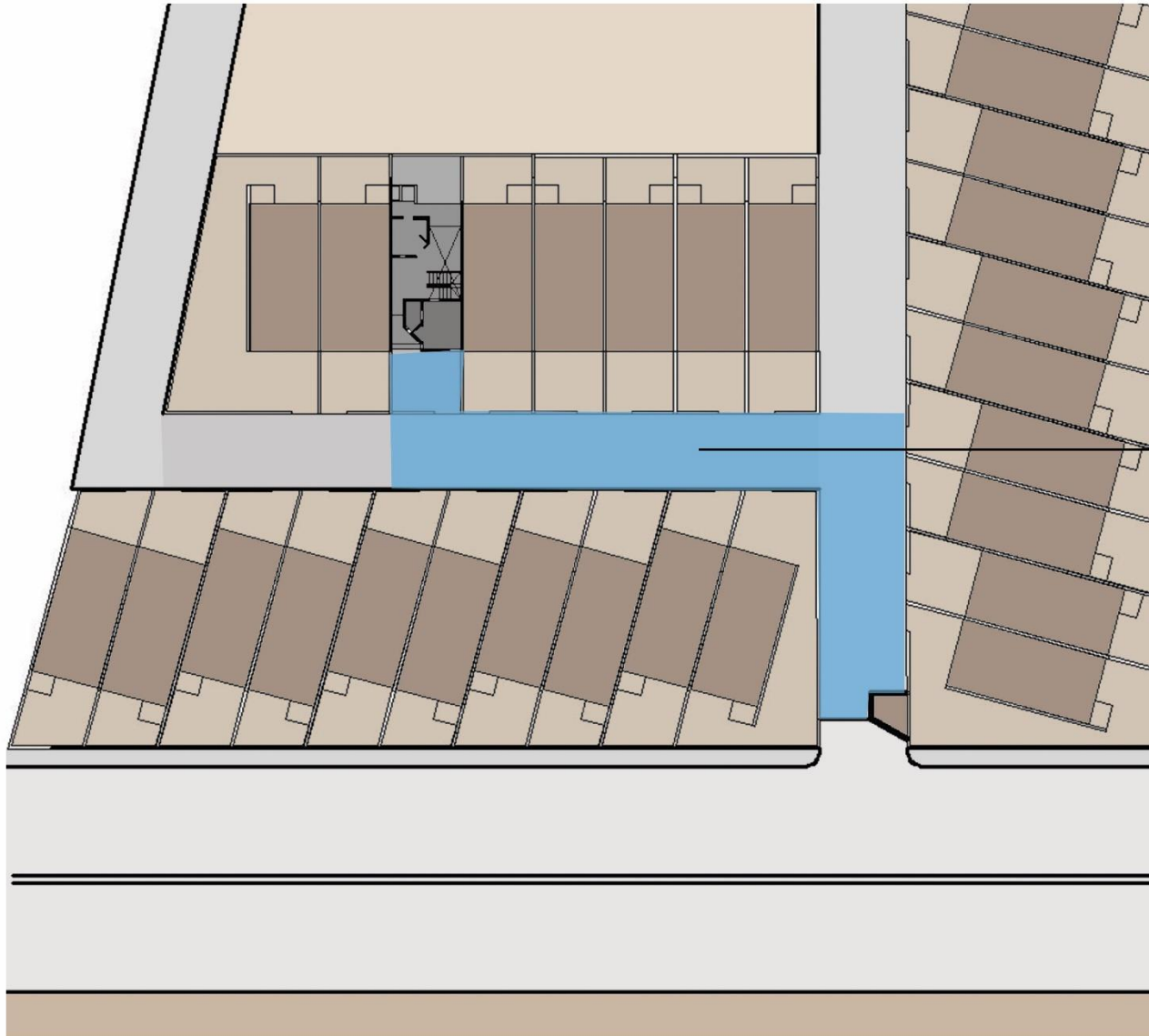
House 3 - apartments - first floor, with shops below



First Floor

More to less safe

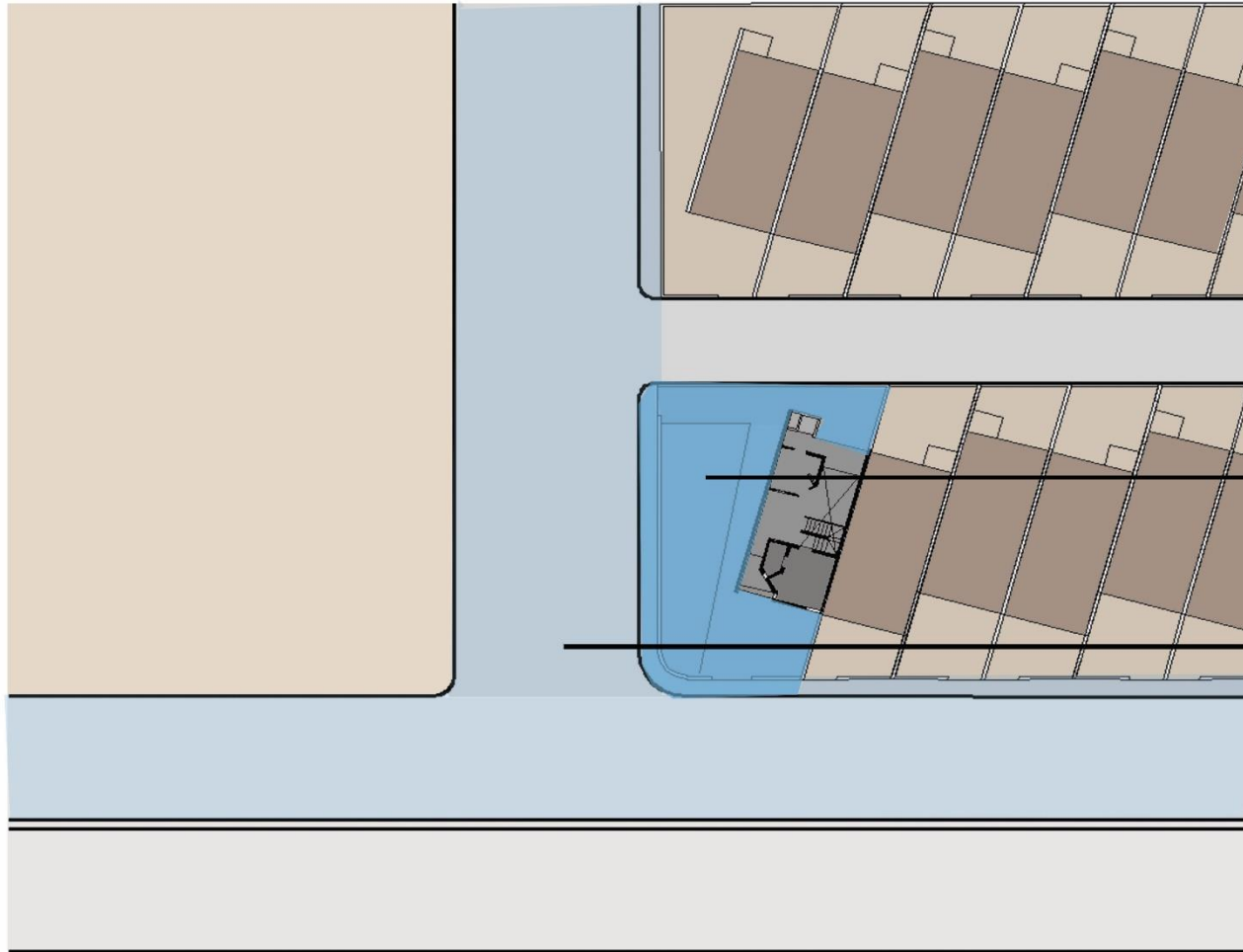
If you are coming back home alone late night, from which point do you start feeling comfortable and safe?



Safety felt after entering the main gate of society because of the familiar security guards, gate and familiarity of neighbourhood.

More to less safe

If you are coming back home alone late night, from which point do you start feeling comfortable and safe?



As the anonymity of the context is very high, the safety is felt after entering into the walled area. The footpaths outside is familiar and safe.

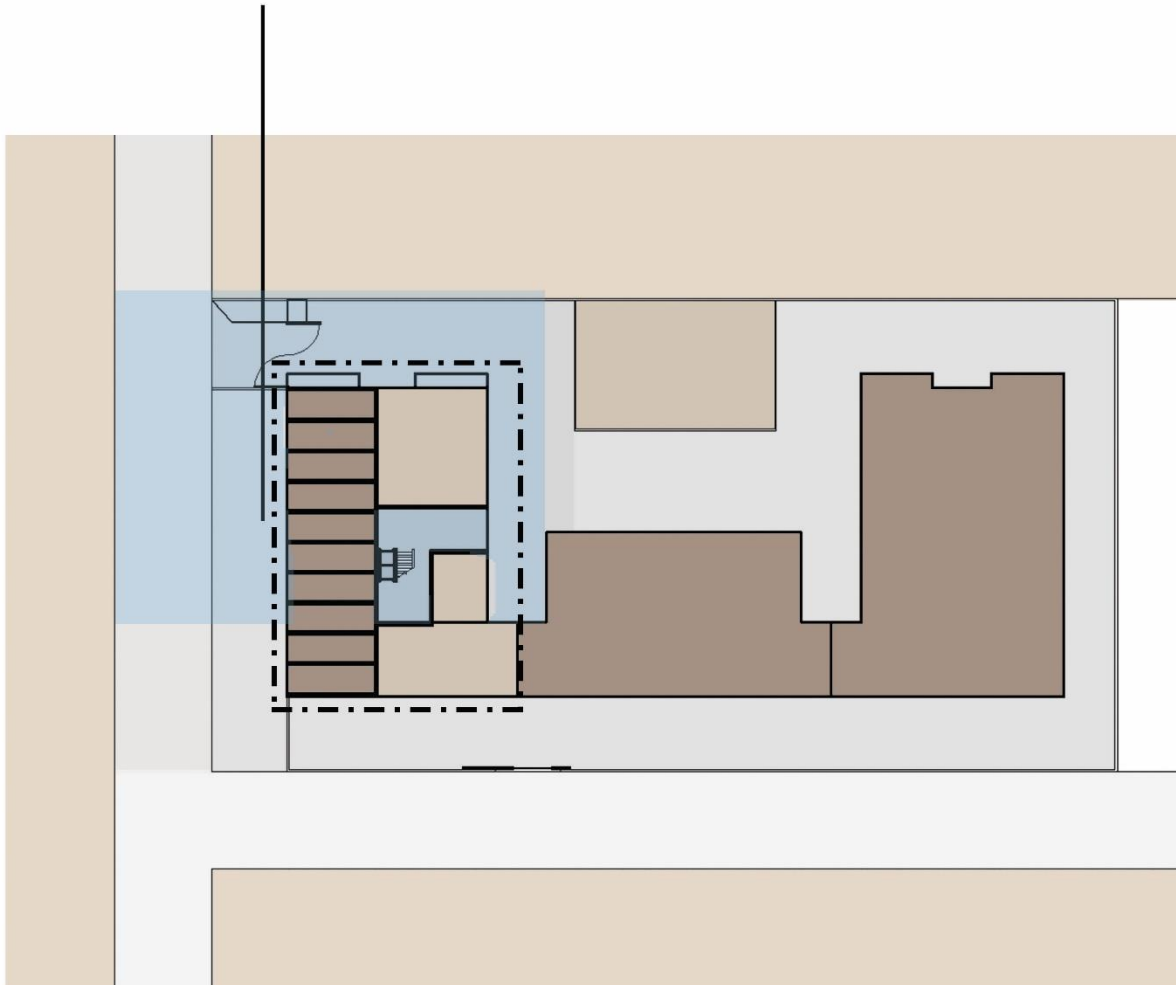
The roads are also safe to some extent because of the constant traffic and commercial buildings around are open till late.

If you are coming back home alone late night, from which point do you start feeling comfortable and safe?

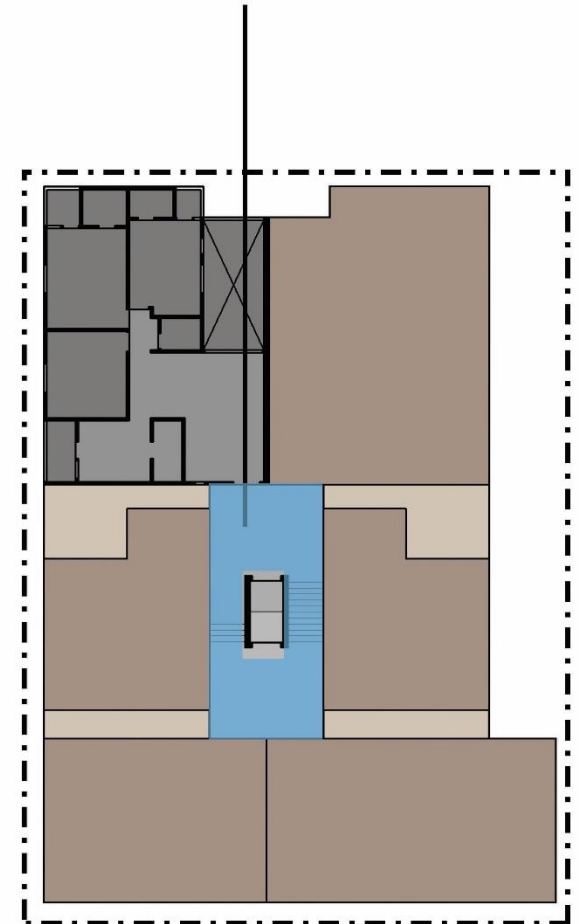
More to less safe

Safe after entering the gate

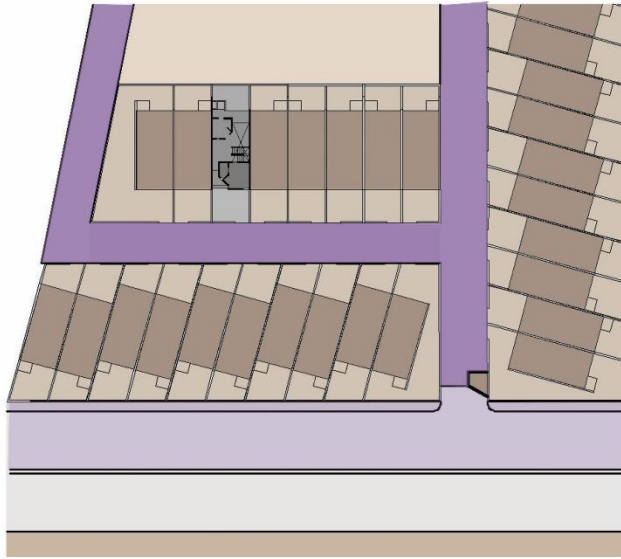
- safety not felt by women near the paan-cigarette shop always crowded by strangers (male)
- Safe after entering the gate because of familiarity



Familiarity to immediate neighbours on the same floor.
-Felt safer if any of the doors are open



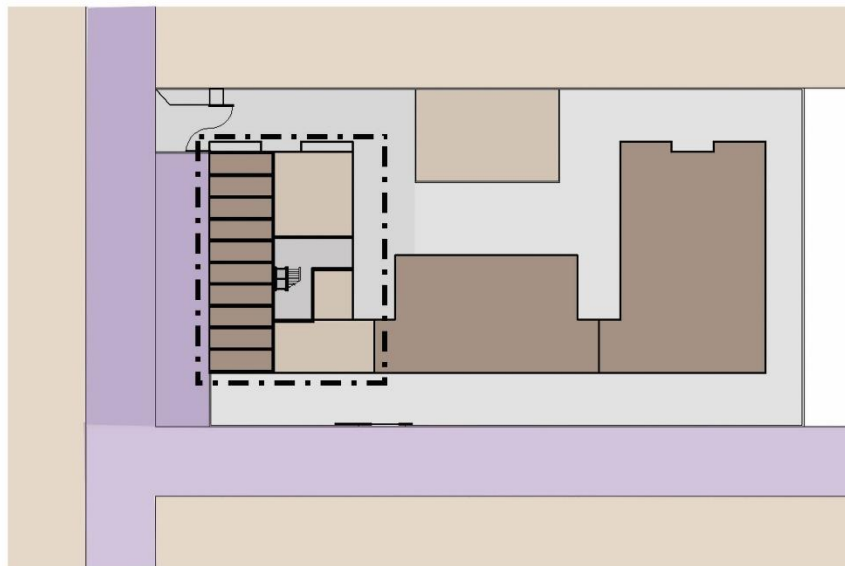
Territory of dogs/cats/stray animals



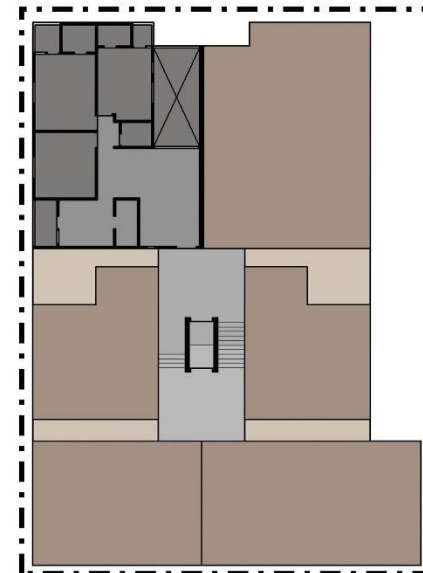
House 1 - row house - internal street



House 2 - row house - main road

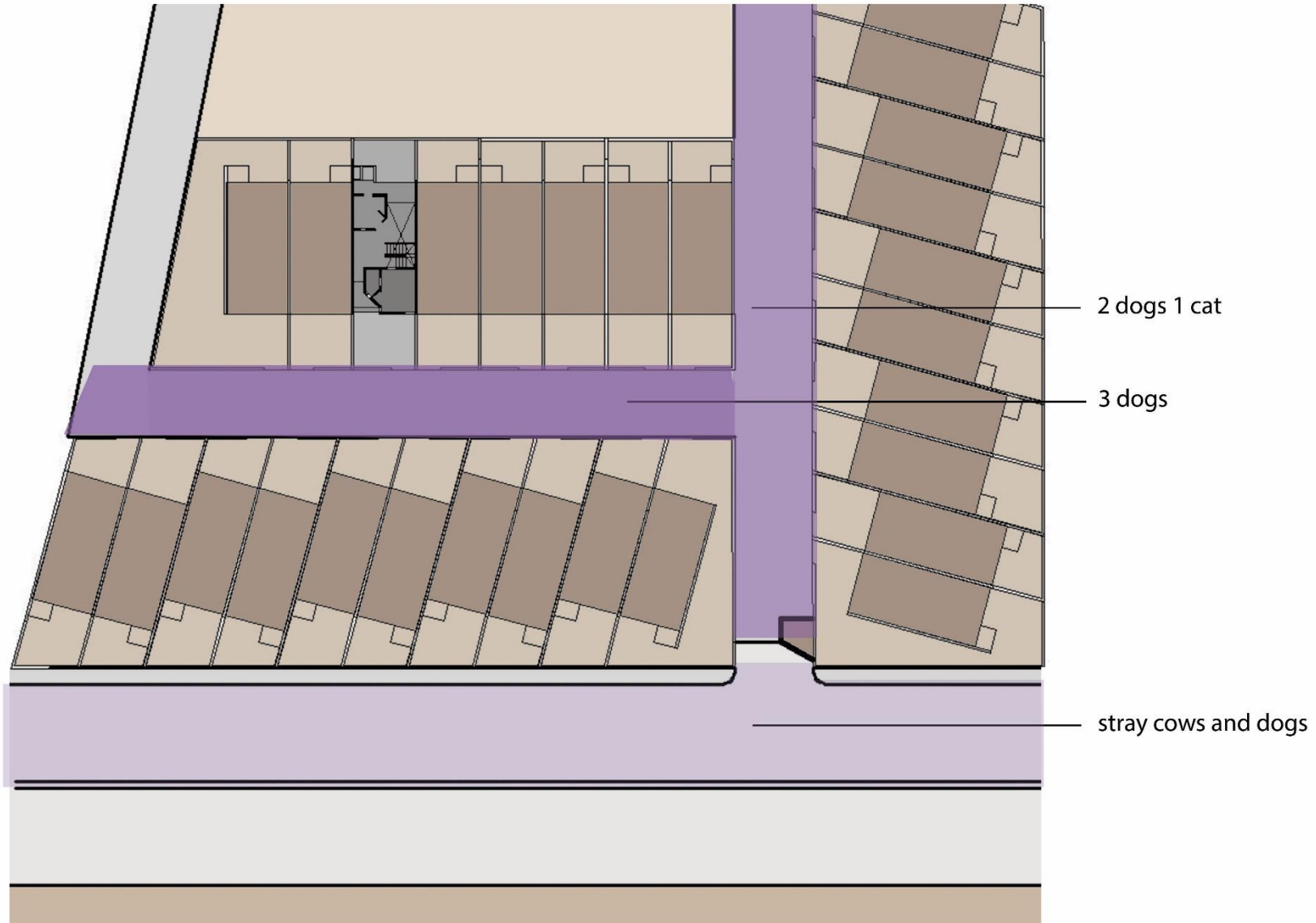


House 3 - apartments - first floor, with shops below

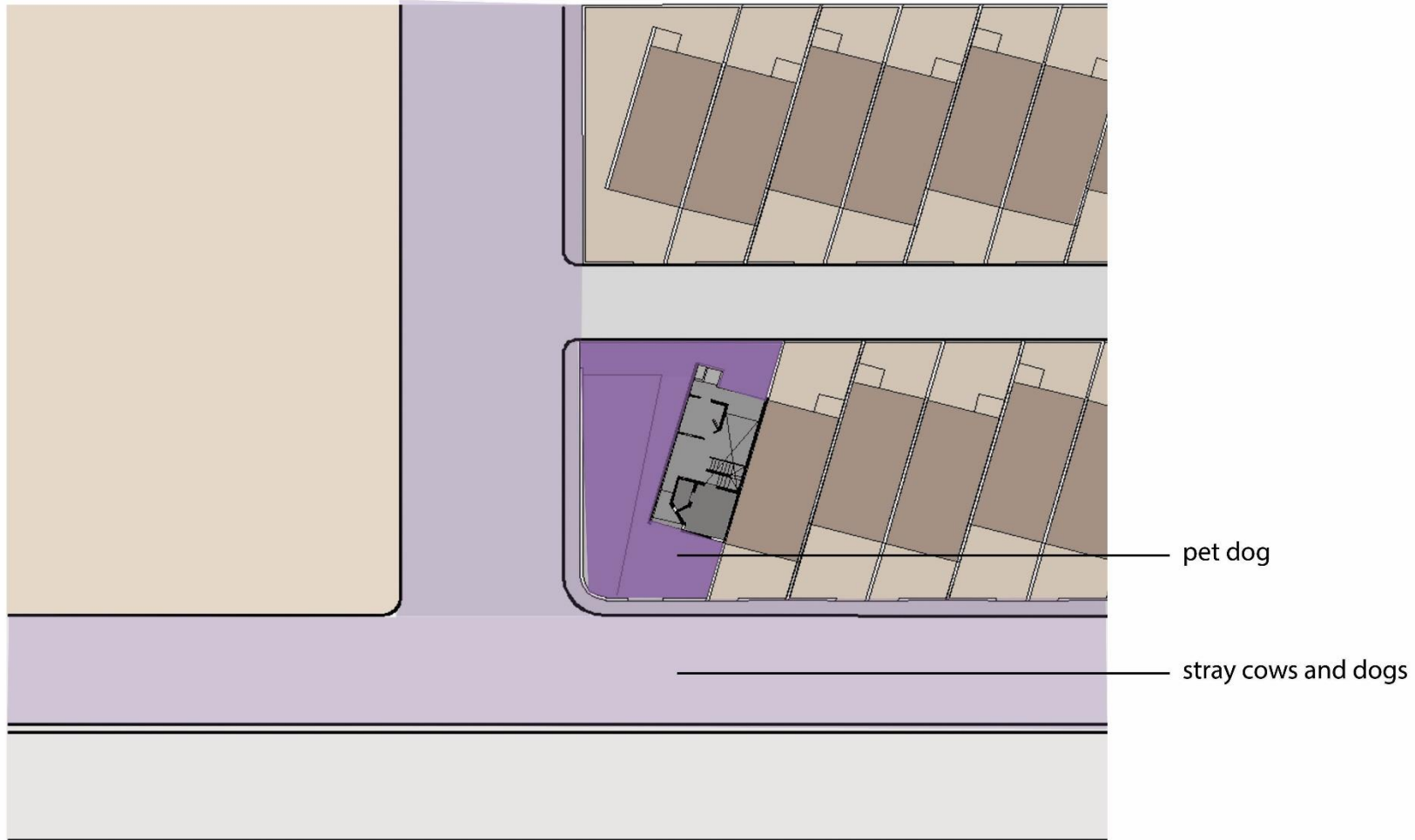


First Floor

More to less familiar animals

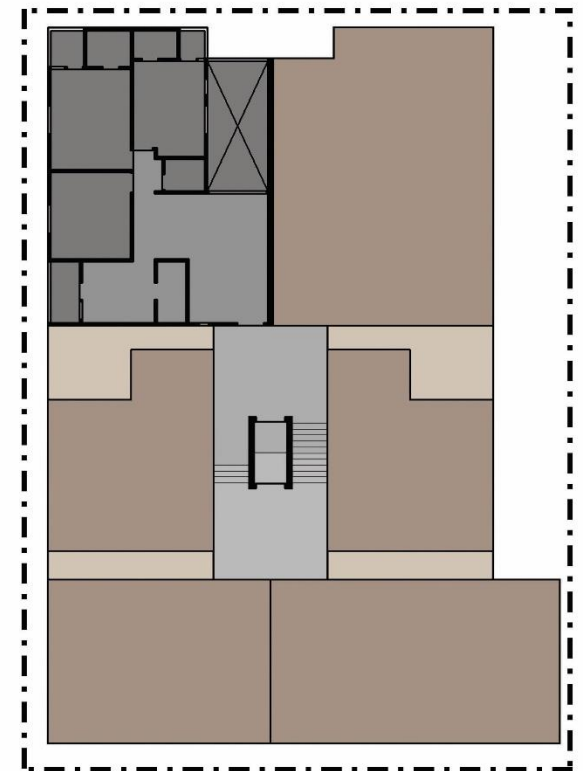
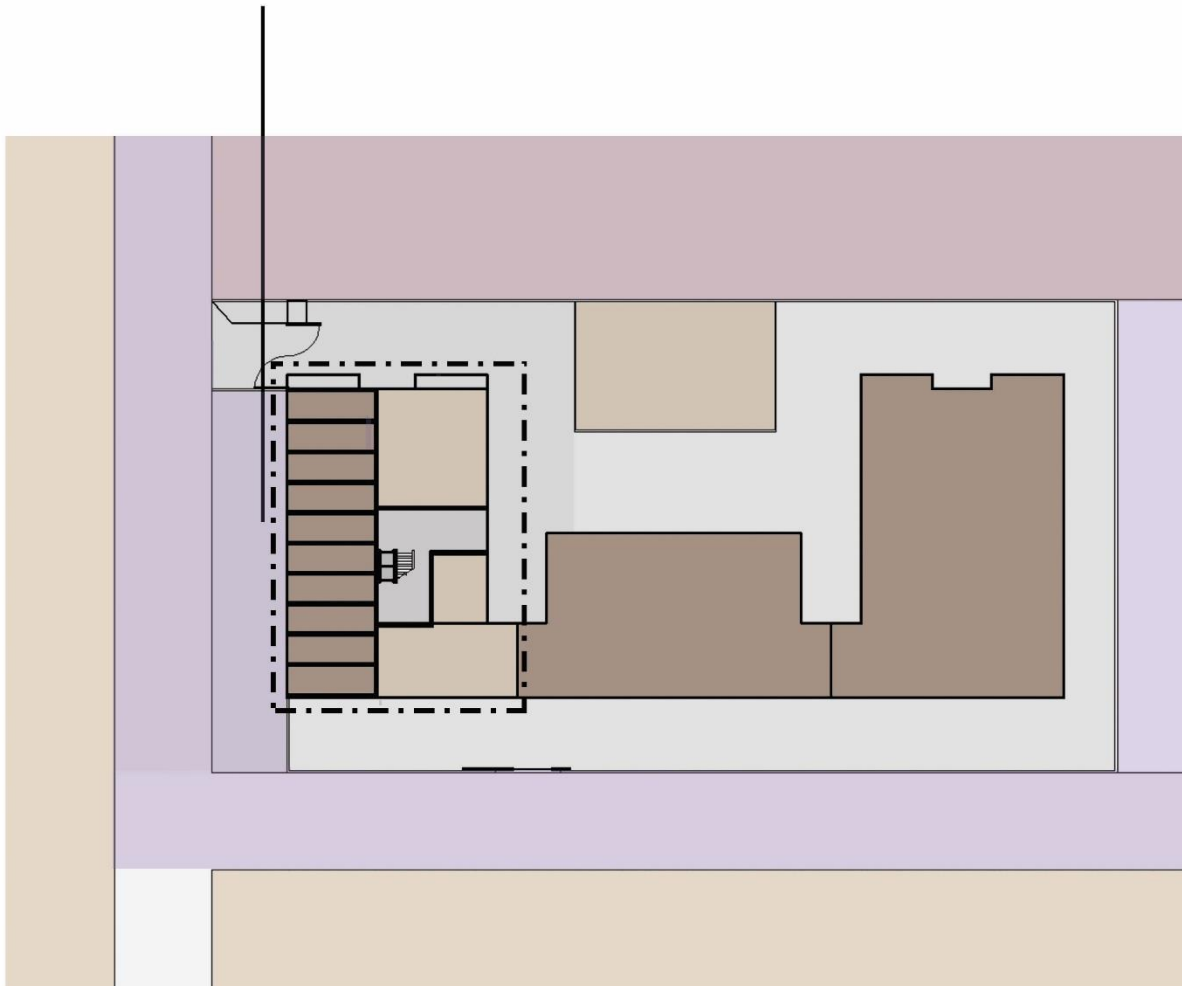


More to less familiar animals

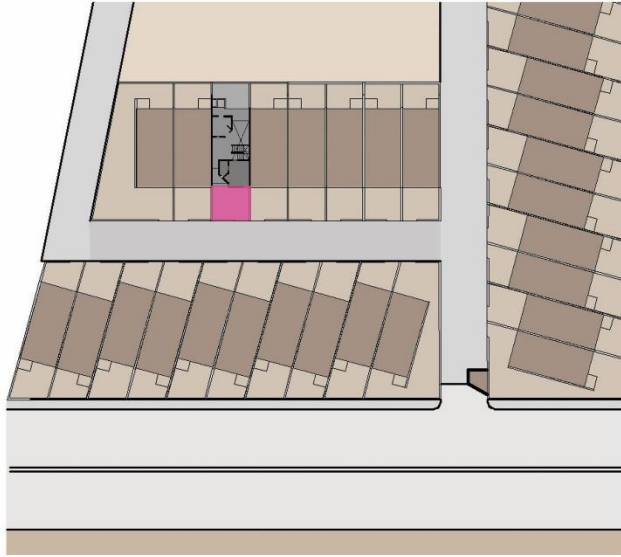


More to less familiar animals

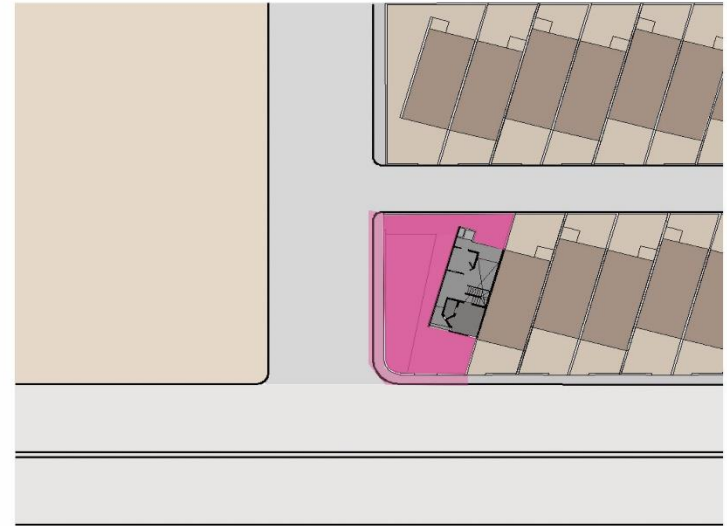
Dogs not allowed inside the gates.
4-5 dogs and stray cows outside



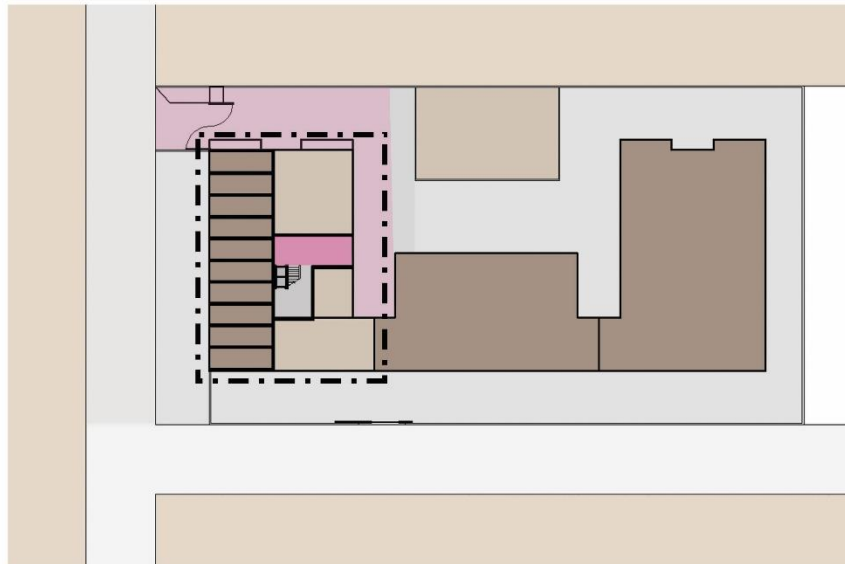
Where do you drop off your guests?



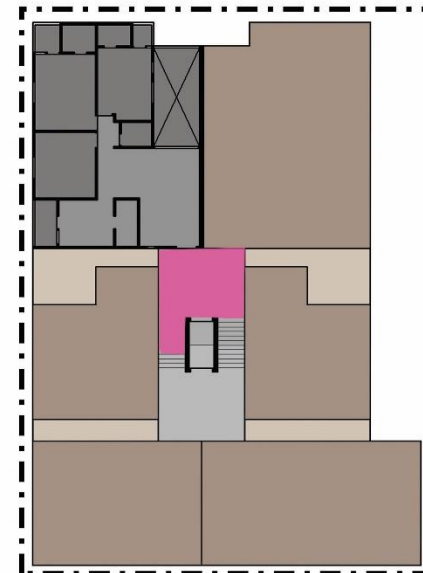
House 1 - row house - internal street



House 2 - row house - main road

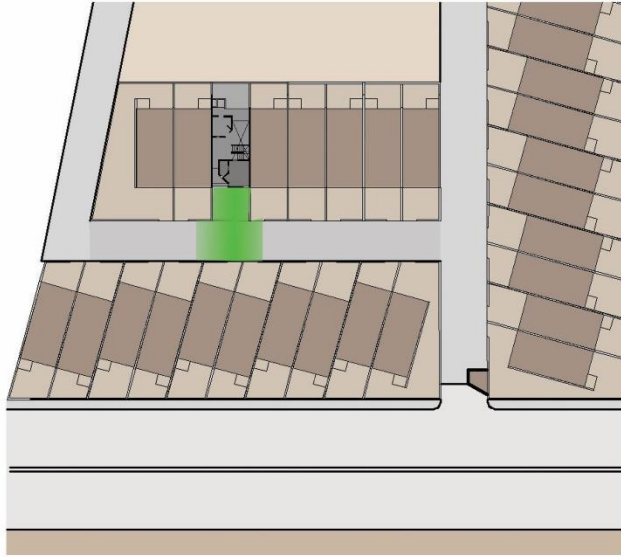


House 3 - apartments - first floor, with shops below



First Floor

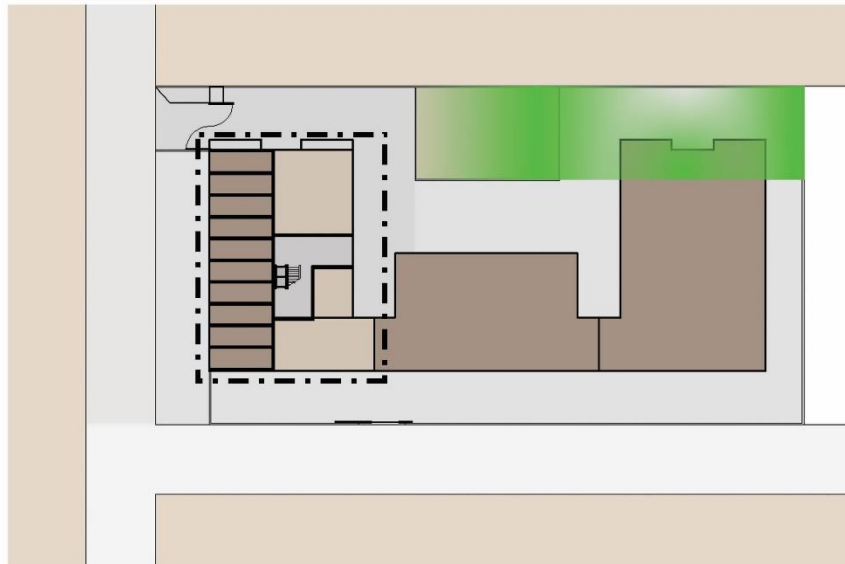
How much do you extend your house when there is occasion/festival/puja in your house?



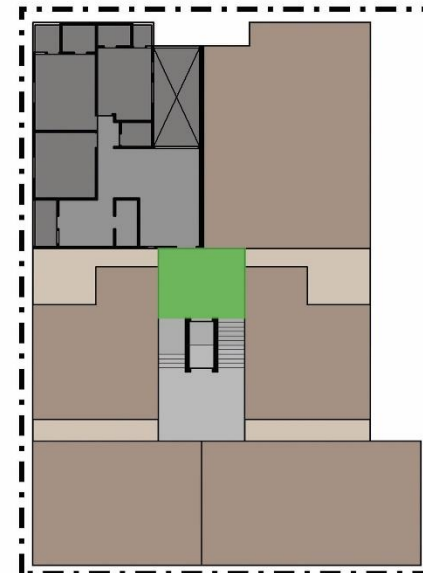
House 1 - row house - internal street



House 2 - row house - main road



House 3 - apartments - first floor, with shops below

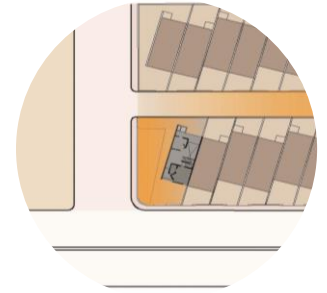
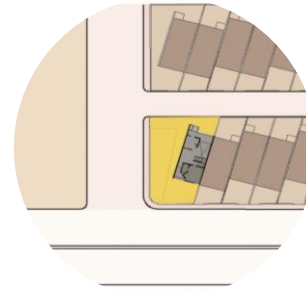
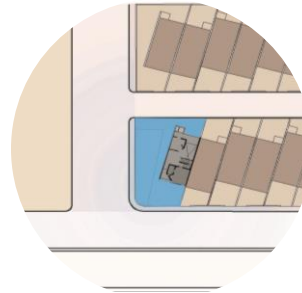
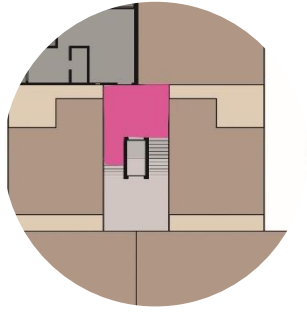
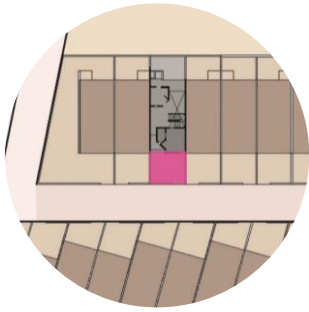


First Floor

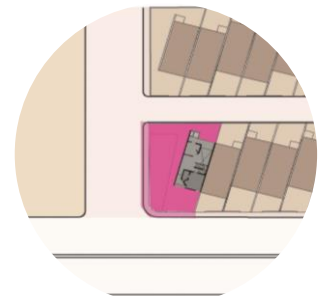
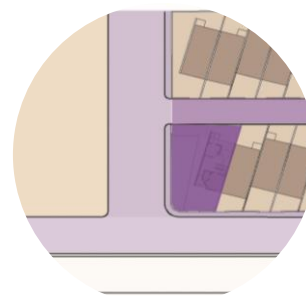
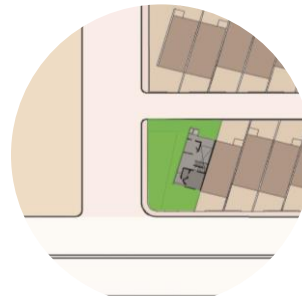
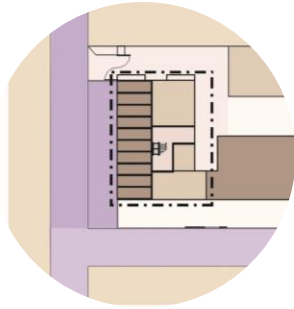
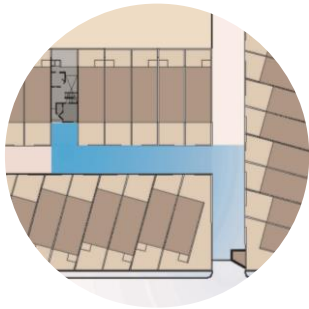
According to the answers, Boundaries mainly depend on these
three factors:

Physical Boundaries
Distance from the house
Visual Connection

1. Physical Boundaries – The boundaries created through gates/compound walls/ presence of security guard.



Activity of dropping off guests is directly connected to Physical boundaries like gates and pavement.

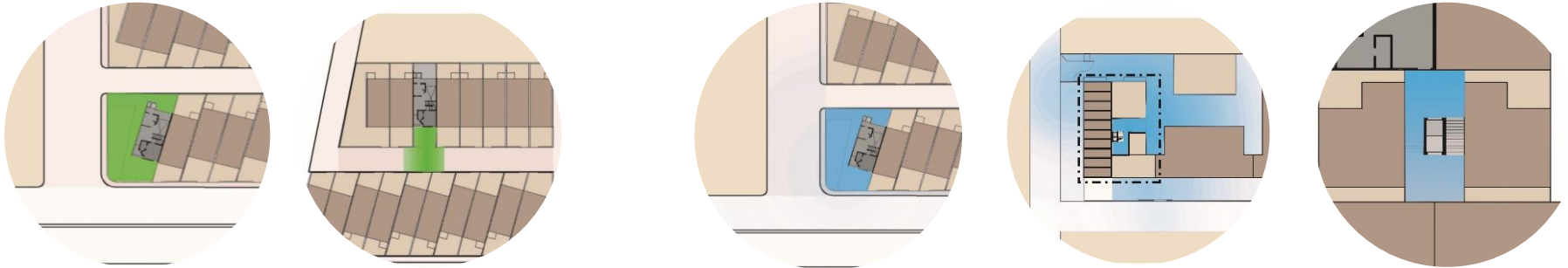


The notion of safety depends on the presence of gates or security guards.

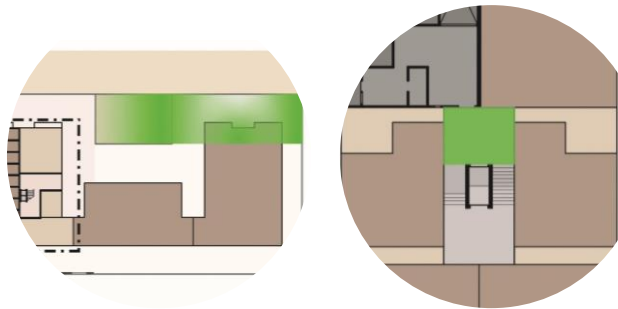
In the case where the entry of animals are controlled, gates and compound walls create the strong boundary.

In the case of house on the roadside, most of the boundaries are created through the compound wall because of less thresholds. The wall creates a strong boundary between inside/outside.

2. Distance from the house- The boundaries that depend on distance or proximity from the house.



Safety is directly related to familiarity of the place. One starts to feel safe as the distance from the house decreases and familiarity of the neighbourhood increases.



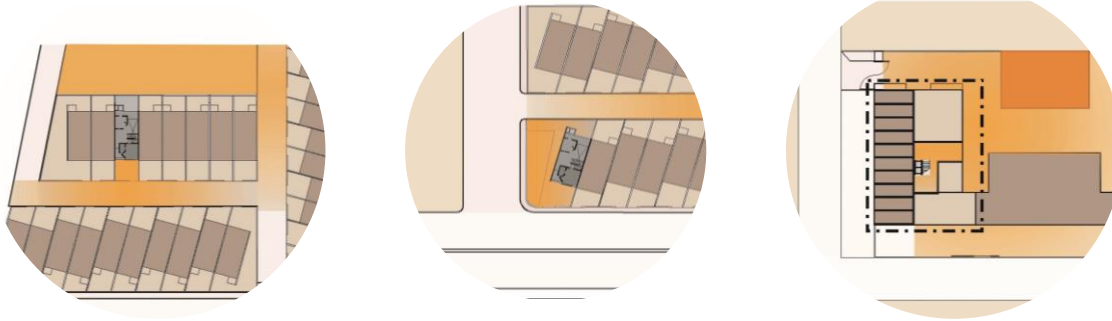
During an occasion, the house expands depending upon the proximity. In the case of apartment where the space can't cater to more people, the occasion is shifted to bigger community spaces.



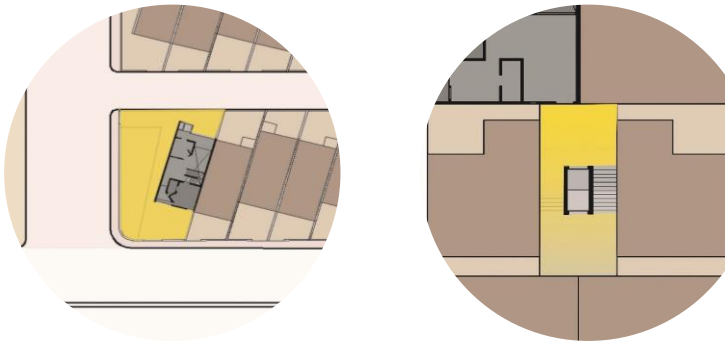
The familiarity with the animals of the area depends on the distance from the house as the animals have their strong boundaries.

The boundaries of going out in house-clothes or footwear are created according to proximity to the house and how much one has to walk.

3. Visual Connection– The boundaries created through the visual connection and proximity.



Keeping an eye while kids are playing alone is the most usual way of confirming their safety. In most of the cases, kids are allowed to play in areas with visual connection from the house. The area expands as the kids grow old.



Being able to be seen from the house and being able to see the house create the boundary of wearing house-clothes outside the house.

We, the architects, can design the physical boundaries
but can we design the psychological boundaries?