



SITE AREA: **6500sq.m.**

F.S.I: **4**

BUILT UP AREA: **26000sq.m.**

MARGINS: **N-3m, E-6m, S-7.5m, E-6m**

MAXIMUM PERMISSIBLE HEIGHT: **45m**

COMMON PLOT AREA: **650 sq.m**

PARKING: **7800 sq.m.** (3900 for cars)

COMMON PLOT AREA: **6500sq.m.**



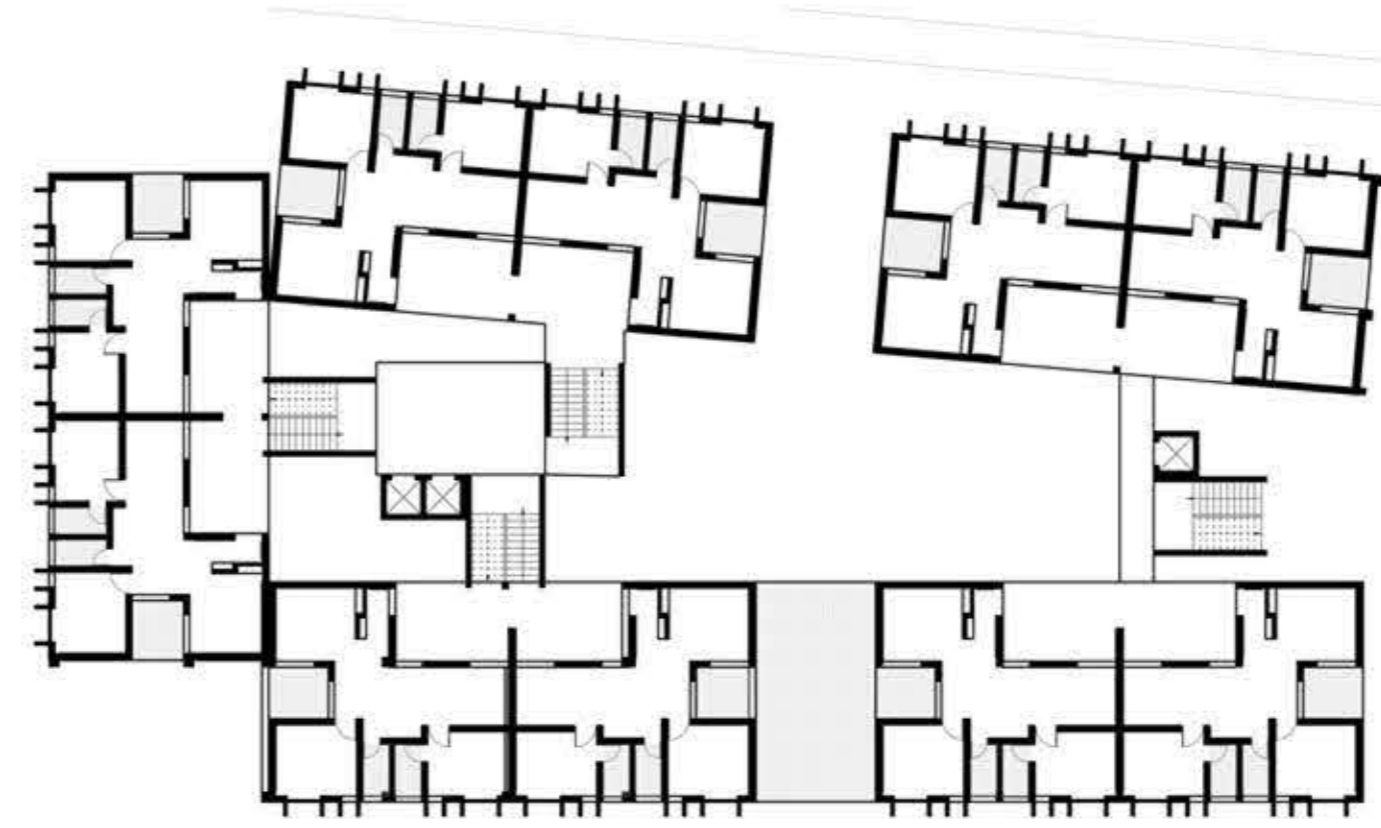
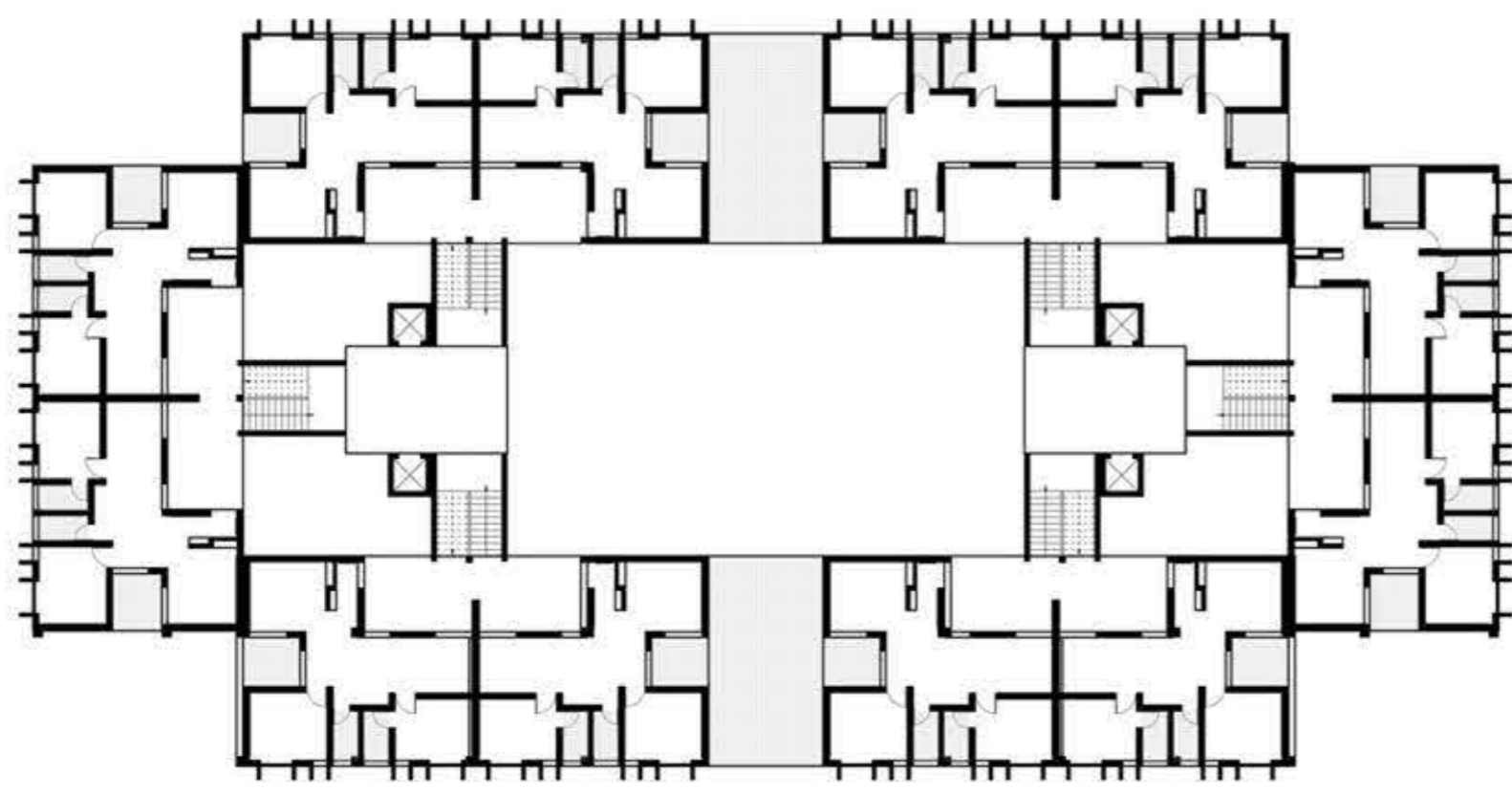
maximum preferred walking zone (beyond this is preferable by vehicle)



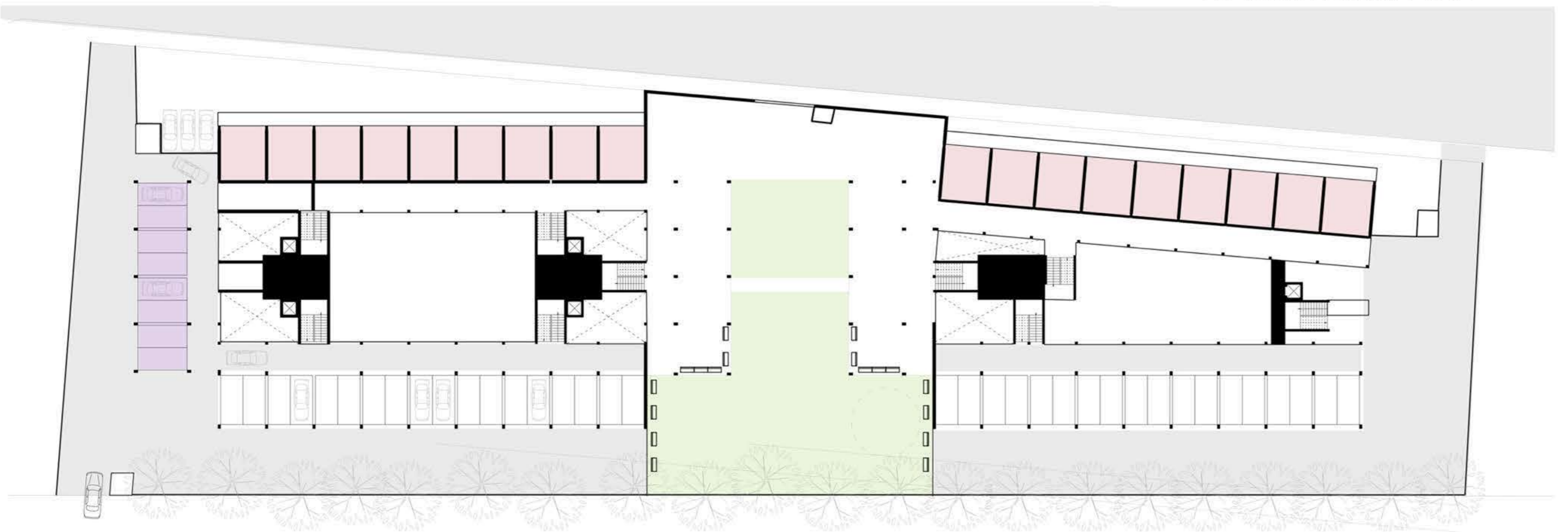
**threshold 3:**  
-point beyond which probability of meeting strangers increase.

**threshold 3:**  
-probability of meeting known people reduces drastically.  
-point beyond which crossing road is not desirable on a daily basis.

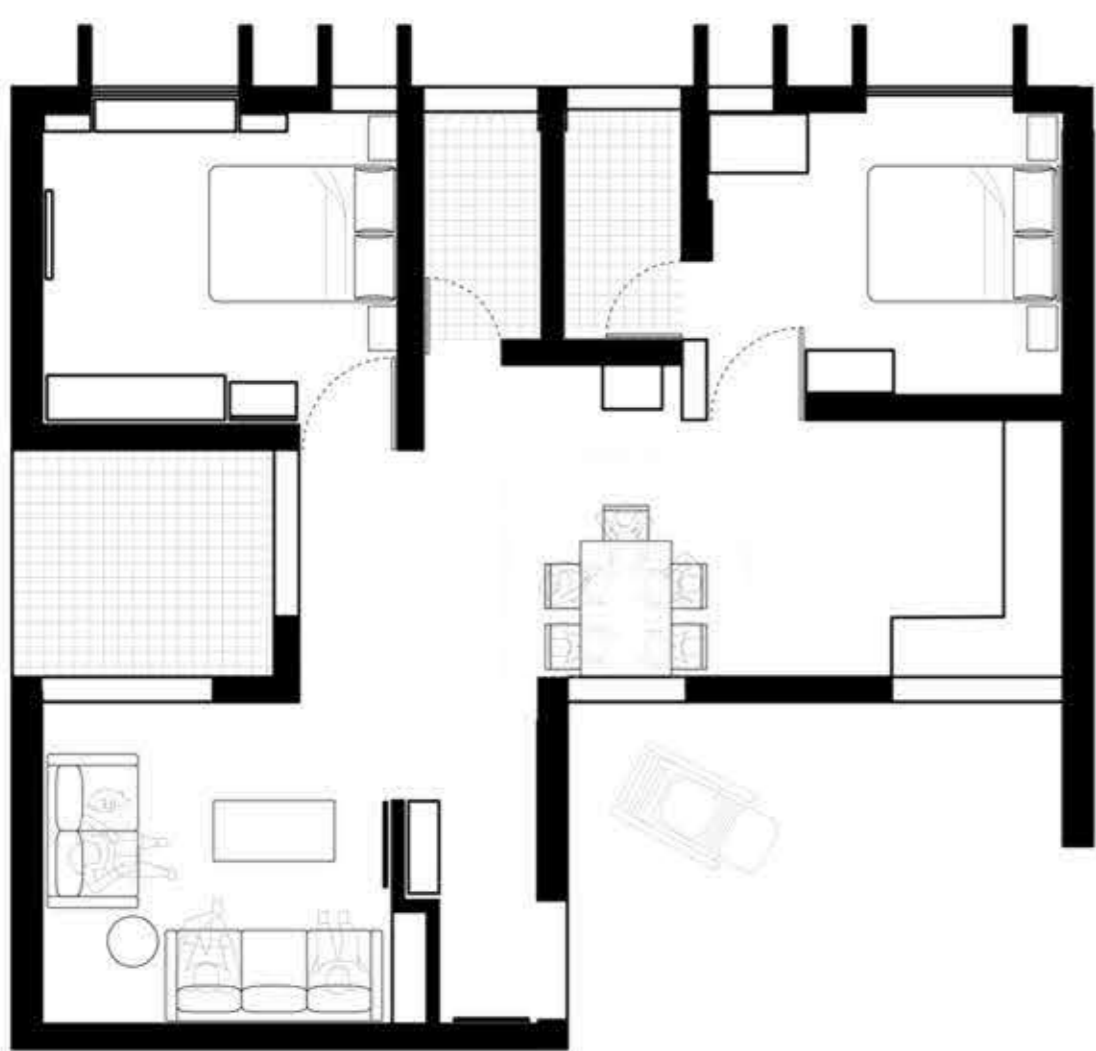
**threshold 4:**  
-Public road. Level of alertness to heavy traffic is high. Only possible need here can be to access BRTS bus stand.



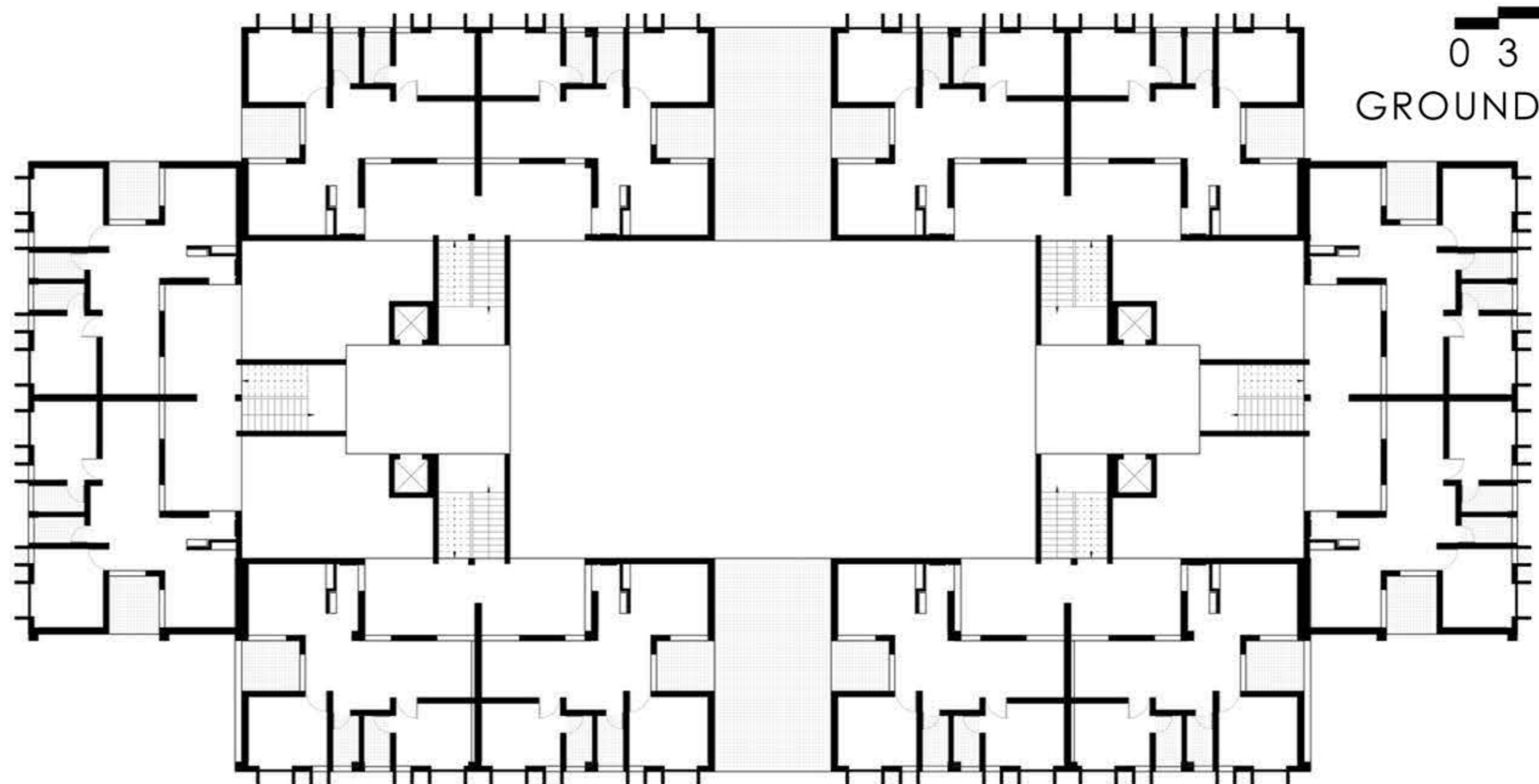
0 3 6 15  
TYPICAL FLOOR PLAN



0 3 6 15  
GROUND FLOOR PLAN



0 1 2 5  
TYPICAL UNIT PLAN



0 3 6 15  
BLOCK PLAN

