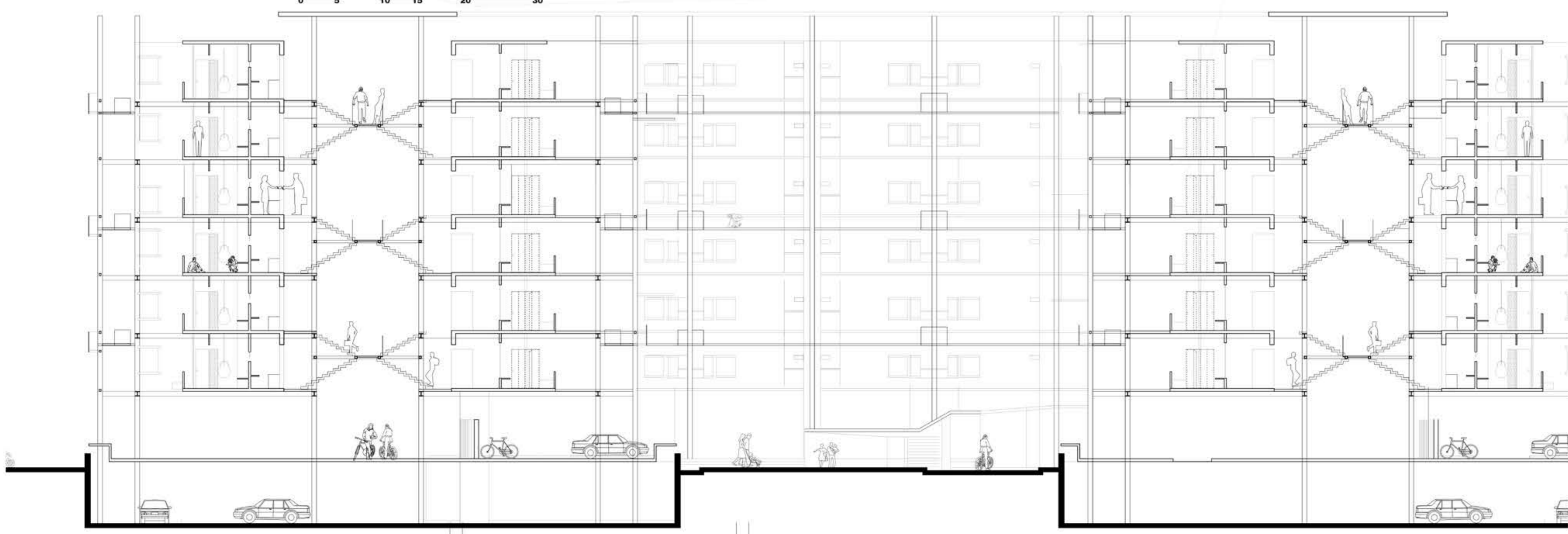
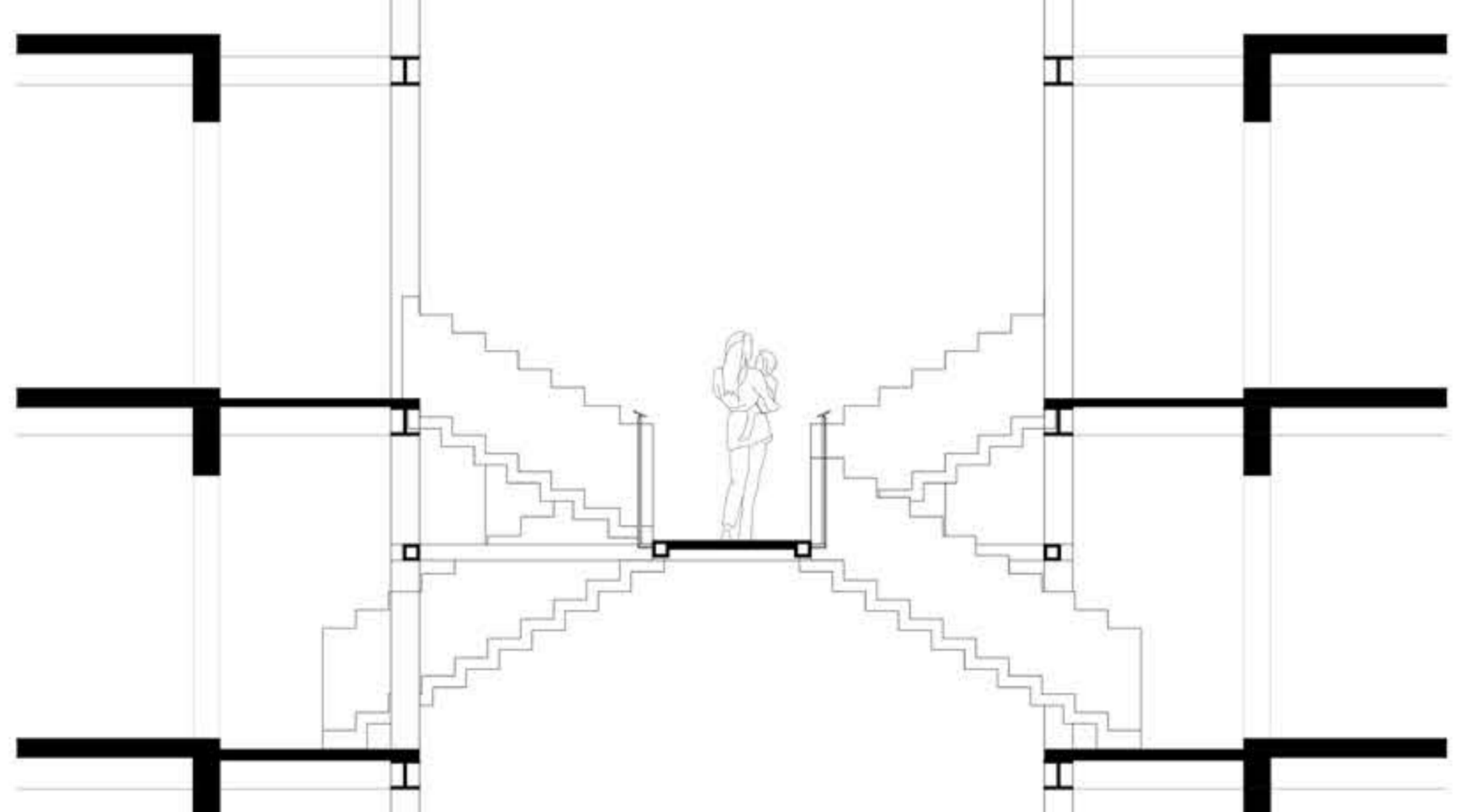




TYPICAL FLOOR PLAN
G+6



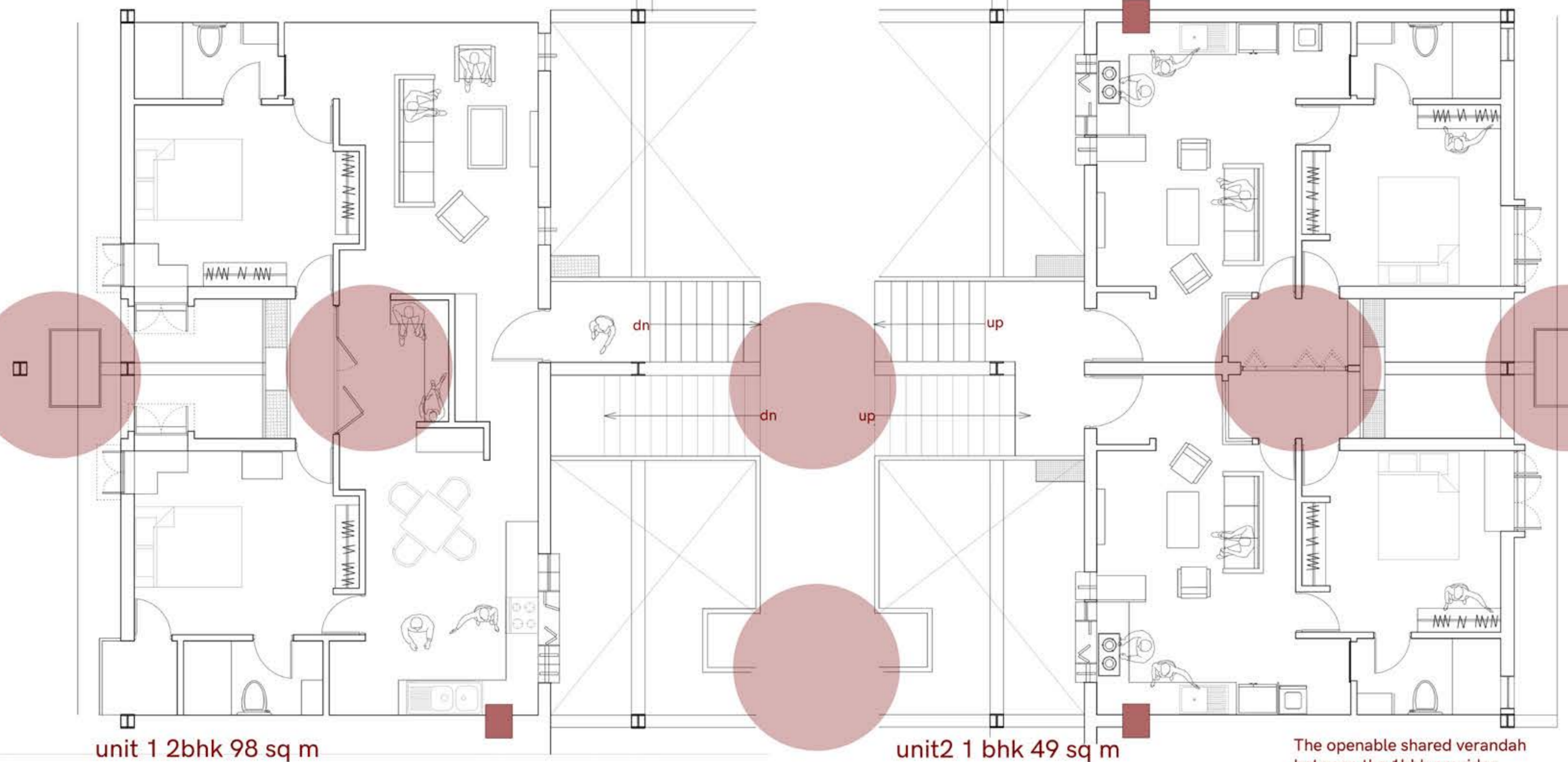
SECTION AA'



The railing is at an offset making the corridor seem wider

The shared junction between 8 units.

The box is shared between all units, it acts like an adjustable shared appliance storage box. Appliances like juicer microwave can be shared between two units.



unit 1 2bhk 98 sq m

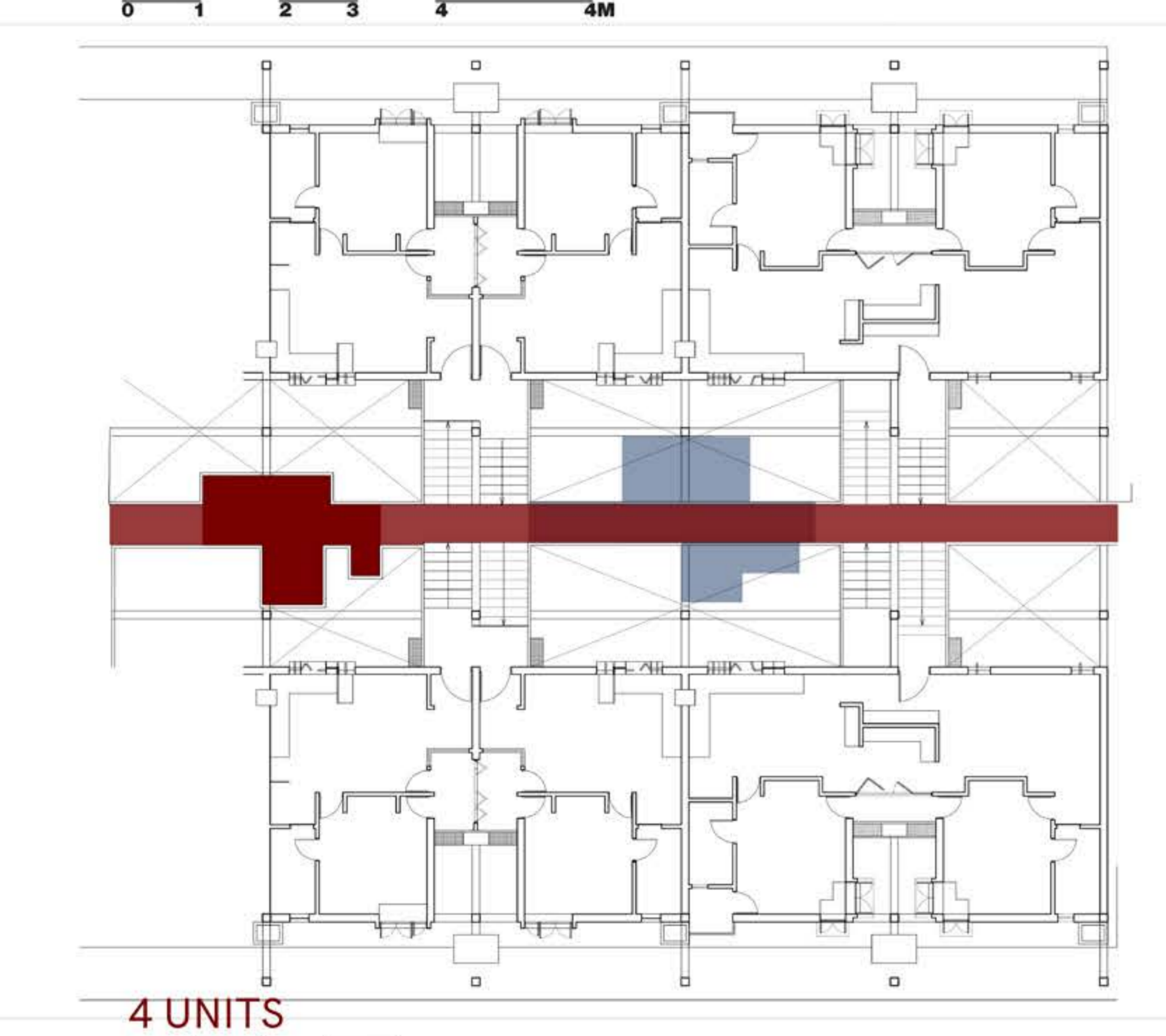
unit 2 1 bhk 49 sq m

The operable shared verandah between the 1bhk provides extended usable space through co-owning.



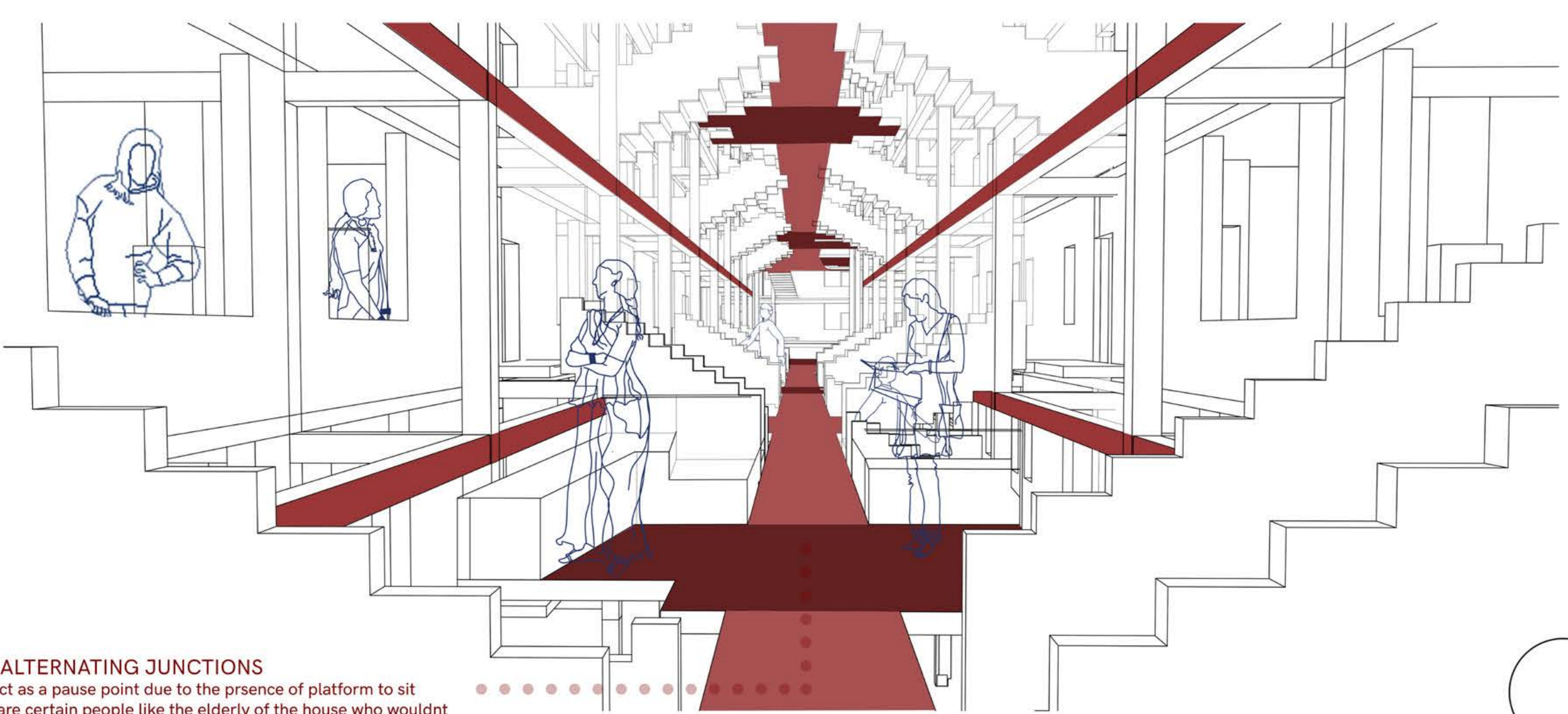
THE VERTICAL GARDEN

The planters present on the external area in layers enter the unit through its cut out that is present in both 2&1 bhk. the operable partition between the 1bhk & extended verandah/extended inner area in th 2bhk opens towards the creepers, flowers, some tomatoes. As the green enters the U occupants are directly in relation with it. The kind of plantation determines the interest between the units and the whole block. The containers can be changed and adjusted as they are just add ons and the planters are taken care of from the outside belt that are 3 of them, the alternate presence leaves the ambiguity of who owns the tomatoes. The layers helps in determining what is more towards private ownership.



The "bridge" corridor landings for 4 units of 2 floor shared, the nodes present after 2 units with different configuration creates a visual connection between nodes at all 3 levels.

4 UNITS

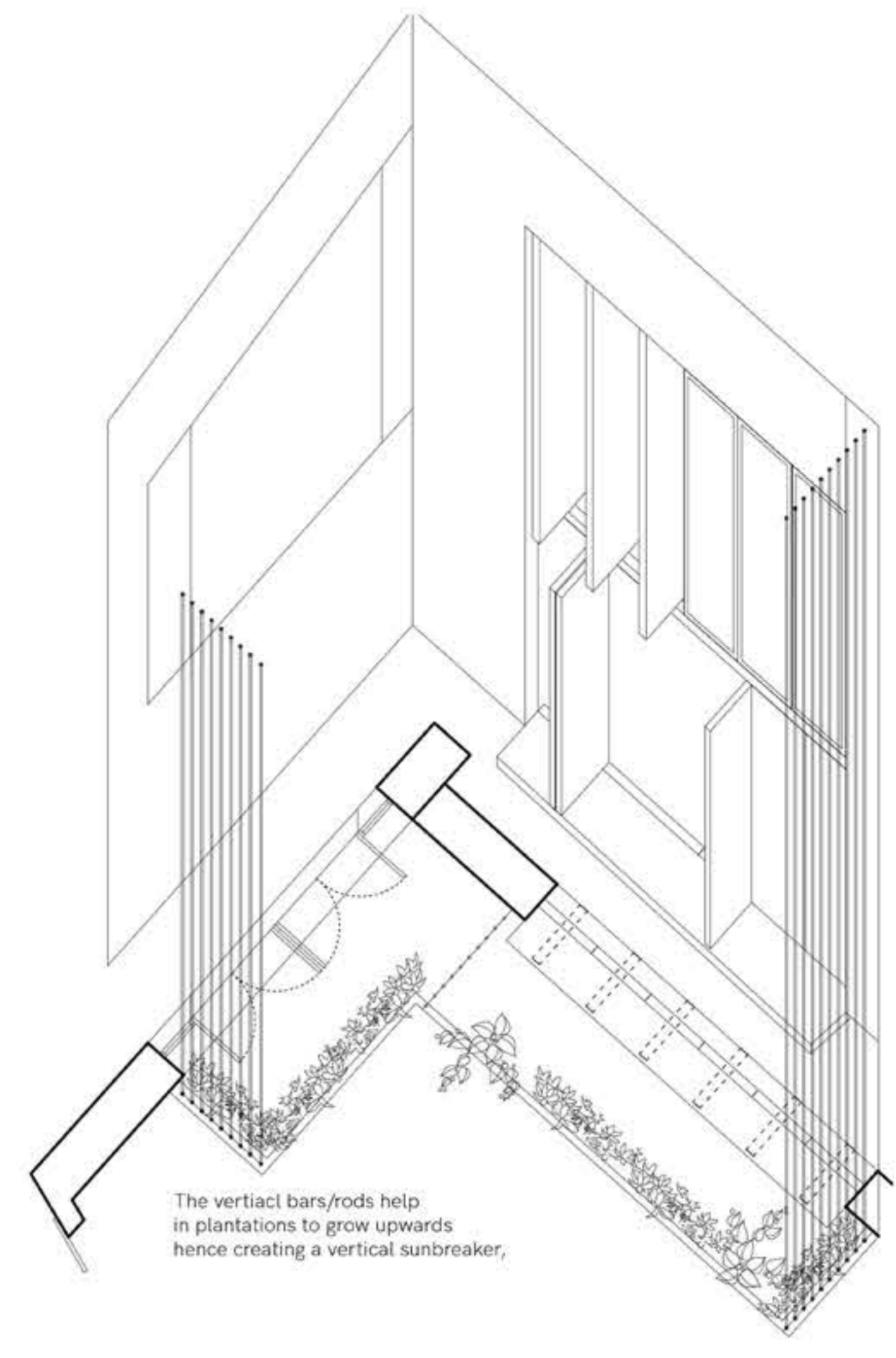


THE ALTERNATING JUNCTIONS they act as a pause point due to the presence of platform to sit there are certain people like the elderly of the house who wouldn't want to leave the house but wouldn't want to stay in either, this junction gives them a possibility to always look at the door of the house while being at a place where 8 other units can share

SITE : MEMNAGAR, AHMEDABAD

REDESIGNING FACADE FROM TIME

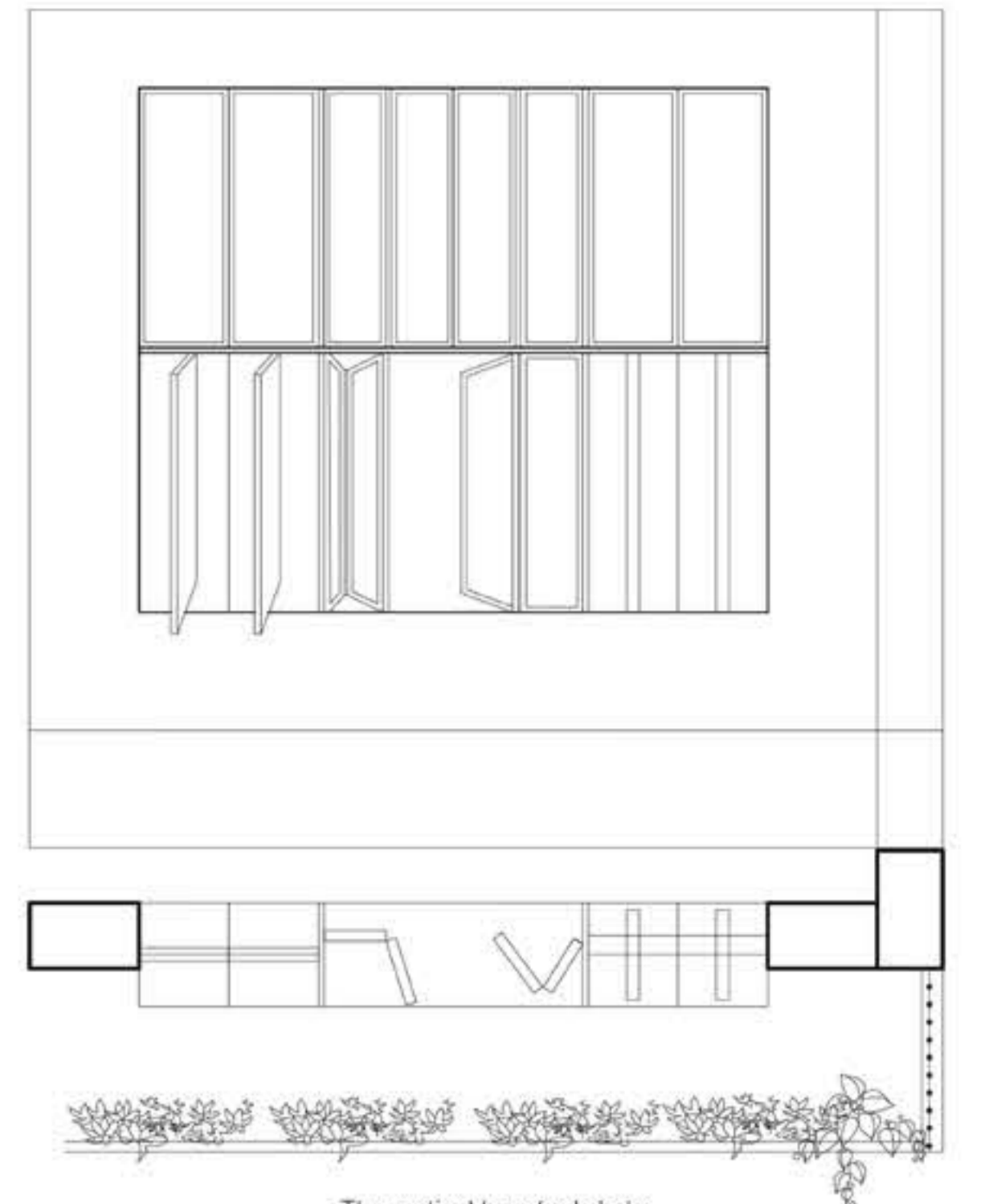
PROBLEM 5:



The two kinds of openings in the bed room allows the user to have different amount and kind of light as per their need in side the room. The lower half fully opens up so as to have a clean view

The vertical bars/hods help in plantations to grow upwards hence creating a vertical sunshades.

The two kinds of openings in the living room allows the user to have different amount and kind of light as per their need in side the room. The centre part of the lower half fully opens up so as to have a clean view, and the rest can be adjusted accordingly

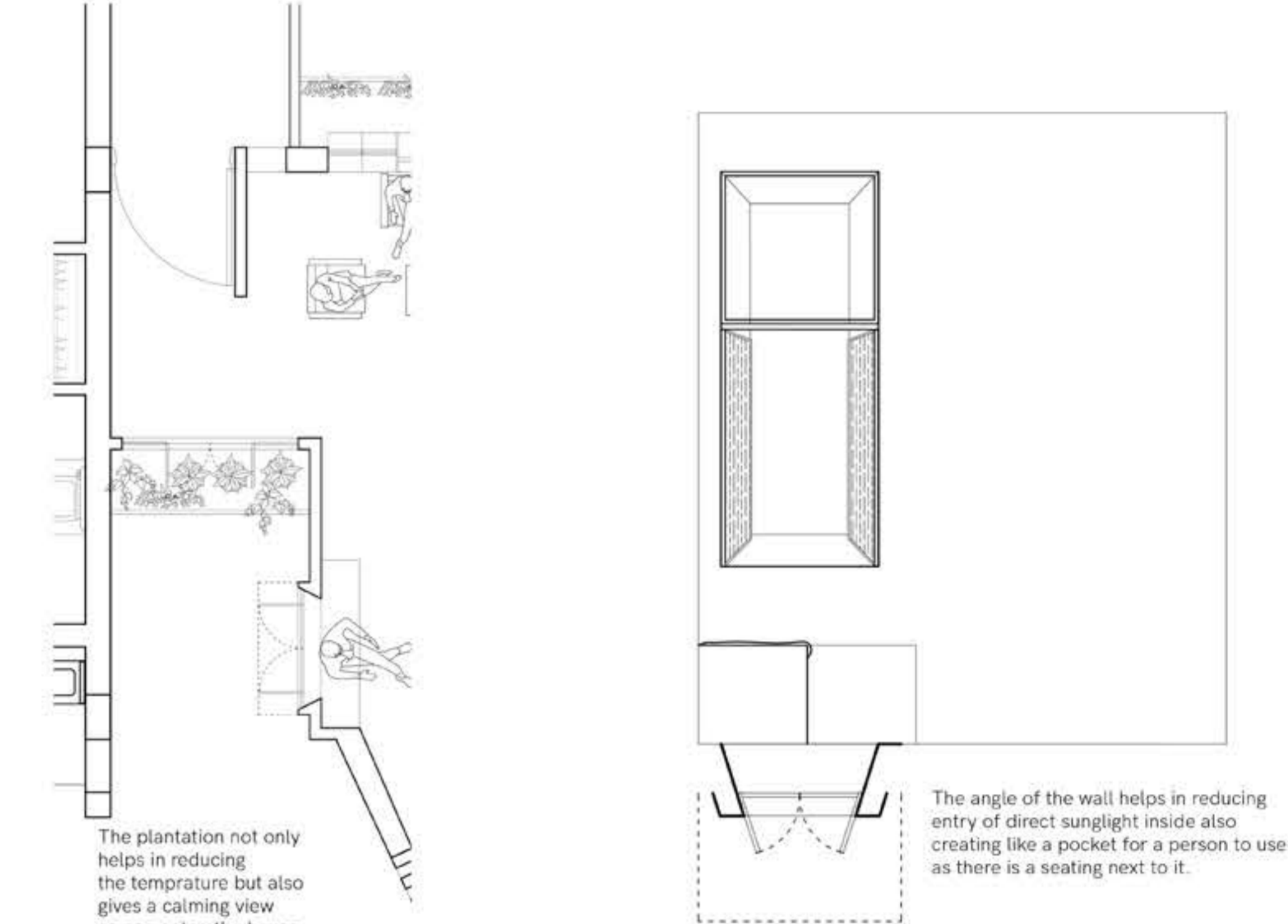


The vertical bars/hods help in plantations to grow upwards hence creating a vertical sunshades.

The slightly angled wall helps in creating a more private balcony as this block faces the entrance from two wheeler parking, blocks direct sunlight as this is the west side of the plot and adds a uniformity to the facade

The two platforms are provided for the AC outlets

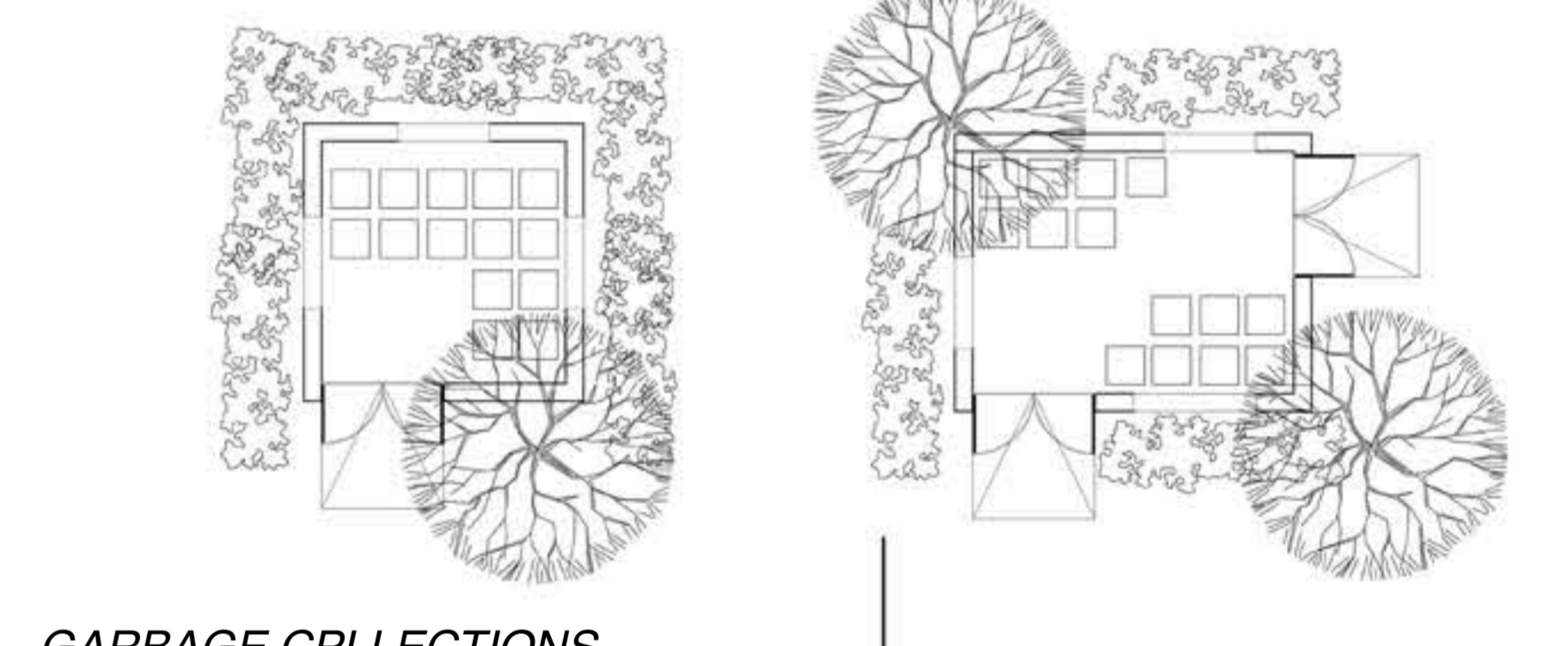
The window sill being on the edge provides more space for the kids to sit, or the occupant to decorate or use it accordingly.



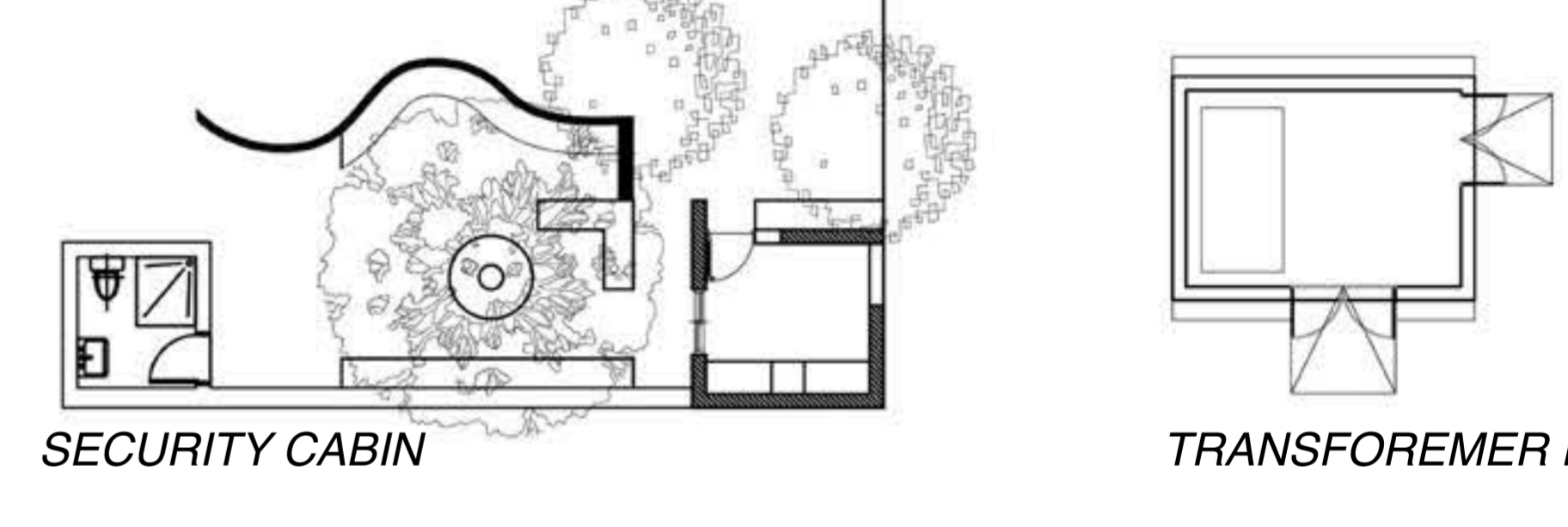
The planter not only helps in reducing the temperature but also gives a calming view as one enters the house.

The angle of the wall helps in reducing entry of direct sunlight. Hence also creating like a pocket for a person to use as there is a seating next to it.

TIME PROBLEM PREPARATIONS:

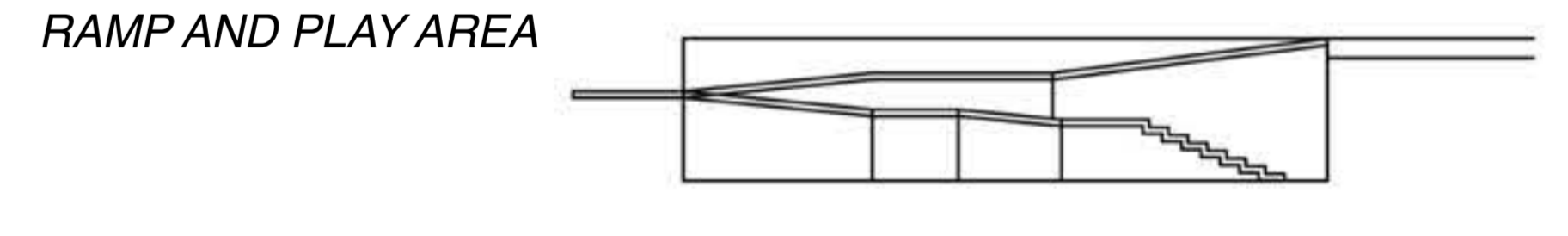


GARBAGE COLLECTIONS

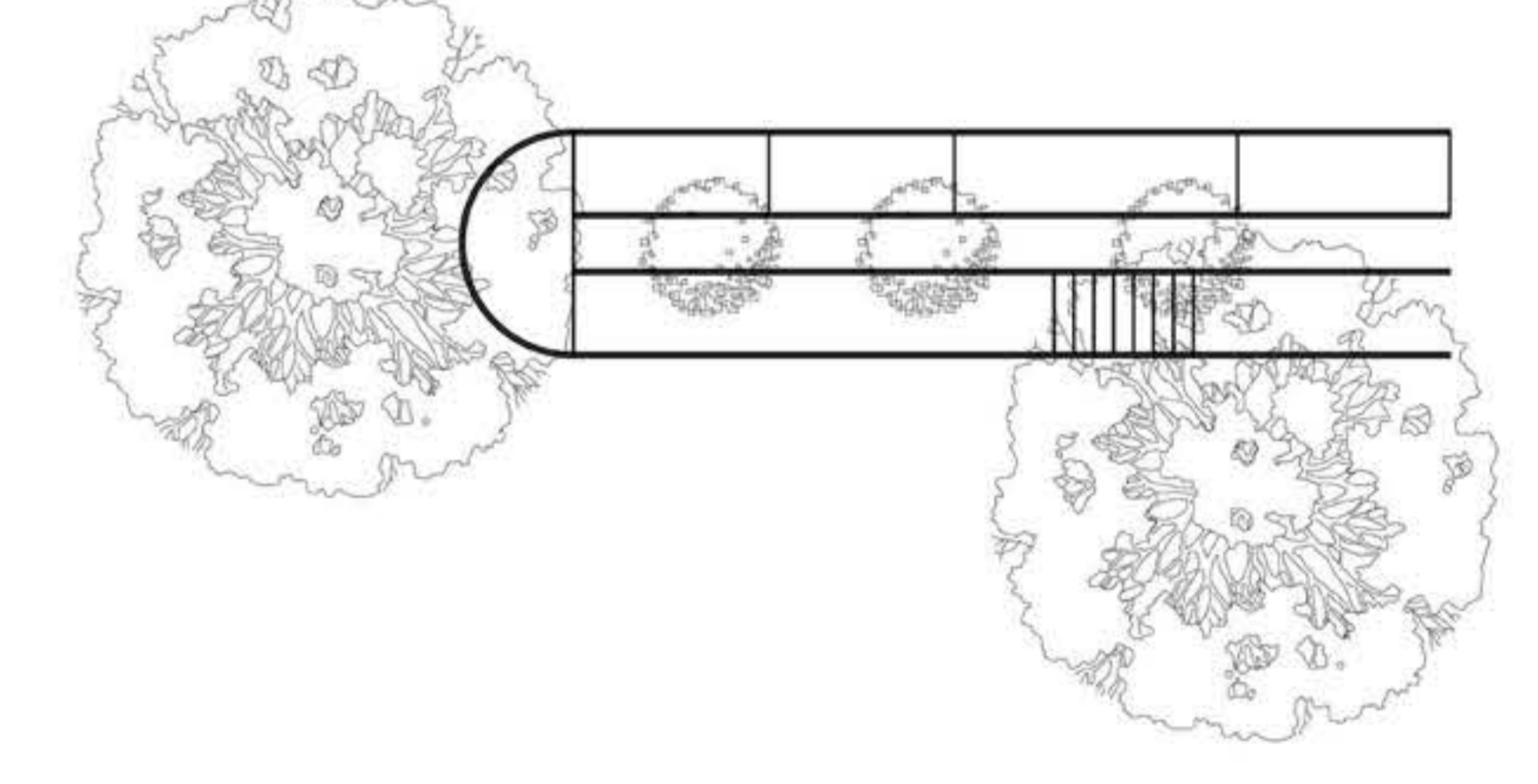


SECURITY CABIN

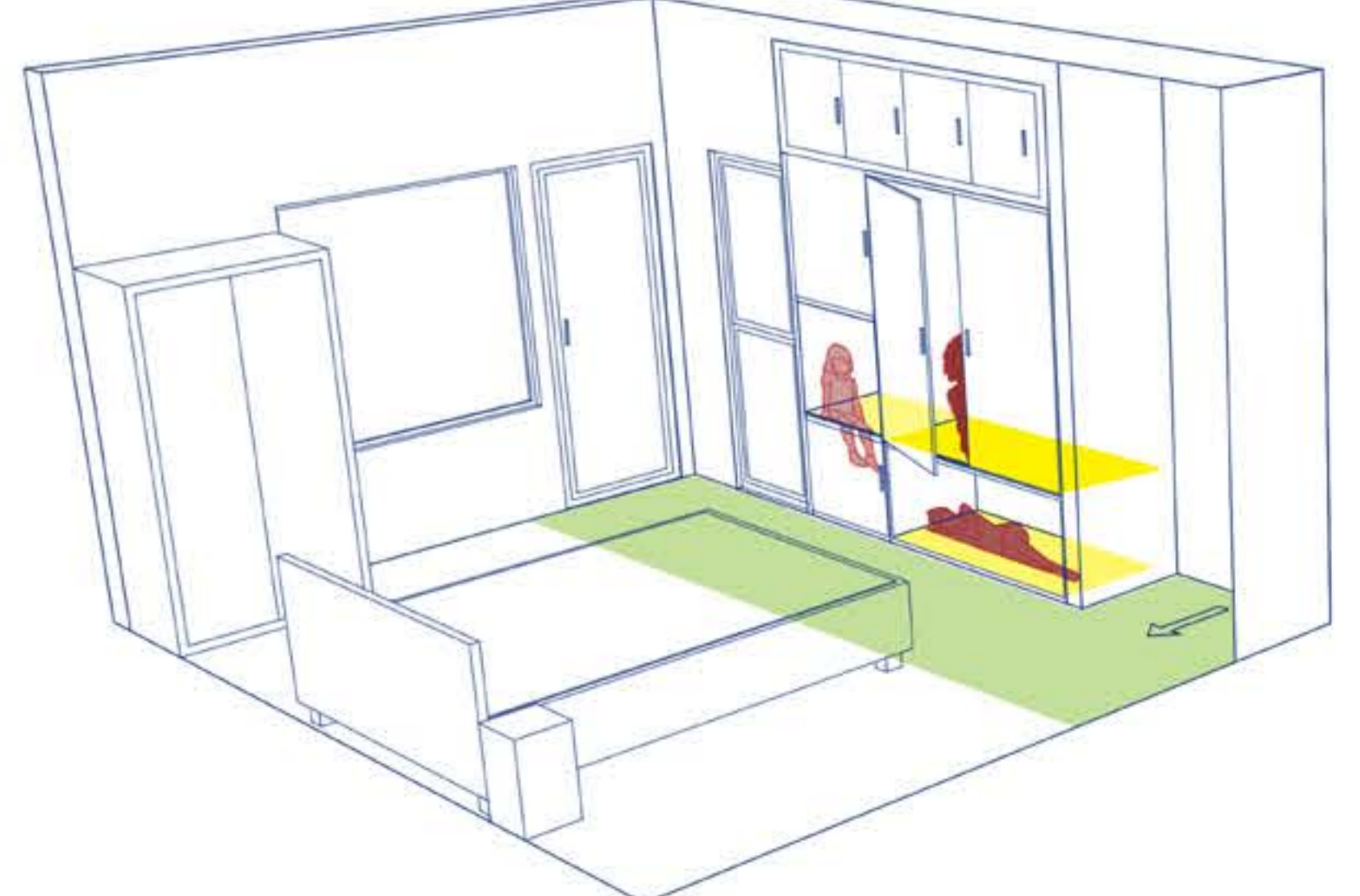
TRANSFORMER ROOM



RAMP AND PLAY AREA



MEMORIES OF HOME:



Dimension of furniture and arrangement effecting their usage.

