

HOME

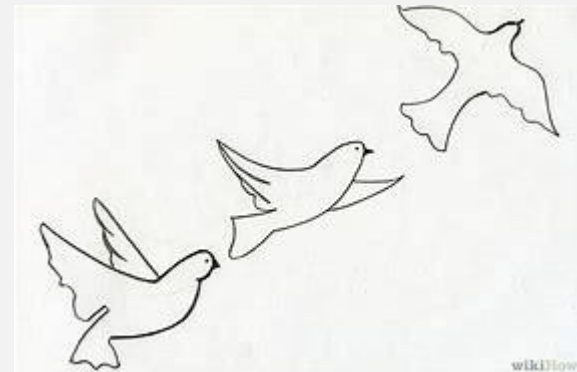
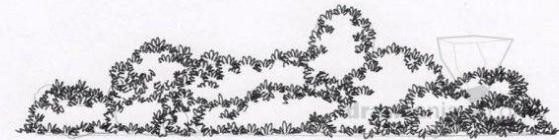
Values v/s architecture

SILENT CLIENTS OF DESIGN

- Dog/cat
- The birds
- baby
- Earth
- Sun
- Trees and shrubs
- The air



everman 2011



wikiHow

HOME CULTURE

- Where are we going?
- Is there Otlo /angan + sun (activity example)?
- Values?? Modern(cool)??but why??for recognition?? Why??
- work??
- Cigarette/ alcohol/ multipartner /red light area

HOME

- Solution might be factory reset the brain
- Brain.
- Everything starts with it.
- How to restore values of human being through architecture. Is it possible?
- Do you know what happens to that one person in the village of “Mads”?
- Is there a way to show people how they should live.
- For ex. Auroville its belief?

SENSE OF HOME

- Polo forest
- Vernacular architecture
- Data of government record pdf.
- Standardization v/s profit
- Where's people in the design decision?

People's choice in housing.

A ☐

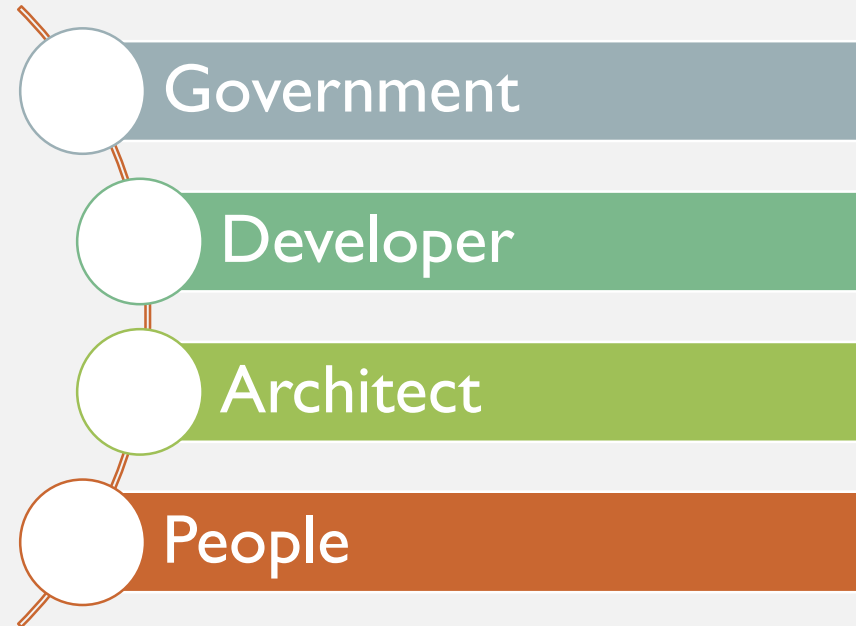
B ☐

C ☐

- They have no any choice of D.
- What's D???

SYSTEM AND AUTHORITY IN HOUSING

- What are we doing?
- Are we really making home for people?
- How people want live?
- And what happens when we do as people wants?
- What is the right way of living? Who'll decide it?
- How can people convince government?



VERNACULAR HOUSES IN ARCHITECTURE

- Mud houses
- Stone flooring
- Simple life
- Living for a day.
- Working for living healthy and to contribute in society.
- How should they think?
- How should be happy?
- People has to learn to feel “it’s enough for me, I don’t need more”
- It’s all about balance in nature. We cant just abundant bad things.
- Quality life.

HOW CAN WE CONTRIBUTE TO GET BALANCE IN NATURE?

- My role as an architect

Bluntly I would say don't keep migrating in metro city instead be in your home town. You have much life there.

- They don't want to live in joint family for the sack of their freedom
- They want money and recognition in the society. Which society? Society at your home town? From which you come so far away. Does they really care? At what cost you are able to achieve that recognition. It is worth it?

CONSEQUENCES OF PEOPLE'S FREEDOM

- Revolution/ movement
- Modernity history examples

AT LEAST I CAN DO

- To bring flexibility in people's life by making their space flexible by using ***movable walls***.
- Movable walls for flexible architecture plan as home starts with the house.
- The took community living for granted until we live far from home town. We don't just miss own home but all the places where you went or play.
- Sensitive approach
- Careful soft touch to someone's home.
- Already sensitive matter.
- Someone's home.

MOVABLE WALLS

INTRODUCTION

The rapid urbanization has taken place due to the industrialization. New techniques of production of mass houses can be found in constructions and emphasizing on simplifying the form can be seen. Then the idea of home transformed into the efficiency of space.

I believe the group of amenities doesn't provide the experience but certain arrangement does and the utility of space can be enhanced by using movable walls but for some reasons it's not working out in India.

FACTORS AFFECTING TO THE DECISION MAKING:

Assumption:

- High Cost
- High maintenance requirement
- People belief system which affects to probability of space to merge
- The ratio of people who wanted flexibility vs not wanting is less.
- The fact in Indian culture is there will be always either guest or parents in the house will require privacy.



WHY INDIAN PEOPLE DON'T RECOMMENDS MOVABLE WALLS?

People's concerns

- High maintenance requirement
- High Cost
- Compromises privacy
- Security of space
- Less durability

Architect's concerns

- Managing new agency
- Cost of ready made walls can be cut down by making

INDIAN FAMILY REQUIREMENT FOR HOUSE OF 6 PEOPLE:

- Husband: watching match, get to gather with friends.
- Wife: kitchen, wash, privacy from guest and in laws, secure safe.
- Kids: secured privacy
- Old people: open space to look out the kids and reading newspaper/sitting.



FACTS OF SPACE USAGE IN FAMILY:

- There will be guest in the house or in laws in the house.
- The kitchen toilet and bedroom are the constant space except living room.
- 2 people family will require space for parties and get to gather or working from home.
- 4 people family will require space for making achar or papad or making yearly spices.
- 6 people family will use the space for kid's playing area.
- Each scale of family can use the extra space for their benefit.



FACTORS AFFECTING TO THE USAGE OF SPACE TIMINGS

- Guest
- Bad mood
- Fight
- Secret talk
- Privacy from certain people

- The research is conducted to know the factors affecting to the construction process and decision making to make movable walls in affordable housing.

To know the reasons behind it I've interviewed some practicing architects. I've structured some questions as shown below:

- ❖ Why people in India doesn't prefer to make movable walls?
- ❖ How will it affect to the construction process?
- ✓ At what stage it can be introduce?

The possible structure change can be the increased size of column

Will be produced in lesser time.

Will costly in compares to brick wall.

MATERIALS

- Wood
- PVC wall panels
- Wood
- Glass
- Aluminium

Rate

1 square feet brick wall is approximately **850/- rs**

1 square feet precast concrete wall is approximately **1500/- rs**

1 square feet PVC wall is approximately **60/- rs**

1 square feet PLYWOOD is approximately **1200/- rs**

QUESTIONS

WHY PEOPLE OF INDIA DON'T PREFER MOVABLE WALLS?

- **Vihar:** lack of knowledge and desire to have fixed spaces
- **sudarshan:** Lack of knowledge
- **Mehul Bhatt:** indian culture needs certain fixed spaces for example,
 - Kitchen
 - Bedroom
 - Storage area
- **Mauktik Trivedi:** it's costly because we have to buy it from international company and its costs us 3000 per square feet.

AT WHAT STAGE IT COMES IN THE CONSTRUCTION PROCESS?

- *Vihar*: after the masonry, plastering and flooring work subject to
 - Materials, design and installation systems
- *sudarshan*: after finishing masonry and at the time of door
 - window installation
- *Mehul Bhatt*: at the stage of finishes.
- *Mauktik Trivedi*: after plastering.

WHAT STRUCTURAL CHANGES IT BRINGS TO THE BUILDING?

- *Vihar*: it will be act as an partition wall and will not be load bearing wall
- *sudarshan*: it will be partition wall and it will not take any structural loads
- *Mehul Bhatt*: its partition walls only.
- *Mauktik Trivedi*: partition wall doesn't change structure system and will be used
in interior spaces as it's interior designer's concern.

FINDINGS:

- Considering its going to use in affordable housing, the people will not able to maintain it properly.
- The loads going to act in this system will both tension and compression but due to more horizontal movement it will require material high in tension and compressive strength.
- The weight of the wall should be take care.
- Installation stage: flooring stage depending on system.
- We have two problems:
 - If we take some light weight material for example pvc it will compromise its durability and Aluminum on other hand is unaesthetic and two time costly than wood.

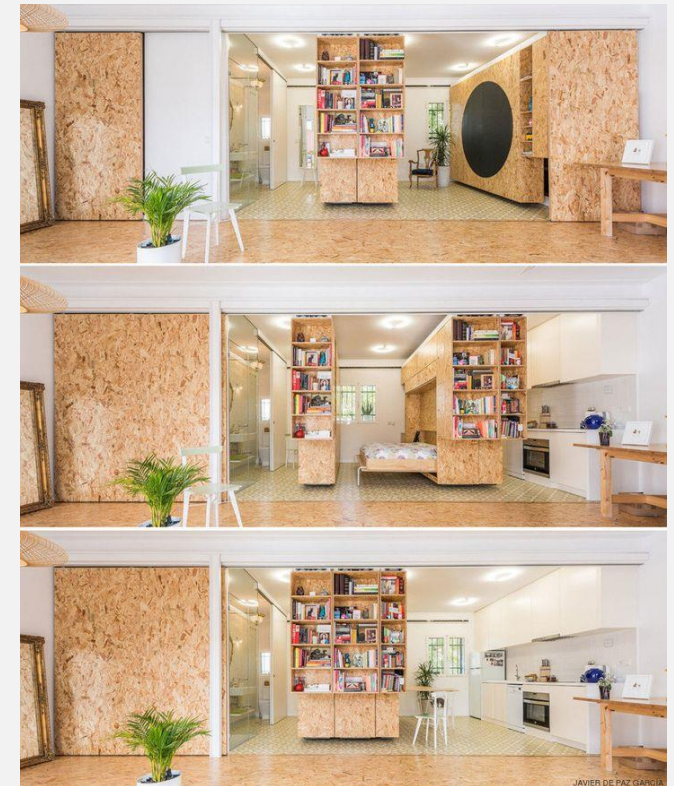
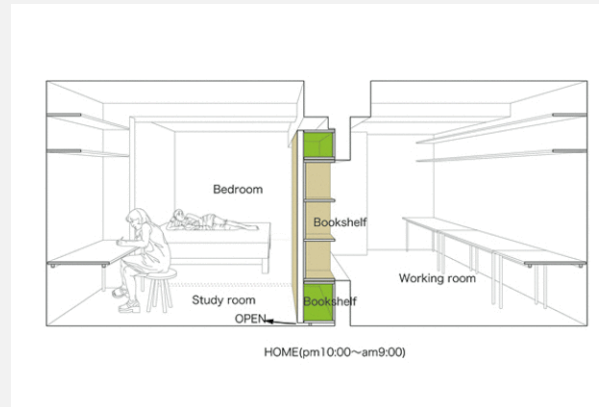
Indian culture doesn't allow much the flexibility in spaces.

FINDINGS:

- If we take concrete it will be heavy and won't take tensile loads.
- Thus the best option will be *wood* to make movable walls.
 - Durable
 - Less maintenance
- Constant spaces:
 - Toilet
 - Store
 - kitchen platform
 - locker

SPACES CAN BE COMBINED

- Living+dining: 1 BHK
- Living+ balcony: 1 bhk
- Bedroom+ living in 2 BHK
- Bed+balcony+living
- Dining+living:1/2 bhk



EXAMPLES





ADVANTAGES

The activities like,

- Making papad
- Making pickle
- Making food for big group of people.
- dance/yoga/ tuition classes
- Jamanvar on shraaddh like occasion
- Mehendi
- Sangit
- Birthday party
- Engagement party
- Baby sitting

