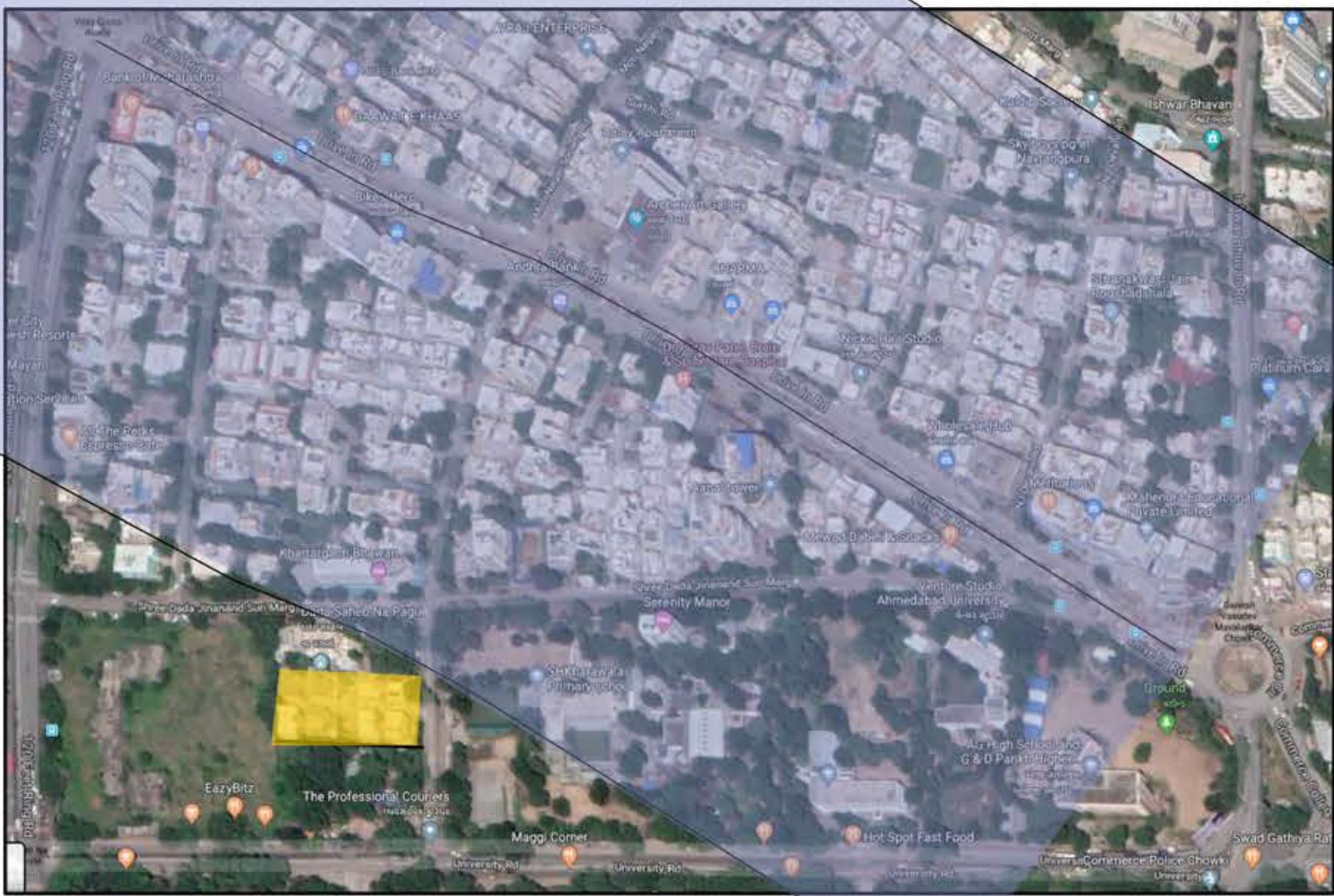


HOUSING PROPOSAL

DADA SAHEB NA PAGLA SCHEME

Metro line coverage patch
F.S.I. 4

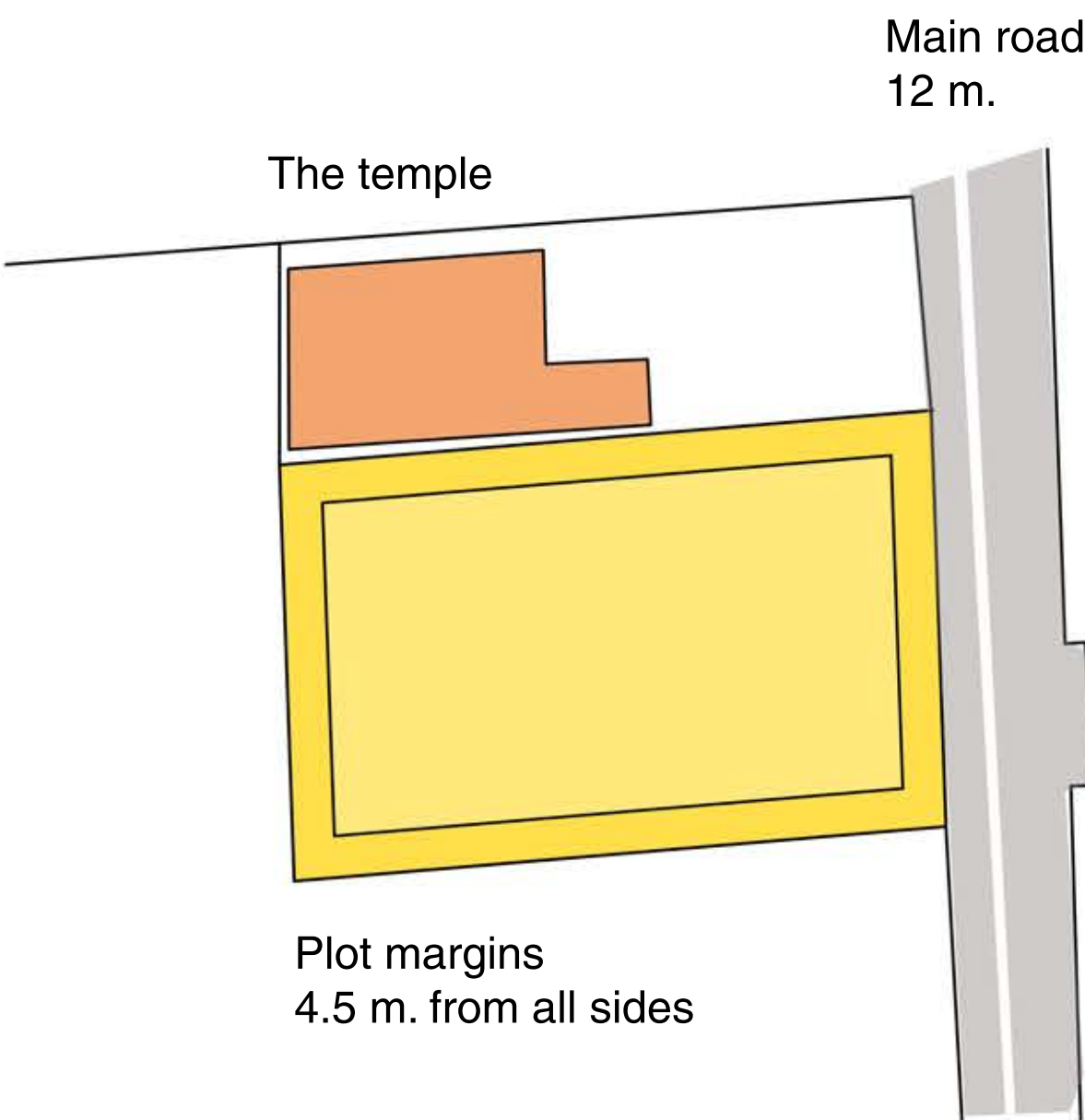


Available building plot for
proposed housing
F.S.I. 1.8

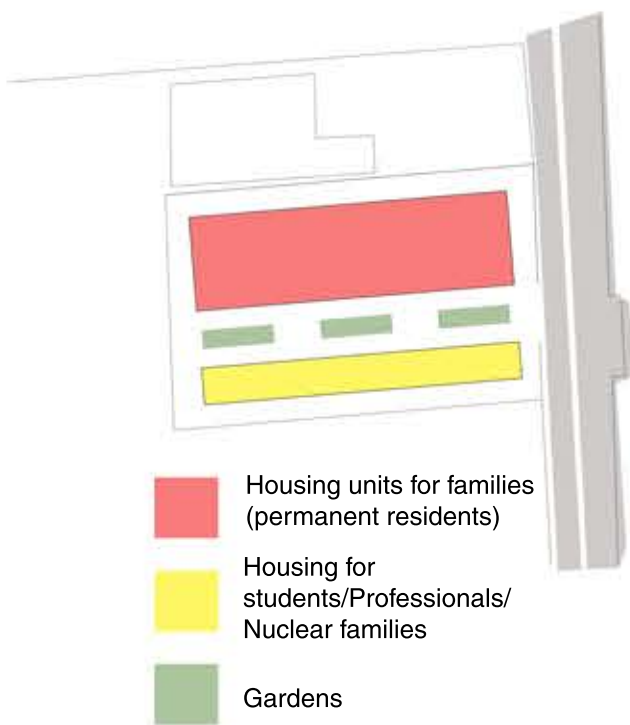
Area of the plot is **3,195 sq.m.**

FSI 1.8

Hence buildable area is **5,751 sq.m.**



Available plot is of size 61 x 36 m.



A

G + 3

G + 2

G + 1

Ground

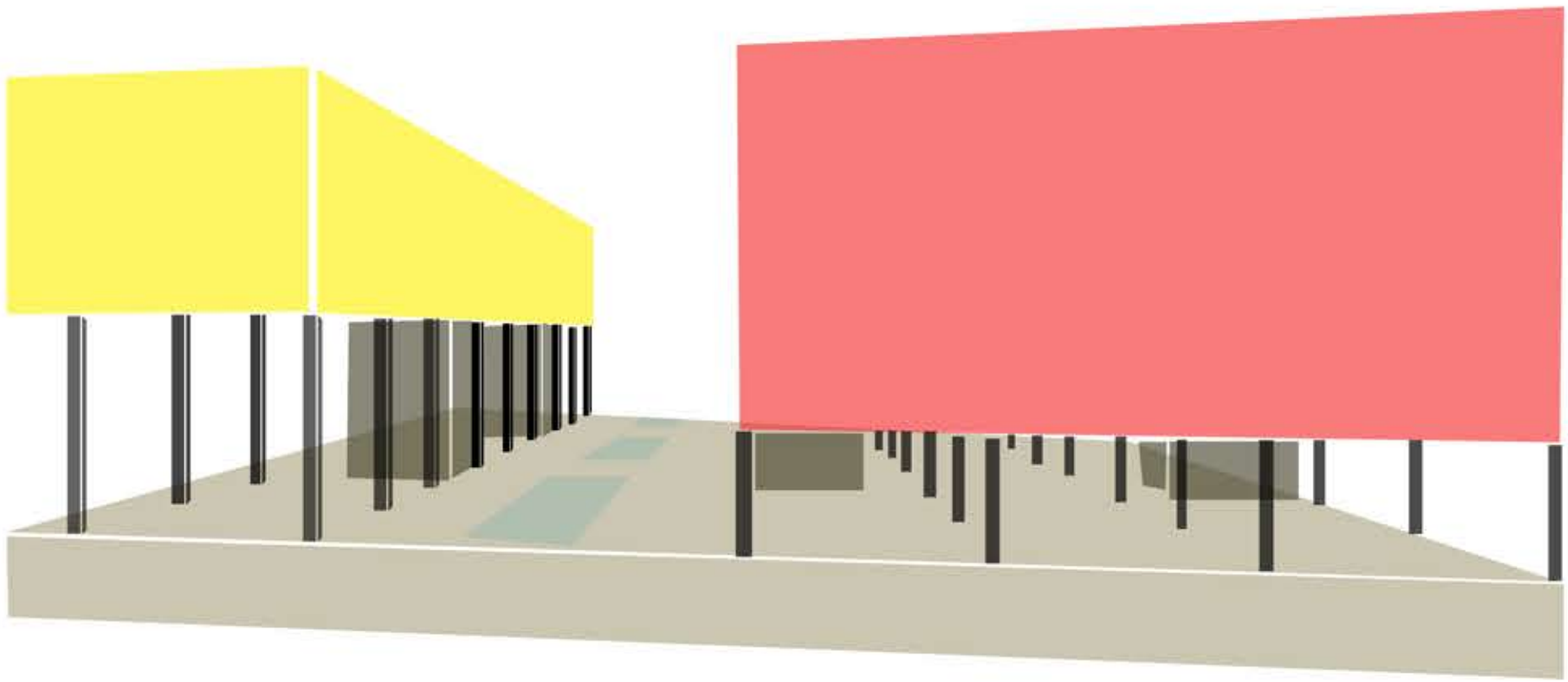
Site

- Units with 135 sq.m.
- Units with 95 sq.m.
- Recreational areas
- Parking

135 sq.m. - 18 apartments
95 sq.m. - 6 apartments

The site ipromotes linear arrangement of housing units which can be divided into 2 belts, one wider and one narrower serving to different user groups.

Both offer different size of apartments with areas 135 sq.m. and 95 sq.m. The larger apartments cater to joint families and the smaller ones cater to young professionals or nuclear families or some students looking for temporary housing arrangements.



Getting a free double volume under the smaller belt opens opportunities to house recreational areas for the entire scheme without using more FSI

The entire scheme is on stilts hence the wider belt can house the parking for all housing units without needing a basement