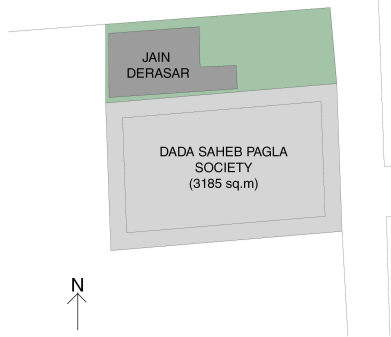


TIME PROBLEM 1

SITE:



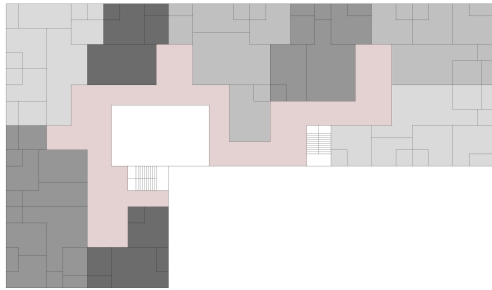
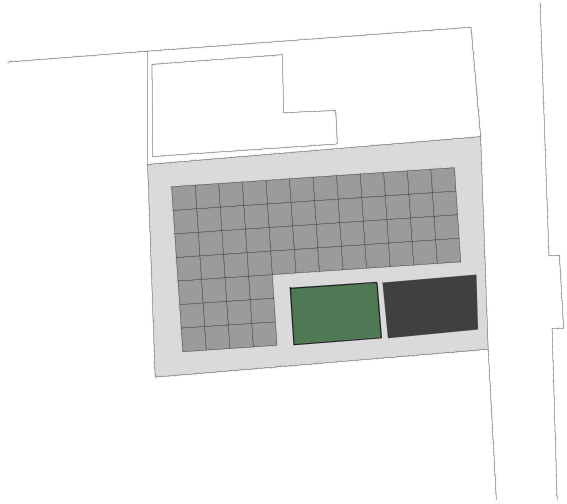
- SITE IS LOCATED NEXT TO A JAIN DERASAR. ALL THE RESIDENTS ARE HINDU.

- SITE IS LOCATED NEAR UNIVERSITY AREA. A LOT OF STUDENTS STAY IN THIS AREA.

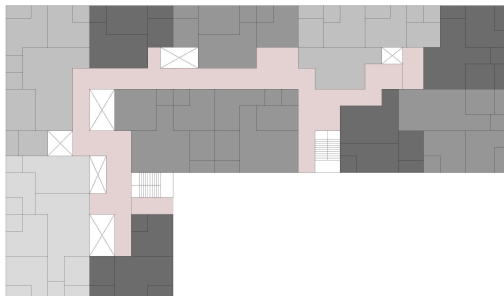
AS OBSERVED, THE HOUSEHOLDS IN THIS PART OF THE CITY HAVE A LOT OF VARIATIONS. HOUSEHOLDS DIFFER FROM 2 COLLEGE STUDENTS SHARING A FLAT TO A JOINT FAMILY.

THE CURRENT SCHEME OF THE SOCIETY HAS JUST 2BHK APARTMENTS. BUT FOR MORE COMFORTABLE LIVING, FAMILIES NEED THE VARIATIONS IN THE SIZES OF APARTMENTS AND NUMBER OF BEDROOMS.

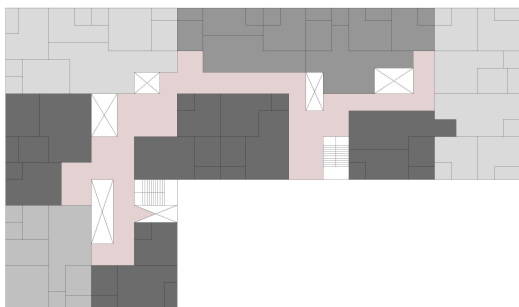
A COMMUNITY NEEDS THE SENSE OF OWNERSHIP AND TOGETHERNESS TO DEVELOP STRONG RELATIONSHIPS.



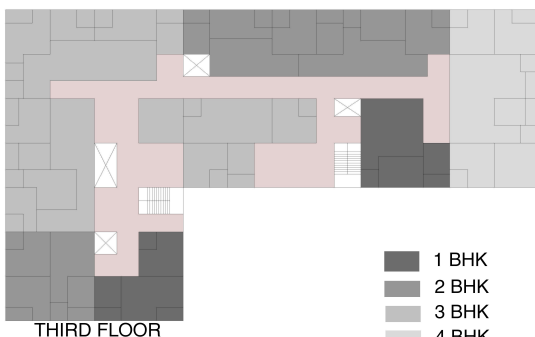
GROUND FLOOR



FIRST FLOOR

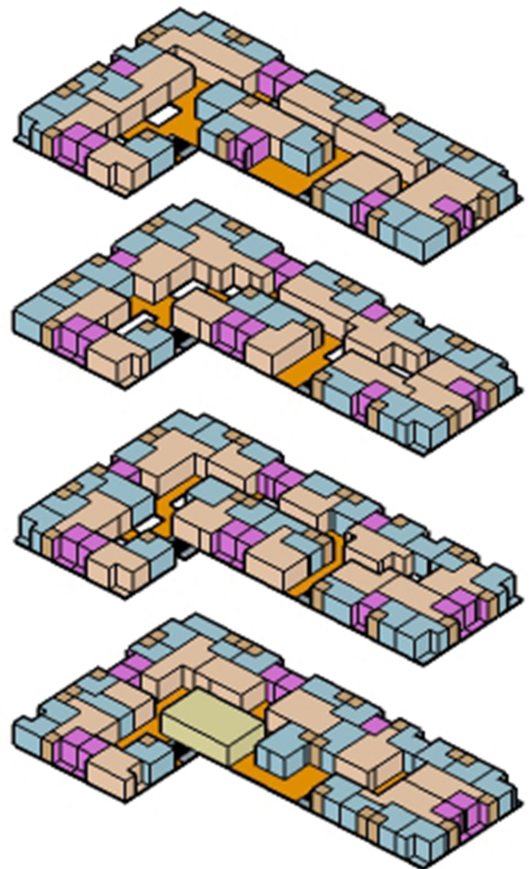


SECOND FLOOR



THIRD FLOOR

- 1 BHK
- 2 BHK
- 3 BHK
- 4 BHK



- LIVING AREA
- BEDROOMS
- KITCHEN
- TOILETS
- COMMON AREA