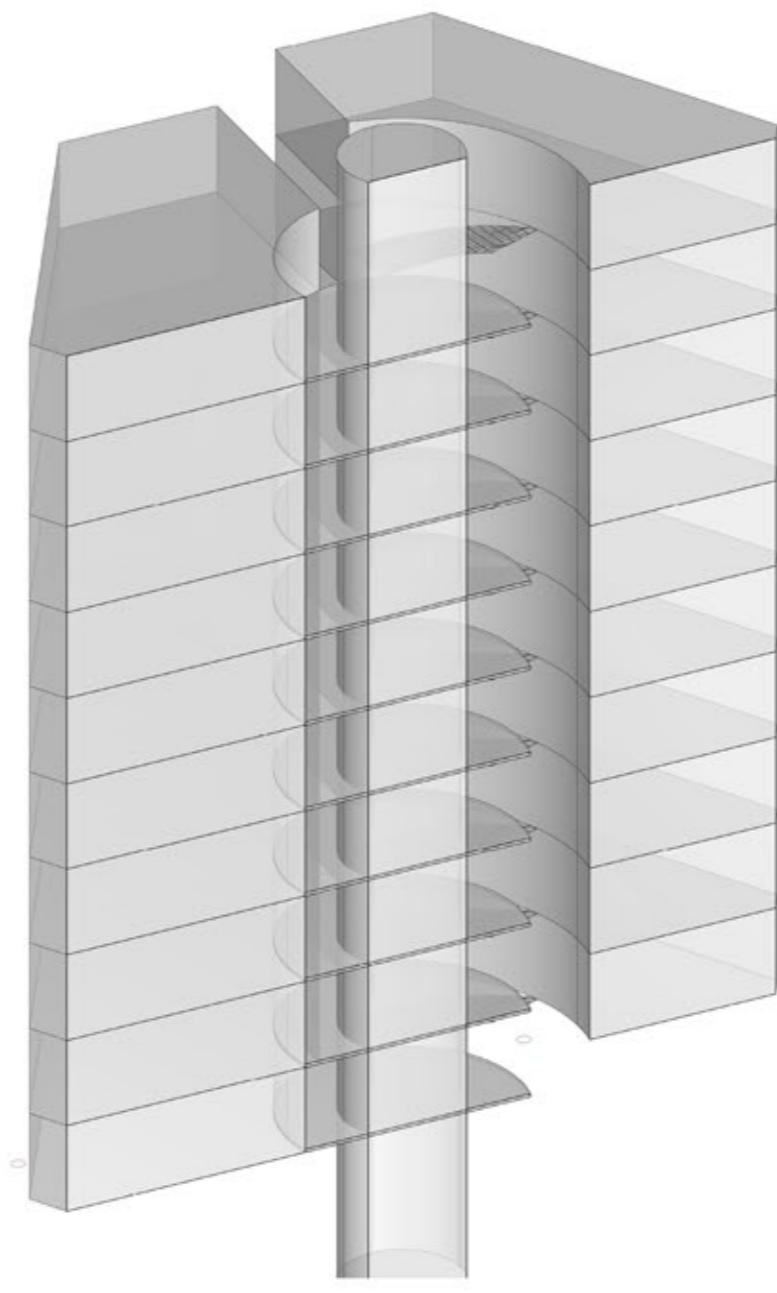
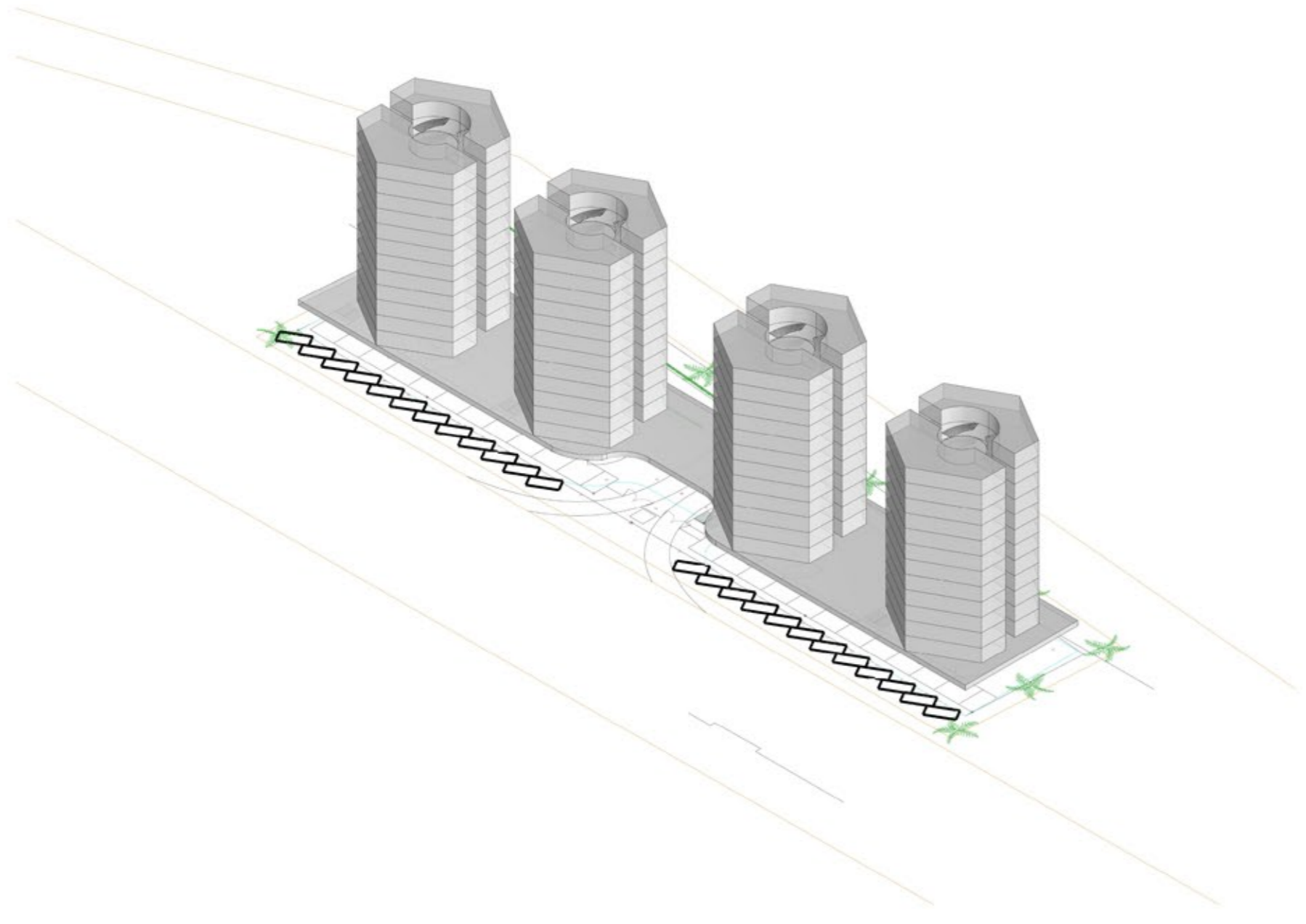


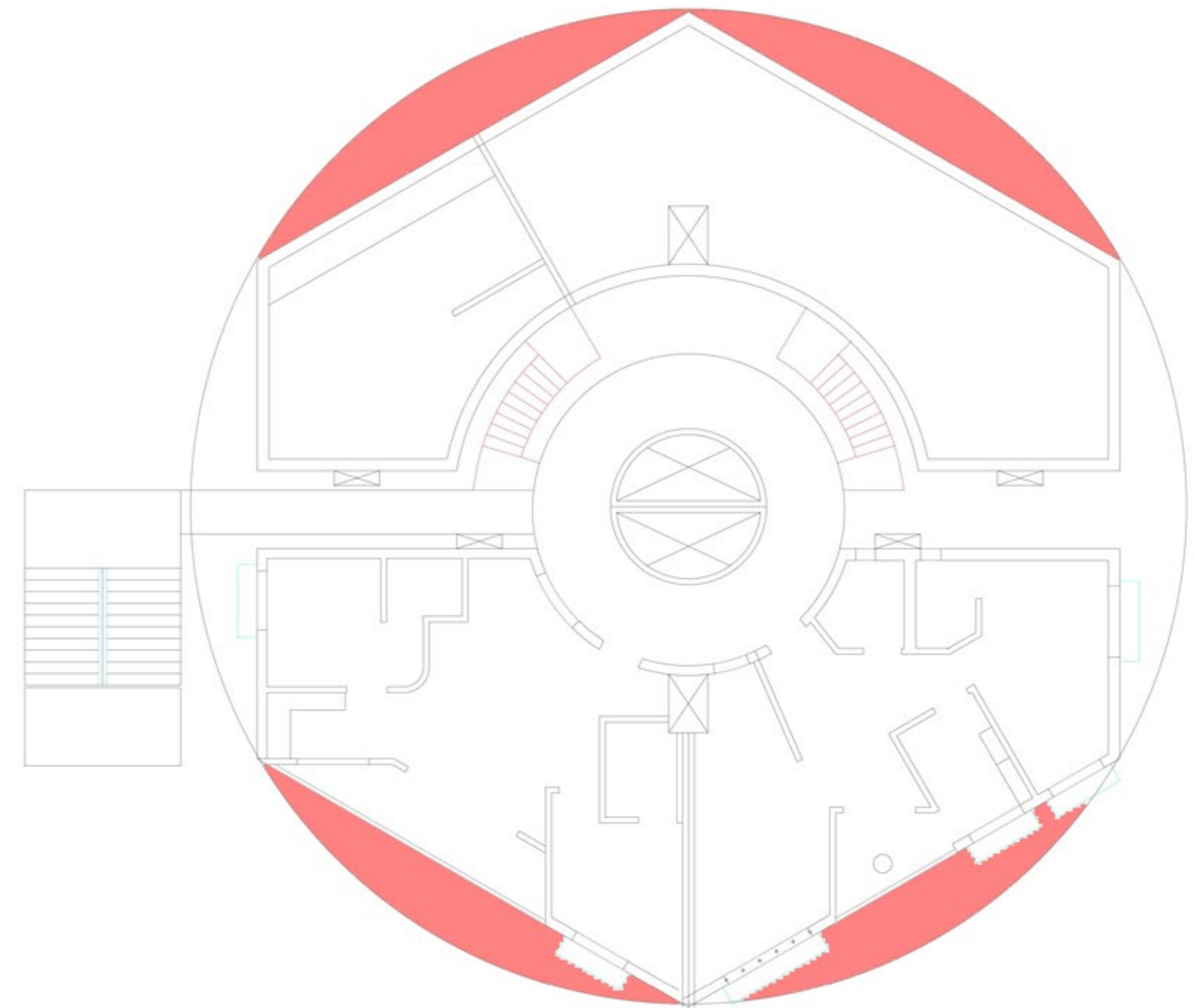
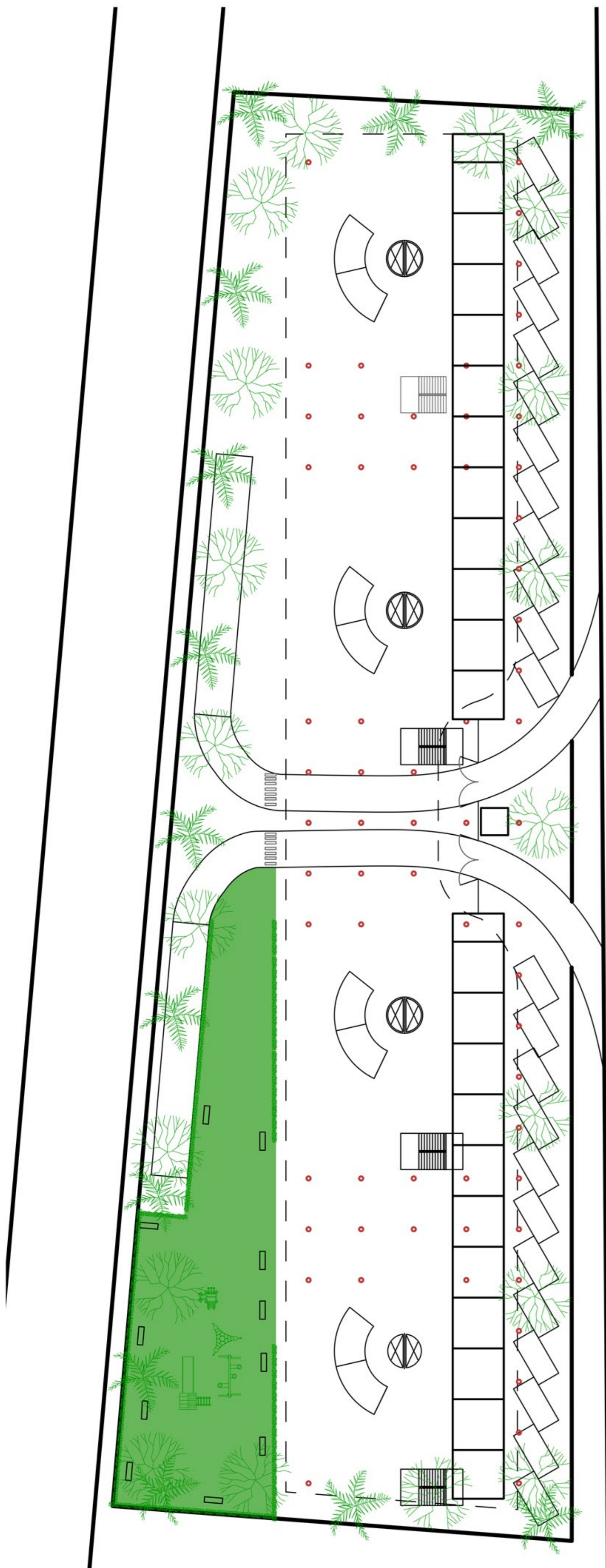
## Support and Infill



The design is such that the homeowner can choose what size of the house he wants to buy. Housing is a process that the homeowners go through their whole life. My design has tried to make the changes in the design, increase or decrease in size, add or subtract terraces and balconies easier to do.

Thus there is a central core and the apartments around it so that all the houses, big or small after division has an access to the lift lobby.

Also to provide privacy from the houses opposite their homes, the houses have been offset such that one opposite to other would be 1.5 m higher than the other. Front has been given for shops and underground basement parking caters to all the parking needs.



Red is the area that can be increased by individual homeowner

