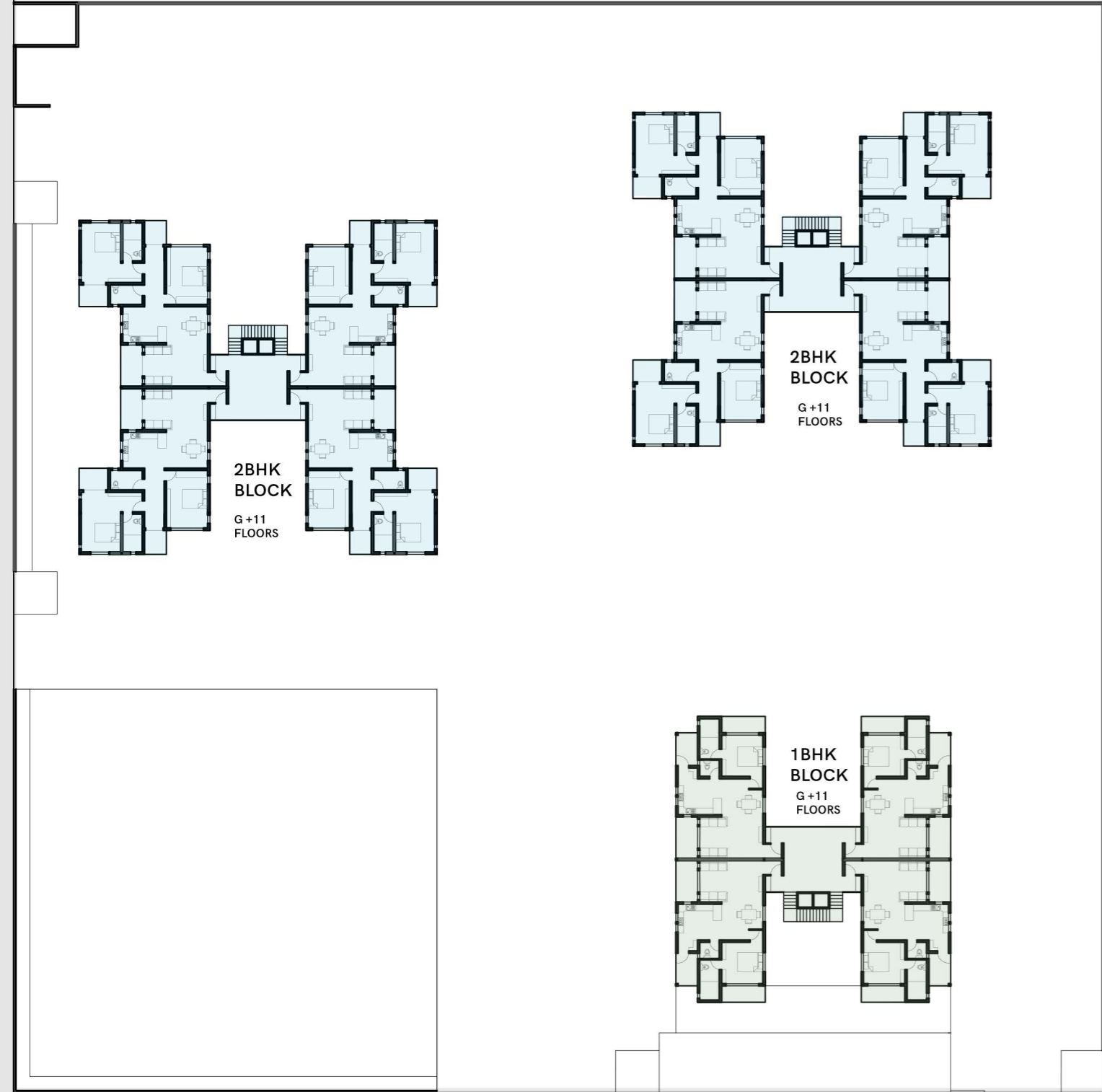


TIME PROBLEM TWO: GDCR COMPLIANT DESIGN

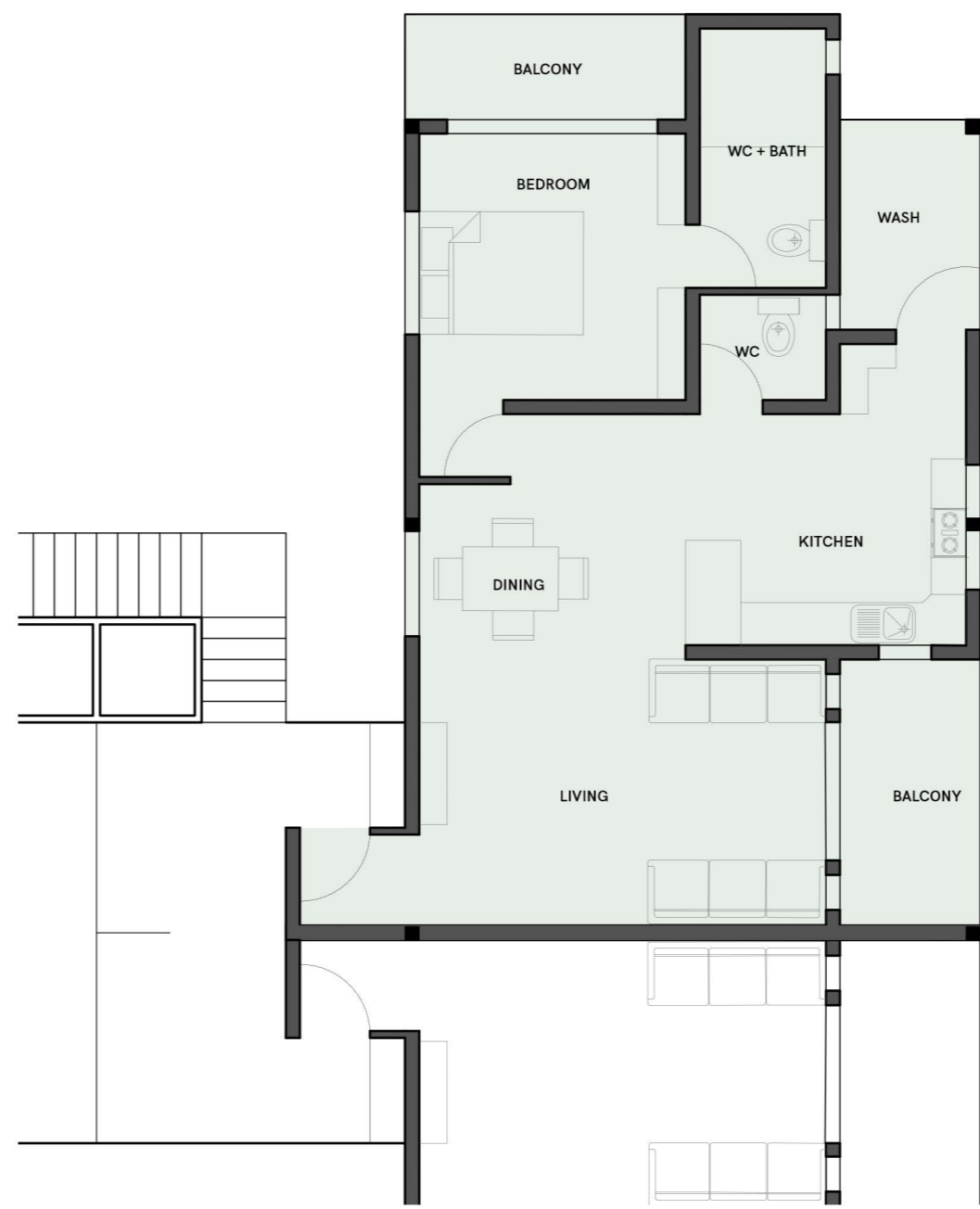
PLOT AREA+ 10000 SQ M.
FSI : 1.8
BUILDABLE AREA: 18000 SQ M
UTILISED FSI AREA: 18000 SQ M

1BHK AREA: 107 SQ M
2BHK AREA: 150 SQ M
1BHK BLOCK AREA (44 UNITS): 4708 SQ M
2BHK BLOCKS AREA (88 UNITS): 13200 SQ M
TOTAL UNITS AREA :17,908 SQ M
COMMERCIAL SHOPS AREA: 100 SQ M

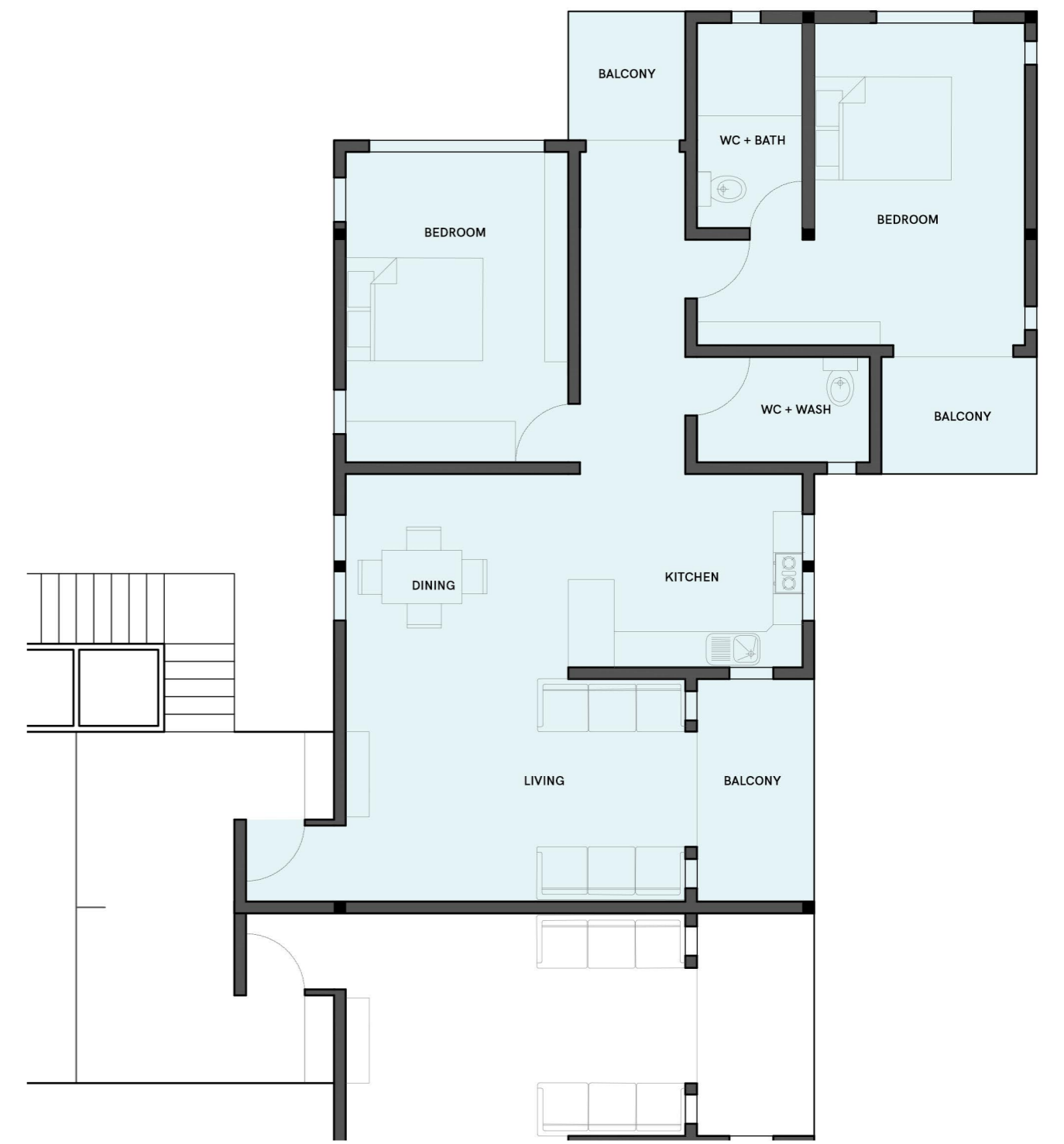
HENCE TOTAL UTILISED AREA: UNITS + COMMERCIAL
=17908 + 100
=18000 SQ M



BLOCK PLAN (1:500)



1BHK UNIT PLAN (1:100)



2BHK UNIT PLAN (1:100)



SITE PLAN (1:250)