

Art credits:
Riya Hamid

• Sounds of Home •
Chirag ua2514

Visuals and Their Association with “Home”

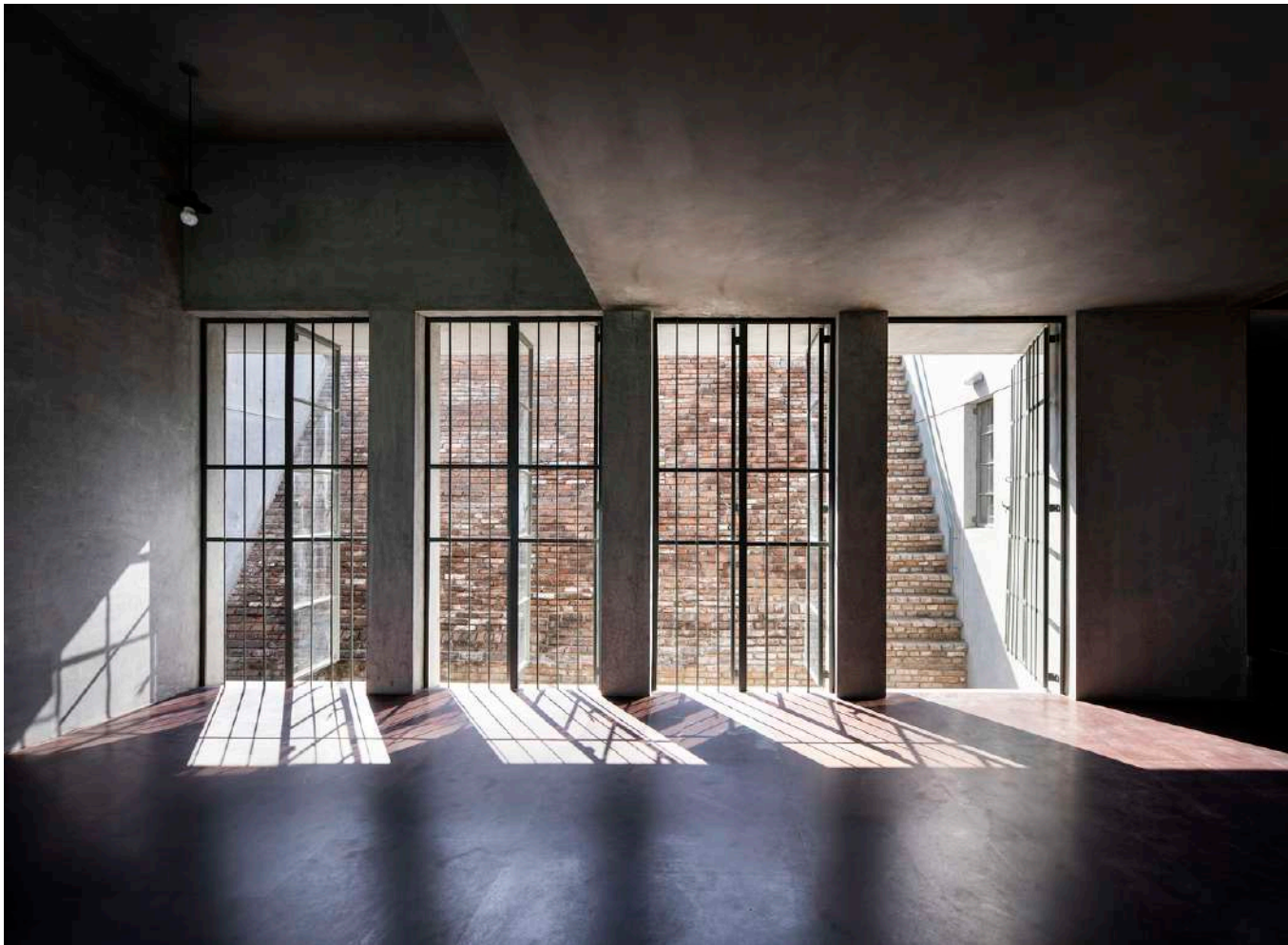
Homes from ArchDaily

Material juxtaposition:



MD apartment,
Saransh Architects,
AHmedabad, India.

Light quality:.



Court house..
MOAD.
Vandalur, India.

Visual connections between spaces:

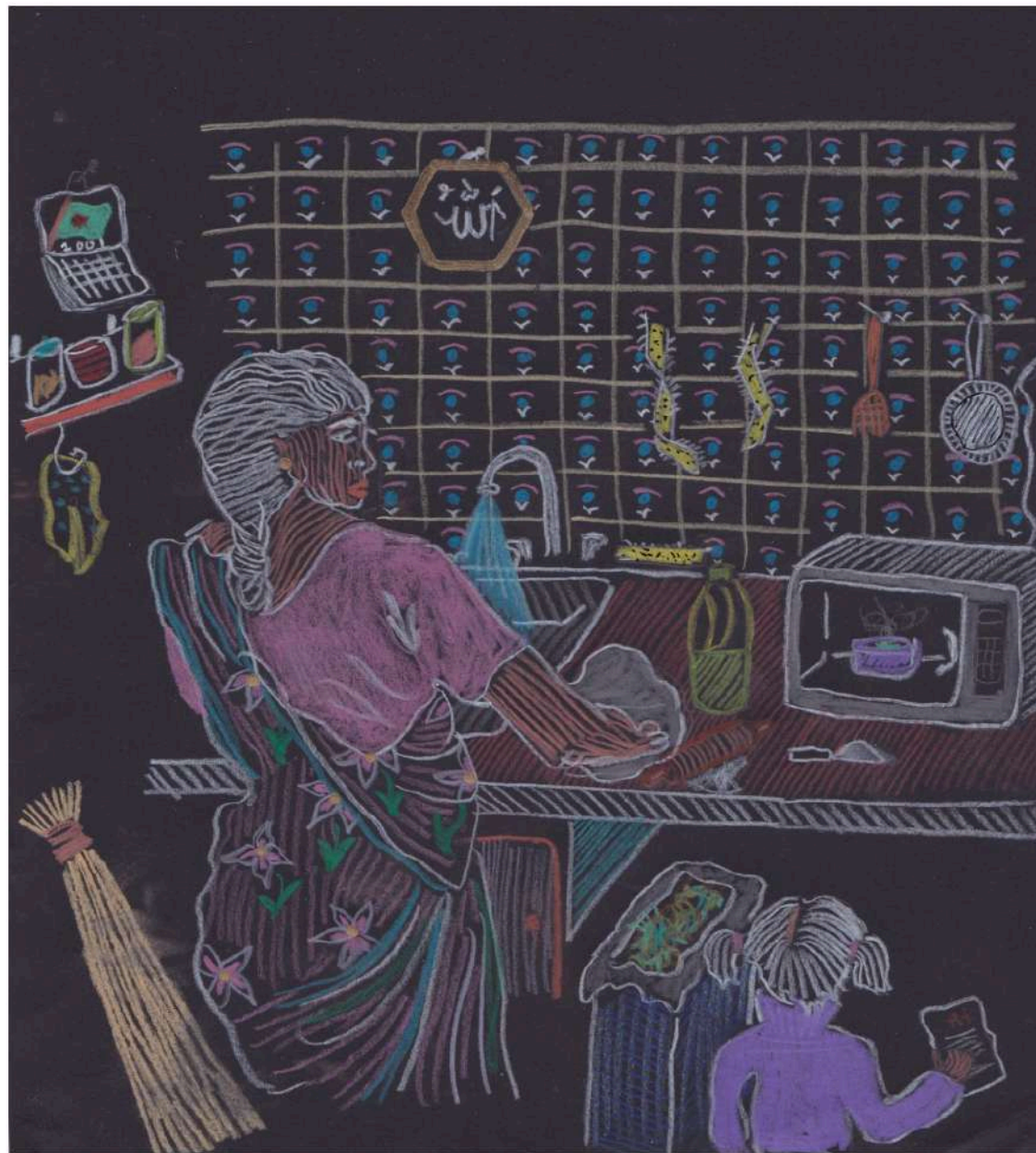


18 screens house.
Sanjay Puri Architects
Lucknow, India.

Sculptural forms:



Brick House,
iStudio
Wada, India.



Sounds and Their Association with
"Home"

“Sounds of Home”
vs
“Visuals of home”

What transports you back to the
memories of your home?

Architecture and its Impact on “Sounds of Home”

Observations from case studies of
various typologies of housing

CASE 1: Pre-designed bungalows society

1) Service shaft:

- Connects the ground floor bedroom to the above floors.
- Auditory connection to the parking space.



Ground floor plan

Raj Lakshmi
Bungalows,
Surat

2) Site Organization.



Existing layout

- Porous sides of the houses face each other.
- Possibility of being overheard while using the garden space..
- Reluctance to open the windows/doors.

Possible layout:



- Garden becomes more private (auditorily and visually) with change in the organization of houses..

CASE 2: Private Bungalow



Ground floor
plan

Lavanya society.,
Vasna,
Ahmedabad

CASE 2: Private Bungalow



Ground floor
plan

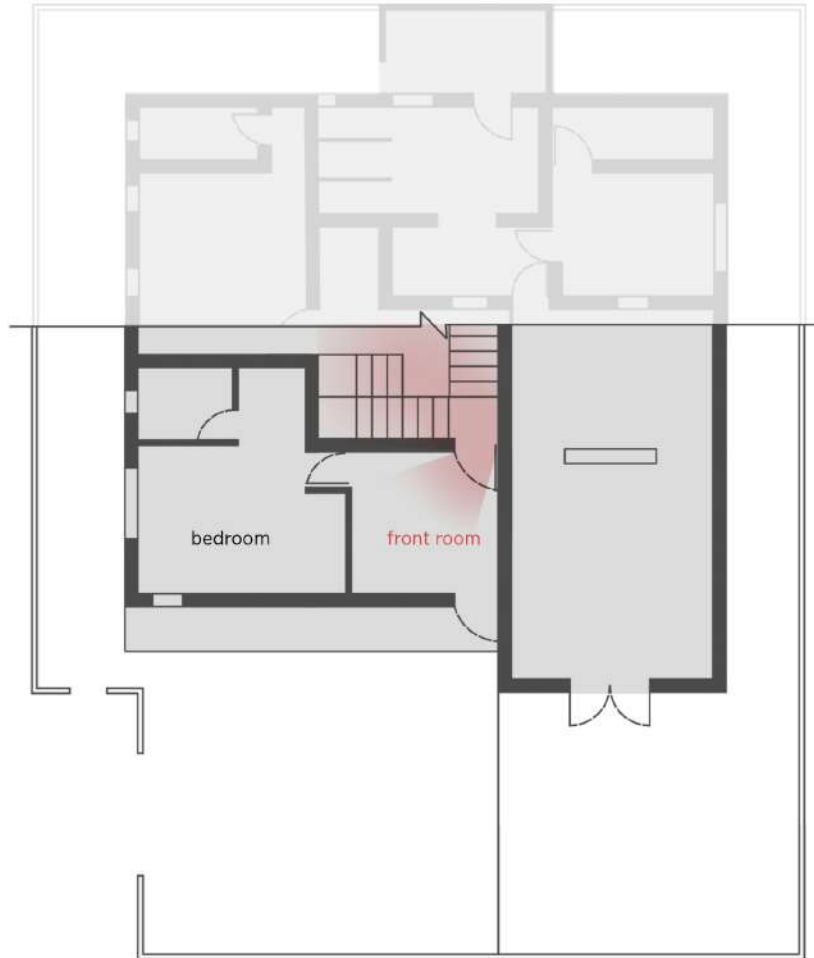
1) Closed Kitchen and Utilities

- No sound travels from one space to another.
- Service window (originally open) now closed for the AC in living room.
- Reduced sense of attachment to the "sounds of kitchen" and the "home".

Lavanya society.,
Vasna,
Ahmedabad

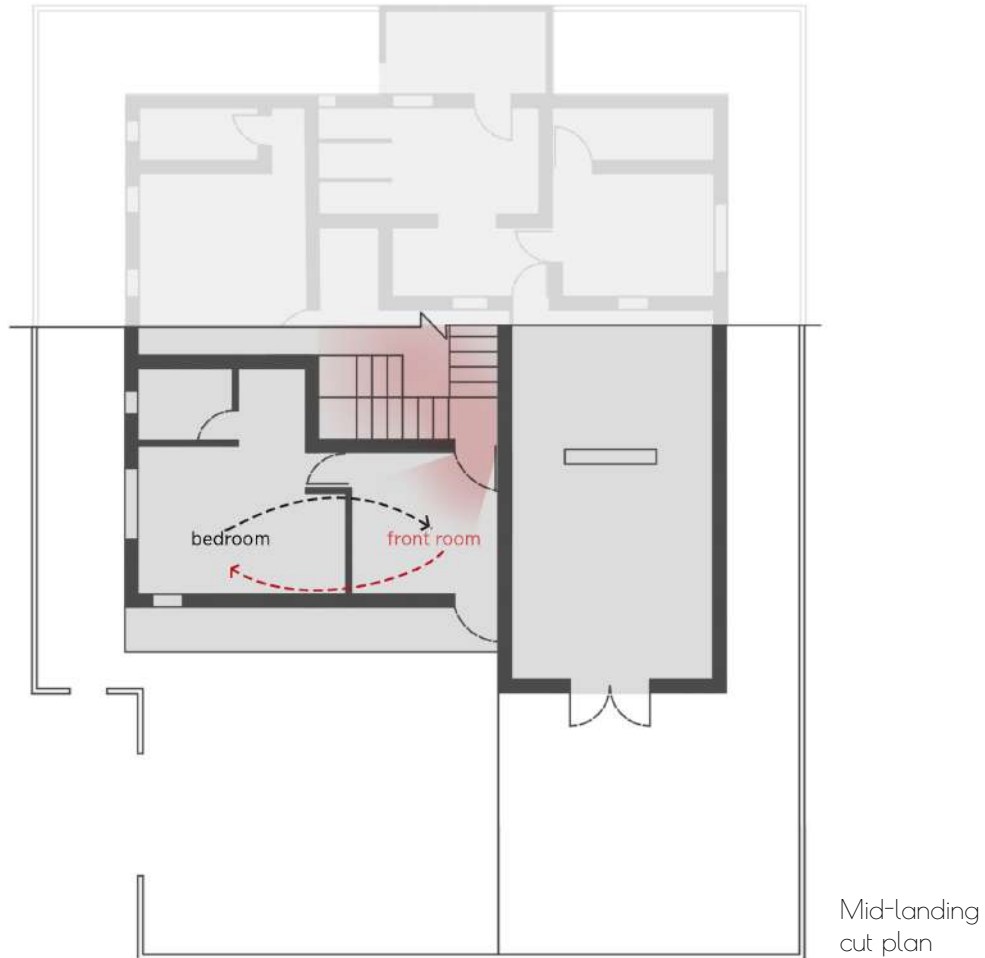
2) Auditory privacy in Bedroom

Existing room organization:



2) Auditory privacy in Bedroom

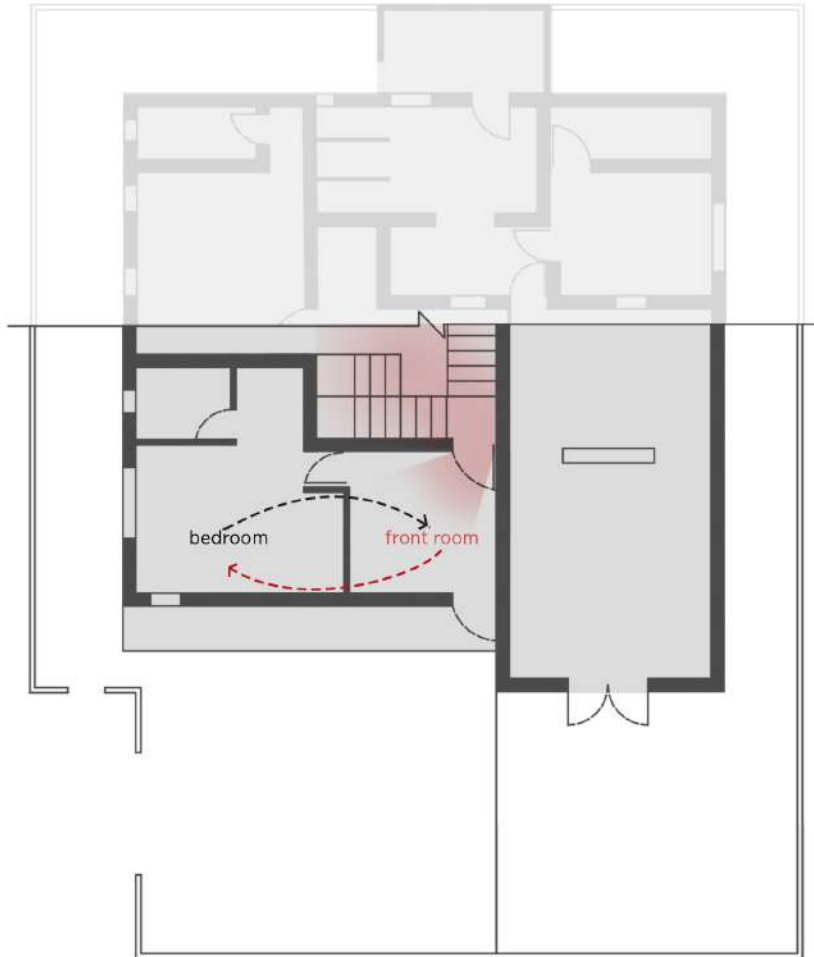
Existing room organization:



- Interchanging the functions of the front and the bedroom will increase the “sense of accessibility” while maintaining the visual privacy.

2) Auditory privacy in Bedroom

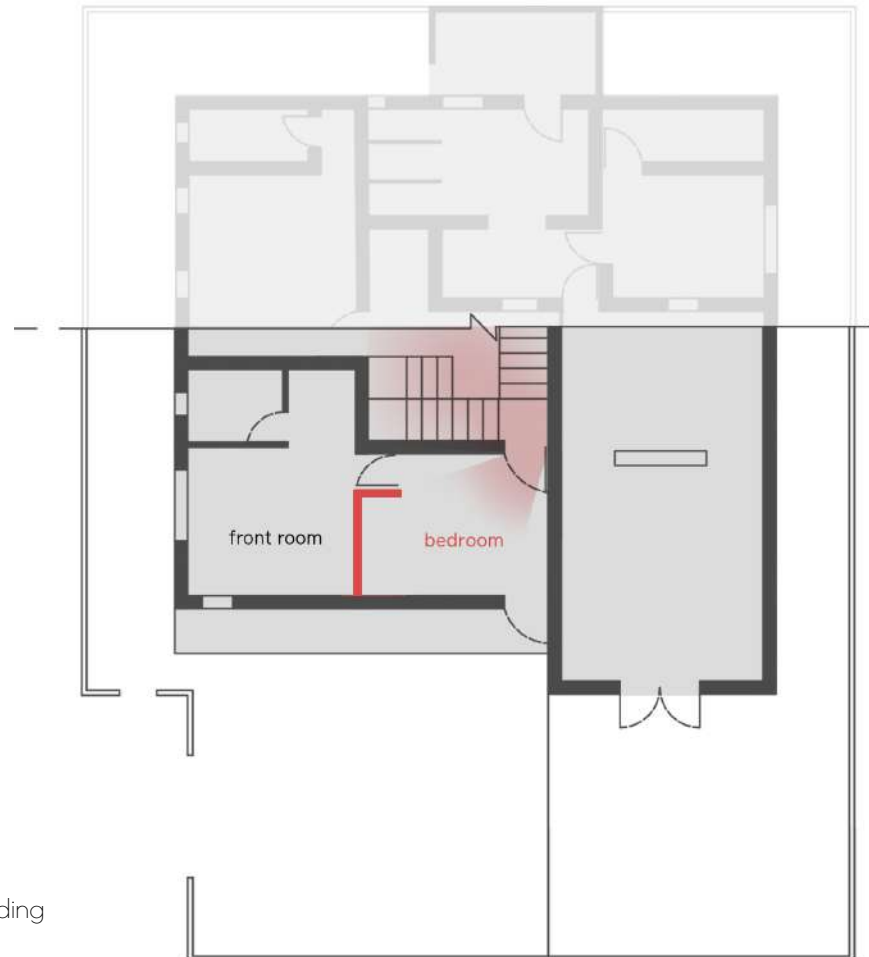
Existing room organization:



Mid-landing cut plan

- Interchanging the functions of the front and the bedroom will increase the “sense of accessibility” while maintaining the visual privacy.

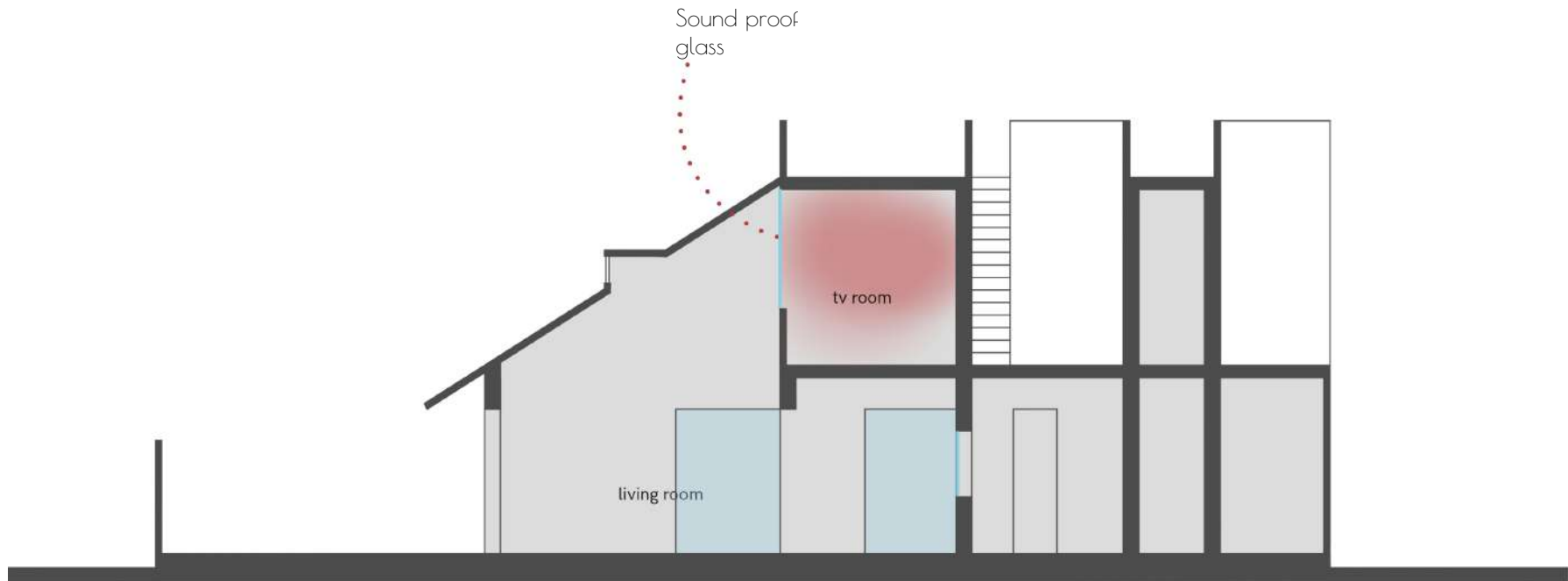
Possible room organization:



- The partition wall is mirrored to include the study table in the first room

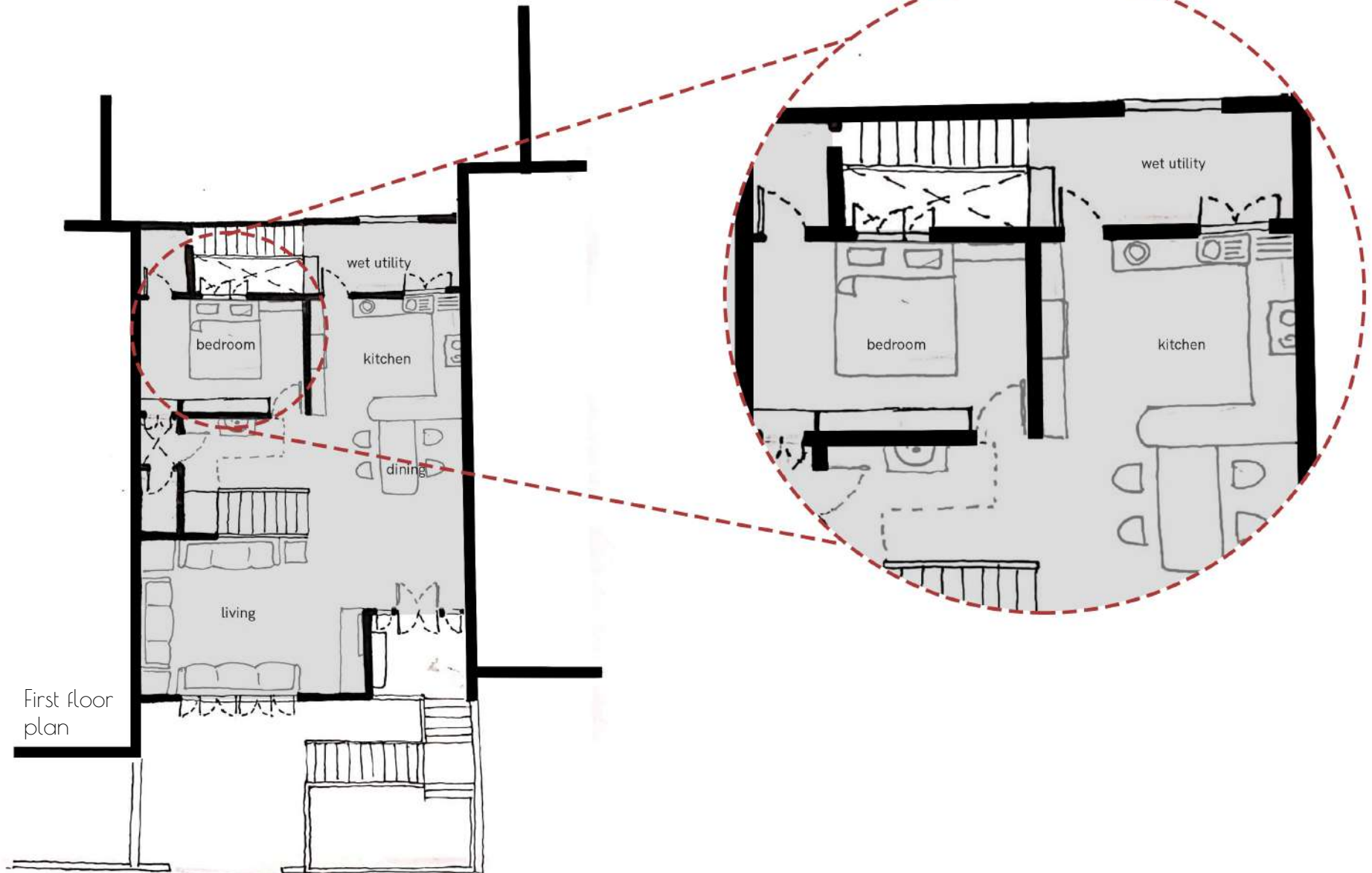
3) Environment of the living room:

- Absence of passive television sound.
- Closed double volume space.
- Uncomfortable silence.

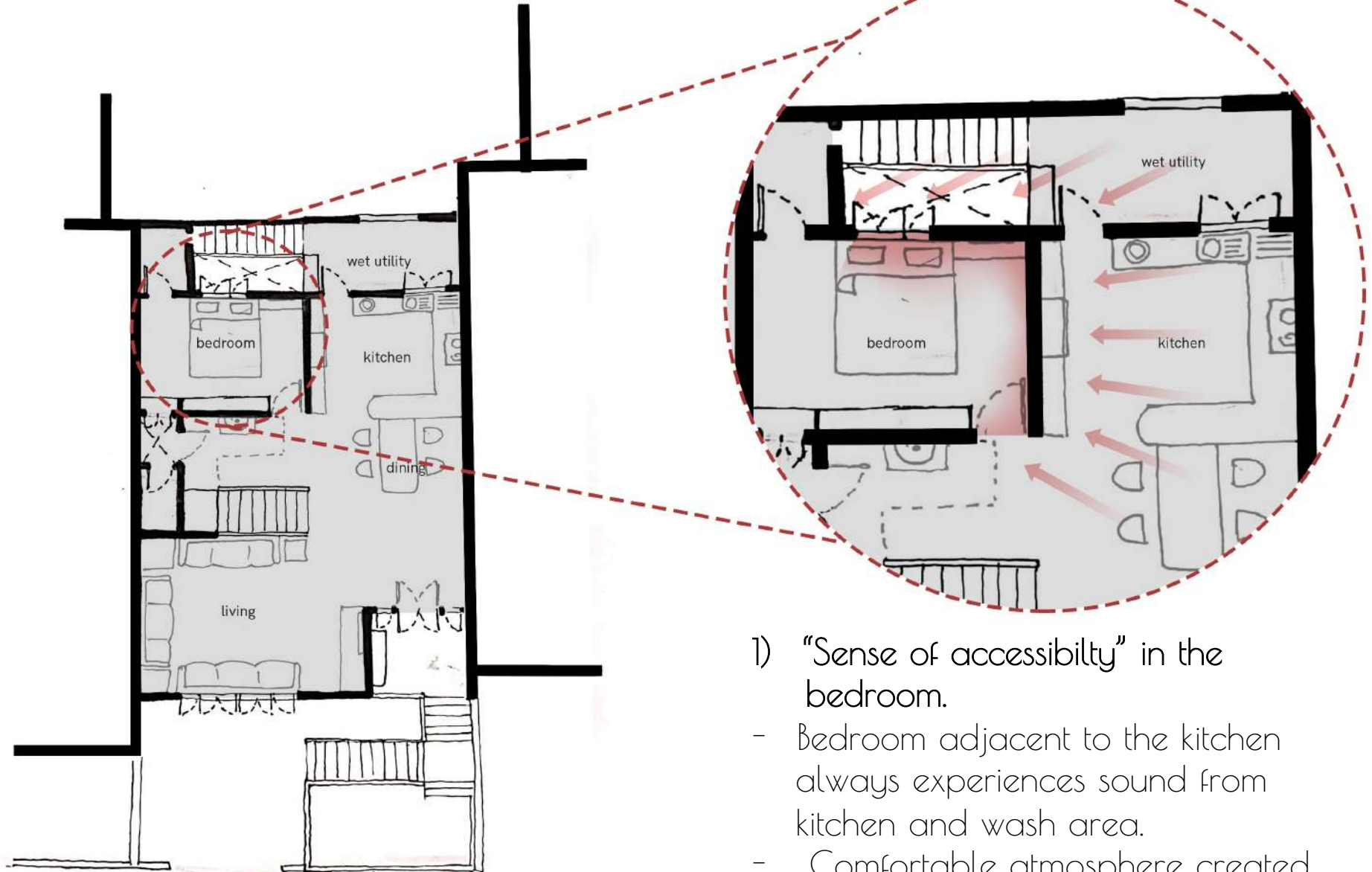


Schematic section

CASE 3: Private bungalow with shared walls.



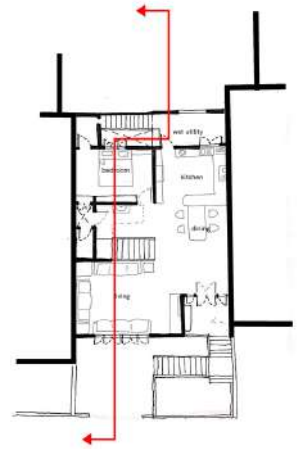
CASE 3: Private bungalow with shared walls.



- 1) "Sense of accessibility" in the bedroom.
 - Bedroom adjacent to the kitchen always experiences sound from kitchen and wash area.
 - Comfortable atmosphere created due to presence of passive sounds.

2) Room allocation based on preferred sounds

- Father, who sleeps in the afternoon prefers sounds of a relatively silent street over sounds of washing of vessels in the utility area.



Schematic section

3) Shared walls

- Sounds of adjoining houses heard through the shared wall.



3) Shared walls

- Sounds of adjoining houses heard through the shared wall.



CASE 4: Decision of not fixing the pigeon net

- Pigeon sounds becomes a prominent part of the “sounds of home”



*"We have to share our home with pigeons. She is the mummy pigeon and the baby is under my brother's bed. It makes a stinky mess but also cute noises (which are annoying in the morning).
I don't love or hate the pigeons."*

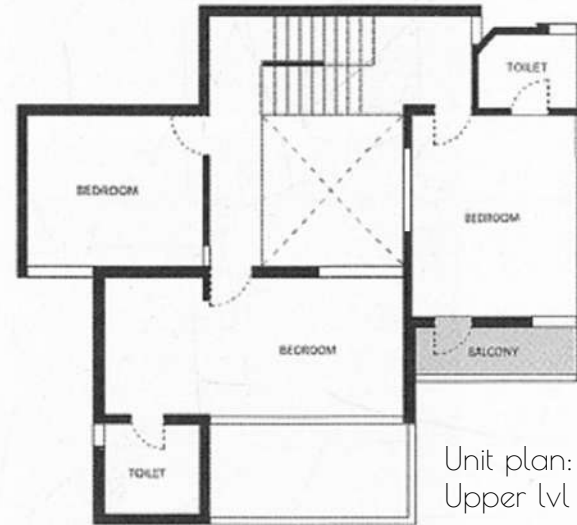
CASE 5: High Rise housing

- 1) Center point apartments, Ahmedavbad.

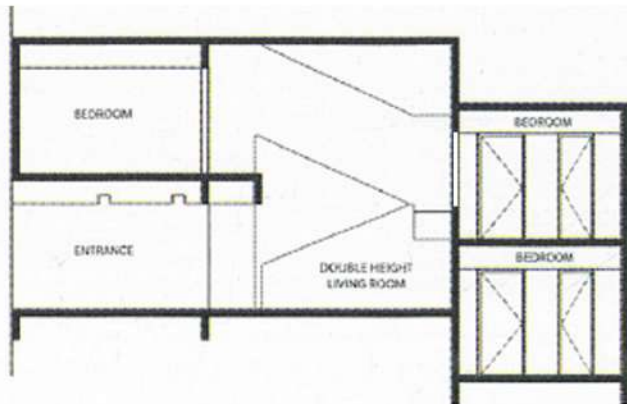
Unit level::



Unit plan:
Lower lvl



Unit plan:
Upper lvl

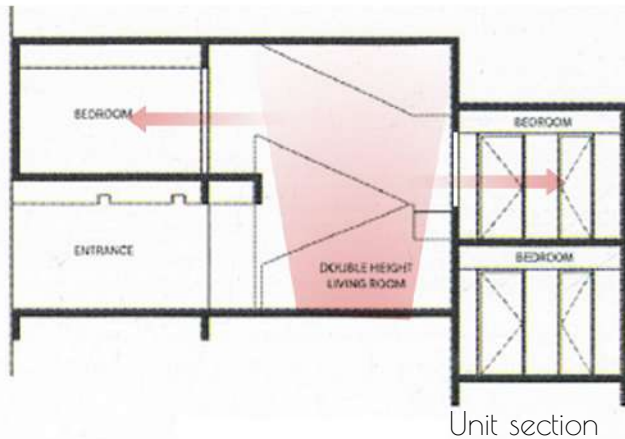
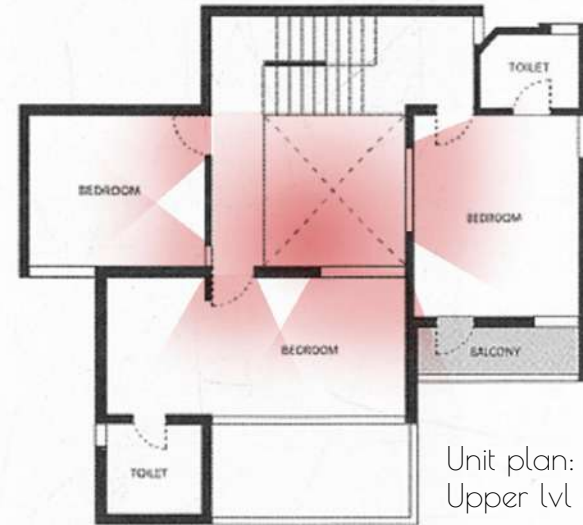
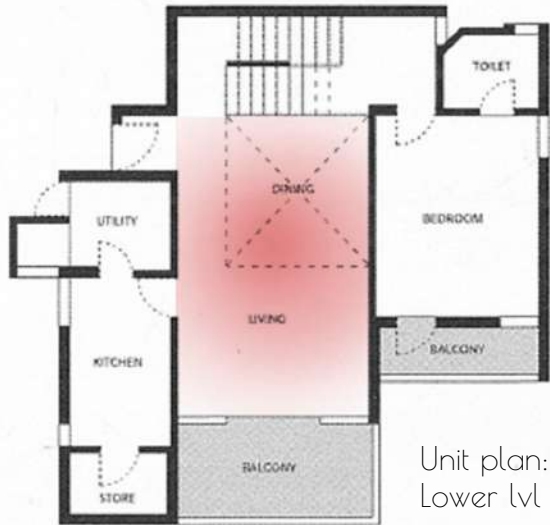


Unit section

CASE 5: High Rise housing

- 1) Center point apartments, Ahmedabad.

Unit level::

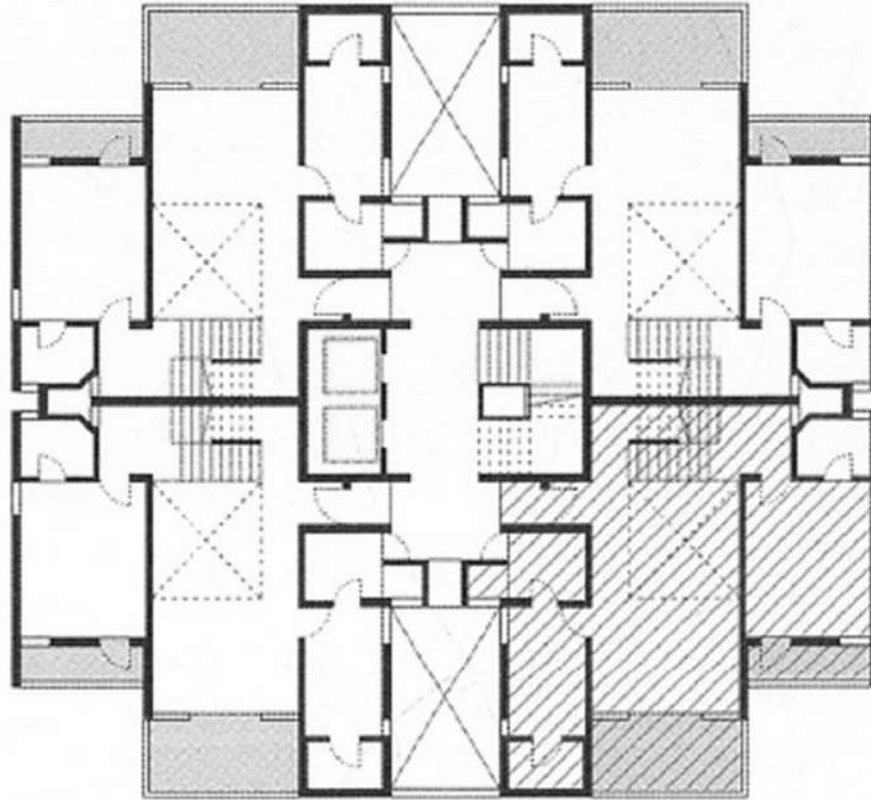


- Double volume in the living spaces keeps the rooms auditorily connected.. even while the visual privacy is maintained..

CASE 5: High Rise housing

- 1) Center point apartments,
Ahmedabad.

Block level:

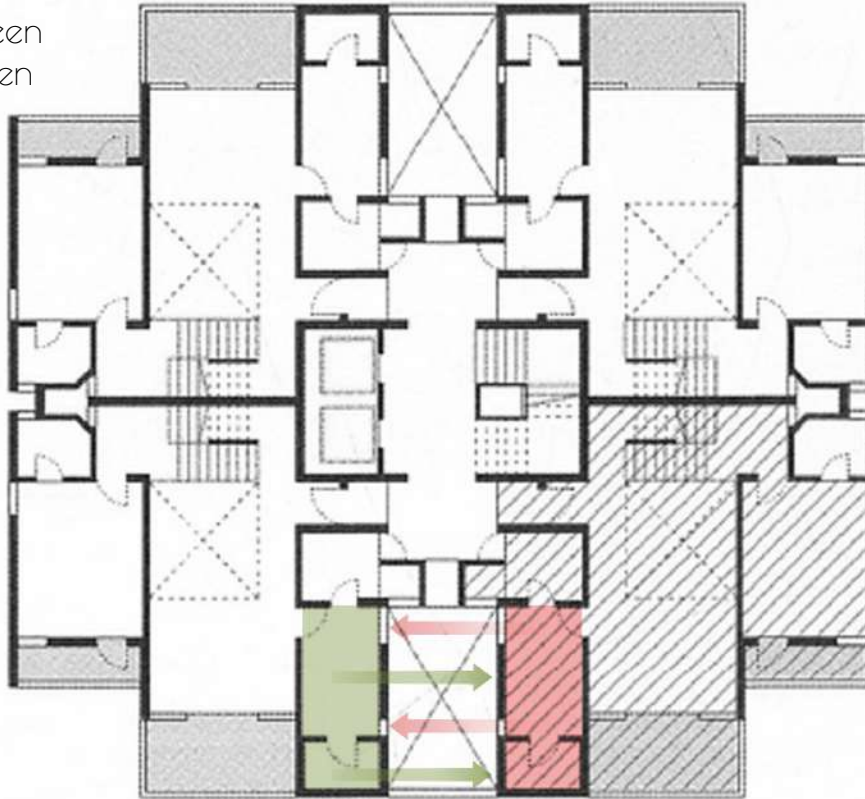


CASE 5: High Rise housing

1) Center point apartments, Ahmedabad.

Block level:

- Auditory relationship between neighbors through the kitchen sounds:

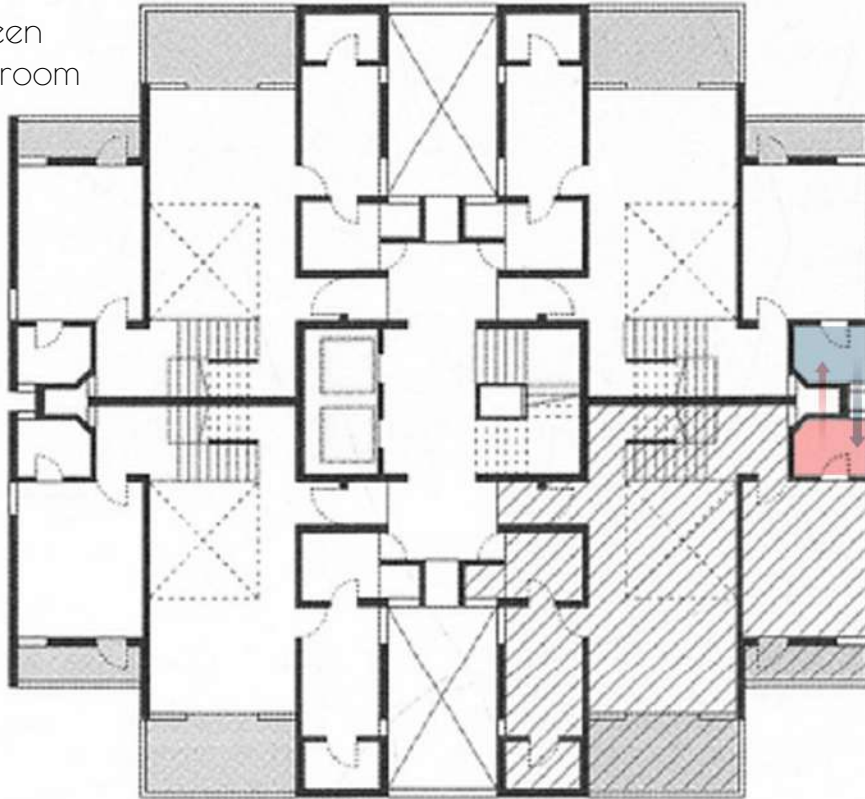


CASE 5: High Rise housing

1) Center point apartments, Ahmedabad.

Block level:

- Auditory relationship between neighbors through the bathroom sounds:



2) Sarvesh apartments,
Ahmedabad.

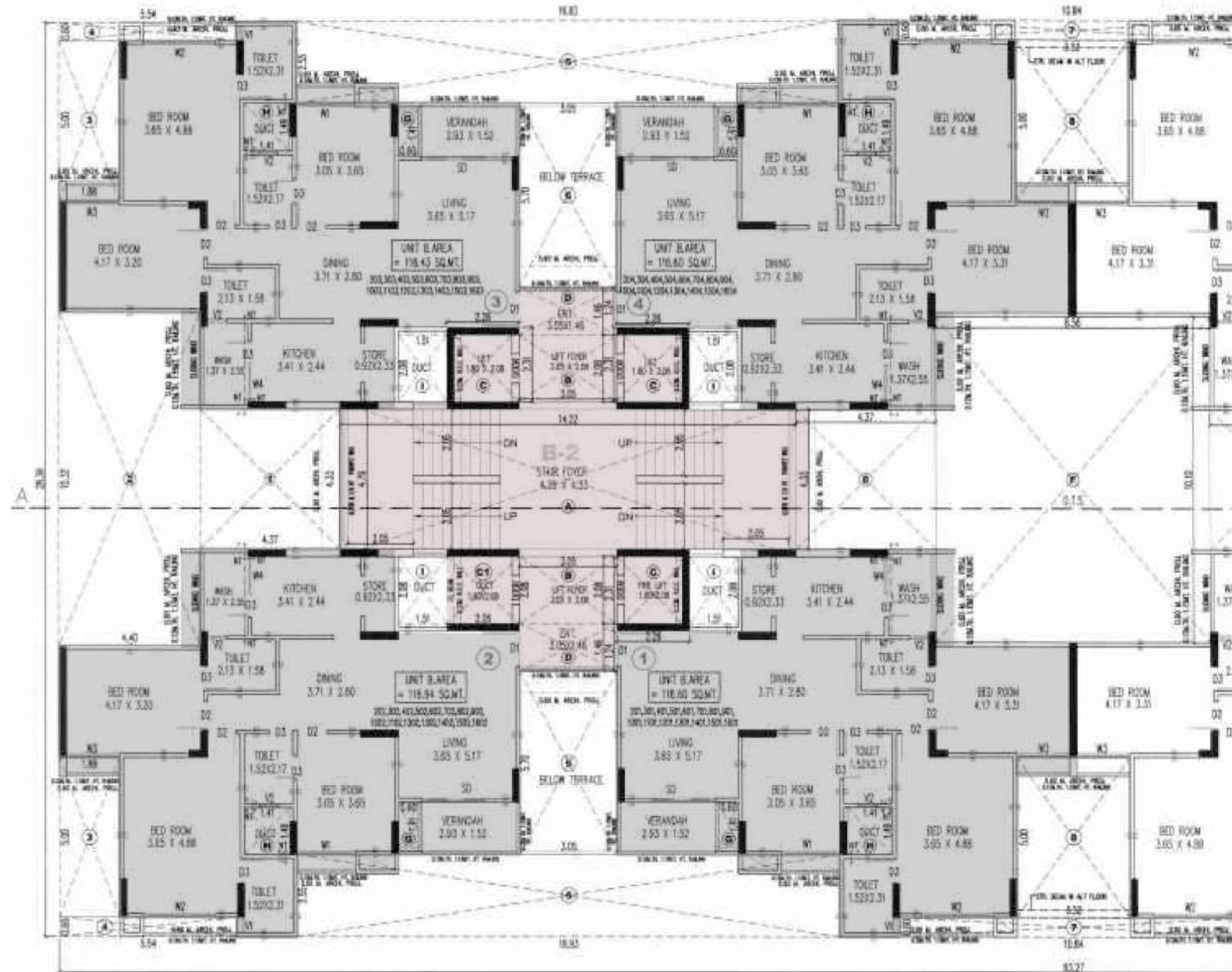


2) Sarvesh apartments,
Ahmedabad.



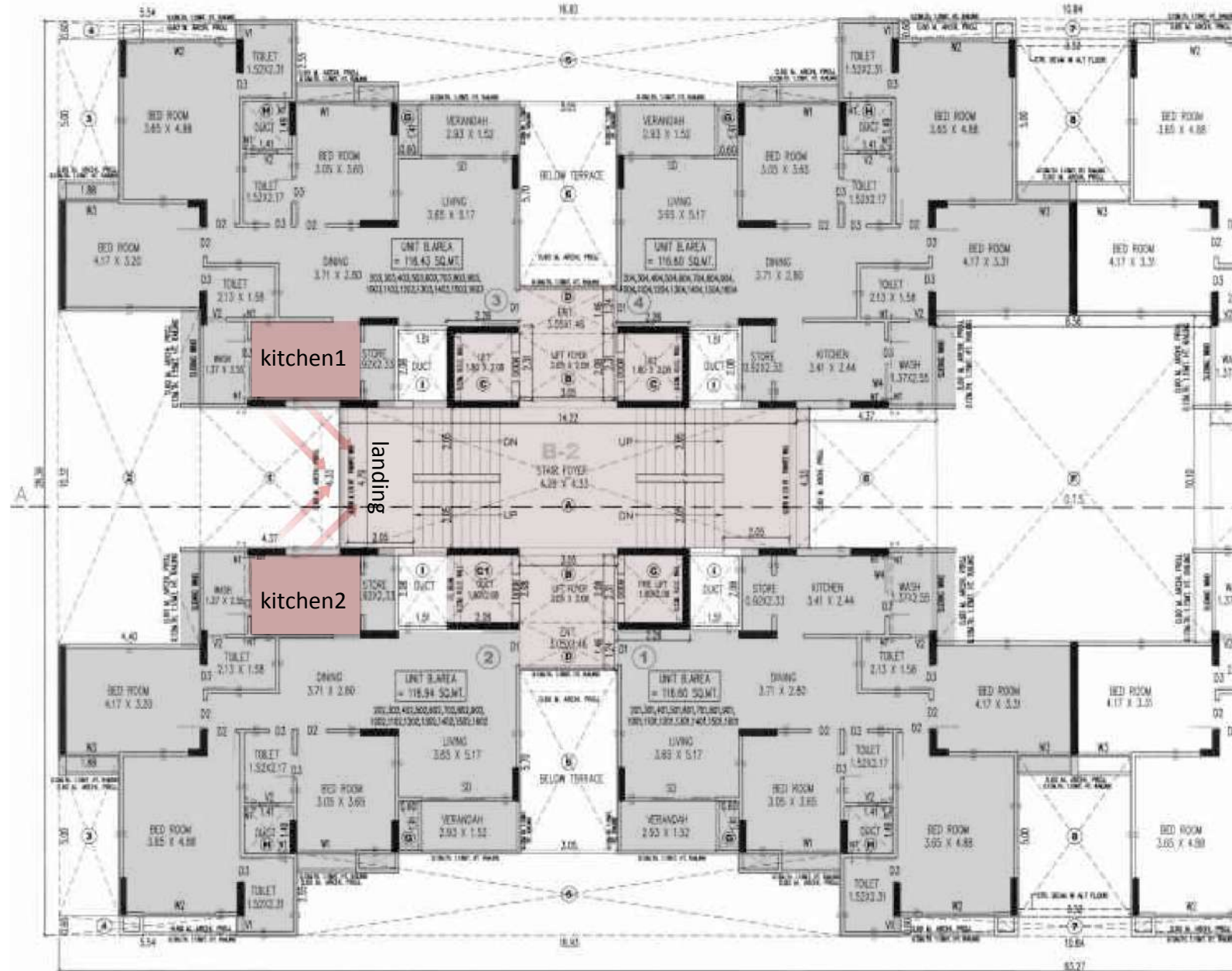
- Lift sounds (stopping at any floor) heard by only one out of four units on one floor.:

3) Orchid apartments, Ahmedabad.



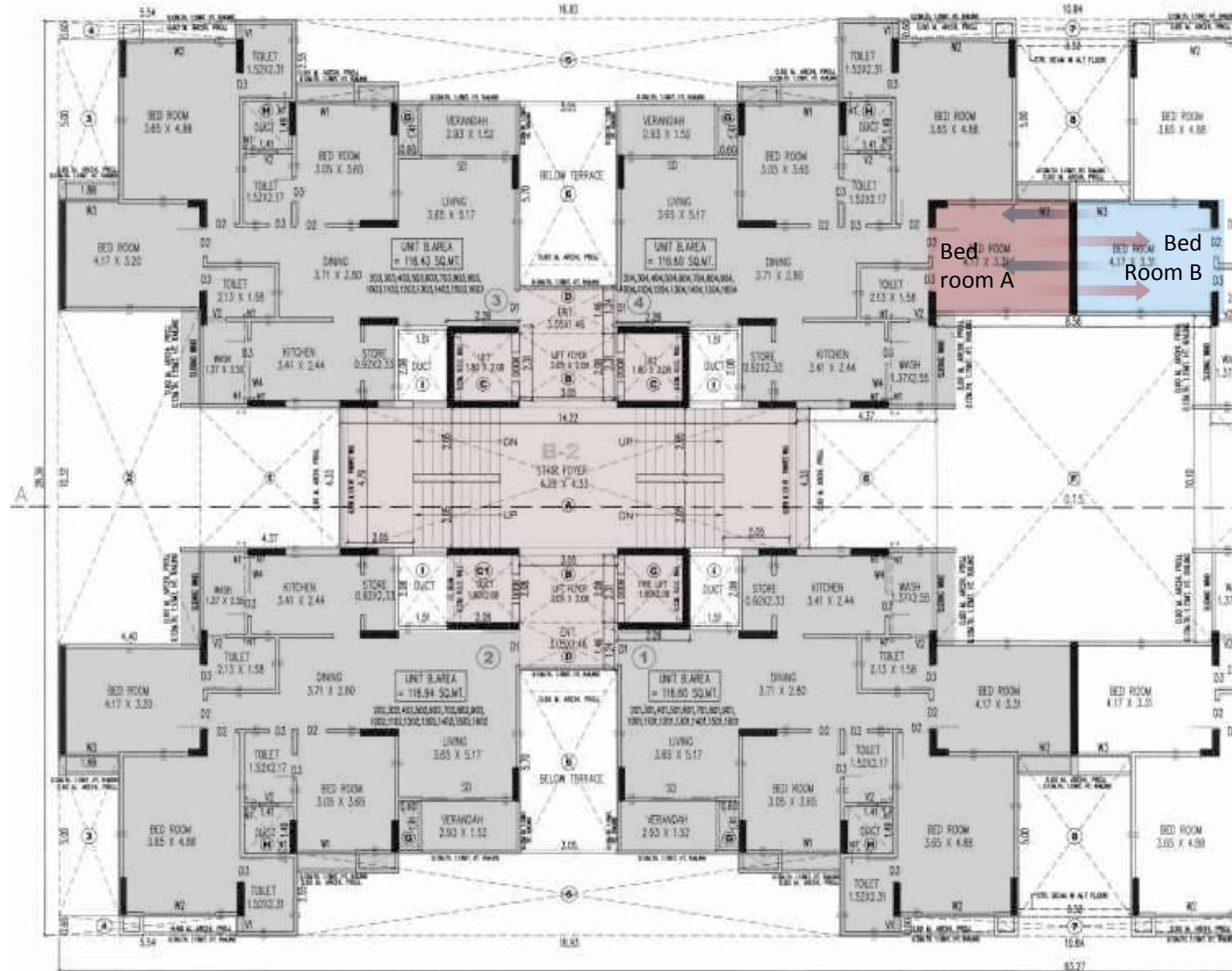
3) Orchid apartments, Ahmedabad.

- Sounds from four
kitchens heard at one
particular landing.



3) Orchid apartments, Ahmedabad.

- Auditory relationship with neighbors from a different block because of a shared bedroom wall.



THANK YOU