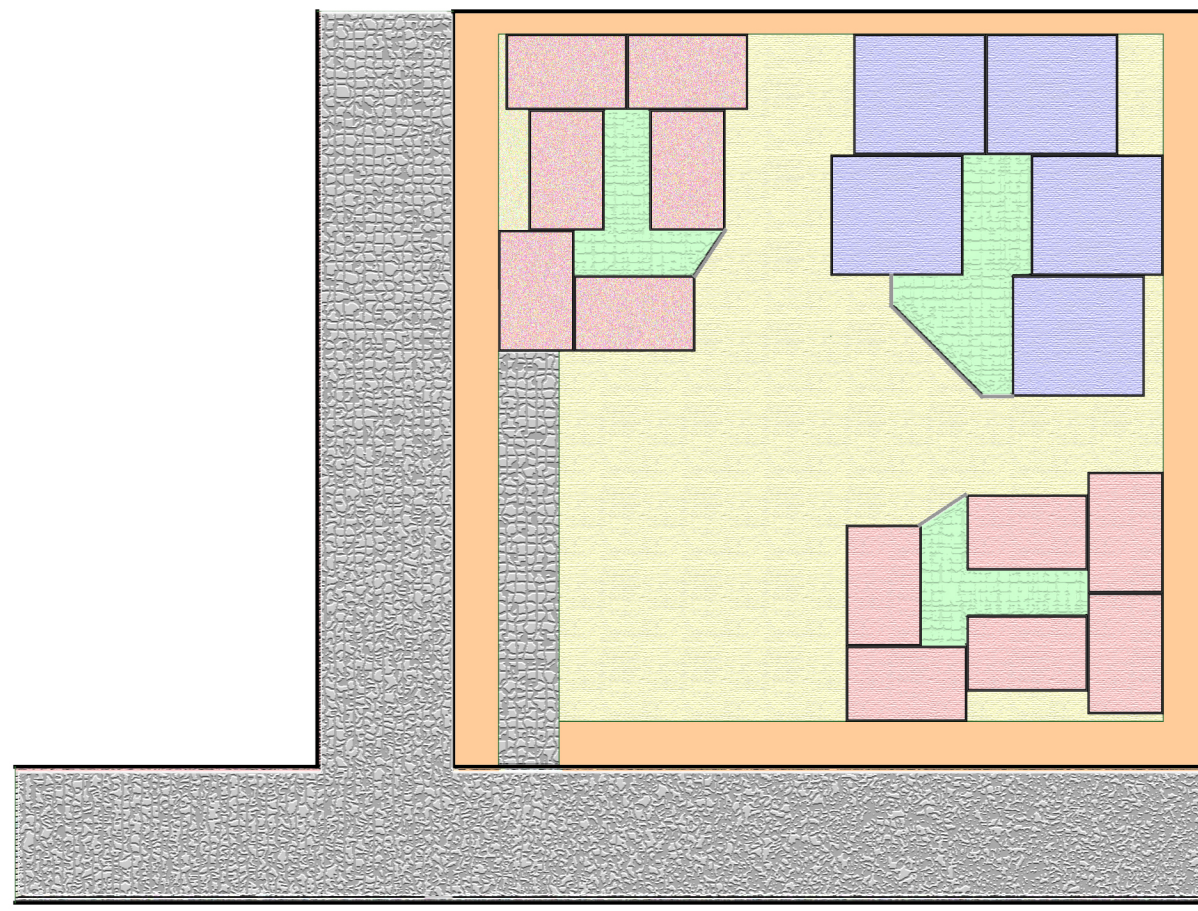
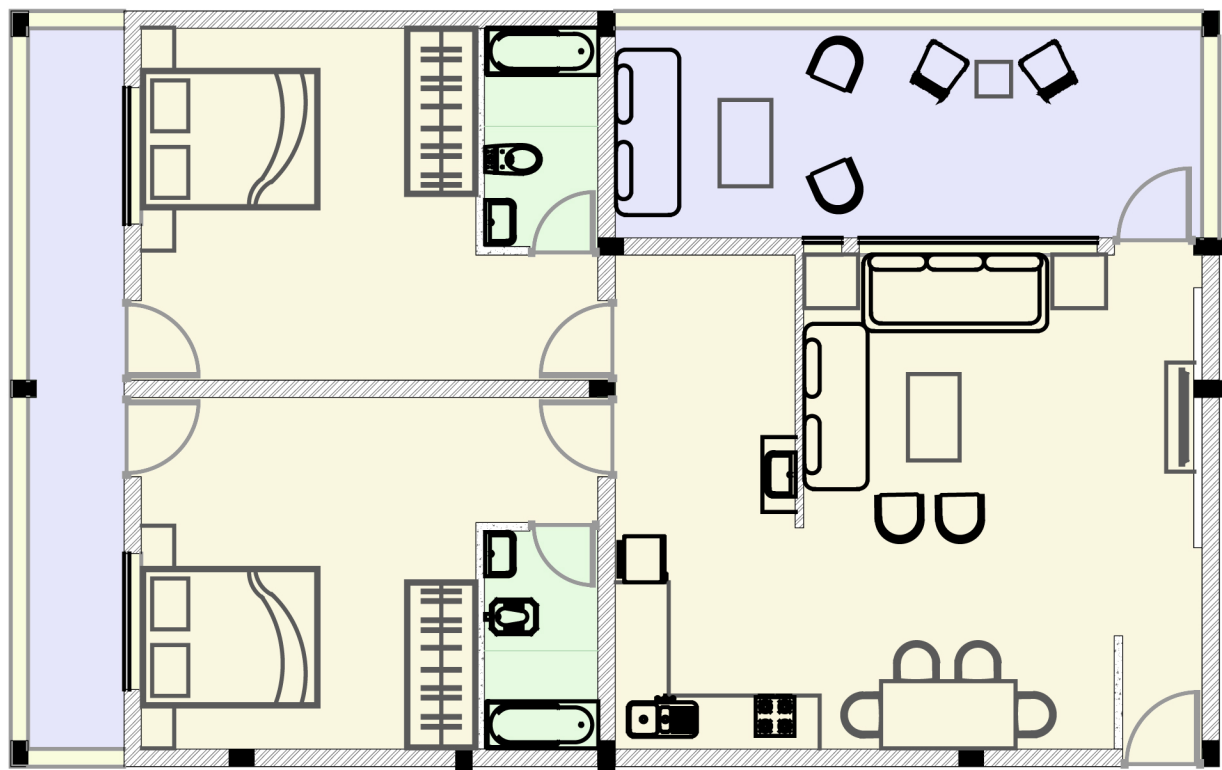


Conceptual sketch 1:1000 scale

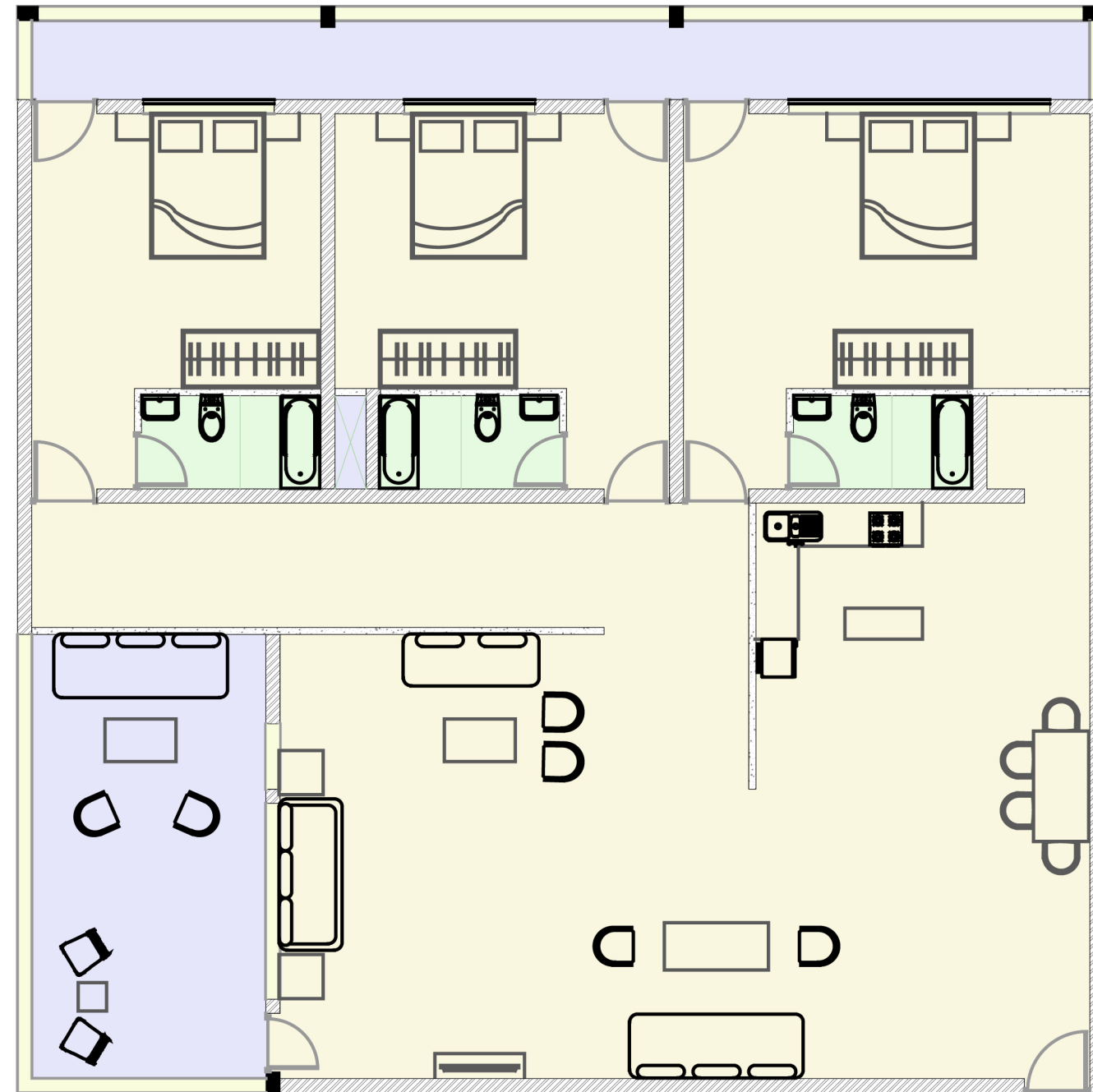


The plot is 100*100m in dimensions. The roads to the south and the west of the site are 18 m wide. The design has been done according to regulations as per GDCR and NBC.

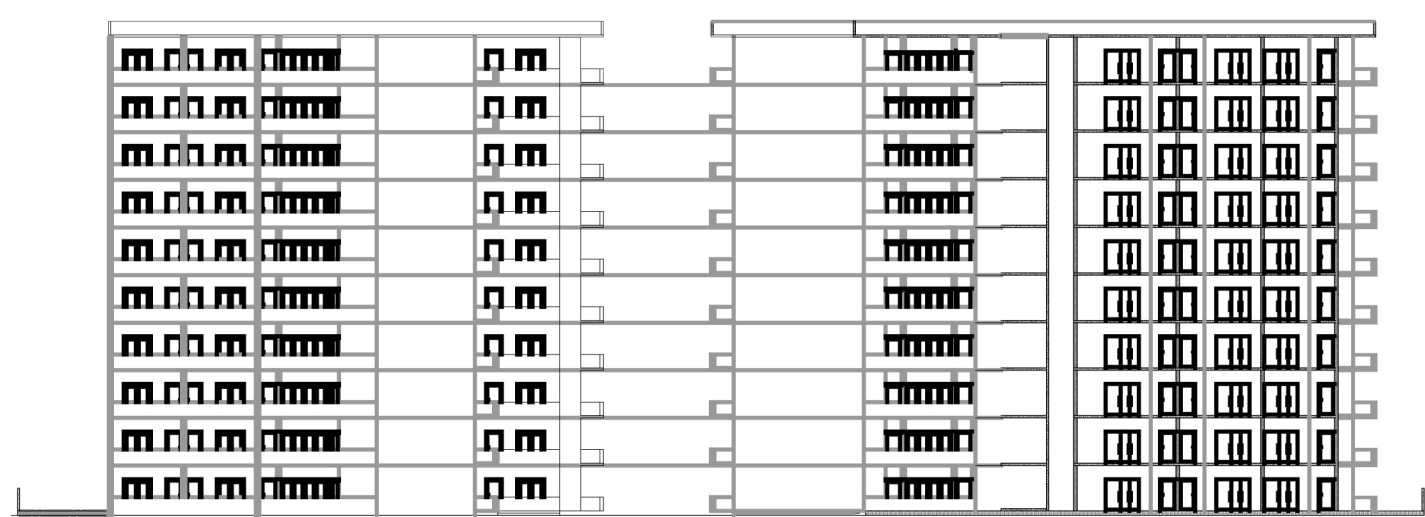
The site has two kind of unit plans which are 2bkh and 3bkh respectively. The two wheelar parking for visitors is on the ground and car parking is underground. Additionally semi open terraces has been given which is the part of total f.s.i.



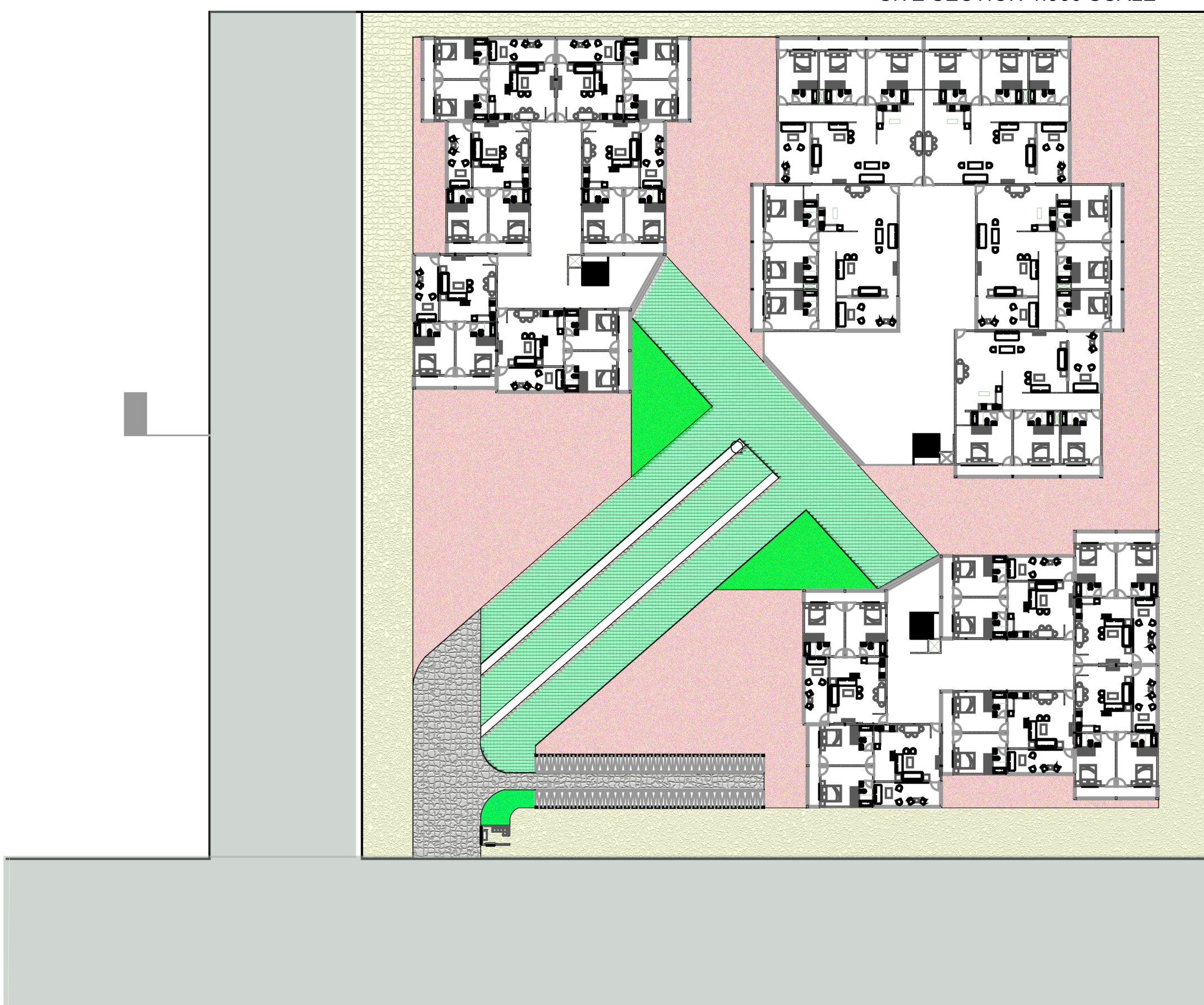
2BHK UNIT PLAN
SCALE 1:100



3BHK UNIT PLAN
SCALE 1:100



SITE SECTION 1:500 SCALE



SITE PLAN 1:500 SCALE

