

# A HOUSING PROPOSAL ON SCIENCE CITY ROAD

Plot Size: 7600 sq.mt

Zone: R2

Permissible F.S.I.: 1.8

Used FSI: 1.7

Carpet area: 9946 sq.m

Built up area: 10940.6 sq.m

Super built up area: 14209.34 sq.m

## Block TYPE A

2types of 3BHK apartments

No.of floors: 12

No.of units: 48

Carpet area: 170.89 m<sup>2</sup>; 173.12 m<sup>2</sup>

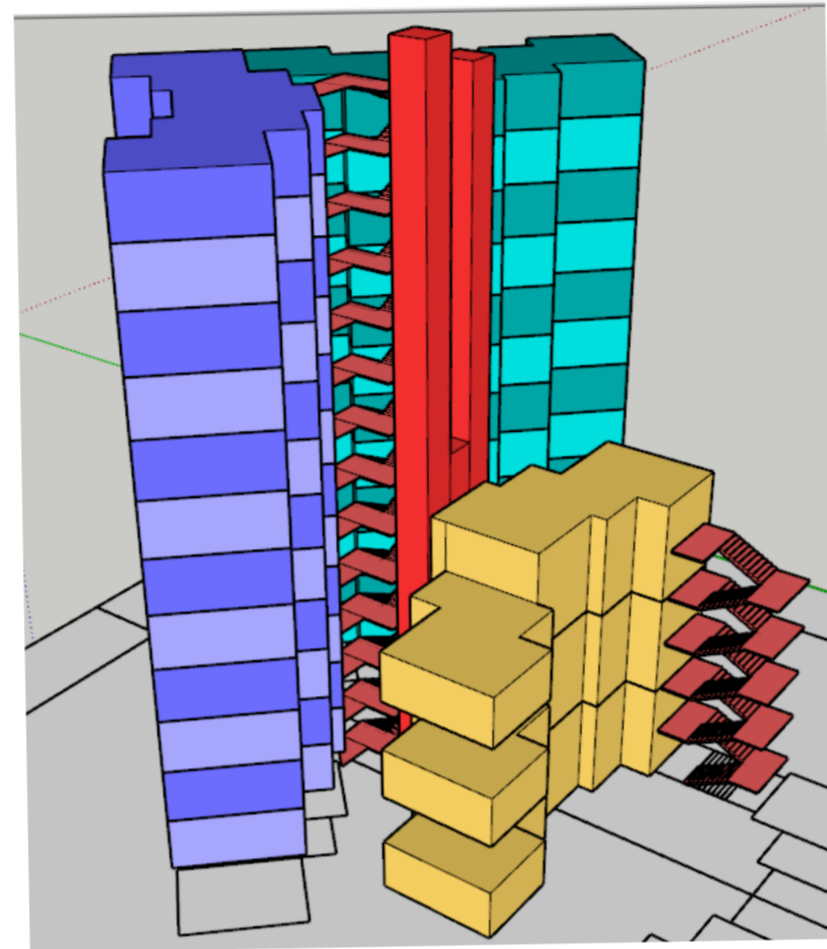
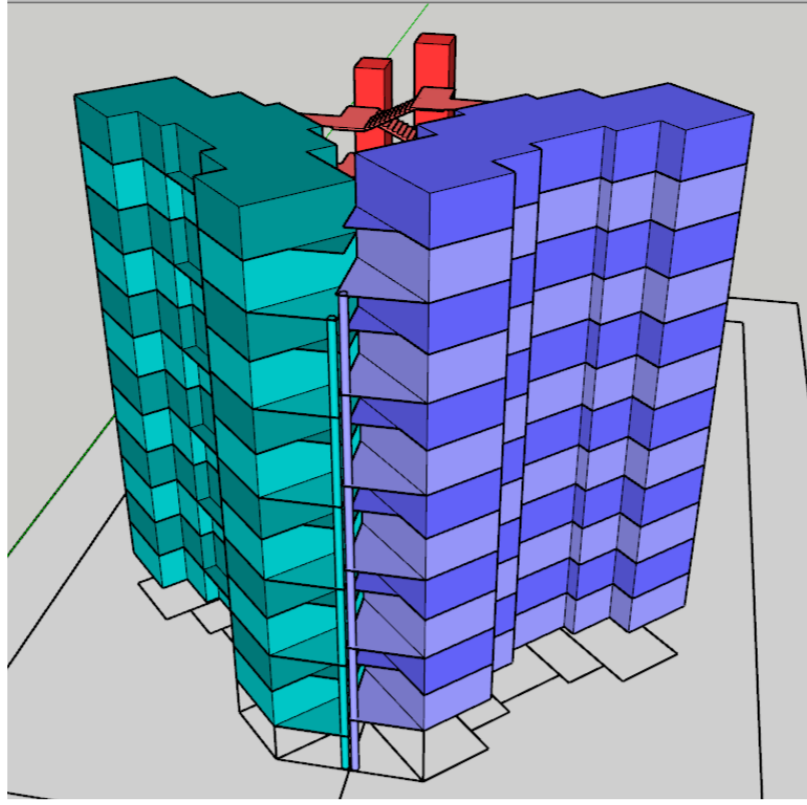
## Block TYPE B

4BHK double level apartments

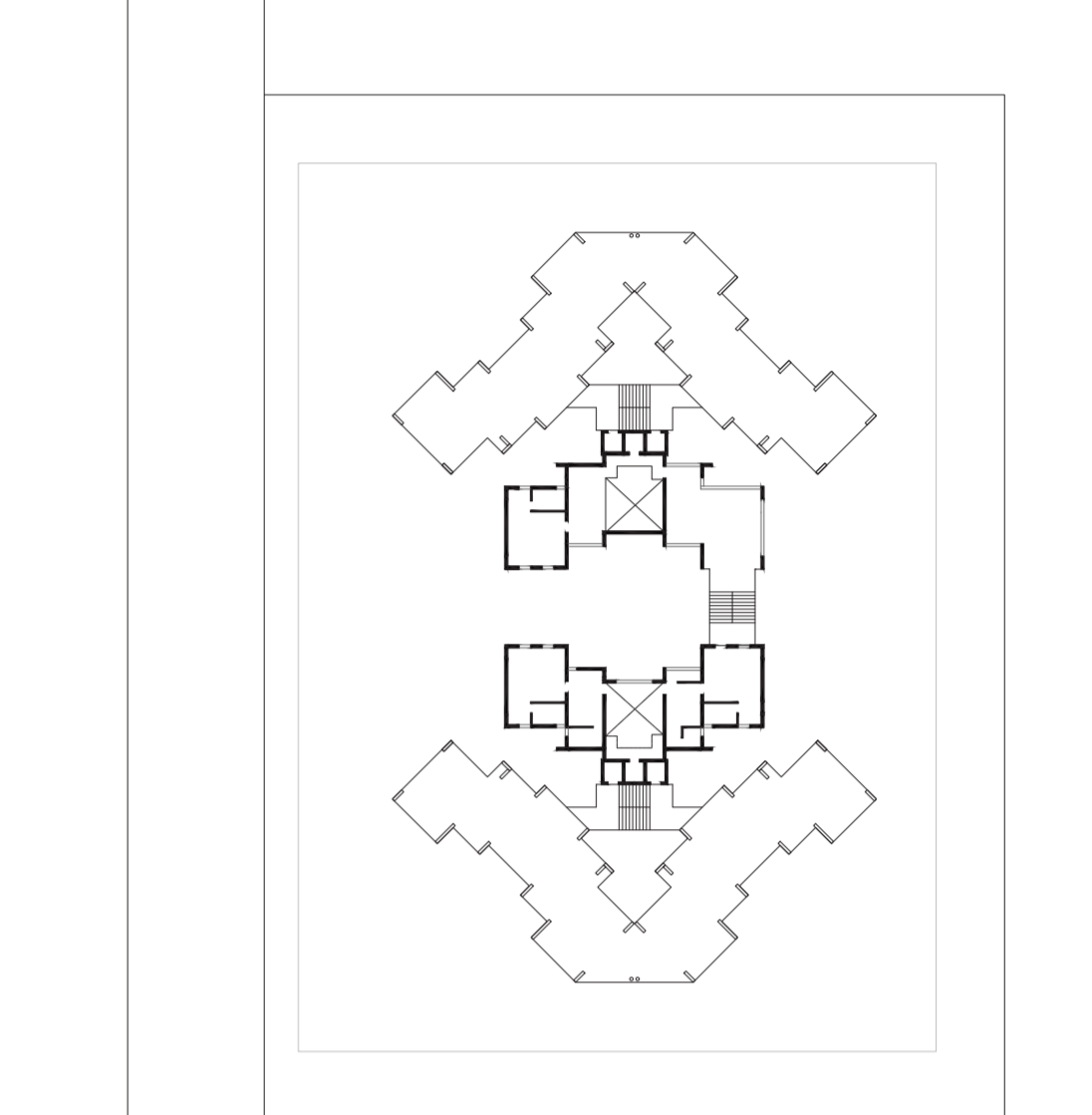
No.of floors: G+5

No.of units: 6

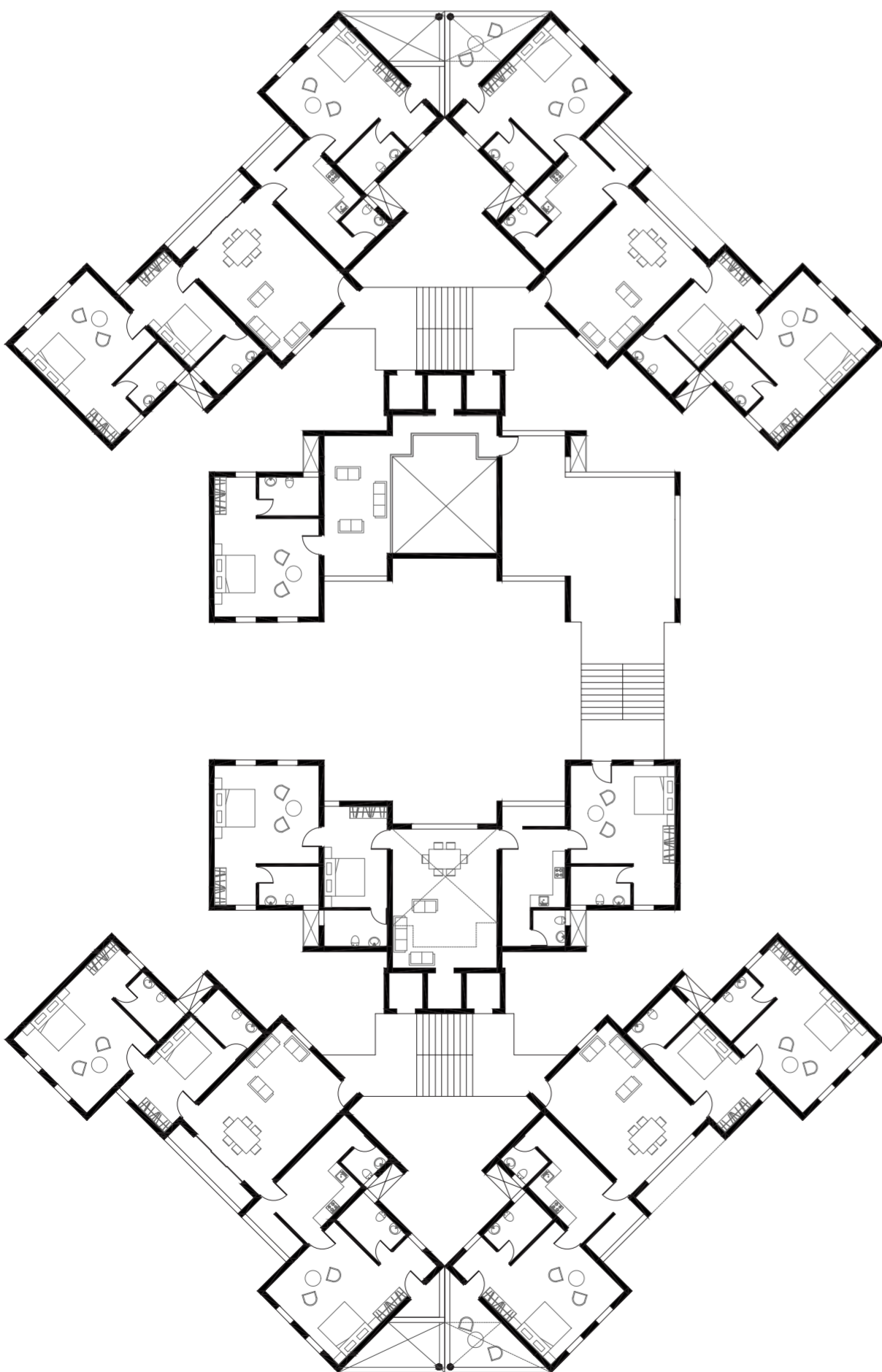
Carpet area: 284.59 m<sup>2</sup>



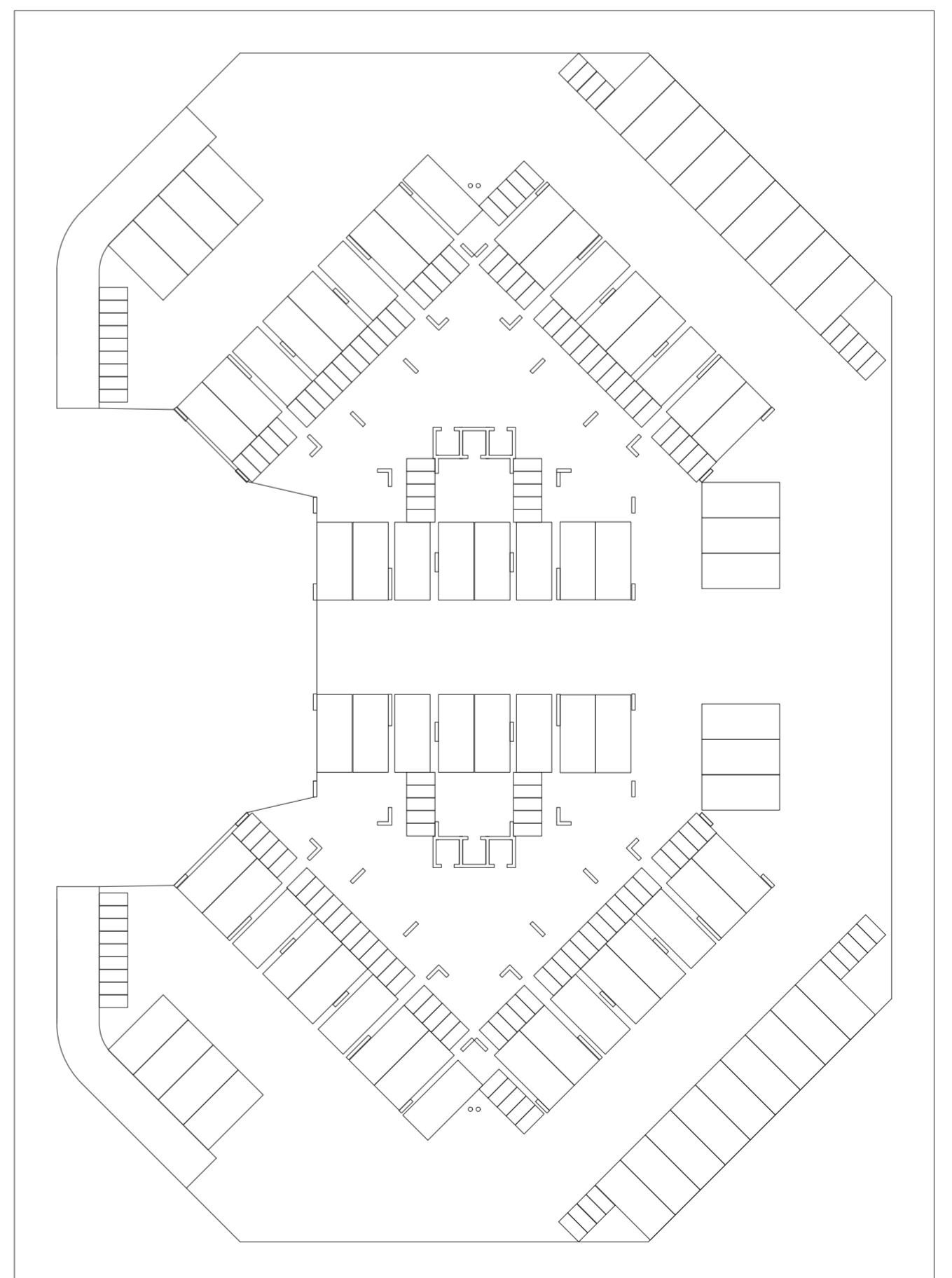
Ground level plan



Typical floor plan

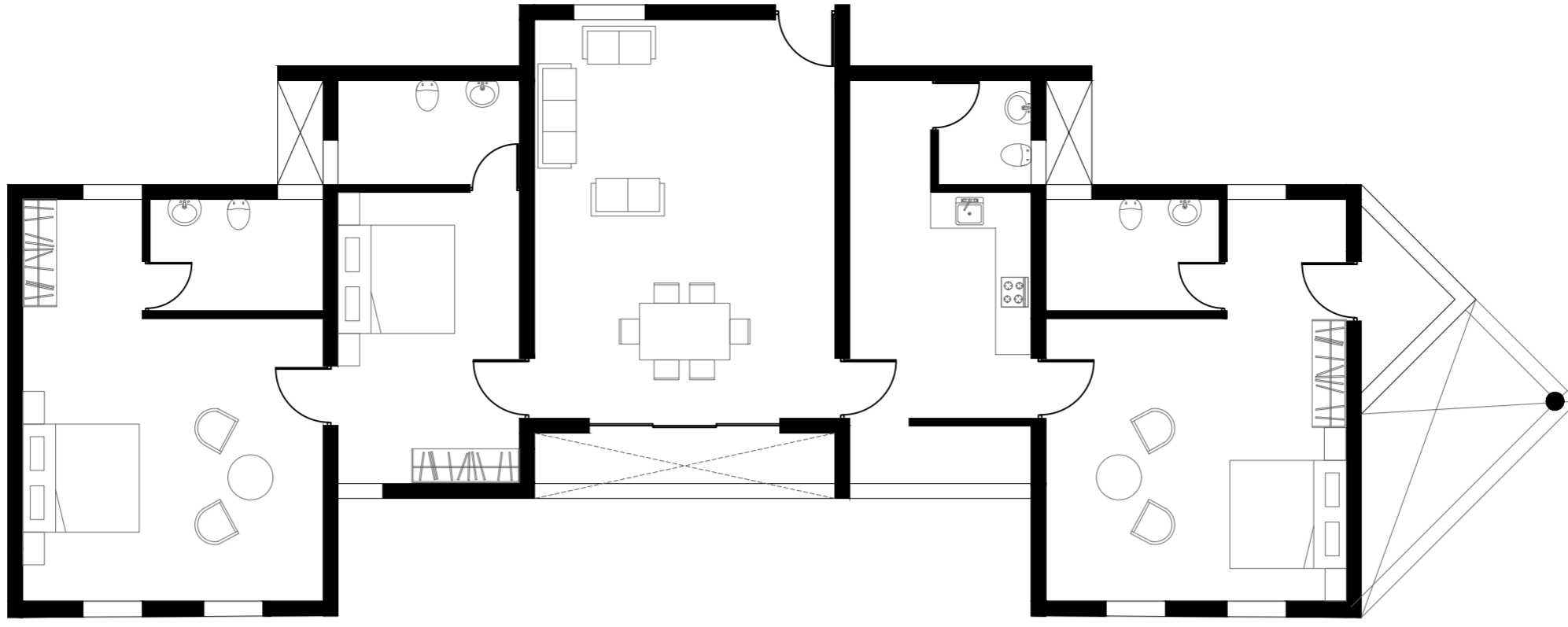


Basement plan

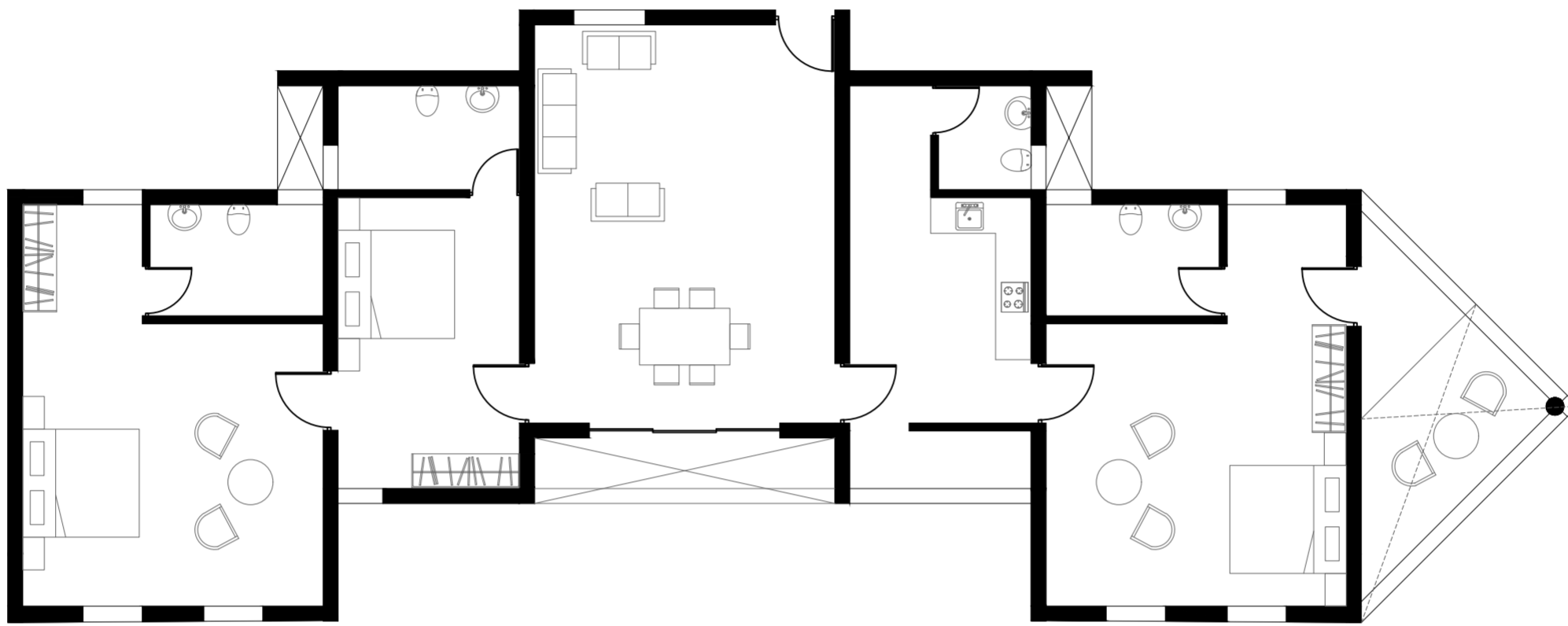


Types of units

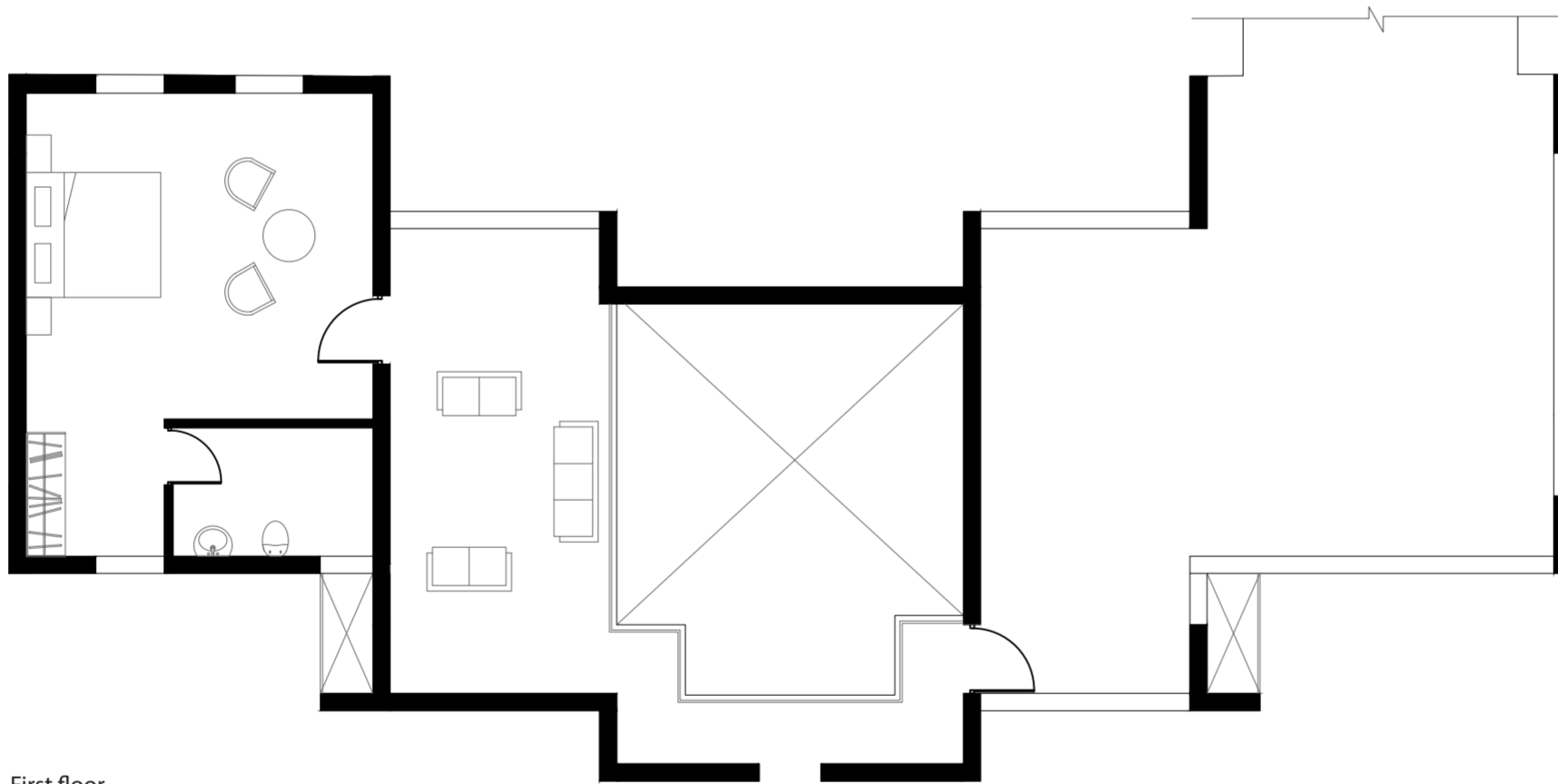
Block A  
3BHK type 1



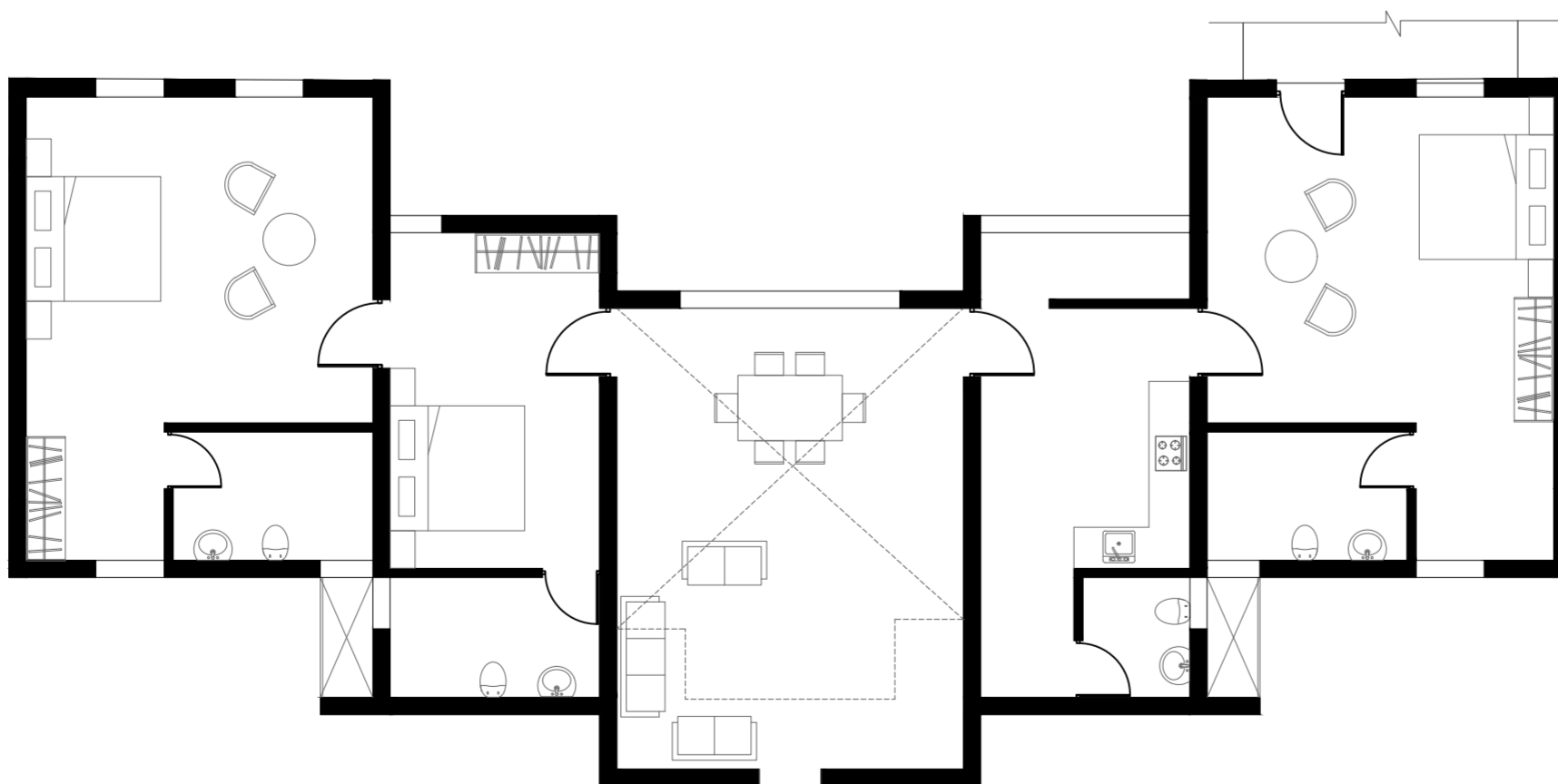
Block A  
3BHK type 2



Block B  
4BHK



First floor



Ground floor

Process

