

HOUSING SCHEME NEAR SCIENCE CITY ROAD

Plot Size: 5850 sq.mts

FSI: 1.8

Ground cover (Max. 50%): Used only 2760 sqm

Max. permissible FSI area: 10530 sqm

Used FSI area: 7842 sqm

Building height: 18 mts - 6 floors (Max. permissible 45mts)

Margins (all sides): 6 mts

Total Super-Builtup area: 17172 sqm

Total number of units: 40 (5 types - each 8)

Units Areas: T1 - 190 sqm; T2 - 250 sqm; T3 - 200 sqm; T4 - 230 sqm; T5-220 sqm.

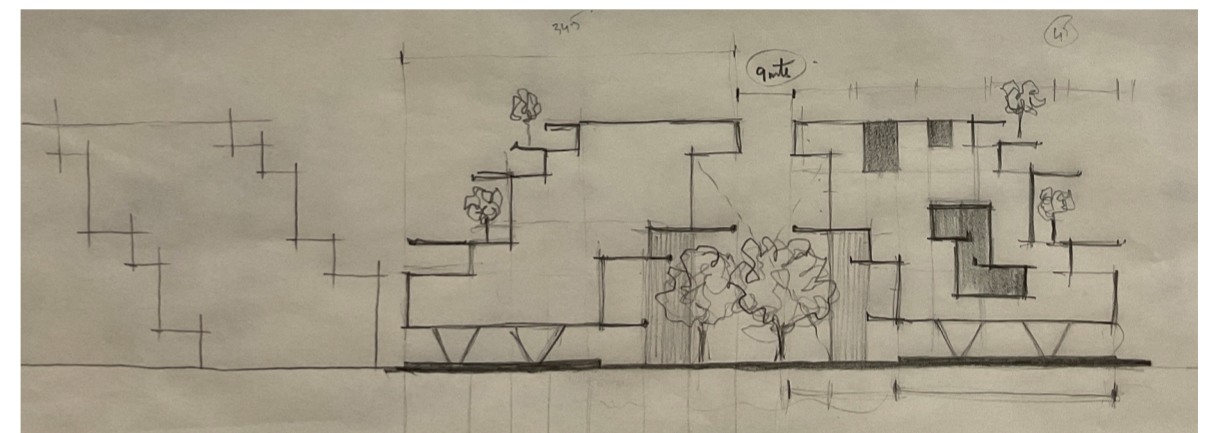
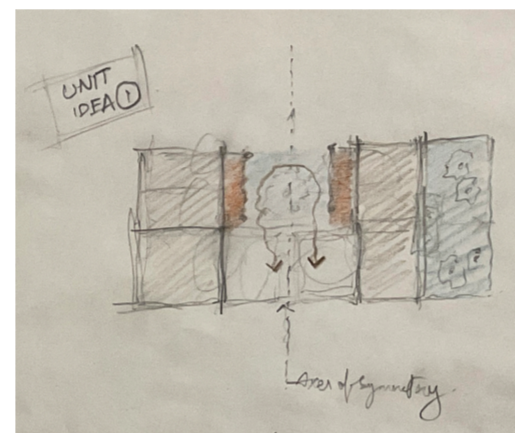
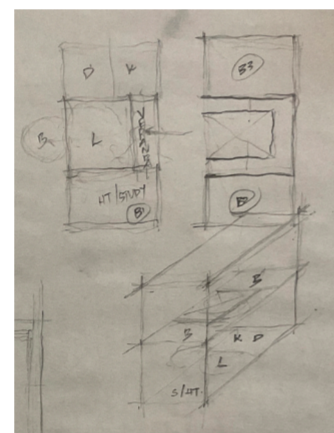
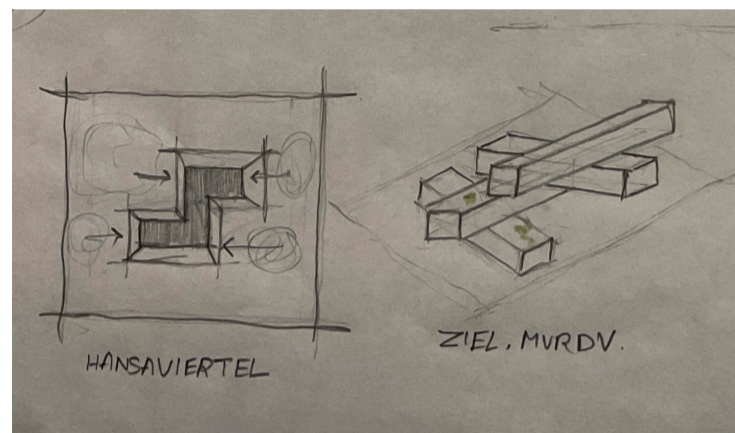
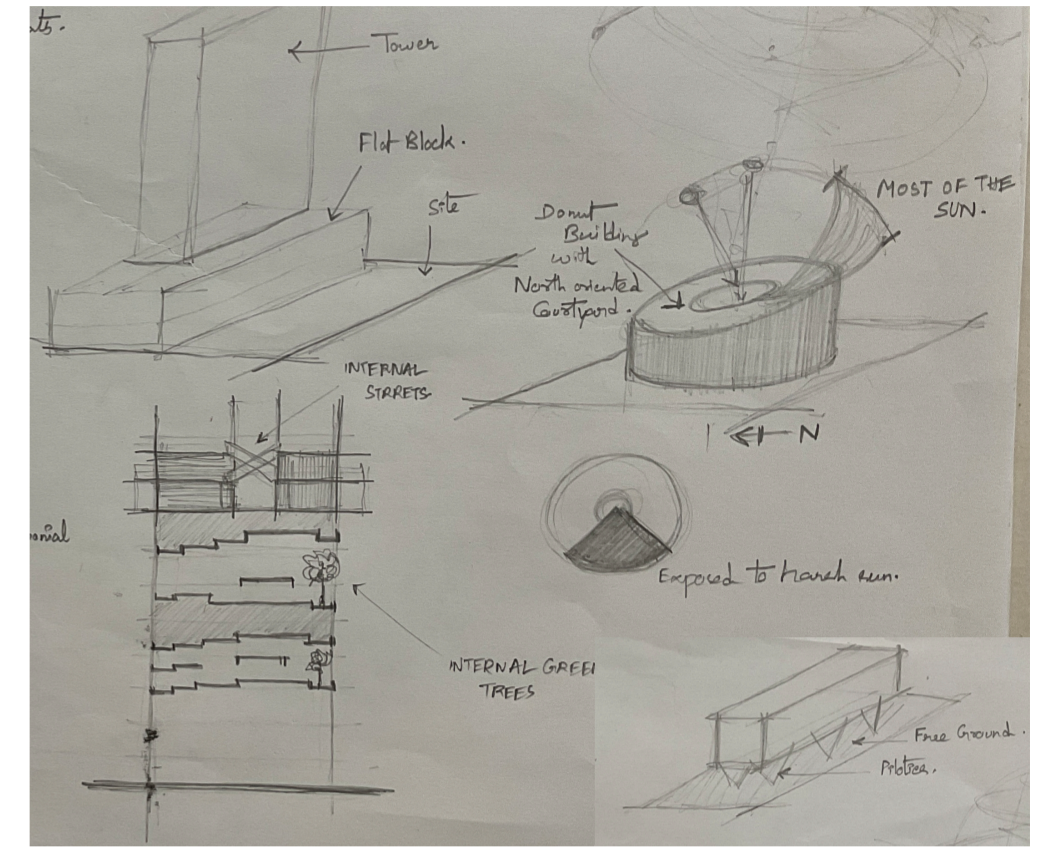
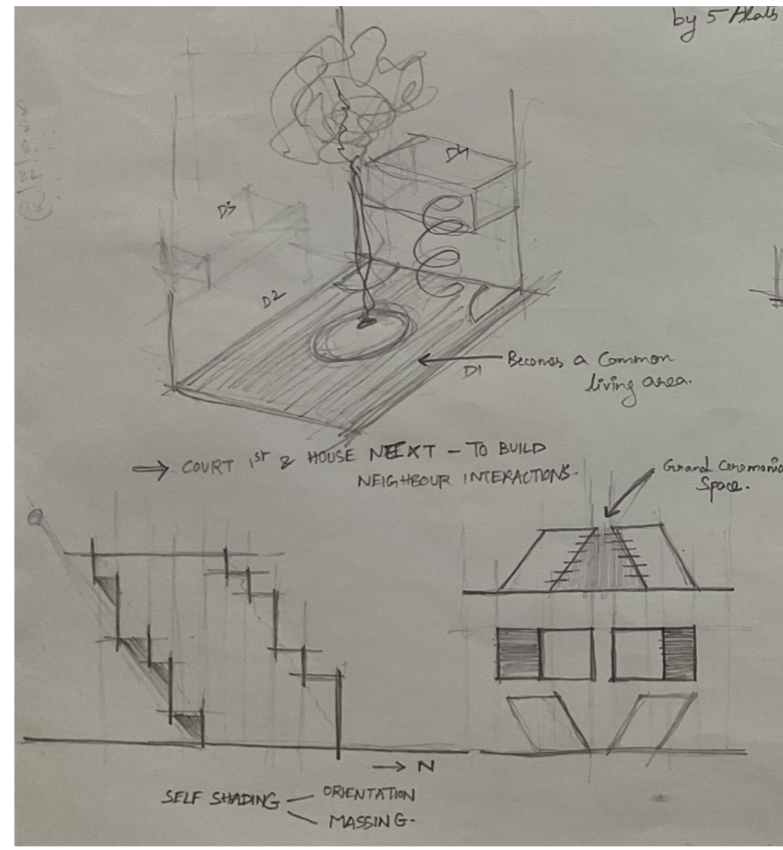
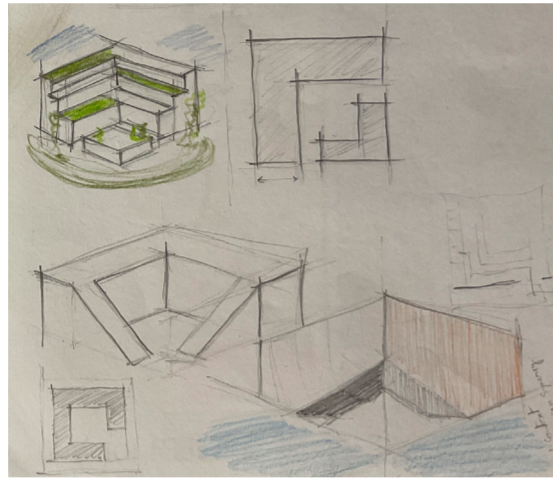
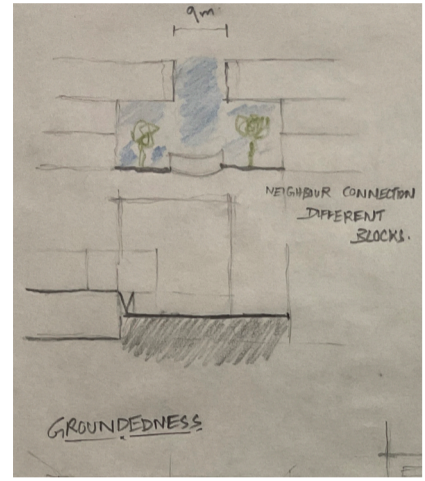
CONCEPTUAL SKETCHES

GROUNDNESS:

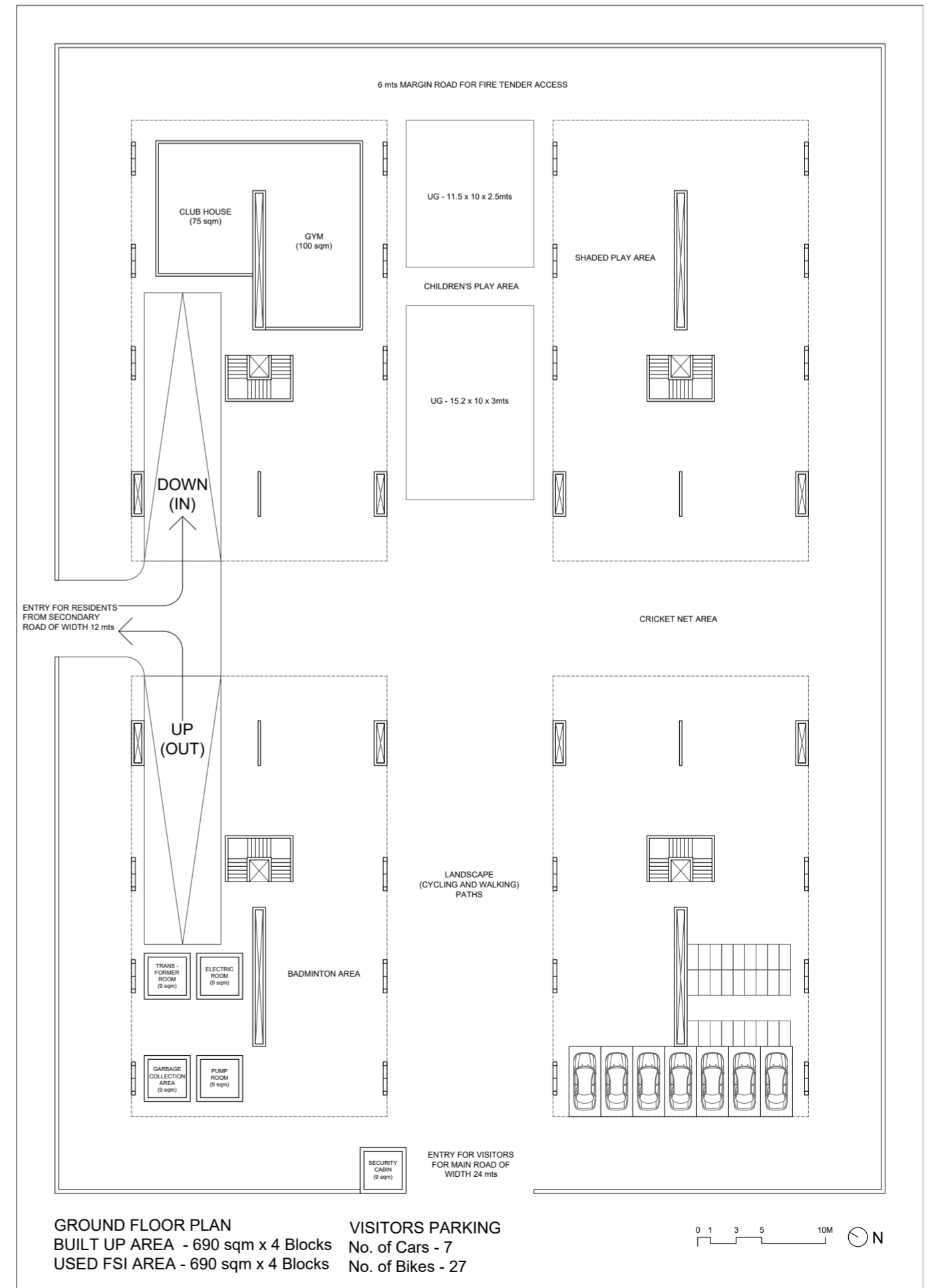
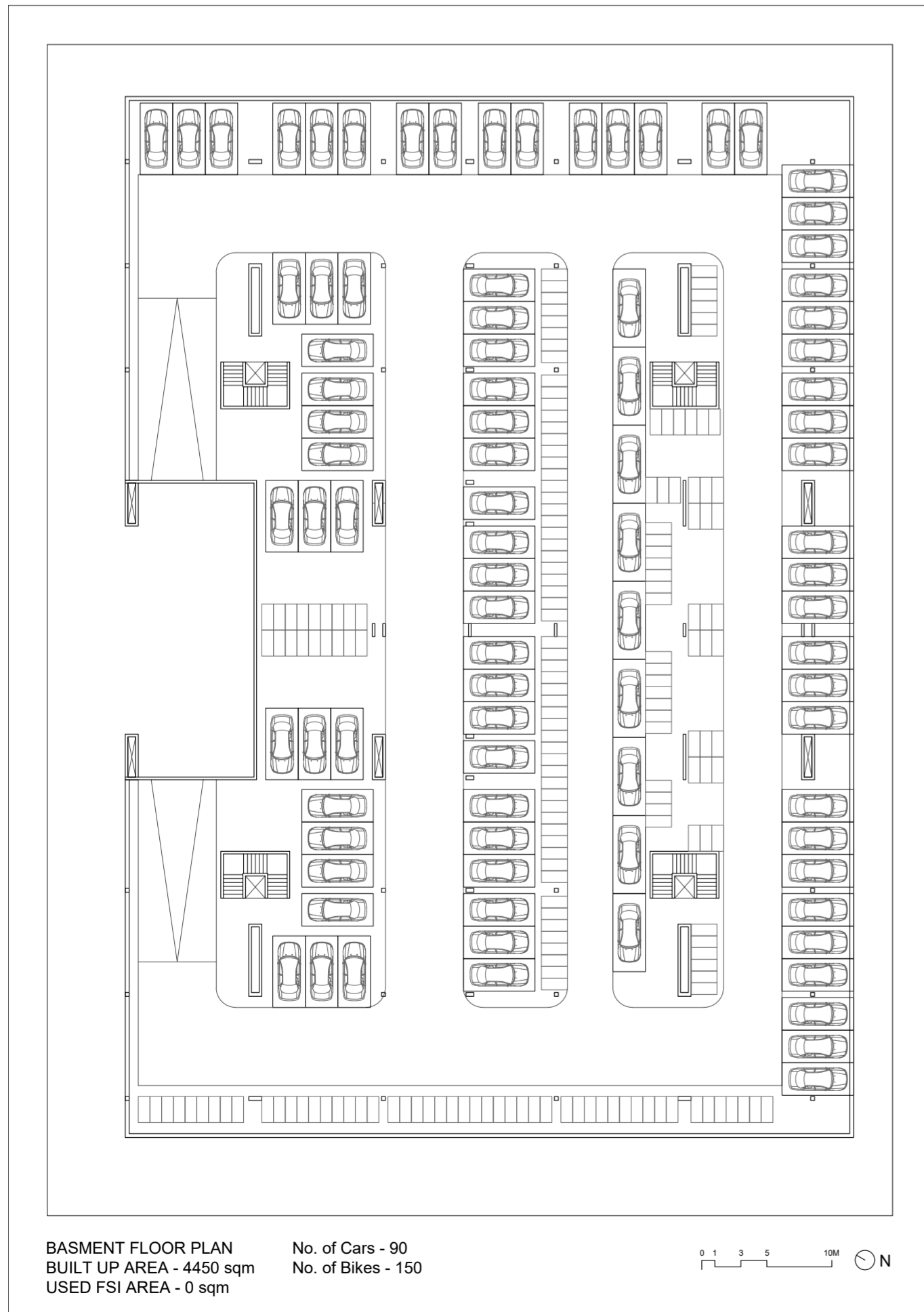
- Greenary
- Spillout spaces
- Neighbourly Interactions
- Maze like circulation

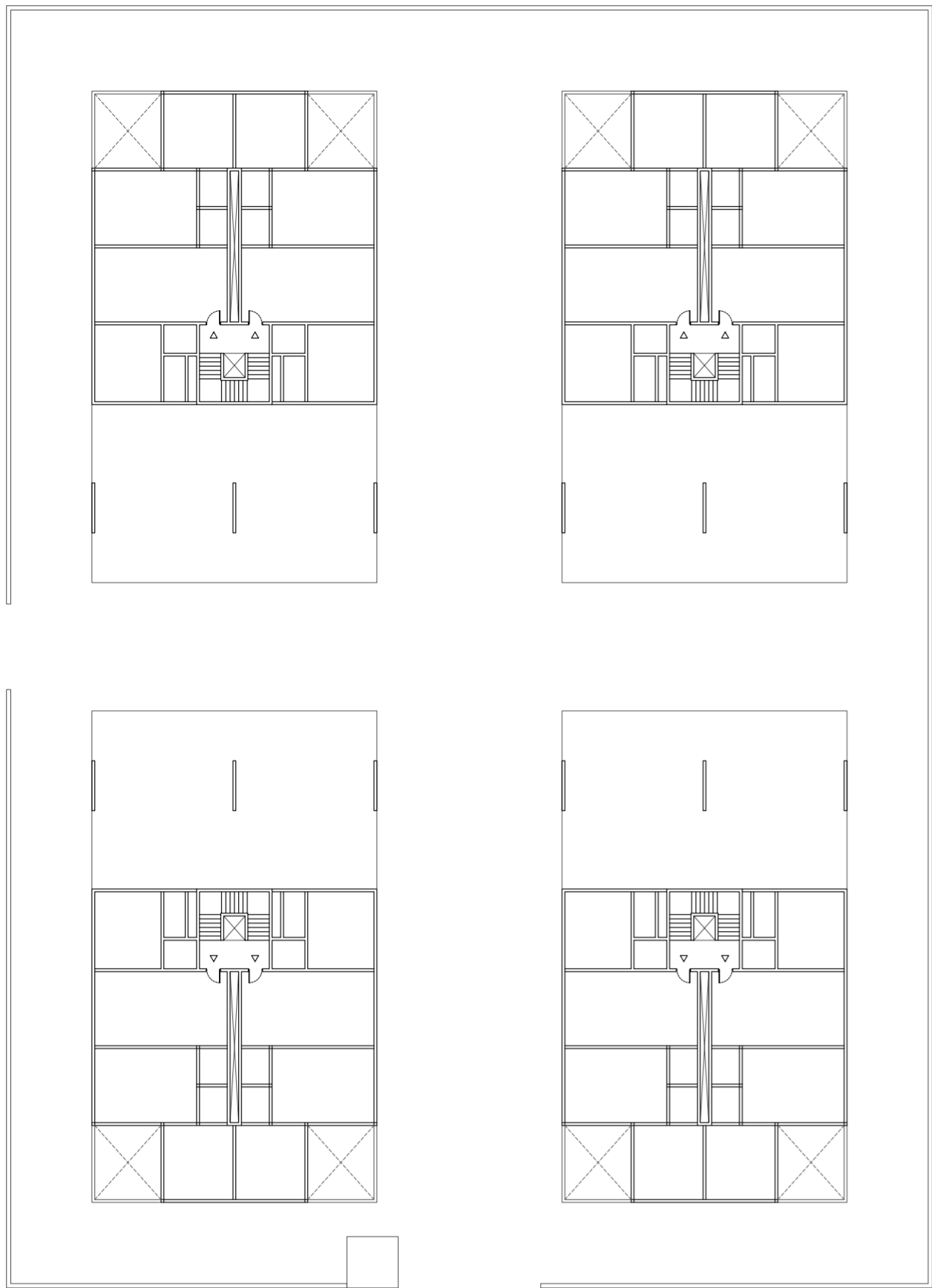
FLEXIBILITY:

- Slack space
- Sliding doors and walls
- Multi spatial functions defining the luxury

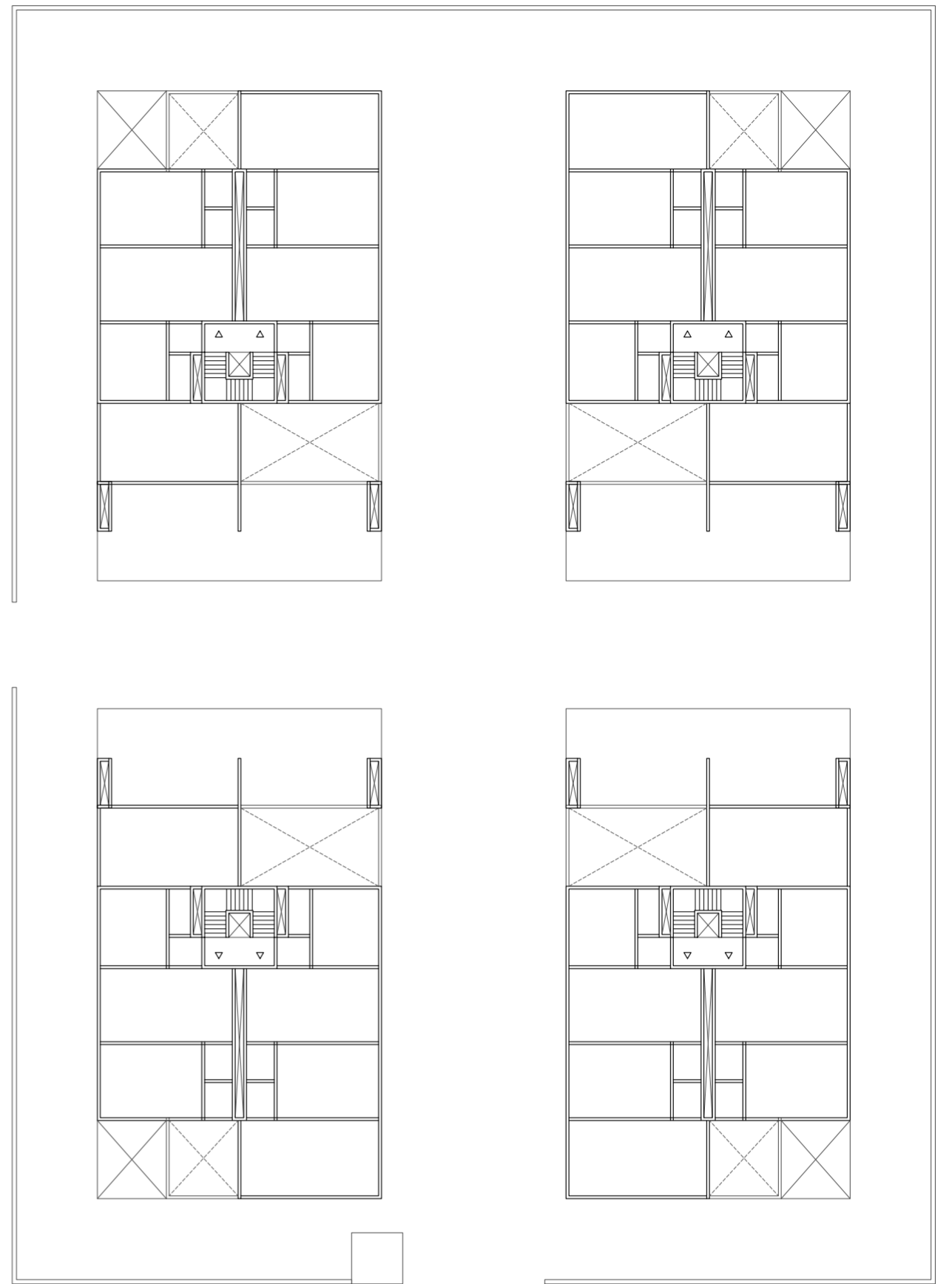


DRAWINGS

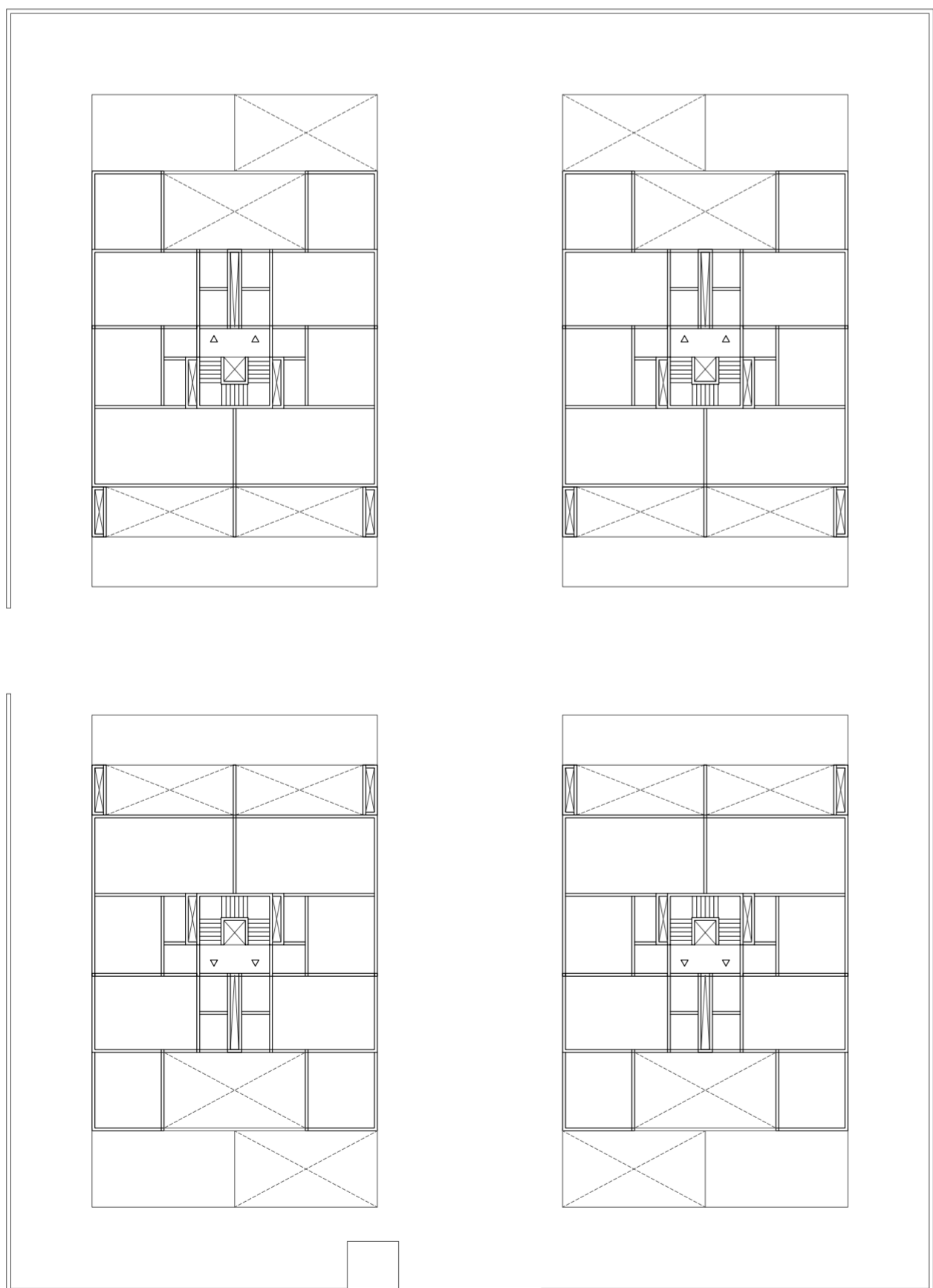




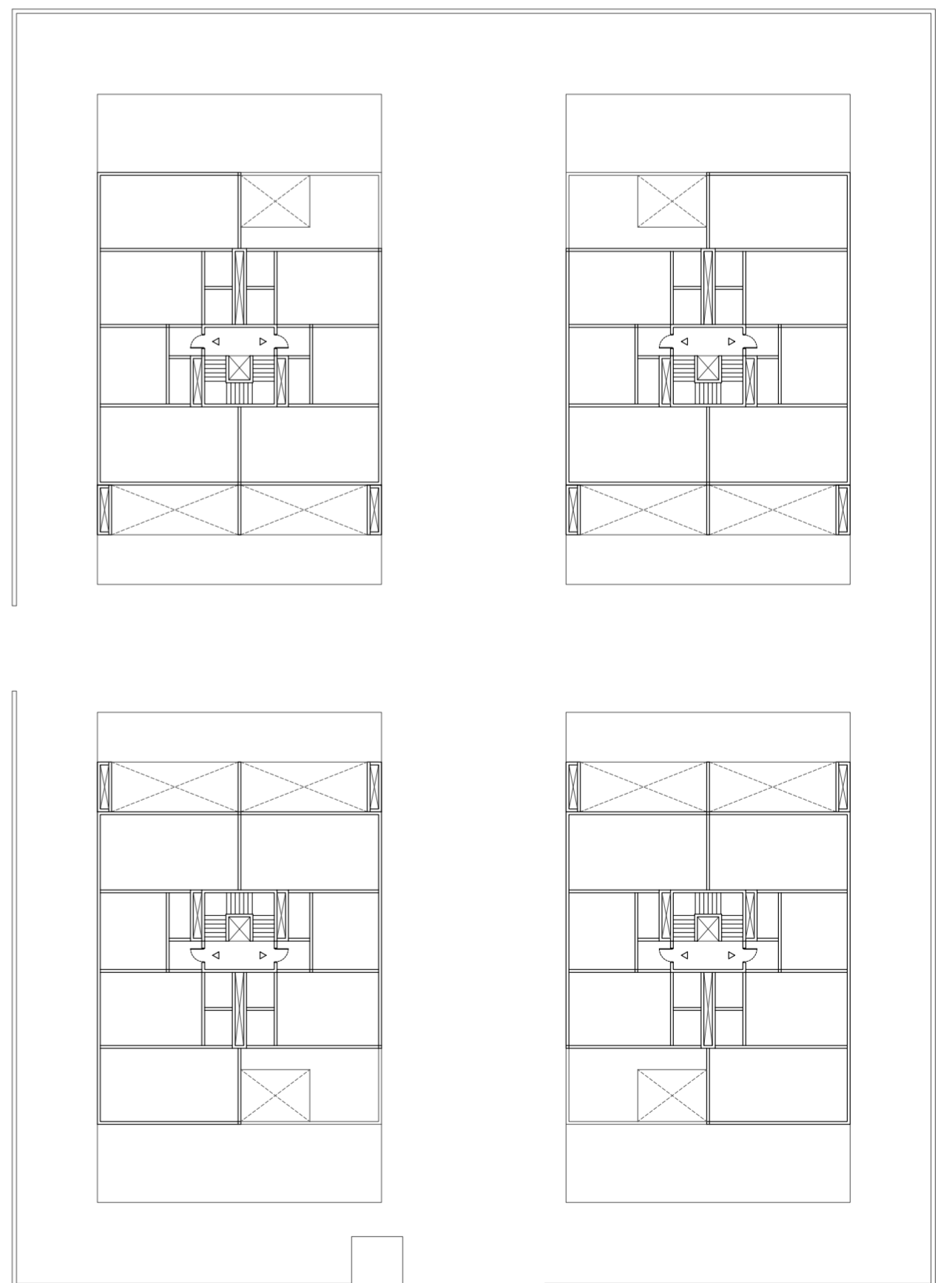
FIRST FLOOR PLAN
 BUILT UP AREA - 440 sqm x 4 Blocks
 USED FSI AREA - 372 sqm x 4 Blocks



SECOND FLOOR PLAN
 BUILT UP AREA - 500 sqm x 4 Blocks
 USED FSI AREA - 457 sqm x 4 Blocks

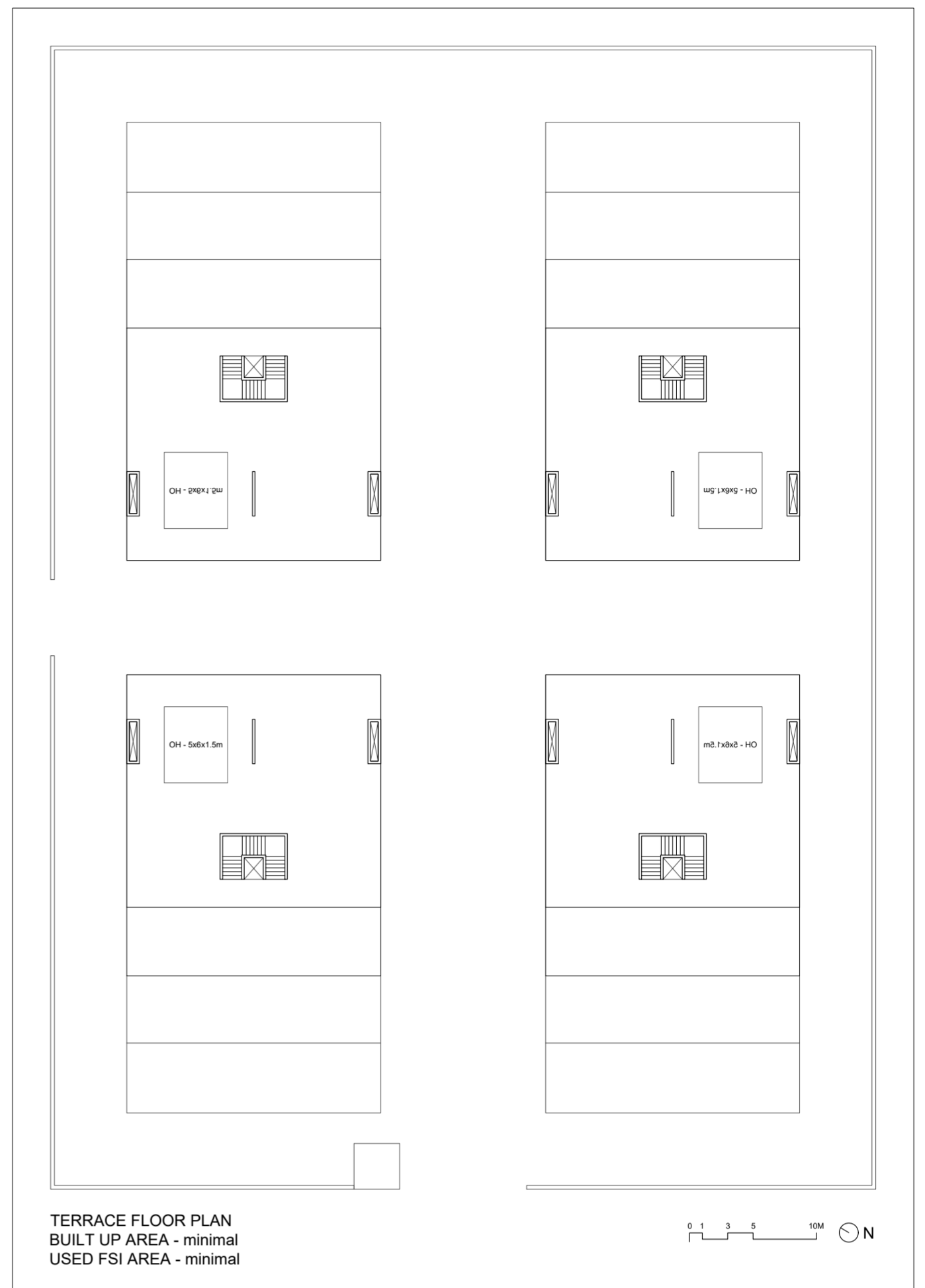
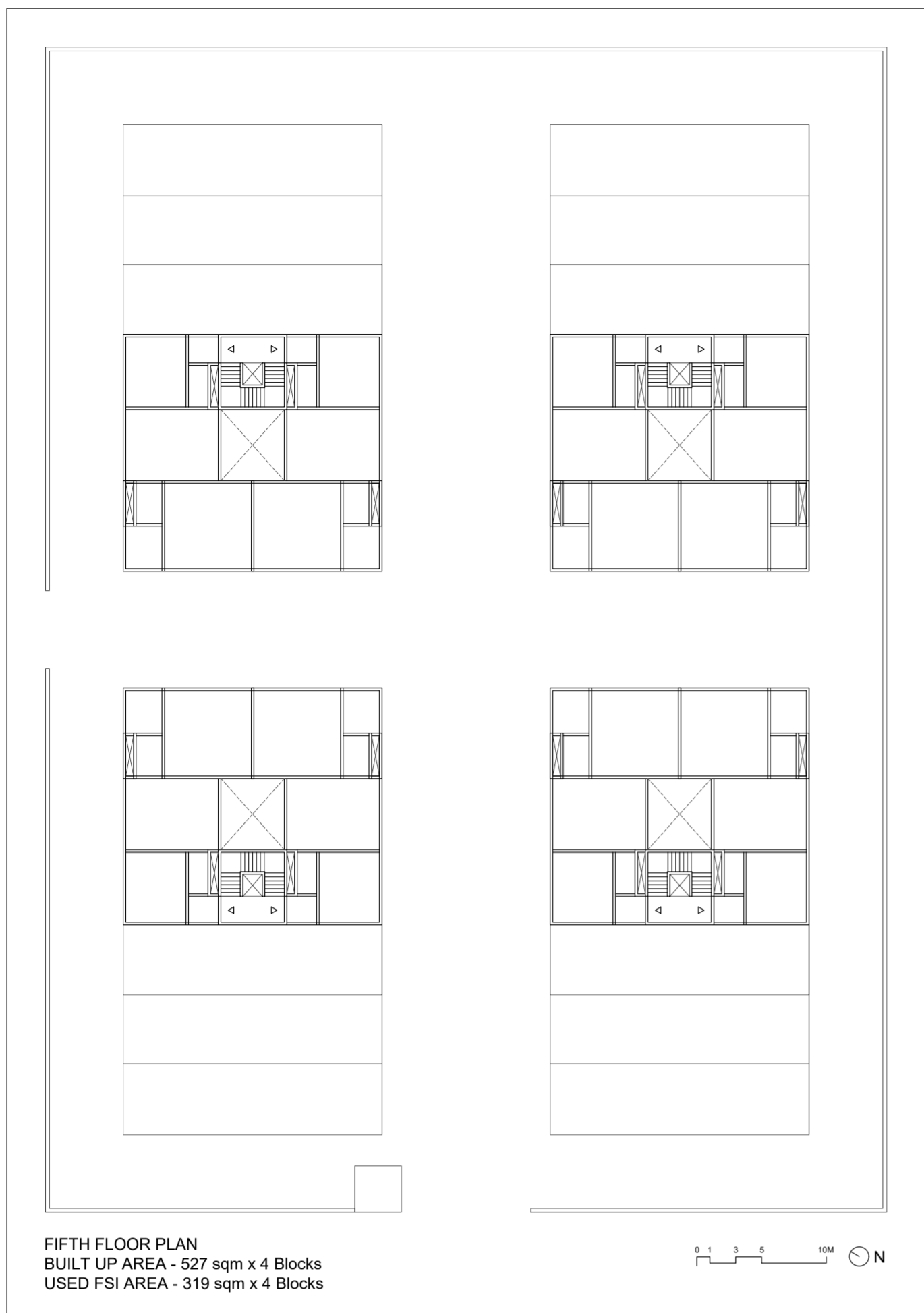


THIRD FLOOR PLAN
 BUILT UP AREA - 566 sqm x 4 Blocks
 USED FSI AREA - 416 sqm x 4 Blocks

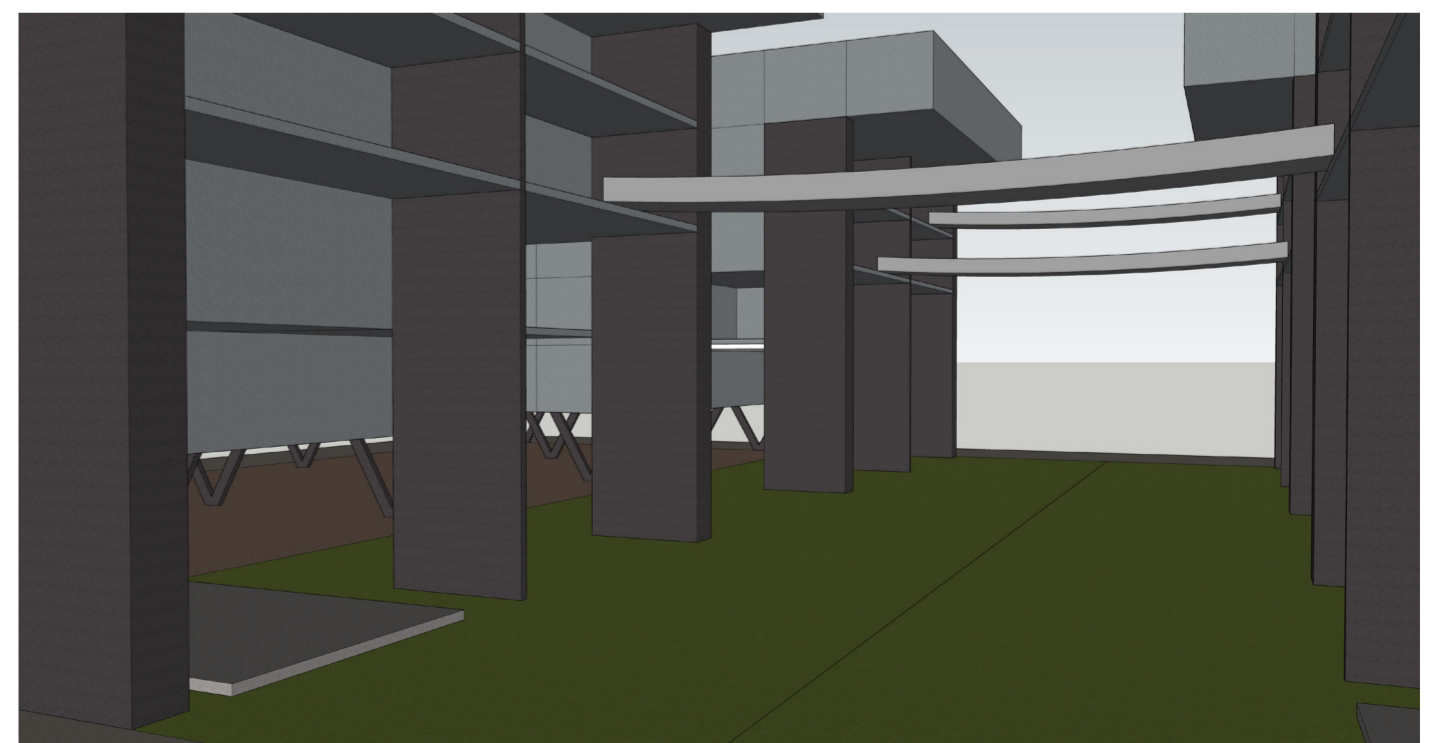
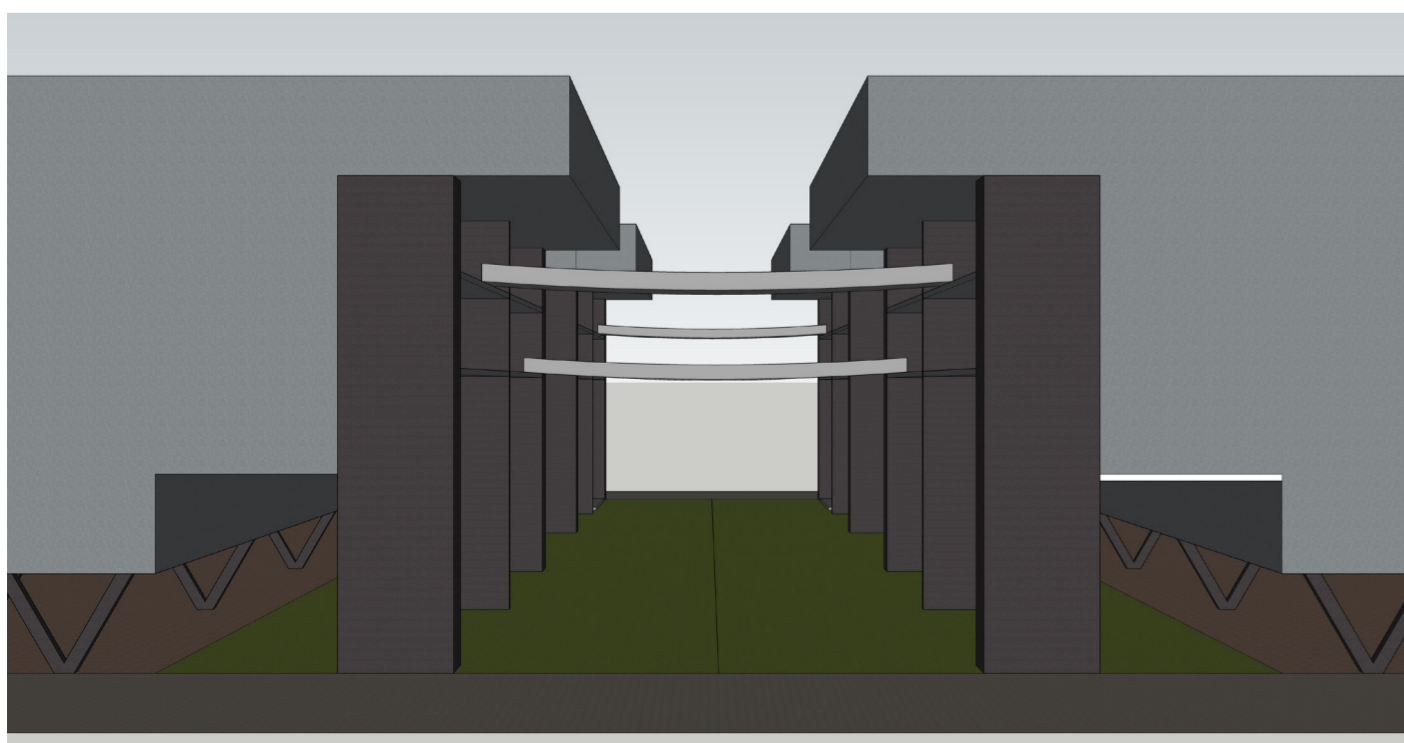
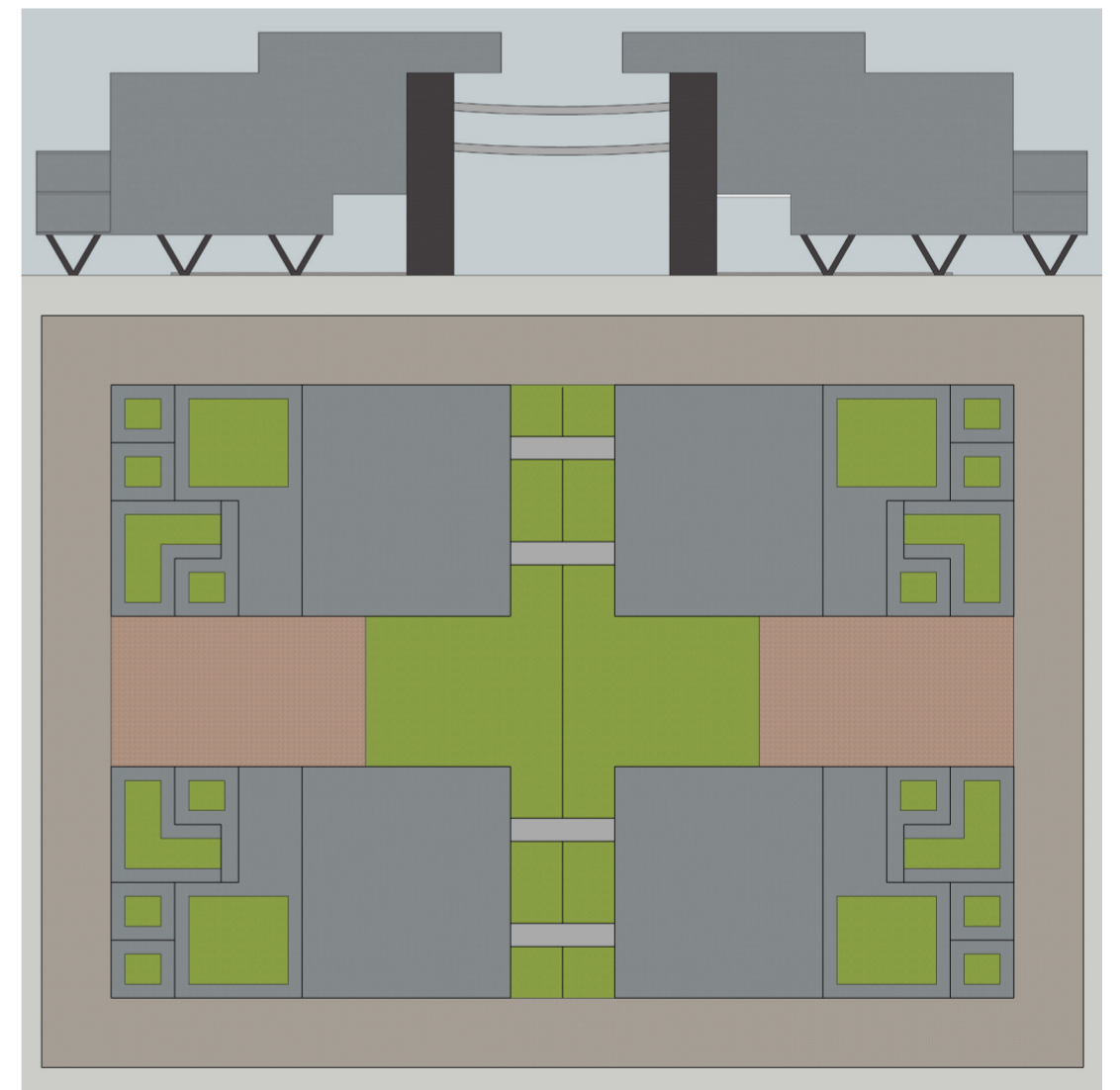
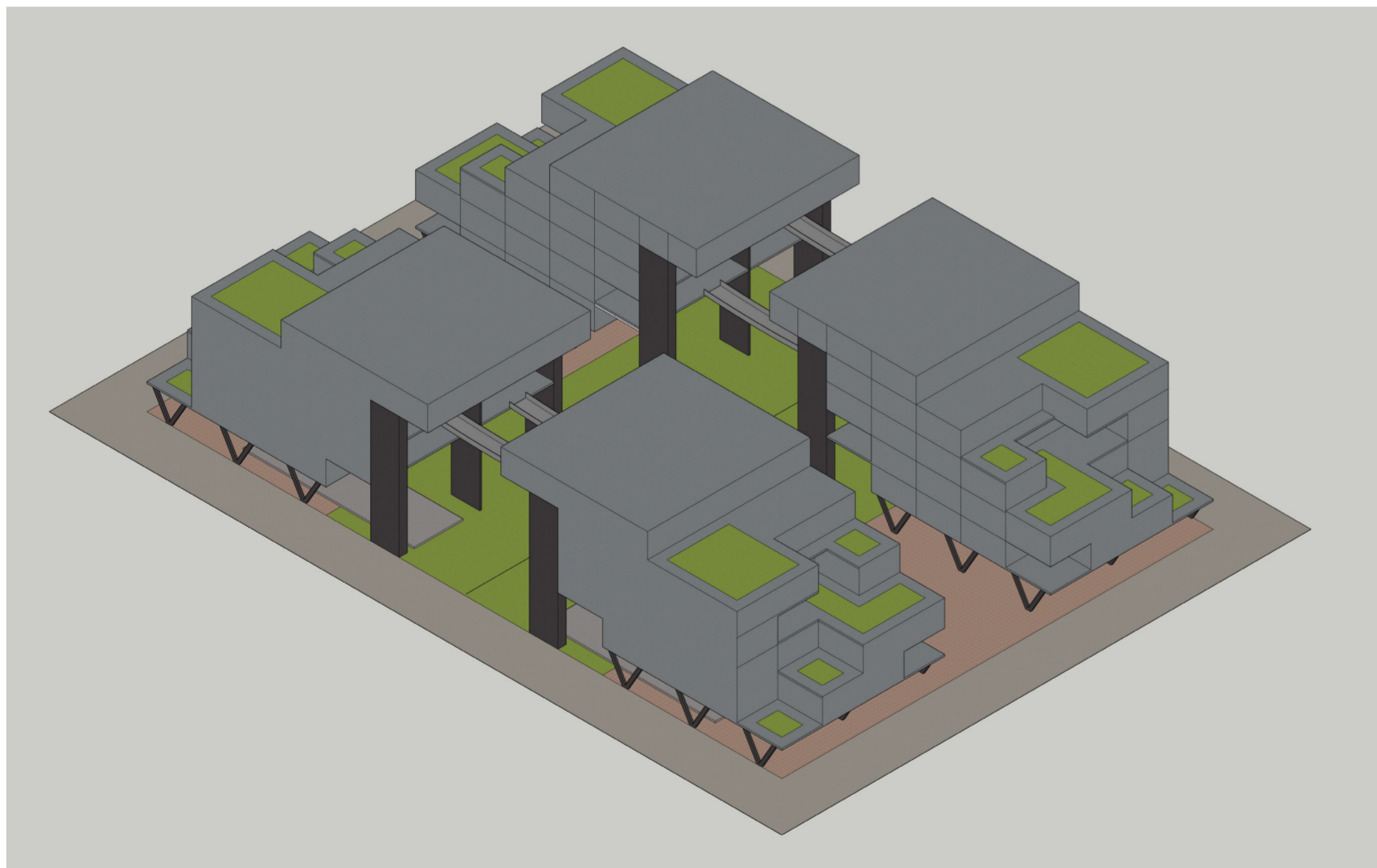


FOURTH FLOOR PLAN
 BUILT UP AREA - 510 sqm x 4 Blocks
 USED FSI AREA - 415 sqm x 4 Blocks

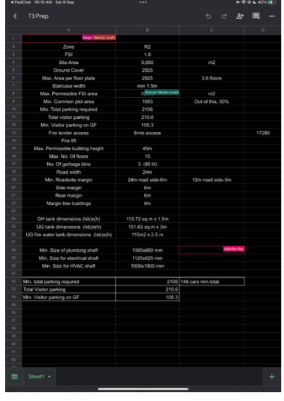




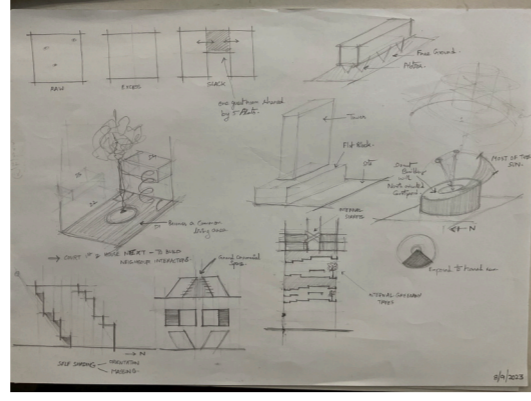
VIEWS



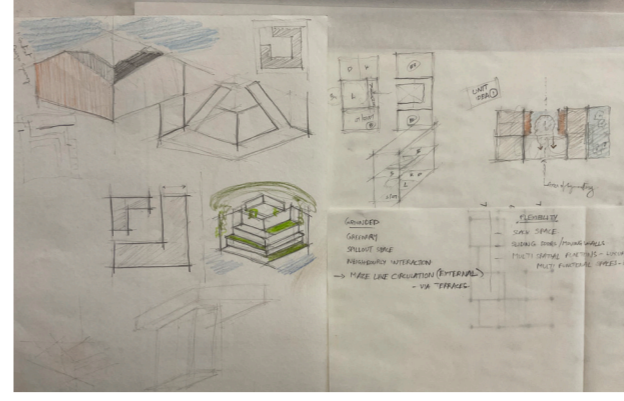
TIME STAMPS



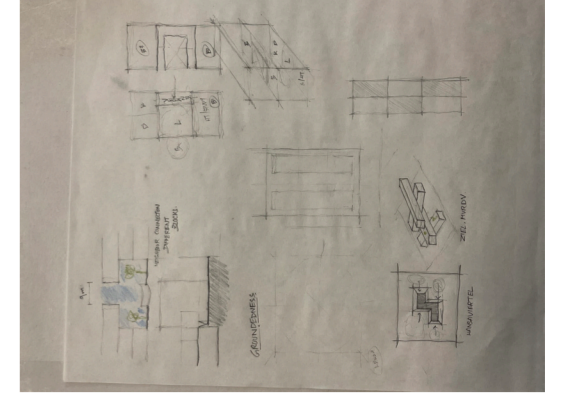
10 AM



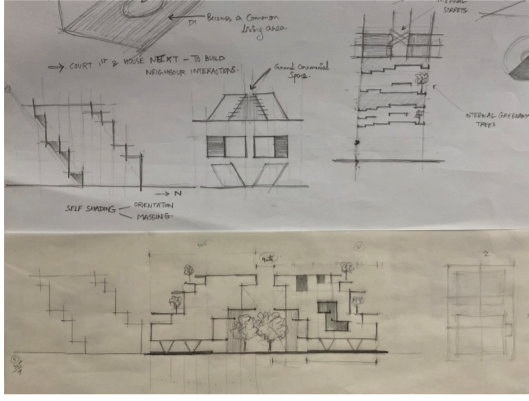
11 AM



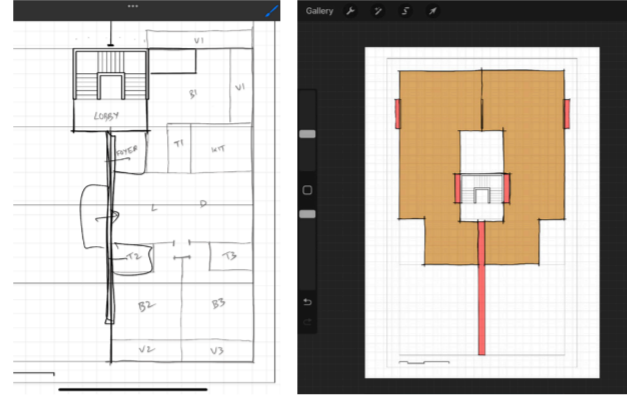
12 AM



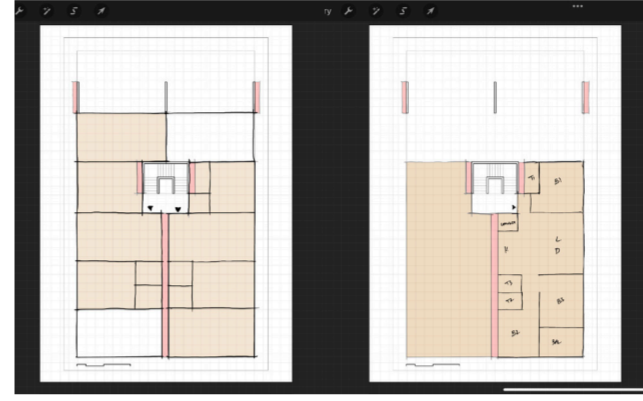
1 PM



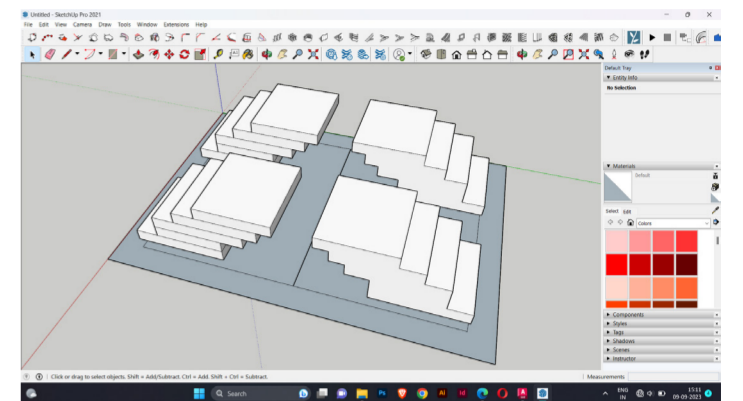
2 PM



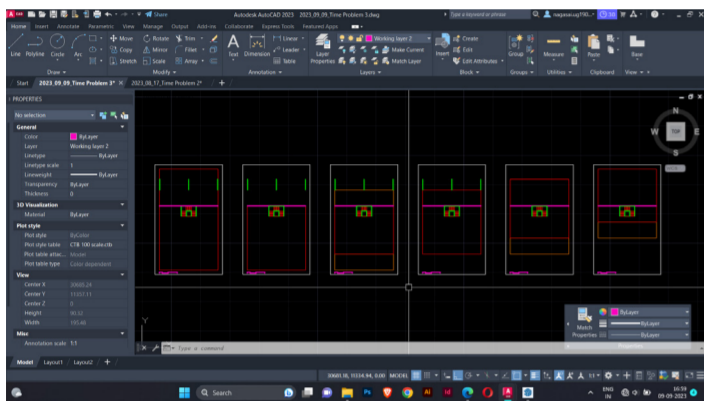
3 PM



4 PM



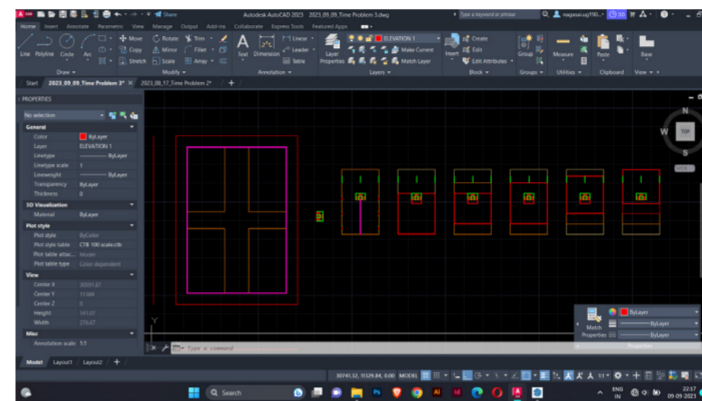
5 PM



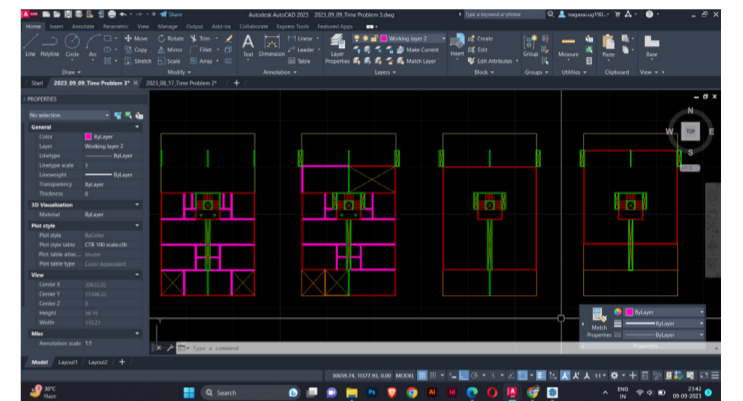
6 PM

BREAK

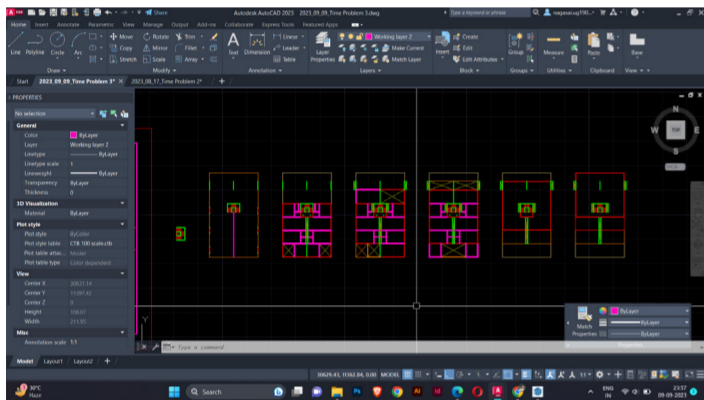
7 PM



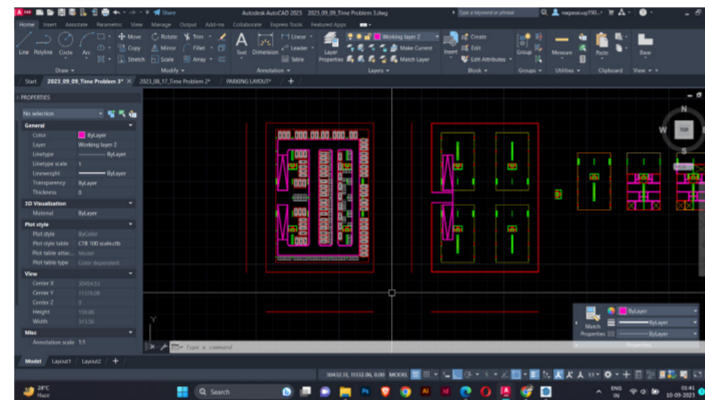
8 PM



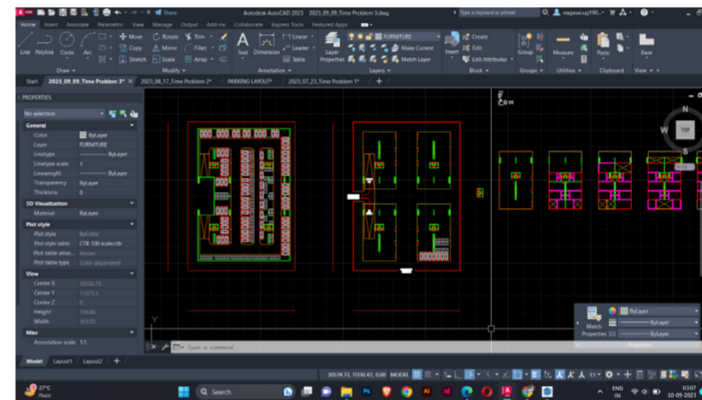
9 PM



10 PM



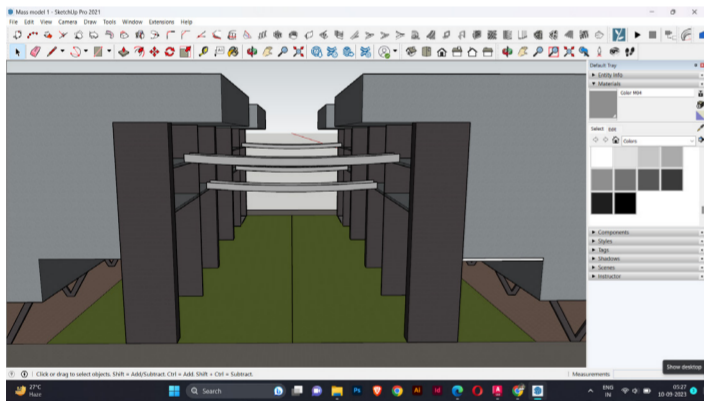
11 PM



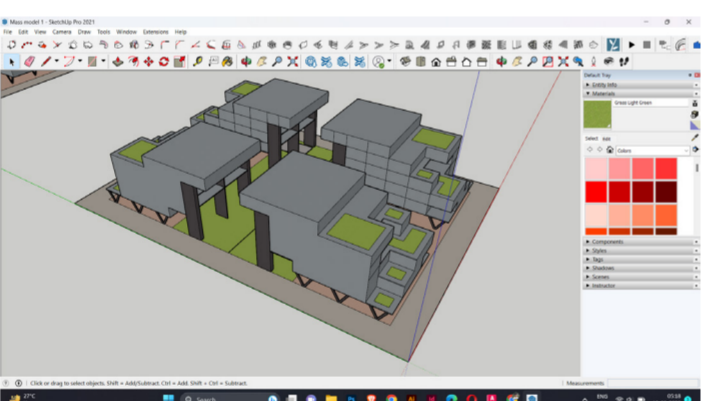
12 PM

BREAK

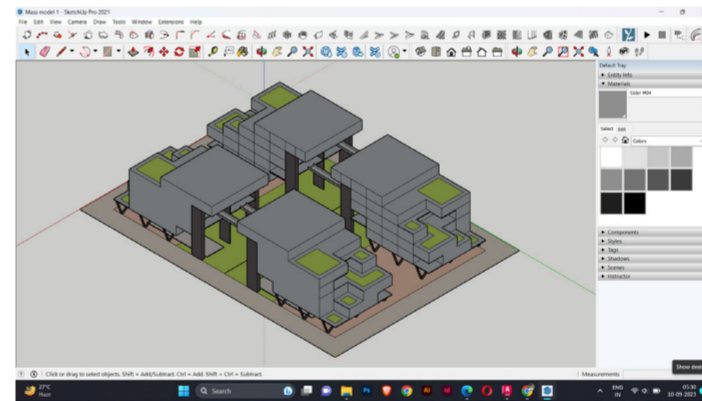
1 AM



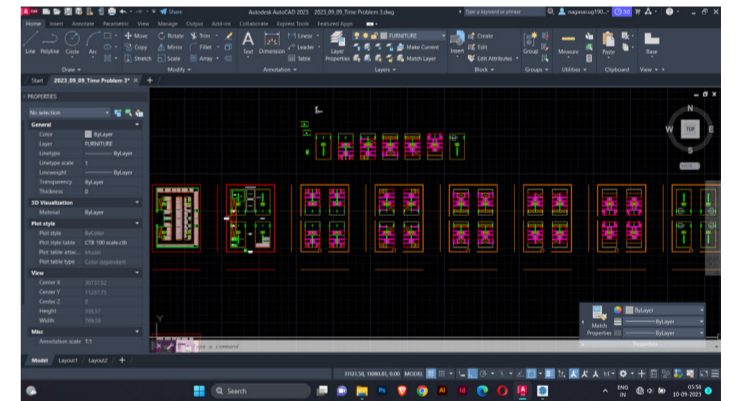
2 AM



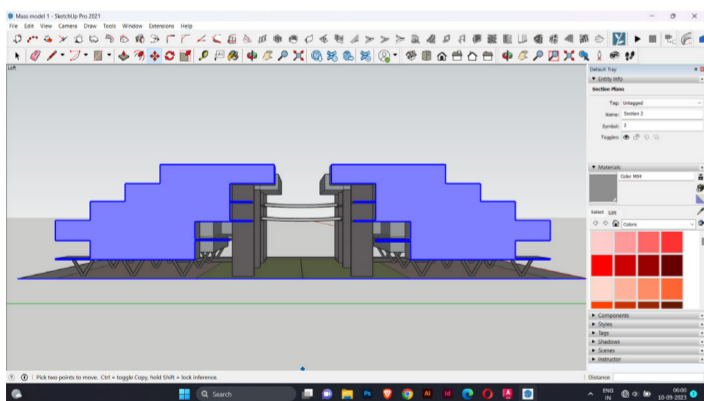
3 AM



4 AM



5 AM



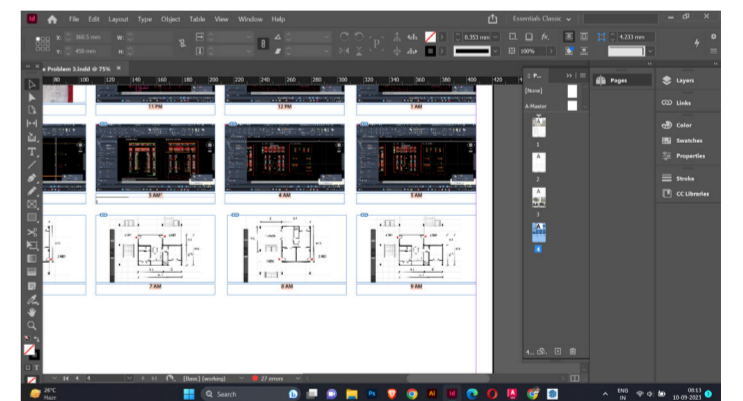
6 AM

BREAK

7 AM

CALCULATIONS

8 AM



9 AM