

A HOUSING PROPOSAL IN GOTA

Plot Size: 7600 sq.mt
Location: Satellite

Permissible F.S.I.: 2.7

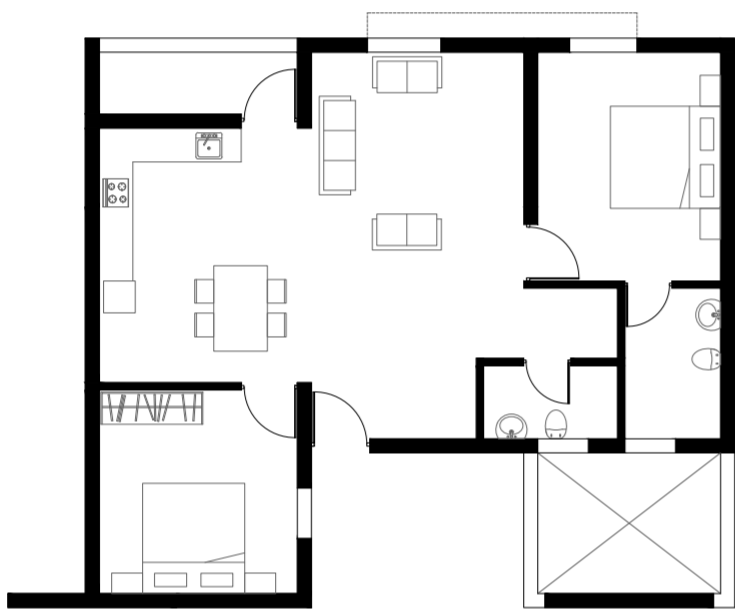
Permissible height: 30m
No of floors in project: 10m

Types of blocks: 3

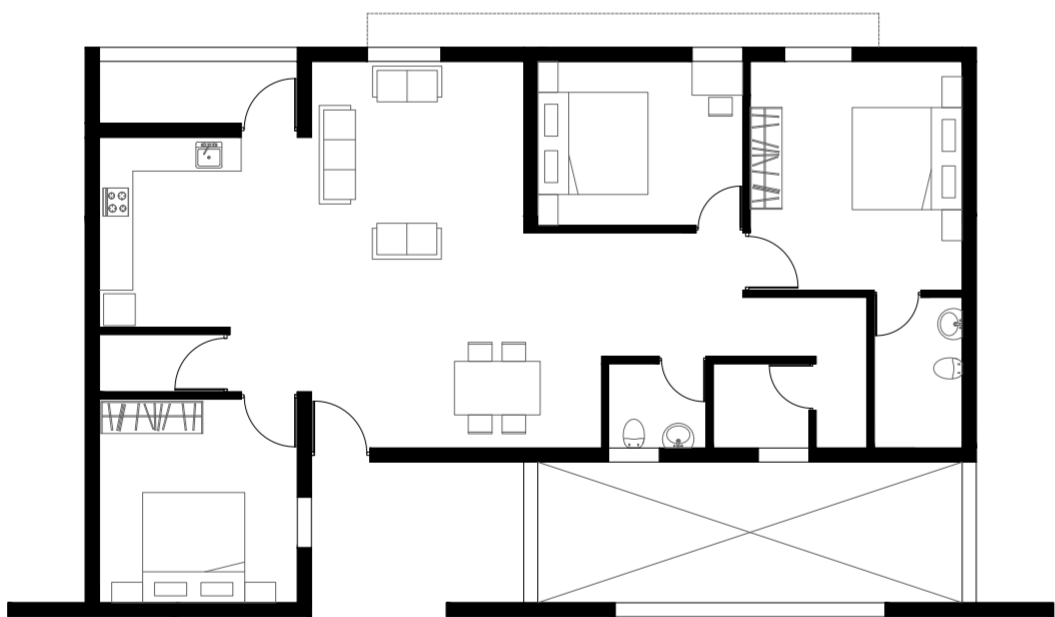
Carpet area: 15049.53 sq.m
Built up area: 21673.083 sq.m
Super built up area: 21811.163 sq.m

Types of units

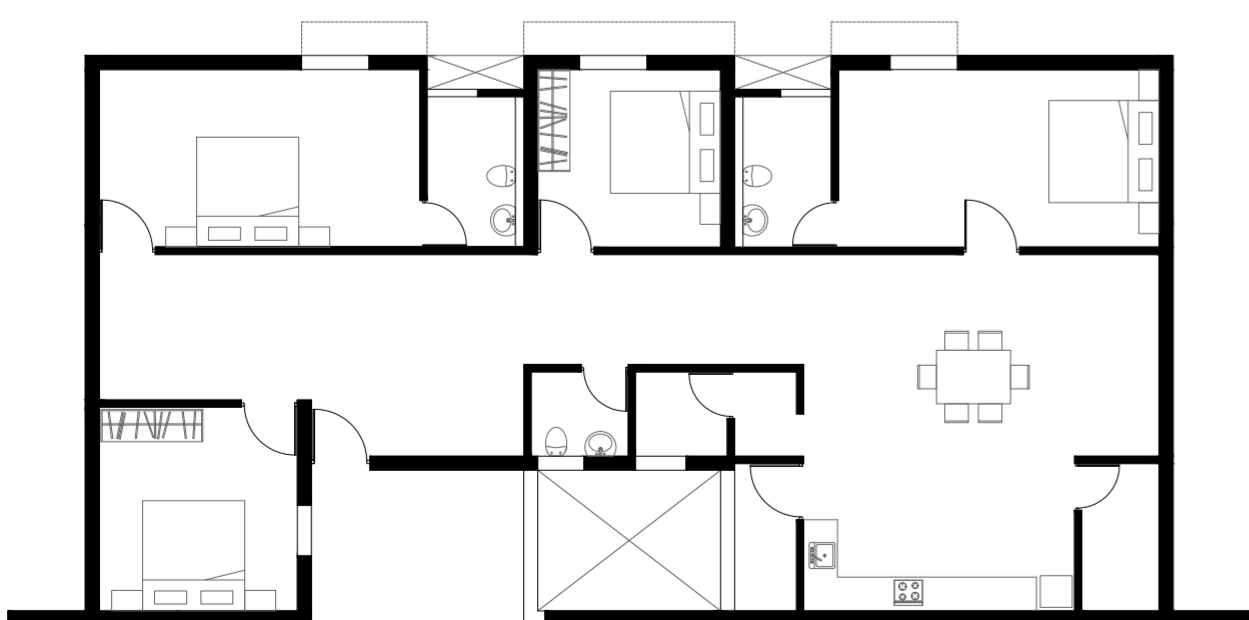
2BHK



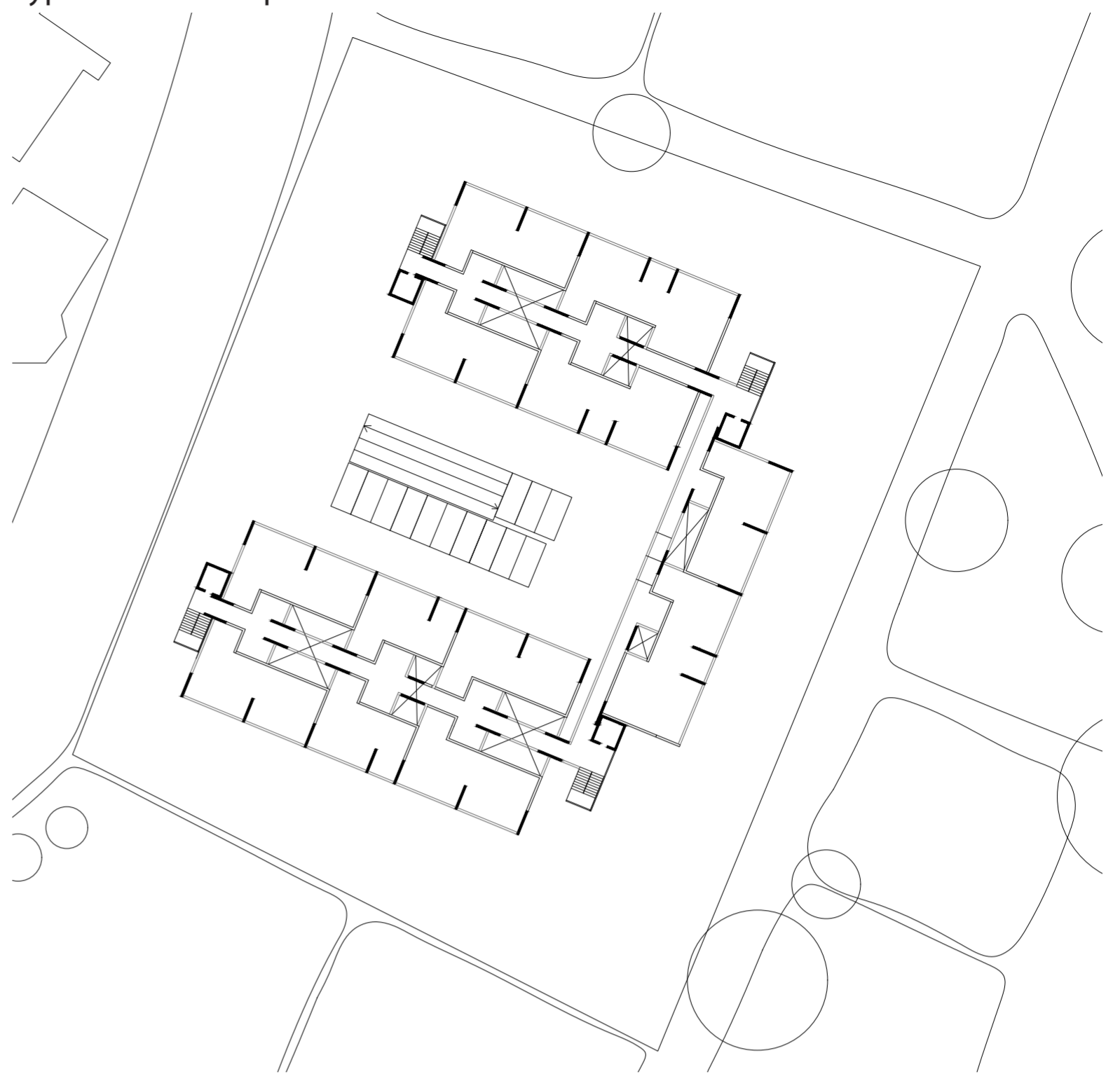
3BHK



4BHK



Typical floor level plan



Basement level plan

