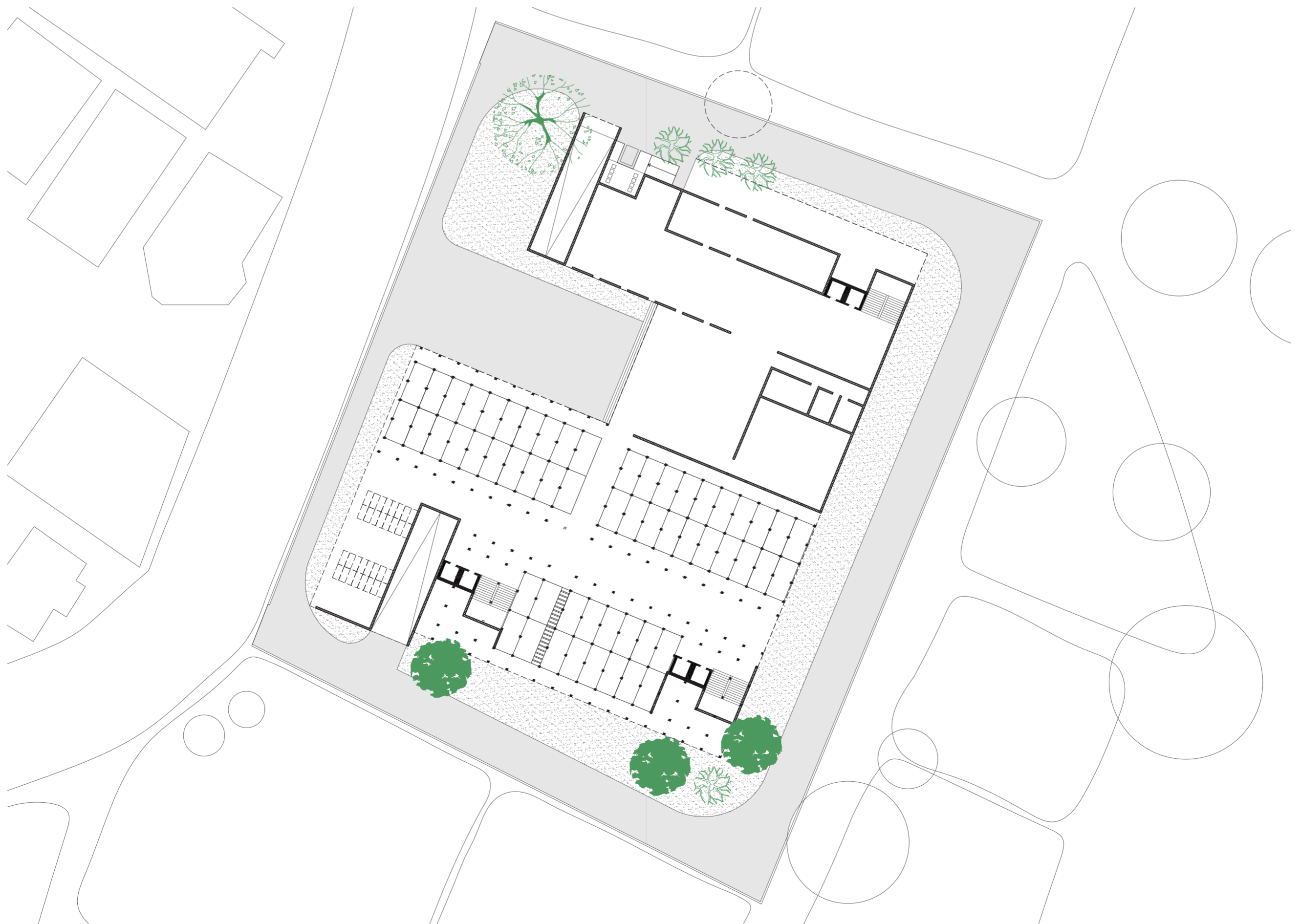


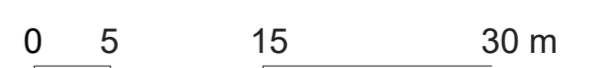
UNDERGROUND PARKING PLAN
 Min. area of parking required = 4100 sq.m.

Area of parking utilised = 4440 sq.m.



GROUND FLOOR PLAN
 50% coverage allows = 3800 sq.m.

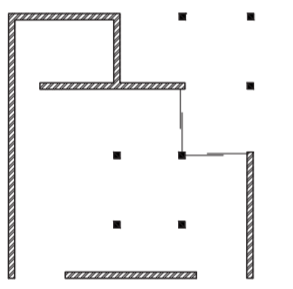
Permissible coverage utilised = 3700 sq.m.



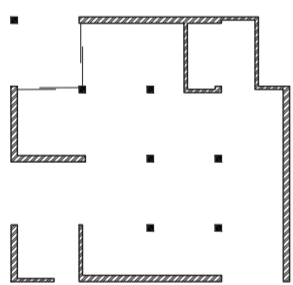


CLUSTER PLAN
Total no. of units - 100 units

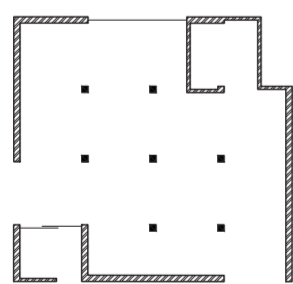
0 5 15 30 m



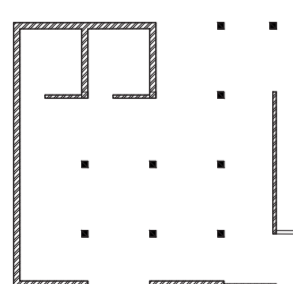
2BHK,
carpet area = 94 sq.m.
Built up area = 100 sq. m.



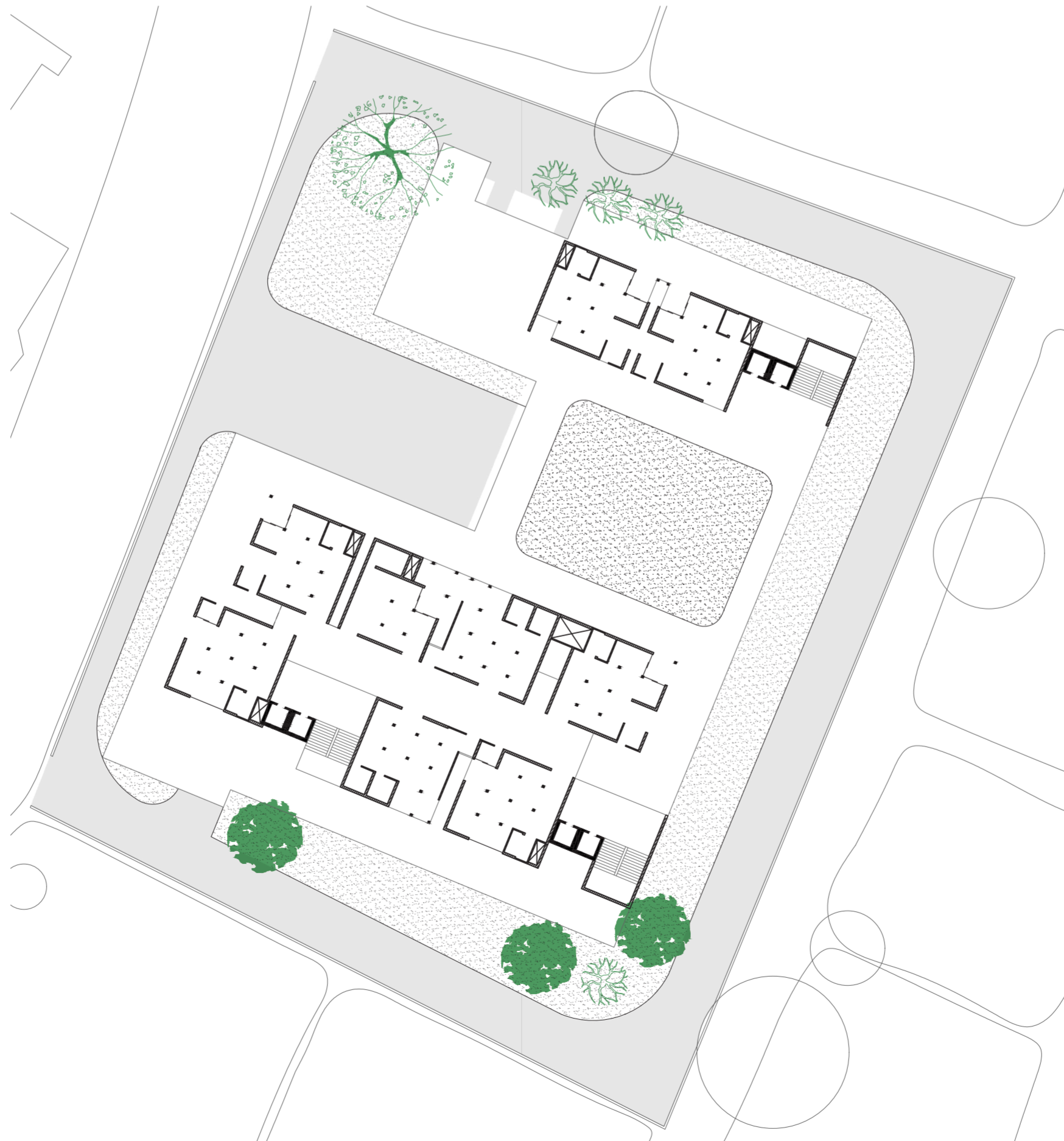
3 BHK,
carpet area = 104 sq. m.
Built up area = 115 sq. m.



3 BHK - multipurpose unit
carpet area = 104 sq. m.
Built up area = 115 sq. m.



4 BHK,
carpet area = 104 sq. m.
Built up area = 115 sq. m.



CLUSTER PLAN
Total no. of units - 243 units

0 5 15 30 m

