

# RESIDENTIAL OPEN SPACES

Its meaning, Its role and Its significance in High rise Apartments



What do you think Comes First?



## ***MASS***

(The housing blocks)



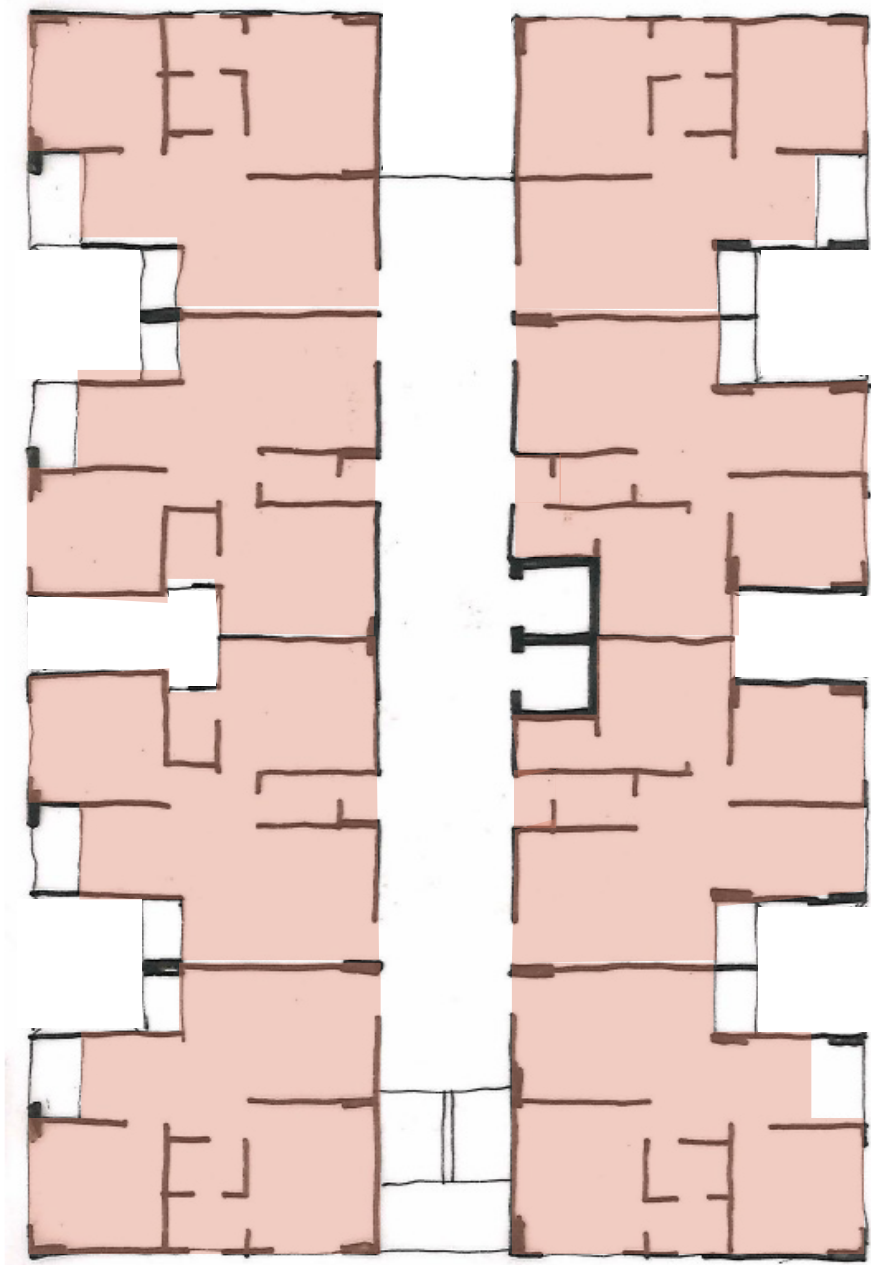
**MASS**

(The housing blocks)



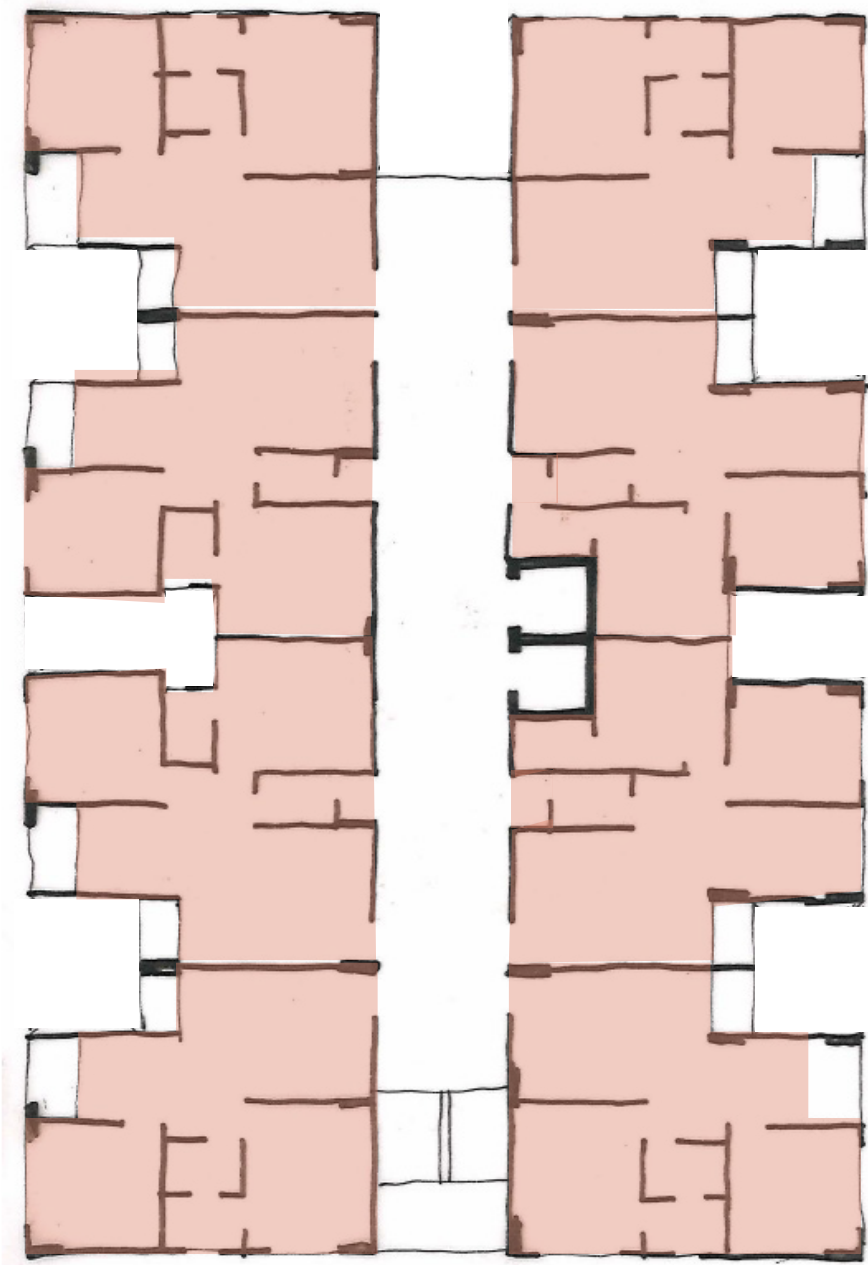
**VOID**

(Common Open Spaces)



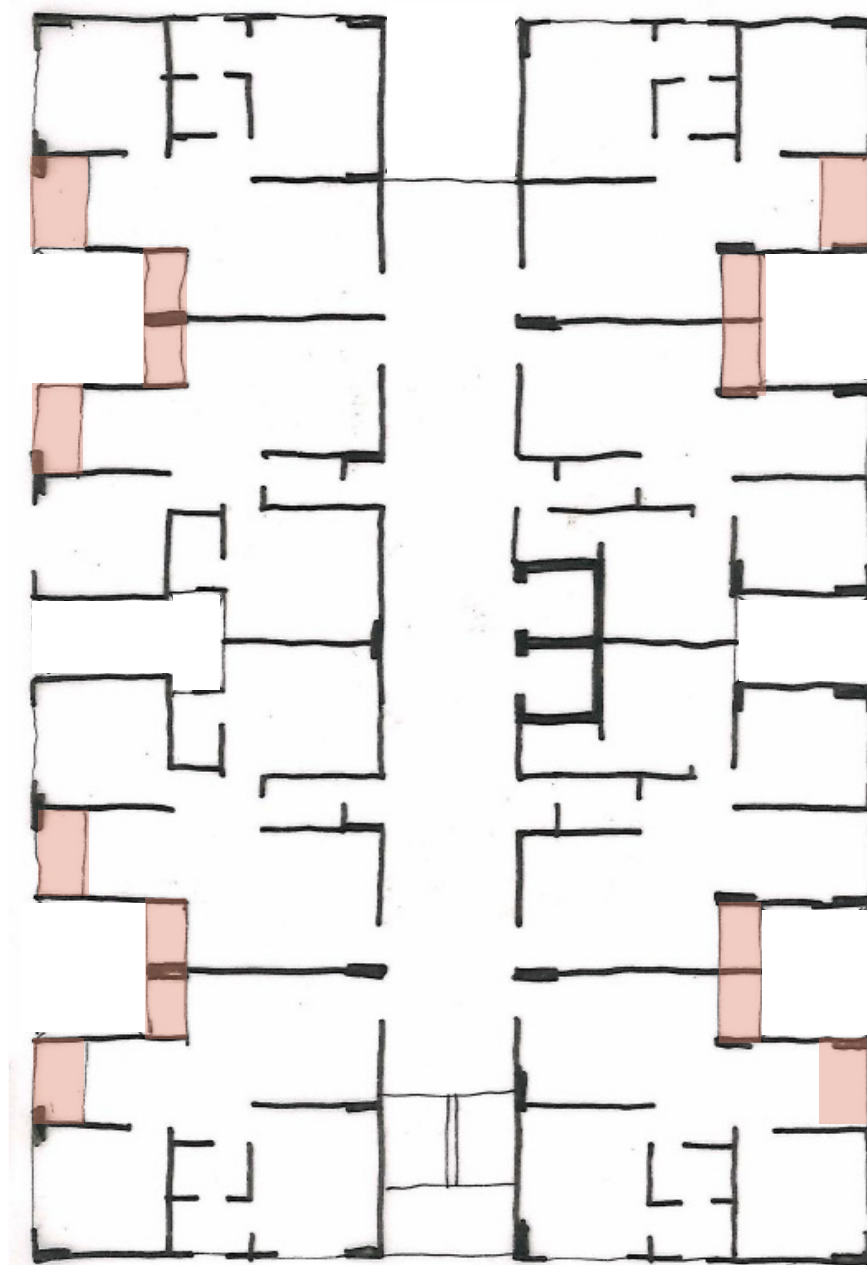
**MASS**

(The spaces within the units)



**MASS**

(The spaces within the units)



**VOID**

(The Balconies)

In most of existing Housing societies

**Mass comes first and Voids are the end results of the mass**



What are these voids or Open Spaces?



## **Spatial Characteristics**

Any one of the sides open

Connection to Ground and Sky

The degree of Openness in a space

## **Spatial Characteristics**

Any one of the sides open  
Connection to Ground and Sky  
The degree of Openness in a space

## **Experiential Characteristics**

Association with elements of nature such  
as greens, sunlight, rain, wind, etc.

## **Spatial Characteristics**

Any one of the sides open  
Connection to Ground and Sky  
The degree of Openness in a space

## **Experiential Characteristics**

Association with elements of nature such  
as greens, sunlight, rain, wind, etc.

## **Behavioural Characteristics**

Activities happening in the space  
Association with the elements in outdoor spaces  
such as use of swing, benches, stone flooring, etc.

**MAYFAIR APARTMENTS**  
[GACHIBOWLI - TELLAPUR]

**Great  
Outdoors  
Here.**

Call: 7026 300 400  
www.greenmarkdevelopers.com

**GREENMARK**

**SURROUNDED  
BY NATURE**

**GREENMARK**

[www.greenmarkdevelopers.com](http://www.greenmarkdevelopers.com)

**CONTACT US**

Herbal Gardens   Forest Gardens   Pergolas   Tennis Court

**MAYFAIR APARTMENTS**  
[GACHIBOWLI - TELLAPUR] miro

“Open Space as a Selling Point”

# Raising Concerns



## Large Dead Open Spaces

Large Dead Open Spaces without a sense of ownership. The existing open spaces are not integrated with the housing. (the masses are created first and the left over spaces are claimed to be the open spaces for the housing.

# Raising Concerns



## Large Dead Open Spaces

Large Dead Open Spaces without a sense of ownership. The existing open spaces are not integrated with the housing. (the masses are created first and the left over spaces are claimed to be the open spaces for the housing.



## Narrow Vertical Voids

Though some of the existing housing has open spaces, they are usually long and narrow vertical voids which dont really serve the purpose of an open space for the lower floors.

# Raising Concerns



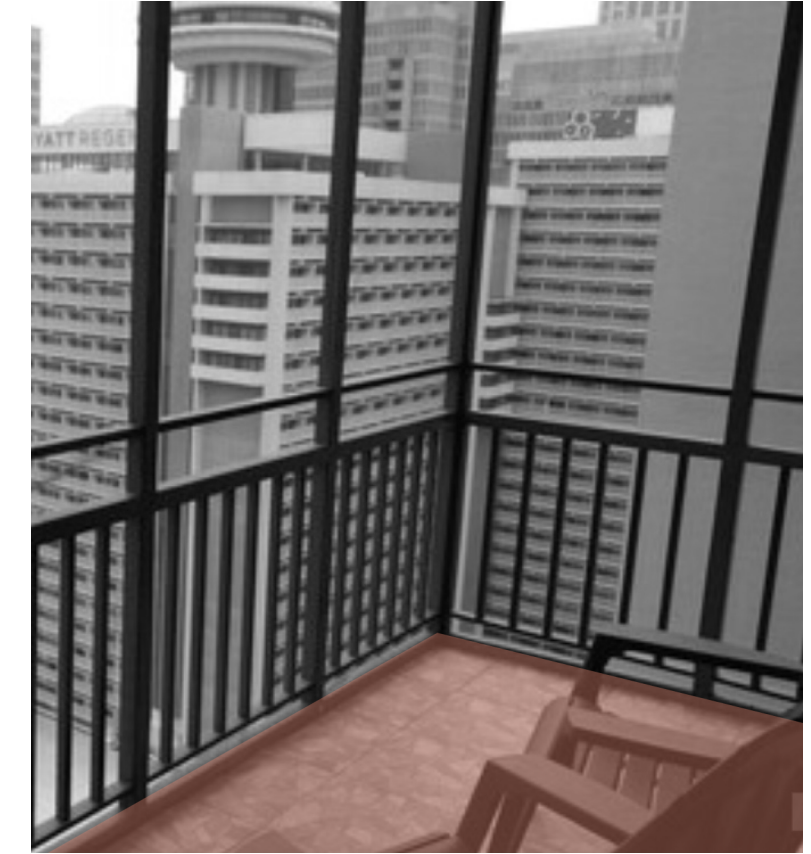
## Large Dead Open Spaces

Large Dead Open Spaces without a sense of ownership. The existing open spaces are not integrated with the housing. (the masses are created first and the left over spaces are claimed to be the open spaces for the housing.



## Narrow Vertical Voids

Though some of the existing housing has open spaces, they are usually long and narrow vertical voids which dont really serve the purpose of an open space for the lower floors.



## Balconies as left over Spaces

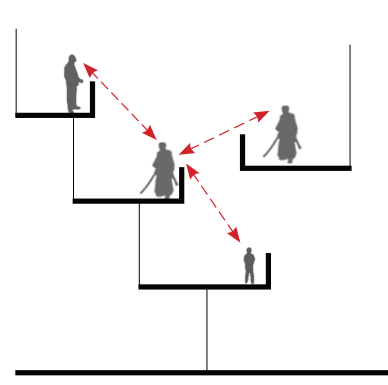
Balconies are designed in a way that they become left over spaces. They are not integrated with any activities of the house, no two balconies over look onto each other to increase interaction and scale of it is making it non-functional.

## **What is already been done?**

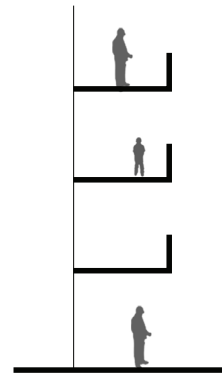
How has these concerns been tackled by Architects around the world?  
What are the various strategies used to create meaningful open spaces?



## Social Interactions

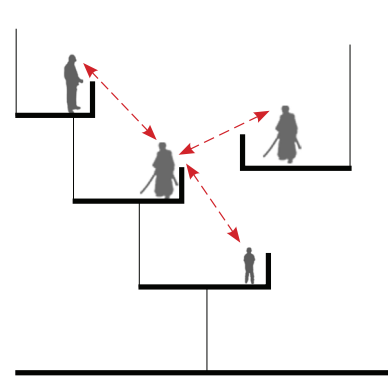


Interactive

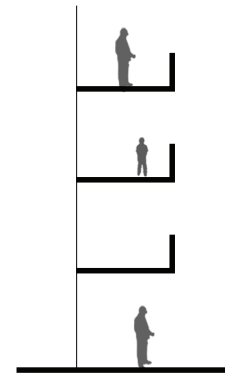


Non-Interactive

### Social Interactions

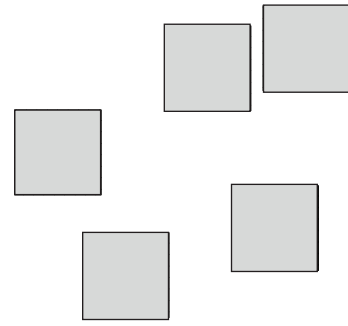


Interactive

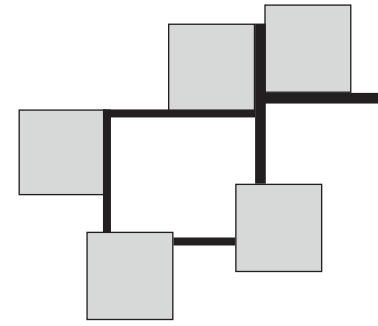


Non-Interactive

### Connection Between Open Spaces

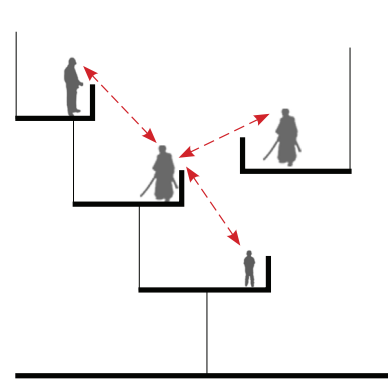


Seperated

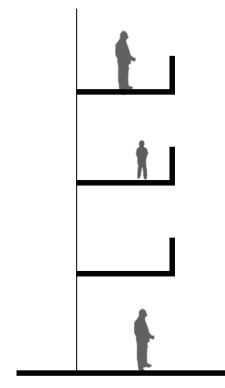


Interlinked

### Social Interactions

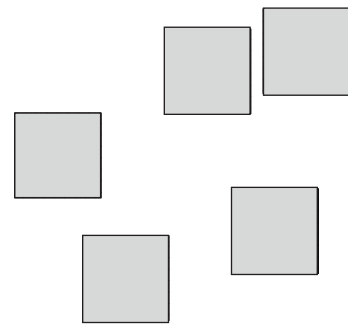


Interactive

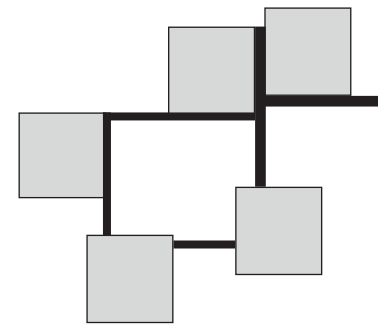


Non-Interactive

### Connection Between Open Spaces

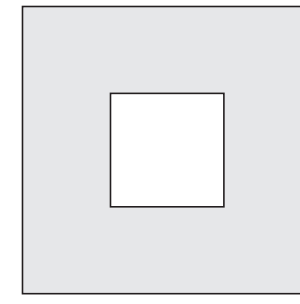


Seperated

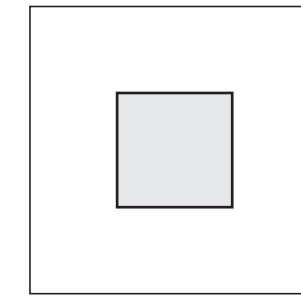


Interlinked

### Location in the Built

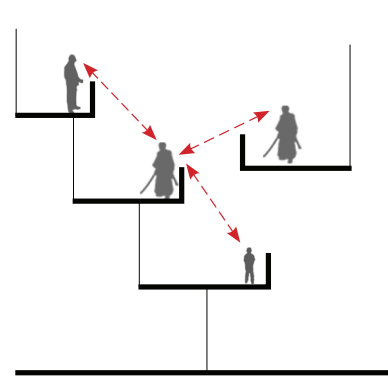


Pheriphery

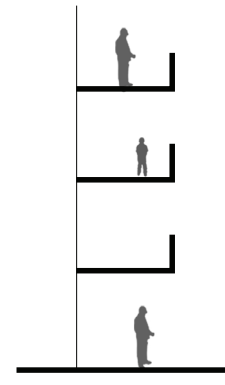


Centre

### Social Interactions

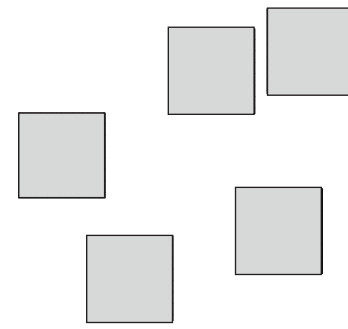


Interactive

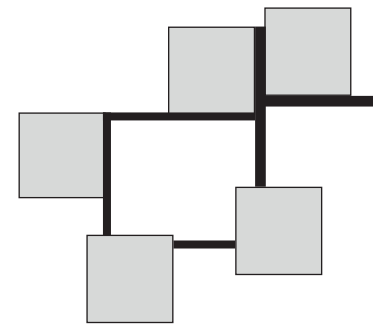


Non-Interactive

### Connection Between Open Spaces

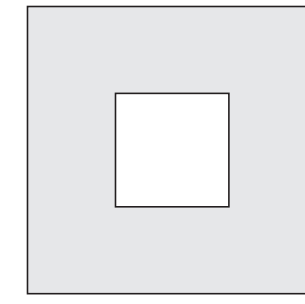


Seperated

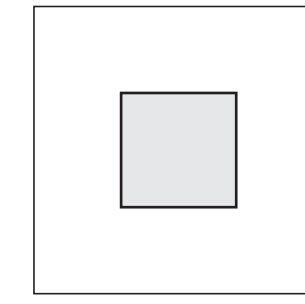


Interlinked

### Location in the Built

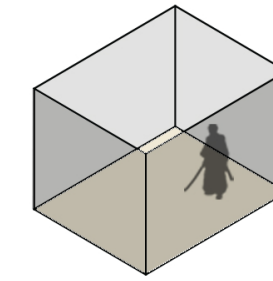


Pheriphery

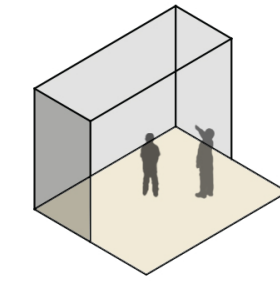


Centre

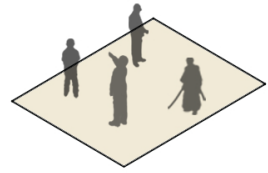
### Level of Privacy



Private

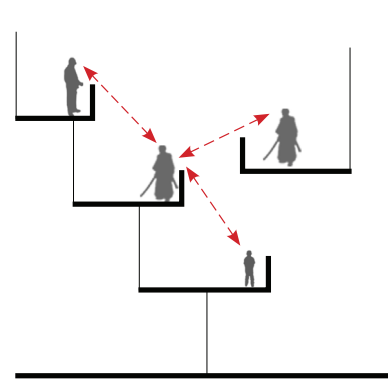


Semi- Private/  
Public

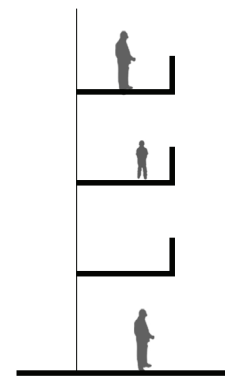


Public

### Social Interactions

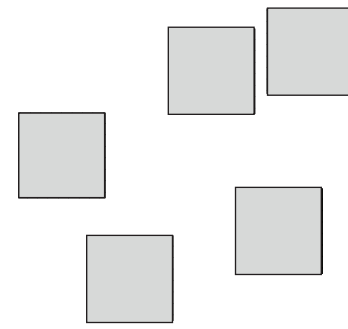


Interactive

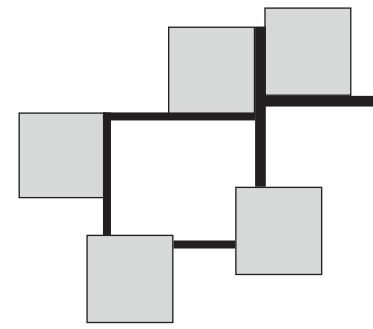


Non-Interactive

### Connection Between Open Spaces

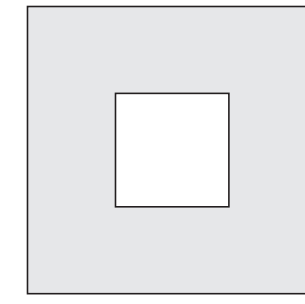


Seperated

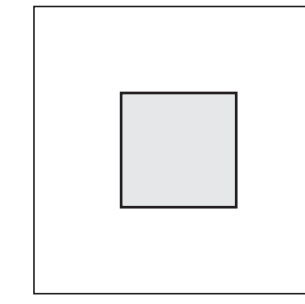


Interlinked

### Location in the Built

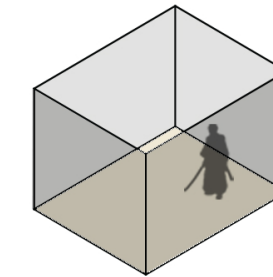


Pheriphery

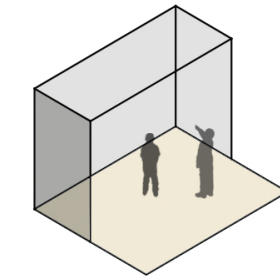


Centre

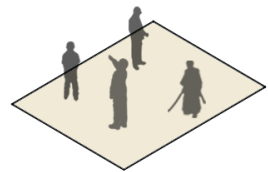
### Level of Privacy



Private

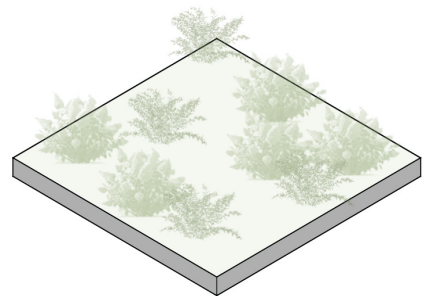


Semi- Private/  
Public

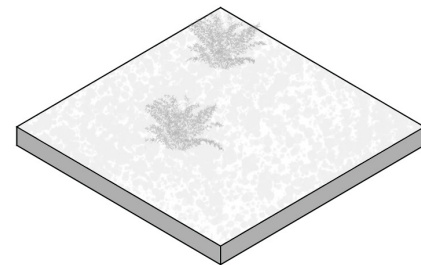


Public

### Association with Nature

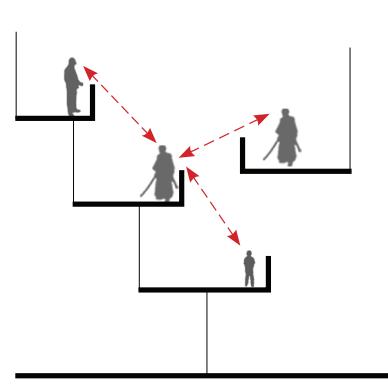


Vegetated

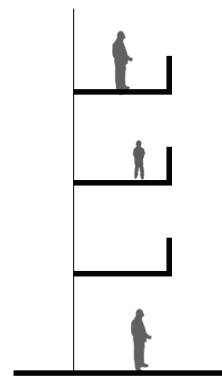


Non-Vegetated

### Social Interactions

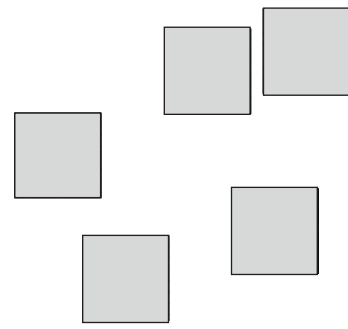


Interactive

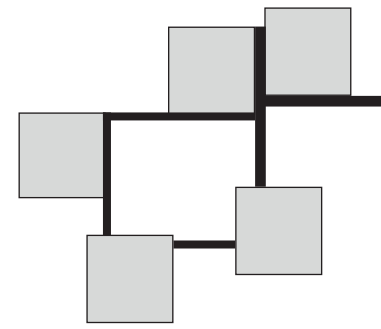


Non-Interactive

### Connection Between Open Spaces

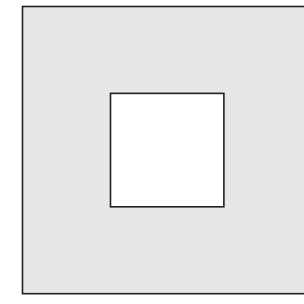


Seperated

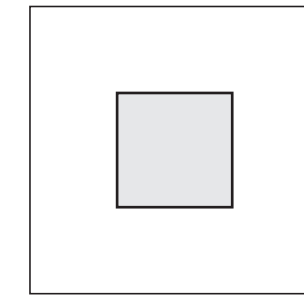


Interlinked

### Location in the Built

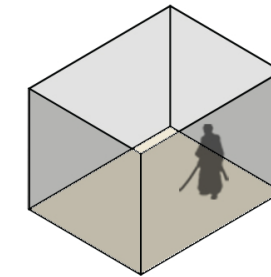


Pheriphery

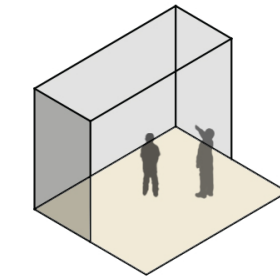


Centre

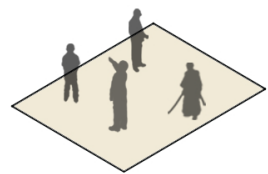
### Level of Privacy



Private

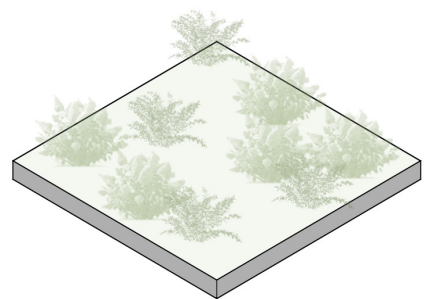


Semi- Private/  
Public

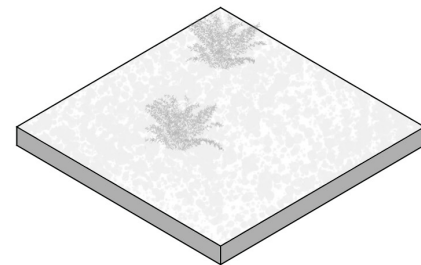


Public

### Association with Nature

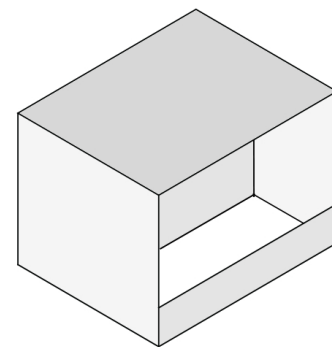


Vegetated

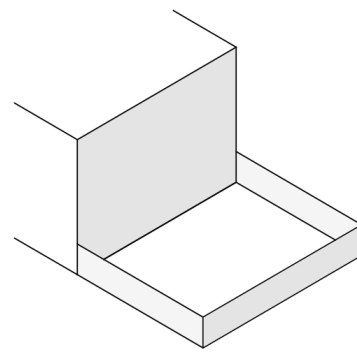


Non-Vegetated

### Nature of Open Space

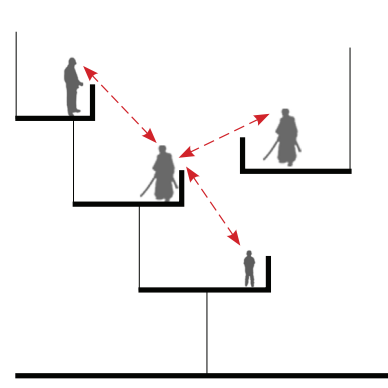


Closed

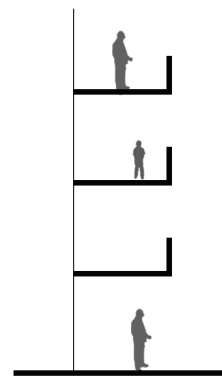


Open

### Social Interactions

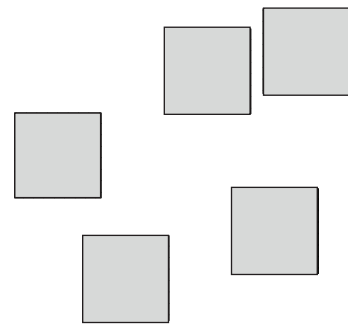


Interactive

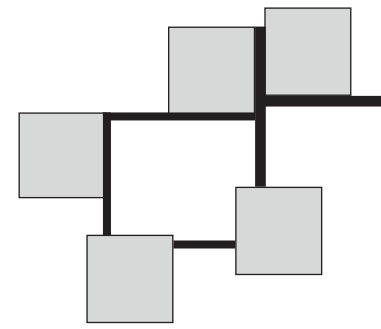


Non-Interactive

### Connection Between Open Spaces

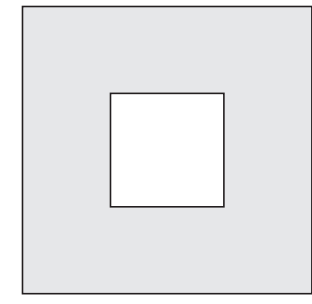


Seperated

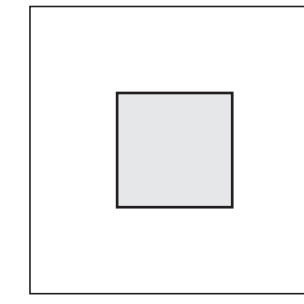


Interlinked

### Location in the Built

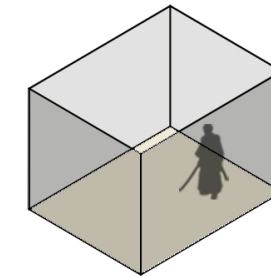


Pheriphery

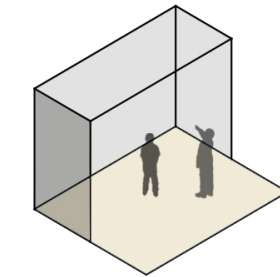


Centre

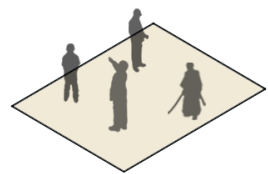
### Level of Privacy



Private

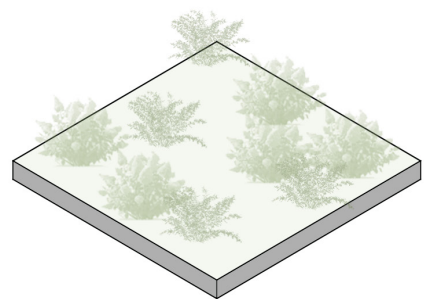


Semi- Private/  
Public

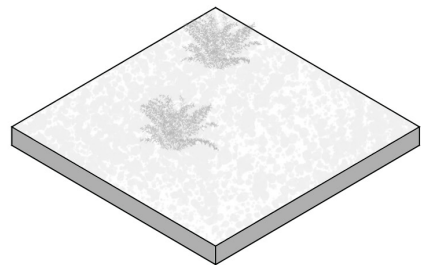


Public

### Association with Nature

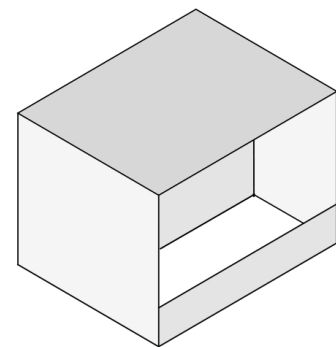


Vegetated

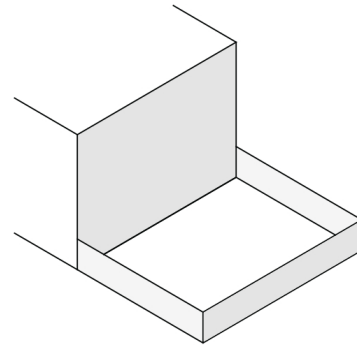


Non-Vegetated

### Nature of Open Space

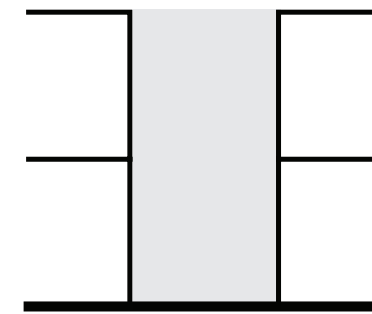


Closed



Open

### Volumes

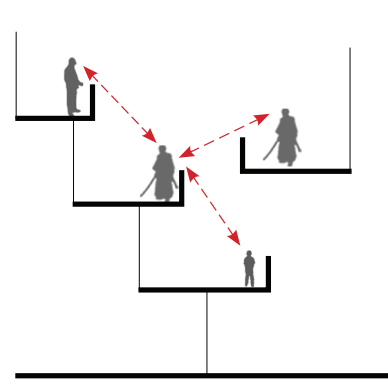


Double

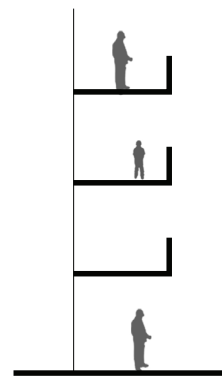


Single

### Social Interactions

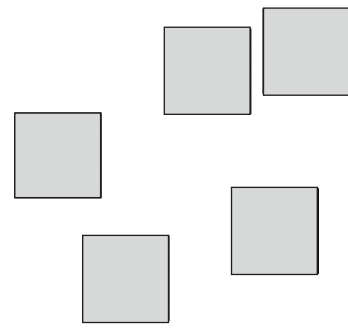


Interactive

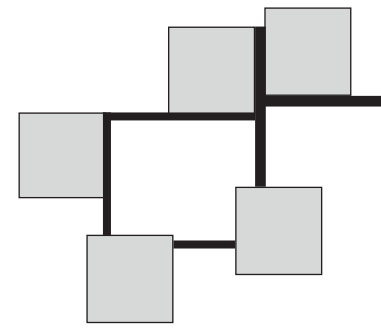


Non-Interactive

### Connection Between Open Spaces

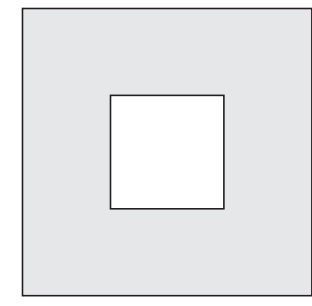


Seperated

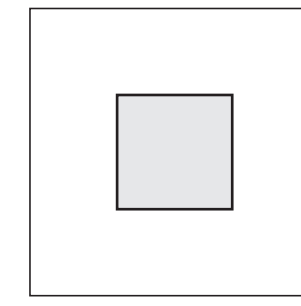


Interlinked

### Location in the Built

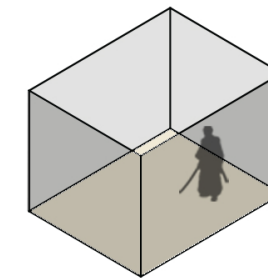


Pheriphery

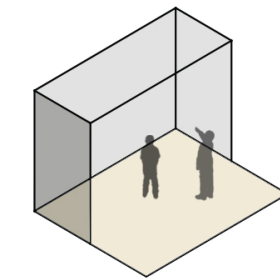


Centre

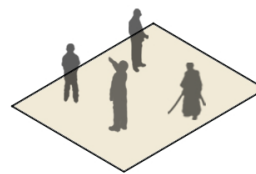
### Level of Privacy



Private

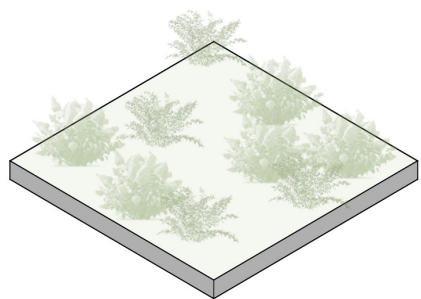


Semi- Private/  
Public

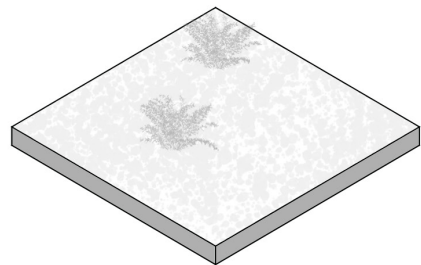


Public

### Association with Nature

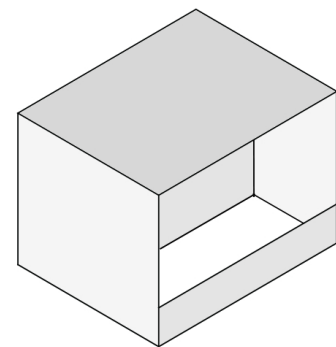


Vegetated

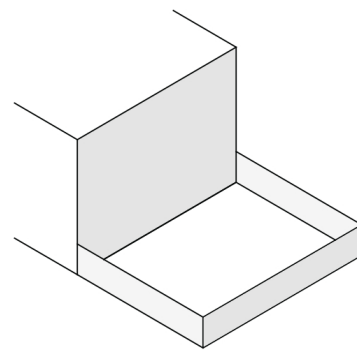


Non-Vegetated

### Nature of Open Space

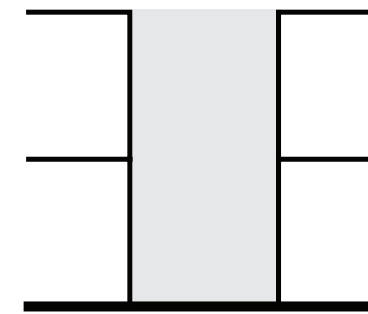


Closed



Open

### Volumes

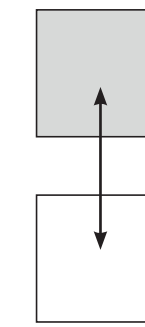


Double

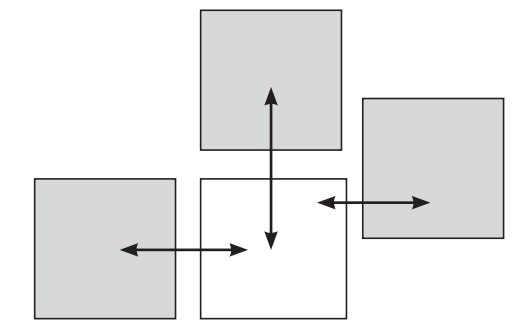


Single

### Integration with no. of spaces



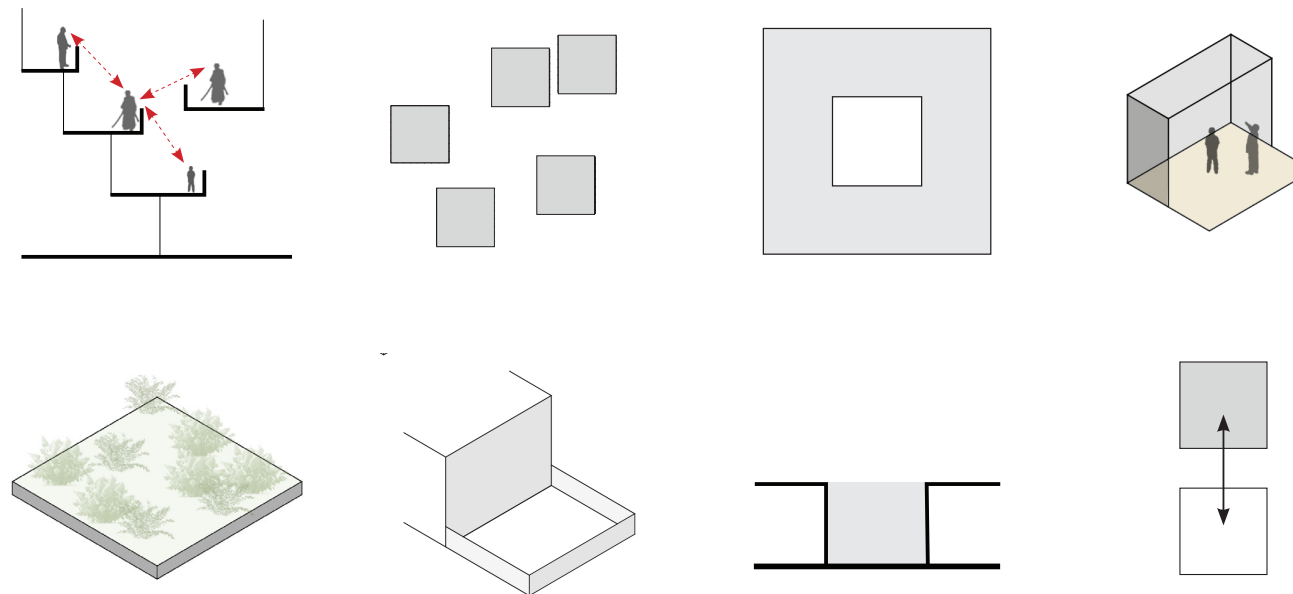
Single



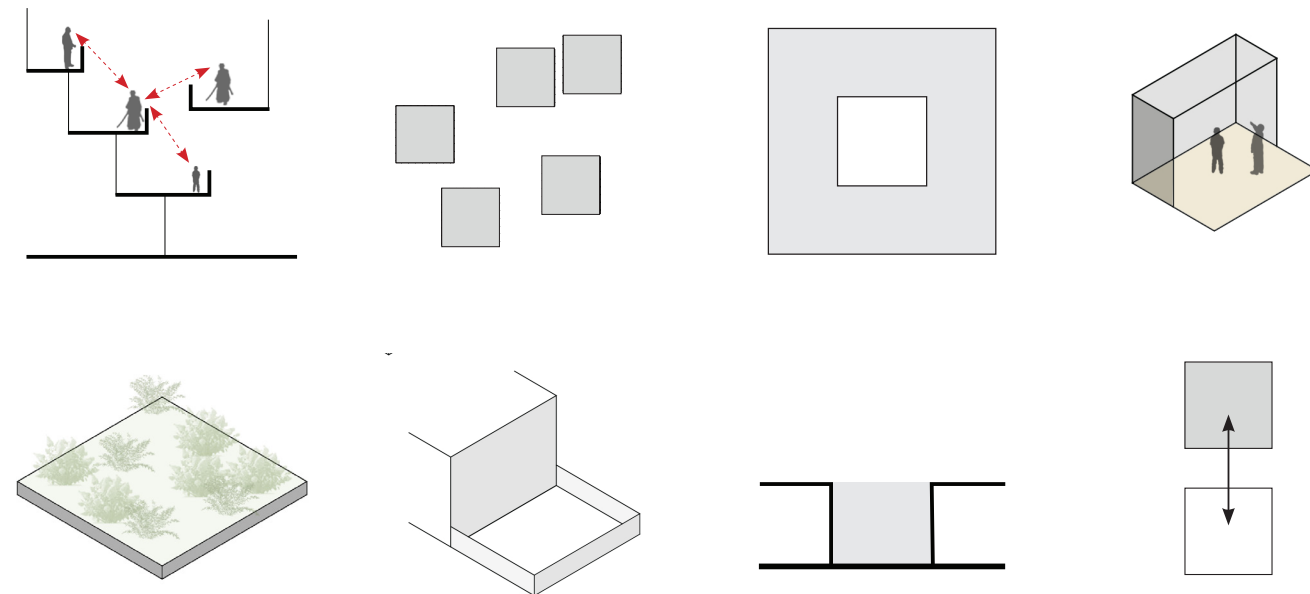
Multiple



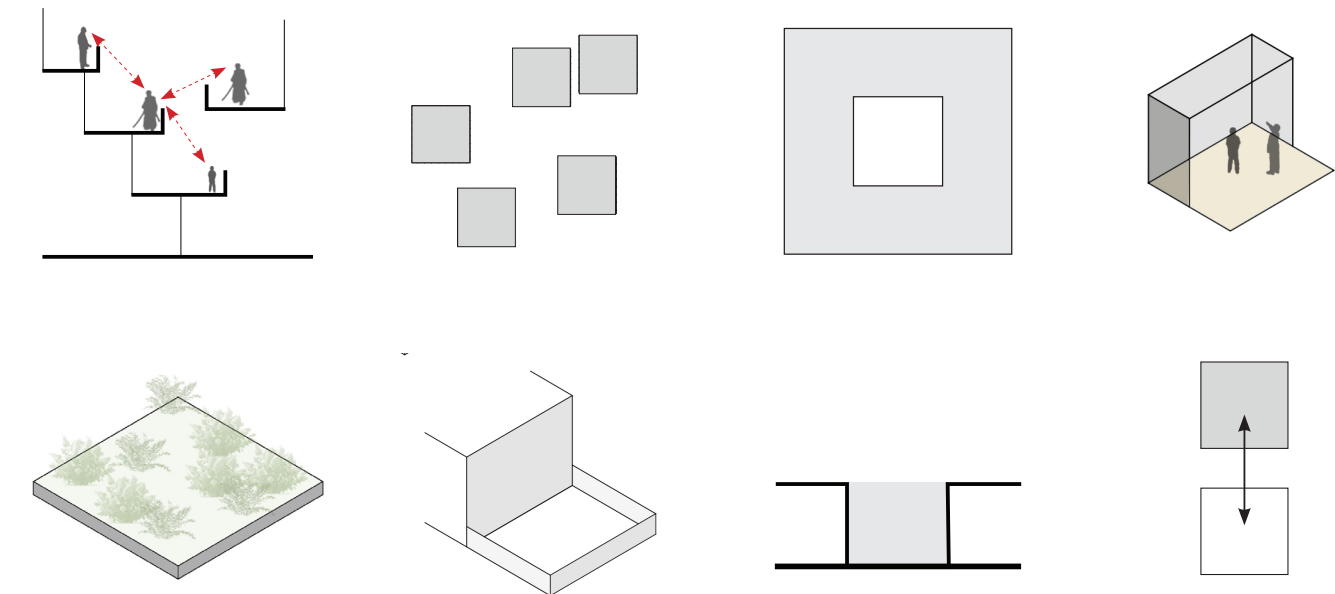
# Habitat 67



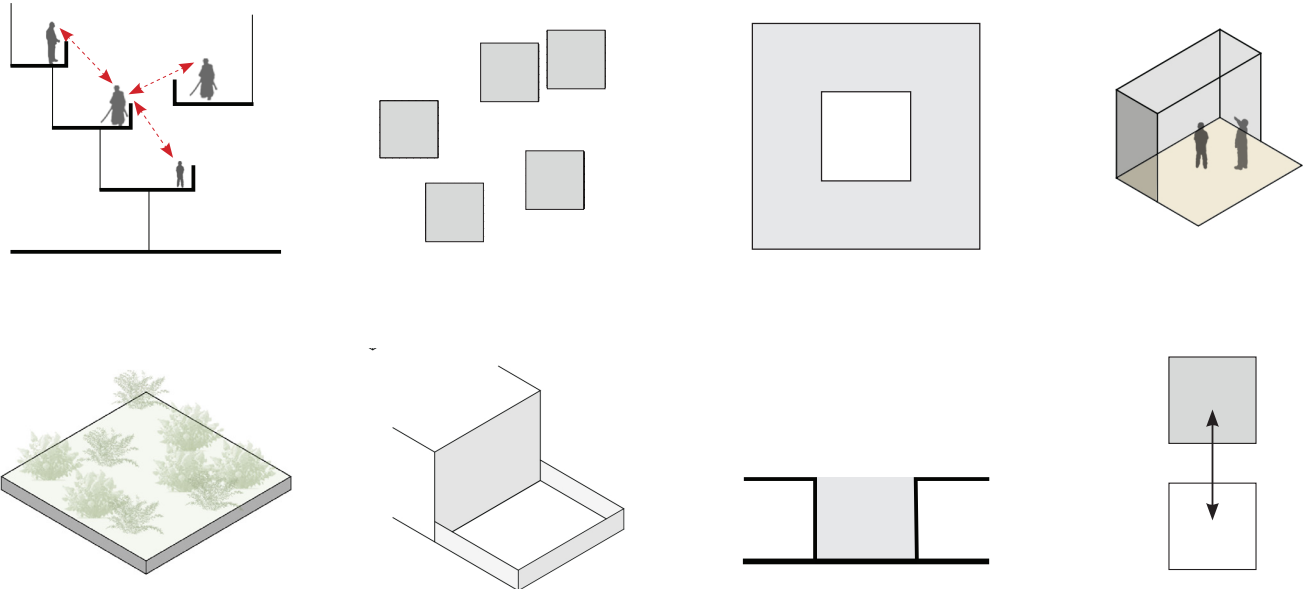
# Habitat 67



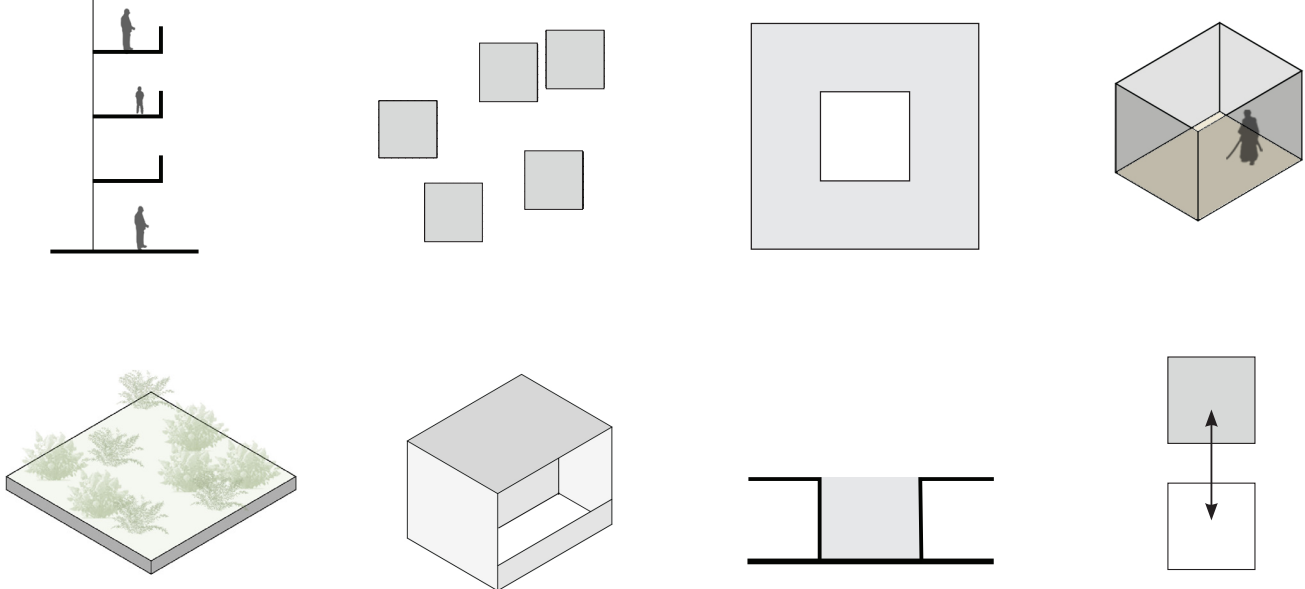
# Interlace



# Interlace



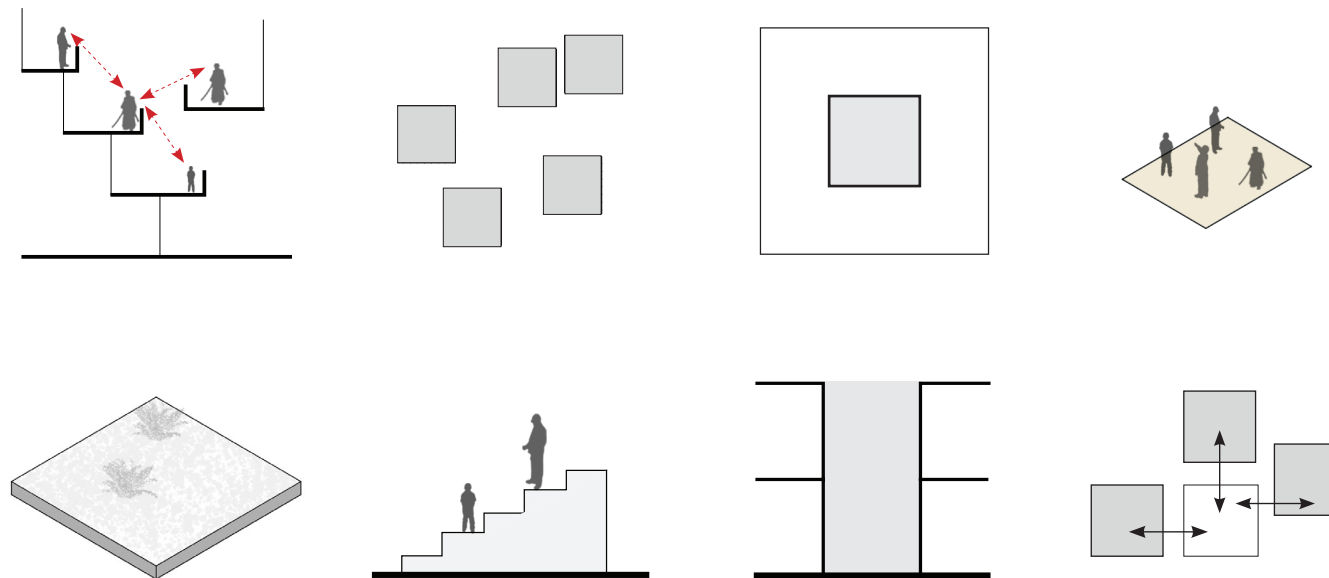
# Green Veil



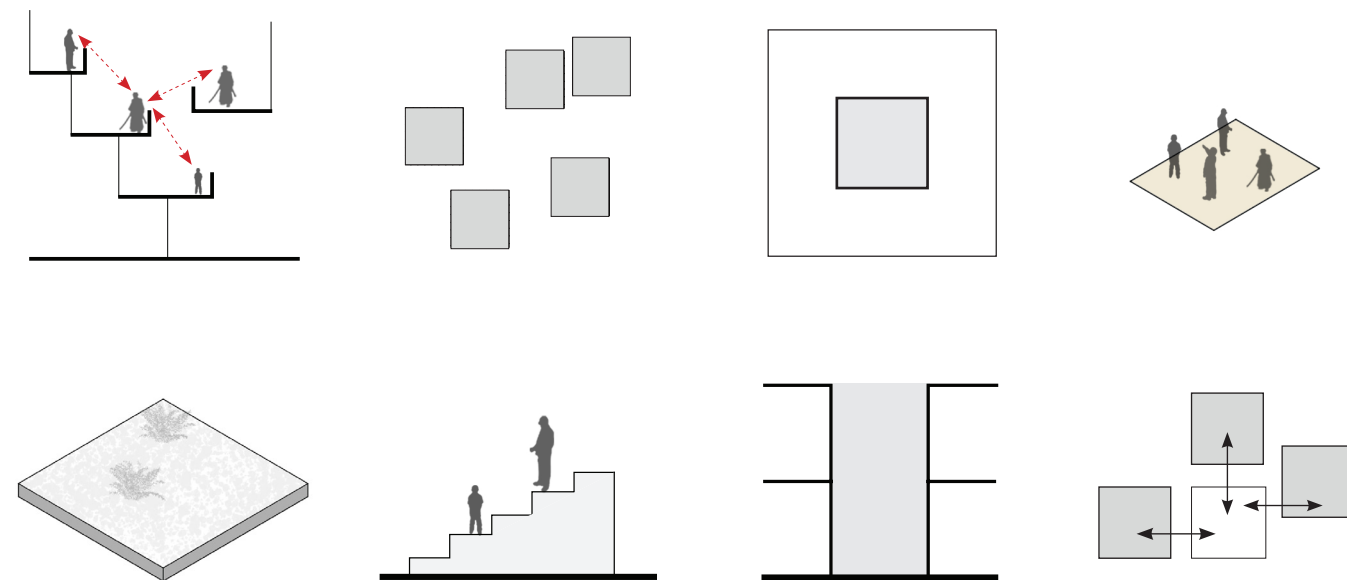
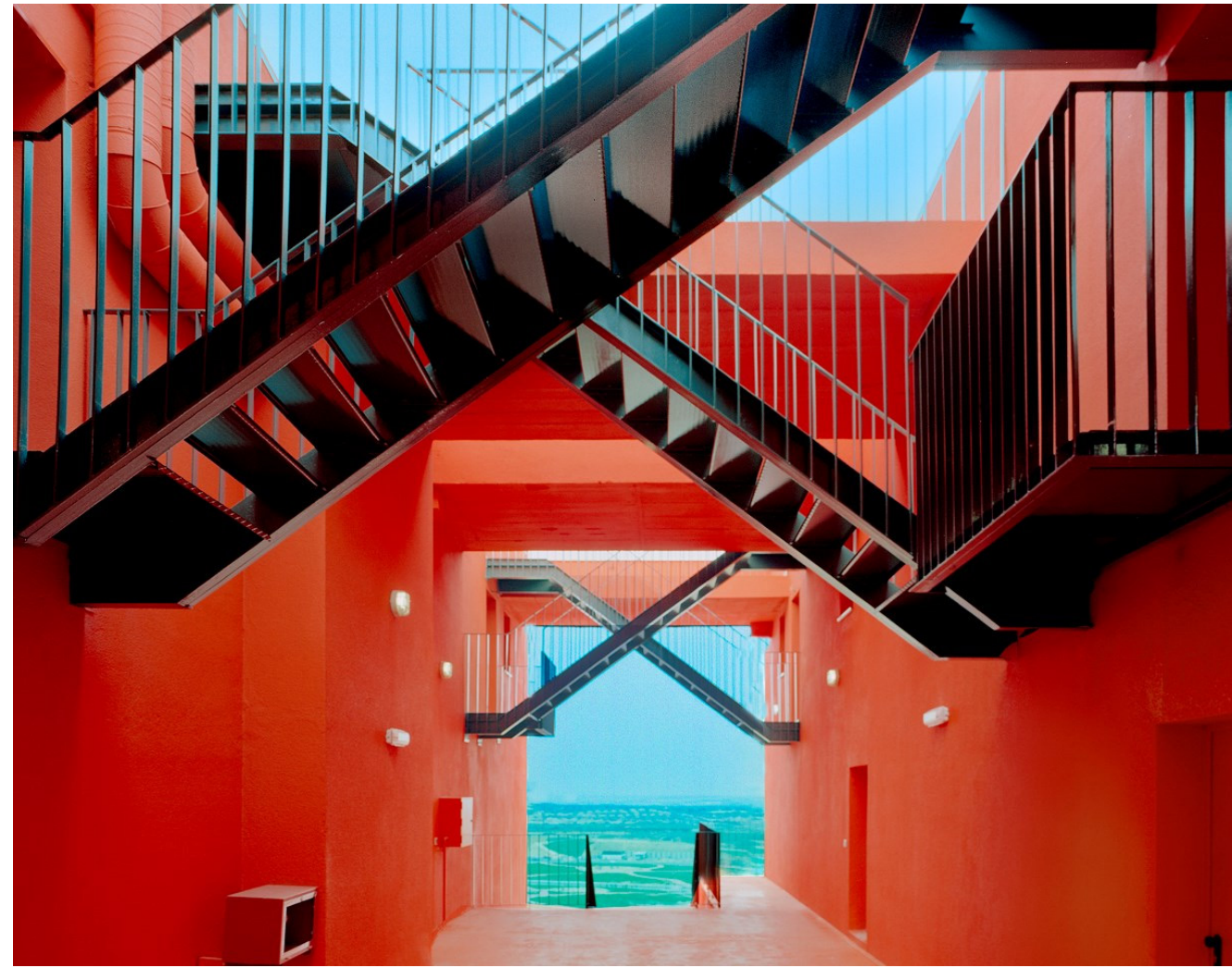


Which of this will you then consider as an Open Space?

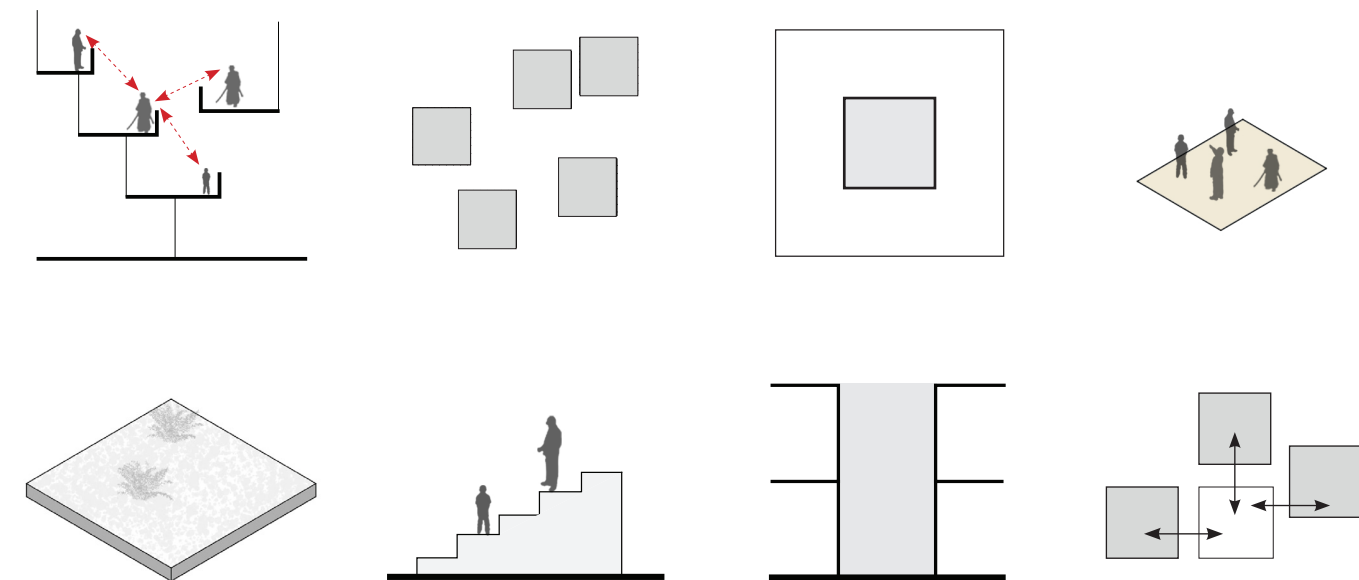
# Mirador



# Mirador



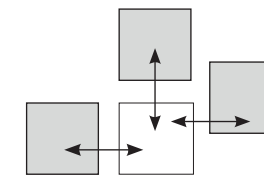
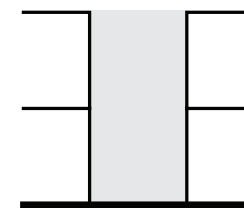
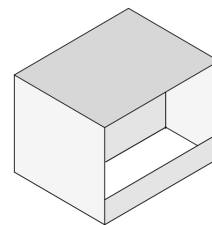
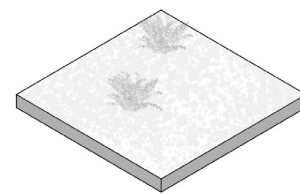
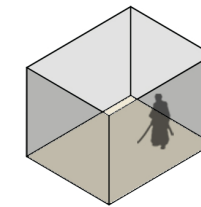
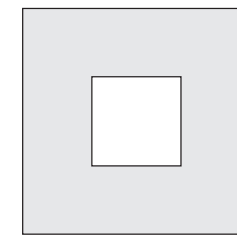
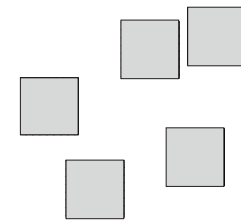
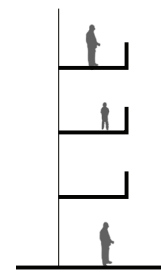
# La Muralla Roja





Do you think any other spaces can become an open space?

# Kanchanjunga Apartments

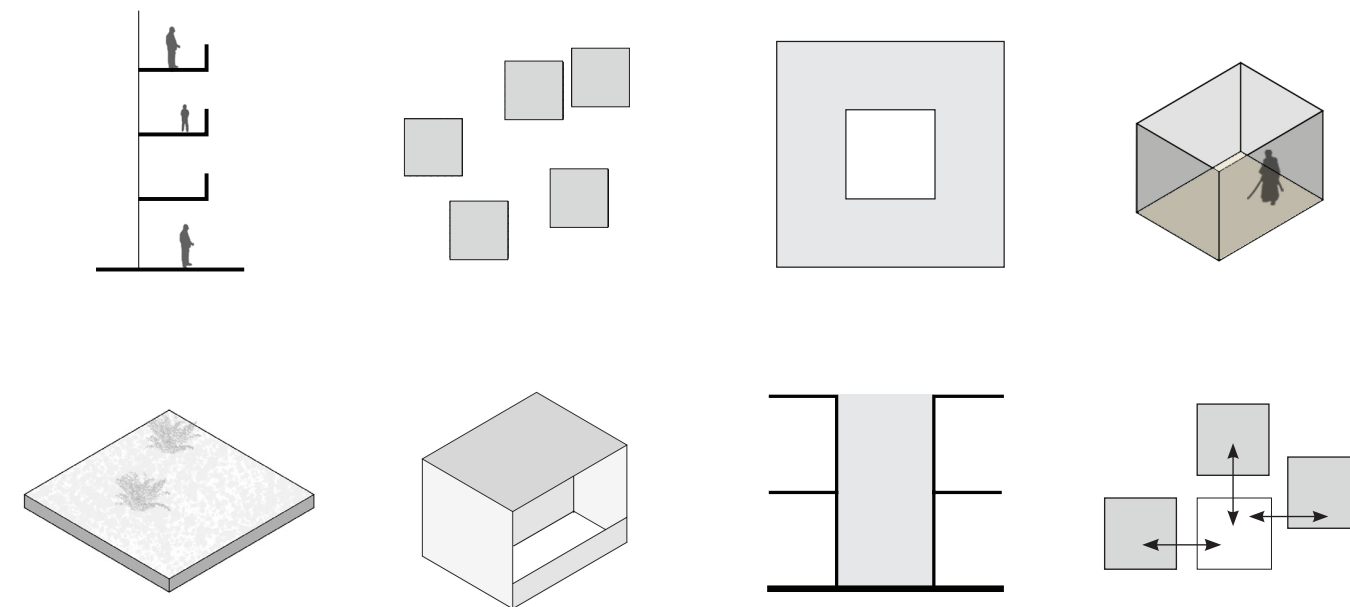




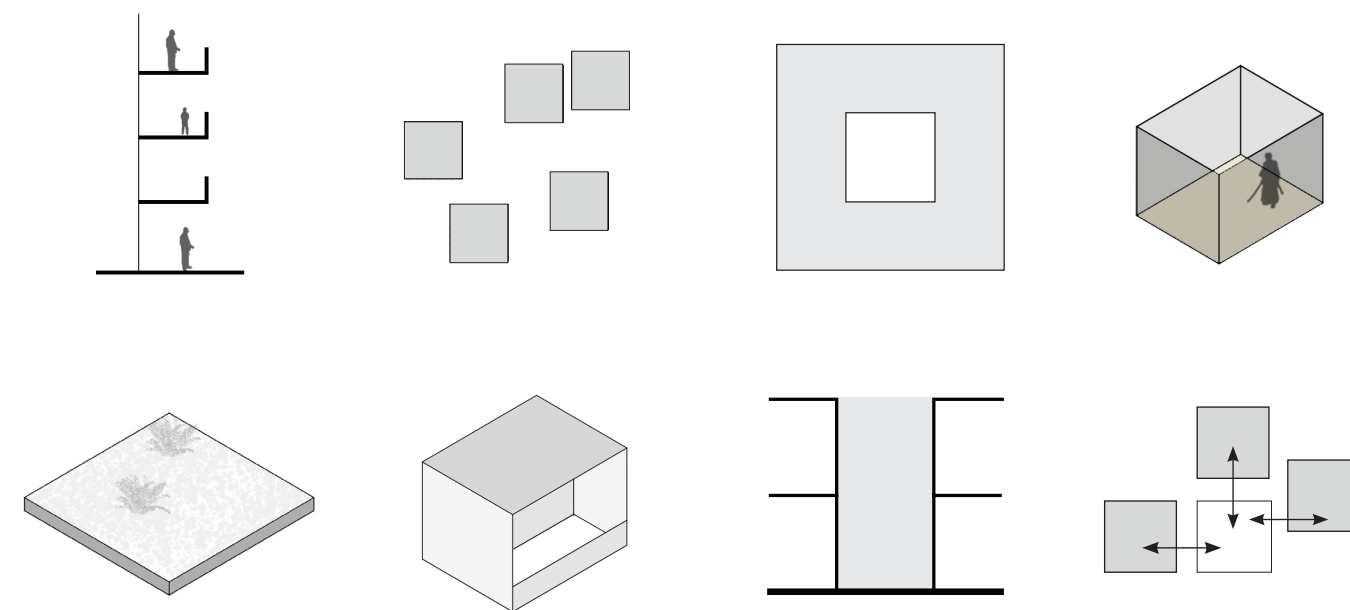
# Kanchanjunga Apartments



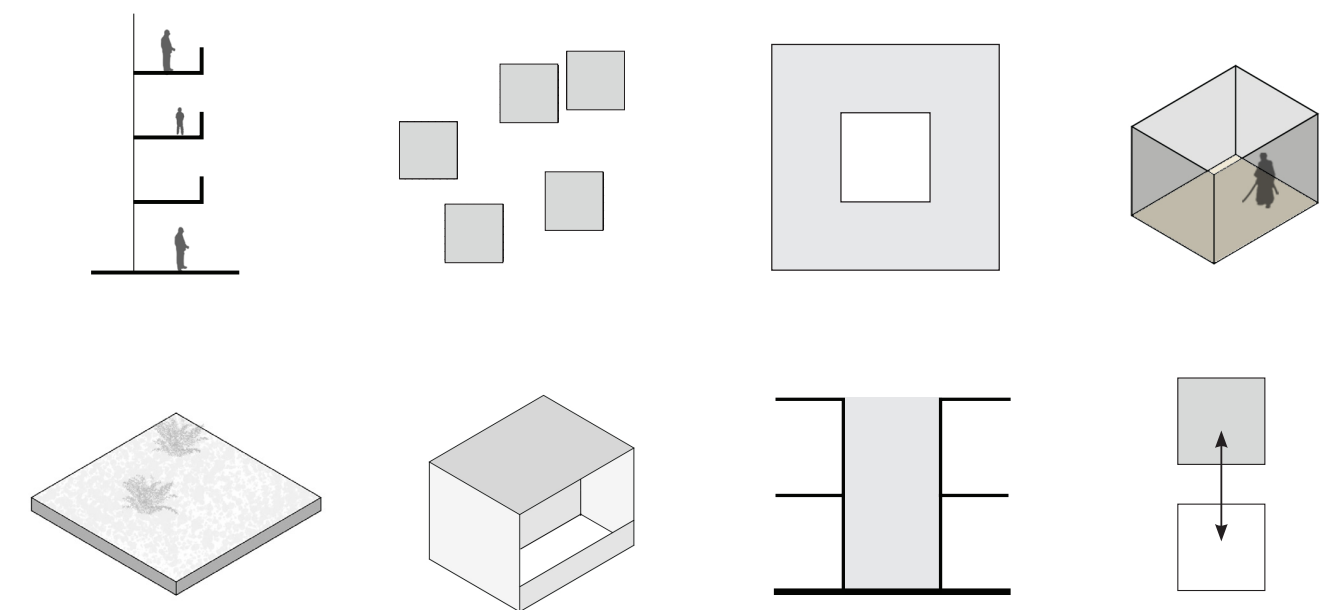
# Skydeck Select



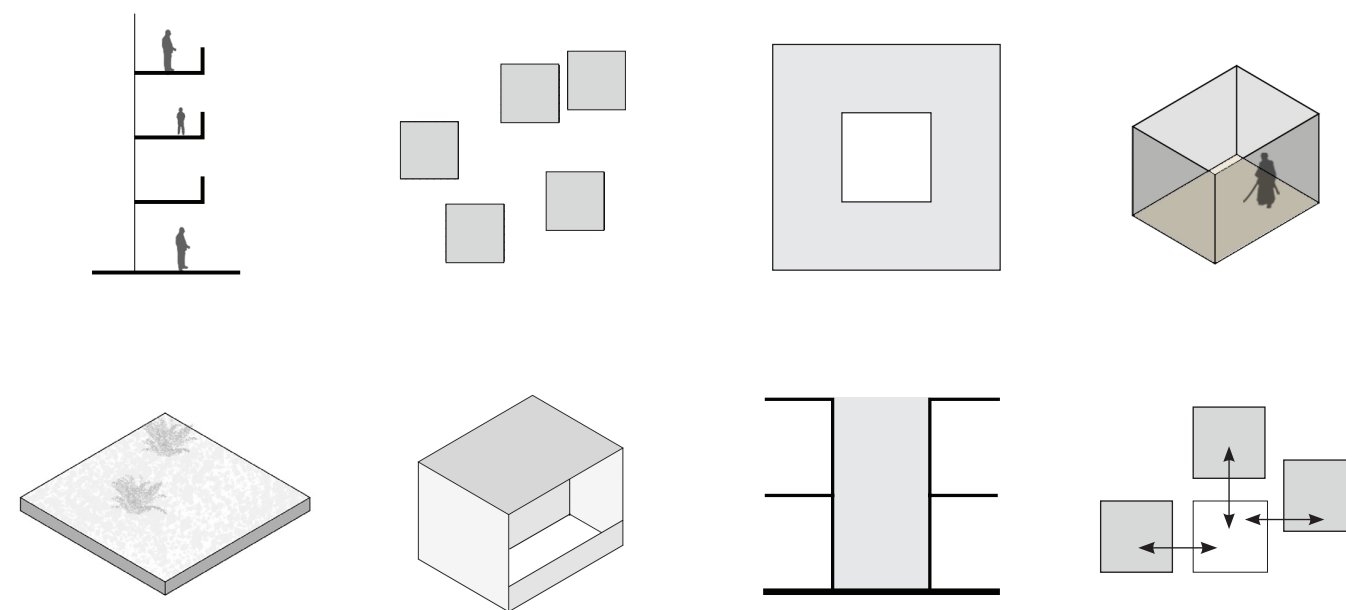
# Kanchanjunga Apartments



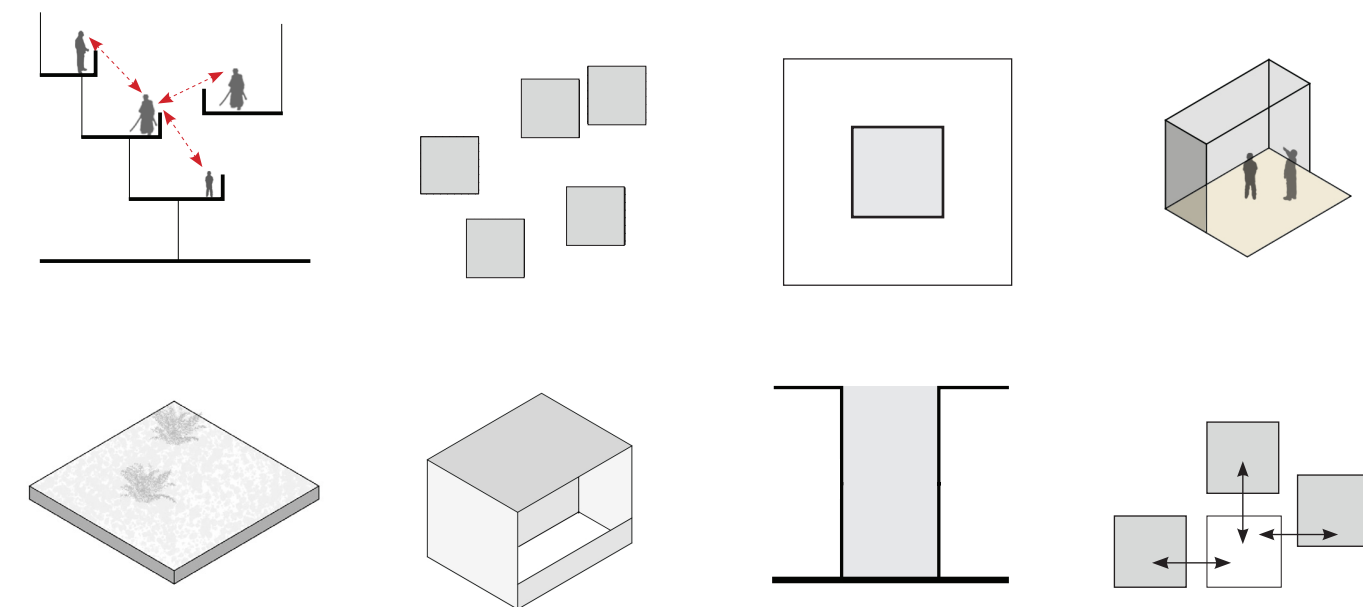
# Skydeck Select



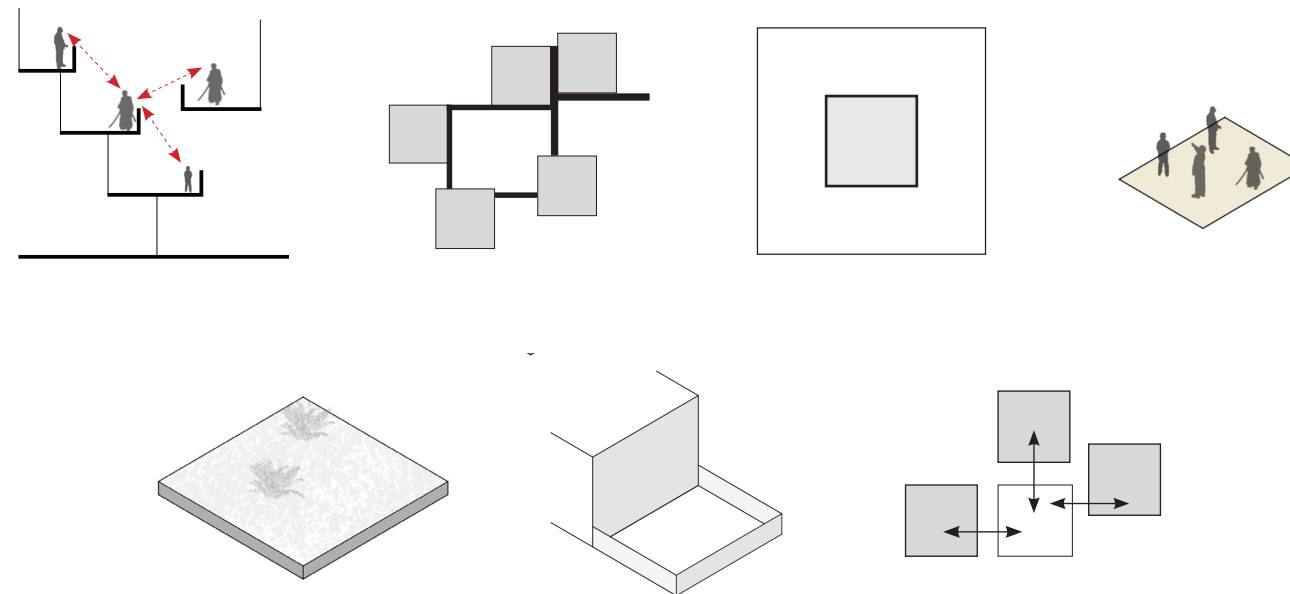
# Kanchanjunga Apartments



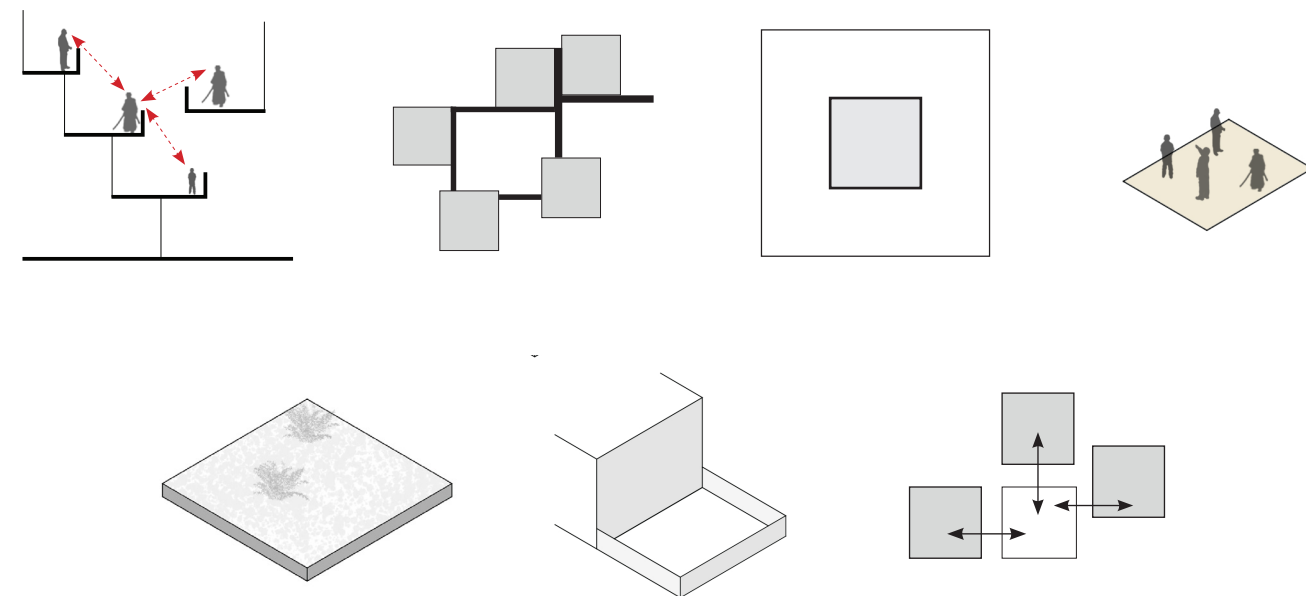
# Walden 7



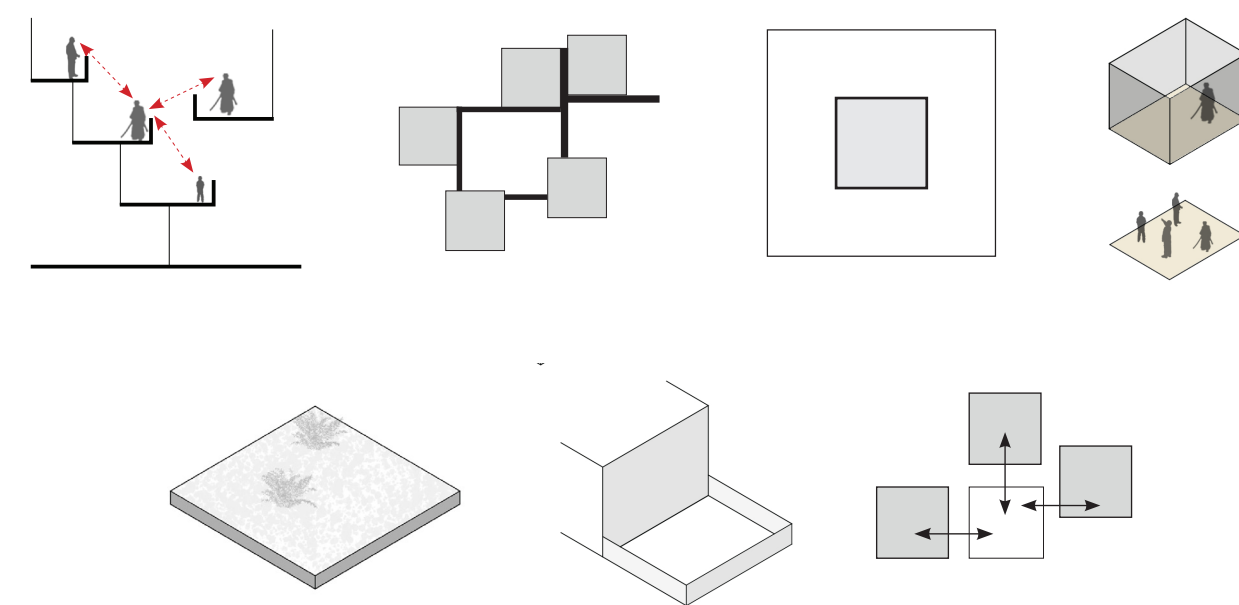
# Aranya Township



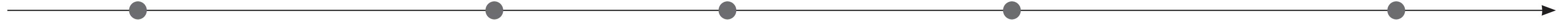
# Aranya Township



# Belapur Housing



Increased Privacy  
Decreased Social Interaction



Aranya Township  
1961

Walden 7  
1975

Belapur Housing  
1983

Kanjanjunga  
Apartments  
1983

Skydeck Select  
2019



## What should we do now?

Should we still design the mass first?

What is the real significance and role of these open spaces in the future of urban Indian households?

**Social Interaction or Privacy:** What do you think is more critical for an Indian Housing Society?

*let's debate*