

# CALCULATIONS

Site	Satellite, Ahmedabad
Classification of Plot	R1
F. S. I.	2.7
Total Plot Area	7600
Permissible F. S. I. Area	20520
Utilized F. S. I. Area	19850

Permissible Height	30	10 floors
Total Bulidable Area/No. of Floors	2052	

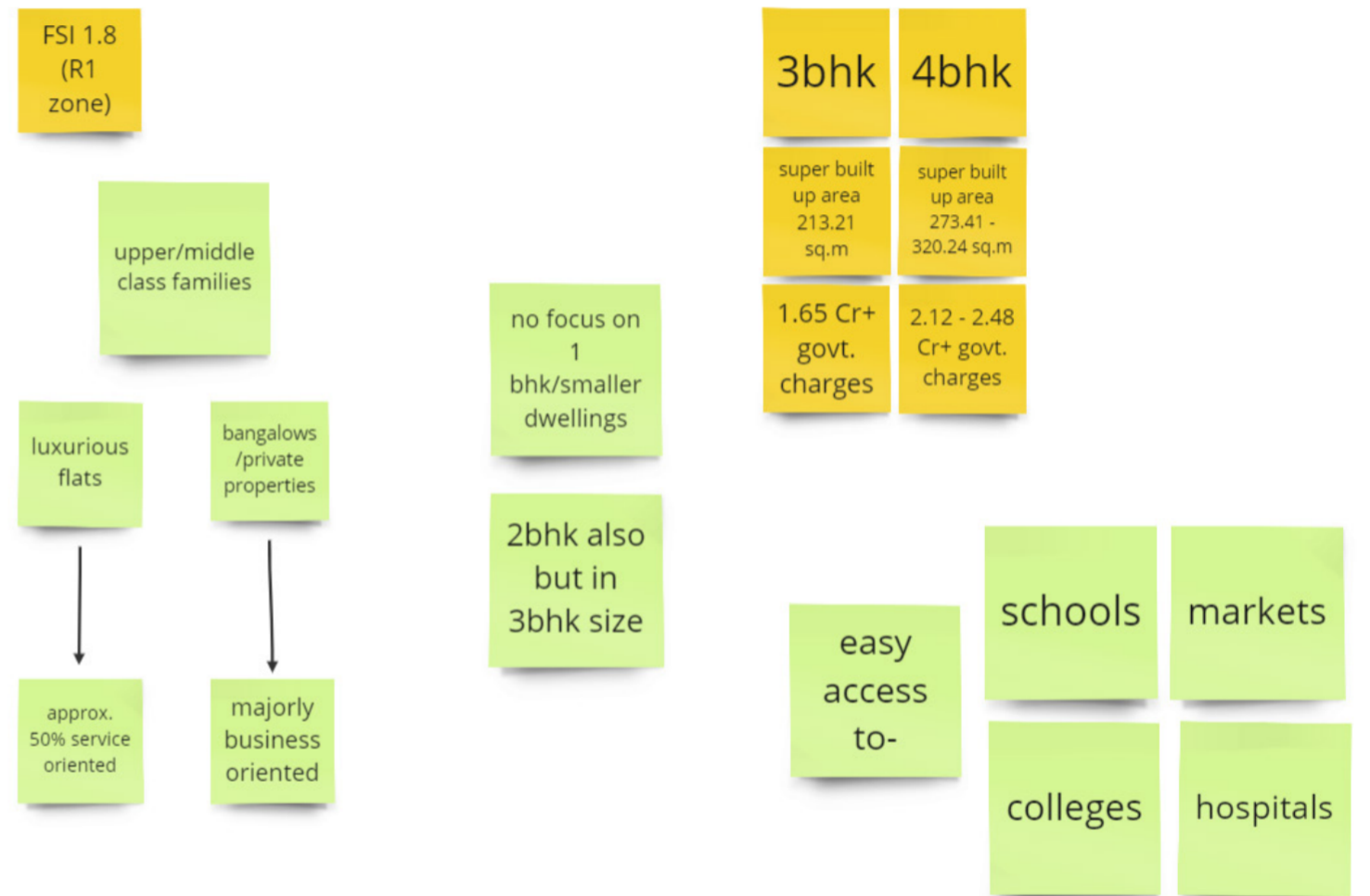
Margins	Road Side	Other Side	Betn Buildings
	3	6	6/9

Common Plot Area	760
Parking	380
Allowable Ground Coverage	3800

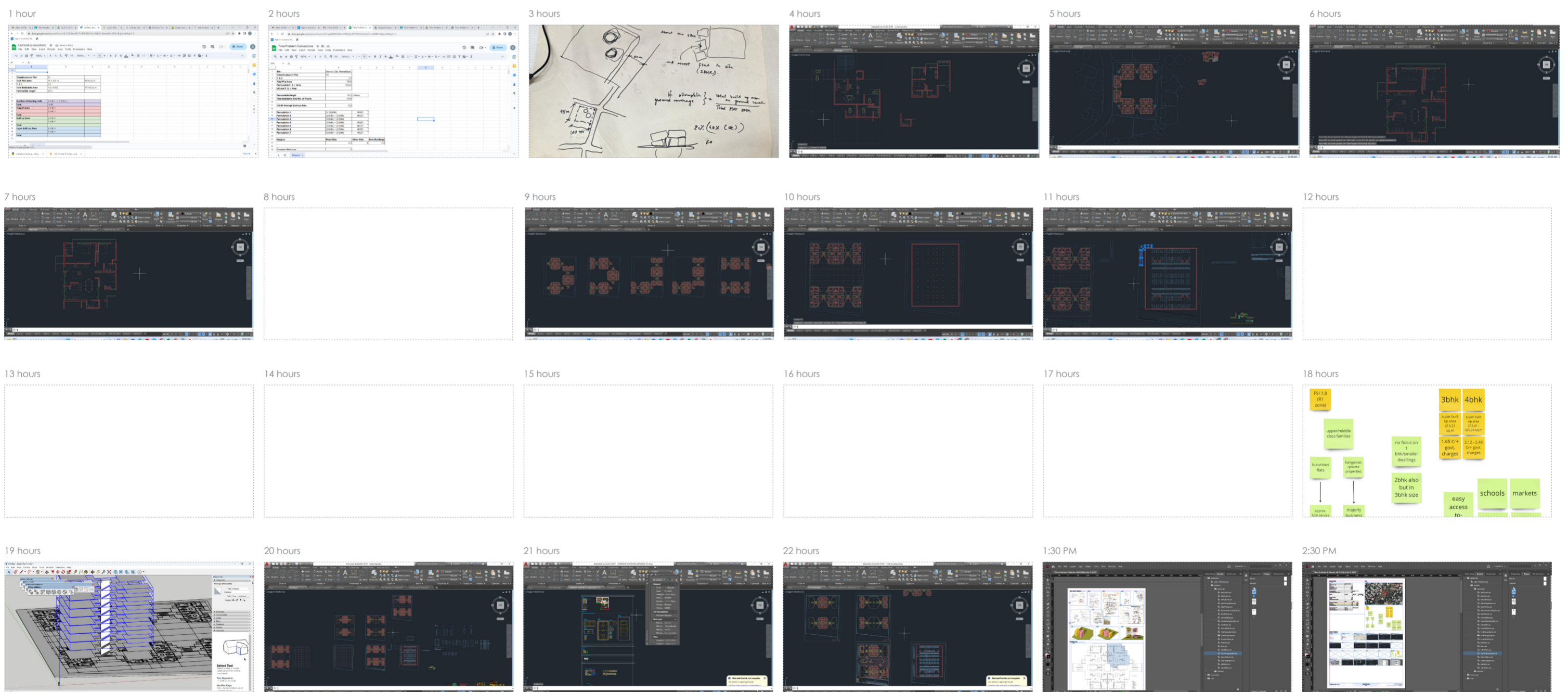
	3BHK	Total
Number of Housing Units	144	144
Carpet Area	120	17280
Built-up Area	142	19850
Super Built-up Area	180	25920

Min. total parking required	4104 sqm	298 cars min.total
Total Visitor parking	410.4 sqm	
Mln. Visitor parking on GF	205.2 sqm	

# SITE



# HOURLY PROGRESS



# IDEA, CONCEPT, PROCESS:

→ how can you make people see each other private life?

→ more importantly, how can you make people comfortable in this in-between space?

→ people can't see me, but I can see them (our visual step away)

I get to do what I want to, without feeling lonely, feeling others' presence, without hindrance

→ what kind of acts happen in this? not too private, but something publicly accepted.

→ then why would people want to be in a space where they can't completely lose themselves?

BUT WHY DO PEOPLE WANT TO SPEND TIME IN AN OTCA WHICH IS MORE A PART OF YOUR HOME?

What is a home? AT HOME, YOU FEEL COMFORT & SECURITY

HEED: HEED: this sense of privacy in the street, but, COMFORT & SECURITY IN THE CIRCULATION SPACE

→ how can it be a public space, and still comfortable & secure?

→ KNOWING THE PEOPLE WHO WILL PASS BY, AND ALSO HAVING A STRONG SENSE OF COMMUNITY.

→ BUT HOW??

TO ENCOURAGE PEOPLE TO OPEN THEIR DOORS?

PROPERTY: 1. PROXIMITY FROM PRIVACY 2. PROXIMITY FROM PUBLIC SPACE

→ how can you make people see each other private life?

→ more importantly, how can you make people comfortable in this in-between space?

→ people can't see me, but I can see them (our visual step away)

I get to do what I want to, without feeling lonely, feeling others' presence, without hindrance

→ what kind of acts happen in this? not too private, but something publicly accepted.

→ then why would people want to be in a space where they can't completely lose themselves?

⑤ HOW TO MAKE PEOPLE USE THAT SPACE??

→ how can you make people see each other private life?

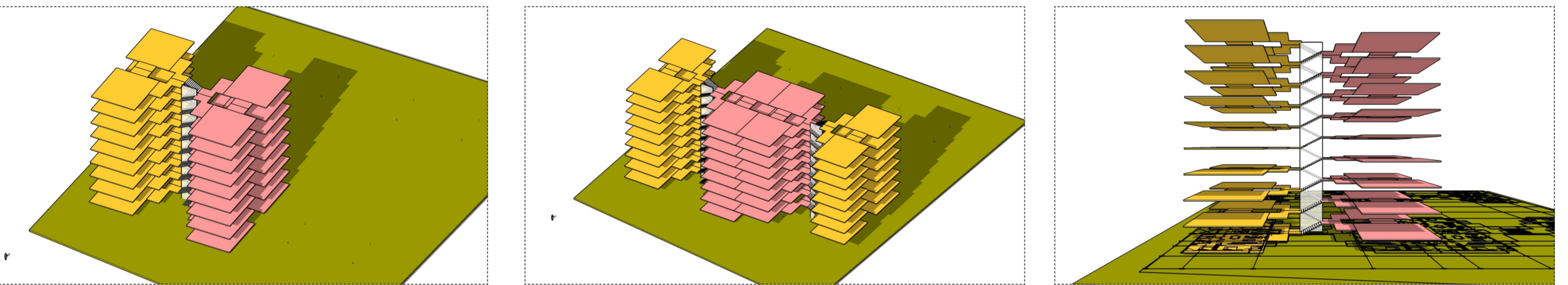
→ more importantly, how can you make people comfortable in this in-between space?

→ people can't see me, but I can see them (our visual step away)

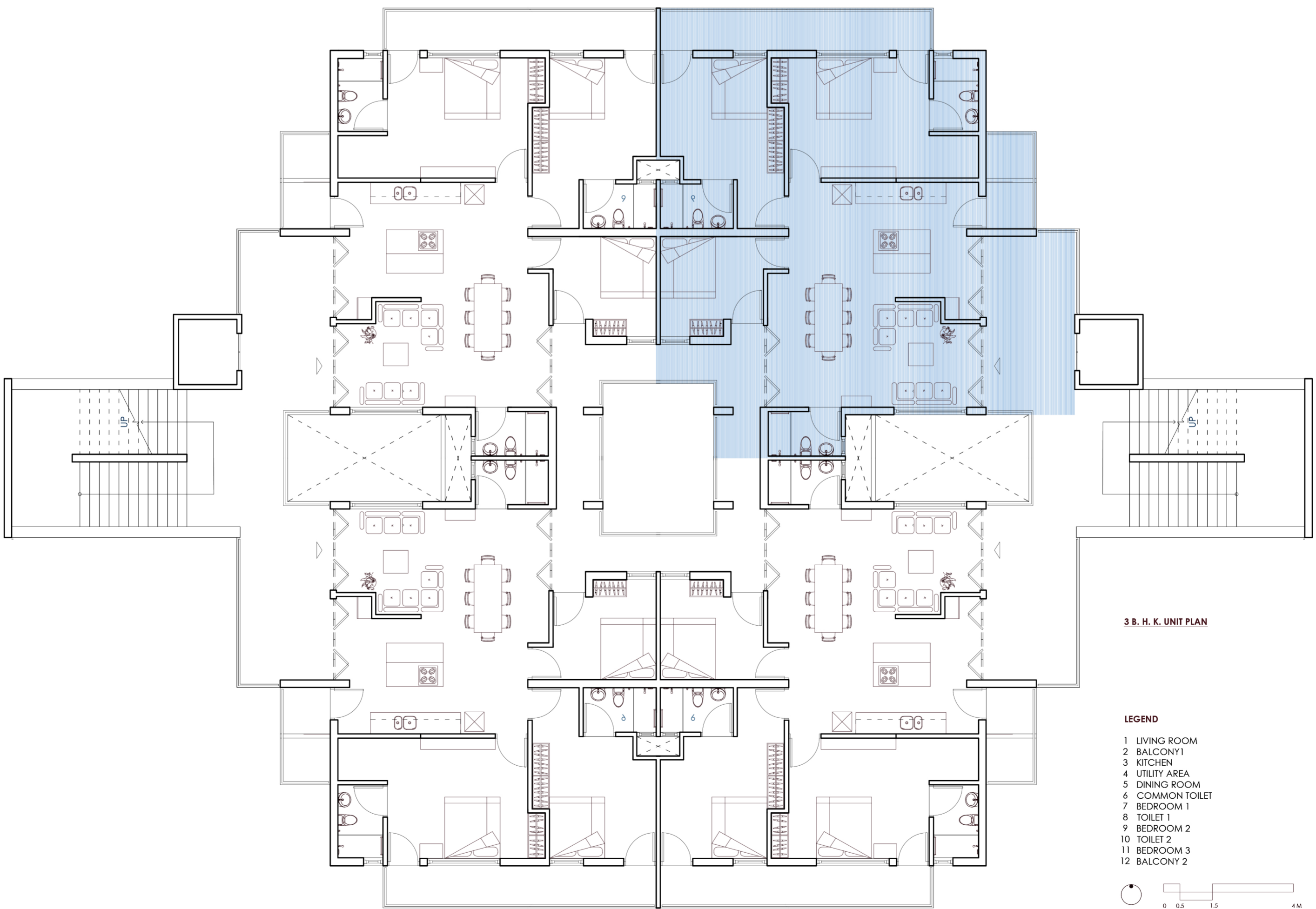
I get to do what I want to, without feeling lonely, feeling others' presence, without hindrance

→ what kind of acts happen in this? not too private, but something publicly accepted.

→ then why would people want to be in a space where they can't completely lose themselves?



# CLUSTER PLAN



- 3 B. H. K. UNIT PLAN
- LEGEND
- 1 LIVING ROOM
  - 2 BALCONY 1
  - 3 KITCHEN
  - 4 UTILITY AREA
  - 5 DINING ROOM
  - 6 COMMON TOILET
  - 7 BEDROOM 1
  - 8 TOILET 1
  - 9 BEDROOM 2
  - 10 TOILET 2
  - 11 BEDROOM 3
  - 12 BALCONY 2
- 0 0.5 1.5 4M