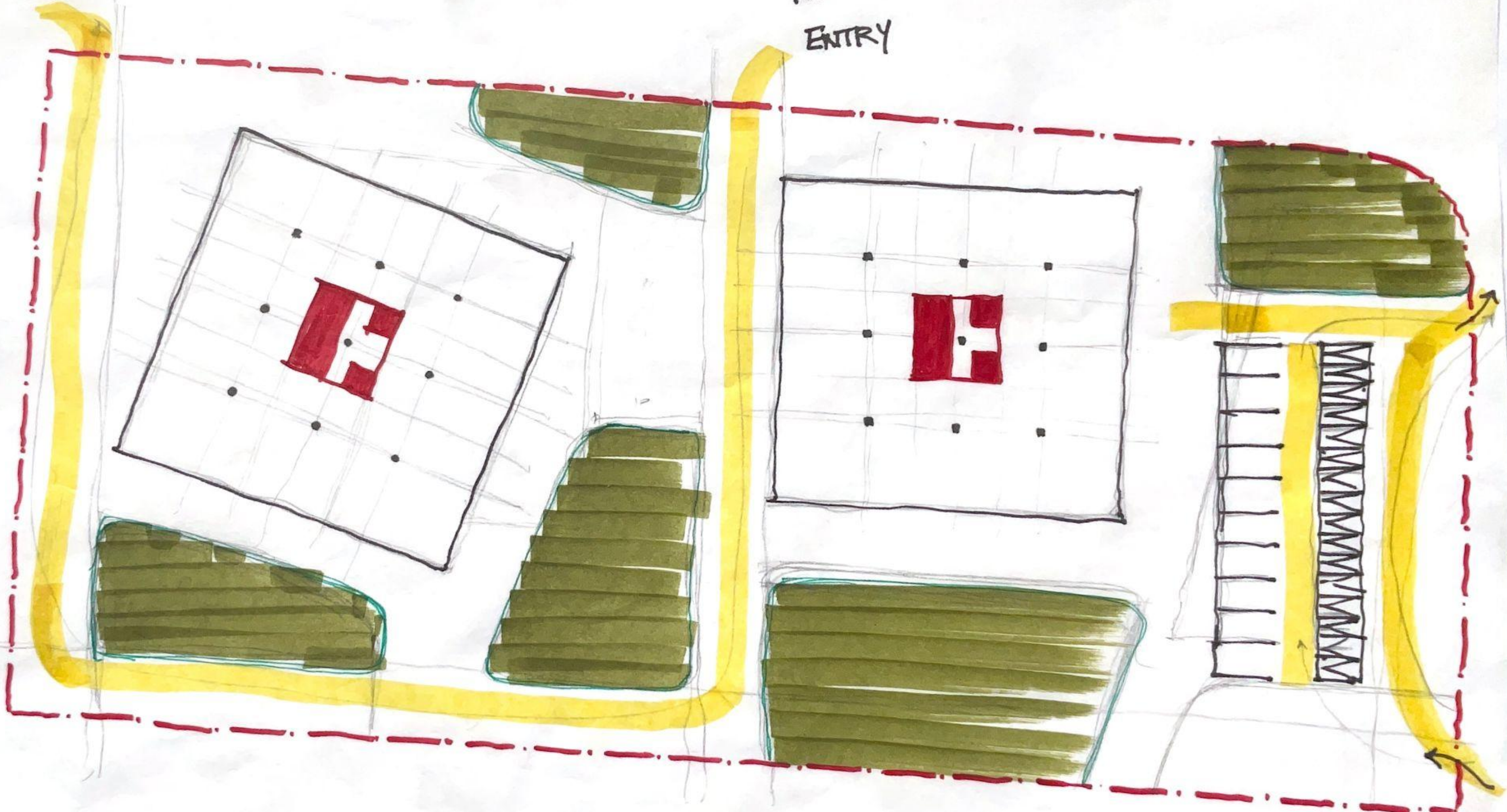
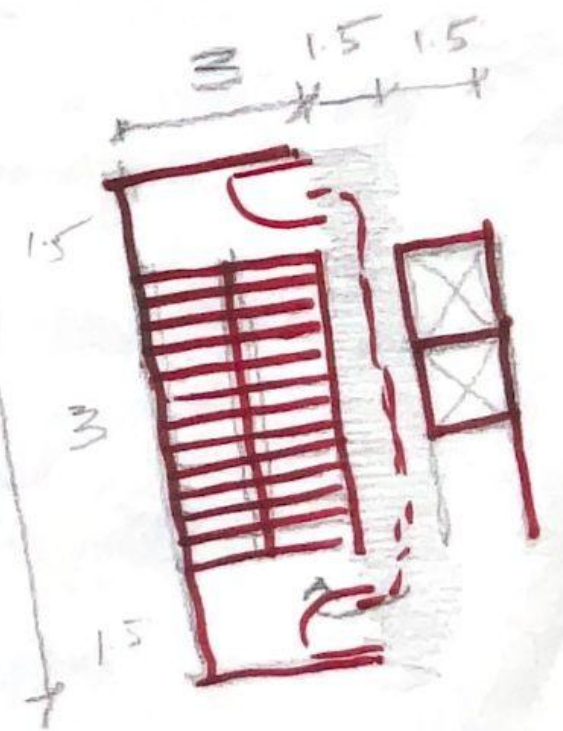
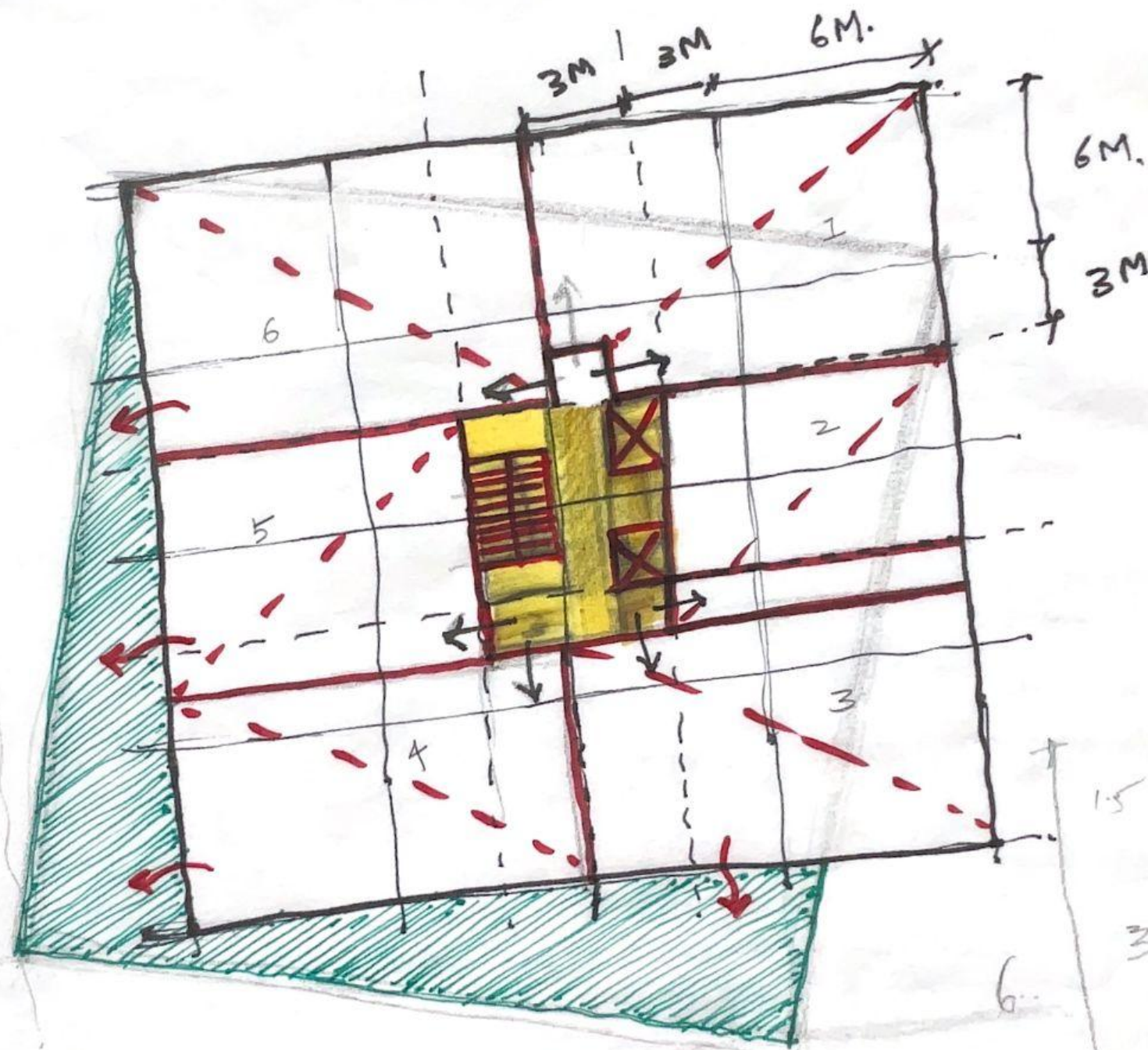
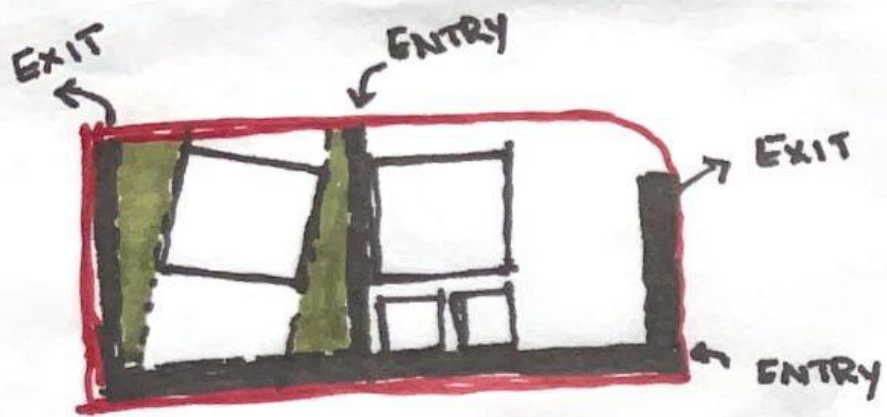


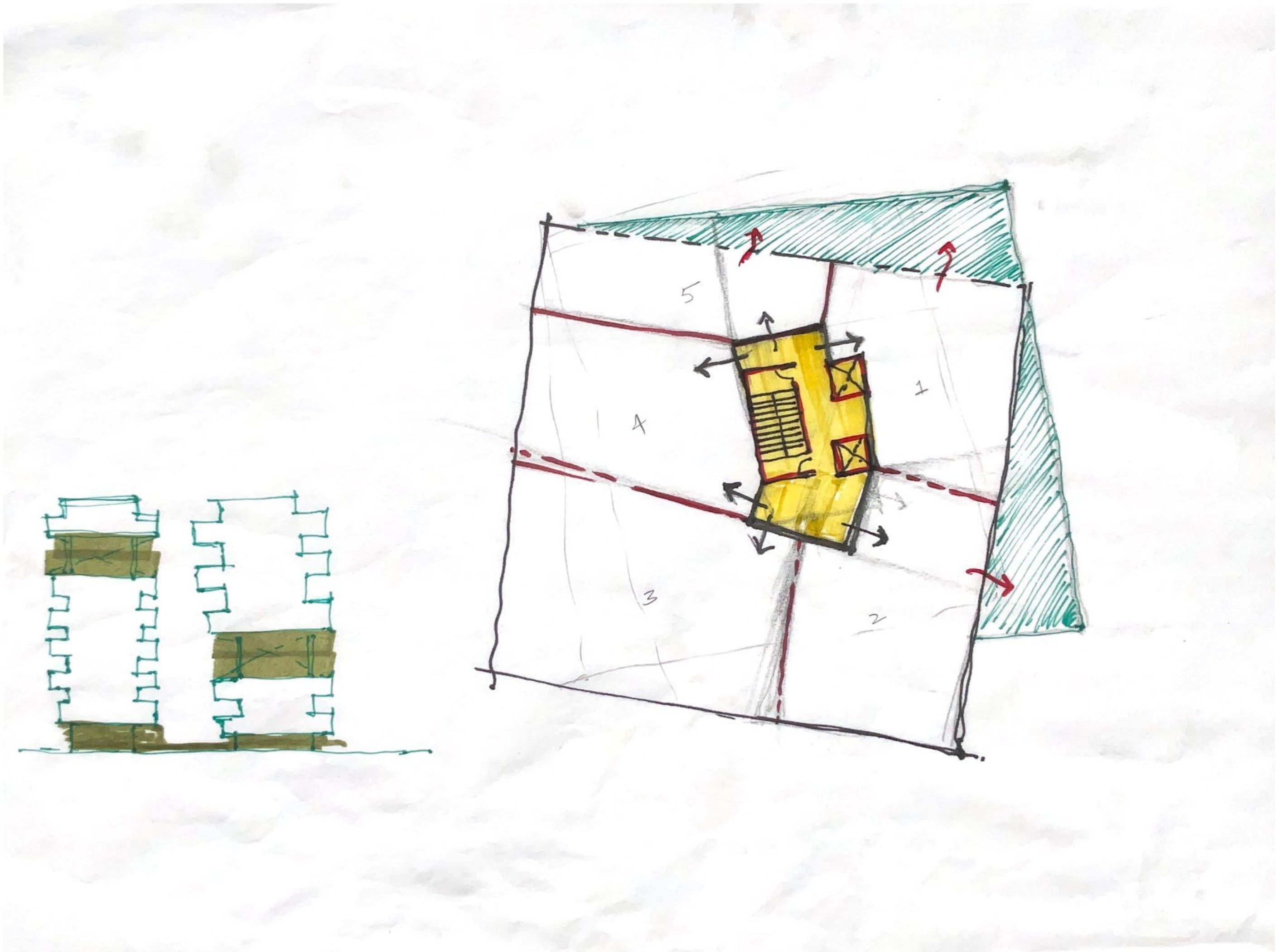
RESIDENCE  
EXIT

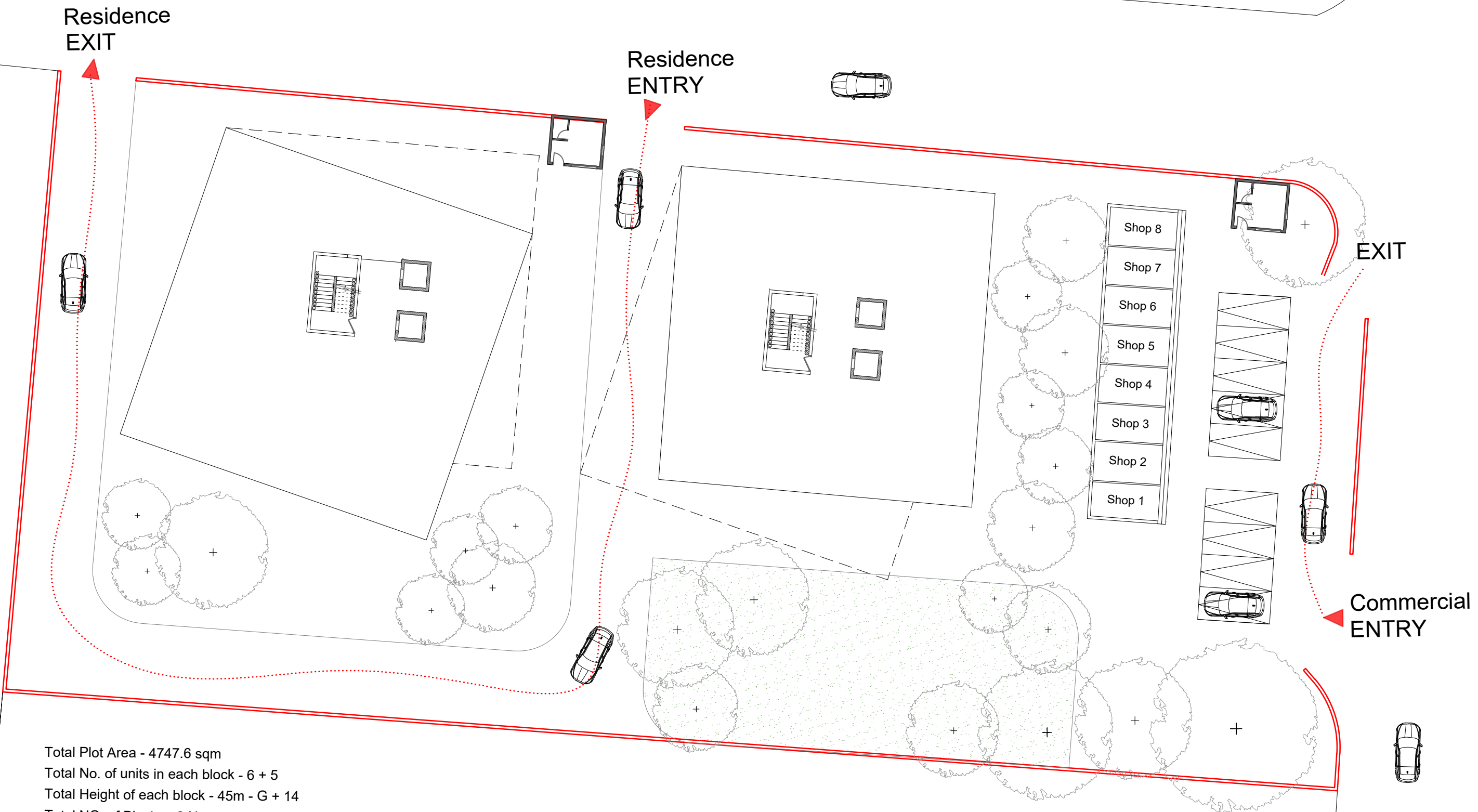
RESIDENCE  
ENTRY



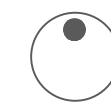
COMMERCIAL  
ENTRY

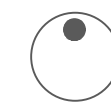


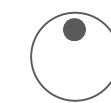
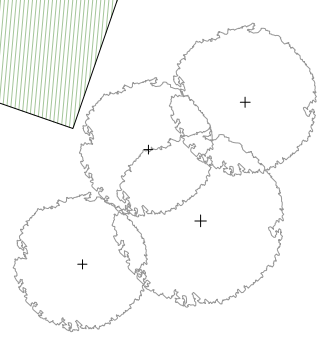
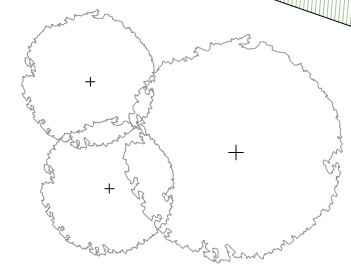
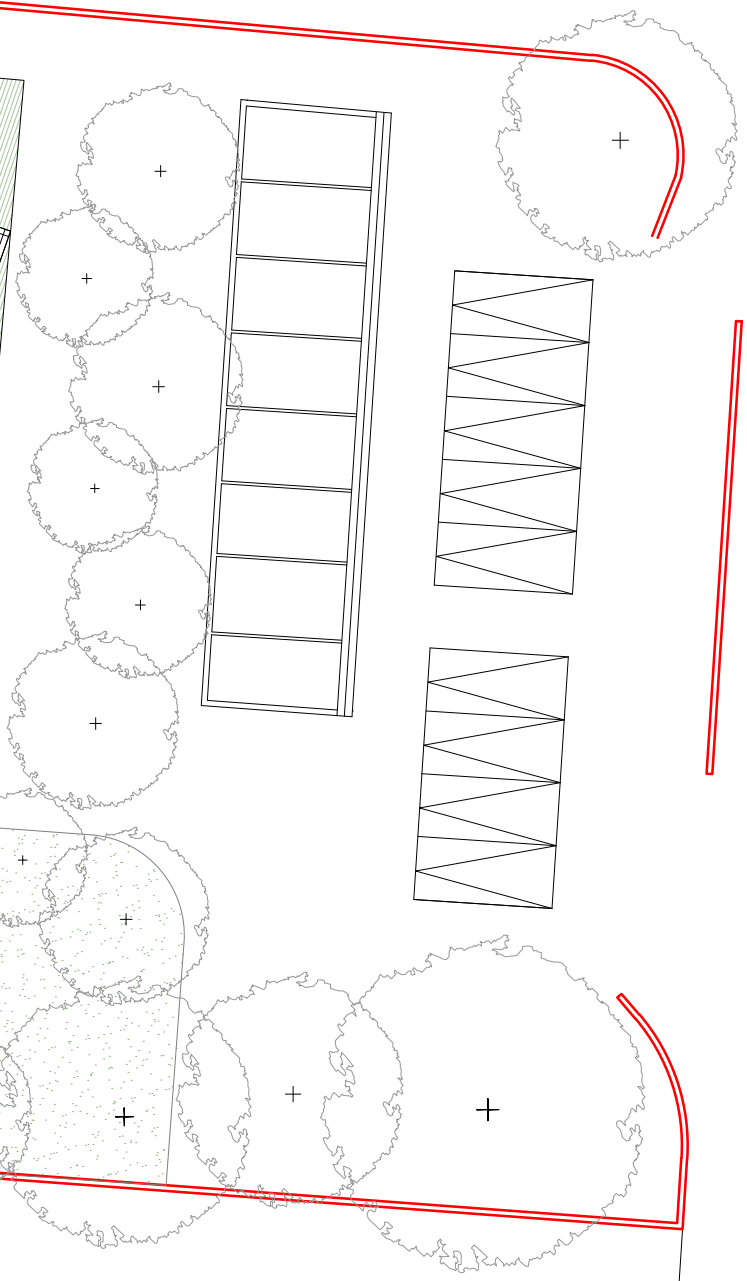




Total Plot Area - 4747.6 sqm  
 Total No. of units in each block - 6 + 5  
 Total Height of each block - 45m - G + 14  
 Total NO. of Blocks - 2 No.s  
 Total NO. of Units in each block - 84 No.s + 70 No.s  
 Total NO. of Units - 154 No.s



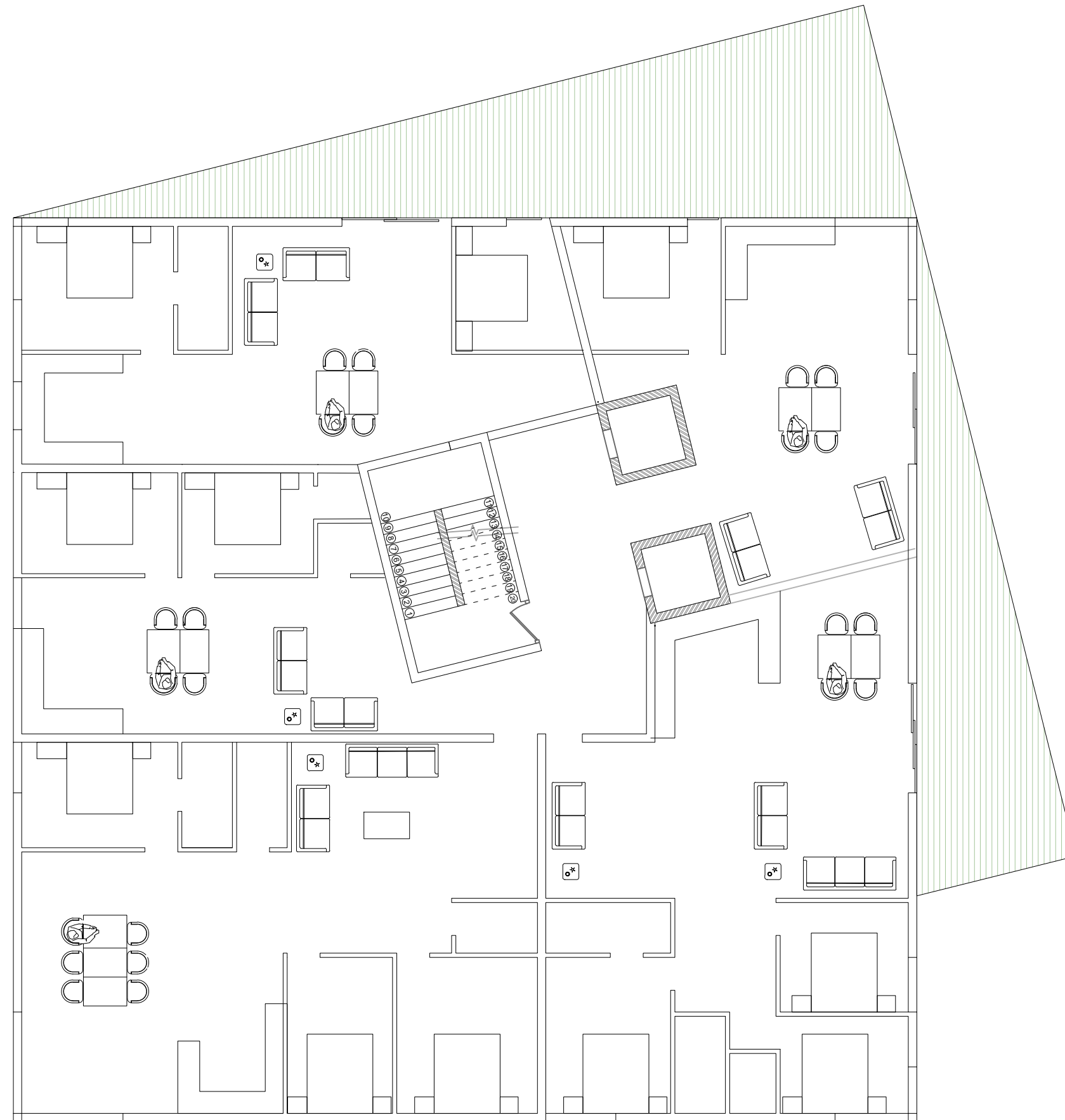




# FLOOR TYPE 1



# FLOOR TYPE 2







MHD 4004 | Oikopolis VI: A New Beginning

Massing Model | Time Problem 5

Saranya Tumuluru |PHD24491

