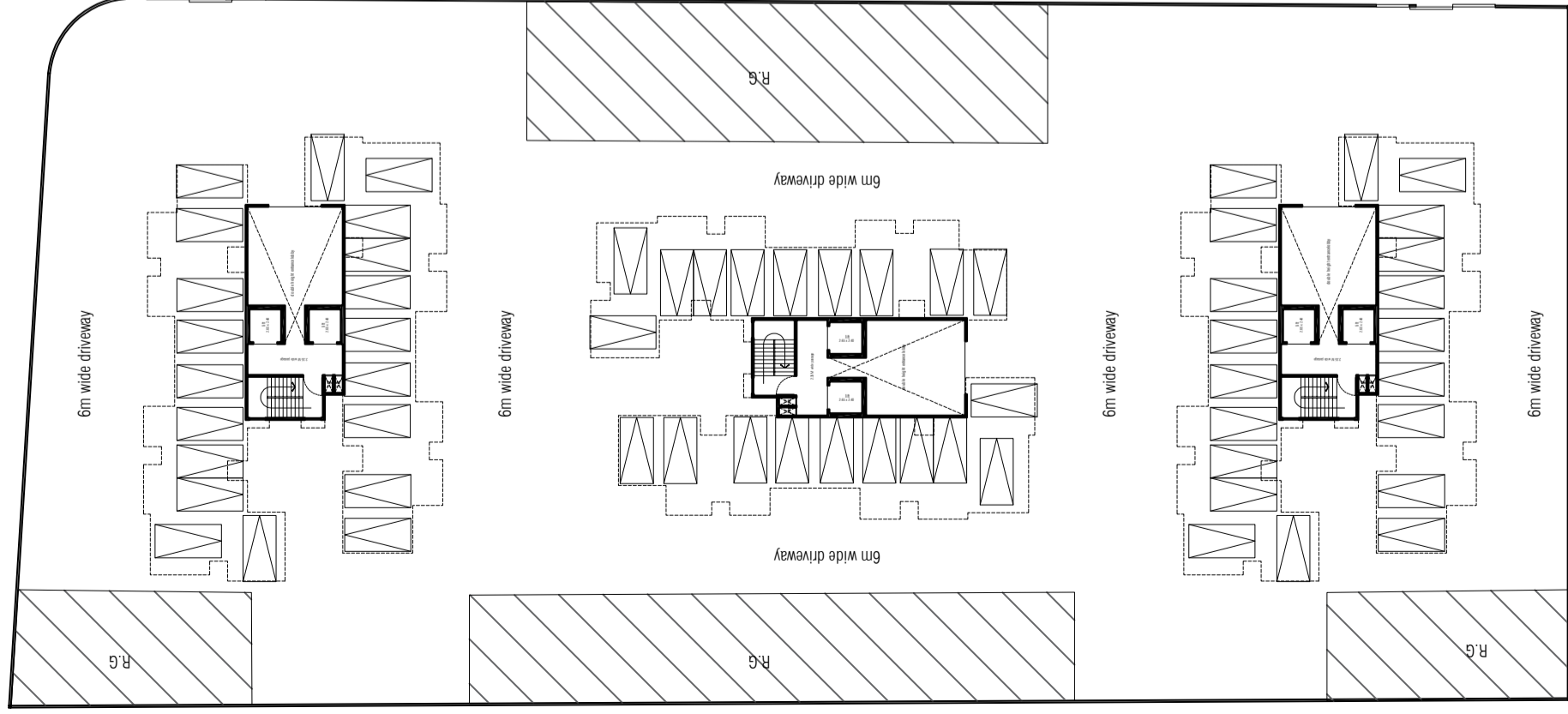
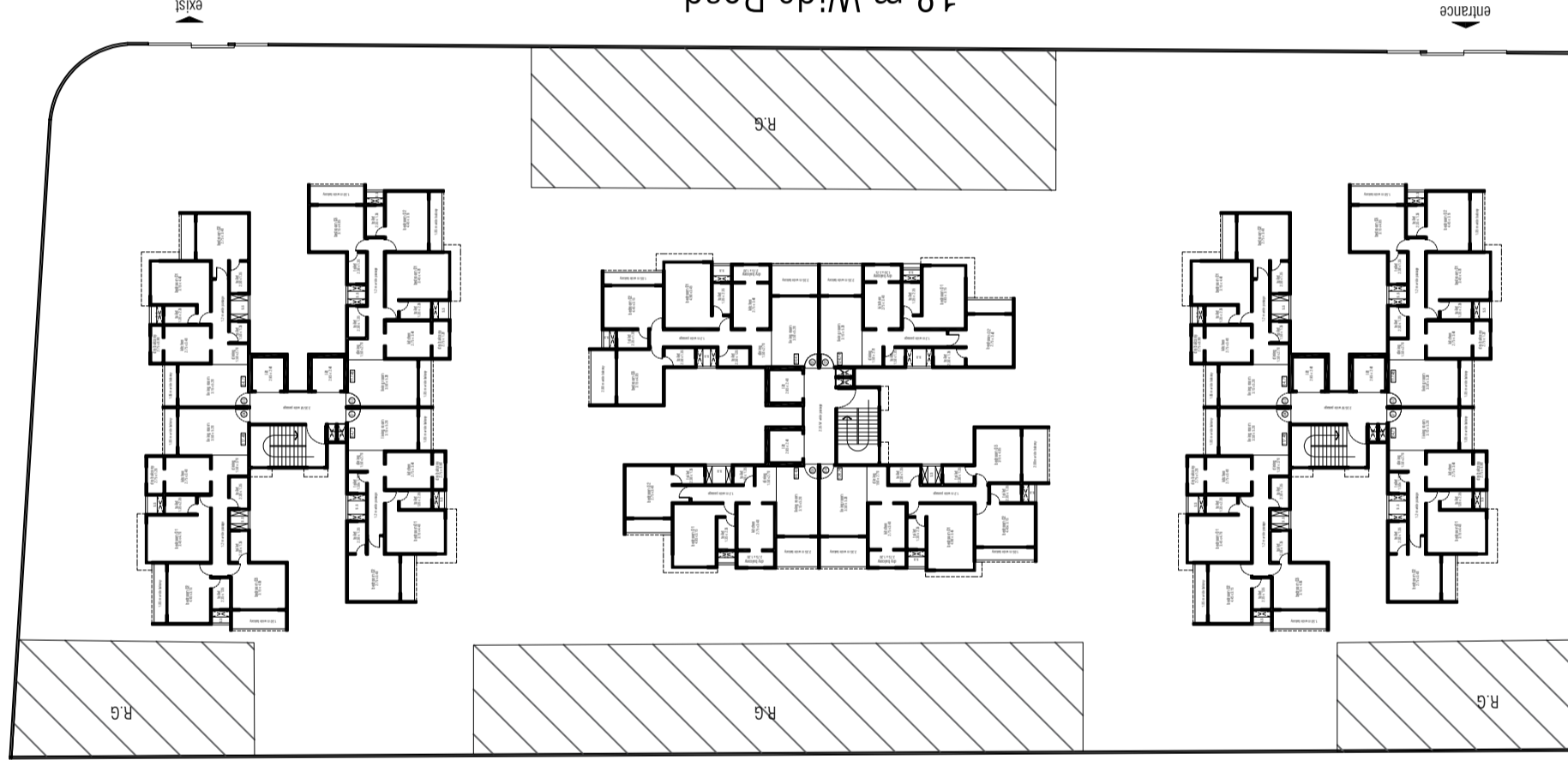


30 m Wide Road



ground floor plan

30 m Wide Road



site plan

SITE AREA = 6168 sq.mt.

ROAD WIDTH- 30 mt. on the North
- 18m on the East

LOCATION- Shashtrinagar, Ahmedabad

RECREATIONAL GROUND (R.G) to be left out = 20% of site area
(15% + 5% thick planting)

F.S.I. = 2.7 (1.8+0.9)

Permissible Built up = 16,653.6 sq.mt

Height Restriction = 45 mt.

Open Spaces (Margin) - 7.5 mt. road side
- 6 mt. rear side

Parking allotment- 1:1 (Each unit 1 parking)

PERMISSIBLE HEIGHT- 45 mt.

Considering that:

Ground Floor- 4.2 mt.

Residential typical floor- 3.6 mt.

Total Floors- G+14

Taking into consideration market requirements the proposal includes 2BHK & 3BHK typologies.

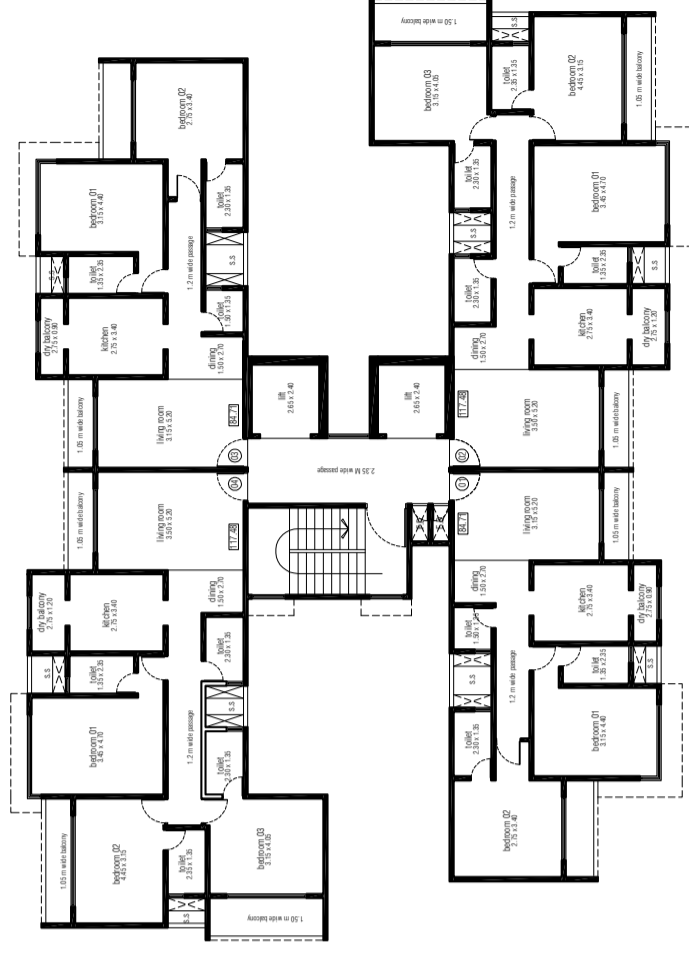
approx, **Built up area per floor**- 1189.54 sq.mt. taking, **12 units per floor**

Size of 1 unit= approx 99.128 sq.mt. = 99.00 sq.mt.

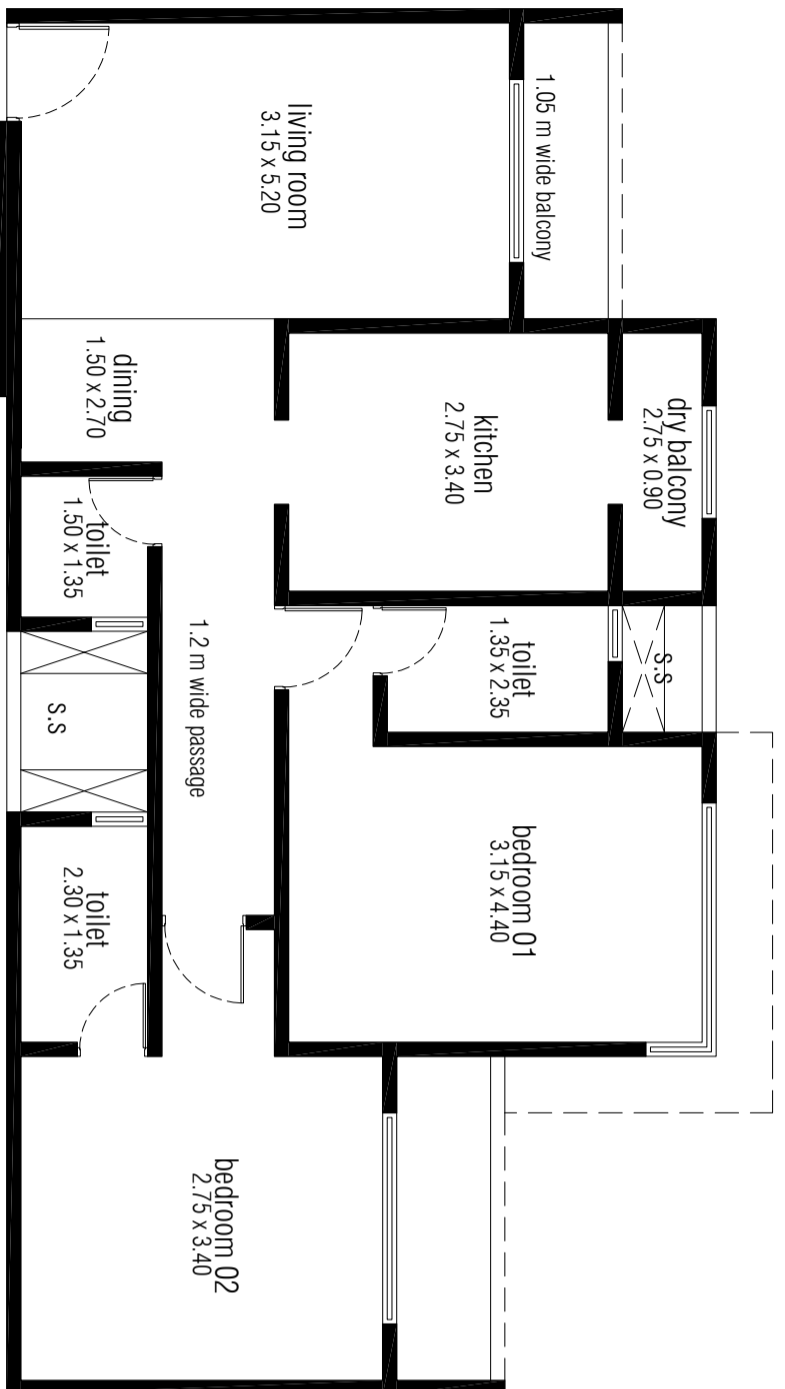
Size: 2 BHK- 90.42 sq.mt.
3 BHK- 124.74 sq.mt.

Time Problem 01

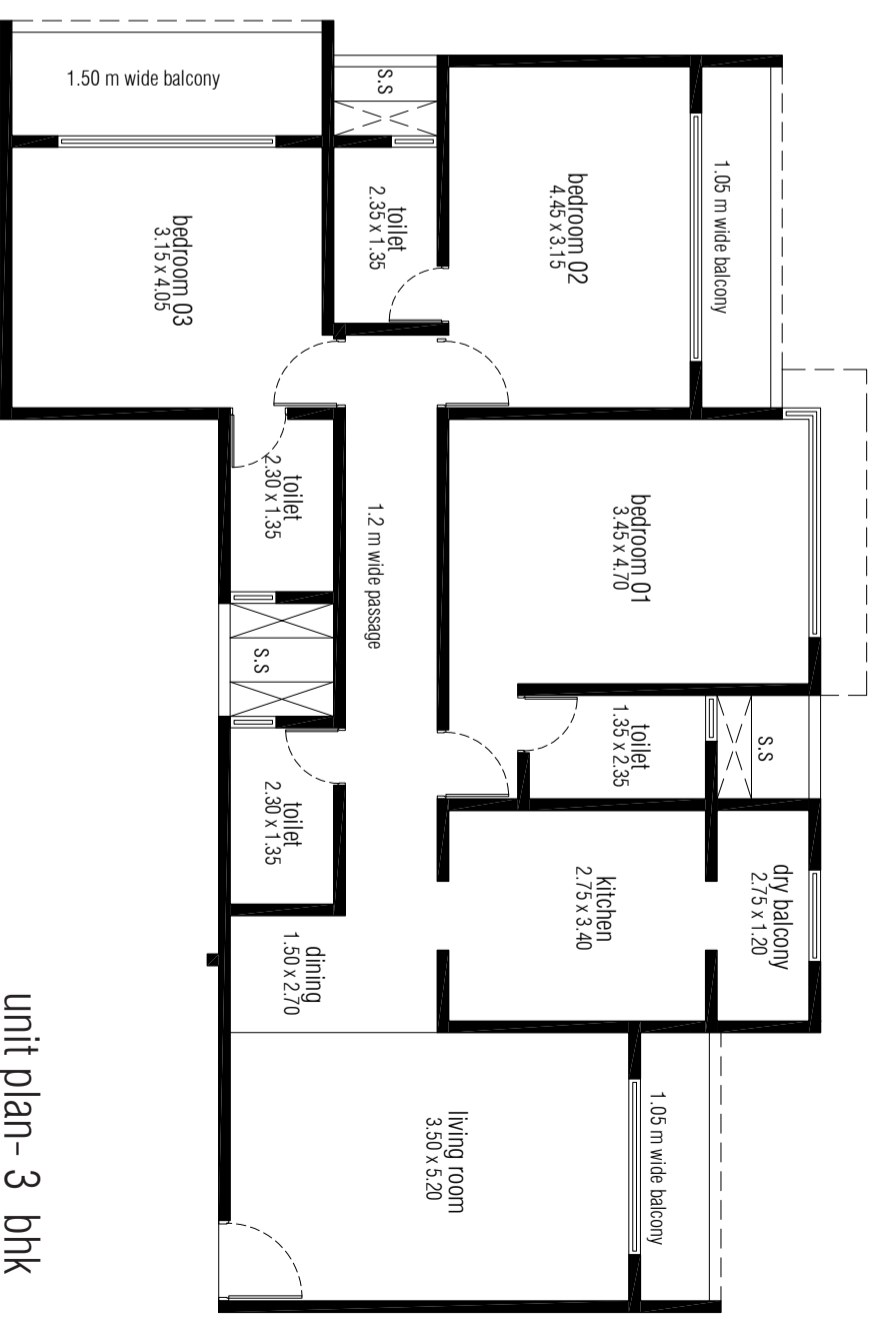
Housing Proposal at Shashtrinagar



typical floor plan



unit plan - 2 bhk



unit plan - 3 bhk

PERMISSIBLE BUILT UP AREA = 16,653.6 sq.mt

FLOOR	AREA (sq.mt.)	HEIGHT	FLOOR	AREA	HEIGHT	FLOOR	AREA	HEIGHT
G.F.	-	4.2 mt.	G.F.	-	4.2 mt.	G.F.	-	4.2 mt.
1 floor	452.96	3.4 mt.	1 floor	452.96 sq.mt.	3.4 mt.	1 floor	481.83 sq.mt.	3.4 mt.
2 floor	452.96	3.4 mt.	2 floor	452.96 sq.mt.	3.4 mt.	2 floor	481.83 sq.mt.	3.4 mt.
3 floor	452.96	3.4 mt.	3 floor	452.96 sq.mt.	3.4 mt.	3 floor	481.83 sq.mt.	3.4 mt.
4 floor	452.96	3.4 mt.	4 floor	452.96 sq.mt.	3.4 mt.	4 floor	481.83 sq.mt.	3.4 mt.
5 floor	452.96	3.4 mt.	5 floor	452.96 sq.mt.	3.4 mt.	5 floor	481.83 sq.mt.	3.4 mt.
6 floor	452.96	3.4 mt.	6 floor	452.96 sq.mt.	3.4 mt.	6 floor	481.83 sq.mt.	3.4 mt.
7 floor	452.96	3.4 mt.	7 floor	452.96 sq.mt.	3.4 mt.	7 floor	481.83 sq.mt.	3.4 mt.
8 floor	452.96	3.4 mt.	8 floor	452.96 sq.mt.	3.4 mt.	8 floor	481.83 sq.mt.	3.4 mt.
9 floor	452.96	3.4 mt.	9 floor	452.96 sq.mt.	3.4 mt.	9 floor	481.83 sq.mt.	3.4 mt.
10 floor	452.96	3.4 mt.	10 floor	452.96 sq.mt.	3.4 mt.	10 floor	481.83 sq.mt.	3.4 mt.
11 floor	452.96	3.4 mt.	11 floor	452.96 sq.mt.	3.4 mt.	11 floor	481.83 sq.mt.	3.4 mt.
12 floor	452.96	3.4 mt.	12 floor	452.96 sq.mt.	3.4 mt.	12 floor	481.83 sq.mt.	3.4 mt.
Total =	5435.52 sq. mt.		Total =	5435.52 sq. mt.		Total =	5760.48 sq. mt.	

CUMMULATIVE TOTAL AREA = 16,625.52 sq.mt. (Balance area = 28.08 sq.mt.)